



September 30, 2015

Mr. Matt Lepore, Director
Colorado Oil and Gas Conservation Commission
1120 Lincoln Street, Suite 801
Denver, Colorado 80203

**RE: COGCC Rule 318A.e.: Proposed Wellbore Spacing Unit & Name Change
Alicia 12-15H-2N to 2C, E/2 of W/2 & W/2 of E/2 Section 12, Township 1 South, Range 68 West,
Weld County, Colorado**

Dear Mr. Lepore:

Mendell Finisterre II, LLC (Mendell) is planning to drill the above referenced well in accordance with the provisions set out in COGCC Rule 318A.e. Mendell's proposed wellbore spacing unit consists of 320 acres more or less.

Mendell is not the only owner within the proposed wellbore spacing unit and on 8/25/15 sent PSU Notifications & Waivers to Synergy Resources Corp. regarding this spacing unit, as required by COGCC Rule 318A.e.(6). As of this date we have not received any objections to this proposed PSU.

Attached is the Proposed Spacing Unit Plat to assist in your review and approval of the Mendell proposed Sundry Form 4 to decrease the HZ wellbore from a 1-1/4 Mile HZ to a 1 Mile HZ and Name Change for the Alicia 12-15H-2N to 2C, API# 05-001-09824. Mendell respectfully requests the COGCC review the enclosed information and approve the proposed PSU and Sundry.

Respectfully,

Paul Gottlob
Regulatory & Engineering Technician
Integrated Petroleum Technologies, Inc
Consultants to Mendell Finisterre II, LLC

Attachment: Proposed Spacing Unit Plat

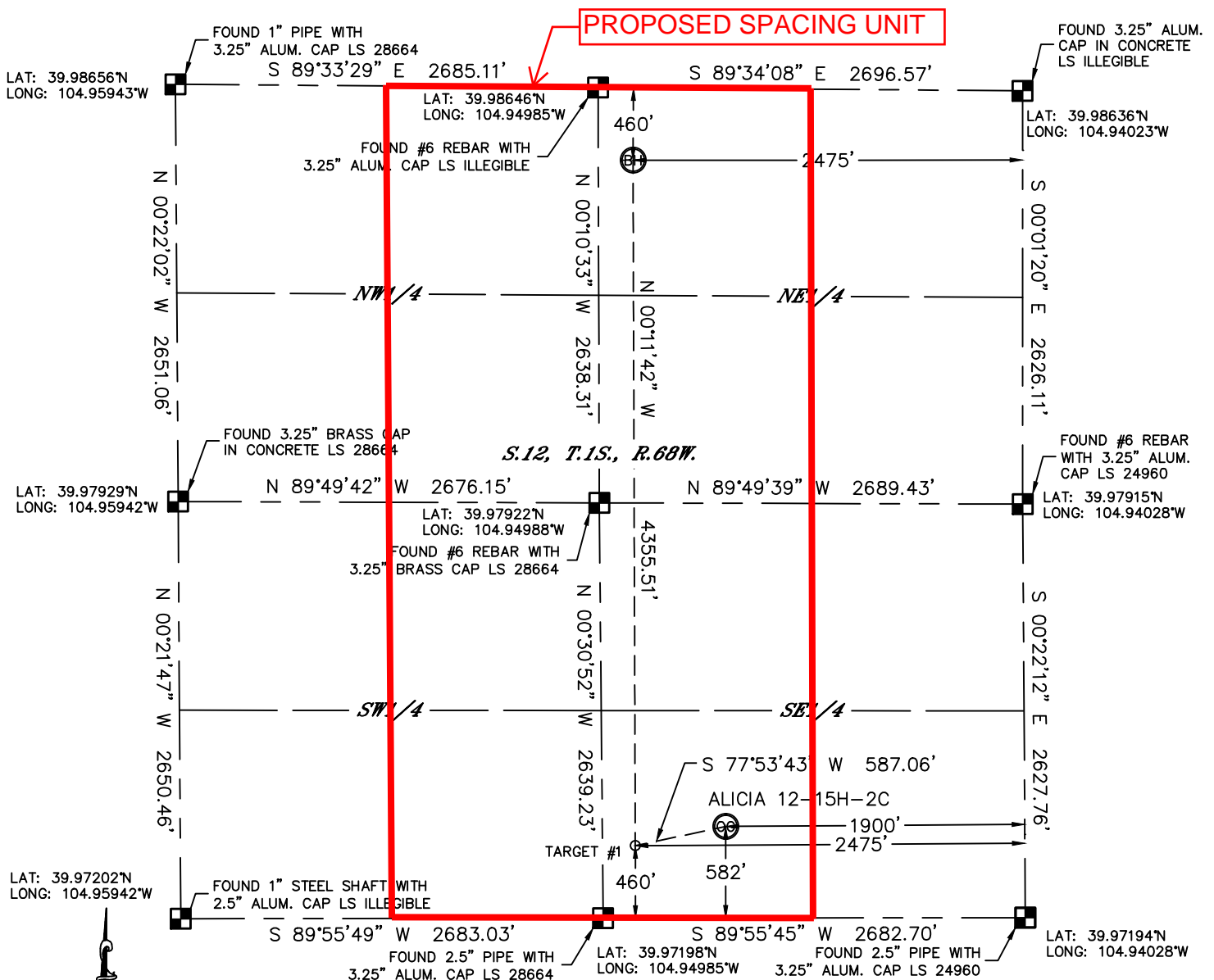


Lat40°, Inc. 6250 W. 10th Street, Unit 2, Greeley, CO 970-515-5294

WELL LOCATION CERTIFICATE

THIS MAP DOES NOT REPRESENT A BOUNDARY SURVEY

SECTION: 12
TOWNSHIP: 1S
RANGE: 68W



In accordance with a request from Clay Duke with MENDELL FINISTERRE II, LLC Lat40°, Inc. has determined the surface location of the ALICIA 12-15H-2C to be 582' from the SOUTH line and 1900' from the EAST line and the bottom hole to be 460' from the NORTH line and 2475' from the EAST line as measured at right angles from the section lines of Section 12, Township 1 South, Range 68 West of the Sixth Principal Meridian, County of Adams, State of Colorado.

I hereby state that this Well Location Certificate was prepared by me, or under my direct supervision, that the fieldwork was completed on 8/7/2014, for and on behalf of MENDELL FINISTERRE II, LLC. That this is not a Land Survey Plat or an Improvement Survey Plat, and that it is not to be relied upon for establishment of fence, building, or other future improvement lines.

NOTE:

- 1) Bearings shown are Grid Bearings of the Colorado State Plane Coordinate System, North Zone, North American Datum 1983/2007. The lineal dimensions as contained herein are based upon the "U.S. Survey Foot."
 - 2) Ground elevations are based on an observed GPS elevation (NAVD 1988 DATUM).
 - 3) IMPROVEMENTS: See LOCATION DRAWING for all visible improvements within 400' of disturbed area.
 - 4) SURFACE USE: EX. WELL LOCATION
 - 5) INSTRUMENT OPERATOR: BRIAN ROTTINGHAUS
- NEAREST CULTURAL ITEMS:
BUILDING: ±657' SW
BUILDING UNIT: ±662' SE
HIGH OCCUPANCY BUILDING UNIT: ±1933' SW
DESIGNATED OUTSIDE ACTIVITY AREA: 5280'+
PUBLIC ROAD: ±600' S (MADISON CT.)
ABOVEGROUND UTILITY: ±1184' SE
RAILROAD: ±257' NW
PROPERTY LINE: ±182' NW

SURFACE LOCATION

LAT: 39.97357°N
LONG: 104.94706°W
PDOP: 1.5
ELEV: 5150'
1/4,1/4: SW1/4SE1/4

BOTTOM HOLE

LAT: 39.98519°N
LONG: 104.94907°W

TARGET #1

LAT: 39.97324°N
LONG: 104.94911°W

LEGEND

- = ALIQUOT MONUMENT AS DESCRIBED
○ = CALCULATED POSITION

Brian T. Brinkman—On behalf of Lat40°, Inc.
Colorado Licensed Professional
Land Surveyor No. 38175
DATE: 7/21/2014
PROJECT#: 2013026

