

# NGL WATER SOLUTIONS DJ

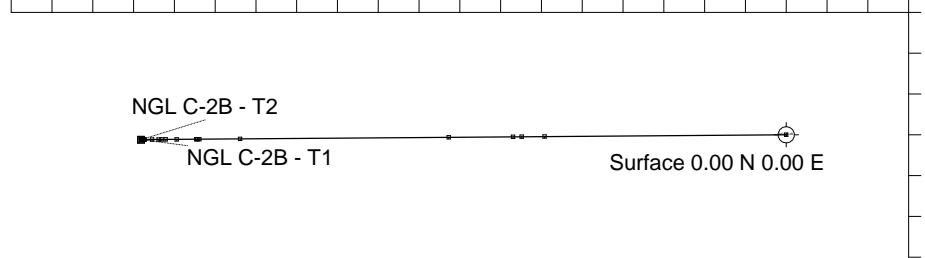
Location DJ Basin  
Field Wattenberg  
Installation NGL C-2B

Slot NGL C-2B  
Well NGL C-2B  
Wellbore NGL C-2B (PWB)

Scale 1 cm = 250 ft

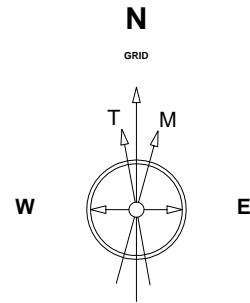
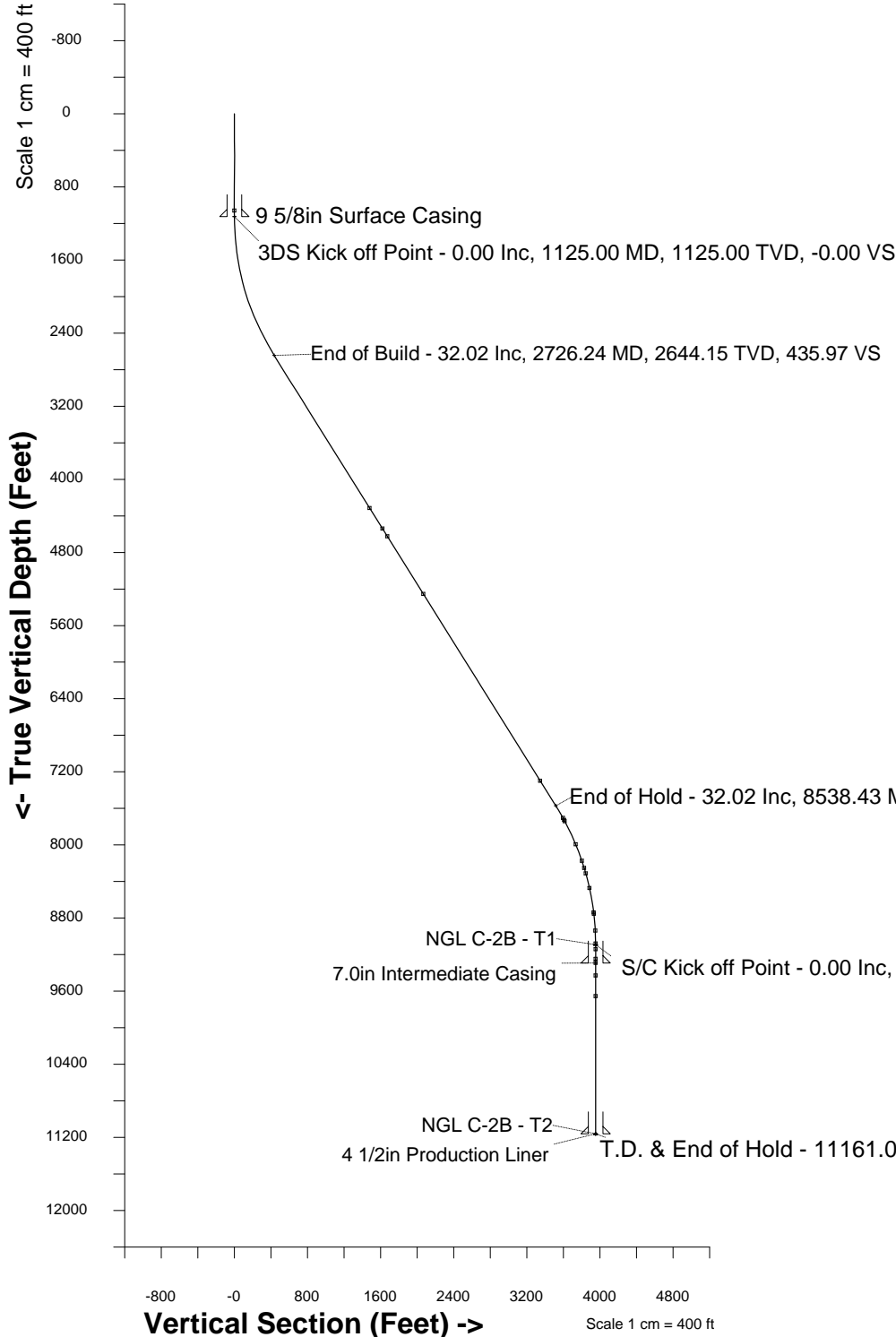
East (Feet) ->

-4500 -4000 -3500 -3000 -2500 -2000 -1500 -1000 -500 0 500



North (Feet) South (Feet) ->

Scale 1 cm = 250 ft



21-Sep-2015  
IGRF Model [1900.0-2020.0] Dip: 66.57 deg Field: 52340.0 nT  
Lat: N40 1 21.1332 Long: W104 53 20.8572 Elev: 9916.01 ft  
Magnetic North is 8.43 deg East of True North  
GRID North is 0.39 deg East of True North  
To correct azimuth from True to GRID subtract 0.39 deg  
To correct azimuth from Magnetic to GRID add 8.03 deg

Created by	admin
Date plotted	24-Sep-2015
Plot reference is NGL C-2B (PWB).	
Ref wellpath is NGL C-2B (PWP#1).	
Coordinates are in Feet reference Installation Centre.	
True Vertical Depths are reference Rig Datum.	
Measured Depths are reference Rig Datum.	
Rig Datum: Planned Datum #1	
Rig Datum to Mean Sea Level: 5028.00 ft.	
Plot North is aligned to GRID North.	

Azimuth 269.57 with reference 0.00 N, 0.00 E from Installation Centre



SYSDRILL  
Well Design Combined Report  
Wellbore: NGL C-2B (PWB)



### Wellhead Details

Name	Latitude	Longitude	Northing	Easting	North	East	Slot Elevation Above Ground
NGL C-2B	40.02253700	-104.88912700	1251645.7600	3171080.3559	0.00N	0.00E	0.00

### Declination

Date	Source	Time
21-Sep-2015	IGRF Model [1900.0-2020.0]	10:12

### Installation Details

Name	Installation Position (Latitude)	Installation Position (Longitude)	Northing	Easting	Coord System Name	North Alignment
NGL C-2B	40.02253700	-104.88912700	1251645.7600	3171080.3559	CO83-NF on NORTH AMERICAN DATUM 1983 datum	Grid

### Summary Wellpath

MD[ft]	Inc[deg]	Azi[deg]	TVD[ft]	North[ft]	East[ft]	Dogleg [deg/100ft]	Vertical Section[ft]	Northing	Easting
13.00	0.00	0.000	13.00	0.00N	0.00E		0.00	1251645.76	3171080.36
1125.00	0.00	269.570	1125.00	0.00N	0.00E	==>	0.00	1251645.76	3171080.36
12209.67	0.00	270.130	11161.00	29.84S	3953.94W	==>	3954.05	1251615.92	3167126.57

### Interpolated Wellpath

MD[ft]	Inc[deg]	Azi[deg]	TVD[ft]	North[ft]	East[ft]	Dogleg [deg/100ft]	Vertical Section[ft]	All Station Comments
0.00	0.00	0.000	0.00	0.00N	0.00E		0.00	Rig Datum Slot Datum
13.00	0.00	0.000	13.00	0.00N	0.00E	==>	0.00	
100.00	0.00	0.000	100.00	0.00N	0.00E	==>	0.00	
200.00	0.00	0.000	200.00	0.00N	0.00E	==>	0.00	
300.00	0.00	0.000	300.00	0.00N	0.00E	==>	0.00	
400.00	0.00	0.000	400.00	0.00N	0.00E	==>	0.00	
500.00	0.00	0.000	500.00	0.00N	0.00E	==>	0.00	
600.00	0.00	0.000	600.00	0.00N	0.00E	==>	0.00	
700.00	0.00	0.000	700.00	0.00N	0.00E	==>	0.00	
800.00	0.00	0.000	800.00	0.00N	0.00E	==>	0.00	
900.00	0.00	0.000	900.00	0.00N	0.00E	==>	0.00	Fox Hills base  9 5/8in Surface Casing
1000.00	0.00	0.000	1000.00	0.00N	0.00E	==>	0.00	
1059.00	0.00	0.000	1059.00	0.00N	0.00E	==>	0.00	
1100.00	0.00	0.000	1100.00	0.00N	0.00E	==>	0.00	
1125.00	0.00	269.570	1125.00	0.00N	0.00E	==>	0.00	
1200.00	1.50	269.570	1199.99	0.01S	0.98W	2.00	0.98	
1300.00	3.50	269.570	1299.89	0.04S	5.34W	2.00	5.34	
1400.00	5.50	269.570	1399.58	0.10S	13.19W	2.00	13.19	
1500.00	7.50	269.570	1498.93	0.18S	24.51W	2.00	24.51	
1600.00	9.50	269.570	1597.83	0.30S	39.29W	2.00	39.29	
1700.00	11.50	269.570	1696.15	0.43S	57.51W	2.00	57.51	
1800.00	13.50	269.570	1793.77	0.60S	79.15W	2.00	79.15	
1900.00	15.50	269.570	1890.58	0.79S	104.19W	2.00	104.19	
2000.00	17.50	269.570	1986.46	1.00S	132.59W	2.00	132.59	
2100.00	19.50	269.570	2081.29	1.24S	164.32W	2.00	164.32	
2200.00	21.50	269.570	2174.95	1.50S	199.33W	2.00	199.34	
2300.00	23.50	269.570	2267.33	1.79S	237.60W	2.00	237.61	
2400.00	25.50	269.570	2358.32	2.11S	279.06W	2.00	279.07	
2500.00	27.50	269.570	2447.81	2.44S	323.68W	2.00	323.69	
2600.00	29.50	269.570	2535.69	2.80S	371.39W	2.00	371.40	
2700.00	31.50	269.570	2621.85	3.19S	422.14W	2.00	422.15	
2800.00	32.02	269.570	2706.69	3.59S	475.07W	==>	475.08	
2900.00	32.02	269.570	2791.48	3.99S	528.09W	==>	528.11	
3000.00	32.02	269.570	2876.26	4.39S	581.12W	==>	581.14	
3100.00	32.02	269.570	2961.04	4.79S	634.15W	==>	634.17	
3200.00	32.02	269.570	3045.82	5.19S	687.18W	==>	687.20	
3300.00	32.02	269.570	3130.60	5.59S	740.20W	==>	740.22	
3400.00	32.02	269.570	3215.39	5.99S	793.23W	==>	793.25	

All data is in Feet unless otherwise stated  
Coordinates are from Slot MD's are from Rig and TVD's are from Rig ( Planned Datum #1 5028.0ft above Mean Sea Level )  
Vertical Section is from 0.00N 0.00E on azimuth 269.570 degrees  
Bottom hole distance is 3954.05 Feet on azimuth 269.57 degrees from Wellhead  
Calculation method uses Minimum Curvature method  
Prepared by Integrated Petroleum Technologies, Inc.  
Date Printed: 24-Sep-2015



SYSDRILL  
Well Design Combined Report  
Wellbore: NGL C-2B (PWB)



Interpolated Wellpath								
MD[ft]	Inc[deg]	Azi[deg]	TVD[ft]	North[ft]	East[ft]	Dogleg [deg/100ft]	Vertical Section[ft]	All Station Comments
3500.00	32.02	269.570	3300.17	6.39S	846.26W	==>	846.28	
3600.00	32.02	269.570	3384.95	6.79S	899.28W	==>	899.31	
3700.00	32.02	269.570	3469.73	7.19S	952.31W	==>	952.34	
3800.00	32.02	269.570	3554.51	7.59S	1005.34W	==>	1005.37	
3900.00	32.02	269.570	3639.29	7.99S	1058.36W	==>	1058.39	
4000.00	32.02	269.570	3724.08	8.39S	1111.39W	==>	1111.42	
4100.00	32.02	269.570	3808.86	8.79S	1164.42W	==>	1164.45	
4200.00	32.02	269.570	3893.64	9.19S	1217.45W	==>	1217.48	
4300.00	32.02	269.570	3978.42	9.59S	1270.47W	==>	1270.51	
4400.00	32.02	269.570	4063.20	9.99S	1323.50W	==>	1323.54	
4500.00	32.02	269.570	4147.99	10.39S	1376.53W	==>	1376.57	
4600.00	32.02	269.570	4232.77	10.79S	1429.55W	==>	1429.59	
4695.81	32.02	269.570	4314.00	11.17S	1480.36W	==>	1480.40	Parkman Ss
4700.00	32.02	269.570	4317.55	11.19S	1482.58W	==>	1482.62	
4800.00	32.02	269.570	4402.33	11.59S	1535.61W	==>	1535.65	
4900.00	32.02	269.570	4487.11	11.99S	1588.63W	==>	1588.68	
4961.20	32.02	269.570	4539.00	12.23S	1621.09W	==>	1621.13	Parkman Ss base
5000.00	32.02	269.570	4571.90	12.39S	1641.66W	==>	1641.71	
5061.46	32.02	269.570	4624.00	12.63S	1674.25W	==>	1674.30	
5100.00	32.02	269.570	4656.68	12.79S	1694.69W	==>	1694.74	
5200.00	32.02	269.570	4741.46	13.19S	1747.72W	==>	1747.77	
5300.00	32.02	269.570	4826.24	13.59S	1800.74W	==>	1800.79	
5400.00	32.02	269.570	4911.02	13.99S	1853.77W	==>	1853.82	
5500.00	32.02	269.570	4995.81	14.39S	1906.80W	==>	1906.85	
5600.00	32.02	269.570	5080.59	14.79S	1959.82W	==>	1959.88	
5700.00	32.02	269.570	5165.37	15.19S	2012.85W	==>	2012.91	
5800.00	32.02	269.570	5250.15	15.59S	2065.88W	==>	2065.94	
5804.54	32.02	269.570	5254.00	15.61S	2068.28W	==>	2068.34	Shannon Ss
5900.00	32.02	269.570	5334.93	15.99S	2118.90W	==>	2118.97	
6000.00	32.02	269.570	5419.72	16.39S	2171.93W	==>	2171.99	
6100.00	32.02	269.570	5504.50	16.79S	2224.96W	==>	2225.02	
6200.00	32.02	269.570	5589.28	17.19S	2277.99W	==>	2278.05	
6300.00	32.02	269.570	5674.06	17.59S	2331.01W	==>	2331.08	
6400.00	32.02	269.570	5758.84	17.99S	2384.04W	==>	2384.11	
6500.00	32.02	269.570	5843.63	18.39S	2437.07W	==>	2437.14	
6600.00	32.02	269.570	5928.41	18.79S	2490.09W	==>	2490.16	
6700.00	32.02	269.570	6013.19	19.19S	2543.12W	==>	2543.19	
6800.00	32.02	269.570	6097.97	19.59S	2596.15W	==>	2596.22	
6900.00	32.02	269.570	6182.75	19.99S	2649.17W	==>	2649.25	
7000.00	32.02	269.570	6267.53	20.39S	2702.20W	==>	2702.28	
7100.00	32.02	269.570	6352.32	20.79S	2755.23W	==>	2755.31	
7200.00	32.02	269.570	6437.10	21.19S	2808.26W	==>	2808.34	
7300.00	32.02	269.570	6521.88	21.59S	2861.28W	==>	2861.36	
7400.00	32.02	269.570	6606.66	21.99S	2914.31W	==>	2914.39	
7500.00	32.02	269.570	6691.44	22.39S	2967.34W	==>	2967.42	
7600.00	32.02	269.570	6776.23	22.79S	3020.36W	==>	3020.45	
7700.00	32.02	269.570	6861.01	23.19S	3073.39W	==>	3073.48	
7800.00	32.02	269.570	6945.79	23.59S	3126.42W	==>	3126.51	
7900.00	32.02	269.570	7030.57	23.99S	3179.44W	==>	3179.54	
8000.00	32.02	269.570	7115.35	24.39S	3232.47W	==>	3232.56	
8100.00	32.02	269.570	7200.14	24.79S	3285.50W	==>	3285.59	
8200.00	32.02	269.570	7284.92	25.19S	3338.53W	==>	3338.62	
8215.43	32.02	269.570	7298.00	25.26S	3346.71W	==>	3346.80	Niobrara
8300.00	32.02	269.570	7369.70	25.59S	3391.55W	==>	3391.65	
8400.00	32.02	269.570	7454.48	25.99S	3444.58W	==>	3444.68	
8500.00	32.02	269.570	7539.26	26.39S	3497.61W	==>	3497.71	
8600.00	30.79	269.570	7624.39	26.79S	3550.07W	2.00	3550.17	
8692.95	28.93	269.570	7705.00	27.14S	3596.35W	2.00	3596.45	Ft Hayes
8700.00	28.79	269.570	7711.17	27.17S	3599.75W	2.00	3599.86	
8718.02	28.43	269.570	7726.99	27.23S	3608.38W	2.00	3608.49	Codell Ss
8732.79	28.14	269.570	7740.00	27.28S	3615.38W	2.00	3615.49	Carlisle Sh

All data is in Feet unless otherwise stated  
Coordinates are from Slot MD's are from Rig and TVD's are from Rig ( Planned Datum #1 5028.0ft above Mean Sea Level )  
Vertical Section is from 0.00N 0.00E on azimuth 269.570 degrees  
Bottom hole distance is 3954.05 Feet on azimuth 269.57 degrees from Wellhead  
Calculation method uses Minimum Curvature method  
Prepared by Integrated Petroleum Technologies, Inc.  
Date Printed: 24-Sep-2015



SYSDRILL  
Well Design Combined Report  
Wellbore: NGL C-2B (PWB)



Interpolated Wellpath								
MD[ft]	Inc[deg]	Azi[deg]	TVD[ft]	North[ft]	East[ft]	Dogleg [deg/100ft]	Vertical Section[ft]	All Station Comments
8800.00	26.79	269.570	7799.63	27.52S	3646.38W	2.00	3646.48	
8900.00	24.79	269.570	7889.66	27.85S	3689.89W	2.00	3689.99	X Bentonite
9000.00	22.79	269.570	7981.16	28.15S	3730.23W	2.00	3730.33	
9012.83	22.54	269.570	7992.99	28.19S	3735.17W	2.00	3735.28	
9100.00	20.79	269.570	8074.01	28.43S	3767.35W	2.00	3767.46	
9200.00	18.79	269.570	8168.09	28.69S	3801.21W	2.00	3801.32	
9205.18	18.69	269.570	8172.99	28.70S	3802.87W	2.00	3802.98	J Ss Skull Creek  Dakota Ss
9288.18	17.03	269.570	8252.00	28.89S	3828.33W	2.00	3828.44	
9300.00	16.79	269.570	8263.31	28.92S	3831.77W	2.00	3831.88	
9349.69	15.80	269.570	8311.00	29.02S	3845.71W	2.00	3845.82	
9400.00	14.79	269.570	8359.53	29.12S	3858.98W	2.00	3859.09	
9500.00	12.79	269.570	8456.64	29.30S	3882.82W	2.00	3882.93	Morrison Fm   Entrada Ss
9514.72	12.50	269.570	8471.00	29.33S	3886.04W	2.00	3886.15	
9600.00	10.79	269.570	8554.52	29.46S	3903.26W	2.00	3903.37	
9700.00	8.79	269.570	8653.06	29.58S	3920.27W	2.00	3920.38	
9786.77	7.06	269.570	8739.00	29.67S	3932.23W	2.00	3932.34	
9800.00	6.79	269.570	8752.13	29.69S	3933.83W	2.00	3933.94	Lykins Fm  Permian (shale marker)
9801.88	6.76	269.570	8754.00	29.69S	3934.05W	2.00	3934.16	
9900.00	4.79	269.570	8851.61	29.76S	3943.92W	2.00	3944.03	
9985.59	3.08	269.570	8937.00	29.81S	3949.80W	2.00	3949.91	
10000.00	2.79	269.570	8951.39	29.81S	3950.53W	2.00	3950.65	
10100.00	0.79	269.570	9051.34	29.84S	3953.66W	2.00	3953.78	Forelle Anh Minnekahta Anh  Blaine Anh
10127.67	0.24	269.570	9079.00	29.84S	3953.91W	2.00	3954.02	
10189.67	0.00	269.570	9141.00	29.84S	3953.94W	==>	3954.05	
10200.00	0.00	269.570	9151.33	29.84S	3953.94W	==>	3954.05	
10295.67	0.00	269.570	9247.00	29.84S	3953.94W	==>	3954.05	
10300.00	0.00	269.570	9251.33	29.84S	3953.94W	==>	3954.05	Lyons 7.0in Intermediate Casing  Ingleside
10339.67	0.00	269.570	9291.00	29.84S	3953.94W	==>	3954.05	
10340.67	0.00	269.570	9292.00	29.84S	3953.94W	==>	3954.05	
10400.00	0.00	269.570	9351.33	29.84S	3953.94W	==>	3954.05	
10477.67	0.00	269.570	9429.00	29.84S	3953.94W	==>	3954.05	
10500.00	0.00	269.570	9451.33	29.84S	3953.94W	==>	3954.05	Fountain
10600.00	0.00	269.570	9551.33	29.84S	3953.94W	==>	3954.05	
10700.00	0.00	269.570	9651.33	29.84S	3953.94W	==>	3954.05	
10703.67	0.00	269.570	9655.00	29.84S	3953.94W	==>	3954.05	
10800.00	0.00	269.570	9751.33	29.84S	3953.94W	==>	3954.05	
10900.00	0.00	269.570	9851.33	29.84S	3953.94W	==>	3954.05	
11000.00	0.00	269.570	9951.33	29.84S	3953.94W	==>	3954.05	
11100.00	0.00	269.570	10051.33	29.84S	3953.94W	==>	3954.05	
11200.00	0.00	269.570	10151.33	29.84S	3953.94W	==>	3954.05	
11300.00	0.00	269.570	10251.33	29.84S	3953.94W	==>	3954.05	
11400.00	0.00	269.570	10351.33	29.84S	3953.94W	==>	3954.05	
11500.00	0.00	269.570	10451.33	29.84S	3953.94W	==>	3954.05	
11600.00	0.00	269.570	10551.33	29.84S	3953.94W	==>	3954.05	
11700.00	0.00	269.570	10651.33	29.84S	3953.94W	==>	3954.05	
11800.00	0.00	269.570	10751.33	29.84S	3953.94W	==>	3954.05	
11900.00	0.00	269.570	10851.33	29.84S	3953.94W	==>	3954.05	4 1/2in Production Liner
12000.00	0.00	269.570	10951.33	29.84S	3953.94W	==>	3954.05	
12100.00	0.00	269.570	11051.33	29.84S	3953.94W	==>	3954.05	
12200.00	0.00	269.570	11151.33	29.84S	3953.94W	==>	3954.05	
12209.67	0.00	270.130	11161.00	29.84S	3953.94W	==>	3954.05	

All data is in Feet unless otherwise stated  
Coordinates are from Slot MD's are from Rig and TVD's are from Rig ( Planned Datum #1 5028.0ft above Mean Sea Level )  
Vertical Section is from 0.00N 0.00E on azimuth 269.570 degrees  
Bottom hole distance is 3954.05 Feet on azimuth 269.57 degrees from Wellhead  
Calculation method uses Minimum Curvature method  
Prepared by Integrated Petroleum Technologies, Inc.  
Date Printed: 24-Sep-2015



All data is in Feet unless otherwise stated  
Coordinates are from Slot MD's are from Rig and TVD's are from Rig ( Planned Datum #1 5028.0ft above Mean Sea Level )  
Vertical Section is from 0.00N 0.00E on azimuth 269.570 degrees  
Bottom hole distance is 3954.05 Feet on azimuth 269.57 degrees from Wellhead  
Calculation method uses Minimum Curvature method  
Prepared by Integrated Petroleum Technologies, Inc.  
Date Printed: 24-Sep-2015



SYSDRILL  
Closest Approach + Clearance Factor Summary Report  
Wellbore: NGL C-2B (PWB)



Ellipse separations are reported ONLY if BOTH wells have uncertainty data
Only Depth and Magnetic Reference Field error terms are correlated across tie points
Proximities beyond 1650.00ft with expansion rate of 0.00ft/1000ft are not reported
Scan limit is calculated on CENTRE to CENTRE distance
Summary data uses Closest Approach clearance calculation for all minima
Hole size/Casings ARE included
Hole size/Casings are NOT subtracted from Centre-Centre distance
Confidence limit of 95.00% / 2.80 SD.

Wellbore		
Name	Created	Last Revised
NGL C-2B (PWB)	21-Sep-2015	24-Sep-2015

Well		
Name	Government ID	Last Revised
NGL C-2B		21-Sep-2015

Slot						
Name	Latitude	Longitude	Grid Northing	Grid Easting	North	East
NGL C-2B	40.02253700	-104.88912700	1251645.7600	3171080.3559	0.00N	0.00E

Installation						
Name	Installation Position (Latitude)	Installation Position (Longitude)	Easting	Northing	Coord System Name	North Alignment
NGL C-2B	40.02253700	-104.88912700	3171080.3559	1251645.7600	CO83-NF on NAD83 datum	Grid

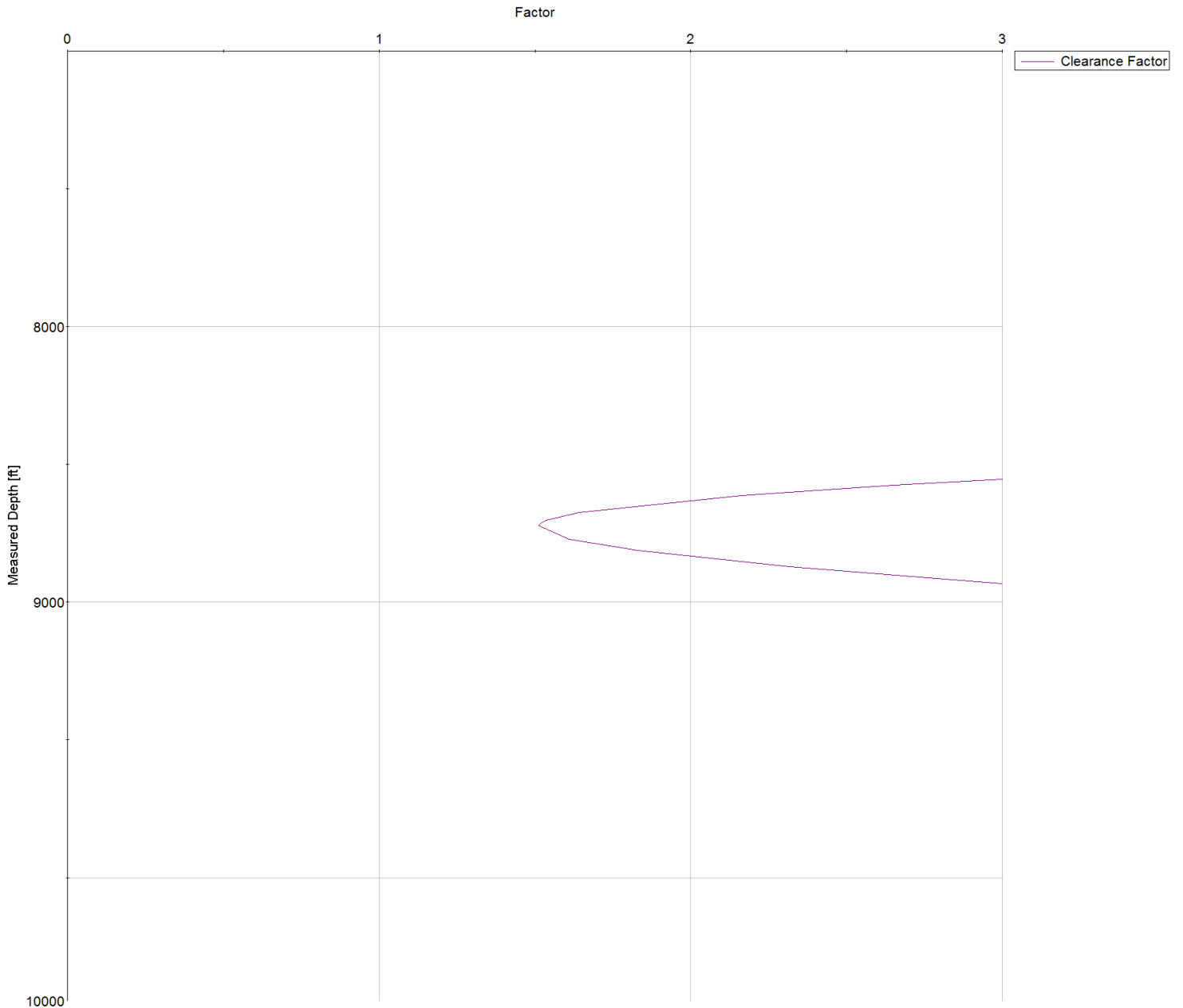
Clearance Summary							
Offset WellName	Separation [ft]	MD[ft]	Diverging From[ft]	Ellipse Separation [ft]	Ellipse MD[ft]	Clearance Factor	Clearance MD[ft]
HOWARD #29C-28HZ	163.37	8704.42	8704.42	55.69	8723.63	1.51	8723.63
HOWARD #4N-28HZ	328.78	8707.23	8707.23	221.91	8690.82	3.06	8674.42
HOWARD #29N-28HZ	430.04	8280.72	8280.72	327.10	8313.00	4.11	8346.33
YOXALL FARMS #7	508.21	4007.06	4007.06	459.80	4032.03	10.19	4212.48
NGL C-2A	616.75	1128.49	1128.49	609.34	1125.00	51.83	3818.77
HOWARD #30C-28HZ	675.46	9058.04	9058.04	563.46	9051.71	6.03	9035.31
YOXALL FARMS #9	687.64	1128.49	1128.49	676.10	1125.00	37.77	2785.31
YOXALL FARMS #2	692.28	5784.32	5784.32	627.63	5787.28	10.67	5836.49
YOXALL FARMS INC #C 1	805.98	3400.37	3400.37	764.25	3457.88	17.33	3982.82
David Howard B #4	836.68	1128.49	1128.49	825.04	1125.00	40.57	3179.01
David Howard #B-2	868.84	3913.00	3913.00	821.93	3966.41	16.88	4474.94
HOWARD #3C-28HZ	964.42	8232.52	8232.52	862.23	8264.31	9.19	8413.00
YOXALL FARMS #4	1107.30	5945.89	5945.89	1037.66	5951.32	15.74	6066.15
HOWARD #16N-33HZ	1229.39	2707.34	2707.34	1206.92	2752.50	38.01	3982.82
HOWARD #28N-28HZ	1229.72	7832.26	7832.26	1130.58	7870.61	11.97	8100.27
HOWARD #36N-33HZ	1284.47	1803.62	1803.62	1273.14	1883.08	22.14	5196.73
HOWARD #15C-33HZ	1297.84	1171.10	1214.74	1290.17	1259.72	36.33	4015.62
HOWARD #37N-33HZ	1304.44	1451.59	1491.66	1295.34	1491.66	40.65	3913.00
HOWARD #37C-33HZ	1312.53	1046.46	1046.46	1305.40	1062.87	45.69	3638.33
HOWARD #38C-33HZ	1318.69	2213.85	2213.85	1302.91	2276.78	43.94	3818.77
W Howard #38C-33HZ	1330.13	1003.00	1003.00	1323.16	1062.87	52.54	3343.05
David Howard #B-5	1459.37	2850.93	2850.93	1430.31	2932.95	32.76	4491.35



SYSDRILL  
Closest Approach + Clearance Factor Summary Report  
Wellbore: NGL C-2B (PWB)

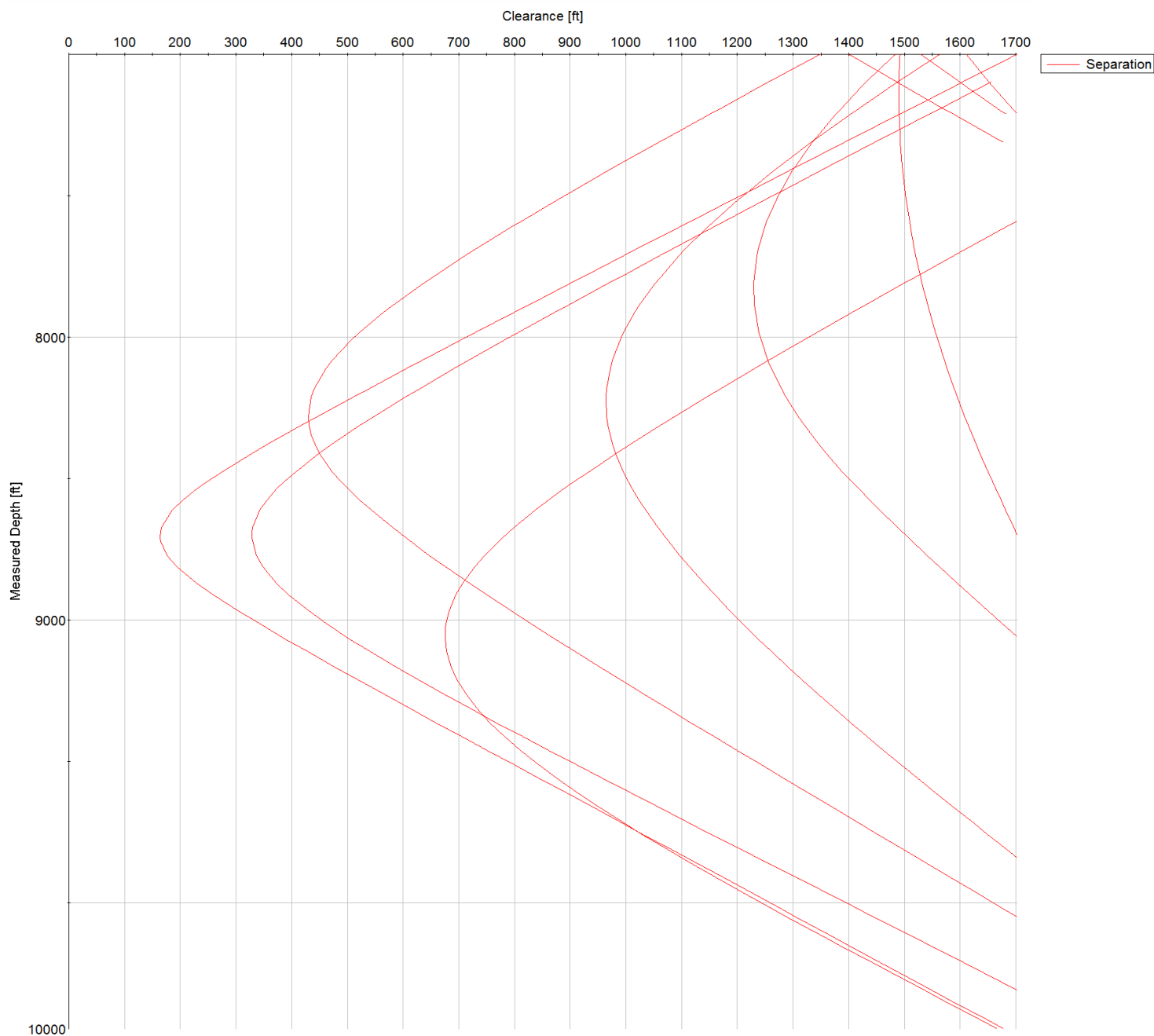


Clearance Summary							
Offset WellName	Separation [ft]	MD[ft]	Diverging From[ft]	Ellipse Separation [ft]	Ellipse MD[ft]	Clearance Factor	Clearance MD[ft]
YOXALL FARMS INC UNIT C #2	1490.10	7141.22	7141.22	1381.75	7230.85	13.09	7854.21
YOXALL FARMS #5	1490.53	6388.12	6388.12	1437.38	6394.23	27.75	6558.28
HOWARD #28C-33HZR	1711.33	7690.17	7690.17	1616.14	7722.97	17.57	7985.44





SYS DRILL  
Closest Approach + Clearance Factor Summary Report  
Wellbore: NGL C-2B (PWB)



All data is in Feet unless otherwise stated  
Coordinates are from Slot MD's are from Rig and TVD's are from Rig ( Planned Datum #1 5028.0ft above Mean Sea Level )  
Vertical Section is from 0.00N 0.00E on azimuth 269.570 degrees  
Prepared by Integrated Petroleum Technologies, Inc.  
Date Printed: 24-Sep-2015



