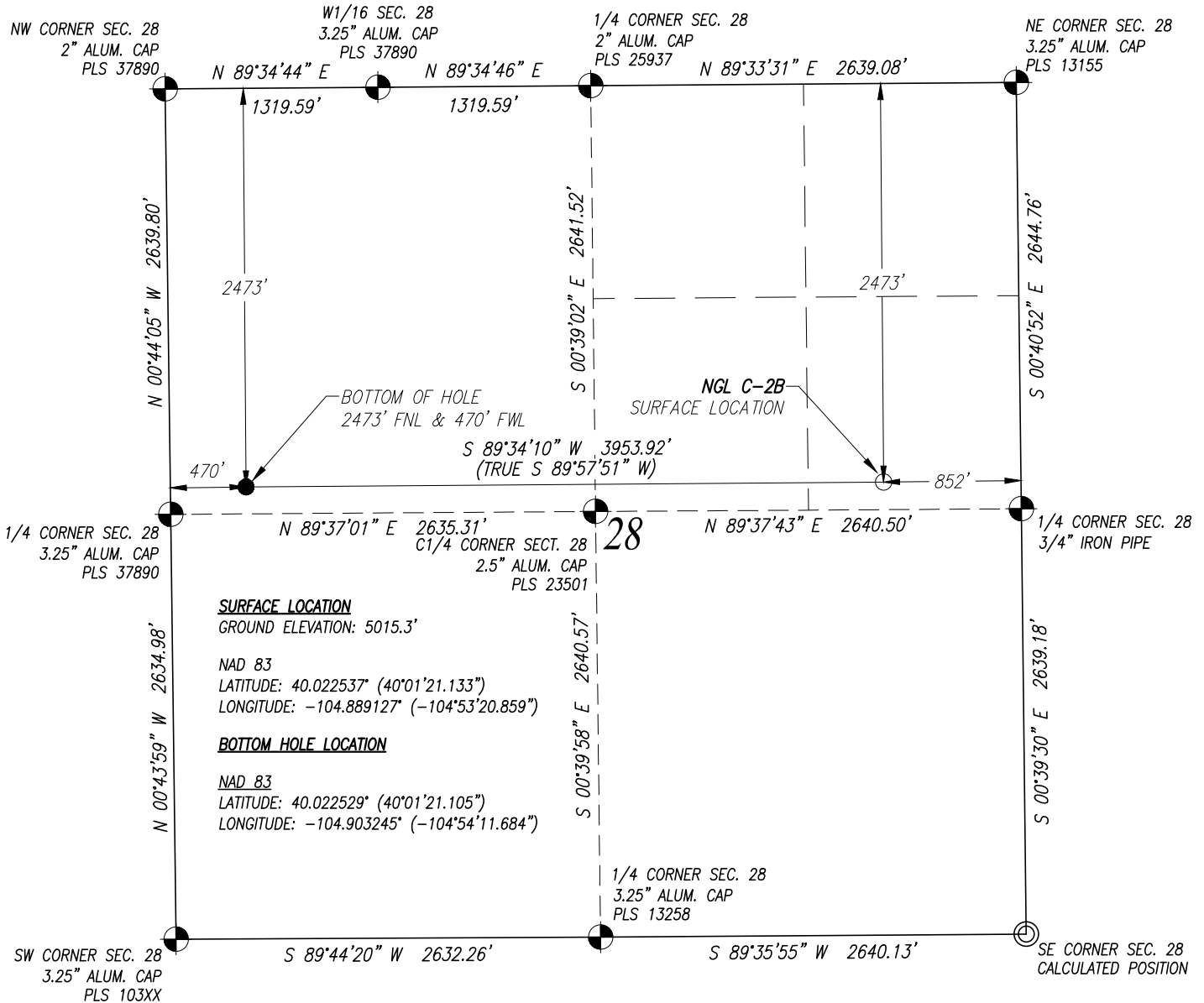


WELL LOCATION CERTIFICATE: NGL C-2B

SECTION 28, TOWNSHIP 1 NORTH, RANGE 67 WEST, 6TH P.M. WELD COUNTY, COLORADO



SURVEYOR'S CERTIFICATION:

I, hereby certify to NGL WATER SOLUTIONS DJ, LLC, that this Well Location Certificate shown hereon was done by me or under my direct supervision and that the drawing shown hereon accurately depicts the proposed location of the well. This certificate does not represent a Land Survey Plat or Improvement Survey Plat as defined by C.R.S. 38-51-102 and cannot be relied upon to determine ownership.

NOTES:

- Denotes Found Section Corner
- Denotes Calculated Section Corner
- Basis of Bearings are based on the Colorado State Plane Coordinate System, NAD 1983, derived by GPS observations. Shown hereon as label between monuments.
Combined Factor (CF)=0.999725171; 1/CF=1.000274904
All measured distances are "Grid." Elevations are based on NAVD88 (GEOID12).
- Surface use of location is: **DRY CROPLAND** PDOP: 1.5
GPS Operator: Monty Wallace
- See attachment to Well Location Certificate for existing improvements within 500 feet of the well pad.
- Well footages are measured at right angles to the section lines.

Mark A. Hall, PLS #36073
FOR AND ON BEHALF OF: ACKLAM, INC.

NOTICE: According to Colorado law you must commence any legal action based upon any defect in this survey within three years after you first discover such defect. In no event may any action based upon any defect in this survey be commenced more than ten years from the date of the certification shown hereon.

PREPARED FOR:

NGL WATER
SOLUTIONS DJ, LLC

Acklam, Inc.

WELL PAD - NGL C-2B

NGL C-2B

2473' FNL & 852' FEL (SURFACE)

DATE SURVEYED: 08/27/2015

DATE DRAFTED: 09/14/2015

DRAFTED BY: SMF

CHECKED BY: JAM

JOB No. 155081

REVISED: