

BONANZA CREEK ENERGY INC.

WELD COUNTY, COLORADO (NAD 83)

SE SE SEC. 1 T5N R62W 6th P.M.

STATE ANTELOPE 44-1-36XRLNB

JOB #2015-049-020

11 July, 2015

Survey: FINAL SURVEYS

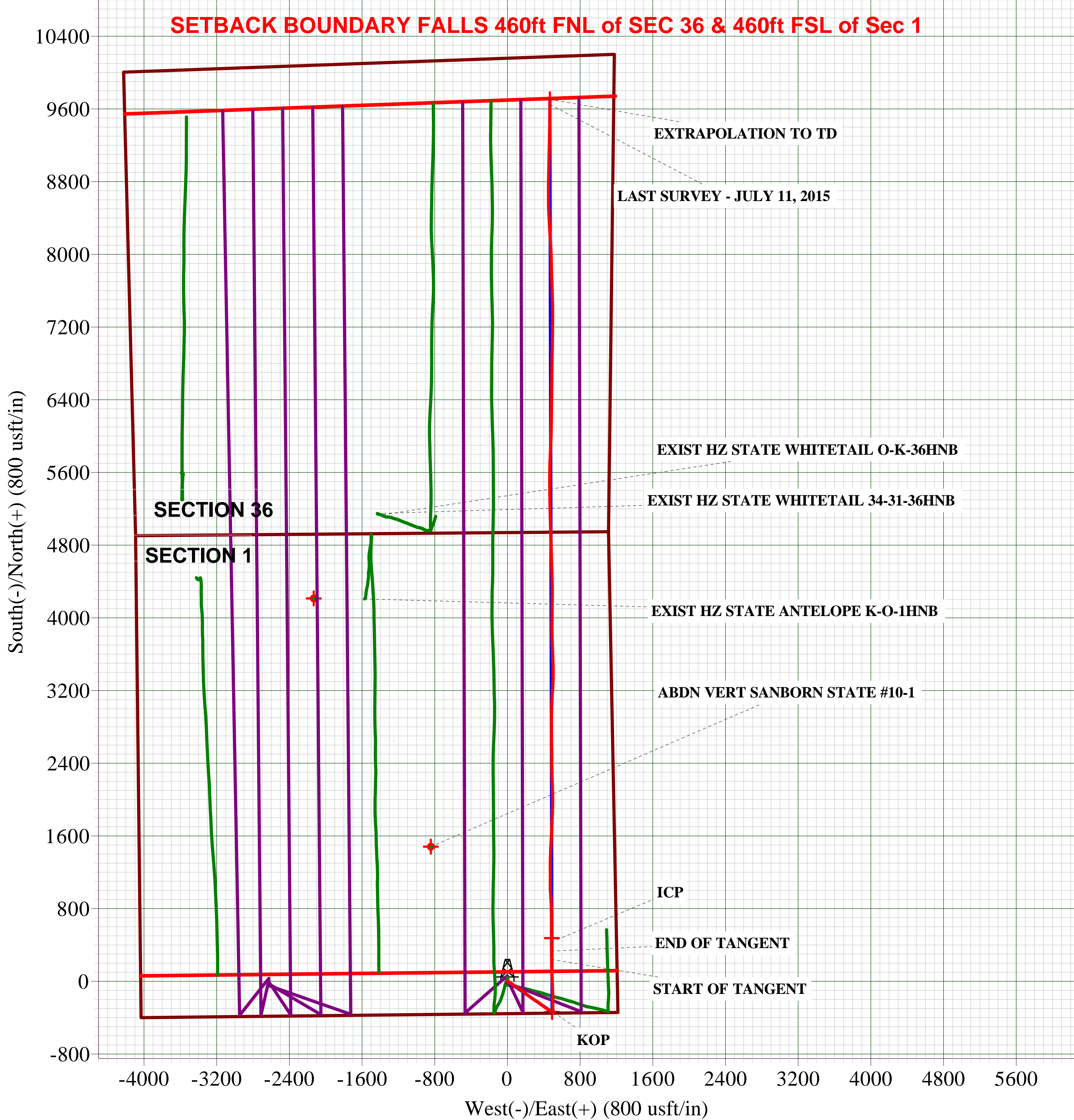
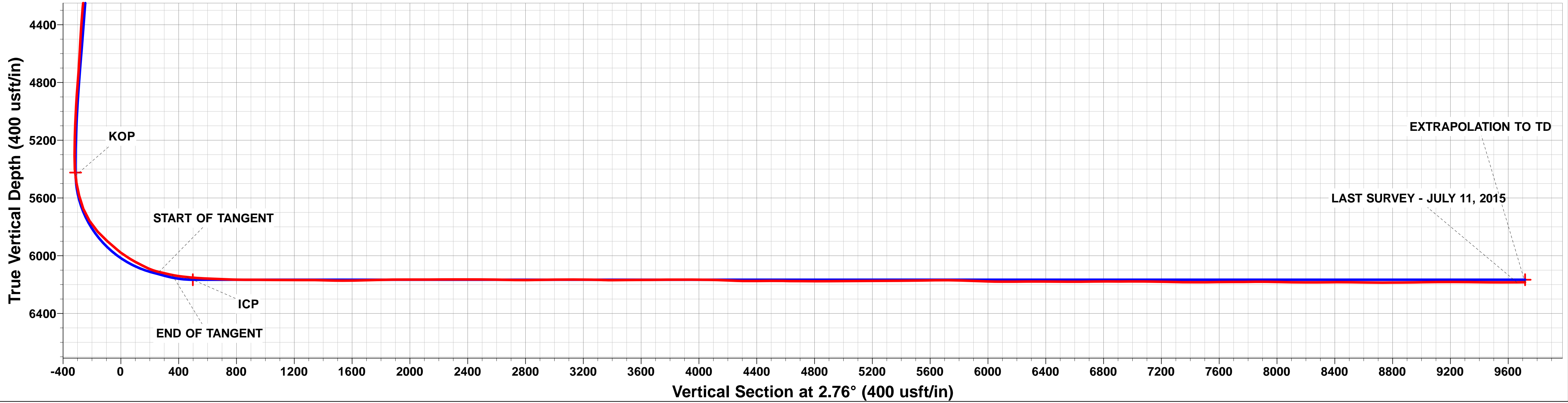
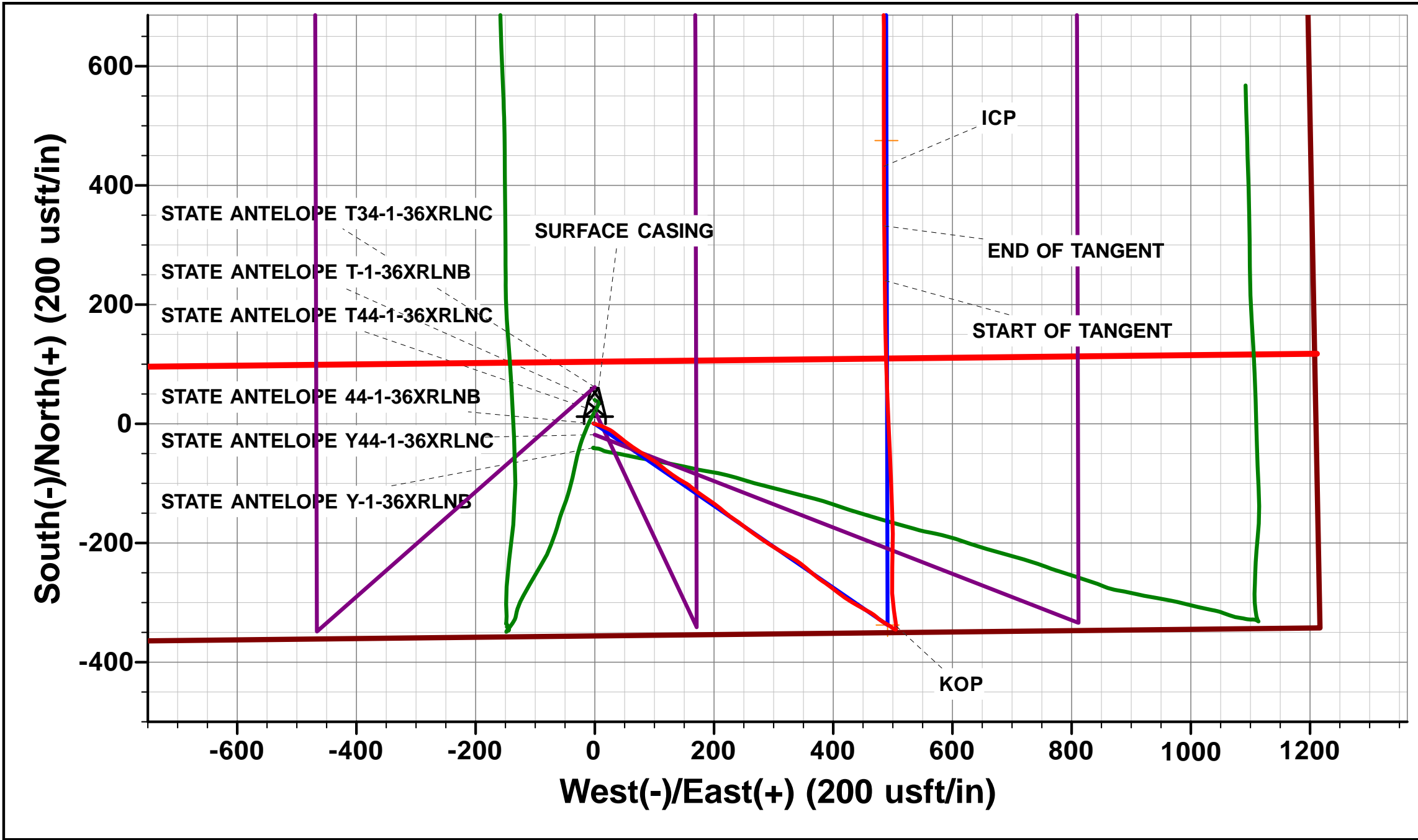
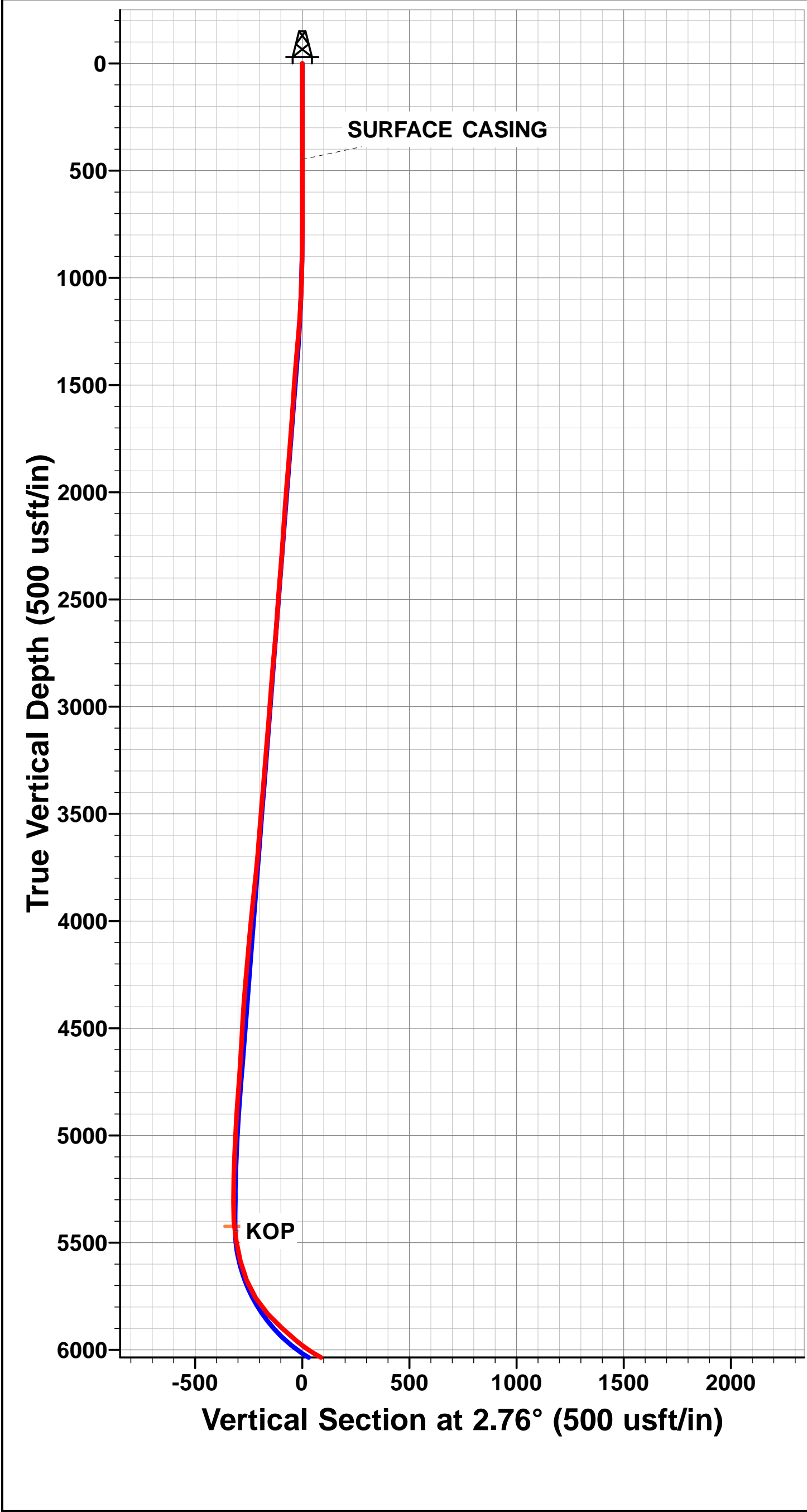




Project: WELD COUNTY, COLORADO (NAD 83)
Site: SE SE SEC. 1 T5N R62W 6th P.M.
Well: STATE ANTELOPE 44-1-36XRLNB
Wellbore: JOB #2015-049-020
Design: FINAL SURVEYS

ANNOTATIONS										AS DRILLED LOCAL COORDINATES: SHL: 357ft FSL & 1210ft FEL Sec 1 7" ICP: 814ft FSL & 716ft FEL Sec 1 TOP OF PRODUCTION: 814ft FSL & 716ft FEL of Sec 1 BHL: 470.ft FNL & 704ft FEL Sec 36
TVD	MD	Inc	Azi	+N/-S	+E/-W	VSect	Dep	Annotation		
448.0	448.0	0.38	293.10	0.6	-1.4	0.5	1.6	SURFACE CASING		
5445.7	5490.0	6.55	354.19	-339.4	505.8	-314.6	627.9	KOP		
6112.9	6430.0	77.10	359.40	240.5	486.5	263.6	1207.3	START OF TANGENT		
6133.6	6524.0	78.30	359.20	332.2	485.6	355.2	1299.0	END OF TANGENT		
6148.0	6625.0	84.12	359.78	432.1	485.4	455.0	1398.9	ICP		
6184.4	15847.0	90.70	0.20	9648.8	468.2	9660.2	10619.4	LAST SURVEY - JULY 11, 2015		
6183.8	15903.0	90.70	0.20	9704.8	468.4	9716.1	10675.4	EXTRAPOLATION TO TD		

WELLBORE TARGET DETAILS (LAT/LONG)					
Name	TVD	+N/-S	+E/-W	Latitude	Longitude
KOP - STATE ANTELOPE 44-1-36XRLNB (P3)	5424.4	-337.5	491.3	40.422894	-104.264455
7" ICP *NEW* - STATE ANTELOPE 44-1-36XRLNB (P3)	6166.5	475.3	489.3	40.425125	-104.264463
BHL - STATE ANTELOPE 44-1-36XRLNB (P3)	6166.5	9705.4	467.6	40.450460	-104.264540



Survey Report



Company:	BONANZA CREEK ENERGY INC.	Local Co-ordinate Reference:	Well STATE ANTELOPE 44-1-36XRLNB
Project:	WELD COUNTY, COLORADO (NAD 83)	TVD Reference:	KB @ 4675.5usft (EXTREME 20)
Site:	SE SE SEC. 1 T5N R62W 6th P.M.	MD Reference:	KB @ 4675.5usft (EXTREME 20)
Well:	STATE ANTELOPE 44-1-36XRLNB	North Reference:	True
Wellbore:	JOB #2015-049-020	Survey Calculation Method:	Minimum Curvature
Design:	FINAL SURVEYS	Database:	EDM 5000.1 Single User Db

Project	WELD COUNTY, COLORADO (NAD 83)		
Map System:	US State Plane 1983	System Datum:	Mean Sea Level
Geo Datum:	North American Datum 1983		
Map Zone:	Colorado Northern Zone		Using geodetic scale factor

Site	SE SE SEC. 1 T5N R62W 6th P.M.				
Site Position:		Northing:	1,399,587.47 usft	Latitude:	40.423710
From:	Lat/Long	Easting:	3,343,486.46 usft	Longitude:	-104.266230
Position Uncertainty:	0.0 usft	Slot Radius:	1.10000 ft	Grid Convergence:	0.80 °

Well	STATE ANTELOPE 44-1-36XRLNB					
Well Position	+N/-S	0.0 usft	Northing:	1,399,627.55 usft	Latitude:	40.423820
	+E/-W	0.0 usft	Easting:	3,343,488.69 usft	Longitude:	-104.266220
Position Uncertainty		0.0 usft	Wellhead Elevation:	usft	Ground Level:	4,659.0 usft

Wellbore	JOB #2015-049-020				
Magnetics	Model Name	Sample Date	Declination (°)	Dip Angle (°)	Field Strength (nT)
	IGRF2015	05/06/2015	8.16	67.00	52,690

Design	FINAL SURVEYS				
Audit Notes:					
Version:	1.0	Phase:	ACTUAL	Tie On Depth:	0.0
Vertical Section:	Depth From (TVD) (usft)		+N/-S (usft)	+E/-W (usft)	Direction (°)
	0.0		0.0	0.0	2.76

Survey Program	Date	11/07/2015			
From (usft)	To (usft)	Survey (Wellbore)	Tool Name	Description	
466.9	15,903.0	FINAL SURVEYS (JOB #2015-049-020)	MWD	MWD - Standard	

Survey										
Measured Depth (usft)	Inclination (°)	Azimuth (°)	Vertical Depth (usft)	Subsea Depth (usft)	+N/-S (usft)	+E/-W (usft)	Vertical Section (usft)	Dogleg Rate (°/100usft)	Build Rate (°/100usft)	Turn Rate (°/100usft)
0.0	0.00	0.00	0.0	-4,675.5	0.0	0.0	0.0	0.00	0.00	0.00
SURFACE CASING										
448.0	0.38	293.10	448.0	-4,227.5	0.6	-1.4	0.5	0.09	0.09	0.00
467.0	0.40	293.10	467.0	-4,208.5	0.6	-1.5	0.6	0.09	0.09	0.00
560.0	0.20	288.60	560.0	-4,115.5	0.8	-2.0	0.7	0.22	-0.22	-4.84
655.0	0.10	213.10	655.0	-4,020.5	0.8	-2.2	0.7	0.21	-0.11	-79.47
749.0	0.10	215.00	749.0	-3,926.5	0.7	-2.2	0.6	0.00	0.00	2.02
842.0	1.30	105.50	842.0	-3,833.5	0.3	-1.3	0.3	1.44	1.29	-117.74
937.0	5.80	105.10	936.8	-3,738.7	-1.2	4.4	-1.0	4.74	4.74	-0.42
1,030.0	5.60	115.40	1,029.3	-3,646.2	-4.4	13.0	-3.8	1.12	-0.22	11.08
1,125.0	6.60	114.00	1,123.8	-3,551.7	-8.6	22.2	-7.5	1.06	1.05	-1.47
1,219.0	8.50	128.70	1,217.0	-3,458.5	-15.1	32.6	-13.6	2.87	2.02	15.64
1,314.0	8.60	128.30	1,310.9	-3,364.6	-23.9	43.6	-21.8	0.12	0.11	-0.42

Survey Report



Company:	BONANZA CREEK ENERGY INC.	Local Co-ordinate Reference:	Well STATE ANTELOPE 44-1-36XRLNB
Project:	WELD COUNTY, COLORADO (NAD 83)	TVD Reference:	KB @ 4675.5usft (EXTREME 20)
Site:	SE SE SEC. 1 T5N R62W 6th P.M.	MD Reference:	KB @ 4675.5usft (EXTREME 20)
Well:	STATE ANTELOPE 44-1-36XRLNB	North Reference:	True
Wellbore:	JOB #2015-049-020	Survey Calculation Method:	Minimum Curvature
Design:	FINAL SURVEYS	Database:	EDM 5000.1 Single User Db

Survey										
Measured Depth (usft)	Inclination (°)	Azimuth (°)	Vertical Depth (usft)	Subsea Depth (usft)	+N/-S (usft)	+E/-W (usft)	Vertical Section (usft)	Dogleg Rate (°/100usft)	Build Rate (°/100usft)	Turn Rate (°/100usft)
1,408.0	8.40	127.30	1,403.9	-3,271.6	-32.5	54.6	-29.8	0.26	-0.21	-1.06
1,502.0	8.00	124.00	1,496.9	-3,178.6	-40.3	65.5	-37.1	0.66	-0.43	-3.51
1,596.0	7.50	121.00	1,590.1	-3,085.4	-47.1	76.2	-43.4	0.68	-0.53	-3.19
1,690.0	8.00	125.70	1,683.2	-2,992.3	-54.1	86.7	-49.8	0.86	0.53	5.00
1,785.0	8.10	120.70	1,777.3	-2,898.2	-61.3	97.9	-56.6	0.74	0.11	-5.26
1,879.0	8.40	129.90	1,870.3	-2,805.2	-69.1	108.8	-63.8	1.44	0.32	9.79
1,973.0	8.10	127.90	1,963.3	-2,712.2	-77.6	119.3	-71.8	0.44	-0.32	-2.13
2,066.0	8.00	124.60	2,055.4	-2,620.1	-85.3	129.8	-79.0	0.51	-0.11	-3.55
2,160.0	7.90	123.70	2,148.5	-2,527.0	-92.6	140.6	-85.7	0.17	-0.11	-0.96
2,253.0	7.50	117.30	2,240.7	-2,434.8	-98.9	151.3	-91.5	1.02	-0.43	-6.88
2,347.0	8.50	130.90	2,333.8	-2,341.7	-106.3	162.0	-98.4	2.27	1.06	14.47
2,441.0	8.00	126.40	2,426.8	-2,248.7	-114.7	172.5	-106.3	0.87	-0.53	-4.79
2,535.0	7.80	122.60	2,519.9	-2,155.6	-122.0	183.1	-113.1	0.59	-0.21	-4.04
2,628.0	7.80	125.10	2,612.0	-2,063.5	-129.1	193.6	-119.6	0.36	0.00	2.69
2,722.0	8.90	128.00	2,705.0	-1,970.5	-137.2	204.6	-127.2	1.25	1.17	3.09
2,816.0	8.40	129.70	2,798.0	-1,877.5	-146.1	215.6	-135.5	0.60	-0.53	1.81
2,910.0	7.90	128.00	2,891.0	-1,784.5	-154.4	226.0	-143.4	0.59	-0.53	-1.81
3,003.0	7.80	122.30	2,983.2	-1,692.3	-161.7	236.3	-150.2	0.84	-0.11	-6.13
3,097.0	8.40	128.50	3,076.2	-1,599.3	-169.4	247.1	-157.3	1.13	0.64	6.60
3,192.0	8.00	126.70	3,170.2	-1,505.3	-177.7	257.8	-165.1	0.50	-0.42	-1.89
3,286.0	8.80	125.10	3,263.2	-1,412.3	-185.7	268.9	-172.6	0.89	0.85	-1.70
3,380.0	9.30	124.10	3,356.1	-1,319.4	-194.1	281.1	-180.4	0.56	0.53	-1.06
3,474.0	9.40	123.30	3,448.8	-1,226.7	-202.6	293.8	-188.2	0.17	0.11	-0.85
3,568.0	9.60	121.40	3,541.5	-1,134.0	-210.9	306.9	-195.9	0.40	0.21	-2.02
3,662.0	9.50	119.30	3,634.2	-1,041.3	-218.8	320.4	-203.1	0.39	-0.11	-2.23
3,755.0	10.70	121.20	3,725.8	-949.7	-227.0	334.5	-210.7	1.34	1.29	2.04
3,849.0	10.30	129.90	3,818.2	-857.3	-236.9	348.4	-219.9	1.74	-0.43	9.26
3,941.0	9.90	129.60	3,908.8	-766.7	-247.2	360.8	-229.6	0.44	-0.43	-0.33
4,035.0	9.80	127.40	4,001.4	-674.1	-257.3	373.4	-239.0	0.41	-0.11	-2.34
4,129.0	9.50	124.60	4,094.1	-581.4	-266.5	386.1	-247.6	0.59	-0.32	-2.98
4,223.0	8.80	127.90	4,186.9	-488.6	-275.3	398.2	-255.9	0.93	-0.74	3.51
4,317.0	8.30	128.10	4,279.8	-395.7	-283.9	409.2	-263.9	0.53	-0.53	0.21
4,411.0	8.00	125.10	4,372.9	-302.6	-291.9	419.9	-271.3	0.55	-0.32	-3.19
4,505.0	7.40	121.00	4,466.0	-209.5	-298.8	430.4	-277.7	0.87	-0.64	-4.36
4,599.0	6.80	118.10	4,559.3	-116.2	-304.5	440.5	-283.0	0.74	-0.64	-3.09
4,693.0	8.20	120.70	4,652.5	-23.0	-310.5	451.2	-288.5	1.53	1.49	2.77
4,787.0	7.90	117.90	4,745.6	70.1	-317.0	462.7	-294.4	0.53	-0.32	-2.98
4,881.0	7.90	132.10	4,838.7	163.2	-324.3	473.2	-301.2	2.07	0.00	15.11
4,975.0	6.30	122.80	4,932.0	256.5	-331.5	482.3	-307.9	2.09	-1.70	-9.89
5,069.0	5.40	119.50	5,025.5	350.0	-336.4	490.5	-312.5	1.02	-0.96	-3.51
5,163.0	4.80	126.90	5,119.1	443.6	-341.0	497.5	-316.7	0.95	-0.64	7.87
5,257.0	2.20	112.20	5,212.9	537.4	-344.0	502.3	-319.5	2.90	-2.77	-15.64
5,351.0	1.30	128.20	5,306.9	631.4	-345.4	504.8	-320.7	1.08	-0.96	17.02
5,445.0	3.40	5.50	5,400.8	725.3	-343.3	505.9	-318.5	4.52	2.23	-130.53
KOP										
5,490.0	6.55	354.19	5,445.7	770.2	-339.4	505.8	-314.6	7.29	6.99	-25.12
5,538.0	10.00	350.10	5,493.2	817.7	-332.5	504.8	-307.9	7.29	7.19	-8.53
5,632.0	14.00	352.30	5,585.1	909.6	-313.2	501.8	-288.7	4.28	4.26	2.34
5,727.0	22.00	355.80	5,675.4	999.9	-284.0	499.0	-259.7	8.49	8.42	3.68
5,821.0	32.40	3.40	5,758.9	1,083.4	-241.2	499.2	-216.9	11.64	11.06	8.09
5,915.0	42.10	358.90	5,833.6	1,158.1	-184.4	500.1	-160.1	10.71	10.32	-4.79
6,008.0	48.30	357.40	5,899.1	1,223.6	-118.5	497.9	-94.4	6.76	6.67	-1.61
6,102.0	50.10	358.00	5,960.6	1,285.1	-47.4	495.1	-23.5	1.97	1.91	0.64

Survey Report



Company:	BONANZA CREEK ENERGY INC.	Local Co-ordinate Reference:	Well STATE ANTELOPE 44-1-36XRLNB
Project:	WELD COUNTY, COLORADO (NAD 83)	TVD Reference:	KB @ 4675.5usft (EXTREME 20)
Site:	SE SE SEC. 1 T5N R62W 6th P.M.	MD Reference:	KB @ 4675.5usft (EXTREME 20)
Well:	STATE ANTELOPE 44-1-36XRLNB	North Reference:	True
Wellbore:	JOB #2015-049-020	Survey Calculation Method:	Minimum Curvature
Design:	FINAL SURVEYS	Database:	EDM 5000.1 Single User Db

Survey										
Measured Depth (usft)	Inclination (°)	Azimuth (°)	Vertical Depth (usft)	Subsea Depth (usft)	+N/-S (usft)	+E/-W (usft)	Vertical Section (usft)	Dogleg Rate (°/100usft)	Build Rate (°/100usft)	Turn Rate (°/100usft)
6,196.0	58.90	357.10	6,015.1	1,339.6	29.0	491.8	52.6	9.39	9.36	-0.96
6,241.0	60.70	357.50	6,037.7	1,362.2	67.8	489.9	91.3	4.07	4.00	0.89
6,290.0	63.30	358.80	6,060.7	1,385.2	111.1	488.5	134.4	5.80	5.31	2.65
6,335.0	63.70	359.20	6,080.8	1,405.3	151.3	487.8	174.6	1.19	0.89	0.89
6,385.0	70.40	359.00	6,100.3	1,424.8	197.3	487.1	220.5	13.41	13.40	-0.40
START OF TANGENT										
6,430.0	77.10	359.40	6,112.9	1,437.4	240.5	486.5	263.6	14.91	14.89	0.89
6,479.0	76.90	359.50	6,123.9	1,448.4	288.2	486.1	311.3	0.45	-0.41	0.20
END OF TANGENT										
6,524.0	78.30	359.20	6,133.6	1,458.1	332.2	485.6	355.2	3.18	3.11	-0.67
6,573.0	82.20	0.30	6,141.9	1,466.4	380.5	485.3	403.4	8.26	7.96	2.24
6,620.0	84.00	359.80	6,147.5	1,472.0	427.1	485.4	450.0	3.97	3.83	-1.06
ICP										
6,625.0	84.12	359.78	6,148.0	1,472.5	432.1	485.4	455.0	2.50	2.46	-0.46
6,685.0	85.60	359.50	6,153.4	1,477.9	491.9	485.0	514.6	2.50	2.46	-0.46
6,773.0	87.40	0.50	6,158.8	1,483.3	579.7	485.0	602.4	2.34	2.05	1.14
6,860.0	88.00	359.70	6,162.3	1,486.8	666.6	485.1	689.2	1.15	0.69	-0.92
6,945.0	87.90	358.90	6,165.3	1,489.8	751.6	484.1	774.0	0.95	-0.12	-0.94
7,030.0	90.00	358.50	6,166.9	1,491.4	836.5	482.2	858.7	2.51	2.47	-0.47
7,117.0	89.80	356.00	6,167.0	1,491.5	923.4	478.0	945.3	2.88	-0.23	-2.87
7,202.0	89.40	357.90	6,167.6	1,492.1	1,008.3	473.5	1,029.9	2.28	-0.47	2.24
7,287.0	89.60	1.00	6,168.3	1,492.8	1,093.3	472.7	1,114.7	3.65	0.24	3.65
7,372.0	89.50	359.70	6,169.0	1,493.5	1,178.3	473.2	1,199.7	1.53	-0.12	-1.53
7,457.0	90.60	359.50	6,168.9	1,493.4	1,263.3	472.6	1,284.5	1.32	1.29	-0.24
7,542.0	88.80	1.00	6,169.4	1,493.9	1,348.2	473.0	1,369.4	2.76	-2.12	1.76
7,627.0	87.90	2.10	6,171.8	1,496.3	1,433.2	475.3	1,454.4	1.67	-1.06	1.29
7,711.0	90.40	3.40	6,173.1	1,497.6	1,517.1	479.3	1,538.4	3.35	2.98	1.55
7,797.0	91.10	3.10	6,172.0	1,496.5	1,602.9	484.2	1,624.4	0.89	0.81	-0.35
7,882.0	92.00	2.50	6,169.7	1,494.2	1,687.8	488.3	1,709.3	1.27	1.06	-0.71
7,967.0	91.30	2.00	6,167.2	1,491.7	1,772.7	491.7	1,794.3	1.01	-0.82	-0.59
8,052.0	90.40	2.60	6,165.9	1,490.4	1,857.6	495.1	1,879.3	1.27	-1.06	0.71
8,136.0	90.20	1.60	6,165.5	1,490.0	1,941.5	498.1	1,963.3	1.21	-0.24	-1.19
8,221.0	89.80	358.50	6,165.5	1,490.0	2,026.5	498.2	2,048.2	3.68	-0.47	-3.65
8,306.0	90.30	358.50	6,165.4	1,489.9	2,111.5	496.0	2,132.9	0.59	0.59	0.00
8,392.0	90.30	357.30	6,165.0	1,489.5	2,197.4	492.8	2,218.6	1.40	0.00	-1.40
8,477.0	90.40	359.30	6,164.5	1,489.0	2,282.4	490.3	2,303.4	2.36	0.12	2.35
8,562.0	89.10	359.60	6,164.8	1,489.3	2,367.4	489.5	2,388.2	1.57	-1.53	0.35
8,647.0	90.60	359.30	6,165.1	1,489.6	2,452.4	488.7	2,473.1	1.80	1.76	-0.35
8,732.0	88.80	359.00	6,165.5	1,490.0	2,537.4	487.4	2,557.9	2.15	-2.12	-0.35
8,817.0	89.10	358.80	6,167.1	1,491.6	2,622.3	485.8	2,642.7	0.42	0.35	-0.24
8,902.0	88.90	359.70	6,168.5	1,493.0	2,707.3	484.7	2,727.5	1.08	-0.24	1.06
8,987.0	90.70	0.40	6,168.8	1,493.3	2,792.3	484.8	2,812.4	2.27	2.12	0.82
9,072.0	91.50	359.80	6,167.2	1,491.7	2,877.3	484.9	2,897.3	1.18	0.94	-0.71
9,157.0	90.40	1.00	6,165.8	1,490.3	2,962.3	485.5	2,982.2	1.91	-1.29	1.41
9,242.0	89.50	2.50	6,165.9	1,490.4	3,047.2	488.1	3,067.2	2.06	-1.06	1.76
9,327.0	90.60	2.80	6,165.8	1,490.3	3,132.1	492.0	3,152.2	1.34	1.29	0.35
9,411.0	89.30	4.10	6,165.9	1,490.4	3,216.0	497.1	3,236.2	2.19	-1.55	1.55
9,497.0	87.90	2.90	6,168.0	1,492.5	3,301.8	502.3	3,322.2	2.14	-1.63	-1.40
9,582.0	90.00	359.40	6,169.5	1,494.0	3,386.8	504.0	3,407.1	4.80	2.47	-4.12
9,667.0	91.30	358.70	6,168.6	1,493.1	3,471.7	502.6	3,491.9	1.74	1.53	-0.82
9,752.0	89.80	358.00	6,167.7	1,492.2	3,556.7	500.2	3,576.6	1.95	-1.76	-0.82
9,836.0	90.60	357.20	6,167.5	1,492.0	3,640.6	496.7	3,660.3	1.35	0.95	-0.95
9,921.0	90.80	357.30	6,166.4	1,490.9	3,725.5	492.6	3,744.9	0.26	0.24	0.12

Survey Report



Company:	BONANZA CREEK ENERGY INC.	Local Co-ordinate Reference:	Well STATE ANTELOPE 44-1-36XRLNB
Project:	WELD COUNTY, COLORADO (NAD 83)	TVD Reference:	KB @ 4675.5usft (EXTREME 20)
Site:	SE SE SEC. 1 T5N R62W 6th P.M.	KB Reference:	KB @ 4675.5usft (EXTREME 20)
Well:	STATE ANTELOPE 44-1-36XRLNB	North Reference:	True
Wellbore:	JOB #2015-049-020	Survey Calculation Method:	Minimum Curvature
Design:	FINAL SURVEYS	Database:	EDM 5000.1 Single User Db

Survey										
Measured Depth (usft)	Inclination (°)	Azimuth (°)	Vertical Depth (usft)	Subsea Depth (usft)	+N/-S (usft)	+E/-W (usft)	Vertical Section (usft)	Dogleg Rate (°/100usft)	Build Rate (°/100usft)	Turn Rate (°/100usft)
10,006.0	89.40	359.80	6,166.3	1,490.8	3,810.5	490.4	3,829.7	3.37	-1.65	2.94
10,093.0	91.10	0.20	6,165.9	1,490.4	3,897.5	490.4	3,916.6	2.01	1.95	0.46
10,178.0	88.70	1.30	6,166.0	1,490.5	3,982.5	491.5	4,001.5	3.11	-2.82	1.29
10,263.0	88.90	0.00	6,167.8	1,492.3	4,067.4	492.5	4,086.4	1.55	0.24	-1.53
10,346.0	87.90	1.00	6,170.1	1,494.6	4,150.4	493.2	4,169.3	1.70	-1.20	1.20
10,438.0	87.60	0.40	6,173.7	1,498.2	4,242.3	494.4	4,261.2	0.73	-0.33	-0.65
10,529.0	90.50	358.70	6,175.3	1,499.8	4,333.3	493.6	4,352.0	3.69	3.19	-1.87
10,621.0	90.50	358.40	6,174.5	1,499.0	4,425.3	491.3	4,443.8	0.33	0.00	-0.33
10,712.0	89.10	358.90	6,174.8	1,499.3	4,516.2	489.2	4,534.5	1.63	-1.54	0.55
10,805.0	89.80	357.50	6,175.7	1,500.2	4,609.2	486.2	4,627.2	1.68	0.75	-1.51
10,896.0	89.30	358.70	6,176.4	1,500.9	4,700.1	483.2	4,717.9	1.43	-0.55	1.32
10,988.0	89.80	357.40	6,177.1	1,501.6	4,792.1	480.1	4,809.6	1.51	0.54	-1.41
11,080.0	90.70	359.00	6,176.7	1,501.2	4,884.0	477.2	4,901.3	2.00	0.98	1.74
11,172.0	90.40	359.00	6,175.8	1,500.3	4,976.0	475.6	4,993.1	0.33	-0.33	0.00
11,264.0	90.30	357.60	6,175.3	1,499.8	5,067.9	472.9	5,084.8	1.53	-0.11	-1.52
11,355.0	90.30	359.60	6,174.8	1,499.3	5,158.9	470.7	5,175.6	2.20	0.00	2.20
11,447.0	90.50	358.00	6,174.1	1,498.6	5,250.9	468.7	5,267.4	1.75	0.22	-1.74
11,539.0	90.50	359.50	6,173.3	1,497.8	5,342.9	466.7	5,359.1	1.63	0.00	1.63
11,630.0	90.00	359.50	6,172.9	1,497.4	5,433.9	465.9	5,450.0	0.55	-0.55	0.00
11,722.0	91.10	359.70	6,172.0	1,496.5	5,525.8	465.3	5,541.8	1.22	1.20	0.22
11,813.0	91.20	1.30	6,170.2	1,494.7	5,616.8	466.1	5,632.7	1.76	0.11	1.76
11,905.0	89.20	1.90	6,169.9	1,494.4	5,708.8	468.6	5,724.7	2.27	-2.17	0.65
11,997.0	88.40	2.50	6,171.8	1,496.3	5,800.7	472.2	5,816.7	1.09	-0.87	0.65
12,088.0	87.80	2.80	6,174.8	1,499.3	5,891.5	476.4	5,907.6	0.74	-0.66	0.33
12,180.0	88.00	1.00	6,178.2	1,502.7	5,983.4	479.4	5,999.6	1.97	0.22	-1.96
12,272.0	89.90	0.70	6,179.9	1,504.4	6,075.4	480.8	6,091.5	2.09	2.07	-0.33
12,364.0	90.20	1.40	6,179.8	1,504.3	6,167.4	482.5	6,183.5	0.83	0.33	0.76
12,456.0	90.60	1.50	6,179.2	1,503.7	6,259.3	484.8	6,275.4	0.45	0.43	0.11
12,548.0	89.60	0.40	6,179.0	1,503.5	6,351.3	486.3	6,367.4	1.62	-1.09	-1.20
12,640.0	89.80	0.10	6,179.5	1,504.0	6,443.3	486.7	6,459.3	0.39	0.22	-0.33
12,732.0	89.50	0.10	6,180.1	1,504.6	6,535.3	486.9	6,551.2	0.33	-0.33	0.00
12,824.0	90.30	1.40	6,180.2	1,504.7	6,627.3	488.1	6,643.1	1.66	0.87	1.41
12,916.0	91.30	0.70	6,178.9	1,503.4	6,719.3	489.8	6,735.1	1.33	1.09	-0.76
13,008.0	89.60	1.50	6,178.2	1,502.7	6,811.3	491.5	6,827.0	2.04	-1.85	0.87
13,100.0	89.60	0.40	6,178.9	1,503.4	6,903.3	493.1	6,919.0	1.20	0.00	-1.20
13,186.0	90.60	1.20	6,178.7	1,503.2	6,989.2	494.3	7,004.9	1.49	1.16	0.93
13,271.0	89.60	1.00	6,178.6	1,503.1	7,074.2	495.9	7,089.9	1.20	-1.18	-0.24
13,356.0	88.50	359.80	6,180.0	1,504.5	7,159.2	496.5	7,174.8	1.91	-1.29	-1.41
13,441.0	88.80	0.80	6,182.0	1,506.5	7,244.2	496.9	7,259.7	1.23	0.35	1.18
13,526.0	89.40	0.50	6,183.3	1,507.8	7,329.2	497.9	7,344.6	0.79	0.71	-0.35
13,611.0	89.80	358.40	6,183.9	1,508.4	7,414.2	497.1	7,429.5	2.51	0.47	-2.47
13,696.0	90.20	358.80	6,183.9	1,508.4	7,499.1	495.0	7,514.3	0.67	0.47	0.47
13,781.0	91.40	358.40	6,182.7	1,507.2	7,584.1	492.9	7,599.0	1.49	1.41	-0.47
13,866.0	89.80	357.40	6,181.8	1,506.3	7,669.0	489.8	7,683.7	2.22	-1.88	-1.18
13,950.0	90.50	358.70	6,181.6	1,506.1	7,753.0	487.0	7,767.4	1.76	0.83	1.55
14,035.0	90.70	358.20	6,180.7	1,505.2	7,837.9	484.7	7,852.2	0.63	0.24	-0.59
14,120.0	88.80	358.70	6,181.1	1,505.6	7,922.9	482.4	7,936.9	2.31	-2.24	0.59
14,205.0	88.90	357.80	6,182.8	1,507.3	8,007.8	479.8	8,021.7	1.07	0.12	-1.06
14,289.0	89.40	357.30	6,184.0	1,508.5	8,091.8	476.2	8,105.3	0.84	0.60	-0.60
14,374.0	89.50	355.60	6,184.9	1,509.4	8,176.6	470.9	8,189.8	2.00	0.12	-2.00
14,459.0	90.20	358.00	6,185.1	1,509.6	8,261.5	466.2	8,274.3	2.94	0.82	2.82
14,544.0	91.10	356.50	6,184.1	1,508.6	8,346.3	462.1	8,358.9	2.06	1.06	-1.76
14,629.0	90.00	356.60	6,183.3	1,507.8	8,431.2	457.0	8,443.4	1.30	-1.29	0.12

Survey Report



Company:	BONANZA CREEK ENERGY INC.	Local Co-ordinate Reference:	Well STATE ANTELOPE 44-1-36XRLNB
Project:	WELD COUNTY, COLORADO (NAD 83)	TVD Reference:	KB @ 4675.5usft (EXTREME 20)
Site:	SE SE SEC. 1 T5N R62W 6th P.M.	MD Reference:	KB @ 4675.5usft (EXTREME 20)
Well:	STATE ANTELOPE 44-1-36XRLNB	North Reference:	True
Wellbore:	JOB #2015-049-020	Survey Calculation Method:	Minimum Curvature
Design:	FINAL SURVEYS	Database:	EDM 5000.1 Single User Db

Survey										
Measured Depth (usft)	Inclination (°)	Azimuth (°)	Vertical Depth (usft)	Subsea Depth (usft)	+N/-S (usft)	+E/-W (usft)	Vertical Section (usft)	Dogleg Rate (°/100usft)	Build Rate (°/100usft)	Turn Rate (°/100usft)
14,714.0	88.70	358.30	6,184.3	1,508.8	8,516.1	453.2	8,528.0	2.52	-1.53	2.00
14,799.0	89.20	0.20	6,185.8	1,510.3	8,601.1	452.1	8,612.9	2.31	0.59	2.24
14,884.0	90.10	0.30	6,186.3	1,510.8	8,686.1	452.5	8,697.8	1.07	1.06	0.12
14,969.0	90.10	359.80	6,186.2	1,510.7	8,771.1	452.5	8,782.7	0.59	0.00	-0.59
15,054.0	90.20	1.80	6,186.0	1,510.5	8,856.0	453.7	8,867.6	2.36	0.12	2.35
15,139.0	91.30	1.00	6,184.9	1,509.4	8,941.0	455.8	8,952.6	1.60	1.29	-0.94
15,224.0	90.90	0.70	6,183.2	1,507.7	9,026.0	457.1	9,037.5	0.59	-0.47	-0.35
15,309.0	90.40	2.00	6,182.3	1,506.8	9,111.0	459.1	9,122.5	1.64	-0.59	1.53
15,394.0	89.40	0.90	6,182.4	1,506.9	9,195.9	461.2	9,207.5	1.75	-1.18	-1.29
15,479.0	90.20	1.80	6,182.7	1,507.2	9,280.9	463.2	9,292.4	1.42	0.94	1.06
15,565.0	88.80	1.20	6,183.5	1,508.0	9,366.9	465.5	9,378.4	1.77	-1.63	-0.70
15,653.0	89.60	359.80	6,184.7	1,509.2	9,454.9	466.2	9,466.3	1.83	0.91	-1.59
15,740.0	89.90	1.40	6,185.1	1,509.6	9,541.8	467.1	9,553.3	1.87	0.34	1.84
15,826.0	90.60	0.00	6,184.7	1,509.2	9,627.8	468.2	9,639.2	1.82	0.81	-1.63
LAST SURVEY - JULY 11, 2015										
15,847.0	90.70	0.20	6,184.4	1,508.9	9,648.8	468.2	9,660.2	1.06	0.48	0.95
EXTRAPOLATION TO TD										
15,903.0	90.70	0.20	6,183.8	1,508.3	9,704.8	468.4	9,716.1	0.00	0.00	0.00

Survey Report



Company:	BONANZA CREEK ENERGY INC.	Local Co-ordinate Reference:	Well STATE ANTELOPE 44-1-36XRLNB
Project:	WELD COUNTY, COLORADO (NAD 83)	TVD Reference:	KB @ 4675.5usft (EXTREME 20)
Site:	SE SE SEC. 1 T5N R62W 6th P.M.	MD Reference:	KB @ 4675.5usft (EXTREME 20)
Well:	STATE ANTELOPE 44-1-36XRLNB	North Reference:	True
Wellbore:	JOB #2015-049-020	Survey Calculation Method:	Minimum Curvature
Design:	FINAL SURVEYS	Database:	EDM 5000.1 Single User Db

Targets									
Target Name - hit/miss target - Shape	Dip Angle (°)	Dip Dir. (°)	TVD (usft)	+N/-S (usft)	+E/-W (usft)	Northing (usft)	Easting (usft)	Latitude	Longitude
ABDN VERT SANBORN - survey misses target center by 1676.1usft at 7627.2usft MD (6171.8 TVD, 1433.4 N, 475.3 E) - Circle (radius 30.0)	0.00	0.00	7,206.5	1,481.3	-842.5	1,401,096.96	3,342,625.74	40.427886	-104.269246
KOP - STATE ANTELOF - survey misses target center by 15.2usft at 5469.0usft MD (5424.8 TVD, -341.5 N, 505.9 E) - Point	0.00	0.00	5,424.4	-337.5	491.3	1,399,296.95	3,343,984.62	40.422894	-104.264455
7" ICP *NEW* - STATE / - survey misses target center by 52.3usft at 6438.0usft MD (6114.7 TVD, 248.3 N, 486.4 E) - Point	0.00	0.00	6,165.5	236.6	489.9	1,399,870.95	3,343,975.23	40.424469	-104.264460
BHL - STATE ANTELOP - survey misses target center by 17.3usft at 15903.0usft MD (6183.8 TVD, 9704.8 N, 468.4 E) - Point	0.00	0.00	6,166.5	9,705.4	467.6	1,409,338.10	3,343,821.17	40.450460	-104.264540
BHL - STATE ANTELOP - survey misses target center by 18.3usft at 15903.0usft MD (6183.8 TVD, 9704.8 N, 468.4 E) - Point	0.00	0.00	6,165.5	9,705.4	467.6	1,409,338.10	3,343,821.17	40.450460	-104.264540
KOP - STATE ANTELOF - survey misses target center by 14.9usft at 5478.0usft MD (5433.7 TVD, -340.6 N, 505.9 E) - Point	0.00	0.00	5,433.4	-337.5	491.3	1,399,296.95	3,343,984.62	40.422894	-104.264455
BHL - STATE ANTELOP - survey misses target center by 8.3usft at 15903.0usft MD (6183.8 TVD, 9704.8 N, 468.4 E) - Point	0.00	0.00	6,175.5	9,705.4	467.6	1,409,338.10	3,343,821.17	40.450460	-104.264540
KOP - STATE ANTELOF - survey misses target center by 46.2usft at 5698.3usft MD (5648.5 TVD, -294.2 N, 499.8 E) - Point	0.00	0.00	5,662.2	-337.5	491.3	1,399,296.95	3,343,984.62	40.422894	-104.264455
7" ICP *NEW* - STATE / - survey misses target center by 15.0usft at 6669.7usft MD (6152.2 TVD, 476.6 N, 485.1 E) - Point	0.00	0.00	6,166.5	475.3	489.3	1,400,109.61	3,343,971.31	40.425125	-104.264463
7" ICP *NEW* - STATE / - survey misses target center by 23.7usft at 6670.5usft MD (6152.2 TVD, 477.4 N, 485.1 E) - Point	0.00	0.00	6,175.5	475.3	489.3	1,400,109.61	3,343,971.31	40.425125	-104.264463
ABDN VERT STATE 1 - survey misses target center by 2754.0usft at 10410.0usft MD (6172.6 TVD, 4214.4 N, 494.1 E) - Circle (radius 30.0)	0.00	0.00	7,004.5	4,213.8	-2,131.2	1,403,811.09	3,341,299.11	40.435386	-104.273876

Survey Annotations				
Measured Depth (usft)	Vertical Depth (usft)	Local Coordinates		Comment
		+N/-S (usft)	+E/-W (usft)	
448.0	448.0	0.6	-1.4	SURFACE CASING
5,490.0	5,445.7	-339.4	505.8	KOP
6,430.0	6,112.9	240.5	486.5	START OF TANGENT
6,524.0	6,133.6	332.2	485.6	END OF TANGENT
6,625.0	6,148.0	432.1	485.4	ICP
15,847.0	6,184.4	9,648.8	468.2	LAST SURVEY - JULY 11, 2015
15,903.0	6,183.8	9,704.8	468.4	EXTRAPOLATION TO TD

Checked By: _____	Approved By: _____	Date: _____
-------------------	--------------------	-------------