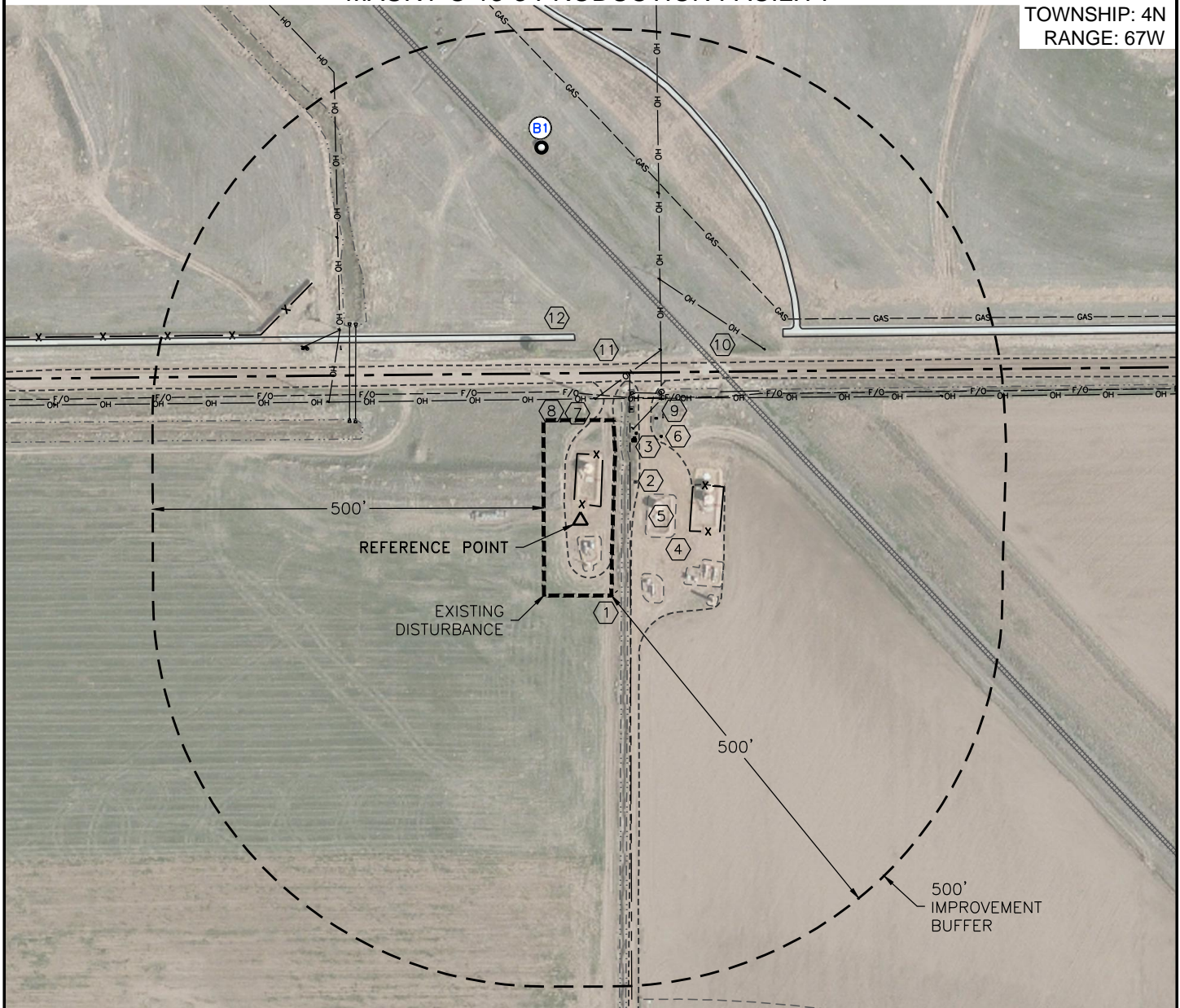


LOCATION DRAWING

MAURY O 13-3 PRODUCTION FACILITY

SECTION: 13
TOWNSHIP: 4N
RANGE: 67W



IMPROVEMENTS:

(MEASURED FROM THE REFERENCED POINT)

- (BU) NO BUILDING UNITS WITHIN THE 500' IMPROVEMENT BUFFER
- (B) BUILDING B1 473' N
- (1) DITCH 53' E, 189' NE, 282' NE, 299' NW, 374' NW
- (2) IRRIGATION EQUIPMENT 86' NE, 157' NE, 163' NE, 413' NW
- (3) ELECTRICAL EQUIPMENT 122' NE, 126' NE, 416' NW, 417' NW
- (4) GRAVEL AREA 66' E
- (5) EX. NOBLE PRODUCTION EQUIPMENT 84' E, 105' SE, 140' E, 149' SE, 190' SE
- (6) FENCE 132' NE, 149' NE, 458' NW
- (7) ABOVE GROUND UTILITY 136' NE, 155' N, 157' N, 313' NE, 356' NW, 392' NW

- (8) UNDERGROUND UTILITY 162' N, 368' NE
- (9) UNDERGROUND PIPE 177' NE, 243' NE, 315' NW, 323' NW
- (10) RAILROAD 260' NE
- (11) COUNTY ROAD (CR 46) 176' N
- (12) CONCRETE WALK 230' N, 350' NE



0 200'
SCALE: 1" = 200'

REFERENCE POINT LOCATION

NE $\frac{1}{4}$ NW $\frac{1}{4}$
188' FNL
2570' FWL
LAT: N 40.31866°
LONG: W 104.83938°
PDOP: 1.8
ELEV: 4751
DATE: 09/11/2015
OPERATOR: ANDY MAGGIORE
DISTANCE TO NEAREST
WELL: 831' SW

ASSOCIATED EXISTING WELLS:

MAURY O 13-3
MAURY O 13-6

MEASURED FROM THE NEAREST	BUILDING	BUILDING UNIT	HIGH OCCUPANCY BUILDING UNIT	DESIGNATED OUTSIDE ACTIVITY AREA	PUBLIC ROAD	ABOVE GROUND UTILITY	RAILROAD	PROPERTY LINE
EDGE OF DISTURBANCE	342' N	1369' NE	1782' NE	5280'+	47' N (CR 46)	25' E	141' NE	19' E

LEGEND

- △ REFERENCE POINT
- ⊙ EXISTING WELL

DATE: 09/17/2015
JOB #: NE15311