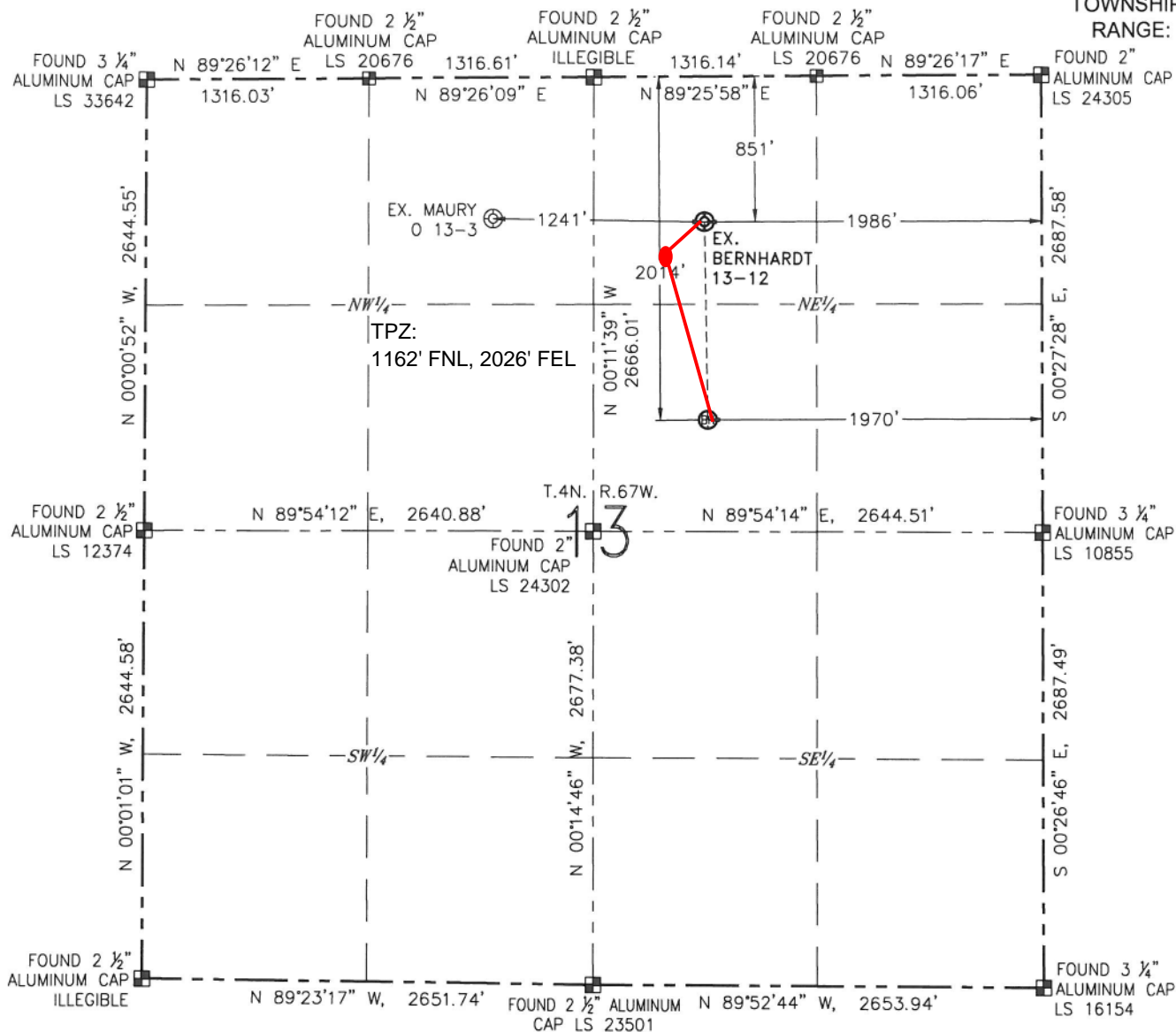


WELL LOCATION CERTIFICATE

BERNHARDT 13-12

SECTION: 13
TOWNSHIP: 4N
RANGE: 67W



NOTES:

- BEARINGS ARE GRID BEARINGS OF THE COLORADO STATE PLANE COORDINATE SYSTEM, NORTH ZONE, NAD 83. THE LINEAL DIMENSIONS SHOWN HEREON ARE BASED UPON THE "U.S. SURVEY FOOT".
- GROUND ELEVATIONS ARE BASED UPON NGS OPUS SOLUTION NAVD 88 DATUM COMPUTED USING GEOID09.
- IMPROVEMENTS: SEE LOCATION DRAWING FOR ALL VISIBLE IMPROVEMENTS WITHIN 500' OF THE DISTURBED AREA.
- SURFACE USE: RANGELAND.
- INSTRUMENT OPERATOR: ANTONIO SMITH.
- THE NEAREST EXISTING WELL: MAURY O 13-3, 1241' W.

IN ACCORDANCE WITH A REQUEST FROM MIKE RODINE WITH NOBLE ENERGY INC., R&R ENGINEERS-SURVEYORS, INC. HAS DETERMINED THE SURFACE HOLE LOCATION OF THE BERNHARDT 13-12 WELL TO BE 851' FROM THE NORTH LINE AND 1986' FROM THE EAST LINE AS MEASURED AT RIGHT ANGLES FROM THE SECTION LINES OF SECTION 13, TOWNSHIP 4 NORTH, RANGE 67 WEST, AND THE BOTTOM HOLE LOCATION TO BE 2014' FROM THE NORTH LINE AND 1970' FROM THE EAST LINE AS MEASURED AT RIGHT ANGLES FROM THE SECTION LINES OF SECTION 13, TOWNSHIP 4 NORTH, RANGE 67 WEST OF THE 6TH PRINCIPAL MERIDIAN, WELD COUNTY, COLORADO.

I HEREBY CERTIFY THAT THIS WELL LOCATION CERTIFICATE WAS PREPARED BY ME, OR UNDER MY DIRECT SUPERVISION, THAT THE FIELD WORK WAS COMPLETED ON 06/19/2015, FOR AND ON BEHALF OF NOBLE ENERGY INC., THAT IT IS NOT A LAND SURVEY PLAT OR AN IMPROVEMENT SURVEY PLAT, AND THAT IT IS NOT TO BE RELIED UPON FOR ESTABLISHMENT OF FENCES, BUILDINGS, OR OTHER FUTURE IMPROVEMENT LINES.

SURFACE HOLE LOCATION

LATITUDE: N 40.31685°
LONGITUDE: W 104.83683°
PDOP: 1.4
ELEVATION: 4754'
1/4-1/4: NW 1/4 NE 1/4

BOTTOM HOLE LOCATION
LATITUDE: N 40.31366°
LONGITUDE: W 104.83677°

LEGEND

- ⊙ EXISTING WELL
- ⊙ BOTTOM HOLE
- ⊙ FOUND MONUMENT



0 1000'
SCALE: 1" = 1000'



MEASURED FROM THE	BUILDING	BUILDING UNIT	HIGH OCCUPANCY BUILDING UNIT	DESIGNATED OUTSIDE ACTIVITY AREA	PUBLIC ROAD	ABOVE GROUND UTILITY	RAILROAD	PROPERTY LINE
EXISTING WELLHEAD	1230' NE	1203' NE	2330' N	5280'+	840' N (CR 46)	817' N	189' NE	650' W

ANTONIO W. SMITH, PLS 38320
FOR AND ON BEHALF OF R&R
ENGINEERS-SURVEYORS, INC.

DATE: 09/23/2015
JOB #: NE15311