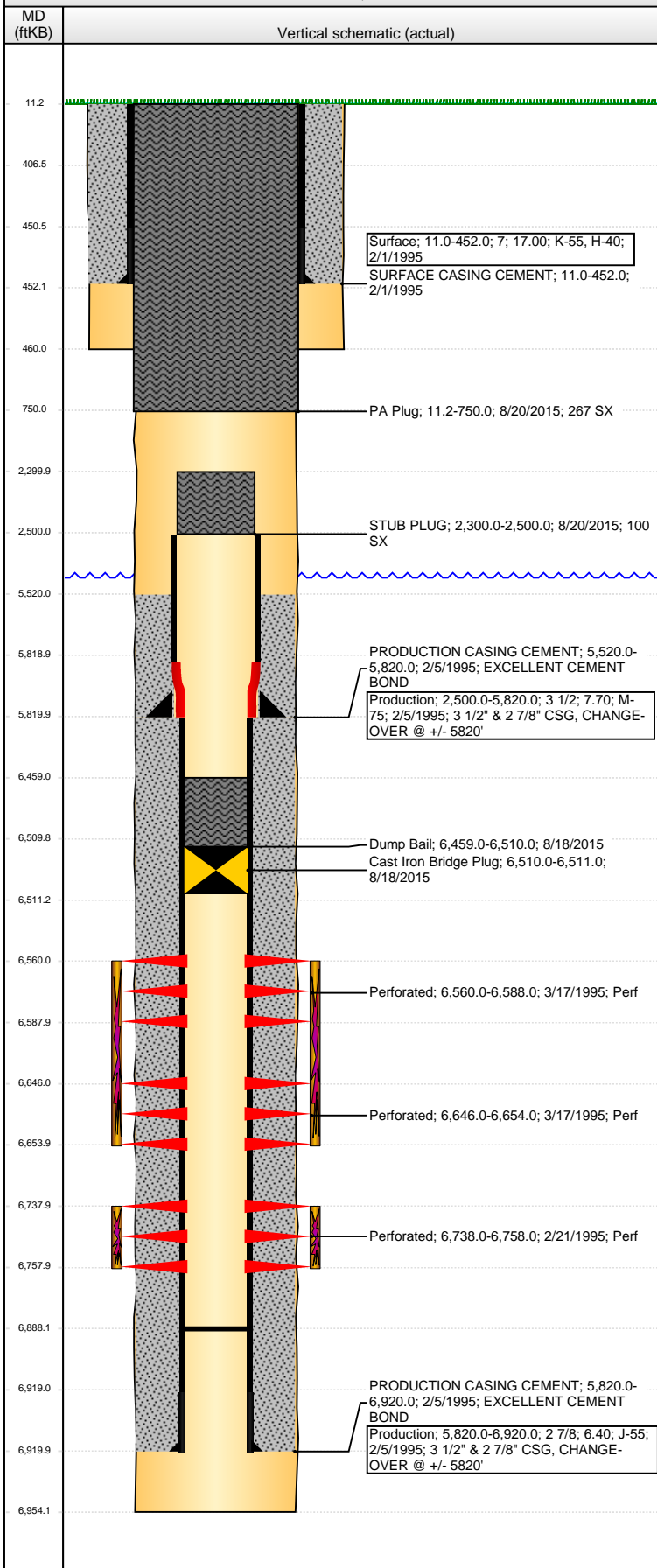


**Well Name: UPV 31-09G3**

VERTICAL - ORIGINAL HOLE, 9/29/2015 9:53:32 AM



## Well Header

API	Business Unit	District	Well Config
05-123-18869	DJ BASIN	15	VERTICAL
Original KB Elevation (ft)	KB - GL / MSL (ftKB)	Spud Date	P & A Date
4,656.00	11.00	2/1/1995	8/18/2015

## Comment

3 1/2" & 2 7/8" CSG, CHANGE-OVER @ +/- 5820'

## Directions To Well

## Congressional Location

Quarter 1	Quarter 2	Quarter 3	Quarter 4	Section	Township	Twnshp N...	Range	Rng E/W Dir
		NE	SE	31	6	N	63	W

## Bottom Hole Location

North-South Distance (ft)	From N or S Line	East-West Distance (ft)	From E or W Line

## Plug Back Total Depths

Date	Depth (ftKB)	Method	Com
2/19/1985	6,787.0	CASED HOLE LOG	DEPTH LOGGER
2/7/1995	6,888.0	LATCH DOWN COLLAR	LATCH DOWN COLLAR

## Wellbore Sections

Section Des	Size (in)	Act Top, MD (ftKB)	Act Btm, MD (ftKB)
SURFACE	9 7/8	11.0	460.0
PRODUCTION	6 1/4	460.0	6,954.0

## Zone Statuses

Zone Name	Status Date	Status	Fluid Type	Job	Prod Method
CODELL	4/28/1995	PR	Gas	DRILLING/CO...	
CODELL	8/18/2015	P&A	Gas	ABANDON WE...	
NIOBRARA	4/28/1995	PR	Gas	DRILLING/CO...	
NIOBRARA	8/18/2015	P&A	Gas	ABANDON WE...	

## Casing Strings

### Surface, 452.0ftKB

Casing Description	Run Date	OD (in)	Wt/Len (l...)	Grade	Top, MD (ft...)	MD (ftKB)
Surface	2/1/1995	7	17.00	H-40	11.0	452.0

### Production, 5,820.0ftKB

Casing Description	Run Date	OD (in)	Wt/Len (l...)	Grade	Top, MD (ft...)	MD (ftKB)
Production	2/5/1995	3 1/2	7.70	M-75	11.0	5,820.0

### Production, 6,920.0ftKB

Casing Description	Run Date	OD (in)	Wt/Len (l...)	Grade	Top, MD (ft...)	MD (ftKB)
Production	2/5/1995	2 7/8	6.40	J-55	5,820.0	6,920.0

## Cement

Description	Top Depth (ftKB)	Bottom Depth (ftKB)
SURFACE CASING CEMENT	11.0	452.0
PRODUCTION CASING CEMENT	5,520.0	5,820.0
PRODUCTION CASING CEMENT	5,820.0	6,920.0
Dump Bail	6,459.0	6,510.0
STUB PLUG	2,300.0	2,500.0
PA Plug	11.2	750.0

## Tubing Strings

Tubing Description	Run Date	String...	ID (in)	Wt (lb/ft)	Grade	Len (ft)	Set De...
Tubing - Production	4/26/1995	2 1/16	1.751	3.25	J-55	6,503.00	
Tubing - Production	5/30/2012	2 1/16	1.751	3.25	J-55	6,538.40	

## Perforation Data

Zone	Brnh/St g	Entered Shot Total	Top (ftKB)	Btm (ftKB)	Date
NIOBRARA, ORIGINAL HOLE	B	56	6,560.00	6,588.00	3/17/1995
NIOBRARA, ORIGINAL HOLE	C	18	6,646.00	6,654.00	3/17/1995
CODELL, ORIGINAL HOLE		40	6,738.00	6,758.00	2/21/1995

**Well Name: UPV 31-09G3**

VERTICAL - ORIGINAL HOLE, 9/29/2015 9:53:35 AM

## Stimulations & Treatments

Date 3/8/1995	Zone CODELL, ORIGINAL HOLE	Primary Job Type DRILLING/COMPLETION - ORIGINAL
Technical Result	Tech Result Details	Tech Result Note

Comment  
NO FRAC DATA

Date 3/23/1995	Zone NIOBRARA, ORIGINAL HOLE	Primary Job Type DRILLING/COMPLETION - ORIGINAL
Technical Result	Tech Result Details	Tech Result Note

Comment

## Other In Hole

Run Date	Des	OD (in)	Top (ftKB)	Btm (ftKB)
8/18/2015	Cast Iron Bridge Plug	2 1/2	6,510.0	6,511.0

## Logs

Date	Type	Top, MD (ftKB)	Btm, MD (ftKB)
2/5/1995	COMPENSATED DENSITY	2,550.0	6,894.0
2/5/1995	INDUCTION	450.0	6,919.0
2/19/1995	CBL/CCL/GR	5,300.0	6,787.0
3/18/2014	GYRO	11.0	6,450.0
8/18/2015	CBL/CCL/GR	11.0	2,530.0

