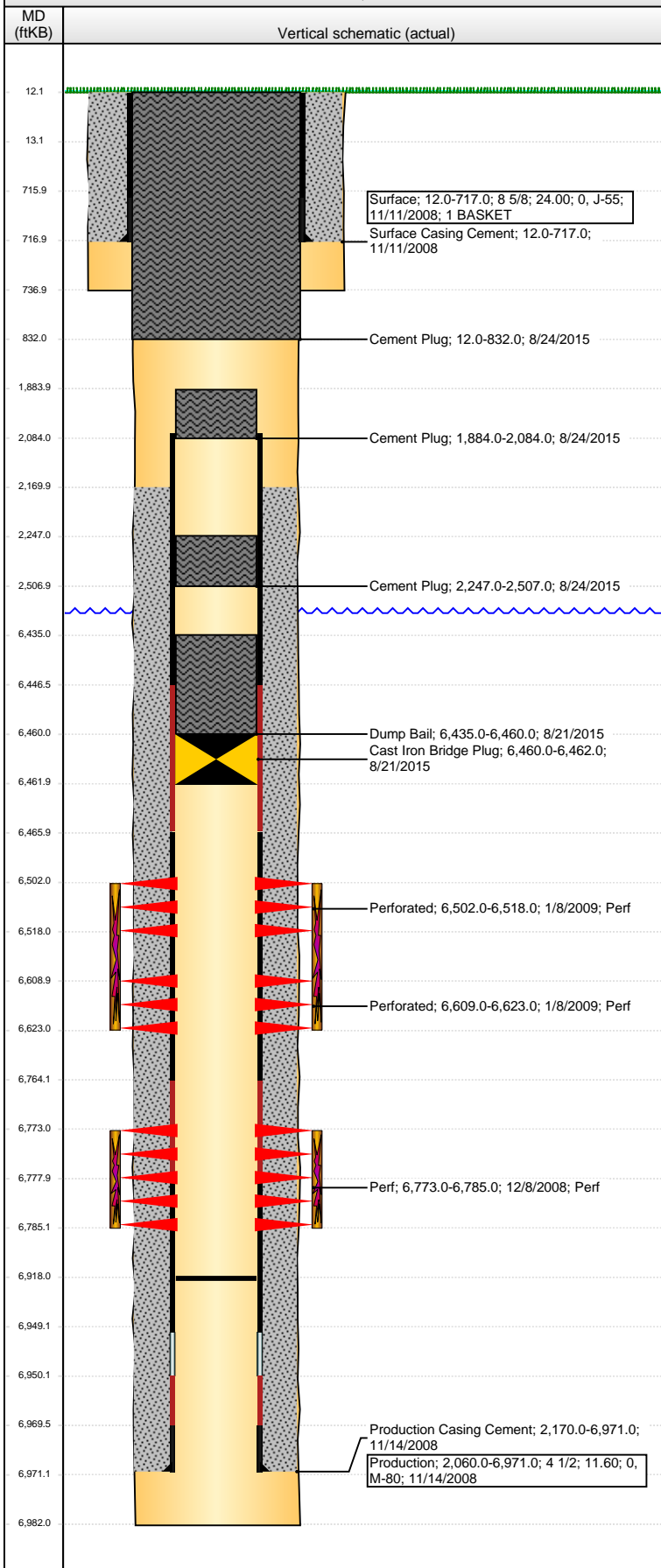


Well Name: WELLS RANCH USX AA31-01

VERTICAL - ORIGINAL HOLE, 9/21/2015 4:44:55 PM



Well Header

API 05-123-27187	Business Unit DJ BASIN	District 15	Well Config VERTICAL
Original KB Elevation (ft) 4,670.00	KB - GL / MSL (ftKB) 12.00	Spud Date 11/10/2008	P & A Date 8/24/2015

Comment

Directions To Well

WELLS RANCH USX AA31-01: WCR 67 & 68, E .2, S 2.5, NW .5, W 2.25 PAST DAIRY, SOUTH INTO LOCATION.

Congressional Location

Quarter 1	Quarter 2	Quarter 3	Quarter 4	Section	Township	Twnshp N...	Range	Rng E/W Dir
		NE	NE	31	6	N	63	W

Bottom Hole Location

North-South Distance (ft)	From N or S Line	East-West Distance (ft)	From E or W Line
---------------------------	------------------	-------------------------	------------------

Plug Back Total Depths

Date	Depth (ftKB)	Method	Com
11/14/2008	6,949.0	CASING TALLY	
2/25/2009	6,918.0	TUBING TALLY	DRILL CIFT P W/ CUTRITE BIT AND CHASE DOW...

Wellbore Sections

Section Des	Size (in)	Act Top, MD (ftKB)	Act Btm, MD (ftKB)
SURFACE	12 1/4	12.0	737.0
PRODUCTION	7 7/8	737.0	6,982.0

Zone Statuses

Zone Name	Status Date	Status	Fluid Type	Job	Prod Method
CODELL	1/10/2009	PR		DRILLING/CO...	
CODELL	8/21/2015	P&A		ABANDON WE...	
NIOBRARA	1/10/2009	PR		DRILLING/CO...	
NIOBRARA	8/21/2015	P&A		ABANDON WE...	

Casing Strings

Surface, 717.0ftKB

Casing Description	Run Date	OD (in)	Wt/Len (l...)	Grade	Top, MD (ft...)	MD (ftKB)
Surface	11/11/2008	8 5/8	24.00	J-55	12.0	717.0

Production, 6,971.0ftKB

Casing Description	Run Date	OD (in)	Wt/Len (l...)	Grade	Top, MD (ft...)	MD (ftKB)
Production	11/14/2008	4 1/2	11.60	M-80	12.1	6,971.0

Cement

Description	Top Depth (ftKB)	Bottom Depth (ftKB)
Surface Casing Cement	12.0	717.0
Production Casing Cement	2,170.0	6,971.0
Dump Bail	6,435.0	6,460.0
Cement Plug	2,247.0	2,507.0
Cement Plug	1,884.0	2,084.0
Cement Plug	12.0	832.0

Tubing Strings

Tubing Description	Run Date	String...	ID (in)	Wt (lb/ft)	Grade	Len (ft)	Set De...
Tubing - Production	2/25/2009	2 3/8	1.995	4.70	J-55	6,746.75	6,750.5

Perforation Data

Zone	Bnch/St g	Entered Shot Total	Top (ftKB)	Btm (ftKB)	Date
NIOBRARA, ORIGINAL HOLE	A	32	6,502.00	6,518.00	1/8/2009
NIOBRARA, ORIGINAL HOLE	B	28	6,609.00	6,623.00	1/8/2009
CODELL, ORIGINAL HOLE		48	6,773.00	6,785.00	12/8/2008

Stimulations & Treatments

Date	Zone	Primary Job Type
1/8/2009	CODELL, ORIGINAL HOLE	DRILLING/COMPLETION - ORIGINAL

Technical Result	Tech Result Details	Tech Result Note
Success	According to Plan	

Comment

(CODELL): TREATMENT WENT WELL HAD SOME ISSUES WITH THE BA-40 RATE RUNNING ERATIC AVG VISC 28.8 CPS AVG TEMP 65.5F AVG PH 10.16 POST JOB 5 MINUTE OF 3327 PSI

Well Name: WELLS RANCH USX AA31-01

VERTICAL - ORIGINAL HOLE, 9/21/2015 4:44:58 PM

Stimulations & Treatments

Date	Zone	Primary Job Type
1/8/2009	NIOBRARA, ORIGINAL HOLE	DRILLING/COMPLETION - ORIGINAL
Technical Result	Tech Result Details	Tech Result Note
Success	According to Plan	

Comment
(NIOBRARA): TREATMENT WENT WELL NO ISSUES TO REPORT AVG VISC 23.7 CPS AVG TEMP 64.1F AVG PH 10.23 POST JOB 5 MINUTE OF 3204 PSI

Other In Hole

Run Date	Des	OD (in)	Top (ftKB)	Btm (ftKB)
8/21/2015	Cast Iron Bridge Plug	3.99	6,460.0	6,462.0

Logs

Date	Type	Top, MD (ftKB)	Btm, MD (ftKB)
11/14/2008	Caliper/Comp. Density/Neutron/GR/SP/ML	2,590.0	6,983.0
11/14/2008	DIL/GR/SP/Caliper	717.0	6,983.0
12/8/2008	CBL/CCL/GR	2,080.0	6,942.0
5/2/2014	GYRO	10.0	6,650.0

