

0 500 1000 2000

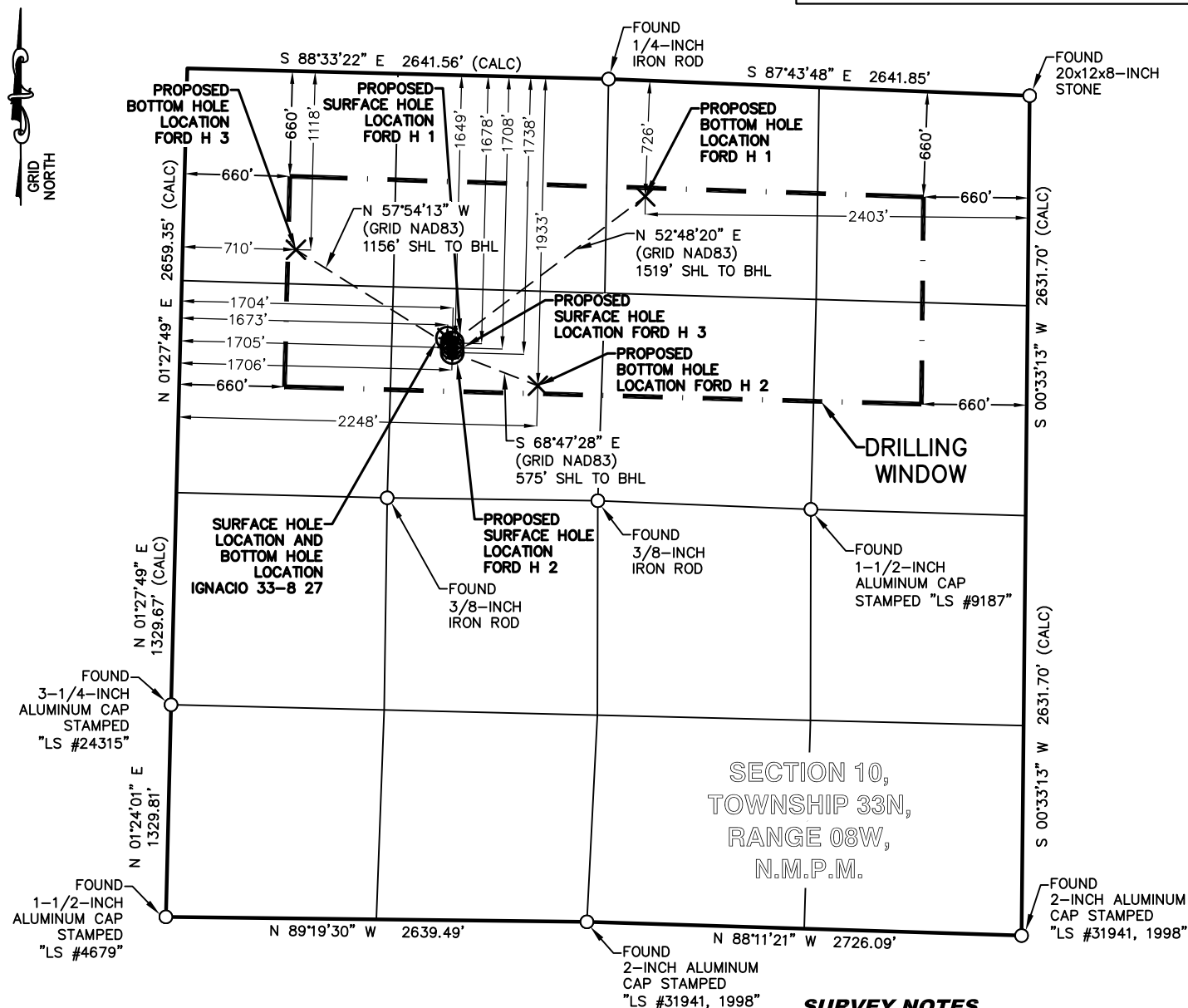
GRAPHIC SCALE IN FEET

LEGEND

FOUND MONUMENT ○

PROPOSED SURFACE HOLE LOCATION *

PROPOSED BOTTOM HOLE LOCATION x

**SURVEY NOTES**

FORD H 1	CSZ NAD'83	NAD'83	TIES	ELEVATION
PROPOSED SURFACE HOLE LOCATION (SHL)	N (Y) = 1,173,140.32' E (X) = 2,356,283.14'	LAT. = 37.12127275°N LON. = 107.70793252°W	FNL = 1678' FWL = 1704'	EXISTING GROUND 6702.16'
PROPOSED BOTTOM HOLE LOCATION (BHL)	N (Y) = 1,174,058.73' E (X) = 2,357,493.34'	LAT. = 37.12387284°N LON. = 107.70385742°W	FNL = 726' FEL = 2403'	PROPOSED GRADE 6702.32'
FORD H 2	CSZ NAD'83	NAD'83	TIES	ELEVATION
PROPOSED SURFACE HOLE LOCATION (SHL)	N (Y) = 1,173,080.32' E (X) = 2,356,283.43'	LAT. = 37.12110803°N LON. = 107.70792666°W	FNL = 1738' FWL = 1706'	EXISTING GROUND 6701.27'
PROPOSED BOTTOM HOLE LOCATION (BHL)	N (Y) = 1,172,872.15' E (X) = 2,356,819.87'	LAT. = 37.12057128°N LON. = 107.70607052°W	FNL = 1933' FWL = 2248'	PROPOSED GRADE 6702.32'
FORD H 3	CSZ NAD'83	NAD'83	TIES	ELEVATION
PROPOSED SURFACE HOLE LOCATION (SHL)	N (Y) = 1,173,110.32' E (X) = 2,356,283.29'	LAT. = 37.12119039°N LON. = 107.70792957°W	FNL = 1708' FWL = 1705'	EXISTING GROUND 6702.08'
PROPOSED BOTTOM HOLE LOCATION (BHL)	N (Y) = 1,173,724.78' E (X) = 2,355,303.62'	LAT. = 37.12281382°N LON. = 107.71133844°W	FNL = 1118' FWL = 710'	PROPOSED GRADE 6702.32'
IGNACIO 33-7 27	CSZ NAD'83	NAD'83	TIES	ELEVATION
SURFACE HOLE LOCATION (SHL)	N (Y) = 1,173,170.18' E (X) = 2,356,252.99'	LAT. = 37.12135278°N LON. = 107.70803832°W	FNL = 1649' FWL = 1673'	EXISTING GROUND 6702.32'
BOTTOM HOLE LOCATION (BHL)	N (Y) = 1,173,170.18' E (X) = 2,356,252.99'	LAT. = 37.12135278°N LON. = 107.70803832°W	FNL = 1649' FWL = 1673'	PROPOSED GRADE 6702.32'

1. BEARING BASIS FOR THIS SURVEY IS BASED ON THE NORTH AMERICAN DATUM OF 1983, COLORADO STATE PLANE COORDINATE SYSTEM, COLORADO SOUTH, ZONE 0503.
2. ELEVATION BASIS FOR THIS SURVEY IS BASED ON THE NORTH AMERICAN VERTICAL DATUM OF 1988 (GEOID12A).
3. SURVEYED IN THE FIELD ON 07/27/2015
4. BEARINGS AND DISTANCE SHOWN ARE MEASURED IN THE FIELD UNLESS OTHERWISE NOTED.
5. ALL MEASURED DISTANCES SHOWN ARE GRID USING A COMBINED SCALE FACTOR 0.99970543.
6. GPS INSTRUMENT OPERATOR: BRIAN BONIFACE
7. GPS PDOP VALUE: 1.8/1.8/1.8

BP AMERICA
PRODUCTION COMPANY
US LOWER 48 ONSHORE**MULTI-WELL PLAN****FORD H 1, FORD H 2 AND FORD H 3**PART OF
SECTION 10, TOWNSHIP 33N, RANGE 08W,
N.M.P.M.
LA PLATA COUNTY, COLORADODRAWN BY
CFWCHECKED BY
RLMSCALE
1"=1000'DATE
08/14/2015SHEET
1 OF 1

REVISION