

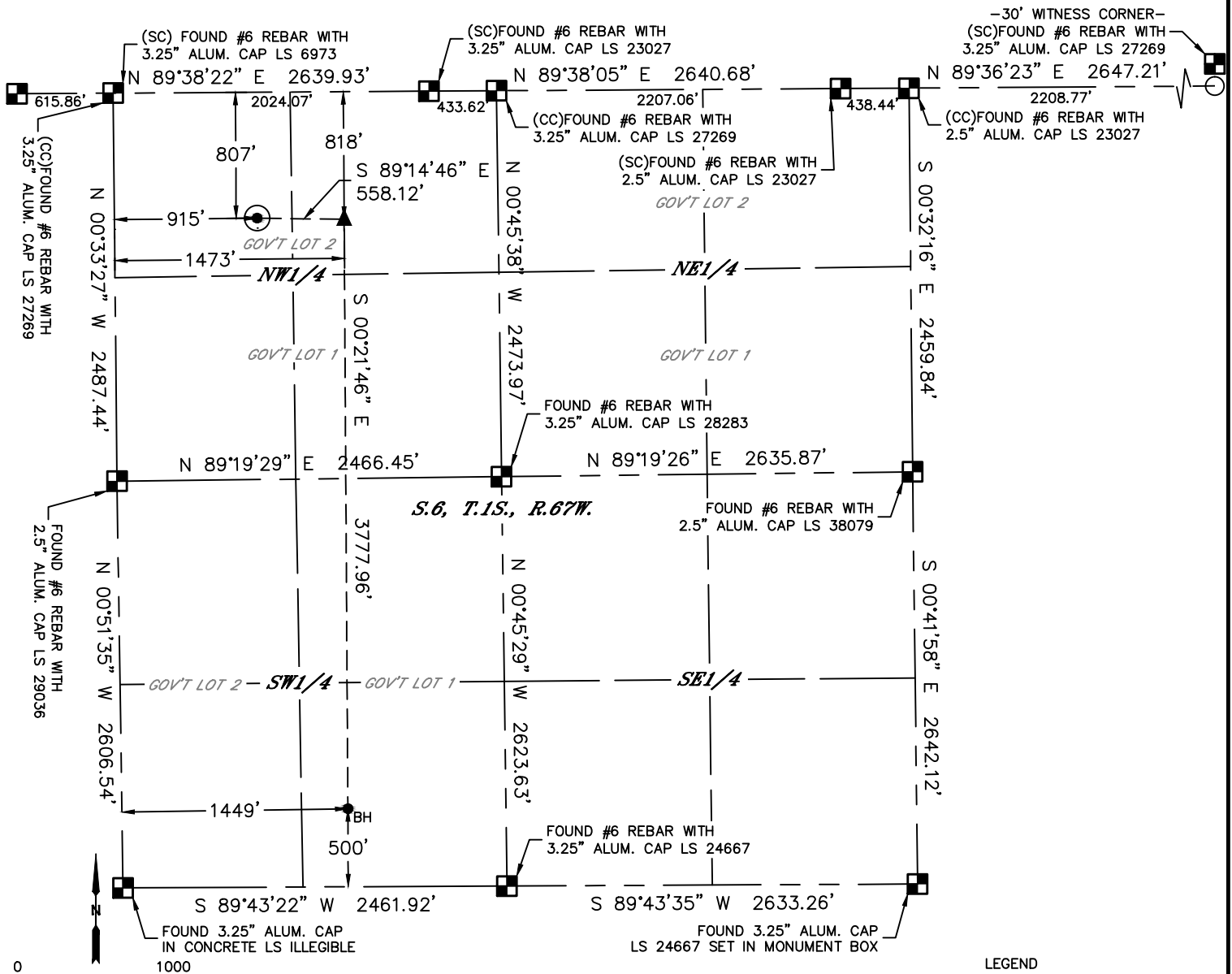


Lat40°, Inc. 6250 W. 10th Street, Unit 2, Greeley, CO 970-515-5294

WELL LOCATION CERTIFICATE

CORCILIOUS 6J-303

SECTION: 6
TOWNSHIP: 1S
RANGE: 67W
6TH. P.M.
ADAMS COUNTY, CO



LEGEND

- = ALIQUOT MONUMENT AS DESCRIBED
- = CALCULATED POSITION
- = SURFACE HOLE LOCATION (SHL)
- ▲ = ENTRY POINT LOCATION (EP)
- _{BH} = BOTTOM HOLE LOCATION (BHL)
- ⊙ = EXISTING WELL
- ⊙ = ABANDONED WELL

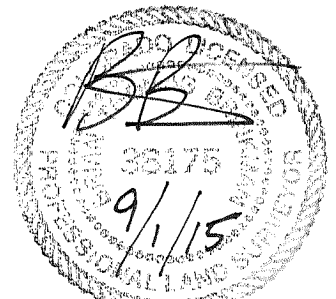
CLIENT: PDC ENERGY, LLC						LANDMAN: BARNEY HAMMOND			
INSTRUMENT OPERATOR: BRIAN ROTTINGHAUS						SURVEY DATE: 12/29/2014		SURFACE USE: PASTURE	
SHL FOOTAGE				SHL LAT°	SHL LONG°	SHL PDOP	SHL ELEV (FT.)	SHL 1/4/1/4	SHL S-T-R
807	FNL	915	FWL	39.99813	-104.93706	1.3	5059	NWNW	6-1-67

BHL FOOTAGE				BHL LAT °	BHL LONG °	BHL S-T-R	EP LAT °	EP LONG °	EP S-T-R
500	FSL	1449	FWL	39.98773	-104.93507	6-1-67	39.99810	-104.93507	6-1-67

NOTE:

- Bearings shown are Grid Bearings of the Colorado State Plane Coordinate System, North Zone, North American Datum 1983. The lineal dimensions as contained herein are based upon the "U.S. Survey Foot."
- Distances to section lines measured at 90 degrees from said section lines.
- Ground elevations are based on an observed GPS elevation (NAVD 1988 DATUM).
- Latitude and Longitude shown are (NAD 83 DATUM).
- IMPROVEMENTS: See LOCATION DRAWING for all visible improvements within 500' of oil and gas location.
- This map does not represent a boundary survey.

NEAREST CULTURAL ITEMS	
BUILDING	±362' NW
BUILDING UNIT	±576' NW
HIGH OCCUPANCY BUILDING UNIT	5280'+
DESIGNATED OUTSIDE ACTIVITY AREA	5280'+
PUBLIC ROAD (CR 2)	±794' N
ABOVE GROUND UTILITY	±482' NW
RAILROAD	±1281' SW
PROPERTY LINE	±40' E



Brian T. Brinkman—On behalf of Lat40°, Inc.
Colorado Licensed Professional Land Surveyor No. 38175
DATE: 09/01/2015
PROJECT#: 2014158

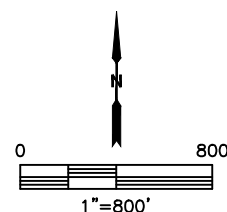
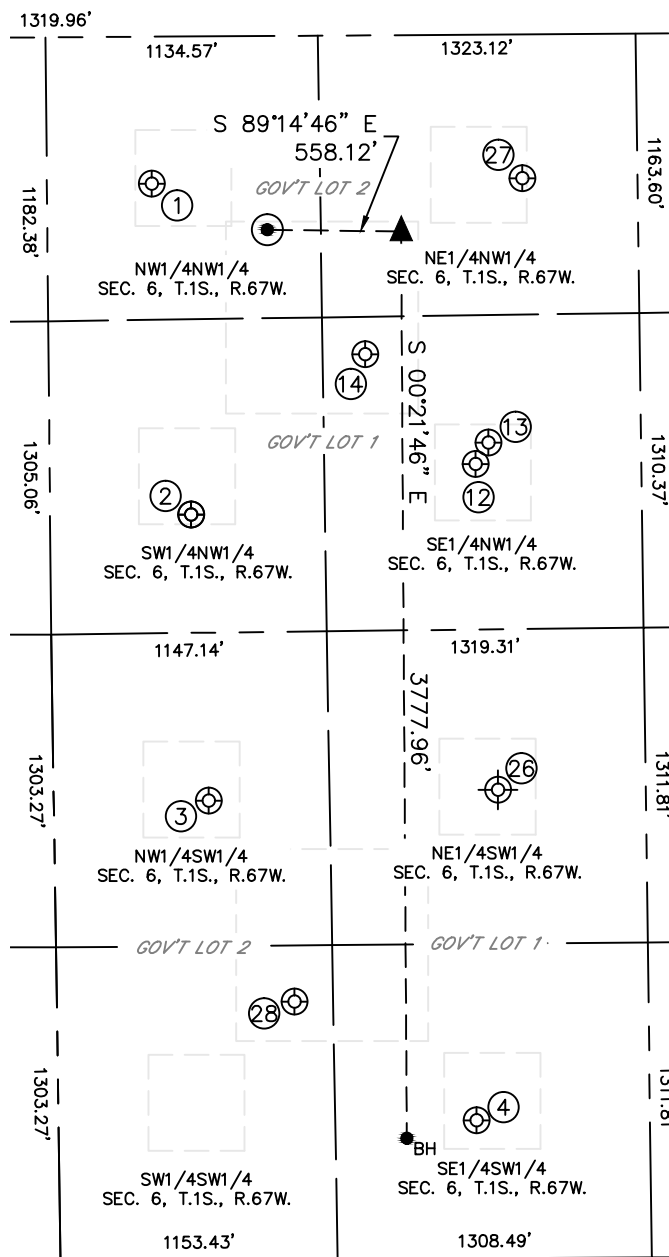


Lat40°, Inc. 6250 W. 10th Street, Unit 2, Greeley, CO 970-515-5294

SITE SKETCH

CORCILIOUS 6J-303

SECTION: 6
TOWNSHIP: 1S
RANGE: 67W
6TH. P.M.
ADAMS COUNTY, CO



WELL NO.	WELL NAME	SHL FOOTAGE				SHL LAT°	SHL LONG°	PDOP	ELEV (FT.)	1/4/1/4
1	SACK 11-6	612	FNL	437	FWL	39.99866	-104.93877	2.8	5067	NWNW
2	SACK 12-6	1992	FNL	586	FWL	39.99487	-104.93822	2.7	5054	SWNW
3	BREDEHOFT 13-6	1912	FSL	645	FWL	39.99160	-104.93799	2.7	5084	NWSW
4	BREDEHOFT NO. 1	574	FSL	1741	FWL	39.98793	-104.93403	2.8	5116	SESW
12	SACK 23-6	1788	FNL	1773	FWL	39.99543	-104.93399	2.3	5060	SENW
13	SACK, CASPER J 1	1700	FNL	1827	FWL	39.99567	-104.93380	3.2	5059	SENW
14	SACK 22-6	1328	FNL	1319	FWL	39.99670	-104.93562	2.8	5053	SENW
26	BREDEHOFT 1	1950	FSL	1850	FWL	39.99169	-104.93361	N/A	5088	NESW
27	CORCILIOUS 1	660	FNL	1980	FWL	39.99861	-104.93325	N/A	5044	NENW
28	VEAL 14-6(1)	1072	FSL	990	FWL	39.98931	-104.93672	N/A	5098	SWSW

NOTE: THE EXISTING AND ABANDONED WELL DATA SHOWN IN RED ABOVE WAS OBTAINED FROM COGCC SCOUT CARDS. DATE: 09/01/2015
PROJECT#: 2014158