

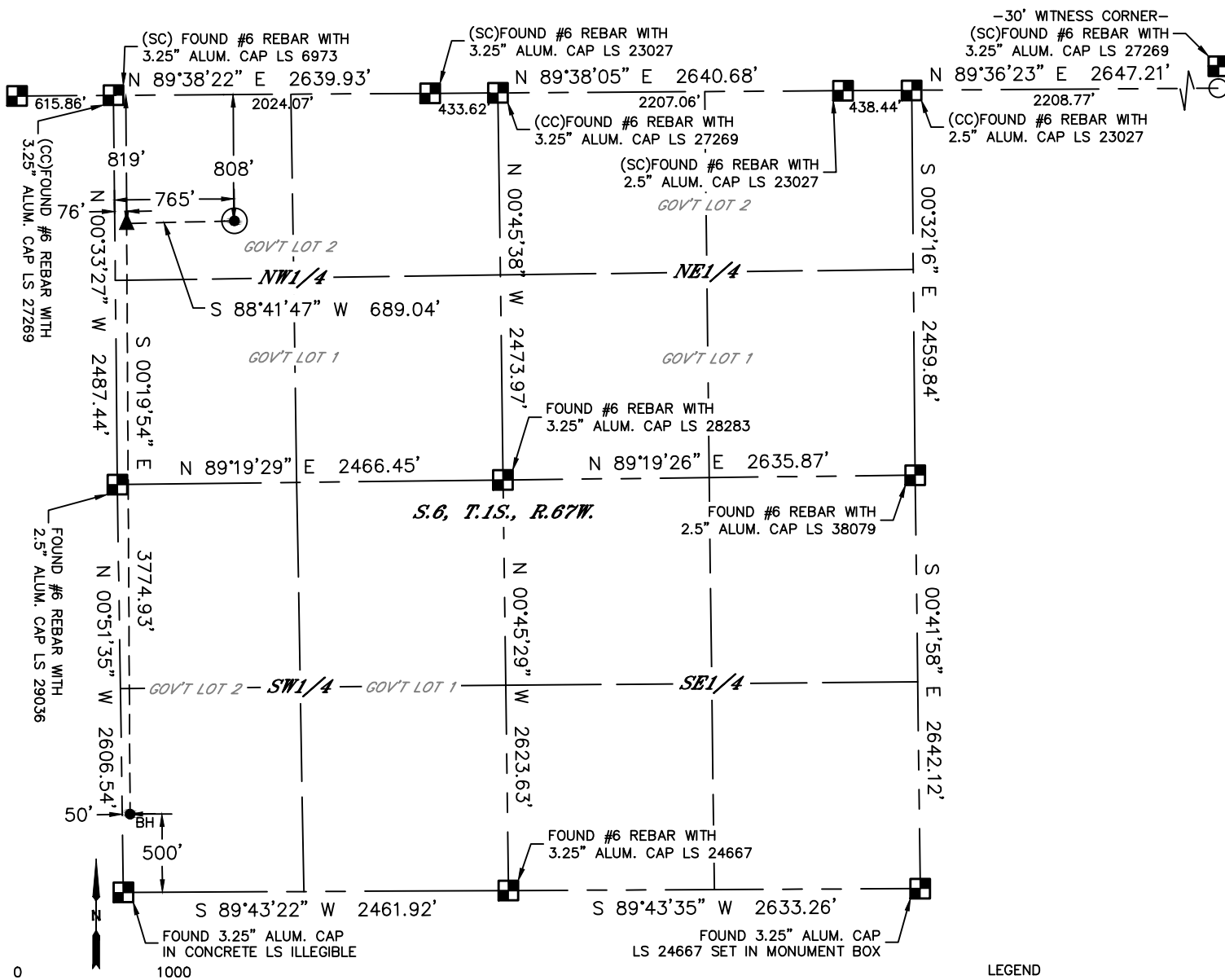


Lat40°, Inc. 6250 W. 10th Street, Unit 2, Greeley, CO 970-515-5294

# WELL LOCATION CERTIFICATE

CORCILIOUS 6E-203

SECTION: 6  
TOWNSHIP: 1S  
RANGE: 67W  
6TH. P.M.  
ADAMS COUNTY, CO



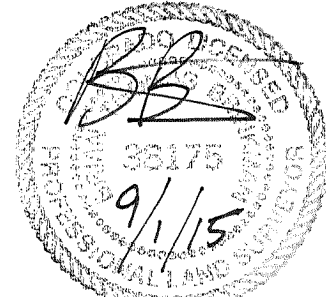
CLIENT: PDC ENERGY, LLC				LANDMAN: BARNEY HAMMOND			
INSTRUMENT OPERATOR: BRIAN ROTTINGHAUS				SURVEY DATE: 12/29/2014		SURFACE USE: PASTURE	
SHL FOOTAGE	SHL LAT°	SHL LONG°	SHL PDOP	SHL ELEV (FT.)	SHL 1/4/1/4	SHL S-T-R	
808	FNL	765	FWL	39.99812	-104.93760	1.8	5061
				NWNW		6-1-67	

BHL FOOTAGE	BHL LAT°	BHL LONG°	BHL S-T-R	EP LAT°	EP LONG°	EP S-T-R
500	FSL	50	FWL	39.98773	-104.94006	6-1-67
				39.99809	-104.94006	6-1-67

NEAREST CULTURAL ITEMS	
BUILDING	±352' N
BUILDING UNIT	±573' NW
HIGH OCCUPANCY BUILDING UNIT	5280'±
DESIGNATED OUTSIDE ACTIVITY AREA	5280'±
PUBLIC ROAD (CR 2)	±795' N
ABOVE GROUND UTILITY	±494' NE
RAILROAD	±1131' SW
PROPERTY LINE	±185' W

NOTE:  
1) Bearings shown are Grid Bearings of the Colorado State Plane Coordinate System, North Zone, North American Datum 1983. The lineal dimensions as contained herein are based upon the "U.S. Survey Foot."  
2) Distances to section lines measured at 90 degrees from said section lines.  
3) Ground elevations are based on an observed GPS elevation (NAVD 1988 DATUM).  
4) Latitude and Longitude shown are (NAD 83 DATUM).  
5) IMPROVEMENTS: See LOCATION DRAWING for all visible improvements within 500' of oil and gas location.  
6) This map does not represent a boundary survey.

- LEGEND
- = ALIQUOT MONUMENT AS DESCRIBED
  - = CALCULATED POSITION
  - = SURFACE HOLE LOCATION (SHL)
  - ▲ = ENTRY POINT LOCATION (EP)
  - BH = BOTTOM HOLE LOCATION (BHL)
  - ⊙ = EXISTING WELL
  - ⊙ = ABANDONED WELL



Brian T. Brinkman—On behalf of Lat40°, Inc.  
Colorado Licensed Professional Land Surveyor No. 38175  
DATE: 09/01/2015  
PROJECT#: 2014158

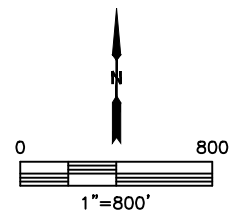
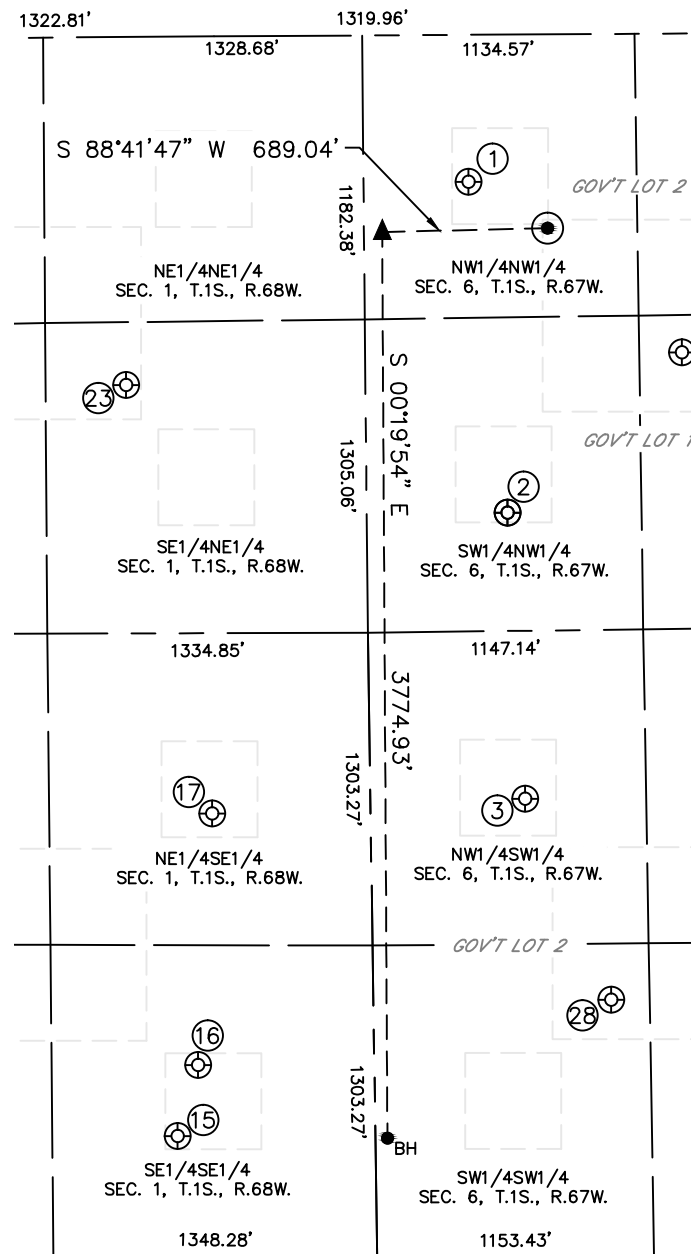


Lat40°, Inc. 6250 W. 10th Street, Unit 2, Greeley, CO 970-515-5294

# SITE SKETCH

CORCILIOUS 6E-203

SECTION: 6  
TOWNSHIP: 1S  
RANGE: 67W  
6TH. P.M.  
ADAMS COUNTY, CO



WELL NO.	WELL NAME	SHL FOOTAGE				SHL LAT°	SHL LONG°	PDOP	ELEV (FT.)	1/4/1/4
1	SACK 11-6	612	FNL	437	FWL	39.99866	-104.93877	2.8	5067	NWNW
2	SACK 12-6	1992	FNL	586	FWL	39.99487	-104.93822	2.7	5054	SWNW
3	BREDEHOFT 13-6	1912	FSL	645	FWL	39.99160	-104.93799	2.7	5084	NWSW
15	MORRISON 16-1	503	FSL	825	FEL	39.98777	-104.94319	4.3	5073	SESE
16	MORRISON INVESTMENT CO 2	799	FSL	735	FEL	39.98858	-104.94287	3.6	5074	SESE
17	MORRISON 9-1	1847	FSL	660	FEL	39.99146	-104.94264	3.4	5064	NESE
23	BEISEL 42-1	1450	FNL	998	FEL	39.99636	-104.94388	2.4	5071	SENE
28	VEAL 14-6(1)	1072	FSL	990	FWL	39.98931	-104.93672	N/A	5098	SWSW

NOTE: THE EXISTING AND ABANDONED WELL DATA SHOWN IN RED ABOVE WAS OBTAINED FROM COGCC SCOUT CARDS.

DATE: 09/01/2015  
PROJECT#: 2014158