



Kerr-McGee Oil & Gas Onshore LP  
1099 18<sup>th</sup> Street, Suite 1800  
Denver, Colorado 80202  
720-929-6000 Fax 720-929-7000

September 19, 2014

Mr. Chris Canfield  
Environmental Protection Specialist  
Colorado Oil and Gas Conservation Commission  
1120 Lincoln Street, Suite 801  
Denver, Colorado 80203

**Re: No Further Action Status Request  
Gabel Adam GU #1, Sutton Founders #1 Tank Battery  
COGCC Remediation No. 4271  
SWNE 8-T1N-R66W**

Dear Mr. Canfield:

Kerr-McGee Oil and Gas Onshore LP (Kerr-McGee) is submitting this letter report as an update to the Form 27, submitted on June 26, 2008, for the Gabel Adam GU #1, Sutton Founders #1 tank battery. We are requesting a No Further Action (NFA) status for this site.

On March 14, 2008, dropping water levels led to the discovery of a leak in the produced water sump. The wells were shut in and the petroleum hydrocarbon impacted soil was excavated. Additionally, field crews encountered soil with historical petroleum hydrocarbon impacts near the separator while replacing the dumphines. The soil with historical petroleum hydrocarbon impacts at the separator location was also excavated. Approximately 1,250 cubic yards of petroleum hydrocarbon impacted soil were removed from the combined excavations and transported to Kerr-McGee's land treatment facility in Weld County, Colorado. Kerr-McGee contracted LT Environmental, Inc. (LTE) to oversee excavation activities, collect confirmation soil and groundwater samples from the source area excavations, install groundwater monitoring wells, perform quarterly groundwater monitoring, and interpret the laboratory analytical results.

Confirmation soil samples were collected from the sidewalls of the tank battery and separator excavations and submitted for total extractable petroleum hydrocarbon (TEPH) analysis by Environmental Protection Agency (EPA) Method 8015 (full carbon chain). The analytical results confirmed that TPH concentrations were below the Colorado Oil and Gas Conservation Commission (COGCC) sensitive area allowable level of 1,000 milligrams per kilogram (mg/kg) at the extent of both excavations. The sensitive area allowable level was the applicable standard prior to April 1, 2009. However, the TPH concentrations in the confirmation soil samples (final excavation extent) were also below the current allowable level for TPH of 500 mg/kg.

Groundwater was encountered in the excavations at approximately 4 feet below ground surface. Groundwater sample GW01 was collected from the tank battery excavation and groundwater sample GW02 was collected from the separator excavation. The groundwater samples were submitted for BTEX analysis by EPA Method 8260B. The benzene concentration in the GW01 groundwater sample exceeded the Colorado Groundwater Quality Standard (CGWQS) of 5.0 micrograms per liter ( $\mu\text{g/L}$ ) at a concentration of 130  $\mu\text{g/L}$ . BTEX concentrations in the GW02 groundwater sample were below the CGWQS. Ten gallons of MicroBlaze<sup>®</sup> microbial solution were applied to the groundwater and exposed smear zone in the tank battery excavation prior to backfilling. The excavation areas were restored to their pre-release grade and Kerr-McGee's production facility remains at the site.

In order to assess the extent and magnitude of the residual dissolved phase groundwater impacts down-gradient of the tank battery excavation, four monitoring wells (MW01 through MW04) were installed at the site in April 2008. During the initial quarterly groundwater monitoring event conducted on May 19, 2008, the benzene concentration exceeded the CGWQS in monitoring well MW03. Based on the May 2008 groundwater analytical results, three additional monitoring wells (MW05 through MW07) were installed at the site in August 2008. The benzene concentration exceeded the CGWQS in monitoring well MW07 during the August 29, 2008 monitoring event. Based on the August 2008 groundwater analytical results, three additional monitoring wells (MW08 through MW10) were installed at the site. BTEX concentrations were below the CGWQS in monitoring wells MW08 through MW10 during the November 21, 2008 monitoring event. Based on the November 2008 groundwater analytical results, monitoring wells MW01, MW02, MW05, MW06, MW08, MW09, and MW10 were designated as point of compliance wells. Groundwater monitoring continued on a quarterly basis. A Site Map showing the general site layout, excavation outline, and monitoring well locations is provided as Figure 1.

With COGCC approval, monitoring wells MW01 and MW02 were removed from the monitoring program in August 2010 (then subsequently destroyed) and monitoring wells MW09 and MW10 were removed from the monitoring program in August 2013.

On November 25, 2013, the groundwater monitoring wells were surveyed to determine the groundwater flow direction at the site. The survey confirmed the groundwater flow direction is to the northwest. The relative groundwater elevations are provided in Table 1. A groundwater elevation contour map is provided as Figure 2.

As of the February 2014 quarterly monitoring event, BTEX concentrations in all of the site monitoring wells have remained below the CGWQS for four or more consecutive quarterly monitoring events. The groundwater analytical results are summarized in Table 1 and the laboratory analytical reports are attached.

Remedial activities employed at the site included excavation of the source area and application of the MicroBlaze<sup>®</sup> groundwater amendment. Based on these remedial actions and groundwater

analytical results showing BTEX concentrations below the CGWQS for four consecutive quarterly monitoring events, Kerr-McGee is requesting NFA status for this site.

Feel free to contact me at 970-515-1161 if you have any questions regarding this information.

Sincerely,

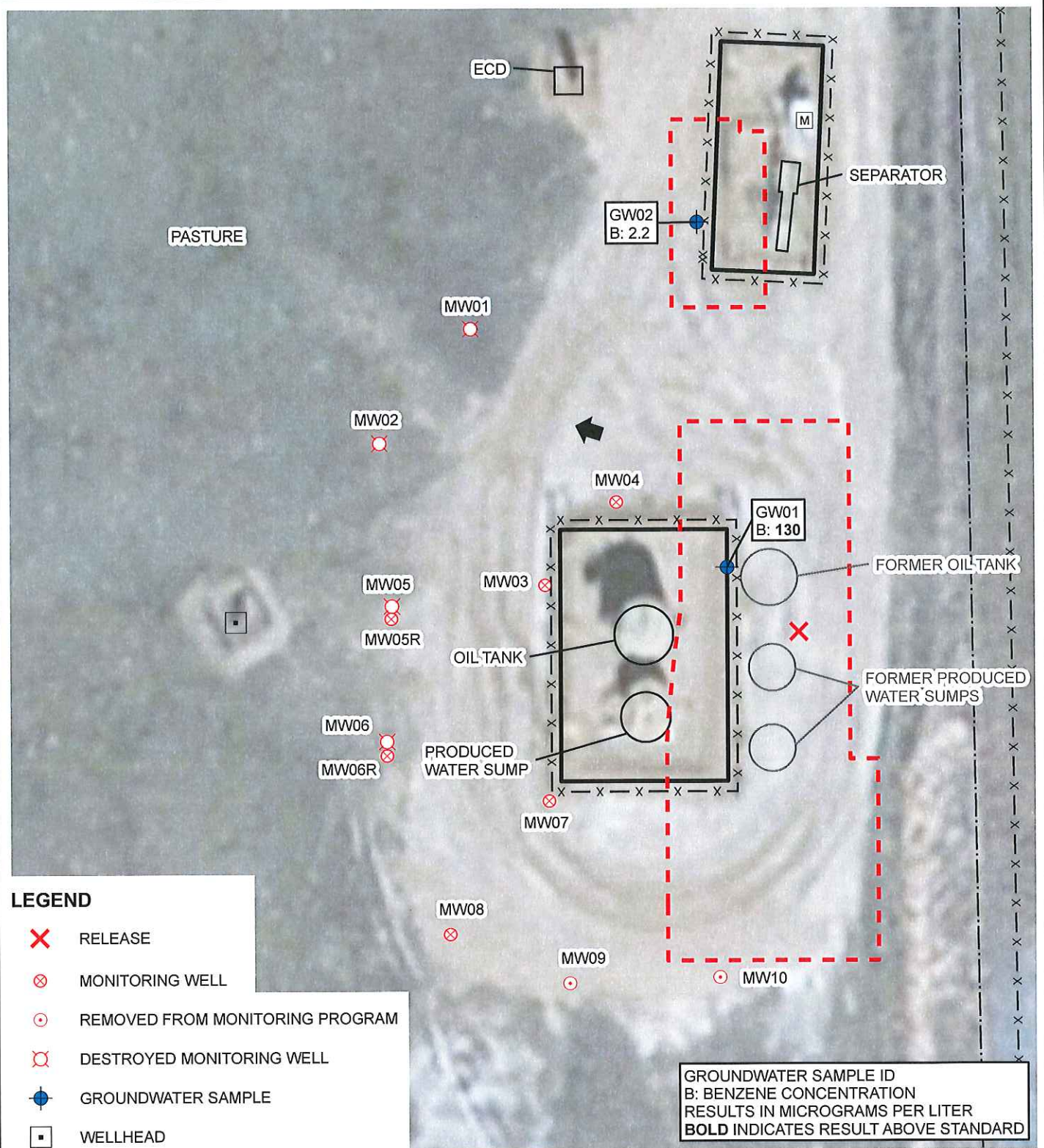
Kerr-McGee Oil & Gas Onshore LP

A handwritten signature in black ink, appearing to read 'P. Hamlin', is written over the printed name.

Phillip Hamlin  
Senior HSE Representative

Attachments





**FIGURE 1**  
**SITE MAP**  
 GABEL ADAM GU #1/SUTTON FOUNDERS #1  
 SWNE SEC 8-T1N-R66W  
 WELD COUNTY, COLORADO  
 KERR-MCGEE OIL & GAS ONSHORE LP





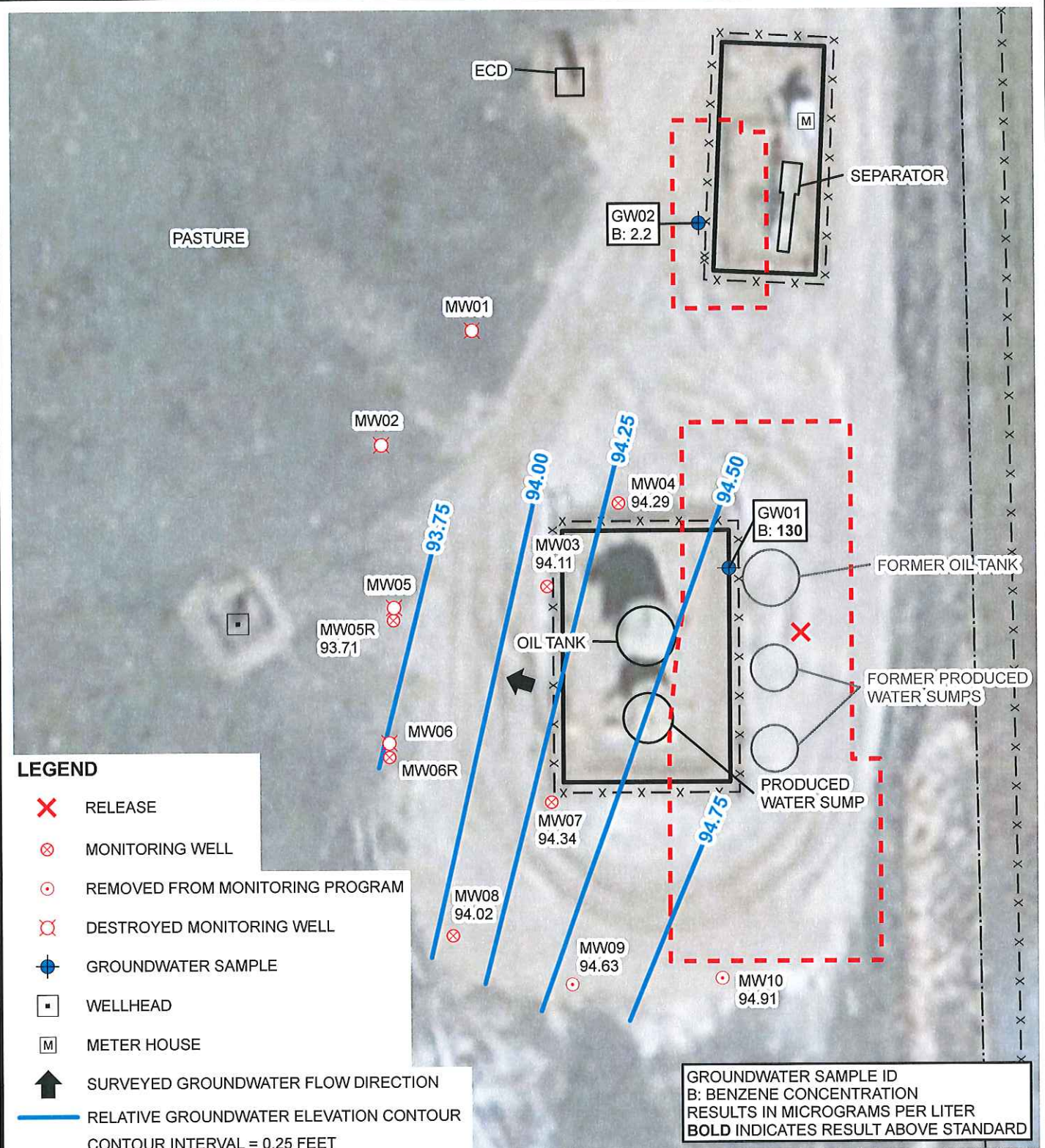


FIGURE 2  
GROUNDWATER ELEVATION CONTOUR MAP  
GABEL ADAM GU #1/SUTTON FOUNDERS #1  
SWNE SEC 8-T1N-R66W  
WELD COUNTY, COLORADO  
KERR-MCGEE OIL & GAS ONSHORE LP



**TABLE 1**  
**GROUNDWATER ANALYTICAL AND FIELD RESULTS**  
**GABEL ADAM GU #1/ SUTTON FOUNDERS #1**  
**WELD COUNTY, COLORADO**  
**KERR-MCGEE OIL & GAS ONSHORE LP**

Well Name	Date	Benzene (ug/L)	Toluene (ug/L)	Ethylbenzene (ug/L)	Xylenes (ug/L)	Depth to GW (ft bgs)	Relative GW Elev. (ft)
GW01	03/27/2008	130	12	98	1400	NM	NA
GW02	03/27/2008	2.2	2.3	21	280	NM	NA
MW01	05/19/2008	<1.0	<1.0	<1.0	<1.0	4.89	NA
	08/29/2008	<1.0	<1.0	<1.0	<1.0	2.63	NA
	11/21/2008	<1.0	<1.0	<1.0	<1.0	3.97	NA
	02/17/2009	<1.0	<1.0	<1.0	<1.0	4.13	NA
	05/26/2009	<1.0	<1.0	<1.0	<1.0	2.85	NA
	08/31/2009	<1.0	<1.0	<1.0	<1.0	2.71	NA
	11/23/2009	<1.0	<1.0	<1.0	<1.0	2.68	NA
	02/23/2010	<1.0	<1.0	<1.0	<1.0	3.06	NA
	05/21/2010	<1.0	<1.0	<1.0	<1.0	PVC Bent	NA
	08/05/2010	Removed from monitoring				NM	NA
MW01 destroyed as of 11/12/2013							
MW02	05/19/2008	<1.0	<1.0	<1.0	<1.0	5.10	NA
	08/29/2008	<1.0	<1.0	<1.0	<1.0	2.81	NA
	11/21/2008	<1.0	<1.0	<1.0	<1.0	4.12	NA
	02/17/2009	<1.0	<1.0	<1.0	<1.0	4.31	NA
	05/26/2009	<1.0	<1.0	<1.0	<1.0	2.97	NA
	08/31/2009	<1.0	<1.0	<1.0	<1.0	2.87	NA
	11/23/2009	<1.0	<1.0	<1.0	<1.0	2.72	NA
	02/23/2010	<1.0	<1.0	<1.0	<1.0	3.45	NA
	05/21/2010	<1.0	<1.0	<1.0	<1.0	2.99	NA
	08/05/2010	Removed from monitoring				NM	NA
MW02 destroyed as of 11/12/2013							
MW03	05/19/2008	34	2.6	21	44	5.43	92.05
	08/29/2008	21	<1.0	<1.0	<1.0	3.13	94.35
	11/21/2008	1.7	<1.0	<1.0	<1.0	4.60	92.88
	02/17/2009	<1.0	<1.0	<1.0	<1.0	4.77	92.71
	05/26/2009	<1.0	<1.0	<1.0	<1.0	3.46	94.02
	08/31/2009	<1.0	<1.0	<1.0	<1.0	2.86	94.62
	11/23/2009	1.0	<1.0	<1.0	<1.0	2.72	94.76
	02/23/2010	1.5	<1.0	<1.0	<1.0	3.75	93.73
	05/21/2010	1.9	<1.0	<1.0	<1.0	3.36	94.12
	08/05/2010	<1.0	<1.0	<1.0	<1.0	3.58	93.90
	11/12/2010	<1.0	<1.0	<1.0	<1.0	5.70	91.78
	02/16/2011	<1.0	<1.0	<1.0	<1.0	5.16	92.32
	05/06/2011	<1.0	<1.0	<1.0	<1.0	5.74	91.74





**TABLE 1 (Continued)**  
**GROUNDWATER ANALYTICAL AND FIELD RESULTS**  
**GABEL ADAM GU #1/ SUTTON FOUNDERS #1**  
**WELD COUNTY, COLORADO**  
**KERR-MCGEE OIL & GAS ONSHORE LP**

Well Name	Date	Benzene (ug/L)	Toluene (ug/L)	Ethylbenzene (ug/L)	Xylenes (ug/L)	Depth to GW (ft bgs)	Relative GW Elev. (ft)
MW03	08/08/2011	<1.0	<1.0	<1.0	<1.0	3.65	93.83
	11/10/2011	<1.0	<1.0	<1.0	<1.0	3.17	94.31
	02/21/2012	<1.0	<1.0	<1.0	<1.0	3.95	93.53
	05/04/2012	<1.0	<1.0	<1.0	<1.0	3.65	93.83
	08/16/2012	<1.0	<1.0	<1.0	<1.0	3.45	94.03
	11/30/2012	<1.0	<1.0	<1.0	<1.0	3.45	94.03
	02/25/2013	<1.0	<1.0	<1.0	<1.0	4.45	93.03
	05/03/2013	<1.0	<1.0	<1.0	<1.0	3.01	94.47
	08/23/2013	<1.0	<1.0	<1.0	<1.0	2.75	94.73
	11/12/2013	<1.0	<1.0	<1.0	<1.0	3.05	94.43
	02/06/2014	<1.0	<1.0	<1.0	<1.0	NM	NA
MW04	05/19/2008	<1.0	1.4	6.7	18	5.45	92.21
	08/29/2008	<1.0	<1.0	<1.0	2.4	3.22	94.44
	11/21/2008	<1.0	<1.0	<1.0	<1.0	2.60	95.06
	02/17/2009	<1.0	<1.0	<1.0	<1.0	4.71	92.95
	05/26/2009	<1.0	<1.0	<1.0	<1.0	3.69	93.97
	08/31/2009	<1.0	<1.0	<1.0	<1.0	3.05	94.61
	11/23/2009	<1.0	<1.0	<1.0	<1.0	2.94	94.72
	02/23/2010	<1.0	<1.0	<1.0	<1.0	3.79	93.87
	05/21/2010	<1.0	<1.0	<1.0	<1.0	3.38	94.28
	08/05/2010	<1.0	<1.0	<1.0	<1.0	3.55	94.11
	11/12/2010	<1.0	<1.0	<1.0	<1.0	5.72	91.94
	02/16/2011	<1.0	<1.0	<1.0	<1.0	5.23	92.43
	05/06/2011	<1.0	<1.0	<1.0	<1.0	5.88	91.78
	08/08/2011	<1.0	<1.0	<1.0	<1.0	3.80	93.86
	11/10/2011	<1.0	<1.0	<1.0	<1.0	3.27	94.39
	02/21/2012	<1.0	<1.0	<1.0	<1.0	3.95	93.71
	05/04/2012	<1.0	<1.0	<1.0	<1.0	3.65	94.01
	08/16/2012	<1.0	<1.0	<1.0	<1.0	2.89	94.77
	11/30/2012	<1.0	<1.0	<1.0	<1.0	3.50	94.16
	02/25/2013	<1.0	<1.0	<1.0	<1.0	4.50	93.16
	05/03/2013	<1.0	<1.0	<1.0	<1.0	3.06	94.60
	08/23/2013	<1.0	<1.0	<1.0	<1.0	2.90	94.76
	11/12/2013	<1.0	<1.0	<1.0	<1.0	3.10	94.56
	02/06/2014	<1.0	<1.0	<1.0	<3.0	NM	NA
MW05	08/29/2008	1.3	<1.0	<1.0	<1.0	2.24	NA



**TABLE 1 (Continued)**  
**GROUNDWATER ANALYTICAL AND FIELD RESULTS**  
**GABEL ADAM GU #1/ SUTTON FOUNDERS #1**  
**WELD COUNTY, COLORADO**  
**KERR-MCGEE OIL & GAS ONSHORE LP**

Well Name	Date	Benzene (ug/L)	Toluene (ug/L)	Ethylbenzene (ug/L)	Xylenes (ug/L)	Depth to GW (ft bgs)	Relative GW Elev. (ft)
MW05	11/21/2008	<1.0	<1.0	<1.0	<1.0	3.77	NA
	02/17/2009	<1.0	<1.0	<1.0	<1.0	4.06	NA
	05/26/2009	<1.0	<1.0	<1.0	<1.0	PVC Bent	NA
	08/31/2009	<1.0	<1.0	<1.0	<1.0	PVC Bent	NA
	11/23/2009	<1.0	<1.0	<1.0	<1.0	PVC Bent	NA
	02/23/2010	<1.0	<1.0	<1.0	<1.0	PVC Bent	NA
	05/21/2010	19	<1.0	<1.0	<1.0	PVC Bent	NA
	08/05/2010	<1.0	<1.0	1.1	<1.0	PVC Bent	NA
	11/12/2010	Damaged - Not Sampled				Damaged	NA
MW05 destroyed as of 2/16/2011							
MW05R	05/04/2012	<1.0	<1.0	<1.0	<1.0	3.98	92.20
	08/16/2012	<1.0	<1.0	<1.0	<1.0	3.02	93.16
	11/30/2012	<1.0	<1.0	<1.0	<1.0	2.39	93.79
	02/25/2013	Not Sampled				NM	NA
	05/03/2013	<1.0	<1.0	<1.0	<1.0	2.31	93.87
	08/23/2013	<1.0	<1.0	<1.0	<1.0	1.94	94.24
	11/12/2013	<1.0	<1.0	<1.0	<1.0	3.30	92.88
	02/06/2014	<1.0	<1.0	<1.0	<1.0	NM	NA
MW06	08/29/2008	3.1	<1.0	<1.0	<1.0	2.14	NA
	11/21/2008	<1.0	<1.0	<1.0	<1.0	3.46	NA
	02/17/2009	<1.0	<1.0	<1.0	<1.0	3.80	NA
	05/26/2009	<1.0	<1.0	<1.0	<1.0	2.10	NA
	08/31/2009	<1.0	<1.0	<1.0	<1.0	1.91	NA
	11/23/2009	<1.0	<1.0	<1.0	<1.0	2.00	NA
	02/23/2010	<1.0	<1.0	<1.0	<1.0	2.90	NA
	05/21/2010	<1.0	<1.0	<1.0	<1.0	2.32	NA
	08/05/2010	<1.0	<1.0	<1.0	<1.0	2.66	NA
	11/12/2010	<1.0	<1.0	<1.0	<1.0	4.80	NA
	02/16/2011	<1.0	<1.0	<1.0	<1.0	4.22	NA
	05/06/2011	<1.0	<1.0	<1.0	<1.0	4.90	NA
	08/08/2011	<1.0	<1.0	<1.0	<1.0	2.75	NA
	11/10/2011	<1.0	<1.0	<1.0	<1.0	2.39	NA
	02/21/2012	<1.0	<1.0	<1.0	<1.0	5.10	NA
	05/04/2012	<1.0	<1.0	<1.0	<1.0	4.80	NA
	08/16/2012	<1.0	<1.0	<1.0	<1.0	2.65	NA
	11/30/2012	<1.0	<1.0	<1.0	<1.0	2.50	NA
	02/25/2013	<1.0	<1.0	<1.0	<1.0	3.44	NA





**TABLE 1 (Continued)**  
**GROUNDWATER ANALYTICAL AND FIELD RESULTS**  
**GABEL ADAM GU #1/ SUTTON FOUNDERS #1**  
**WELD COUNTY, COLORADO**  
**KERR-MCGEE OIL & GAS ONSHORE LP**

Well Name	Date	Benzene (ug/L)	Toluene (ug/L)	Ethylbenzene (ug/L)	Xylenes (ug/L)	Depth to GW (ft bgs)	Relative GW Elev. (ft)
MW06	05/03/2013	<1.0	<1.0	<1.0	<1.0	2.11	NA
	08/23/2013	<1.0	<1.0	<1.0	<1.0	1.68	NA
MW06 destroyed as of 11/12/2013							
MW06R	02/28/2014	<4.0	<4.0	<4.0	<12.0	NM	NA
MW07	08/29/2008	270	<1.0	51	<1.0	2.98	94.40
	11/21/2008	240	<1.0	16	<1.0	4.45	92.93
	02/17/2009	140	<1.0	5.0	<1.0	4.35	93.03
	05/26/2009	140	<1.0	2.3	<1.0	3.34	94.04
	08/31/2009	300	<1.0	2.6	7.5	2.55	94.83
	11/23/2009	53	<1.0	<1.0	1.1	2.38	95.00
	02/23/2010	130	<1.0	1.7	2.3	3.67	93.71
	05/21/2010	71	<1.0	<1.0	2.5	3.28	94.10
	08/05/2010	210	<1.0	2.0	2.9	3.37	94.01
	11/12/2010	4.8	<1.0	<1.0	<1.0	5.63	91.75
	02/16/2011	82	<1.0	<1.0	<1.0	5.05	92.33
	05/06/2011	4.3	<1.0	<1.0	<1.0	5.77	91.61
	08/08/2011	75	<1.0	<1.0	<1.0	3.51	93.87
	11/10/2011	13	<1.0	<1.0	<1.0	3.01	94.37
	02/21/2012	<1.0	<1.0	<1.0	<1.0	5.45	91.93
	05/04/2012	54	<1.0	<1.0	<1.0	6.20	91.18
	08/16/2012	22	<1.0	<1.0	<1.0	6.15	91.23
	11/30/2012	5.7	<1.0	<1.0	<1.0	6.28	91.10
	02/25/2013	10	<1.0	<1.0	<1.0	7.25	90.13
	05/03/2013	4.6	<1.0	<1.0	<1.0	2.98	94.40
	08/23/2013	<1.0	<1.0	<1.0	<1.0	2.67	94.71
	11/12/2013	2.7	<1.0	<1.0	<1.0	2.97	94.41
	02/06/2014	4.0	<1.0	<1.0	<1.0	NM	NA
MW08	11/21/2008	<1.0	<1.0	<1.0	<1.0	4.12	92.75
	02/17/2009	<1.0	<1.0	<1.0	<1.0	4.70	92.17
	05/26/2009	<1.0	<1.0	<1.0	<1.0	2.75	94.12
	08/31/2009	<1.0	<1.0	<1.0	<1.0	2.58	94.29
	11/23/2009	<1.0	<1.0	<1.0	<1.0	2.38	94.49
	02/23/2010	<1.0	<1.0	<1.0	<1.0	3.65	93.22
	05/21/2010	<1.0	<1.0	<1.0	<1.0	3.20	93.67
	08/05/2010	<1.0	<1.0	<1.0	<1.0	3.65	93.22
	11/12/2010	<1.0	<1.0	<1.0	<1.0	5.94	90.93
	02/16/2011	<1.0	<1.0	<1.0	<1.0	5.10	91.77



**TABLE 1 (Continued)**  
**GROUNDWATER ANALYTICAL AND FIELD RESULTS**  
**GABEL ADAM GU #1/ SUTTON FOUNDERS #1**  
**WELD COUNTY, COLORADO**  
**KERR-MCGEE OIL & GAS ONSHORE LP**

Well Name	Date	Benzene (ug/L)	Toluene (ug/L)	Ethylbenzene (ug/L)	Xylenes (ug/L)	Depth to GW (ft bgs)	Relative GW Elev. (ft)
MW08	05/06/2011	<1.0	<1.0	<1.0	<1.0	5.84	91.03
	08/08/2011	<1.0	<1.0	<1.0	<1.0	3.76	93.11
	11/10/2011	<1.0	<1.0	<1.0	<1.0	3.13	93.74
	02/21/2012	<1.0	<1.0	<1.0	<1.0	3.90	92.97
	05/04/2012	<1.0	<1.0	<1.0	<1.0	3.68	93.19
	08/16/2012	<1.0	<1.0	<1.0	<1.0	3.40	93.47
	11/30/2012	<1.0	<1.0	<1.0	<1.0	3.40	93.47
	02/25/2013	<1.0	<1.0	<1.0	<1.0	4.48	92.39
	05/03/2013	<1.0	<1.0	<1.0	<1.0	3.06	93.81
	08/23/2013	<1.0	<1.0	<1.0	<1.0	2.50	94.37
	11/12/2013	<1.0	<1.0	<1.0	<1.0	2.38	94.49
	02/06/2014	<1.0	<1.0	<1.0	<1.0	NM	NA
MW09	11/21/2008	1.5	<1.0	180	<1.0	3.93	93.26
	02/17/2009	2.0	<1.0	100	<1.0	4.45	92.74
	05/26/2009	<1.0	<1.0	11	<1.0	3.03	94.16
	08/31/2009	3.8	<1.0	7.1	<1.0	2.17	95.02
	11/23/2009	2.3	<1.0	<1.0	<1.0	2.41	94.78
	02/23/2010	3.6	<1.0	3.3	<1.0	3.41	93.78
	05/21/2010	1.1	<1.0	<1.0	<1.0	3.00	94.19
	08/05/2010	3.4	<1.0	18	<1.0	3.13	94.06
	11/12/2010	1.5	<1.0	2.6	<1.0	5.37	91.82
	02/16/2011	1.1	<1.0	1.3	<1.0	4.99	92.20
	05/06/2011	<1.0	<1.0	<1.0	<1.0	5.63	91.56
	08/08/2011	1.8	<1.0	1.6	<1.0	3.26	93.93
	11/10/2011	<1.0	<1.0	<1.0	<1.0	2.68	94.51
	02/21/2012	1.5	<1.0	<1.0	<1.0	3.55	93.64
	05/04/2012	<1.0	<1.0	<1.0	<1.0	3.35	93.84
	08/16/2012	1.6	<1.0	<1.0	<1.0	PVC Bent	NA
	11/30/2012	<1.0	<1.0	<1.0	<1.0	3.11	94.08
	02/25/2013	1.2	<1.0	<1.0	<1.0	PVC Bent	NA
	05/03/2013	<1.0	<1.0	<1.0	<1.0	2.75	94.44
	08/23/2013	<1.0	<1.0	<1.0	<1.0	NM	NA
	08/28/2013	Removed from monitoring				NM	NA
MW10	11/21/2008	<1.0	<1.0	<1.0	<1.0	4.06	93.72
	02/17/2009	<1.0	<1.0	<1.0	<1.0	4.10	93.68
	05/26/2009	<1.0	<1.0	<1.0	<1.0	3.00	94.78





**TABLE 1 (Continued)**  
**GROUNDWATER ANALYTICAL AND FIELD RESULTS**  
**GABEL ADAM GU #1/ SUTTON FOUNDERS #1**  
**WELD COUNTY, COLORADO**  
**KERR-MCGEE OIL & GAS ONSHORE LP**

Well Name	Date	Benzene (ug/L)	Toluene (ug/L)	Ethylbenzene (ug/L)	Xylenes (ug/L)	Depth to GW (ft bgs)	Relative GW Elev. (ft)
MW10	08/31/2009	<1.0	<1.0	<1.0	<1.0	1.62	96.16
	11/23/2009	<1.0	<1.0	<1.0	<1.0	2.18	95.60
	02/23/2010	<1.0	<1.0	<1.0	<1.0	3.16	94.62
	05/21/2010	<1.0	<1.0	<1.0	<1.0	2.97	94.81
	08/05/2010	<1.0	<1.0	<1.0	<1.0	2.40	95.38
	11/12/2010	<1.0	<1.0	<1.0	<1.0	5.09	92.69
	02/16/2011	<1.0	<1.0	<1.0	<1.0	4.70	93.08
	05/06/2011	<1.0	<1.0	<1.0	<1.0	5.44	92.34
	08/08/2011	<1.0	<1.0	<1.0	<1.0	2.31	95.47
	11/10/2011	<1.0	<1.0	<1.0	<1.0	2.54	95.24
	02/21/2012	<1.0	<1.0	<1.0	<1.0	3.49	94.29
	05/04/2012	<1.0	<1.0	<1.0	<1.0	3.24	94.54
	08/16/2012	<1.0	<1.0	<1.0	<1.0	2.49	95.29
	11/30/2012	<1.0	<1.0	<1.0	<1.0	5.56	92.22
	02/25/2013	<1.0	<1.0	<1.0	<1.0	4.33	93.45
	05/03/2013	<1.0	<1.0	<1.0	<1.0	2.93	94.85
	08/23/2013	<1.0	<1.0	<1.0	<1.0	2.90	94.88
	08/28/2013	Removed from monitoring				NM	NA
Colo GW Quality Standards		5	1000	700	1400		

Notes: < - less than  
ug/L - micrograms per Liter  
NA - Not Analyzed/Not Available

GW - Groundwater      Elev. - Elevation  
Bold numbers indicate result equaled or exceeded standard.  
NM - Not Measured      ft bgs - feet below ground surface



# Summit Scientific

---

741 Corporate Circle – Suite I ♦ Golden, Colorado 80401

303.277.9310 - laboratory ♦ 303.277.9531 - fax

May 13, 2013

John Cocroft

LT Environmental, Inc.

4600 West 60th Avenue

Arvada, CO 80003

RE: KMG - Gabel Adam GU #1/ Sutton Founders #1

Enclosed are the results of analyses for samples received by Summit Scientific on 05/03/13 17:00. If you have any questions concerning this report, please feel free to contact me.

Sincerely,



Joseph J Egry IV

Laboratory Director

This report shall not be reproduced, except in its entirety, without the written approval of Summit Scientific. Test results relate only to samples analyzed.

Summit Scientific is the sole authority for authorizing edits or modifications to this document. Unauthorized modification of this report is strictly prohibited.





LT Environmental, Inc.  
4600 West 60th Avenue  
Arvada CO, 80003

Project: KMG - Gabel Adam GU #1/ Sutton Founders #1

Project Number: KMG 08373  
Project Manager: John Cocroft

**Reported:**  
05/13/13 09:30

### ANALYTICAL REPORT FOR SAMPLES

Sample ID	Laboratory ID	Matrix	Date Sampled	Date Received
MW03	R305045-01	Water	05/03/13 13:40	05/03/13 17:00
MW04	R305045-02	Water	05/03/13 13:45	05/03/13 17:00
MW06	R305045-03	Water	05/03/13 13:50	05/03/13 17:00
MW07	R305045-04	Water	05/03/13 13:55	05/03/13 17:00
MW08	R305045-05	Water	05/03/13 14:00	05/03/13 17:00
MW09	R305045-06	Water	05/03/13 14:05	05/03/13 17:00
MW10	R305045-07	Water	05/03/13 14:10	05/03/13 17:00
MW05R	R305045-08	Water	05/03/13 14:15	05/03/13 17:00

Summit Scientific

*The results in this report apply to the samples analyzed in accordance with the chain of custody document. This analytical report must be reproduced in its entirety.*

S<sub>2</sub>

LT Environmental, Inc.  
4600 West 60th Avenue  
Arvada CO, 80003

Project: KMG - Gabel Adam GU #1/ Sutton Founders #1

Project Number: KMG 08373  
Project Manager: John Cocroft

Reported:  
05/13/13 09:30

Summit Scientific  
R305045 Page 1 of 1

741 Corporate Circle - Suite 1  
Golden, Colorado 80401  
303-277-9510 ~ 303-374-5933 Fax

Client: LT Environmental, Inc. 88334635  
Project: KMG - Gabel Adam GU #1/ Sutton Founders #1  
Project Manager: John Cocroft  
Project Number: KMG 08373

Number	Sample Identification	Matrix	Type	Sample Date	Sample Time	Sampled By	Container	Qty	Analyses
01-001	MW03	Water	Field Sample	5/13/13	1340	JK	Van Val - HCl	3	ES008 BTEX_TNXL
02-001	MW04	Water	Field Sample		1345		Van Val - HCl	3	ES008 BTEX_TNXL
03-001	MW06	Water	Field Sample		1350		Van Val - HCl	3	ES008 BTEX_TNXL
04-001	MW07	Water	Field Sample		1355		Van Val - HCl	3	ES008 BTEX_TNXL
05-001	MW08	Water	Field Sample		1400		Van Val - HCl	3	ES008 BTEX_TNXL
06-001	MW09	Water	Field Sample		1405		Van Val - HCl	3	ES008 BTEX_TNXL
07-001	MW10	Water	Field Sample		1410		Van Val - HCl	3	ES008 BTEX_TNXL
08-001	MW05R	Water	Field Sample		1415		Van Val - HCl	3	ES008 BTEX_TNXL

Turn Around Time (Check)

Same Day ☐ 72 Hours ☒  
24 Hours ☐ Standard ☐  
48 Hours ☐

Sample Integrity: 5.7  
Temperature Range: 5.7  
Date: 5/13/13

Relinquished By: Date:

Received By: Date:

Relinquished By: JK Date: 5/13/13

Received By: M. Penta Date: 5/13/13

Summit Scientific

The results in this report apply to the samples analyzed in accordance with the chain of custody document. This analytical report must be reproduced in its entirety.



LT Environmental, Inc.  
4600 West 60th Avenue  
Arvada CO, 80003

Project: KMG - Gabel Adam GU #1/ Sutton Founders #1  
Project Number: KMG 08373  
Project Manager: John Cocroft

Reported:  
05/13/13 09:30

**MW03**  
**R305045-01 (Water)**

**Summit Scientific**

**Volatile Organic Compounds by EPA Method 8260B**

Date Sampled: 05/03/13 13:40

Analyte	Result	Reporting Limit	Units	Dilution	Batch	Prepared	Analyzed	Method	Notes
Benzene	ND	1.0	ug/l	1	3050919	05/10/13	05/10/13	EPA 8260B	
Toluene	ND	1.0	"	"	"	"	"	"	
Ethylbenzene	ND	1.0	"	"	"	"	"	"	
Xylenes (total)	ND	1.0	"	"	"	"	"	"	

Date Sampled: 05/03/13 13:40

Analyte	Result	Reporting Limit	Units	Dilution	Batch	Prepared	Analyzed	Method	Notes
Surrogate: 1,2-Dichloroethane-d4		87.0 %	37-154		"	"	"	"	
Surrogate: Toluene-d8		95.6 %	45-149		"	"	"	"	
Surrogate: 4-Bromofluorobenzene		93.0 %	45-146		"	"	"	"	

Summit Scientific

The results in this report apply to the samples analyzed in accordance with the chain of custody document. This analytical report must be reproduced in its entirety.



S<sub>2</sub>

LT Environmental, Inc.  
4600 West 60th Avenue  
Arvada CO, 80003

Project: KMG - Gabel Adam GU #1/ Sutton Founders #1  
Project Number: KMG 08373  
Project Manager: John Cocroft

Reported:  
05/13/13 09:30

**MW04**  
**R305045-02 (Water)**

**Summit Scientific**

**Volatile Organic Compounds by EPA Method 8260B**

Date Sampled: 05/03/13 13:45

Analyte	Result	Reporting Limit	Units	Dilution	Batch	Prepared	Analyzed	Method	Notes
Benzene	ND	1.0	ug/l	1	3050919	05/10/13	05/10/13	EPA 8260B	
Toluene	ND	1.0	"	"	"	"	"	"	
Ethylbenzene	ND	1.0	"	"	"	"	"	"	
Xylenes (total)	ND	1.0	"	"	"	"	"	"	

Date Sampled: 05/03/13 13:45

Analyte	Result	Reporting Limit	Units	Dilution	Batch	Prepared	Analyzed	Method	Notes
Surrogate: 1,2-Dichloroethane-d4		85.6 %	37-154		"	"	"	"	
Surrogate: Toluene-d8		95.0 %	45-149		"	"	"	"	
Surrogate: 4-Bromofluorobenzene		94.7 %	45-146		"	"	"	"	

Summit Scientific

The results in this report apply to the samples analyzed in accordance with the chain of custody document. This analytical report must be reproduced in its entirety.



LT Environmental, Inc.  
4600 West 60th Avenue  
Arvada CO, 80003

Project: KMG - Gabel Adam GU #1/ Sutton Founders #1  
Project Number: KMG 08373  
Project Manager: John Cocroft

Reported:  
05/13/13 09:30

**MW06**  
**R305045-03 (Water)**

**Summit Scientific**

**Volatile Organic Compounds by EPA Method 8260B**

Date Sampled: 05/03/13 13:50

Analyte	Result	Reporting Limit	Units	Dilution	Batch	Prepared	Analyzed	Method	Notes
Benzene	ND	1.0	ug/l	1	3050919	05/11/13	05/11/13	EPA 8260B	
Toluene	ND	1.0	"	"	"	"	"	"	
Ethylbenzene	ND	1.0	"	"	"	"	"	"	
Xylenes (total)	ND	1.0	"	"	"	"	"	"	

Date Sampled: 05/03/13 13:50

Analyte	Result	Reporting Limit	Units	Dilution	Batch	Prepared	Analyzed	Method	Notes
Surrogate: 1,2-Dichloroethane-d4		89.0 %	37-154		"	"	"	"	
Surrogate: Toluene-d8		95.5 %	45-149		"	"	"	"	
Surrogate: 4-Bromofluorobenzene		91.1 %	45-146		"	"	"	"	

Summit Scientific

The results in this report apply to the samples analyzed in accordance with the chain of custody document. This analytical report must be reproduced in its entirety.



LT Environmental, Inc.  
4600 West 60th Avenue  
Arvada CO, 80003

Project: KMG - Gabel Adam GU #1/ Sutton Founders #1  
Project Number: KMG 08373  
Project Manager: John Cocroft

Reported:  
05/13/13 09:30

MW07  
R305045-04 (Water)

Summit Scientific

Volatile Organic Compounds by EPA Method 8260B

Date Sampled: 05/03/13 13:55

Analyte	Result	Reporting Limit	Units	Dilution	Batch	Prepared	Analyzed	Method	Notes
Benzene	4.6	1.0	ug/l	1	3050919	05/11/13	05/11/13	EPA 8260B	
Toluene	ND	1.0	"	"	"	"	"	"	
Ethylbenzene	ND	1.0	"	"	"	"	"	"	
Xylenes (total)	ND	1.0	"	"	"	"	"	"	

Date Sampled: 05/03/13 13:55

Analyte	Result	Reporting Limit	Units	Dilution	Batch	Prepared	Analyzed	Method	Notes
Surrogate: 1,2-Dichloroethane-d4		86.1 %	37-154		"	"	"	"	
Surrogate: Toluene-d8		95.3 %	45-149		"	"	"	"	
Surrogate: 4-Bromofluorobenzene		90.6 %	45-146		"	"	"	"	

Summit Scientific

The results in this report apply to the samples analyzed in accordance with the chain of custody document. This analytical report must be reproduced in its entirety.





LT Environmental, Inc.  
4600 West 60th Avenue  
Arvada CO, 80003

Project: KMG - Gabel Adam GU #1/ Sutton Founders #1  
Project Number: KMG 08373  
Project Manager: John Cocroft

Reported:  
05/13/13 09:30

**MW08**  
**R305045-05 (Water)**

**Summit Scientific**

**Volatile Organic Compounds by EPA Method 8260B**

Date Sampled: 05/03/13 14:00

Analyte	Result	Reporting Limit	Units	Dilution	Batch	Prepared	Analyzed	Method	Notes
Benzene	ND	1.0	ug/l	1	3050919	05/11/13	05/11/13	EPA 8260B	
Toluene	ND	1.0	"	"	"	"	"	"	
Ethylbenzene	ND	1.0	"	"	"	"	"	"	
Xylenes (total)	ND	1.0	"	"	"	"	"	"	

Date Sampled: 05/03/13 14:00

Analyte	Result	Reporting Limit	Units	Dilution	Batch	Prepared	Analyzed	Method	Notes
Surrogate: 1,2-Dichloroethane-d4		81.2 %	37-154		"	"	"	"	
Surrogate: Toluene-d8		95.8 %	45-149		"	"	"	"	
Surrogate: 4-Bromofluorobenzene		94.0 %	45-146		"	"	"	"	

Summit Scientific

The results in this report apply to the samples analyzed in accordance with the chain of custody document. This analytical report must be reproduced in its entirety.



LT Environmental, Inc.  
4600 West 60th Avenue  
Arvada CO, 80003

Project: KMG - Gabel Adam GU #1/ Sutton Founders #1  
Project Number: KMG 08373  
Project Manager: John Cocroft

Reported:  
05/13/13 09:30

MW09  
R305045-06 (Water)

Summit Scientific

Volatile Organic Compounds by EPA Method 8260B

Date Sampled: 05/03/13 14:05

Analyte	Result	Reporting Limit	Units	Dilution	Batch	Prepared	Analyzed	Method	Notes
Benzene	ND	1.0	ug/l	1	3050919	05/11/13	05/11/13	EPA 8260B	
Toluene	ND	1.0	"	"	"	"	"	"	
Ethylbenzene	ND	1.0	"	"	"	"	"	"	
Xylenes (total)	ND	1.0	"	"	"	"	"	"	

Date Sampled: 05/03/13 14:05

Analyte	Result	Reporting Limit	Units	Dilution	Batch	Prepared	Analyzed	Method	Notes
Surrogate: 1,2-Dichloroethane-d4		74.1 %	37-154		"	"	"	"	
Surrogate: Toluene-d8		94.1 %	45-149		"	"	"	"	
Surrogate: 4-Bromofluorobenzene		89.4 %	45-146		"	"	"	"	

Summit Scientific

The results in this report apply to the samples analyzed in accordance with the chain of custody document. This analytical report must be reproduced in its entirety.



LT Environmental, Inc.  
4600 West 60th Avenue  
Arvada CO, 80003

Project: KMG - Gabel Adam GU #1/ Sutton Founders #1  
Project Number: KMG 08373  
Project Manager: John Cocroft

Reported:  
05/13/13 09:30

**MW10**  
**R305045-07 (Water)**

**Summit Scientific**

**Volatile Organic Compounds by EPA Method 8260B**

Date Sampled: 05/03/13 14:10

Analyte	Result	Reporting Limit	Units	Dilution	Batch	Prepared	Analyzed	Method	Notes
Benzene	ND	1.0	ug/l	1	3050919	05/11/13	05/11/13	EPA 8260B	
Toluene	ND	1.0	"	"	"	"	"	"	
Ethylbenzene	ND	1.0	"	"	"	"	"	"	
Xylenes (total)	ND	1.0	"	"	"	"	"	"	

Date Sampled: 05/03/13 14:10

Analyte	Result	Reporting Limit	Units	Dilution	Batch	Prepared	Analyzed	Method	Notes
Surrogate: 1,2-Dichloroethane-d4		88.6 %	37-154		"	"	"	"	
Surrogate: Toluene-d8		95.2 %	45-149		"	"	"	"	
Surrogate: 4-Bromofluorobenzene		94.0 %	45-146		"	"	"	"	

Summit Scientific

The results in this report apply to the samples analyzed in accordance with the chain of custody document. This analytical report must be reproduced in its entirety.





LT Environmental, Inc.  
4600 West 60th Avenue  
Arvada CO, 80003

Project: KMG - Gabel Adam GU #1/ Sutton Founders #1  
Project Number: KMG 08373  
Project Manager: John Cocroft

Reported:  
05/13/13 09:30

**MW05R**  
**R305045-08 (Water)**

**Summit Scientific**

**Volatile Organic Compounds by EPA Method 8260B**

Date Sampled: 05/03/13 14:15

Analyte	Result	Reporting Limit	Units	Dilution	Batch	Prepared	Analyzed	Method	Notes
Benzene	ND	1.0	ug/l	1	3050919	05/11/13	05/11/13	EPA 8260B	
Toluene	ND	1.0	"	"	"	"	"	"	
Ethylbenzene	ND	1.0	"	"	"	"	"	"	
Xylenes (total)	ND	1.0	"	"	"	"	"	"	

Date Sampled: 05/03/13 14:15

Analyte	Result	Reporting Limit	Units	Dilution	Batch	Prepared	Analyzed	Method	Notes
Surrogate: 1,2-Dichloroethane-d4		88.1 %	37-154		"	"	"	"	
Surrogate: Toluene-d8		96.1 %	45-149		"	"	"	"	
Surrogate: 4-Bromofluorobenzene		94.9 %	45-146		"	"	"	"	

Summit Scientific

The results in this report apply to the samples analyzed in accordance with the chain of custody document. This analytical report must be reproduced in its entirety.



LT Environmental, Inc.  
4600 West 60th Avenue  
Arvada CO, 80003

Project: KMG - Gabel Adam GU #1/ Sutton Founders #1  
Project Number: KMG 08373  
Project Manager: John Cocroft

Reported:  
05/13/13 09:30

**Volatile Organic Compounds by EPA Method 8260B - Quality Control**  
**Summit Scientific**

Analyte	Reporting			Spike	Source		%REC		RPD	
	Result	Limit	Units	Level	Result	%REC	Limits	RPD	Limit	Notes

**Batch 3050919 - EPA 5030 Water MS**

**Blank (3050919-BLK1)**

Prepared & Analyzed: 05/10/13

Benzene	ND	1.0	ug/l							
Toluene	ND	1.0	"							
Ethylbenzene	ND	1.0	"							
Xylenes (total)	ND	1.0	"							
Surrogate: 1,2-Dichloroethane-d4	11.5		"	13.2		87.2	37-154			
Surrogate: Toluene-d8	12.7		"	13.3		95.4	45-149			
Surrogate: 4-Bromofluorobenzene	12.5		"	13.3		93.8	45-146			

**Blank (3050919-BLK2)**

Prepared & Analyzed: 05/10/13

Benzene	ND	1.0	ug/l							
Toluene	ND	1.0	"							
Ethylbenzene	ND	1.0	"							
Xylenes (total)	ND	1.0	"							
Surrogate: 1,2-Dichloroethane-d4	11.2		"	13.2		84.3	37-154			
Surrogate: Toluene-d8	12.6		"	13.3		94.5	45-149			
Surrogate: 4-Bromofluorobenzene	12.4		"	13.3		93.3	45-146			

**LCS (3050919-BS1)**

Prepared & Analyzed: 05/10/13

Benzene	19.3	1.0	ug/l	33.3		57.9	51-132			
Toluene	23.6	1.0	"	33.3		70.9	51-138			
Ethylbenzene	22.4	1.0	"	33.3		67.2	58-146			
m,p-Xylene	46.2	2.0	"	66.7		69.4	57-144			
o-Xylene	21.9	1.0	"	33.3		65.8	53-146			
Surrogate: 1,2-Dichloroethane-d4	11.7		"	13.2		88.2	37-154			
Surrogate: Toluene-d8	12.9		"	13.3		97.1	45-149			
Surrogate: 4-Bromofluorobenzene	12.4		"	13.3		93.4	45-146			

**LCS (3050919-BS2)**

Prepared & Analyzed: 05/10/13

Benzene	21.6	1.0	ug/l	33.3		64.8	51-132			
Toluene	26.3	1.0	"	33.3		78.8	51-138			
Ethylbenzene	26.0	1.0	"	33.3		77.9	58-146			
m,p-Xylene	53.3	2.0	"	66.7		80.0	57-144			
o-Xylene	25.3	1.0	"	33.3		76.0	53-146			
Surrogate: 1,2-Dichloroethane-d4	11.6		"	13.2		87.3	37-154			
Surrogate: Toluene-d8	12.7		"	13.3		95.2	45-149			
Surrogate: 4-Bromofluorobenzene	12.5		"	13.3		93.8	45-146			

Summit Scientific

The results in this report apply to the samples analyzed in accordance with the chain of custody document. This analytical report must be reproduced in its entirety.



LT Environmental, Inc.  
4600 West 60th Avenue  
Arvada CO, 80003

Project: KMG - Gabel Adam GU #1/ Sutton Founders #1  
Project Number: KMG 08373  
Project Manager: John Cocroft

Reported:  
05/13/13 09:30

**Volatile Organic Compounds by EPA Method 8260B - Quality Control**  
**Summit Scientific**

Analyte	Reporting			Spike	Source		%REC		RPD	
	Result	Limit	Units	Level	Result	%REC	Limits	RPD	Limit	Notes

**Batch 3050919 - EPA 5030 Water MS**

LCS Dup (3050919-BSD1)				Prepared & Analyzed: 05/10/13						
Benzene	21.4	1.0	ug/l	33.3		64.4	51-132	10.6	17	
Toluene	25.9	1.0	"	33.3		77.8	51-138	9.29	17	
Ethylbenzene	25.4	1.0	"	33.3		76.1	58-146	12.3	16	
m,p-Xylene	52.2	2.0	"	66.7		78.2	57-144	12.0	16	
o-Xylene	24.9	1.0	"	33.3		74.6	53-146	12.5	15	
Surrogate: 1,2-Dichloroethane-d4	11.8		"	13.2		89.3	37-154			
Surrogate: Toluene-d8	12.8		"	13.3		96.2	45-149			
Surrogate: 4-Bromofluorobenzene	12.7		"	13.3		95.4	45-146			

Matrix Spike (3050919-MS1)				Source: R305036-01		Prepared & Analyzed: 05/10/13				
Benzene	20.0	1.0	ug/l	33.3	ND	60.1	34-141			
Toluene	24.1	1.0	"	33.3	ND	72.3	27-151			
Ethylbenzene	23.6	1.0	"	33.3	ND	70.9	29-160			
m,p-Xylene	47.9	2.0	"	66.7	ND	71.8	20-166			
o-Xylene	23.0	1.0	"	33.3	ND	69.1	33-159			
Surrogate: 1,2-Dichloroethane-d4	11.7		"	13.2		88.3	37-154			
Surrogate: Toluene-d8	12.7		"	13.3		95.2	45-149			
Surrogate: 4-Bromofluorobenzene	12.6		"	13.3		94.1	45-146			

Matrix Spike (3050919-MS2)				Source: R305036-02		Prepared & Analyzed: 05/10/13				
Benzene	19.3	1.0	ug/l	33.3	ND	58.0	34-141			
Toluene	23.2	1.0	"	33.3	ND	69.7	27-151			
Ethylbenzene	22.9	1.0	"	33.3	ND	68.7	29-160			
m,p-Xylene	46.9	2.0	"	66.7	ND	70.4	20-166			
o-Xylene	22.3	1.0	"	33.3	ND	66.8	33-159			
Surrogate: 1,2-Dichloroethane-d4	11.8		"	13.2		89.3	37-154			
Surrogate: Toluene-d8	12.7		"	13.3		95.0	45-149			
Surrogate: 4-Bromofluorobenzene	12.6		"	13.3		94.7	45-146			

Summit Scientific

The results in this report apply to the samples analyzed in accordance with the chain of custody document. This analytical report must be reproduced in its entirety.





LT Environmental, Inc.  
4600 West 60th Avenue  
Arvada CO, 80003

Project: KMG - Gabel Adam GU #1/ Sutton Founders #1  
Project Number: KMG 08373  
Project Manager: John Cocroft

Reported:  
05/13/13 09:30

**Volatile Organic Compounds by EPA Method 8260B - Quality Control**  
**Summit Scientific**

Analyte	Reporting			Spike	Source		%REC		RPD	
	Result	Limit	Units	Level	Result	%REC	Limits	RPD	Limit	Notes

**Batch 3050919 - EPA 5030 Water MS**

Matrix Spike Dup (3050919-MSD1)			Source: R305036-01		Prepared & Analyzed: 05/10/13					
Benzene	21.8	1.0	ug/l	33.3	ND	65.3	34-141	8.38	32	
Toluene	26.6	1.0	"	33.3	ND	79.8	27-151	9.86	25	
Ethylbenzene	26.6	1.0	"	33.3	ND	79.7	29-160	11.7	50	
m,p-Xylene	54.0	2.0	"	66.7	ND	81.1	20-166	12.1	36	
o-Xylene	25.6	1.0	"	33.3	ND	76.7	33-159	10.4	26	
Surrogate: 1,2-Dichloroethane-d4	11.7		"	13.2		88.3	37-154			
Surrogate: Toluene-d8	12.4		"	13.3		93.2	45-149			
Surrogate: 4-Bromofluorobenzene	12.5		"	13.3		94.1	45-146			
Matrix Spike Dup (3050919-MSD2)			Source: R305036-02		Prepared & Analyzed: 05/10/13					
Benzene	19.3	1.0	ug/l	33.3	ND	57.9	34-141	0.259	32	
Toluene	23.7	1.0	"	33.3	ND	71.1	27-151	2.00	25	
Ethylbenzene	23.0	1.0	"	33.3	ND	69.0	29-160	0.436	50	
m,p-Xylene	47.1	2.0	"	66.7	ND	70.6	20-166	0.404	36	
o-Xylene	22.7	1.0	"	33.3	ND	68.0	33-159	1.83	26	
Surrogate: 1,2-Dichloroethane-d4	12.0		"	13.2		90.5	37-154			
Surrogate: Toluene-d8	12.7		"	13.3		95.5	45-149			
Surrogate: 4-Bromofluorobenzene	12.6		"	13.3		94.7	45-146			

Summit Scientific

The results in this report apply to the samples analyzed in accordance with the chain of custody document. This analytical report must be reproduced in its entirety.



LT Environmental, Inc.  
4600 West 60th Avenue  
Arvada CO, 80003

Project: KMG - Gabel Adam GU #1/ Sutton Founders #1

Project Number: KMG 08373  
Project Manager: John Cocroft

**Reported:**  
05/13/13 09:30

### Notes and Definitions

DET Analyte DETECTED  
ND Analyte NOT DETECTED at or above the reporting limit  
NR Not Reported  
dry Sample results reported on a dry weight basis  
RPD Relative Percent Difference

---

Summit Scientific

*The results in this report apply to the samples analyzed in accordance with the chain of custody document. This analytical report must be reproduced in its entirety.*

# Summit Scientific

---

741 Corporate Circle – Suite I ♦ Golden, Colorado 80401

303.277.9310 - laboratory ♦ 303.277.9531 - fax

August 28, 2013

John Cocroft  
LT Environmental, Inc.  
4600 West 60th Avenue  
Arvada, CO 80003

RE: KMG - Gabel Adam GU #1/ Sutton Founders #1

Enclosed are the results of analyses for samples received by Summit Scientific on 08/26/13 17:00. If you have any questions concerning this report, please feel free to contact me.

Sincerely,



Joseph J Egry IV  
Laboratory Director

This report shall not be reproduced, except in its entirety, without the written approval of Summit Scientific. Test results relate only to samples analyzed.

Summit Scientific is the sole authority for authorizing edits or modifications to this document. Unauthorized modification of this report is strictly prohibited.



LT Environmental, Inc.  
4600 West 60th Avenue  
Arvada CO, 80003

Project: KMG - Gabel Adam GU #1/ Sutton Founders #1

Project Number: KMG 08373  
Project Manager: John Cocroft

**Reported:**  
08/28/13 14:42

### ANALYTICAL REPORT FOR SAMPLES

Sample ID	Laboratory ID	Matrix	Date Sampled	Date Received
MW03	R308252-01	Water	08/23/13 12:55	08/26/13 17:00
MW04	R308252-02	Water	08/23/13 13:00	08/26/13 17:00
MW06	R308252-03	Water	08/23/13 13:05	08/26/13 17:00
MW07	R308252-04	Water	08/23/13 13:10	08/26/13 17:00
MW08	R308252-05	Water	08/23/13 13:15	08/26/13 17:00
MW09	R308252-06	Water	08/23/13 13:20	08/26/13 17:00
MW10	R308252-07	Water	08/23/13 13:25	08/26/13 17:00
MW05R	R308252-08	Water	08/23/13 13:30	08/26/13 17:00

Summit Scientific

*The results in this report apply to the samples analyzed in accordance with the chain of custody document. This analytical report must be reproduced in its entirety.*



LT Environmental, Inc.  
4600 West 60th Avenue  
Arvada CO, 80003

Project: KMG - Gabel Adam GU #1/ Sutton Founders #1

Project Number: KMG 08373  
Project Manager: John Cocroft

Reported:  
08/28/13 14:42

741 Corporate Circle - Suite 1  
Golden, Colorado 80401  
303-277-5910 ~ 303-574-5933 Fax

Summit Scientific R308252 Page 1 of 1

Client: LT Environmental, Inc.		Project Manager: John Cocroft		8834626					
Project: KMG - Gabel Adam GU #1 Sutton Founders #1		Project Number: KMG 08373							
Number	Sample Identification	Matrix	Type	Sample Date	Sample Time	Sampled By	Container	Qty	Analyses
01-001	MW003	Water	Field Sample	8/28/13	1255	JL	Ven Vid - HCl	3	E5008 BTEX_TNXL
02-001	MW004	Water	Field Sample		1300		Ven Vid - HCl	3	E5008 BTEX_TNXL
03-001	MW006	Water	Field Sample		1305		Ven Vid - HCl	3	E5008 BTEX_TNXL
04-001	MW007	Water	Field Sample		1316		Ven Vid - HCl	3	E5008 BTEX_TNXL
05-001	MW008	Water	Field Sample		1315		Ven Vid - HCl	3	E5008 BTEX_TNXL
06-001	MW009	Water	Field Sample		1320		Ven Vid - HCl	3	E5008 BTEX_TNXL
07-001	MW010	Water	Field Sample		1325		Ven Vid - HCl	3	E5008 BTEX_TNXL
08-001	MW008R	Water	Field Sample		1330		Ven Vid - HCl	3	E5008 BTEX_TNXL

Turn Around Time (Check)

See Day  
24 Hours  
48 Hours

Sample Integrity:  
Temperature (Use Range)

8°C  
Inlet (C) No

8/23/13

Date

Relinquished By

Date

8/26/13

Date

Received By

Date

Summit Scientific

The results in this report apply to the samples analyzed in accordance with the chain of custody document. This analytical report must be reproduced in its entirety.

S<sub>2</sub>

LT Environmental, Inc.  
4600 West 60th Avenue  
Arvada CO, 80003

Project: KMG - Gabel Adam GU #1/ Sutton Founders #1  
Project Number: KMG 08373  
Project Manager: John Cocroft

**Reported:**  
08/28/13 14:42

**MW03**  
**R308252-01 (Water)**

**Summit Scientific**

**Volatile Organic Compounds by EPA Method 8260B**

Date Sampled: 08/23/13 12:55

Analyte	Result	Reporting Limit	Units	Dilution	Batch	Prepared	Analyzed	Method	Notes
Benzene	ND	1.0	ug/l	1	3082707	08/27/13	08/28/13	EPA 8260B	
Toluene	ND	1.0	"	"	"	"	"	"	
Ethylbenzene	ND	1.0	"	"	"	"	"	"	
Xylenes (total)	ND	1.0	"	"	"	"	"	"	

Date Sampled: 08/23/13 12:55

Analyte	Result	Reporting Limit	Units	Dilution	Batch	Prepared	Analyzed	Method	Notes
Surrogate: 1,2-Dichloroethane-d4		113 %	37-154		"	"	"	"	
Surrogate: Toluene-d8		104 %	45-149		"	"	"	"	
Surrogate: 4-Bromofluorobenzene		115 %	45-146		"	"	"	"	

Summit Scientific

The results in this report apply to the samples analyzed in accordance with the chain of custody document. This analytical report must be reproduced in its entirety.



LT Environmental, Inc.  
4600 West 60th Avenue  
Arvada CO, 80003

Project: KMG - Gabel Adam GU #1/ Sutton Founders #1

Project Number: KMG 08373  
Project Manager: John Cocroft

Reported:  
08/28/13 14:42

**MW04**  
**R308252-02 (Water)**

**Summit Scientific**

**Volatile Organic Compounds by EPA Method 8260B**

Date Sampled: 08/23/13 13:00

Analyte	Result	Reporting Limit	Units	Dilution	Batch	Prepared	Analyzed	Method	Notes
Benzene	ND	1.0	ug/l	1	3082707	08/27/13	08/28/13	EPA 8260B	
Toluene	ND	1.0	"	"	"	"	"	"	
Ethylbenzene	ND	1.0	"	"	"	"	"	"	
Xylenes (total)	ND	1.0	"	"	"	"	"	"	

Date Sampled: 08/23/13 13:00

Analyte	Result	Reporting Limit	Units	Dilution	Batch	Prepared	Analyzed	Method	Notes
Surrogate: 1,2-Dichloroethane-d4		106 %	37-154		"	"	"	"	
Surrogate: Toluene-d8		102 %	45-149		"	"	"	"	
Surrogate: 4-Bromofluorobenzene		116 %	45-146		"	"	"	"	

Summit Scientific

The results in this report apply to the samples analyzed in accordance with the chain of custody document. This analytical report must be reproduced in its entirety.

S<sub>2</sub>

LT Environmental, Inc.  
4600 West 60th Avenue  
Arvada CO, 80003

Project: KMG - Gabel Adam GU #1/ Sutton Founders #1

Project Number: KMG 08373  
Project Manager: John Cocroft

Reported:  
08/28/13 14:42

**MW06**  
**R308252-03 (Water)**

**Summit Scientific**

**Volatile Organic Compounds by EPA Method 8260B**

Date Sampled: 08/23/13 13:05

Analyte	Result	Reporting Limit	Units	Dilution	Batch	Prepared	Analyzed	Method	Notes
Benzene	ND	1.0	ug/l	1	3082707	08/27/13	08/28/13	EPA 8260B	
Toluene	ND	1.0	"	"	"	"	"	"	
Ethylbenzene	ND	1.0	"	"	"	"	"	"	
Xylenes (total)	ND	1.0	"	"	"	"	"	"	

Date Sampled: 08/23/13 13:05

Analyte	Result	Reporting Limit	Units	Dilution	Batch	Prepared	Analyzed	Method	Notes
Surrogate: 1,2-Dichloroethane-d4		106 %	37-154		"	"	"	"	
Surrogate: Toluene-d8		103 %	45-149		"	"	"	"	
Surrogate: 4-Bromofluorobenzene		114 %	45-146		"	"	"	"	

Summit Scientific

The results in this report apply to the samples analyzed in accordance with the chain of custody document. This analytical report must be reproduced in its entirety.





LT Environmental, Inc.  
4600 West 60th Avenue  
Arvada CO, 80003

Project: KMG - Gabel Adam GU #1/ Sutton Founders #1  
Project Number: KMG 08373  
Project Manager: John Cocroft

Reported:  
08/28/13 14:42

**MW07**  
**R308252-04 (Water)**

**Summit Scientific**

**Volatile Organic Compounds by EPA Method 8260B**

Date Sampled: 08/23/13 13:10

Analyte	Result	Reporting Limit	Units	Dilution	Batch	Prepared	Analyzed	Method	Notes
Benzene	ND	1.0	ug/l	1	3082707	08/27/13	08/28/13	EPA 8260B	
Toluene	ND	1.0	"	"	"	"	"	"	
Ethylbenzene	ND	1.0	"	"	"	"	"	"	
Xylenes (total)	ND	1.0	"	"	"	"	"	"	

Date Sampled: 08/23/13 13:10

Analyte	Result	Reporting Limit	Units	Dilution	Batch	Prepared	Analyzed	Method	Notes
Surrogate: 1,2-Dichloroethane-d4		109 %	37-154		"	"	"	"	
Surrogate: Toluene-d8		104 %	45-149		"	"	"	"	
Surrogate: 4-Bromofluorobenzene		110 %	45-146		"	"	"	"	

Summit Scientific

The results in this report apply to the samples analyzed in accordance with the chain of custody document. This analytical report must be reproduced in its entirety.

S<sub>2</sub>

LT Environmental, Inc.  
4600 West 60th Avenue  
Arvada CO, 80003

Project: KMG - Gabel Adam GU #1/ Sutton Founders #1

Project Number: KMG 08373  
Project Manager: John Cocroft

**Reported:**  
08/28/13 14:42

**MW08**  
**R308252-05 (Water)**

**Summit Scientific**

**Volatile Organic Compounds by EPA Method 8260B**

Date Sampled: 08/23/13 13:15

Analyte	Result	Reporting Limit	Units	Dilution	Batch	Prepared	Analyzed	Method	Notes
Benzene	ND	1.0	ug/l	1	3082707	08/27/13	08/28/13	EPA 8260B	
Toluene	ND	1.0	"	"	"	"	"	"	
Ethylbenzene	ND	1.0	"	"	"	"	"	"	
Xylenes (total)	ND	1.0	"	"	"	"	"	"	

Date Sampled: 08/23/13 13:15

Analyte	Result	Reporting Limit	Units	Dilution	Batch	Prepared	Analyzed	Method	Notes
Surrogate: 1,2-Dichloroethane-d4		109 %	37-154		"	"	"	"	
Surrogate: Toluene-d8		105 %	45-149		"	"	"	"	
Surrogate: 4-Bromofluorobenzene		112 %	45-146		"	"	"	"	

Summit Scientific

The results in this report apply to the samples analyzed in accordance with the chain of custody document. This analytical report must be reproduced in its entirety.

S2

LT Environmental, Inc.  
4600 West 60th Avenue  
Arvada CO, 80003

Project: KMG - Gabel Adam GU #1/ Sutton Founders #1  
Project Number: KMG 08373  
Project Manager: John Cocroft

Reported:  
08/28/13 14:42

**MW09**  
**R308252-06 (Water)**

**Summit Scientific**

**Volatile Organic Compounds by EPA Method 8260B**

Date Sampled: 08/23/13 13:20

Analyte	Result	Reporting Limit	Units	Dilution	Batch	Prepared	Analyzed	Method	Notes
Benzene	ND	1.0	ug/l	1	3082707	08/27/13	08/28/13	EPA 8260B	
Toluene	ND	1.0	"	"	"	"	"	"	
Ethylbenzene	ND	1.0	"	"	"	"	"	"	
Xylenes (total)	ND	1.0	"	"	"	"	"	"	

Date Sampled: 08/23/13 13:20

Analyte	Result	Reporting Limit	Units	Dilution	Batch	Prepared	Analyzed	Method	Notes
Surrogate: 1,2-Dichloroethane-d4		106 %	37-154		"	"	"	"	
Surrogate: Toluene-d8		104 %	45-149		"	"	"	"	
Surrogate: 4-Bromofluorobenzene		110 %	45-146		"	"	"	"	

Summit Scientific

The results in this report apply to the samples analyzed in accordance with the chain of custody document. This analytical report must be reproduced in its entirety.



LT Environmental, Inc.  
4600 West 60th Avenue  
Arvada CO, 80003

Project: KMG - Gabel Adam GU #1/ Sutton Founders #1  
Project Number: KMG 08373  
Project Manager: John Cocroft

Reported:  
08/28/13 14:42

**MW10**  
**R308252-07 (Water)**

**Summit Scientific**

**Volatile Organic Compounds by EPA Method 8260B**

Date Sampled: 08/23/13 13:25

Analyte	Result	Reporting Limit	Units	Dilution	Batch	Prepared	Analyzed	Method	Notes
Benzene	ND	1.0	ug/l	1	3082707	08/27/13	08/28/13	EPA 8260B	
Toluene	ND	1.0	"	"	"	"	"	"	
Ethylbenzene	ND	1.0	"	"	"	"	"	"	
Xylenes (total)	ND	1.0	"	"	"	"	"	"	

Date Sampled: 08/23/13 13:25

Analyte	Result	Reporting Limit	Units	Dilution	Batch	Prepared	Analyzed	Method	Notes
Surrogate: 1,2-Dichloroethane-d4		108 %	37-154		"	"	"	"	
Surrogate: Toluene-d8		103 %	45-149		"	"	"	"	
Surrogate: 4-Bromofluorobenzene		111 %	45-146		"	"	"	"	

Summit Scientific

The results in this report apply to the samples analyzed in accordance with the chain of custody document. This analytical report must be reproduced in its entirety.





LT Environmental, Inc.  
4600 West 60th Avenue  
Arvada CO, 80003

Project: KMG - Gabel Adam GU #1/ Sutton Founders #1  
Project Number: KMG 08373  
Project Manager: John Cocroft

Reported:  
08/28/13 14:42

**MW05R**  
**R308252-08 (Water)**

**Summit Scientific**

**Volatile Organic Compounds by EPA Method 8260B**

Date Sampled: 08/23/13 13:30

Analyte	Result	Reporting Limit	Units	Dilution	Batch	Prepared	Analyzed	Method	Notes
Benzene	ND	1.0	ug/l	1	3082707	08/27/13	08/28/13	EPA 8260B	
Toluene	ND	1.0	"	"	"	"	"	"	
Ethylbenzene	ND	1.0	"	"	"	"	"	"	
Xylenes (total)	ND	1.0	"	"	"	"	"	"	

Date Sampled: 08/23/13 13:30

Analyte	Result	Reporting Limit	Units	Dilution	Batch	Prepared	Analyzed	Method	Notes
Surrogate: 1,2-Dichloroethane-d4		111 %	37-154		"	"	"	"	
Surrogate: Toluene-d8		105 %	45-149		"	"	"	"	
Surrogate: 4-Bromofluorobenzene		113 %	45-146		"	"	"	"	

Summit Scientific

The results in this report apply to the samples analyzed in accordance with the chain of custody document. This analytical report must be reproduced in its entirety.

LT Environmental, Inc.  
4600 West 60th Avenue  
Arvada CO, 80003

Project: KMG - Gabel Adam GU #1/ Sutton Founders #1  
Project Number: KMG 08373  
Project Manager: John Cocroft

Reported:  
08/28/13 14:42

**Volatile Organic Compounds by EPA Method 8260B - Quality Control**  
**Summit Scientific**

Analyte	Reporting			Spike	Source		%REC		RPD	
	Result	Limit	Units	Level	Result	%REC	Limits	RPD	Limit	Notes

**Batch 3082707 - EPA 5030 Water MS**

**Blank (3082707-BLK1)**

Prepared & Analyzed: 08/27/13

Benzene	ND	1.0	ug/l							
Toluene	ND	1.0	"							
Ethylbenzene	ND	1.0	"							
Xylenes (total)	ND	1.0	"							
Surrogate: 1,2-Dichloroethane-d4	14.9		"	13.2		113	37-154			
Surrogate: Toluene-d8	13.9		"	13.3		104	45-149			
Surrogate: 4-Bromofluorobenzene	15.2		"	13.3		114	45-146			

**Blank (3082707-BLK2)**

Prepared & Analyzed: 08/27/13

Benzene	ND	1.0	ug/l							
Toluene	ND	1.0	"							
Ethylbenzene	ND	1.0	"							
Xylenes (total)	ND	1.0	"							
Surrogate: 1,2-Dichloroethane-d4	15.1		"	13.2		114	37-154			
Surrogate: Toluene-d8	13.8		"	13.3		104	45-149			
Surrogate: 4-Bromofluorobenzene	15.5		"	13.3		116	45-146			

**LCS (3082707-BS1)**

Prepared & Analyzed: 08/27/13

Benzene	31.4	1.0	ug/l	33.3		94.3	51-132			
Toluene	37.1	1.0	"	33.3		111	51-138			
Ethylbenzene	40.0	1.0	"	33.3		120	58-146			
m,p-Xylene	74.1	2.0	"	66.7		111	57-144			
o-Xylene	38.4	1.0	"	33.3		115	53-146			
Surrogate: 1,2-Dichloroethane-d4	14.6		"	13.2		110	37-154			
Surrogate: Toluene-d8	13.5		"	13.3		101	45-149			
Surrogate: 4-Bromofluorobenzene	14.6		"	13.3		110	45-146			

**LCS (3082707-BS2)**

Prepared & Analyzed: 08/27/13

Benzene	31.2	1.0	ug/l	33.3		93.5	51-132			
Toluene	37.5	1.0	"	33.3		112	51-138			
Ethylbenzene	40.5	1.0	"	33.3		121	58-146			
m,p-Xylene	74.6	2.0	"	66.7		112	57-144			
o-Xylene	38.6	1.0	"	33.3		116	53-146			
Surrogate: 1,2-Dichloroethane-d4	14.6		"	13.2		110	37-154			
Surrogate: Toluene-d8	13.7		"	13.3		103	45-149			
Surrogate: 4-Bromofluorobenzene	14.6		"	13.3		109	45-146			

Summit Scientific

The results in this report apply to the samples analyzed in accordance with the chain of custody document. This analytical report must be reproduced in its entirety.



LT Environmental, Inc.  
4600 West 60th Avenue  
Arvada CO, 80003

Project: KMG - Gabel Adam GU #1/ Sutton Founders #1

Project Number: KMG 08373  
Project Manager: John Cocroft

Reported:  
08/28/13 14:42

**Volatile Organic Compounds by EPA Method 8260B - Quality Control**  
**Summit Scientific**

Analyte	Reporting			Spike	Source		%REC		RPD	
	Result	Limit	Units	Level	Result	%REC	Limits	RPD	Limit	Notes

**Batch 3082707 - EPA 5030 Water MS**

**LCS Dup (3082707-BSD1)**

Prepared & Analyzed: 08/27/13

Benzene	31.8	1.0	ug/l	33.3		95.3	51-132	1.01	17	
Toluene	37.4	1.0	"	33.3		112	51-138	1.05	17	
Ethylbenzene	41.0	1.0	"	33.3		123	58-146	2.54	16	
m,p-Xylene	75.8	2.0	"	66.7		114	57-144	2.29	16	
o-Xylene	38.8	1.0	"	33.3		116	53-146	1.06	15	
Surrogate: 1,2-Dichloroethane-d4	14.4		"	13.2		109	37-154			
Surrogate: Toluene-d8	13.5		"	13.3		101	45-149			
Surrogate: 4-Bromofluorobenzene	14.4		"	13.3		108	45-146			

**LCS Dup (3082707-BSD2)**

Prepared & Analyzed: 08/27/13

Benzene	31.9	1.0	ug/l	33.3		95.6	51-132	2.22	17	
Toluene	37.4	1.0	"	33.3		112	51-138	0.214	17	
Ethylbenzene	40.8	1.0	"	33.3		122	58-146	0.861	16	
m,p-Xylene	76.5	2.0	"	66.7		115	57-144	2.48	16	
o-Xylene	39.0	1.0	"	33.3		117	53-146	1.03	15	
Surrogate: 1,2-Dichloroethane-d4	14.8		"	13.2		112	37-154			
Surrogate: Toluene-d8	13.7		"	13.3		103	45-149			
Surrogate: 4-Bromofluorobenzene	15.0		"	13.3		112	45-146			

**Matrix Spike (3082707-MS1)**

Source: R308250-01

Prepared & Analyzed: 08/27/13

Benzene	31.7	1.0	ug/l	33.3	ND	95.1	34-141			
Toluene	37.6	1.0	"	33.3	ND	113	27-151			
Ethylbenzene	41.8	1.0	"	33.3	ND	125	29-160			
m,p-Xylene	77.2	2.0	"	66.7	ND	116	20-166			
o-Xylene	39.1	1.0	"	33.3	ND	117	33-159			
Surrogate: 1,2-Dichloroethane-d4	13.5		"	13.2		102	37-154			
Surrogate: Toluene-d8	13.7		"	13.3		103	45-149			
Surrogate: 4-Bromofluorobenzene	14.2		"	13.3		107	45-146			

Summit Scientific

The results in this report apply to the samples analyzed in accordance with the chain of custody document. This analytical report must be reproduced in its entirety.



LT Environmental, Inc.  
4600 West 60th Avenue  
Arvada CO, 80003

Project: KMG - Gabel Adam GU #1/ Sutton Founders #1

Project Number: KMG 08373  
Project Manager: John Cocroft

Reported:  
08/28/13 14:42

**Volatile Organic Compounds by EPA Method 8260B - Quality Control**  
**Summit Scientific**

Analyte	Reporting			Spike	Source		%REC		RPD	
	Result	Limit	Units	Level	Result	%REC	Limits	RPD	Limit	Notes

**Batch 3082707 - EPA 5030 Water MS**

Matrix Spike (3082707-MS2)		Source: R308250-02			Prepared & Analyzed: 08/27/13					
Benzene	32.3	1.0	ug/l	33.3	ND	96.8	34-141			
Toluene	37.6	1.0	"	33.3	ND	113	27-151			
Ethylbenzene	41.3	1.0	"	33.3	ND	124	29-160			
m,p-Xylene	76.7	2.0	"	66.7	ND	115	20-166			
o-Xylene	38.7	1.0	"	33.3	ND	116	33-159			
Surrogate: 1,2-Dichloroethane-d4	13.4		"	13.2		102	37-154			
Surrogate: Toluene-d8	13.7		"	13.3		103	45-149			
Surrogate: 4-Bromofluorobenzene	14.2		"	13.3		107	45-146			

Matrix Spike Dup (3082707-MSD1)		Source: R308250-01			Prepared & Analyzed: 08/27/13					
Benzene	32.1	1.0	ug/l	33.3	ND	96.4	34-141	1.38	32	
Toluene	38.3	1.0	"	33.3	ND	115	27-151	2.00	25	
Ethylbenzene	42.5	1.0	"	33.3	ND	128	29-160	1.85	50	
m,p-Xylene	78.3	2.0	"	66.7	ND	117	20-166	1.35	36	
o-Xylene	39.6	1.0	"	33.3	ND	119	33-159	1.40	26	
Surrogate: 1,2-Dichloroethane-d4	13.7		"	13.2		104	37-154			
Surrogate: Toluene-d8	13.5		"	13.3		101	45-149			
Surrogate: 4-Bromofluorobenzene	14.4		"	13.3		108	45-146			

Matrix Spike Dup (3082707-MSD2)		Source: R308250-02			Prepared & Analyzed: 08/27/13					
Benzene	32.2	1.0	ug/l	33.3	ND	96.7	34-141	0.124	32	
Toluene	37.8	1.0	"	33.3	ND	114	27-151	0.689	25	
Ethylbenzene	41.9	1.0	"	33.3	ND	126	29-160	1.47	50	
m,p-Xylene	78.1	2.0	"	66.7	ND	117	20-166	1.76	36	
o-Xylene	39.1	1.0	"	33.3	ND	117	33-159	1.21	26	
Surrogate: 1,2-Dichloroethane-d4	13.6		"	13.2		102	37-154			
Surrogate: Toluene-d8	13.7		"	13.3		103	45-149			
Surrogate: 4-Bromofluorobenzene	14.3		"	13.3		107	45-146			

Summit Scientific

The results in this report apply to the samples analyzed in accordance with the chain of custody document. This analytical report must be reproduced in its entirety.



S<sub>2</sub>

LT Environmental, Inc.  
4600 West 60th Avenue  
Arvada CO, 80003

Project: KMG - Gabel Adam GU #1/ Sutton Founders #1

Project Number: KMG 08373  
Project Manager: John Cocroft

**Reported:**  
08/28/13 14:42

### Notes and Definitions

DET Analyte DETECTED  
ND Analyte NOT DETECTED at or above the reporting limit  
NR Not Reported  
dry Sample results reported on a dry weight basis  
RPD Relative Percent Difference

Summit Scientific

*The results in this report apply to the samples analyzed in accordance with the chain of custody document. This analytical report must be reproduced in its entirety.*



November 18, 2013

LT Environmental, Inc.

John Cocroft

4600 West 60th Avenue

Arvada

CO 80003

---

**Project Name - KMG - Gabel Adam GU #1/ Sutton Founders #1    Project Number - KMG08373**

Attached are you analytical results for KMG - Gabel Adam GU #1/ Sutton Founders #1 received by Origins Laboratory, Inc. November 12, 2013. This project is associated with Origins project number X311097-01.

The analytical results in the following report were analyzed under the guidelines of EPA Methods. These methods are identified as follows; "SW" are defined in SW-846, "EPA" are defined in 40CFR part 136 and "SM" are defined in the most current revision of Standard Methods For the Examination of Water and Wastewater.

The analytical results apply specifically to the samples and analyses specified per the attached Chain of Custody. As such, this report shall not be reproduced except in full, without the written approval of Origin's laboratory.

Unless otherwise noted, the analytical results for all soil samples are reported on a wet weight basis. All analytical analyses were performed under NELAP guidelines unless noted by a data qualifier.

Any holding time exceedances, deviations from the method specifications or deviations from Origins Laboratory's Standard Operating Procedures are outlined in the case narrative.

Thank you for selecting Origins for your analytical needs. Please contact us with any questions concerning this report, or if we can help with anything at all.

Origins Laboratory, Inc.  
303.433.1322  
o-squad@oelabinc.com



LT Environmental, Inc.

4600 West 60th Avenue

Arvada CO 80003

John Cocroft

Project Number: KMG08373

Project: KMG - Gabel Adam GU #1/ Sutton  
Founders #1

## CROSS REFERENCE REPORT

Sample ID	Laboratory ID	Matrix	Date Sampled	Date Received
MW03	X311097-01	Water	November 12, 2013 14:45	11/12/2013 17:00
MW04	X311097-02	Water	November 12, 2013 14:35	11/12/2013 17:00
MW05R	X311097-03	Water	November 12, 2013 14:50	11/12/2013 17:00
MW07	X311097-04	Water	November 12, 2013 14:30	11/12/2013 17:00
MW08	X311097-05	Water	November 12, 2013 14:20	11/12/2013 17:00

Origins Laboratory, Inc.



Noelle E Doyle, President

*The results in this report apply to the samples analyzed in accordance with the chain of custody document. This analytical report must be reproduced in its entirety.*

LT Environmental, Inc.  
4600 West 60th Avenue  
Arvada CO 80003

John Cocroft  
Project Number: KMG08373  
Project: KMG - Gabel Adam GU #1/ Sutton  
Founders #1

ORIGINS  
LABORATORY, INC

X311097

1725 Elk Place, Denver, CO 80211  
Laboratory # - 303.433.1322

Client: LT Environmental, Inc.		Project Manager: John Cocroft		Project Number: KMG08373	
Project: Anadarko - Gabel Adam GU #1/ Sutton Four		Sample Date		Sample Time	
Number	Sample Identification	Matrix	Sample Date	Sample Time	Analyses
01-001	MW03	Water	11-12-13	1445 CW	3 BTEX by EPA 8260C
02-001	MW04	Water	11-12-13	1435	3 BTEX by EPA 8260C
03-001	MW05R	Water	11-12-13	1450	3 BTEX by EPA 8260C
04-001	<del>MW06</del> NOT SAMPLED	Water	11-12-13	1450	3 BTEX by EPA 8260C
05-001	MW07	Water	11-12-13	1430 CW	3 BTEX by EPA 8260C
06-001	MW08	Water	11-12-13	1420 CW	3 BTEX by EPA 8260C
07-001	<del>MW09</del> NOT SAMPLED	Water	11-12-13	1420	3 BTEX by EPA 8260C
08-001	<del>MW10</del> NOT SAMPLED	Water	11-12-13	1420	3 BTEX by EPA 8260C

Temperature on Receipt:  
Turn Around Time:  
Same Day: ☐ 72-hr: ☒  
24-hr: ☐ Standard: ☐  
48-hr: ☐

Relinquished By: \_\_\_\_\_ Date / Time: \_\_\_\_\_  
Received By: \_\_\_\_\_ Date / Time: \_\_\_\_\_

Relinquished By: W 11-12-13 1700  
Date / Time: 11/12/13 1700  
Received By: \_\_\_\_\_ Date / Time: \_\_\_\_\_

Origins Laboratory, Inc.

Noelle E Doyle, President

The results in this report apply to the samples analyzed in accordance with the chain of custody document. This analytical report must be reproduced in its entirety.



LT Environmental, Inc.

4600 West 60th Avenue

Arvada CO 80003

John Cocroft

Project Number: KMG08373

Project: KMG - Gabel Adam GU #1/ Sutton Founders #1

Origins Laboratory

F-012207-01-R1  
Effective Date: 01/09/12

## Sample Receipt Checklist

Origins Work Order: X311097

Client: LTE

Client Project ID: Arvada - Gabel Adam

Checklist Completed by: Jeff Smith

Shipped Via: Pick Up  
(UPS, FedEx, Hand Delivered, Pick up, etc.)

Date/time completed: 11/12/13 17:27

Airbill #: NA

Matrix(s) Received: (Check all that apply): Soil/Solid ☒ Water ☐ Other: (Describe)

Cooler Number/Temperature: 10.1 °C 1 °C 1 °C 1 °C

Thermometer ID: 200

Requirement Description	Yes	No	N/A	Comments (if any)
If samples require cooling, was the temperature between 0°C to ≤ 6°C <sup>(1)</sup> ?	<input checked="" type="checkbox"/>			
Is there ice present (document if blue ice is used)	<input checked="" type="checkbox"/>			
Are custody seals present on cooler? (if so, document in comments if they are signed and dated, broken or intact)		<input checked="" type="checkbox"/>		
Are custody seals present on each sample container? (if so, document in comments if they are signed and dated, broken or intact)		<input checked="" type="checkbox"/>		
Were all samples received intact <sup>(1)</sup> ?	<input checked="" type="checkbox"/>			
Was adequate sample volume provided <sup>(1)</sup> ?	<input checked="" type="checkbox"/>			
Are short holding time analytes or samples with HTs due within 48 hours present <sup>(1)</sup> ?		<input checked="" type="checkbox"/>		
Is a chain-of-custody (COC) present and filled out completely <sup>(1)</sup> ?	<input checked="" type="checkbox"/>			
Does the COC agree with the number and type of sample bottles received <sup>(1)</sup> ?	<input checked="" type="checkbox"/>			
Do the sample IDs on the bottle labels match the COC <sup>(1)</sup> ?	<input checked="" type="checkbox"/>			
Is the COC properly relinquished by the client with date and time recorded <sup>(1)</sup> ?	<input checked="" type="checkbox"/>			
For volatiles in water – is there headspace (> ¼ inch bubble) present? If yes, contact client and note in narrative.		<input checked="" type="checkbox"/>		
Are samples preserved that require preservation and was it checked <sup>(1)</sup> ? (note ID of confirmation instrument used in comments) / (preservation is not confirmed for subcontracted analyses in order to insure sample integrity) (pH < 2 for samples preserved with HNO <sub>3</sub> , HCl, H <sub>2</sub> SO <sub>4</sub> ) / (pH > 10 for samples preserved with NaAsO <sub>2</sub> •NaOH, ZnAc•NaOH)	<input checked="" type="checkbox"/>			HCL
Additional Comments (if any):				

<sup>(1)</sup> If NO, then contact the client before proceeding with analysis and note date/time and person contacted as well as the corrective action to in the additional comments (above) and the Case narrative.

Reviewed by (Project Manager)

Date/Time Reviewed: 11/15/13

Origins Laboratory, Inc.

Noelle E Doyle, President

The results in this report apply to the samples analyzed in accordance with the chain of custody document. This analytical report must be reproduced in its entirety.

LT Environmental, Inc.  
4600 West 60th Avenue  
Arvada CO 80003

John Cocroft  
Project Number: KMG08373  
Project: KMG - Gabel Adam GU #1/ Sutton  
Founders #1

MW03

11/12/2013 2:45:00PM

Analyte	Result	Reporting Limit	Units	Dilution	Batch	Prepared	Analyzed	Notes
---------	--------	--------------------	-------	----------	-------	----------	----------	-------

Origins Laboratory, Inc.  
X311097-01 (Water)

## BTEX by EPA 8260C

Benzene	ND	1.0	ug/L	1	3K12008	11/14/2013	11/14/2013
Toluene	ND	1.0	"	"	"	"	"
Ethylbenzene	ND	1.0	"	"	"	"	"
Xylenes, total	ND	1.0	"	"	"	"	"

Surrogate: 1,2-Dichloroethane-d4	97.3 %	84-121	"	"	"
Surrogate: Toluene-d8	96.1 %	85-115	"	"	"
Surrogate: 4-Bromofluorobenzene	97.8 %	84-114	"	"	"

Origins Laboratory, Inc.



Noelle E Doyle, President

*The results in this report apply to the samples analyzed in accordance with the chain of custody document. This analytical report must be reproduced in its entirety.*

LT Environmental, Inc.  
4600 West 60th Avenue  
Arvada CO 80003

John Cocroft  
Project Number: KMG08373  
Project: KMG - Gabel Adam GU #1/ Sutton  
Founders #1

MW04

11/12/2013 2:35:00PM

Analyte	Result	Reporting Limit	Units	Dilution	Batch	Prepared	Analyzed	Notes
---------	--------	--------------------	-------	----------	-------	----------	----------	-------

Origins Laboratory, Inc.  
X311097-02 (Water)

## BTEX by EPA 8260C

Benzene	ND	1.0	ug/L	1	3K12008	11/14/2013	11/14/2013	
Toluene	ND	1.0	"	"	"	"	"	
Ethylbenzene	ND	1.0	"	"	"	"	"	
Xylenes, total	ND	1.0	"	"	"	"	"	

Surrogate: 1,2-Dichloroethane-d4	96.9 %	84-121			"	"	"	
Surrogate: Toluene-d8	96.5 %	85-115			"	"	"	
Surrogate: 4-Bromofluorobenzene	97.9 %	84-114			"	"	"	

Origins Laboratory, Inc.



Noelle E Doyle, President

*The results in this report apply to the samples analyzed in accordance with the chain of custody document. This analytical report must be reproduced in its entirety.*

LT Environmental, Inc.  
4600 West 60th Avenue  
Arvada CO 80003

John Cocroft  
Project Number: KMG08373  
Project: KMG - Gabel Adam GU #1/ Sutton  
Founders #1

MW05R

11/12/2013 2:50:00PM

Analyte	Result	Reporting Limit	Units	Dilution	Batch	Prepared	Analyzed	Notes
---------	--------	--------------------	-------	----------	-------	----------	----------	-------

Origins Laboratory, Inc.  
X311097-03 (Water)

## BTEX by EPA 8260C

Benzene	ND	1.0	ug/L	1	3K12008	11/14/2013	11/14/2013	
Toluene	ND	1.0	"	"	"	"	"	
Ethylbenzene	ND	1.0	"	"	"	"	"	
Xylenes, total	ND	1.0	"	"	"	"	"	

Surrogate: 1,2-Dichloroethane-d4	96.4 %	84-121			"	"	"	
Surrogate: Toluene-d8	97.1 %	85-115			"	"	"	
Surrogate: 4-Bromofluorobenzene	98.0 %	84-114			"	"	"	

Origins Laboratory, Inc.



Noelle E Doyle, President

*The results in this report apply to the samples analyzed in accordance with the chain of custody document. This analytical report must be reproduced in its entirety.*



LT Environmental, Inc.  
4600 West 60th Avenue  
Arvada CO 80003

John Cocroft  
Project Number: KMG08373  
Project: KMG - Gabel Adam GU #1/ Sutton  
Founders #1

MW07

11/12/2013 2:30:00PM

Analyte	Result	Reporting Limit	Units	Dilution	Batch	Prepared	Analyzed	Notes
---------	--------	--------------------	-------	----------	-------	----------	----------	-------

Origins Laboratory, Inc.  
X311097-04 (Water)

## BTEX by EPA 8260C

Benzene	2.69	1.0	ug/L	1	3K12008	11/14/2013	11/14/2013
Toluene	ND	1.0	"	"	"	"	"
Ethylbenzene	ND	1.0	"	"	"	"	"
Xylenes, total	ND	1.0	"	"	"	"	"

Surrogate: 1,2-Dichloroethane-d4	98.9 %	84-121			"	"	"
Surrogate: Toluene-d8	98.9 %	85-115			"	"	"
Surrogate: 4-Bromofluorobenzene	99.1 %	84-114			"	"	"

Origins Laboratory, Inc.



Noelle E Doyle, President

*The results in this report apply to the samples analyzed in accordance with the chain of custody document. This analytical report must be reproduced in its entirety.*

LT Environmental, Inc.  
4600 West 60th Avenue  
Arvada CO 80003

John Cocroft  
Project Number: KMG08373  
Project: KMG - Gabel Adam GU #1/ Sutton  
Founders #1

MW08

11/12/2013 2:20:00PM

Analyte	Result	Reporting Limit	Units	Dilution	Batch	Prepared	Analyzed	Notes
---------	--------	--------------------	-------	----------	-------	----------	----------	-------

Origins Laboratory, Inc.  
X311097-05 (Water)

## BTEX by EPA 8260C

Benzene	ND	1.0	ug/L	1	3K12008	11/14/2013	11/14/2013	
Toluene	ND	1.0	"	"	"	"	"	
Ethylbenzene	ND	1.0	"	"	"	"	"	
Xylenes, total	ND	1.0	"	"	"	"	"	

Surrogate: 1,2-Dichloroethane-d4	98.6 %	84-121			"	"	"	
Surrogate: Toluene-d8	97.2 %	85-115			"	"	"	
Surrogate: 4-Bromofluorobenzene	98.9 %	84-114			"	"	"	

Origins Laboratory, Inc.



Noelle E Doyle, President

*The results in this report apply to the samples analyzed in accordance with the chain of custody document. This analytical report must be reproduced in its entirety.*

LT Environmental, Inc.  
4600 West 60th Avenue  
Arvada CO 80003

John Cocroft  
Project Number: KMG08373  
Project: KMG - Gabel Adam GU #1/ Sutton  
Founders #1

**Volatile Organic Compounds by GC/MS SW846 8260C - Quality Control**  
**Origins Laboratory, Inc.**

Analyte	Result	Reporting Limit	Units	Spike Level	Source Result	%REC	%REC Limits	RPD	RPD Limit	Notes
---------	--------	-----------------	-------	-------------	---------------	------	-------------	-----	-----------	-------

Batch 3K12008 - EPA 5030B (Water)

Blank (3K12008-BLK1)

Prepared: 11/12/2013 Analyzed: 11/14/2013

Benzene	ND	1.0	ug/L							
Toluene	ND	1.0	"							
Ethylbenzene	ND	1.0	"							
Xylenes, total	ND	1.0	"							
Surrogate: 1,2-Dichloroethane-d4	61		"	62.5		97.1	84-121			
Surrogate: Toluene-d8	61		"	62.5		97.1	85-115			
Surrogate: 4-Bromofluorobenzene	62		"	62.5		99.0	84-114			

Origins Laboratory, Inc.



Noelle E Doyle, President

*The results in this report apply to the samples analyzed in accordance with the chain of custody document. This analytical report must be reproduced in its entirety.*

LT Environmental, Inc.  
4600 West 60th Avenue  
Arvada CO 80003

John Cocroft  
Project Number: KMG08373  
Project: KMG - Gabel Adam GU #1/ Sutton  
Founders #1

**Volatile Organic Compounds by GC/MS SW846 8260C - Quality Control**  
**Origins Laboratory, Inc.**

Analyte	Result	Reporting Limit	Units	Spike Level	Source Result	%REC	%REC Limits	RPD	RPD Limit	Notes
---------	--------	-----------------	-------	-------------	---------------	------	-------------	-----	-----------	-------

Batch 3K12008 - EPA 5030B (Water)

LCS (3K12008-BS1)

Prepared: 11/12/2013 Analyzed: 11/14/2013

Benzene	42.2	1.0	ug/L	50.0		84.3	74-130			
Toluene	40.7	1.0	"	50.0		81.4	76-128			
Ethylbenzene	41.0	1.0	"	50.0		82.1	78-130			
m,p-Xylene	83.2	2.0	"	100		83.2	75-134			
o-Xylene	41.4	1.0	"	50.0		82.8	76-129			
Surrogate: 1,2-Dichloroethane-d4	57		"	62.5		90.7	84-121			
Surrogate: Toluene-d8	60		"	62.5		96.7	85-115			
Surrogate: 4-Bromofluorobenzene	62		"	62.5		99.1	84-114			

Origins Laboratory, Inc.



Noelle E Doyle, President

*The results in this report apply to the samples analyzed in accordance with the chain of custody document. This analytical report must be reproduced in its entirety.*



LT Environmental, Inc.  
4600 West 60th Avenue  
Arvada CO 80003

John Cocroft  
Project Number: KMG08373  
Project: KMG - Gabel Adam GU #1/ Sutton  
Founders #1

**Volatile Organic Compounds by GC/MS SW846 8260C - Quality Control**  
**Origins Laboratory, Inc.**

Analyte	Result	Reporting Limit	Units	Spike Level	Source Result	%REC	%REC Limits	RPD	RPD Limit	Notes
---------	--------	-----------------	-------	-------------	---------------	------	-------------	-----	-----------	-------

Batch 3K12008 - EPA 5030B (Water)

Matrix Spike (3K12008-MS1)		Source: X311097-01			Prepared: 11/12/2013 Analyzed: 11/14/2013					
Benzene	43.8	1.0	ug/L	50.0	ND	87.5	74-130			
Toluene	42.2	1.0	"	50.0	ND	84.4	73-131			
Ethylbenzene	42.9	1.0	"	50.0	ND	85.8	76-132			
m,p-Xylene	86.5	2.0	"	100	ND	86.5	69-139			
o-Xylene	41.9	1.0	"	50.0	ND	83.8	74-131			
Surrogate: 1,2-Dichloroethane-d4	58		"	62.5		93.4	84-121			
Surrogate: Toluene-d8	60		"	62.5		96.3	85-115			
Surrogate: 4-Bromofluorobenzene	62		"	62.5		96.6	84-114			

Origins Laboratory, Inc.



Noelle E Doyle, President

*The results in this report apply to the samples analyzed in accordance with the chain of custody document. This analytical report must be reproduced in its entirety.*

LT Environmental, Inc.  
4600 West 60th Avenue  
Arvada CO 80003

John Cocroft  
Project Number: KMG08373  
Project: KMG - Gabel Adam GU #1/ Sutton  
Founders #1

**Volatile Organic Compounds by GC/MS SW846 8260C - Quality Control**  
**Origins Laboratory, Inc.**

Analyte	Result	Reporting Limit	Units	Spike Level	Source Result	%REC	%REC Limits	RPD	RPD Limit	Notes
---------	--------	-----------------	-------	-------------	---------------	------	-------------	-----	-----------	-------

Batch 3K12008 - EPA 5030B (Water)

Matrix Spike Dup (3K12008-MSD1)		Source: X311097-01			Prepared: 11/12/2013 Analyzed: 11/14/2013					
Benzene	45.3	1.0	ug/L	50.0	ND	90.6	74-130	3.50	20	
Toluene	43.6	1.0	"	50.0	ND	87.2	73-131	3.29	20	
Ethylbenzene	44.7	1.0	"	50.0	ND	89.4	76-132	4.15	20	
m,p-Xylene	90.0	2.0	"	100	ND	90.0	69-139	3.99	20	
o-Xylene	43.6	1.0	"	50.0	ND	87.3	74-131	4.14	20	
Surrogate: 1,2-Dichloroethane-d4	56		"	62.5		93.3	84-121			
Surrogate: Toluene-d8	61		"	62.5		97.5	85-115			
Surrogate: 4-Bromofluorobenzene	61		"	62.5		96.0	84-114			

Origins Laboratory, Inc.



Noelle E Doyle, President

*The results in this report apply to the samples analyzed in accordance with the chain of custody document. This analytical report must be reproduced in its entirety.*

LT Environmental, Inc.  
4600 West 60th Avenue  
Arvada CO 80003

John Cocroft  
Project Number: KMG08373  
Project: KMG - Gabel Adam GU #1/ Sutton  
Founders #1

### Notes and Definitions

ND Analyte NOT DETECTED at or above the reporting limit  
RPD Relative Percent Difference

Origins Laboratory, Inc.



Noelle E Doyle, President

*The results in this report apply to the samples analyzed in accordance with the chain of custody document. This analytical report must be reproduced in its entirety.*

February 07, 2014

LT Environmental, Inc.

John Cocroft

4600 West 60th Avenue

Arvada

CO 80003

**Project Name - KMG - Gabel Adam GU #1/ Sutton  
Founders #1**

**Project Number - KMG08373**

Attached are your analytical results for KMG - Gabel Adam GU #1/ Sutton Founders #1 received by Origins Laboratory, Inc. February 06, 2014. This project is associated with Origins project number X402053-01.

The analytical results in the following report were analyzed under the guidelines of EPA Methods. These methods are identified as follows; "SW" are defined in SW-846, "EPA" are defined in 40CFR part 136 and "SM" are defined in the most current revision of Standard Methods For the Examination of Water and Wastewater.

The analytical results apply specifically to the samples and analyses specified per the attached Chain of Custody. As such, this report shall not be reproduced except in full, without the written approval of Origin's laboratory.

Unless otherwise noted, the analytical results for all soil samples are reported on a wet weight basis. All analytical analyses were performed under NELAP guidelines unless noted by a data qualifier.

Any holding time exceedances, deviations from the method specifications or deviations from Origins Laboratory's Standard Operating Procedures are outlined in the case narrative.

Thank you for selecting Origins for your analytical needs. Please contact us with any questions concerning this report, or if we can help with anything at all.





LT Environmental, Inc.  
4600 West 60th Avenue  
Arvada CO 80003

John Cocroft  
Project Number: KMG08373  
Project: KMG - Gabel Adam GU #1/ Sutton  
Founders #1

## CROSS REFERENCE REPORT

Sample ID	Laboratory ID	Matrix	Date Sampled	Date Received
MW03	X402053-01	Water	February 6, 2014 12:50	02/06/2014 17:00
MW04	X402053-02	Water	February 6, 2014 12:40	02/06/2014 17:00
MW05R	X402053-03	Water	February 6, 2014 13:00	02/06/2014 17:00
MW07	X402053-04	Water	February 6, 2014 13:10	02/06/2014 17:00
MW08	X402053-05	Water	February 6, 2014 13:20	02/06/2014 17:00

Origins Laboratory, Inc.



Noelle Doyle Mathis, President

*The results in this report apply to the samples analyzed in accordance with the chain of custody document. This analytical report must be reproduced in its entirety.*

LT Environmental, Inc.  
4600 West 60th Avenue  
Arvada CO 80003

John Cocroft  
Project Number: KMG08373  
Project: KMG - Gabel Adam GU #1/ Sutton  
Founders #1

X402053

ORIGINS  
LABORATORY, INC

1725 Elk Place, Denver, CO 80211  
Laboratory # - 303.433.1322

Client: LT Environmental, Inc.			Project Manager: John Cocroft		
Project: KMG - Gabel Adam GU #1/ Sutton Founders			Project Number: KMG08373		
Number	Sample Identification	Matrix	Sample Date	Sample Time	Sampled By
01-001	MM03	Water	2/14/14	1250	AH
02-001	MM04	Water	2/14/14	1240	I
03-001	MM05R	Water	2/14/14	1300	I
04-001	MM06	Water	2/14/14	1310	I
05-001	MM07	Water	2/14/14	1320	I
06-001	MM08	Water	2/14/14	1320	I
		Container	Qty	Analyses	
		01_40mL Amber VOA Vial - HCL	3	BTEX by EPA 8260C	
		UNPRESERVED	3	BTEX by EPA 8260C	
		01_40mL Amber VOA Vial - HCL	3	BTEX by EPA 8260C	
		UNPRESERVED	3	BTEX by EPA 8260C	
		01_40mL Amber VOA Vial - HCL	3	BTEX by EPA 8260C	
		UNPRESERVED	3	BTEX by EPA 8260C	
		01_40mL Amber VOA Vial - HCL	3	BTEX by EPA 8260C	
		UNPRESERVED	3	BTEX by EPA 8260C	
		01_40mL Amber VOA Vial - HCL	3	BTEX by EPA 8260C	
		UNPRESERVED	3	BTEX by EPA 8260C	

Temperature on Receipt: ☐ 72-hr ☒ Standard  
Turn Around Time: ☐ Same Day ☐ 24-hr

Relinquished By: \_\_\_\_\_ Date / Time: \_\_\_\_\_  
Received By: \_\_\_\_\_ Date / Time: \_\_\_\_\_

2/6/14 1700  
Relinquished By: \_\_\_\_\_ Date / Time: \_\_\_\_\_  
Received By: \_\_\_\_\_ Date / Time: \_\_\_\_\_

Origins Laboratory, Inc.

Noelle Doyle Mathis, President

The results in this report apply to the samples analyzed in accordance with the chain of custody document. This analytical report must be reproduced in its entirety.

LT Environmental, Inc.  
4600 West 60th Avenue  
Arvada CO 80003

John Cocroft  
Project Number: KMG08373  
Project: KMG - Gabel Adam GU #1/ Sutton  
Founders #1

Origins Laboratory

F-012207-01-R1  
Effective Date: 01/09/12

## Sample Receipt Checklist

Origins Work Order: X402053

Client: LTE

Client Project ID: \_\_\_\_\_

Checklist Completed by: Jeff Smith

Shipped Via: Pick Up  
(UPS, FedEx, Hand Delivered, Pick-up, etc.)

Date/time completed: 2/6/14

Airbill #: N/A

Matrix(s) Received (Check all that apply): \_\_\_\_\_ Soil/Solid \_\_\_\_\_ Water \_\_\_\_\_ Other: \_\_\_\_\_  
(Describe)

Cooler Number/Temperature: 10.7 °C / \_\_\_\_\_ °C / \_\_\_\_\_ °C / \_\_\_\_\_ °C

Thermometer ID: T002

Requirement Description	Yes	No	N/A	Comments (if any)
If samples require cooling, was the temperature between 0°C to ≤ 6°C <sup>(1)</sup> ?	X			
Is there ice present (document if blue ice is used)	X			
Are custody seals present on cooler? (if so, document in comments if they are signed and dated, broken or intact)		X		
Are custody seals present on each sample container? (if so, document in comments if they are signed and dated, broken or intact)		X		
Were all samples received intact <sup>(1)</sup> ?	X			
Was adequate sample volume provided <sup>(1)</sup> ?	X			
Are short holding time analytes or samples with HTs due within 48 hours present <sup>(1)</sup> ?				
Is a chain-of-custody (COC) present and filled out completely <sup>(1)</sup> ?	X			
Does the COC agree with the number and type of sample bottles received <sup>(1)</sup> ?	X			
Do the sample IDs on the bottle labels match the COC <sup>(1)</sup> ?	X			
Is the COC properly relinquished by the client with date and time recorded <sup>(1)</sup> ?	X			
For volatiles in water – is there headspace (> ¼ inch bubble) present? If yes, contact client and note in narrative.				
Are samples preserved that require preservation and was it checked <sup>(1)</sup> ? (note ID of confirmation instrument used in comments) / (preservation is not confirmed for subcontracted analyses in order to insure sample integrity)/(pH <2 for samples preserved with HNO <sub>3</sub> , HCL, H <sub>2</sub> SO <sub>4</sub> ) / (pH >10 for samples preserved with NaAsO <sub>2</sub> +NaOH, ZnAc+NaOH)				
Additional Comments (if any):				

<sup>(1)</sup> If NO, then contact the client before proceeding with analysis and note date/time and person contacted as well as the corrective action to in the additional comments (above) and the case narrative.

Reviewed by (Project Manager)

02-07-14 1440  
Date/Time Reviewed

Origins Laboratory, Inc.



Noelle Doyle Mathis, President

The results in this report apply to the samples analyzed in accordance with the chain of custody document. This analytical report must be reproduced in its entirety.

LT Environmental, Inc.  
4600 West 60th Avenue  
Arvada CO 80003

John Cocroft  
Project Number: KMG08373  
Project: KMG - Gabel Adam GU #1/ Sutton  
Founders #1

## MW03

2/6/2014 12:50:00PM

Analyte	Result	Reporting Limit	Units	Dilution	Batch	Prepared	Analyzed	Notes
---------	--------	-----------------	-------	----------	-------	----------	----------	-------

## Origins Laboratory, Inc. X402053-01 (Water)

### BTEX by EPA 8260C

Benzene	ND	1.0	ug/L	1	4B06011	02/06/2014	02/06/2014
Toluene	ND	1.0	"	"	"	"	"
Ethylbenzene	ND	1.0	"	"	"	"	"
Xylenes, total	ND	1.0	"	"	"	"	"
Surrogate: 1,2-Dichloroethane-d4	104 %	84-121			"	"	02/07/2014
Surrogate: Toluene-d8	98.9 %	85-115			"	"	"
Surrogate: 4-Bromofluorobenzene	99.5 %	84-114			"	"	"

Origins Laboratory, Inc.



Noelle Doyle Mathis, President

The results in this report apply to the samples analyzed in accordance with the chain of custody document. This analytical report must be reproduced in its entirety.



LT Environmental, Inc.  
4600 West 60th Avenue  
Arvada CO 80003

John Cocroft  
Project Number: KMG08373  
Project: KMG - Gabel Adam GU #1/ Sutton  
Founders #1

MW04

2/6/2014 12:40:00PM

Analyte	Result	Reporting Limit	Units	Dilution	Batch	Prepared	Analyzed	Notes
---------	--------	--------------------	-------	----------	-------	----------	----------	-------

Origins Laboratory, Inc.  
X402053-02 (Water)

**BTEX by EPA 8260C**

Benzene	ND	1.0	ug/L	1	4B06011	02/06/2014	02/07/2014
Toluene	ND	1.0	"	"	"	"	"
Ethylbenzene	ND	1.0	"	"	"	"	"
Xylenes, total	ND	3.0	"	"	"	"	"
Surrogate: 1,2-Dichloroethane-d4	96.8 %	84-121			"	"	"
Surrogate: Toluene-d8	98.8 %	85-115			"	"	"
Surrogate: 4-Bromofluorobenzene	97.3 %	84-114			"	"	"

Origins Laboratory, Inc.



Noelle Doyle Mathis, President

The results in this report apply to the samples analyzed in accordance with the chain of custody document. This analytical report must be reproduced in its entirety.

LT Environmental, Inc.  
4600 West 60th Avenue  
Arvada CO 80003

John Cocroft  
Project Number: KMG08373  
Project: KMG - Gabel Adam GU #1/ Sutton  
Founders #1

MW05R

2/6/2014 1:00:00PM

Analyte	Result	Reporting Limit	Units	Dilution	Batch	Prepared	Analyzed	Notes
---------	--------	--------------------	-------	----------	-------	----------	----------	-------

Origins Laboratory, Inc.  
X402053-03 (Water)

## BTEX by EPA 8260C

Benzene	ND	1.0	ug/L	1	4B06011	02/06/2014	02/06/2014
Toluene	ND	1.0	"	"	"	"	"
Ethylbenzene	ND	1.0	"	"	"	"	"
Xylenes, total	ND	1.0	"	"	"	"	"

Surrogate: 1,2-Dichloroethane-d4	103 %	84-121			"	"	"
Surrogate: Toluene-d8	105 %	85-115			"	"	"
Surrogate: 4-Bromofluorobenzene	95.5 %	84-114			"	"	"

Origins Laboratory, Inc.



Noelle Doyle Mathis, President

The results in this report apply to the samples analyzed in accordance with the chain of custody document. This analytical report must be reproduced in its entirety.

LT Environmental, Inc.  
4600 West 60th Avenue  
Arvada CO 80003

John Cocroft  
Project Number: KMG08373  
Project: KMG - Gabel Adam GU #1/ Sutton  
Founders #1

MW07

2/6/2014 1:10:00PM

Analyte	Result	Reporting Limit	Units	Dilution	Batch	Prepared	Analyzed	Notes
---------	--------	--------------------	-------	----------	-------	----------	----------	-------

Origins Laboratory, Inc.  
X402053-04 (Water)

## BTEX by EPA 8260C

Benzene	3.97	1.0	ug/L	1	4B06011	02/06/2014	02/06/2014	
Toluene	ND	1.0	"	"	"	"	"	
Ethylbenzene	ND	1.0	"	"	"	"	"	
Xylenes, total	ND	1.0	"	"	"	"	"	

Surrogate: 1,2-Dichloroethane-d4	99.6 %	84-121			"	"	"	
Surrogate: Toluene-d8	98.1 %	85-115			"	"	"	
Surrogate: 4-Bromofluorobenzene	96.9 %	84-114			"	"	"	

Origins Laboratory, Inc.



Noelle Doyle Mathis, President

The results in this report apply to the samples analyzed in accordance with the chain of custody document. This analytical report must be reproduced in its entirety.

LT Environmental, Inc.  
4600 West 60th Avenue  
Arvada CO 80003

John Cocroft  
Project Number: KMG08373  
Project: KMG - Gabel Adam GU #1/ Sutton  
Founders #1

MW08

2/6/2014 1:20:00PM

Analyte	Result	Reporting Limit	Units	Dilution	Batch	Prepared	Analyzed	Notes
---------	--------	--------------------	-------	----------	-------	----------	----------	-------

Origins Laboratory, Inc.  
X402053-05 (Water)

## BTEX by EPA 8260C

Benzene	ND	1.0	ug/L	1	4B06011	02/06/2014	02/06/2014
Toluene	ND	1.0	"	"	"	"	"
Ethylbenzene	ND	1.0	"	"	"	"	"
Xylenes, total	ND	1.0	"	"	"	"	"
Surrogate: 1,2-Dichloroethane-d4	98.4 %	84-121			"	"	"
Surrogate: Toluene-d8	102 %	85-115			"	"	"
Surrogate: 4-Bromofluorobenzene	90.3 %	84-114			"	"	"

Origins Laboratory, Inc.



Noelle Doyle Mathis, President

The results in this report apply to the samples analyzed in accordance with the chain of custody document. This analytical report must be reproduced in its entirety.



LT Environmental, Inc.  
4600 West 60th Avenue  
Arvada CO 80003

John Cocroft  
Project Number: KMG08373  
Project: KMG - Gabel Adam GU #1/ Sutton  
Founders #1

Volatile Organic Compounds by GC/MS SW846 8260C - Quality Control  
Origins Laboratory, Inc.

Analyte	Result	Reporting Limit	Units	Spike Level	Source Result	%REC	%REC Limits	RPD	RPD Limit	Notes
---------	--------	-----------------	-------	-------------	---------------	------	-------------	-----	-----------	-------

Batch 4B06011 - EPA 5030B (Water)

Blank (4B06011-BLK1)

Prepared: 02/06/2014 Analyzed: 02/06/2014

Benzene	ND	1.0	ug/L							
Toluene	ND	1.0	"							
Ethylbenzene	ND	1.0	"							
Xylenes, total	ND	1.0	"							
Surrogate: 1,2-Dichloroethane-d4	65		"	62.5		104	84-121			
Surrogate: Toluene-d8	67		"	62.5		107	85-115			
Surrogate: 4-Bromofluorobenzene	59		"	62.5		94.3	84-114			

Origins Laboratory, Inc.



Noelle Doyle Mathis, President

The results in this report apply to the samples analyzed in accordance with the chain of custody document. This analytical report must be reproduced in its entirety.

LT Environmental, Inc.  
4600 West 60th Avenue  
Arvada CO 80003

John Cocroft  
Project Number: KMG08373  
Project: KMG - Gabel Adam GU #1/ Sutton  
Founders #1

**Volatile Organic Compounds by GC/MS SW846 8260C - Quality Control**  
**Origins Laboratory, Inc.**

Analyte	Result	Reporting Limit	Units	Spike Level	Source Result	%REC	%REC Limits	RPD	RPD Limit	Notes
---------	--------	--------------------	-------	----------------	------------------	------	----------------	-----	--------------	-------

Batch 4B06011 - EPA 5030B (Water)

**LCS (4B06011-BS1)**

Prepared: 02/06/2014 Analyzed: 02/06/2014

Benzene	62.1	1.0	ug/L	50.0	124	74-130
Toluene	61.4	1.0	"	50.0	123	76-128
Ethylbenzene	63.5	1.0	"	50.0	127	78-130
m,p-Xylene	123	2.0	"	100	123	75-134
o-Xylene	62.2	1.0	"	50.0	124	76-129
Surrogate: 1,2-Dichloroethane-d4	62		"	62.5	98.4	84-121
Surrogate: Toluene-d8	64		"	62.5	103	85-115
Surrogate: 4-Bromofluorobenzene	57		"	62.5	92.0	84-114

Origins Laboratory, Inc.



Noelle Doyle Mathis, President

*The results in this report apply to the samples analyzed in accordance with the chain of custody document. This analytical report must be reproduced in its entirety.*

LT Environmental, Inc.  
4600 West 60th Avenue  
Arvada CO 80003

John Cocroft  
Project Number: KMG08373  
Project: KMG - Gabel Adam GU #1/ Sutton  
Founders #1

**Volatile Organic Compounds by GC/MS SW846 8260C - Quality Control**  
**Origins Laboratory, Inc.**

Analyte	Result	Reporting Limit	Units	Spike Level	Source Result	%REC	%REC Limits	RPD	RPD Limit	Notes
---------	--------	-----------------	-------	-------------	---------------	------	-------------	-----	-----------	-------

Batch 4B06011 - EPA 5030B (Water)

Matrix Spike (4B06011-MS1)		Source: X402053-01			Prepared: 02/06/2014 Analyzed: 02/06/2014					
Benzene	62.4	1.0	ug/L	50.0	ND	125	74-130			
Toluene	60.6	1.0	"	50.0	ND	121	73-131			
Ethylbenzene	64.9	1.0	"	50.0	ND	130	76-132			
m,p-Xylene	126	2.0	"	100	ND	126	69-139			
o-Xylene	63.6	1.0	"	50.0	ND	127	74-131			
Surrogate: 1,2-Dichloroethane-d4	59		"	62.5		95.0	84-121			
Surrogate: Toluene-d8	61		"	62.5		97.0	85-115			
Surrogate: 4-Bromofluorobenzene	54		"	62.5		85.7	84-114			

Origins Laboratory, Inc.



Noelle Doyle Mathis, President

*The results in this report apply to the samples analyzed in accordance with the chain of custody document. This analytical report must be reproduced in its entirety.*

LT Environmental, Inc.  
4600 West 60th Avenue  
Arvada CO 80003

John Cocroft  
Project Number: KMG08373  
Project: KMG - Gabel Adam GU #1/ Sutton  
Founders #1

**Volatile Organic Compounds by GC/MS SW846 8260C - Quality Control**  
**Origins Laboratory, Inc.**

Analyte	Result	Reporting Limit	Units	Spike Level	Source Result	%REC	%REC Limits	RPD	RPD Limit	Notes
---------	--------	-----------------	-------	-------------	---------------	------	-------------	-----	-----------	-------

Batch 4B06011 - EPA 5030B (Water)

Matrix Spike Dup (4B06011-MSD1)		Source: X402053-01			Prepared: 02/06/2014 Analyzed: 02/06/2014					
Benzene	58.6	1.0	ug/L	50.0	ND	117	74-130	6.27	20	
Toluene	61.8	1.0	"	50.0	ND	124	73-131	1.90	20	
Ethylbenzene	63.0	1.0	"	50.0	ND	126	76-132	3.08	20	
m,p-Xylene	119	2.0	"	100	ND	119	69-139	5.38	20	
o-Xylene	59.9	1.0	"	50.0	ND	120	74-131	5.96	20	
Surrogate: 1,2-Dichloroethane-d4	60		"	62.5		95.9	84-121			
Surrogate: Toluene-d8	66		"	62.5		105	85-115			
Surrogate: 4-Bromofluorobenzene	58		"	62.5		93.0	84-114			

Origins Laboratory, Inc.



Noelle Doyle Mathis, President

*The results in this report apply to the samples analyzed in accordance with the chain of custody document. This analytical report must be reproduced in its entirety.*



LT Environmental, Inc.  
4600 West 60th Avenue  
Arvada CO 80003

John Cocroft  
Project Number: KMG08373  
Project: KMG - Gabel Adam GU #1/ Sutton  
Founders #1

#### Notes and Definitions

ND Analyte NOT DETECTED at or above the reporting limit  
RPD Relative Percent Difference

Origins Laboratory, Inc.



Noelle Doyle Mathis, President

*The results in this report apply to the samples analyzed in accordance with the chain of custody document. This analytical report must be reproduced in its entirety.*