

# **EXTRACTION OIL & GAS**

**WELD COUNTY, COLORADO (NAD 83)**

**SE NW SEC. 8 T6N R65W 6th P.M.**

**JANSSEN 11**

**ORIGINAL WELLBORE**

**05 December, 2014**

**Plan: PROPOSAL #1**

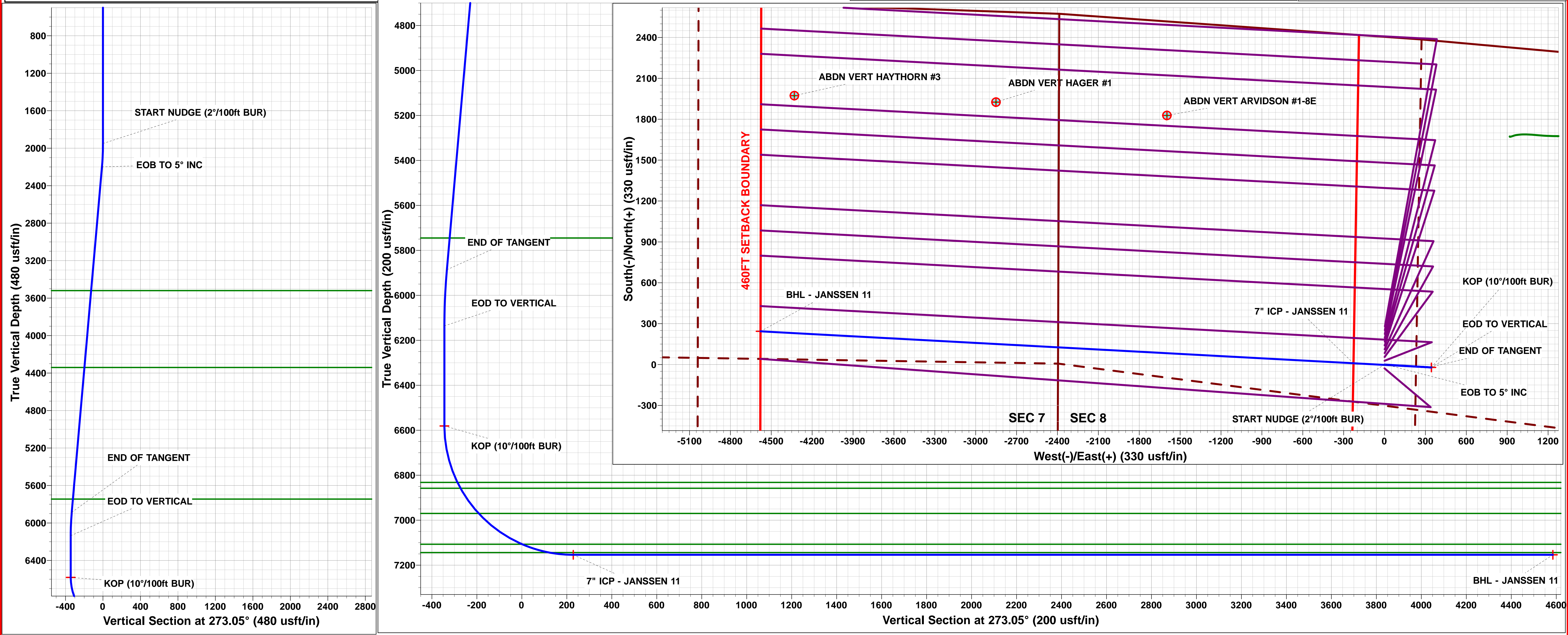
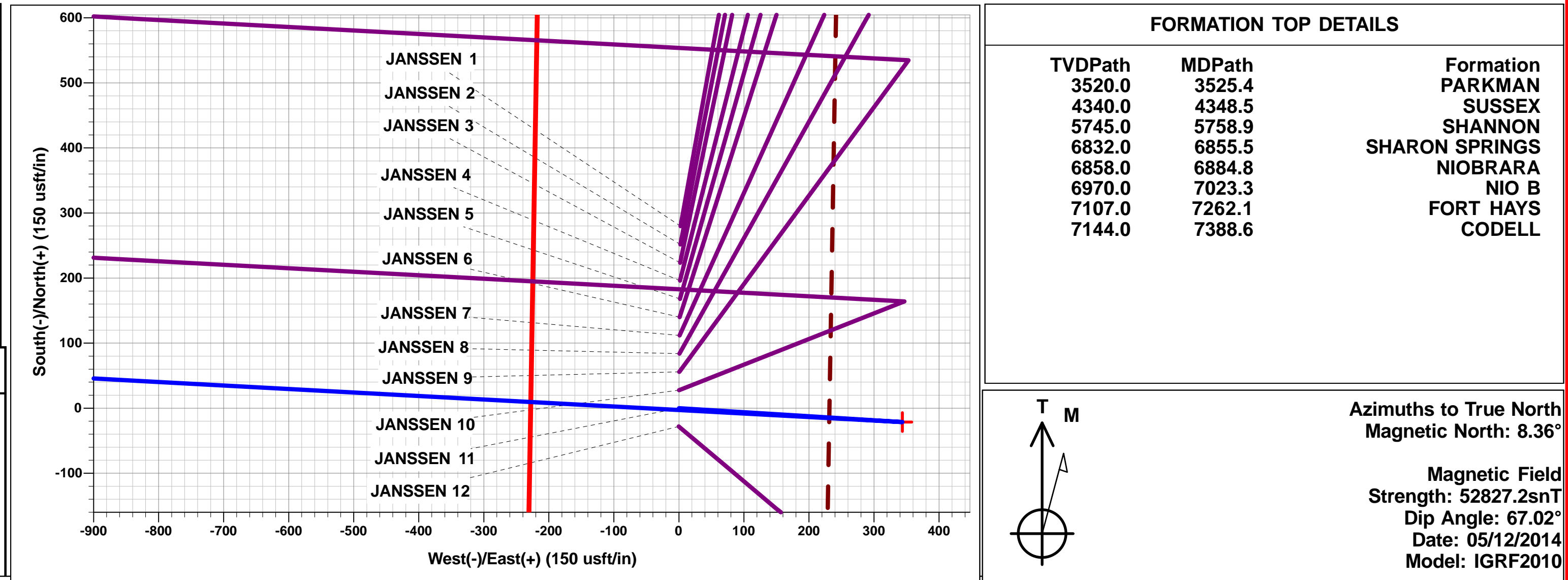




Project: WELD COUNTY, COLORADO (NAD 83)  
Site: SE NW SEC. 8 T6N R65W 6th P.M.  
Well: JANSSEN 11  
Wellbore: ORIGINAL WELLBORE  
Design: PROPOSAL #1

ANNOTATIONS									
TVD	MD	Inc	Azi	+N/-S	+E/-W	VSect	Dep	Annotation	
1950.0	1950.0	0.00	0.00	0.0	0.0	0.0	0.0	START NUDGE (2°/100ft BUR)	
2199.6	2199.9	5.00	93.55	-0.7	10.9	-10.9	10.9	EOB TO 5° INC	
5886.4	5900.8	5.00	93.55	-20.6	332.7	-333.4	333.4	END OF TANGENT	
6136.0	6150.7	0.00	0.00	-21.3	343.6	-344.2	344.3	EOD TO VERTICAL	
6581.0	6595.7	0.00	0.00	-21.3	343.6	-344.2	344.3	KOP (10°/100ft BUR)	
7154.0	7495.8	90.00	273.08	9.5	-228.6	228.8	917.3	7" ICP - JANSSEN 11	
7154.0	11852.1	90.00	273.09	243.8	-4578.6	4585.0	5273.6	BHL - JANSSEN 11	

WELLBORE TARGET DETAILS (LAT/LONG)					
Name	TVD	+N/-S	+E/-W	Latitude	Longitude
KOP - JANSSEN 11	6581.0	-21.3	343.6	40.502569	-104.687041
7" ICP - JANSSEN 11	7154.0	9.5	-228.6	40.502654	-104.689099
BHL - JANSSEN 11	7154.0	243.8	-4578.6	40.503296	-104.704741



# Planning Report



<b>Database:</b>	EDM 5000.1 Single User Db	<b>Local Co-ordinate Reference:</b>	Well JANSSEN 11
<b>Company:</b>	EXTRACTION OIL & GAS	<b>TVD Reference:</b>	KB-EST @ 4796.0usft (Original Well Elev)
<b>Project:</b>	WELD COUNTY, COLORADO (NAD 83)	<b>MD Reference:</b>	KB-EST @ 4796.0usft (Original Well Elev)
<b>Site:</b>	SE NW SEC. 8 T6N R65W 6th P.M.	<b>North Reference:</b>	True
<b>Well:</b>	JANSSEN 11	<b>Survey Calculation Method:</b>	Minimum Curvature
<b>Wellbore:</b>	ORIGINAL WELLBORE		
<b>Design:</b>	PROPOSAL #1		

<b>Project</b>	WELD COUNTY, COLORADO (NAD 83)		
<b>Map System:</b>	US State Plane 1983	<b>System Datum:</b>	Mean Sea Level
<b>Geo Datum:</b>	North American Datum 1983		
<b>Map Zone:</b>	Colorado Northern Zone		Using geodetic scale factor

<b>Site</b>	SE NW SEC. 8 T6N R65W 6th P.M.		
<b>Site Position:</b>		<b>Northing:</b>	1,427,260.85 usft
<b>From:</b>	Lat/Long	<b>Easting:</b>	3,225,727.81 usft
<b>Position Uncertainty:</b>	0.0 usft	<b>Slot Radius:</b>	1.10000ft
		<b>Latitude:</b>	40.503396
		<b>Longitude:</b>	-104.688268
		<b>Grid Convergence:</b>	0.52 °

<b>Well</b>	JANSSEN 11		
<b>Well Position</b>	<b>+N/-S</b>	-279.8 usft	<b>Northing:</b>
	<b>+E/-W</b>	-2.5 usft	<b>Easting:</b>
<b>Position Uncertainty</b>		0.0 usft	<b>Wellhead Elevation:</b>
			<b>Latitude:</b>
			<b>Longitude:</b>
			<b>Ground Level:</b>

<b>Wellbore</b>	ORIGINAL WELLBORE				
<b>Magnetics</b>	<b>Model Name</b>	<b>Sample Date</b>	<b>Declination (°)</b>	<b>Dip Angle (°)</b>	<b>Field Strength (nT)</b>
	IGRF2010	05/12/2014	8.36	67.02	52,827

<b>Design</b>	PROPOSAL #1			
<b>Audit Notes:</b>				
<b>Version:</b>	<b>Phase:</b>	PROTOTYPE	<b>Tie On Depth:</b>	0.0
<b>Vertical Section:</b>	<b>Depth From (TVD) (usft)</b>	<b>+N/-S (usft)</b>	<b>+E/-W (usft)</b>	<b>Direction (°)</b>
	7,154.0	0.0	0.0	273.05

<b>Plan Sections</b>											
MD (usft)	Inc (°)	Azi (°)	Vertical Depth	SS (usft)	+N/-S (usft)	+E/-W (usft)	Dogleg Rate (°/100usf)	Build Rate (°/100usf)	Turn Rate (°/100usf)	TFO (°)	Target
0.0	0.00	0.00	0.0	-4,796.0	0.0	0.0	0.00	0.00	0.00	0.00	
1,950.0	0.00	0.00	1,950.0	-2,846.0	0.0	0.0	0.00	0.00	0.00	0.00	
2,199.9	5.00	93.55	2,199.6	-2,596.4	-0.7	10.9	2.00	2.00	0.00	93.55	
5,900.8	5.00	93.55	5,886.4	1,090.4	-20.6	332.7	0.00	0.00	0.00	0.00	
6,150.7	0.00	0.00	6,136.0	1,340.0	-21.3	343.6	2.00	-2.00	0.00	180.00	
6,595.7	0.00	0.00	6,581.0	1,785.0	-21.3	343.6	0.00	0.00	0.00	0.00	KOP - JANSSEN 11
7,495.8	90.00	273.08	7,154.0	2,358.0	9.5	-228.6	10.00	10.00	-9.66	273.08	7" ICP - JANSSEN
11,852.1	90.00	273.09	7,154.0	2,358.0	243.8	-4,578.6	0.00	0.00	0.00	120.46	BHL - JANSSEN 11

# Planning Report



<b>Database:</b>	EDM 5000.1 Single User Db	<b>Local Co-ordinate Reference:</b>	Well JANSSEN 11
<b>Company:</b>	EXTRACTION OIL & GAS	<b>TVD Reference:</b>	KB-EST @ 4796.0usft (Original Well Elev)
<b>Project:</b>	WELD COUNTY, COLORADO (NAD 83)	<b>MD Reference:</b>	KB-EST @ 4796.0usft (Original Well Elev)
<b>Site:</b>	SE NW SEC. 8 T6N R65W 6th P.M.	<b>North Reference:</b>	True
<b>Well:</b>	JANSSEN 11	<b>Survey Calculation Method:</b>	Minimum Curvature
<b>Wellbore:</b>	ORIGINAL WELLBORE		
<b>Design:</b>	PROPOSAL #1		

Planned Survey										
MD (usft)	Inc (°)	Azi (°)	TVD (usft)	SS (usft)	+N/-S (usft)	+E/-W (usft)	Vertical Section (usft)	Dogleg Rate (°/100usft)	Build Rate (°/100usft)	Turn Rate (°/100usft)
0.0	0.00	0.00	0.0	4,796.00	0.0	0.0	0.0	0.00	0.00	0.00
100.0	0.00	0.00	100.0	4,696.00	0.0	0.0	0.0	0.00	0.00	0.00
200.0	0.00	0.00	200.0	4,596.00	0.0	0.0	0.0	0.00	0.00	0.00
300.0	0.00	0.00	300.0	4,496.00	0.0	0.0	0.0	0.00	0.00	0.00
400.0	0.00	0.00	400.0	4,396.00	0.0	0.0	0.0	0.00	0.00	0.00
500.0	0.00	0.00	500.0	4,296.00	0.0	0.0	0.0	0.00	0.00	0.00
600.0	0.00	0.00	600.0	4,196.00	0.0	0.0	0.0	0.00	0.00	0.00
700.0	0.00	0.00	700.0	4,096.00	0.0	0.0	0.0	0.00	0.00	0.00
800.0	0.00	0.00	800.0	3,996.00	0.0	0.0	0.0	0.00	0.00	0.00
900.0	0.00	0.00	900.0	3,896.00	0.0	0.0	0.0	0.00	0.00	0.00
1,000.0	0.00	0.00	1,000.0	3,796.00	0.0	0.0	0.0	0.00	0.00	0.00
1,100.0	0.00	0.00	1,100.0	3,696.00	0.0	0.0	0.0	0.00	0.00	0.00
1,200.0	0.00	0.00	1,200.0	3,596.00	0.0	0.0	0.0	0.00	0.00	0.00
1,300.0	0.00	0.00	1,300.0	3,496.00	0.0	0.0	0.0	0.00	0.00	0.00
1,400.0	0.00	0.00	1,400.0	3,396.00	0.0	0.0	0.0	0.00	0.00	0.00
1,500.0	0.00	0.00	1,500.0	3,296.00	0.0	0.0	0.0	0.00	0.00	0.00
1,600.0	0.00	0.00	1,600.0	3,196.00	0.0	0.0	0.0	0.00	0.00	0.00
1,700.0	0.00	0.00	1,700.0	3,096.00	0.0	0.0	0.0	0.00	0.00	0.00
1,800.0	0.00	0.00	1,800.0	2,996.00	0.0	0.0	0.0	0.00	0.00	0.00
1,900.0	0.00	0.00	1,900.0	2,896.00	0.0	0.0	0.0	0.00	0.00	0.00
<b>START NUDGE (2°/100ft BUR)</b>										
1,950.0	0.00	0.00	1,950.0	2,846.00	0.0	0.0	0.0	0.00	0.00	0.00
2,000.0	1.00	93.55	2,000.0	2,796.00	0.0	0.4	-0.4	2.00	2.00	0.00
2,100.0	3.00	93.55	2,099.9	2,696.07	-0.2	3.9	-3.9	2.00	2.00	0.00
<b>EOB TO 5° INC</b>										
2,199.9	5.00	93.55	2,199.6	2,596.38	-0.7	10.9	-10.9	2.00	2.00	0.00
2,200.0	5.00	93.55	2,199.7	2,596.32	-0.7	10.9	-10.9	0.00	0.00	0.00
2,300.0	5.00	93.55	2,299.3	2,496.70	-1.2	19.6	-19.6	0.00	0.00	0.00
2,400.0	5.00	93.55	2,398.9	2,397.08	-1.8	28.3	-28.3	0.00	0.00	0.00
2,500.0	5.00	93.55	2,498.5	2,297.46	-2.3	37.0	-37.0	0.00	0.00	0.00
2,600.0	5.00	93.55	2,598.2	2,197.84	-2.8	45.7	-45.8	0.00	0.00	0.00
2,700.0	5.00	93.55	2,697.8	2,098.22	-3.4	54.4	-54.5	0.00	0.00	0.00
2,800.0	5.00	93.55	2,797.4	1,998.60	-3.9	63.1	-63.2	0.00	0.00	0.00
2,900.0	5.00	93.55	2,897.0	1,898.98	-4.4	71.8	-71.9	0.00	0.00	0.00
3,000.0	5.00	93.55	2,996.6	1,799.36	-5.0	80.5	-80.6	0.00	0.00	0.00
3,100.0	5.00	93.55	3,096.3	1,699.74	-5.5	89.2	-89.3	0.00	0.00	0.00
3,200.0	5.00	93.55	3,195.9	1,600.12	-6.1	97.8	-98.0	0.00	0.00	0.00
3,300.0	5.00	93.55	3,295.5	1,500.50	-6.6	106.5	-106.7	0.00	0.00	0.00
3,400.0	5.00	93.55	3,395.1	1,400.88	-7.1	115.2	-115.5	0.00	0.00	0.00
3,500.0	5.00	93.55	3,494.7	1,301.26	-7.7	123.9	-124.2	0.00	0.00	0.00
<b>PARKMAN</b>										
3,525.4	5.00	93.55	3,520.0	1,276.00	-7.8	126.1	-126.4	0.00	0.00	0.00
3,600.0	5.00	93.55	3,594.4	1,201.64	-8.2	132.6	-132.9	0.00	0.00	0.00
3,700.0	5.00	93.55	3,694.0	1,102.02	-8.8	141.3	-141.6	0.00	0.00	0.00
3,800.0	5.00	93.55	3,793.6	1,002.40	-9.3	150.0	-150.3	0.00	0.00	0.00
3,900.0	5.00	93.55	3,893.2	902.78	-9.8	158.7	-159.0	0.00	0.00	0.00
4,000.0	5.00	93.55	3,992.8	803.16	-10.4	167.4	-167.7	0.00	0.00	0.00
4,100.0	5.00	93.55	4,092.5	703.54	-10.9	176.1	-176.4	0.00	0.00	0.00
4,200.0	5.00	93.55	4,192.1	603.92	-11.5	184.8	-185.2	0.00	0.00	0.00
4,300.0	5.00	93.55	4,291.7	504.30	-12.0	193.5	-193.9	0.00	0.00	0.00
<b>SUSSEX</b>										
4,348.5	5.00	93.55	4,340.0	456.00	-12.3	197.7	-198.1	0.00	0.00	0.00
4,400.0	5.00	93.55	4,391.3	404.68	-12.5	202.2	-202.6	0.00	0.00	0.00
4,500.0	5.00	93.55	4,490.9	305.06	-13.1	210.9	-211.3	0.00	0.00	0.00

<b>Database:</b>	EDM 5000.1 Single User Db	<b>Local Co-ordinate Reference:</b>	Well JANSSEN 11
<b>Company:</b>	EXTRACTION OIL & GAS	<b>TVD Reference:</b>	KB-EST @ 4796.0usft (Original Well Elev)
<b>Project:</b>	WELD COUNTY, COLORADO (NAD 83)	<b>MD Reference:</b>	KB-EST @ 4796.0usft (Original Well Elev)
<b>Site:</b>	SE NW SEC. 8 T6N R65W 6th P.M.	<b>North Reference:</b>	True
<b>Well:</b>	JANSSEN 11	<b>Survey Calculation Method:</b>	Minimum Curvature
<b>Wellbore:</b>	ORIGINAL WELLBORE		
<b>Design:</b>	PROPOSAL #1		

## Planned Survey

MD (usft)	Inc (°)	Azi (°)	TVD (usft)	SS (usft)	+N/-S (usft)	+E/-W (usft)	Vertical Section (usft)	Dogleg Rate (°/100usft)	Build Rate (°/100usft)	Turn Rate (°/100usft)
4,600.0	5.00	93.55	4,590.6	205.45	-13.6	219.6	-220.0	0.00	0.00	0.00
4,700.0	5.00	93.55	4,690.2	105.83	-14.2	228.3	-228.7	0.00	0.00	0.00
4,800.0	5.00	93.55	4,789.8	6.21	-14.7	237.0	-237.4	0.00	0.00	0.00
4,900.0	5.00	93.55	4,889.4	-93.41	-15.2	245.7	-246.2	0.00	0.00	0.00
5,000.0	5.00	93.55	4,989.0	-193.03	-15.8	254.4	-254.9	0.00	0.00	0.00
5,100.0	5.00	93.55	5,088.7	-292.65	-16.3	263.1	-263.6	0.00	0.00	0.00
5,200.0	5.00	93.55	5,188.3	-392.27	-16.8	271.8	-272.3	0.00	0.00	0.00
5,300.0	5.00	93.55	5,287.9	-491.89	-17.4	280.5	-281.0	0.00	0.00	0.00
5,400.0	5.00	93.55	5,387.5	-591.51	-17.9	289.2	-289.7	0.00	0.00	0.00
5,500.0	5.00	93.55	5,487.1	-691.13	-18.5	297.9	-298.4	0.00	0.00	0.00
5,600.0	5.00	93.55	5,586.8	-790.75	-19.0	306.6	-307.1	0.00	0.00	0.00
5,700.0	5.00	93.55	5,686.4	-890.37	-19.5	315.3	-315.9	0.00	0.00	0.00
<b>SHANNON</b>										
5,758.9	5.00	93.55	5,745.0	-949.00	-19.9	320.4	-321.0	0.00	0.00	0.00
5,800.0	5.00	93.55	5,786.0	-989.99	-20.1	324.0	-324.6	0.00	0.00	0.00
5,900.0	5.00	93.55	5,885.6	-1,089.61	-20.6	332.7	-333.3	0.00	0.00	0.00
<b>END OF TANGENT</b>										
5,900.8	5.00	93.55	5,886.4	-1,090.38	-20.6	332.7	-333.4	0.00	0.00	0.00
6,000.0	3.01	93.55	5,985.4	-1,189.36	-21.1	339.6	-340.3	2.00	-2.00	0.00
6,100.0	1.01	93.55	6,085.3	-1,289.29	-21.3	343.2	-343.8	2.00	-2.00	0.00
<b>EOD TO VERTICAL</b>										
6,150.7	0.00	0.00	6,136.0	-1,340.00	-21.3	343.6	-344.2	2.00	-2.00	0.00
6,200.0	0.00	0.00	6,185.3	-1,389.29	-21.3	343.6	-344.2	0.00	0.00	0.00
6,300.0	0.00	0.00	6,285.3	-1,489.29	-21.3	343.6	-344.2	0.00	0.00	0.00
6,400.0	0.00	0.00	6,385.3	-1,589.29	-21.3	343.6	-344.2	0.00	0.00	0.00
6,500.0	0.00	0.00	6,485.3	-1,689.29	-21.3	343.6	-344.2	0.00	0.00	0.00
<b>KOP (10°/100ft BUR)</b>										
6,595.7	0.00	0.00	6,581.0	-1,785.00	-21.3	343.6	-344.2	0.00	0.00	0.00
6,600.0	0.43	273.08	6,585.3	-1,789.29	-21.3	343.6	-344.2	10.00	10.00	0.00
6,700.0	10.43	273.08	6,684.7	-1,888.72	-20.8	334.1	-334.8	10.00	10.00	0.00
6,800.0	20.43	273.08	6,781.0	-1,984.99	-19.4	307.6	-308.2	10.00	10.00	0.00
<b>SHARON SPRINGS</b>										
6,855.5	25.98	273.08	6,832.0	-2,036.00	-18.2	285.8	-286.3	10.00	10.00	0.00
<b>NIOBRARA</b>										
6,884.8	28.91	273.08	6,858.0	-2,062.00	-17.5	272.3	-272.8	10.00	10.00	0.00
6,900.0	30.43	273.08	6,871.2	-2,075.19	-17.1	264.8	-265.3	10.00	10.00	0.00
7,000.0	40.43	273.08	6,952.6	-2,156.57	-14.0	207.0	-207.4	10.00	10.00	0.00
<b>NIO B</b>										
7,023.3	42.76	273.08	6,970.0	-2,174.00	-13.1	191.5	-192.0	10.00	10.00	0.00
7,100.0	50.43	273.08	7,022.7	-2,226.67	-10.1	135.9	-136.3	10.00	10.00	0.00
7,200.0	60.42	273.08	7,079.3	-2,283.34	-5.7	53.8	-54.1	10.00	10.00	0.00
<b>FORT HAYS</b>										
7,262.1	66.63	273.08	7,107.0	-2,311.00	-2.7	-1.6	1.5	10.00	10.00	0.00
7,300.0	70.42	273.08	7,120.9	-2,324.88	-0.8	-36.9	36.8	10.00	10.00	0.00
<b>CODELL</b>										
7,388.6	79.28	273.08	7,144.0	-2,348.00	3.8	-122.1	122.2	10.00	10.00	0.00
7,400.0	80.42	273.08	7,146.0	-2,350.01	4.4	-133.4	133.4	10.00	10.00	0.00
<b>7" ICP - JANSSEN 11</b>										
7,495.8	90.00	273.08	7,154.0	-2,358.00	9.5	-228.6	228.8	10.00	10.00	0.00
7,500.0	90.00	273.08	7,154.0	-2,358.00	9.7	-232.8	233.0	0.00	0.00	0.00
7,600.0	90.00	273.08	7,154.0	-2,358.00	15.1	-332.6	333.0	0.00	0.00	0.00
7,700.0	90.00	273.08	7,154.0	-2,357.99	20.5	-432.5	433.0	0.00	0.00	0.00



<b>Database:</b>	EDM 5000.1 Single User Db	<b>Local Co-ordinate Reference:</b>	Well JANSSEN 11
<b>Company:</b>	EXTRACTION OIL & GAS	<b>TVD Reference:</b>	KB-EST @ 4796.0usft (Original Well Elev)
<b>Project:</b>	WELD COUNTY, COLORADO (NAD 83)	<b>MD Reference:</b>	KB-EST @ 4796.0usft (Original Well Elev)
<b>Site:</b>	SE NW SEC. 8 T6N R65W 6th P.M.	<b>North Reference:</b>	True
<b>Well:</b>	JANSSEN 11	<b>Survey Calculation Method:</b>	Minimum Curvature
<b>Wellbore:</b>	ORIGINAL WELLBORE		
<b>Design:</b>	PROPOSAL #1		

Planned Survey										
MD (usft)	Inc (°)	Azi (°)	TVD (usft)	SS (usft)	+N/-S (usft)	+E/-W (usft)	Vertical Section (usft)	Dogleg Rate (°/100usft)	Build Rate (°/100usft)	Turn Rate (°/100usft)
7,800.0	90.00	273.08	7,154.0	-2,357.99	25.8	-532.4	533.0	0.00	0.00	0.00
7,900.0	90.00	273.08	7,154.0	-2,357.98	31.2	-632.2	633.0	0.00	0.00	0.00
8,000.0	90.00	273.08	7,154.0	-2,357.98	36.6	-732.1	733.0	0.00	0.00	0.00
8,100.0	90.00	273.08	7,154.0	-2,357.98	41.9	-831.9	833.0	0.00	0.00	0.00
8,200.0	90.00	273.08	7,154.0	-2,357.98	47.3	-931.8	933.0	0.00	0.00	0.00
8,300.0	90.00	273.08	7,154.0	-2,357.97	52.7	-1,031.6	1,033.0	0.00	0.00	0.00
8,400.0	90.00	273.08	7,154.0	-2,357.97	58.1	-1,131.5	1,133.0	0.00	0.00	0.00
8,500.0	90.00	273.08	7,154.0	-2,357.97	63.4	-1,231.3	1,233.0	0.00	0.00	0.00
8,600.0	90.00	273.08	7,154.0	-2,357.97	68.8	-1,331.2	1,333.0	0.00	0.00	0.00
8,700.0	90.00	273.08	7,154.0	-2,357.96	74.2	-1,431.1	1,433.0	0.00	0.00	0.00
8,800.0	90.00	273.08	7,154.0	-2,357.96	79.6	-1,530.9	1,533.0	0.00	0.00	0.00
8,900.0	90.00	273.08	7,154.0	-2,357.96	84.9	-1,630.8	1,633.0	0.00	0.00	0.00
9,000.0	90.00	273.08	7,154.0	-2,357.96	90.3	-1,730.6	1,733.0	0.00	0.00	0.00
9,100.0	90.00	273.08	7,154.0	-2,357.96	95.7	-1,830.5	1,833.0	0.00	0.00	0.00
9,200.0	90.00	273.08	7,154.0	-2,357.96	101.1	-1,930.3	1,933.0	0.00	0.00	0.00
9,300.0	90.00	273.08	7,154.0	-2,357.96	106.5	-2,030.2	2,033.0	0.00	0.00	0.00
9,400.0	90.00	273.08	7,154.0	-2,357.96	111.8	-2,130.0	2,133.0	0.00	0.00	0.00
9,500.0	90.00	273.08	7,154.0	-2,357.95	117.2	-2,229.9	2,233.0	0.00	0.00	0.00
9,600.0	90.00	273.08	7,154.0	-2,357.95	122.6	-2,329.8	2,333.0	0.00	0.00	0.00
9,700.0	90.00	273.08	7,154.0	-2,357.95	128.0	-2,429.6	2,433.0	0.00	0.00	0.00
9,800.0	90.00	273.08	7,154.0	-2,357.95	133.3	-2,529.5	2,533.0	0.00	0.00	0.00
9,900.0	90.00	273.08	7,154.0	-2,357.96	138.7	-2,629.3	2,633.0	0.00	0.00	0.00
10,000.0	90.00	273.08	7,154.0	-2,357.96	144.1	-2,729.2	2,733.0	0.00	0.00	0.00
10,100.0	90.00	273.08	7,154.0	-2,357.96	149.5	-2,829.0	2,833.0	0.00	0.00	0.00
10,200.0	90.00	273.08	7,154.0	-2,357.96	154.9	-2,928.9	2,933.0	0.00	0.00	0.00
10,300.0	90.00	273.08	7,154.0	-2,357.96	160.2	-3,028.7	3,033.0	0.00	0.00	0.00
10,400.0	90.00	273.08	7,154.0	-2,357.96	165.6	-3,128.6	3,133.0	0.00	0.00	0.00
10,500.0	90.00	273.08	7,154.0	-2,357.96	171.0	-3,228.5	3,233.0	0.00	0.00	0.00
10,600.0	90.00	273.09	7,154.0	-2,357.96	176.4	-3,328.3	3,333.0	0.00	0.00	0.00
10,700.0	90.00	273.09	7,154.0	-2,357.96	181.8	-3,428.2	3,433.0	0.00	0.00	0.00
10,800.0	90.00	273.09	7,154.0	-2,357.97	187.2	-3,528.0	3,533.0	0.00	0.00	0.00
10,900.0	90.00	273.09	7,154.0	-2,357.97	192.5	-3,627.9	3,633.0	0.00	0.00	0.00
11,000.0	90.00	273.09	7,154.0	-2,357.97	197.9	-3,727.7	3,733.0	0.00	0.00	0.00
11,100.0	90.00	273.09	7,154.0	-2,357.97	203.3	-3,827.6	3,833.0	0.00	0.00	0.00
11,200.0	90.00	273.09	7,154.0	-2,357.98	208.7	-3,927.4	3,933.0	0.00	0.00	0.00
11,300.0	90.00	273.09	7,154.0	-2,357.98	214.1	-4,027.3	4,033.0	0.00	0.00	0.00
11,400.0	90.00	273.09	7,154.0	-2,357.98	219.5	-4,127.1	4,133.0	0.00	0.00	0.00
11,500.0	90.00	273.09	7,154.0	-2,357.99	224.8	-4,227.0	4,233.0	0.00	0.00	0.00
11,600.0	90.00	273.09	7,154.0	-2,357.99	230.2	-4,326.9	4,333.0	0.00	0.00	0.00
11,700.0	90.00	273.09	7,154.0	-2,357.99	235.6	-4,426.7	4,433.0	0.00	0.00	0.00
11,800.0	90.00	273.09	7,154.0	-2,358.00	241.0	-4,526.6	4,533.0	0.00	0.00	0.00
<b>BHL - JANSSEN 11</b>										
<b>11,852.1</b>	<b>90.00</b>	<b>273.09</b>	<b>7,154.0</b>	<b>-2,358.00</b>	<b>243.8</b>	<b>-4,578.6</b>	<b>4,585.0</b>	<b>0.00</b>	<b>0.00</b>	<b>0.00</b>

<b>Database:</b>	EDM 5000.1 Single User Db	<b>Local Co-ordinate Reference:</b>	Well JANSSEN 11
<b>Company:</b>	EXTRACTION OIL & GAS	<b>TVD Reference:</b>	KB-EST @ 4796.0usft (Original Well Elev)
<b>Project:</b>	WELD COUNTY, COLORADO (NAD 83)	<b>MD Reference:</b>	KB-EST @ 4796.0usft (Original Well Elev)
<b>Site:</b>	SE NW SEC. 8 T6N R65W 6th P.M.	<b>North Reference:</b>	True
<b>Well:</b>	JANSSEN 11	<b>Survey Calculation Method:</b>	Minimum Curvature
<b>Wellbore:</b>	ORIGINAL WELLBORE		
<b>Design:</b>	PROPOSAL #1		

Formations						
MD (usft)	TVD (usft)	Name	Lithology	Dip (°)	Dip Direction (°)	
3,525.4	3,520.0	PARKMAN				
4,348.5	4,340.0	SUSSEX				
5,758.9	5,745.0	SHANNON				
6,855.5	6,832.0	SHARON SPRINGS				
6,884.8	6,858.0	NIOBRARA				
7,023.3	6,970.0	NIO B				
7,262.1	7,107.0	FORT HAYS				
7,388.6	7,144.0	CODELL				

Plan Annotations				
MD (usft)	TVD (usft)	Local Coordinates		Comment
		+N/-S (usft)	+E/-W (usft)	
1,950.0	1,950.0	0.0	0.0	START NUDGE (2°/100ft BUR)
2,199.9	2,199.6	-0.7	10.9	EOB TO 5° INC
5,900.8	5,886.4	-20.6	332.7	END OF TANGENT
6,150.7	6,136.0	-21.3	343.6	EOD TO VERTICAL
6,595.7	6,581.0	-21.3	343.6	KOP (10°/100ft BUR)
7,495.8	7,154.0	9.5	-228.6	7" ICP - JANSSEN 11
11,852.1	7,154.0	243.8	-4,578.6	BHL - JANSSEN 11