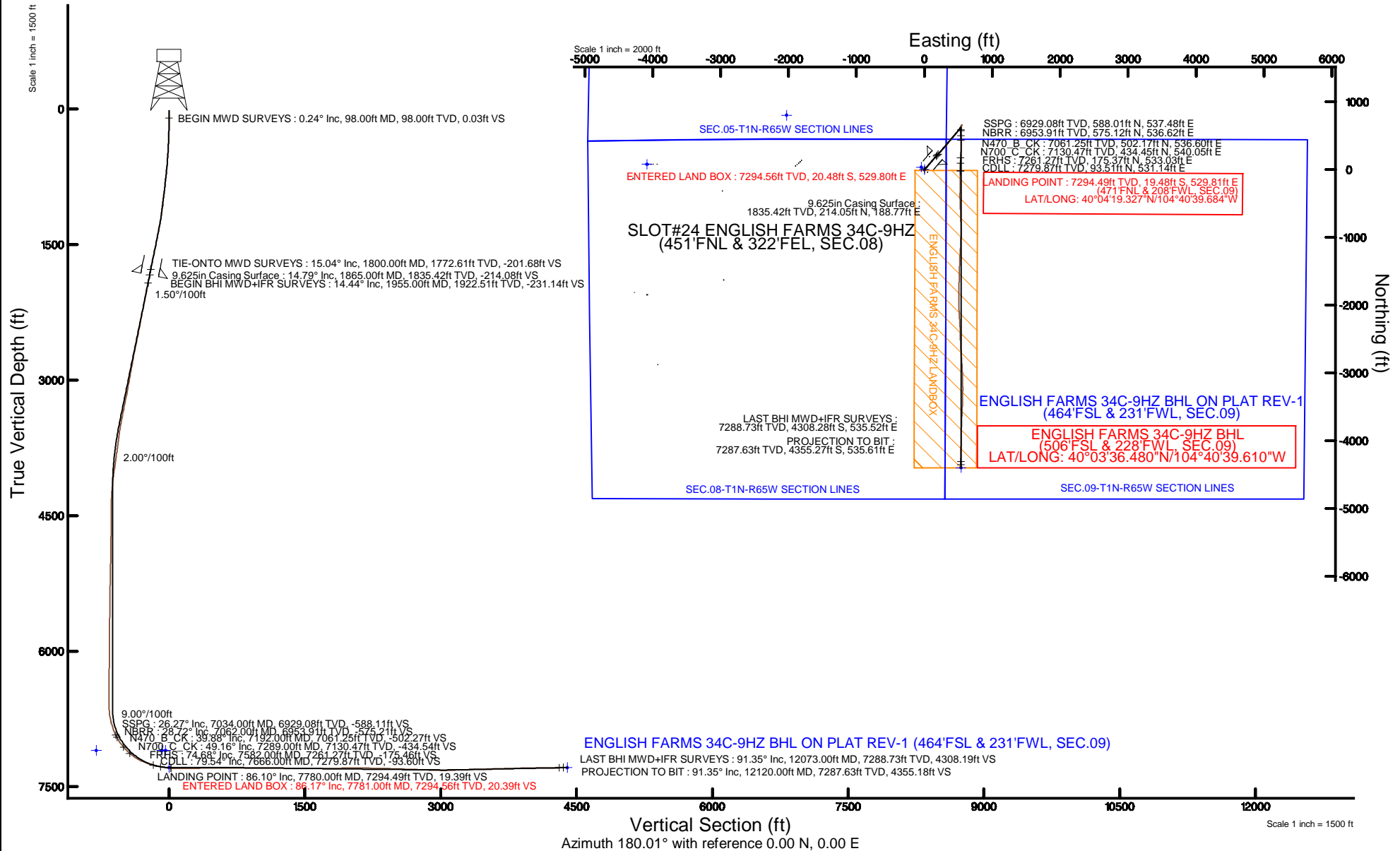


KERR-MCGEE OIL & GAS ONSHORE LP (WA)

Location: COLORADO Slot: SLOT#24 ENGLISH FARMS 34C-9HZ (451'FNL & 322'FEL, SEC.08)
 Field: WELD COUNTY (UTM/TRUE NORTH) Well: ENGLISH FARMS 34C-9HZ
 Facility: SEC.08-T1N-R65W Wellbore: ENGLISH FARMS 34C-9HZ PWB

Plot reference wellpath is ENGLISH FARMS 34C-9HZ (REV-B.0) PWB

True vertical depths are referenced to XTREME 24 (16'KB) (RKB)	Grid System: NAD83 / UTM Zone 13 North, US feet
Measured depths are referenced to XTREME 24 (16'KB) (RKB)	North Reference: True north
XTREME 24 (16'KB) (RKB) to Mean Sea Level: 4948 feet	Scale: True distance
Mean Sea Level to Mud line (At Slot: SLOT#24 ENGLISH FARMS 34C-9HZ (451'FNL & 322'FEL, SEC.08)): 0 feet	Depths are in feet
Coordinates are in feet referenced to Slot	Created by: amrcar on 03/Aug/2015





Actual Wellpath Report

ENGLISH FARMS 34C-9HZ AWP
Page 1 of 6



REFERENCE WELLPATH IDENTIFICATION			
Operator	KERR-MCGEE OIL & GAS ONSHORE LP (WA)	Slot	SLOT#24 ENGLISH FARMS 34C-9HZ (451'FNL & 322'FEL, SEC.08)
Area	COLORADO	Well	ENGLISH FARMS 34C-9HZ
Field	WELD COUNTY (UTM/TRUE NORTH)	Wellbore	ENGLISH FARMS 34C-9HZ AWB <12120>
Facility	SEC.08-T1N-R65W		

REPORT SETUP INFORMATION			
Projection System	NAD83 / UTM Zone 13 North, US feet	Software System	WellArchitect® 4.0.0
North Reference	True	User	Amarcar
Scale	0.999609	Report Generated	03/Aug/2015 at 16:37
Convergence at slot	0.21° East	Database/Source file	KERR MCGEE UTM/ENGLISH_FARMS_34C-9HZ__AWB__12120_.xml

WELLPATH LOCATION						
	Local coordinates		Grid coordinates		Geographic coordinates	
	North[ft]	East[ft]	Easting[US ft]	Northing[US ft]	Latitude	Longitude
Slot Location	305.60	334.99	1730055.38	14553145.47	40°04'19.520"N	104°40'46.499"W
Facility Reference Pt			1729721.63	14552838.79	40°04'16.500"N	104°40'50.808"W
Field Reference Pt			1698235.31	14552047.82	40°04'09.600"N	104°47'36.000"W

WELLPATH DATUM			
Calculation method	Minimum curvature	XTREME 24 (16'KB) (RKB) to Facility Vertical Datum	4948.00ft
Horizontal Reference Pt	Slot	XTREME 24 (16'KB) (RKB) to Mean Sea Level	4948.00ft
Vertical Reference Pt	XTREME 24 (16'KB) (RKB)	XTREME 24 (16'KB) (RKB) to Mud Line at Slot (SLOT#24 ENGLISH FARMS 34C-9HZ (451'FNL & 322'FEL, SEC.08))	4948.00ft
MD Reference Pt	XTREME 24 (16'KB) (RKB)	Section Origin	N 0.00, E 0.00 ft
Field Vertical Reference	Mean Sea Level	Section Azimuth	180.01°

REFERENCE WELLPATH IDENTIFICATION

Operator	KERR-MCGEE OIL & GAS ONSHORE LP (WA)	Slot	SLOT#24 ENGLISH FARMS 34C-9HZ (451'FNL & 322'FEL, SEC.08)
Area	COLORADO	Well	ENGLISH FARMS 34C-9HZ
Field	WELD COUNTY (UTM/TRUE NORTH)	Wellbore	ENGLISH FARMS 34C-9HZ AWB <12120>
Facility	SEC.08-T1N-R65W		

WELLPATH DATA (121 stations) † = interpolated/extrapolated station

MD [ft]	Inclination [°]	Azimuth [°]	TVD [ft]	Vert Sect [ft]	North [ft]	East [ft]	Latitude	Longitude	DLS [°/100ft]	Comments
0.00†	0.000	258.500	0.00	0.00	0.00	0.00	40°04'19.520"N	104°40'46.499"W	0.00	
16.00	0.000	258.500	16.00	0.00	0.00	0.00	40°04'19.520"N	104°40'46.499"W	0.00	
98.00	0.240	258.500	98.00	0.03	-0.03	-0.17	40°04'19.520"N	104°40'46.501"W	0.29	BEGIN MWD SURVEYS
189.00	1.270	39.750	188.99	-0.70	0.70	0.29	40°04'19.527"N	104°40'46.495"W	1.61	
281.00	2.250	51.750	280.95	-2.61	2.61	2.36	40°04'19.546"N	104°40'46.469"W	1.13	
376.00	3.980	48.270	375.81	-5.96	5.95	6.29	40°04'19.579"N	104°40'46.418"W	1.83	
471.00	4.220	36.940	470.56	-10.94	10.94	10.85	40°04'19.628"N	104°40'46.359"W	0.89	
566.00	5.560	36.680	565.22	-17.43	17.43	15.70	40°04'19.692"N	104°40'46.297"W	1.41	
693.00	7.900	42.610	691.33	-28.79	28.79	25.28	40°04'19.804"N	104°40'46.174"W	1.92	
788.00	8.790	44.880	785.33	-38.74	38.74	34.82	40°04'19.903"N	104°40'46.051"W	1.00	
883.00	8.480	40.540	879.25	-49.21	49.20	44.50	40°04'20.006"N	104°40'45.927"W	0.76	
978.00	8.530	39.610	973.21	-59.96	59.95	53.54	40°04'20.112"N	104°40'45.810"W	0.15	
1073.00	9.490	39.750	1067.03	-71.41	71.40	63.04	40°04'20.226"N	104°40'45.688"W	1.01	
1168.00	10.770	40.430	1160.55	-84.19	84.18	73.81	40°04'20.352"N	104°40'45.550"W	1.35	
1326.00	13.840	38.930	1314.90	-110.14	110.12	95.26	40°04'20.608"N	104°40'45.274"W	1.95	
1421.00	14.250	41.740	1407.06	-127.71	127.69	110.19	40°04'20.782"N	104°40'45.082"W	0.84	
1516.00	15.040	41.110	1498.98	-145.72	145.70	126.07	40°04'20.960"N	104°40'44.877"W	0.85	
1610.00	15.710	42.410	1589.61	-164.31	164.29	142.68	40°04'21.144"N	104°40'44.664"W	0.80	
1705.00	15.830	43.540	1681.04	-183.20	183.17	160.28	40°04'21.330"N	104°40'44.437"W	0.35	
1800.00	15.040	42.530	1772.61	-201.68	201.65	177.53	40°04'21.513"N	104°40'44.215"W	0.88	TIE-ONTO MWD SURVEYS
1955.00	14.440	40.780	1922.51	-231.14	231.11	203.75	40°04'21.804"N	104°40'43.878"W	0.48	BEGIN BHI MWD+IFR SURVEYS
2049.00	14.720	43.170	2013.48	-248.73	248.69	219.58	40°04'21.978"N	104°40'43.674"W	0.71	
2144.00	15.710	43.210	2105.15	-266.91	266.87	236.64	40°04'22.157"N	104°40'43.455"W	1.04	
2239.00	15.260	42.130	2196.70	-285.56	285.51	253.83	40°04'22.341"N	104°40'43.234"W	0.56	
2333.00	14.730	43.180	2287.50	-303.45	303.40	270.31	40°04'22.518"N	104°40'43.022"W	0.63	
2428.00	14.110	42.310	2379.51	-320.82	320.77	286.37	40°04'22.690"N	104°40'42.815"W	0.69	
2523.00	14.930	43.810	2471.47	-338.22	338.17	302.64	40°04'22.862"N	104°40'42.606"W	0.95	
2618.00	15.500	39.200	2563.15	-356.89	356.84	319.13	40°04'23.046"N	104°40'42.394"W	1.41	
2713.00	14.180	38.520	2654.98	-375.84	375.78	334.40	40°04'23.234"N	104°40'42.197"W	1.40	
2807.00	12.890	35.110	2746.36	-393.43	393.37	347.60	40°04'23.407"N	104°40'42.028"W	1.61	
2902.00	12.770	35.760	2838.99	-410.62	410.55	359.83	40°04'23.577"N	104°40'41.870"W	0.20	
2997.00	12.750	39.170	2931.65	-427.27	427.20	372.59	40°04'23.742"N	104°40'41.706"W	0.79	
3092.00	14.170	44.750	3024.04	-443.66	443.59	387.40	40°04'23.904"N	104°40'41.516"W	2.02	
3186.00	14.100	42.120	3115.19	-460.32	460.25	403.18	40°04'24.068"N	104°40'41.313"W	0.69	
3281.00	15.440	41.930	3207.05	-478.32	478.24	419.39	40°04'24.246"N	104°40'41.104"W	1.41	
3376.00	13.430	40.350	3299.05	-496.14	496.06	434.99	40°04'24.422"N	104°40'40.904"W	2.16	
3470.00	15.290	40.870	3390.11	-513.83	513.75	450.17	40°04'24.597"N	104°40'40.708"W	1.98	
3565.00	13.120	35.260	3482.20	-532.12	532.03	464.59	40°04'24.778"N	104°40'40.523"W	2.70	
3659.00	9.680	39.060	3574.34	-546.97	546.89	475.73	40°04'24.924"N	104°40'40.379"W	3.74	
3754.00	9.750	41.210	3667.97	-559.22	559.14	486.06	40°04'25.045"N	104°40'40.247"W	0.39	
3849.00	10.410	40.370	3761.51	-571.82	571.73	496.92	40°04'25.170"N	104°40'40.107"W	0.71	
3944.00	9.830	34.270	3855.03	-585.06	584.97	507.05	40°04'25.301"N	104°40'39.977"W	1.28	
4038.00	9.250	29.590	3947.73	-598.26	598.17	515.30	40°04'25.431"N	104°40'39.870"W	1.03	
4133.00	8.570	28.880	4041.59	-611.10	611.01	522.49	40°04'25.558"N	104°40'39.778"W	0.73	
4228.00	7.200	36.300	4135.69	-622.10	622.01	529.43	40°04'25.667"N	104°40'39.689"W	1.79	



Actual Wellpath Report

ENGLISH FARMS 34C-9HZ AWP
Page 3 of 6



REFERENCE WELLPATH IDENTIFICATION

Operator	KERR-MCGEE OIL & GAS ONSHORE LP (WA)	Slot	SLOT#24 ENGLISH FARMS 34C-9HZ (451'FNL & 322'FEL, SEC.08)
Area	COLORADO	Well	ENGLISH FARMS 34C-9HZ
Field	WELD COUNTY (UTM/TRUE NORTH)	Wellbore	ENGLISH FARMS 34C-9HZ AWB <12120>
Facility	SEC.08-T1N-R65W		

WELLPATH DATA (121 stations) † = interpolated/extrapolated station

MD [ft]	Inclination [°]	Azimuth [°]	TVD [ft]	Vert Sect [ft]	North [ft]	East [ft]	Latitude	Longitude	DLS [°/100ft]	Comments
4323.00	5.320	28.640	4230.12	-630.76	630.67	535.07	40°04'25.752"N	104°40'39.616"W	2.16	
4417.00	2.380	19.420	4323.90	-636.43	636.34	537.81	40°04'25.808"N	104°40'39.581"W	3.19	
4511.00	0.390	82.270	4417.87	-638.32	638.22	538.77	40°04'25.827"N	104°40'39.569"W	2.37	
4890.00	0.960	11.150	4796.84	-641.60	641.51	540.66	40°04'25.859"N	104°40'39.544"W	0.24	
5268.00	1.760	45.560	5174.74	-648.78	648.68	545.42	40°04'25.930"N	104°40'39.483"W	0.29	
5647.00	0.800	38.840	5553.64	-654.91	654.82	551.24	40°04'25.991"N	104°40'39.408"W	0.26	
6026.00	0.590	20.170	5932.61	-658.81	658.71	553.57	40°04'26.029"N	104°40'39.378"W	0.08	
6404.00	0.400	294.460	6310.60	-661.18	661.08	553.04	40°04'26.053"N	104°40'39.385"W	0.18	
6594.00	0.490	302.100	6500.60	-661.89	661.79	551.75	40°04'26.060"N	104°40'39.402"W	0.06	
6689.00	0.350	342.450	6595.60	-662.38	662.28	551.31	40°04'26.065"N	104°40'39.407"W	0.33	
6783.00	6.620	190.170	6689.40	-657.31	657.22	550.27	40°04'26.015"N	104°40'39.421"W	7.37	
6878.00	14.430	197.020	6782.73	-640.58	640.48	545.83	40°04'25.849"N	104°40'39.478"W	8.31	
6973.00	20.960	187.880	6873.20	-612.39	612.30	540.03	40°04'25.571"N	104°40'39.552"W	7.45	
7034.00†	26.266	184.450	6929.08	-588.11	588.01	537.48	40°04'25.331"N	104°40'39.585"W	8.98	SSPG
7062.00†	28.722	183.278	6953.91	-575.21	575.12	536.62	40°04'25.203"N	104°40'39.596"W	8.98	NBRR
7068.00	29.250	183.050	6959.16	-572.31	572.21	536.46	40°04'25.175"N	104°40'39.598"W	8.98	
7163.00	37.210	178.440	7038.58	-520.33	520.23	536.00	40°04'24.661"N	104°40'39.604"W	8.79	
7192.00†	39.885	177.795	7061.25	-502.27	502.17	536.60	40°04'24.483"N	104°40'39.596"W	9.33	N470_B_CK
7257.00	45.890	176.580	7108.86	-458.11	458.01	538.80	40°04'24.046"N	104°40'39.568"W	9.33	
7289.00†	49.157	177.325	7130.47	-434.54	434.45	540.05	40°04'23.813"N	104°40'39.552"W	10.35	N700_C_CK
7352.00	55.600	178.600	7168.90	-384.70	384.61	541.80	40°04'23.321"N	104°40'39.530"W	10.35	
7447.00	65.450	183.640	7215.61	-302.16	302.06	540.01	40°04'22.505"N	104°40'39.553"W	11.35	
7542.00	72.240	183.110	7249.88	-213.76	213.67	534.80	40°04'21.631"N	104°40'39.620"W	7.17	
7582.00†	74.680	182.181	7261.27	-175.46	175.37	533.03	40°04'21.253"N	104°40'39.642"W	6.49	FRHS
7636.00	77.980	180.960	7274.03	-123.02	122.93	531.60	40°04'20.735"N	104°40'39.661"W	6.49	
7666.00†	79.536	180.837	7279.87	-93.60	93.51	531.14	40°04'20.444"N	104°40'39.667"W	5.20	CDLL
7732.00	82.960	180.570	7289.91	-28.38	28.29	530.34	40°04'19.800"N	104°40'39.677"W	5.20	
7780.00†	86.100	180.688	7294.49	19.39	-19.48	529.81	40°04'19.327"N	104°40'39.684"W	6.55	LANDING POINT
7781.00†	86.166	180.690	7294.56	20.39	-20.48	529.80	40°04'19.318"N	104°40'39.684"W	6.55	ENTERED LAND BOX
7826.00	89.110	180.800	7296.41	65.34	-65.43	529.22	40°04'18.873"N	104°40'39.692"W	6.55	
7921.00	89.970	180.310	7297.17	160.33	-160.42	528.30	40°04'17.935"N	104°40'39.703"W	1.04	
8016.00	90.740	181.350	7296.59	255.32	-255.41	526.92	40°04'16.996"N	104°40'39.721"W	1.36	
8111.00	91.230	181.230	7294.95	350.28	-350.37	524.78	40°04'16.057"N	104°40'39.749"W	0.53	
8206.00	91.080	178.110	7293.04	445.25	-445.34	525.33	40°04'15.119"N	104°40'39.742"W	3.29	
8300.00	90.150	177.460	7292.03	539.17	-539.26	528.96	40°04'14.191"N	104°40'39.695"W	1.21	
8395.00	90.710	176.960	7291.32	634.05	-634.15	533.59	40°04'13.253"N	104°40'39.636"W	0.79	
8489.00	89.970	178.480	7290.76	727.97	-728.07	537.33	40°04'12.325"N	104°40'39.587"W	1.80	
8584.00	89.720	179.380	7291.01	822.95	-823.05	539.10	40°04'11.386"N	104°40'39.565"W	0.98	
8679.00	90.030	180.560	7291.22	917.95	-918.05	539.15	40°04'10.448"N	104°40'39.564"W	1.28	
8773.00	90.400	180.860	7290.87	1011.94	-1012.04	537.99	40°04'09.519"N	104°40'39.579"W	0.51	
8868.00	88.550	182.690	7291.74	1106.89	-1106.98	535.04	40°04'08.581"N	104°40'39.617"W	2.74	
8962.00	88.890	183.570	7293.84	1200.72	-1200.82	529.91	40°04'07.653"N	104°40'39.683"W	1.00	
9057.00	88.620	184.440	7295.90	1295.47	-1295.56	523.28	40°04'06.717"N	104°40'39.768"W	0.96	
9151.00	90.150	181.020	7296.91	1389.34	-1389.43	518.80	40°04'05.789"N	104°40'39.826"W	3.99	
9246.00	90.180	181.450	7296.64	1484.32	-1484.41	516.76	40°04'04.851"N	104°40'39.852"W	0.45	



Actual Wellpath Report

ENGLISH FARMS 34C-9HZ AWP
Page 4 of 6



REFERENCE WELLPATH IDENTIFICATION

Operator	KERR-MCGEE OIL & GAS ONSHORE LP (WA)	Slot	SLOT#24 ENGLISH FARMS 34C-9HZ (451'FNL & 322'FEL, SEC.08)
Area	COLORADO	Well	ENGLISH FARMS 34C-9HZ
Field	WELD COUNTY (UTM/TRUE NORTH)	Wellbore	ENGLISH FARMS 34C-9HZ AWB <12120>
Facility	SEC.08-T1N-R65W		

WELLPATH DATA (121 stations)

MD [ft]	Inclination [°]	Azimuth [°]	TVD [ft]	Vert Sect [ft]	North [ft]	East [ft]	Latitude	Longitude	DLS [°/100ft]	Comments
9341.00	90.000	181.490	7296.49	1579.29	-1579.38	514.32	40°04'03.912"N	104°40'39.884"W	0.19	
9436.00	90.060	181.950	7296.44	1674.25	-1674.33	511.47	40°04'02.974"N	104°40'39.920"W	0.49	
9530.00	90.280	181.760	7296.16	1768.20	-1768.29	508.42	40°04'02.045"N	104°40'39.960"W	0.31	
9625.00	90.490	181.150	7295.52	1863.16	-1863.25	506.01	40°04'01.107"N	104°40'39.991"W	0.68	
9720.00	92.400	178.190	7293.13	1958.12	-1958.21	506.56	40°04'00.169"N	104°40'39.984"W	3.71	
9814.00	88.950	177.400	7292.02	2052.03	-2052.11	510.17	40°03'59.241"N	104°40'39.937"W	3.77	
9909.00	89.020	177.170	7293.70	2146.90	-2146.99	514.67	40°03'58.303"N	104°40'39.879"W	0.25	
10004.00	89.200	175.740	7295.18	2241.71	-2241.80	520.55	40°03'57.366"N	104°40'39.804"W	1.52	
10099.00	88.370	178.680	7297.19	2336.56	-2336.65	525.17	40°03'56.429"N	104°40'39.744"W	3.22	
10193.00	88.400	177.690	7299.84	2430.47	-2430.57	528.15	40°03'55.501"N	104°40'39.706"W	1.05	
10288.00	88.270	177.890	7302.60	2525.36	-2525.46	531.81	40°03'54.563"N	104°40'39.659"W	0.25	
10383.00	88.180	177.500	7305.55	2620.24	-2620.33	535.63	40°03'53.625"N	104°40'39.610"W	0.42	
10477.00	87.750	176.180	7308.88	2714.03	-2714.13	540.80	40°03'52.698"N	104°40'39.543"W	1.48	
10572.00	87.690	175.100	7312.66	2808.68	-2808.78	548.02	40°03'51.763"N	104°40'39.450"W	1.14	
10667.00	87.320	177.280	7316.80	2903.37	-2903.47	554.33	40°03'50.827"N	104°40'39.369"W	2.33	
10761.00	90.770	176.850	7318.37	2997.22	-2997.32	559.14	40°03'49.900"N	104°40'39.308"W	3.70	
10856.00	91.480	178.980	7316.50	3092.13	-3092.23	562.59	40°03'48.962"N	104°40'39.263"W	2.36	
10951.00	90.650	178.640	7314.73	3187.10	-3187.20	564.57	40°03'48.023"N	104°40'39.238"W	0.94	
11046.00	91.820	181.360	7312.69	3282.06	-3282.16	564.57	40°03'47.085"N	104°40'39.238"W	3.12	
11141.00	92.220	180.060	7309.34	3377.00	-3377.09	563.39	40°03'46.147"N	104°40'39.253"W	1.43	
11236.00	91.630	183.500	7306.15	3471.88	-3471.98	560.44	40°03'45.209"N	104°40'39.291"W	3.67	
11331.00	91.970	182.860	7303.16	3566.69	-3566.79	555.17	40°03'44.272"N	104°40'39.359"W	0.76	
11426.00	90.890	182.800	7300.79	3661.54	-3661.64	550.49	40°03'43.335"N	104°40'39.419"W	1.14	
11520.00	91.570	182.290	7298.77	3755.43	-3755.52	546.31	40°03'42.407"N	104°40'39.473"W	0.90	
11615.00	91.790	181.850	7295.99	3850.33	-3850.42	542.88	40°03'41.469"N	104°40'39.517"W	0.52	
11710.00	90.180	180.900	7294.35	3945.28	-3945.38	540.60	40°03'40.531"N	104°40'39.546"W	1.97	
11805.00	90.550	181.150	7293.75	4040.26	-4040.36	538.90	40°03'39.592"N	104°40'39.568"W	0.47	
11900.00	91.020	180.960	7292.45	4135.24	-4135.33	537.16	40°03'38.654"N	104°40'39.591"W	0.53	
11994.00	91.290	180.620	7290.55	4229.21	-4229.30	535.86	40°03'37.725"N	104°40'39.607"W	0.46	
12073.00	91.350	179.880	7288.73	4308.19	-4308.28	535.52	40°03'36.945"N	104°40'39.612"W	0.94	LAST BHI MWD+IFR SURVEYS
12120.00	91.350	179.880	7287.63	4355.18	-4355.27	535.61	40°03'36.480"N	104°40'39.610"W	0.00	PROJECTION TO BIT

HOLE & CASING SECTIONS - Ref Wellbore: ENGLISH FARMS 34C-9HZ AWB <12120> Ref Wellpath: ENGLISH FARMS 34C-9HZ AWP

String/Diameter	Start MD [ft]	End MD [ft]	Interval [ft]	Start TVD [ft]	End TVD [ft]	Start N/S [ft]	Start E/W [ft]	End N/S [ft]	End E/W [ft]
13.5in Open Hole	16.00	1875.00	1859.00	16.00	1845.09	0.00	0.00	215.95	190.46
9.625in Casing Surface	16.00	1865.00	1849.00	16.00	1835.42	0.00	0.00	214.05	188.77
7.875in Open Hole	1875.00	12120.00	10245.00	1845.09	7287.63	215.95	190.46	-4355.27	535.61



Actual Wellpath Report

ENGLISH FARMS 34C-9HZ AWP
Page 5 of 6



REFERENCE WELLPATH IDENTIFICATION			
Operator	KERR-MCGEE OIL & GAS ONSHORE LP (WA)	Slot	SLOT#24 ENGLISH FARMS 34C-9HZ (451'FNL & 322'FEL, SEC.08)
Area	COLORADO	Well	ENGLISH FARMS 34C-9HZ
Field	WELD COUNTY (UTM/TRUE NORTH)	Wellbore	ENGLISH FARMS 34C-9HZ AWB <12120>
Facility	SEC.08-T1N-R65W		

TARGETS								
Name	TVD [ft]	North [ft]	East [ft]	Grid East [US ft]	Grid North [US ft]	Latitude	Longitude	Shape
SEC.05-T1N-R65W SECTION LINES	7098.00	804.46	-2030.07	1728023.23	14553942.30	40°04'27.469"N	104°41'12.613"W	polygon
SEC.08-T1N-R65W SECTION LINES	7098.00	79.47	-4085.21	1725971.51	14553210.20	40°04'20.302"N	104°41'39.048"W	polygon
SEC.09-T1N-R65W SECTION LINES	7098.00	38.66	-46.18	1730009.08	14553183.94	40°04'19.902"N	104°40'47.093"W	polygon
ENGLISH FARMS 34C-9HZ BHL ON PLAT REV-1 (464'FSL & 231'FWL, SEC.09)	7288.00	-4397.68	538.30	1730609.29	14548751.49	40°03'36.061"N	104°40'39.576"W	point
ENGLISH FARMS 34C-9HZ LANDBOX	7288.00	0.00	0.00	1730055.38	14553145.47	40°04'19.520"N	104°40'46.499"W	polygon

WELLPATH COMPOSITION - Ref Wellbore: ENGLISH FARMS 34C-9HZ AWB <12120> Ref Wellpath: ENGLISH FARMS 34C-9HZ AWP				
Start MD [ft]	End MD [ft]	Positional Uncertainty Model	Log Name/Comment	Wellbore
16.00	1800.00	Custom_APC_ISCWSA REV 2 MWD	SDI MWD SURVEYS 13.5" <98-1800>	ENGLISH FARMS 34C-9HZ AWB <12120>
1800.00	12073.00	Custom APC_ISCWSA REV 2 MWD+IFR1+SC (approximation)	BHI MWD+IFR SURVEYS 7.875" <1955-12073>	ENGLISH FARMS 34C-9HZ AWB <12120>
12073.00	12120.00	Blind Drilling (std)	Projection to bit	ENGLISH FARMS 34C-9HZ AWB <12120>

REFERENCE WELLPATH IDENTIFICATION

Operator	KERR-MCGEE OIL & GAS ONSHORE LP (WA)	Slot	SLOT#24 ENGLISH FARMS 34C-9HZ (451'FNL & 322'FEL, SEC.08)
Area	COLORADO	Well	ENGLISH FARMS 34C-9HZ
Field	WELD COUNTY (UTM/TRUE NORTH)	Wellbore	ENGLISH FARMS 34C-9HZ AWB <12120>
Facility	SEC.08-T1N-R65W		

WELLPATH COMMENTS

MD [ft]	Inclination [°]	Azimuth [°]	TVD [ft]	Comment
98.00	0.240	258.500	98.00	BEGIN MWD SURVEYS
1800.00	15.040	42.530	1772.61	TIE-ONTO MWD SURVEYS
1955.00	14.440	40.780	1922.51	BEGIN BHI MWD+IFR SURVEYS
7034.00	26.266	184.450	6929.08	SSPG
7062.00	28.722	183.278	6953.91	NBRR
7192.00	39.885	177.795	7061.25	N470_B_CK
7289.00	49.157	177.325	7130.47	N700_C_CK
7582.00	74.680	182.181	7261.27	FRHS
7666.00	79.536	180.837	7279.87	CDLL
7780.00	86.100	180.688	7294.49	LANDING POINT
7781.00	86.166	180.690	7294.56	ENTERED LAND BOX
12073.00	91.350	179.880	7288.73	LAST BHI MWD+IFR SURVEYS
12120.00	91.350	179.880	7287.63	PROJECTION TO BIT