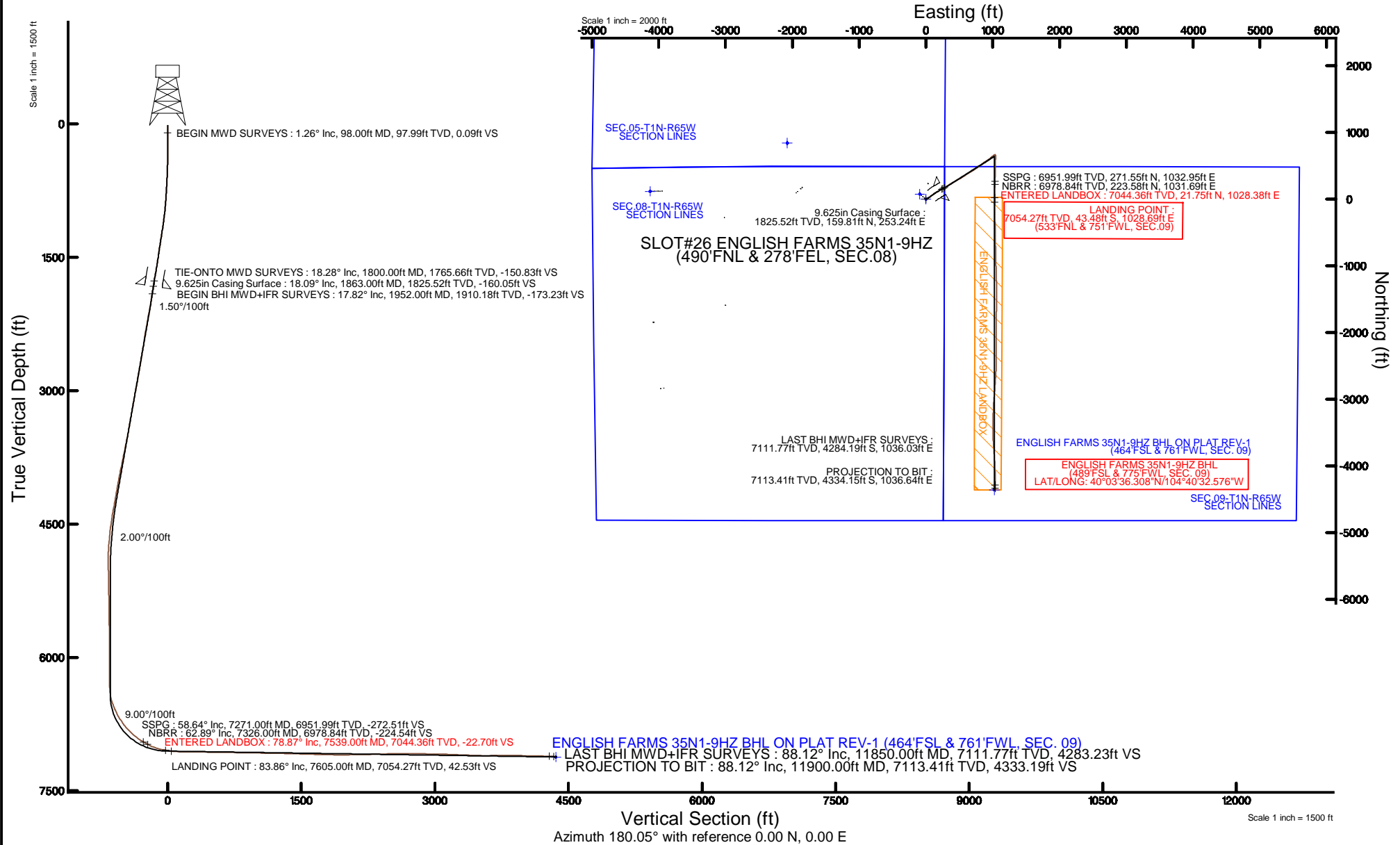


# KERR-MCGEE OIL & GAS ONSHORE LP (WA)

Location: COLORADO Slot: SLOT#26 ENGLISH FARMS 35N1-9HZ (490'FNL & 278'FEL, SEC.08)  
 Field: WELD COUNTY (UTM/TRUE NORTH) Well: ENGLISH FARMS 35N1-9HZ  
 Facility: SEC.08-T1N-R65W Wellbore: ENGLISH FARMS 35N1-9HZ PWB

Plot reference wellpath is ENGLISH FARMS 35N1-9HZ (REV-B.0) PWB

True vertical depths are referenced to XTREME 24 (16'KB) (RKB)	Grid System: NAD83 / UTM Zone 13 North, US feet
Measured depths are referenced to XTREME 24 (16'KB) (RKB)	North Reference: True north
XTREME 24 (16'KB) (RKB) to Mean Sea Level: 4948 feet	Scale: True distance
Mean Sea Level to Mud line (At Slot: SLOT#26 ENGLISH FARMS 35N1-9HZ (490'FNL & 278'FEL, SEC.08)): 0 feet	Depths are in feet
Coordinates are in feet referenced to Slot	Created by: amarcar on 27/Jul/2015





# Actual Wellpath Report

ENGLISH FARMS 35N1-9HZ AWP  
Page 1 of 6



REFERENCE WELLPATH IDENTIFICATION			
Operator	KERR-MCGEE OIL & GAS ONSHORE LP (WA)	Slot	SLOT#26 ENGLISH FARMS 35N1-9HZ (490'FNL & 278'FEL, SEC.08)
Area	COLORADO	Well	ENGLISH FARMS 35N1-9HZ
Field	WELD COUNTY (UTM/TRUE NORTH)	Wellbore	ENGLISH FARMS 35N1-9HZ AWB <11900>
Facility	SEC.08-T1N-R65W		

REPORT SETUP INFORMATION			
Projection System	NAD83 / UTM Zone 13 North, US feet	Software System	WellArchitect® 4.0.0
North Reference	True	User	Amarcar
Scale	0.999609	Report Generated	27/Jul/2015 at 14:44
Convergence at slot	0.21° East	Database/Source file	KERR MCGEE UTM/ENGLISH_FARMS_35N1-9HZ_AWB__11900_.xml

WELLPATH LOCATION						
	Local coordinates		Grid coordinates		Geographic coordinates	
	North[ft]	East[ft]	Easting[US ft]	Northing[US ft]	Latitude	Longitude
Slot Location	267.05	380.93	1730101.45	14553107.10	40°04'19.139"N	104°40'45.908"W
Facility Reference Pt			1729721.63	14552838.79	40°04'16.500"N	104°40'50.808"W
Field Reference Pt			1698235.31	14552047.82	40°04'09.600"N	104°47'36.000"W

WELLPATH DATUM			
Calculation method	Minimum curvature	XTREME 24 (16'KB) (RKB) to Facility Vertical Datum	4948.00ft
Horizontal Reference Pt	Slot	XTREME 24 (16'KB) (RKB) to Mean Sea Level	4948.00ft
Vertical Reference Pt	XTREME 24 (16'KB) (RKB)	XTREME 24 (16'KB) (RKB) to Mud Line at Slot (SLOT#26 ENGLISH FARMS 35N1-9HZ (490'FNL & 278'FEL, SEC.08))	4948.00ft
MD Reference Pt	XTREME 24 (16'KB) (RKB)	Section Origin	N 0.00, E 0.00 ft
Field Vertical Reference	Mean Sea Level	Section Azimuth	180.05°

# Actual Wellpath Report

ENGLISH FARMS 35N1-9HZ AWP

Page 2 of 6

## REFERENCE WELLPATH IDENTIFICATION

Operator	KERR-MCGEE OIL & GAS ONSHORE LP (WA)	Slot	SLOT#26 ENGLISH FARMS 35N1-9HZ (490'FNL & 278'FEL, SEC.08)
Area	COLORADO	Well	ENGLISH FARMS 35N1-9HZ
Field	WELD COUNTY (UTM/TRUE NORTH)	Wellbore	ENGLISH FARMS 35N1-9HZ AWB <11900>
Facility	SEC.08-T1N-R65W		

## WELLPATH DATA (120 stations) † = interpolated/extrapolated station

MD [ft]	Inclination [°]	Azimuth [°]	TVD [ft]	Vert Sect [ft]	North [ft]	East [ft]	Latitude	Longitude	DLS ["/100ft]	Comments
0.00†	0.000	264.330	0.00	0.00	0.00	0.00	40°04'19.139"N	104°40'45.908"W	0.00	
16.00	0.000	264.330	16.00	0.00	0.00	0.00	40°04'19.139"N	104°40'45.908"W	0.00	
98.00	1.260	264.330	97.99	0.09	-0.09	-0.90	40°04'19.138"N	104°40'45.920"W	1.54	BEGIN MWD SURVEYS
189.00	0.620	274.070	188.98	0.16	-0.15	-2.38	40°04'19.137"N	104°40'45.939"W	0.72	
281.00	0.380	271.860	280.98	0.11	-0.11	-3.19	40°04'19.138"N	104°40'45.949"W	0.26	
376.00	1.290	72.900	375.97	-0.21	0.22	-2.48	40°04'19.141"N	104°40'45.940"W	1.74	
471.00	2.920	53.200	470.90	-1.98	1.98	0.48	40°04'19.159"N	104°40'45.902"W	1.85	
566.00	4.380	62.210	565.71	-5.13	5.12	5.63	40°04'19.190"N	104°40'45.836"W	1.65	
661.00	5.690	59.770	660.34	-9.20	9.18	12.91	40°04'19.230"N	104°40'45.742"W	1.40	
820.00	8.670	63.590	818.08	-18.51	18.49	30.46	40°04'19.322"N	104°40'45.516"W	1.90	
915.00	9.840	60.180	911.84	-25.75	25.71	43.91	40°04'19.393"N	104°40'45.343"W	1.36	
1009.00	11.200	55.260	1004.26	-34.96	34.90	58.38	40°04'19.484"N	104°40'45.157"W	1.73	
1104.00	12.690	54.760	1097.20	-46.25	46.18	74.49	40°04'19.595"N	104°40'44.950"W	1.57	
1199.00	14.060	52.260	1189.62	-59.35	59.27	92.14	40°04'19.725"N	104°40'44.723"W	1.57	
1294.00	15.110	53.490	1281.56	-73.80	73.70	111.21	40°04'19.867"N	104°40'44.477"W	1.15	
1389.00	15.000	55.670	1373.30	-88.12	88.00	131.32	40°04'20.009"N	104°40'44.219"W	0.61	
1484.00	15.680	59.180	1464.92	-101.65	101.51	152.50	40°04'20.142"N	104°40'43.946"W	1.21	
1579.00	16.990	57.900	1556.08	-115.63	115.46	175.28	40°04'20.280"N	104°40'43.653"W	1.43	
1707.00	19.440	59.890	1677.66	-136.28	136.09	209.55	40°04'20.484"N	104°40'43.212"W	1.97	
1800.00	18.280	62.400	1765.66	-150.83	150.61	235.87	40°04'20.627"N	104°40'42.874"W	1.52	TIE-ONTO MWD SURVEYS
1952.00	17.820	60.870	1910.18	-173.23	172.98	277.31	40°04'20.848"N	104°40'42.341"W	0.43	BEGIN BHI MWD+IFR SURVEYS
2047.00	17.950	57.750	2000.60	-188.15	187.87	302.39	40°04'20.996"N	104°40'42.018"W	1.02	
2141.00	19.120	59.100	2089.72	-203.80	203.50	327.85	40°04'21.150"N	104°40'41.691"W	1.33	
2236.00	18.880	57.450	2179.54	-220.09	219.76	354.16	40°04'21.311"N	104°40'41.352"W	0.62	
2331.00	18.250	57.900	2269.60	-236.29	235.94	379.71	40°04'21.471"N	104°40'41.024"W	0.68	
2426.00	17.250	58.150	2360.08	-251.65	251.27	404.28	40°04'21.622"N	104°40'40.708"W	1.06	
2520.00	17.350	61.080	2449.83	-265.80	265.41	428.39	40°04'21.762"N	104°40'40.398"W	0.93	
2615.00	19.090	62.390	2540.06	-279.88	279.46	454.56	40°04'21.901"N	104°40'40.061"W	1.88	
2710.00	19.500	59.750	2629.72	-295.09	294.65	482.02	40°04'22.051"N	104°40'39.708"W	1.01	
2805.00	18.960	59.320	2719.42	-310.98	310.51	508.99	40°04'22.207"N	104°40'39.361"W	0.59	
2899.00	17.530	60.160	2808.70	-325.84	325.34	534.40	40°04'22.354"N	104°40'39.034"W	1.55	
2994.00	18.150	57.260	2899.13	-340.98	340.47	559.26	40°04'22.503"N	104°40'38.714"W	1.14	
3089.00	19.260	55.850	2989.11	-357.81	357.27	584.67	40°04'22.669"N	104°40'38.387"W	1.26	
3184.00	19.100	57.100	3078.84	-375.07	374.50	610.69	40°04'22.840"N	104°40'38.052"W	0.46	
3278.00	18.930	59.180	3167.71	-391.26	390.67	636.70	40°04'23.000"N	104°40'37.718"W	0.74	
3373.00	18.360	59.640	3257.72	-406.74	406.13	662.84	40°04'23.152"N	104°40'37.382"W	0.62	
3467.00	18.420	59.580	3346.92	-421.77	421.13	688.42	40°04'23.301"N	104°40'37.053"W	0.07	
3562.00	18.560	56.230	3437.02	-437.79	437.13	713.93	40°04'23.459"N	104°40'36.724"W	1.13	
3657.00	18.200	55.780	3527.18	-454.56	453.88	738.77	40°04'23.624"N	104°40'36.405"W	0.41	
3751.00	18.780	52.980	3616.32	-471.95	471.25	762.99	40°04'23.796"N	104°40'36.093"W	1.13	
3846.00	18.540	53.160	3706.33	-490.24	489.51	787.29	40°04'23.976"N	104°40'35.781"W	0.26	
3941.00	19.410	54.290	3796.17	-508.53	507.78	812.19	40°04'24.157"N	104°40'35.460"W	0.99	
4036.00	18.070	49.250	3886.14	-527.39	526.61	836.17	40°04'24.343"N	104°40'35.152"W	2.21	
4130.00	18.770	57.040	3975.33	-545.15	544.36	859.91	40°04'24.518"N	104°40'34.847"W	2.72	
4225.00	18.800	58.500	4065.27	-561.49	560.67	885.79	40°04'24.680"N	104°40'34.514"W	0.50	



# Actual Wellpath Report

ENGLISH FARMS 35N1-9HZ AWP  
Page 3 of 6



## REFERENCE WELLPATH IDENTIFICATION

Operator	KERR-MCGEE OIL & GAS ONSHORE LP (WA)	Slot	SLOT#26 ENGLISH FARMS 35N1-9HZ (490'FNL & 278'FEL, SEC.08)
Area	COLORADO	Well	ENGLISH FARMS 35N1-9HZ
Field	WELD COUNTY (UTM/TRUE NORTH)	Wellbore	ENGLISH FARMS 35N1-9HZ AWB <11900>
Facility	SEC.08-T1N-R65W		

## WELLPATH DATA (120 stations) † = interpolated/extrapolated station

MD [ft]	Inclination [°]	Azimuth [°]	TVD [ft]	Vert Sect [ft]	North [ft]	East [ft]	Latitude	Longitude	DLS [°/100ft]	Comments
4320.00	18.560	57.870	4155.27	-577.56	576.71	911.64	40°04'24.838"N	104°40'34.181"W	0.33	
4414.00	17.870	56.840	4244.56	-593.42	592.56	936.39	40°04'24.995"N	104°40'33.863"W	0.81	
4508.00	15.960	50.390	4334.49	-609.58	608.69	958.42	40°04'25.154"N	104°40'33.579"W	2.85	
4603.00	12.380	47.070	4426.59	-624.86	623.96	975.94	40°04'25.305"N	104°40'33.354"W	3.86	
4698.00	11.920	46.240	4519.46	-638.60	637.68	990.49	40°04'25.440"N	104°40'33.167"W	0.52	
4792.00	8.840	53.550	4611.92	-649.62	648.69	1003.31	40°04'25.549"N	104°40'33.002"W	3.56	
4887.00	8.630	52.350	4705.82	-658.32	657.38	1014.83	40°04'25.635"N	104°40'32.854"W	0.29	
4982.00	6.420	63.340	4800.00	-665.06	664.12	1025.22	40°04'25.702"N	104°40'32.720"W	2.77	
5076.00	2.950	77.800	4893.67	-667.94	666.99	1032.28	40°04'25.730"N	104°40'32.629"W	3.87	
5171.00	2.320	141.530	4988.59	-666.96	666.00	1035.87	40°04'25.720"N	104°40'32.583"W	2.98	
5266.00	1.160	157.980	5083.54	-664.56	663.60	1037.42	40°04'25.697"N	104°40'32.563"W	1.32	
5550.00	1.010	169.460	5367.49	-659.44	658.47	1038.96	40°04'25.646"N	104°40'32.543"W	0.09	
5928.00	0.480	157.050	5745.46	-654.70	653.74	1040.19	40°04'25.599"N	104°40'32.528"W	0.15	
6212.00	0.460	126.840	6029.45	-652.93	651.96	1041.56	40°04'25.582"N	104°40'32.510"W	0.09	
6496.00	0.370	199.210	6313.44	-651.38	650.41	1042.17	40°04'25.566"N	104°40'32.502"W	0.17	
6591.00	6.610	182.570	6408.22	-645.62	644.66	1041.83	40°04'25.509"N	104°40'32.506"W	6.59	
6686.00	18.160	181.460	6500.85	-625.29	624.32	1041.20	40°04'25.308"N	104°40'32.515"W	12.16	
6781.00	24.740	180.700	6589.23	-590.57	589.61	1040.58	40°04'24.965"N	104°40'32.523"W	6.93	
6875.00	30.480	184.410	6672.49	-547.09	546.13	1038.51	40°04'24.536"N	104°40'32.549"W	6.37	
6970.00	36.260	181.530	6751.80	-494.94	493.98	1035.90	40°04'24.020"N	104°40'32.583"W	6.31	
7065.00	44.980	179.940	6823.84	-433.15	432.20	1035.18	40°04'23.410"N	104°40'32.592"W	9.24	
7160.00	50.550	180.860	6887.68	-362.85	361.89	1034.67	40°04'22.715"N	104°40'32.599"W	5.91	
7255.00	57.400	181.240	6943.52	-286.07	285.12	1033.25	40°04'21.956"N	104°40'32.617"W	7.22	
7271.00†	58.638	181.337	6951.99	-272.51	271.55	1032.95	40°04'21.822"N	104°40'32.621"W	7.75	SHARON SPRINGS
7326.00†	62.893	181.651	6978.84	-224.54	223.58	1031.69	40°04'21.348"N	104°40'32.637"W	7.75	NBRR
7350.00	64.750	181.780	6989.43	-203.01	202.06	1031.05	40°04'21.136"N	104°40'32.645"W	7.75	
7444.00	74.270	180.750	7022.30	-115.08	114.13	1029.13	40°04'20.267"N	104°40'32.670"W	10.18	
7539.00	78.870	180.180	7044.36	-22.70	21.75	1028.38	40°04'19.354"N	104°40'32.680"W	4.88	ENTERED LANDBOX
7605.00†	83.858	179.287	7054.27	42.53	-43.48	1028.69	40°04'18.709"N	104°40'32.676"W	7.67	LANDING POINT
7634.00	86.050	178.900	7056.82	71.41	-72.36	1029.15	40°04'18.424"N	104°40'32.670"W	7.67	
7729.00	87.380	179.000	7062.26	166.23	-167.19	1030.89	40°04'17.487"N	104°40'32.648"W	1.40	
7823.00	89.750	179.050	7064.61	260.18	-261.14	1032.49	40°04'16.558"N	104°40'32.627"W	2.52	
7918.00	90.310	178.690	7064.56	355.16	-356.12	1034.36	40°04'15.620"N	104°40'32.603"W	0.70	
8013.00	89.260	178.660	7064.92	450.13	-451.09	1036.56	40°04'14.681"N	104°40'32.575"W	1.11	
8108.00	89.510	178.480	7065.94	545.09	-546.05	1038.93	40°04'13.743"N	104°40'32.544"W	0.32	
8203.00	88.640	179.900	7067.47	640.07	-641.03	1040.27	40°04'12.804"N	104°40'32.527"W	1.75	
8297.00	88.950	179.260	7069.45	734.04	-735.00	1040.96	40°04'11.875"N	104°40'32.518"W	0.76	
8392.00	88.980	178.720	7071.17	829.01	-829.97	1042.63	40°04'10.937"N	104°40'32.497"W	0.57	
8486.00	89.170	178.240	7072.68	922.96	-923.93	1045.13	40°04'10.008"N	104°40'32.465"W	0.55	
8581.00	88.890	178.390	7074.29	1017.90	-1018.87	1047.92	40°04'09.070"N	104°40'32.429"W	0.33	
8676.00	88.610	178.580	7076.36	1112.85	-1113.82	1050.43	40°04'08.132"N	104°40'32.397"W	0.36	
8770.00	88.830	178.020	7078.46	1206.78	-1207.75	1053.22	40°04'07.204"N	104°40'32.361"W	0.64	
8865.00	89.510	177.250	7079.84	1301.68	-1302.66	1057.14	40°04'06.266"N	104°40'32.311"W	1.08	
8959.00	87.840	180.270	7082.01	1395.62	-1396.60	1059.17	40°04'05.337"N	104°40'32.284"W	3.67	
9054.00	88.150	181.380	7085.34	1490.55	-1491.53	1057.80	40°04'04.399"N	104°40'32.302"W	1.21	



# Actual Wellpath Report

ENGLISH FARMS 35N1-9HZ AWP  
Page 4 of 6



### REFERENCE WELLPATH IDENTIFICATION

Operator	KERR-MCGEE OIL & GAS ONSHORE LP (WA)	Slot	SLOT#26 ENGLISH FARMS 35N1-9HZ (490°FNL & 278°FEL, SEC.08)
Area	COLORADO	Well	ENGLISH FARMS 35N1-9HZ
Field	WELD COUNTY (UTM/TRUE NORTH)	Wellbore	ENGLISH FARMS 35N1-9HZ AWB <11900>
Facility	SEC.08-T1N-R65W		

### WELLPATH DATA (120 stations)

MD [ft]	Inclination [°]	Azimuth [°]	TVD [ft]	Vert Sect [ft]	North [ft]	East [ft]	Latitude	Longitude	DLS [°/100ft]	Comments
9148.00	88.340	181.230	7088.22	1584.48	-1585.46	1055.67	40°04'03.471"N	104°40'32.330"W	0.26	
9243.00	88.490	180.750	7090.85	1679.43	-1680.41	1054.02	40°04'02.533"N	104°40'32.351"W	0.53	
9338.00	88.830	180.410	7093.07	1774.40	-1775.38	1053.06	40°04'01.594"N	104°40'32.363"W	0.51	
9433.00	88.860	179.760	7094.98	1869.38	-1870.36	1052.92	40°04'00.656"N	104°40'32.365"W	0.68	
9528.00	90.280	181.340	7095.69	1964.37	-1965.35	1052.01	40°03'59.717"N	104°40'32.377"W	2.24	
9622.00	90.960	180.800	7094.68	2058.35	-2059.32	1050.25	40°03'58.788"N	104°40'32.400"W	0.92	
9717.00	91.230	180.370	7092.86	2153.33	-2154.30	1049.29	40°03'57.850"N	104°40'32.412"W	0.53	
9811.00	91.320	179.990	7090.77	2247.31	-2248.28	1048.99	40°03'56.921"N	104°40'32.416"W	0.42	
9906.00	91.450	179.570	7088.47	2342.28	-2343.25	1049.35	40°03'55.982"N	104°40'32.411"W	0.46	
10001.00	92.000	179.430	7085.61	2437.23	-2438.20	1050.18	40°03'55.044"N	104°40'32.401"W	0.60	
10096.00	91.170	181.910	7082.99	2532.18	-2533.15	1049.07	40°03'54.106"N	104°40'32.415"W	2.75	
10191.00	89.540	183.900	7082.40	2627.05	-2628.02	1044.26	40°03'53.168"N	104°40'32.477"W	2.71	
10285.00	90.770	183.480	7082.14	2720.86	-2721.82	1038.21	40°03'52.241"N	104°40'32.555"W	1.38	
10380.00	88.310	184.350	7082.91	2815.63	-2816.59	1031.72	40°03'51.305"N	104°40'32.638"W	2.75	
10474.00	89.260	184.620	7084.90	2909.33	-2910.28	1024.37	40°03'50.379"N	104°40'32.733"W	1.05	
10569.00	89.630	184.350	7085.82	3004.04	-3004.98	1016.95	40°03'49.443"N	104°40'32.828"W	0.48	
10664.00	87.810	182.420	7087.94	3098.85	-3099.78	1011.34	40°03'48.506"N	104°40'32.901"W	2.79	
10759.00	87.470	182.190	7091.85	3193.69	-3194.63	1007.52	40°03'47.569"N	104°40'32.950"W	0.43	
10853.00	87.850	181.700	7095.69	3287.56	-3288.49	1004.33	40°03'46.641"N	104°40'32.991"W	0.66	
10948.00	87.260	181.380	7099.74	3382.44	-3383.37	1001.78	40°03'45.704"N	104°40'33.024"W	0.71	
11043.00	87.970	178.890	7103.70	3477.35	-3478.28	1001.56	40°03'44.766"N	104°40'33.027"W	2.72	
11138.00	90.280	177.170	7105.15	3572.27	-3573.21	1004.82	40°03'43.828"N	104°40'32.985"W	3.03	
11233.00	90.740	175.950	7104.30	3667.09	-3668.03	1010.52	40°03'42.891"N	104°40'32.911"W	1.37	
11328.00	89.570	176.330	7104.05	3761.87	-3762.81	1016.92	40°03'41.954"N	104°40'32.829"W	1.29	
11423.00	89.850	176.030	7104.53	3856.65	-3857.60	1023.25	40°03'41.017"N	104°40'32.748"W	0.43	
11518.00	89.880	176.270	7104.75	3951.43	-3952.38	1029.63	40°03'40.081"N	104°40'32.666"W	0.25	
11612.00	89.480	179.080	7105.28	4045.34	-4046.29	1033.44	40°03'39.152"N	104°40'32.617"W	3.02	
11707.00	88.210	179.540	7107.19	4140.31	-4141.27	1034.58	40°03'38.214"N	104°40'32.602"W	1.42	
11850.00	88.120	179.300	7111.77	4283.23	-4284.19	1036.03	40°03'36.802"N	104°40'32.584"W	0.18	LAST BHI MWD+IFR SURVEYS
11900.00	88.120	179.300	7113.41	4333.19	-4334.15	1036.64	40°03'36.308"N	104°40'32.576"W	0.00	PROJECTION TO BIT

### HOLE & CASING SECTIONS - Ref Wellbore: ENGLISH FARMS 35N1-9HZ AWB <11900> Ref Wellpath: ENGLISH FARMS 35N1-9HZ AWP

String/Diameter	Start MD [ft]	End MD [ft]	Interval [ft]	Start TVD [ft]	End TVD [ft]	Start N/S [ft]	Start E/W [ft]	End N/S [ft]	End E/W [ft]
13.5in Open Hole	16.00	1873.00	1857.00	16.00	1835.03	0.00	0.00	161.28	255.97
9.625in Casing Surface	16.00	1863.00	1847.00	16.00	1825.52	0.00	0.00	159.81	253.24
7.875in Open Hole	1873.00	11900.00	10027.00	1835.03	7113.41	161.28	255.97	-4334.15	1036.64



# Actual Wellpath Report

ENGLISH FARMS 35N1-9HZ AWP

Page 5 of 6



## REFERENCE WELLPATH IDENTIFICATION

Operator	KERR-MCGEE OIL & GAS ONSHORE LP (WA)	Slot	SLOT#26 ENGLISH FARMS 35N1-9HZ (490'FNL & 278'FEL, SEC.08)
Area	COLORADO	Well	ENGLISH FARMS 35N1-9HZ
Field	WELD COUNTY (UTM/TRUE NORTH)	Wellbore	ENGLISH FARMS 35N1-9HZ AWB <11900>
Facility	SEC.08-T1N-R65W		

## TARGETS

Name	TVD [ft]	North [ft]	East [ft]	Grid East [US ft]	Grid North [US ft]	Latitude	Longitude	Shape
SEC.05-T1N-R65W SECTION LINES	7098.00	843.02	-2076.02	1728023.23	14553942.30	40°04'27.469"N	104°41'12.613"W	polygon
SEC.08-T1N-R65W SECTION LINES	7098.00	118.03	-4131.16	1725971.51	14553210.20	40°04'20.302"N	104°41'39.048"W	polygon
SEC.09-T1N-R65W SECTION LINES	7098.00	77.21	-92.12	1730009.08	14553183.94	40°04'19.902"N	104°40'47.093"W	polygon
ENGLISH FARMS 35N1-9HZ BHL ON PLAT REV-1 (464'FSL & 761'FWL, SEC. 09)	7120.00	-4359.11	1022.23	1731138.96	14548753.41	40°03'36.061"N	104°40'32.761"W	point
ENGLISH FARMS 35N1-9HZ LANDBOX	7120.00	0.00	0.00	1730101.45	14553107.10	40°04'19.139"N	104°40'45.908"W	polygon

## WELLPATH COMPOSITION - Ref Wellbore: ENGLISH FARMS 35N1-9HZ AWB <11900> Ref Wellpath: ENGLISH FARMS 35N1-9HZ AWP

Start MD [ft]	End MD [ft]	Positional Uncertainty Model	Log Name/Comment	Wellbore
16.00	1800.00	Custom_APC_ISCWSA REV 2 MWD	SDI MWD SURVEYS 13.5" <98-1800>	ENGLISH FARMS 35N1-9HZ AWB <11900>
1800.00	11850.00	Custom APC_ISCWSA REV 2 MWD+IFR1+SC (approximation)	BHI MWD+IFR SURVEYS 7.875" <1952-11850>	ENGLISH FARMS 35N1-9HZ AWB <11900>
11850.00	11900.00	Blind Drilling (std)	Projection to bit	ENGLISH FARMS 35N1-9HZ AWB <11900>



# Actual Wellpath Report

ENGLISH FARMS 35N1-9HZ AWP  
Page 6 of 6



### REFERENCE WELLPATH IDENTIFICATION

Operator	KERR-MCGEE OIL & GAS ONSHORE LP (WA)	Slot	SLOT#26 ENGLISH FARMS 35N1-9HZ (490'FNL & 278'FEL, SEC.08)
Area	COLORADO	Well	ENGLISH FARMS 35N1-9HZ
Field	WELD COUNTY (UTM/TRUE NORTH)	Wellbore	ENGLISH FARMS 35N1-9HZ AWB <11900>
Facility	SEC.08-T1N-R65W		

### WELLPATH COMMENTS

MD [ft]	Inclination [°]	Azimuth [°]	TVD [ft]	Comment
98.00	1.260	264.330	97.99	BEGIN MWD SURVEYS
1800.00	18.280	62.400	1765.66	TIE-ONTO MWD SURVEYS
1952.00	17.820	60.870	1910.18	BEGIN BHI MWD+IFR SURVEYS
7271.00	58.638	181.337	6951.99	SHARON SPRINGS
7326.00	62.893	181.651	6978.84	NBRR
7539.00	78.870	180.180	7044.36	ENTERED LANDBOX
7605.00	83.858	179.287	7054.27	LANDING POINT
11850.00	88.120	179.300	7111.77	LAST BHI MWD+IFR SURVEYS
11900.00	88.120	179.300	7113.41	PROJECTION TO BIT