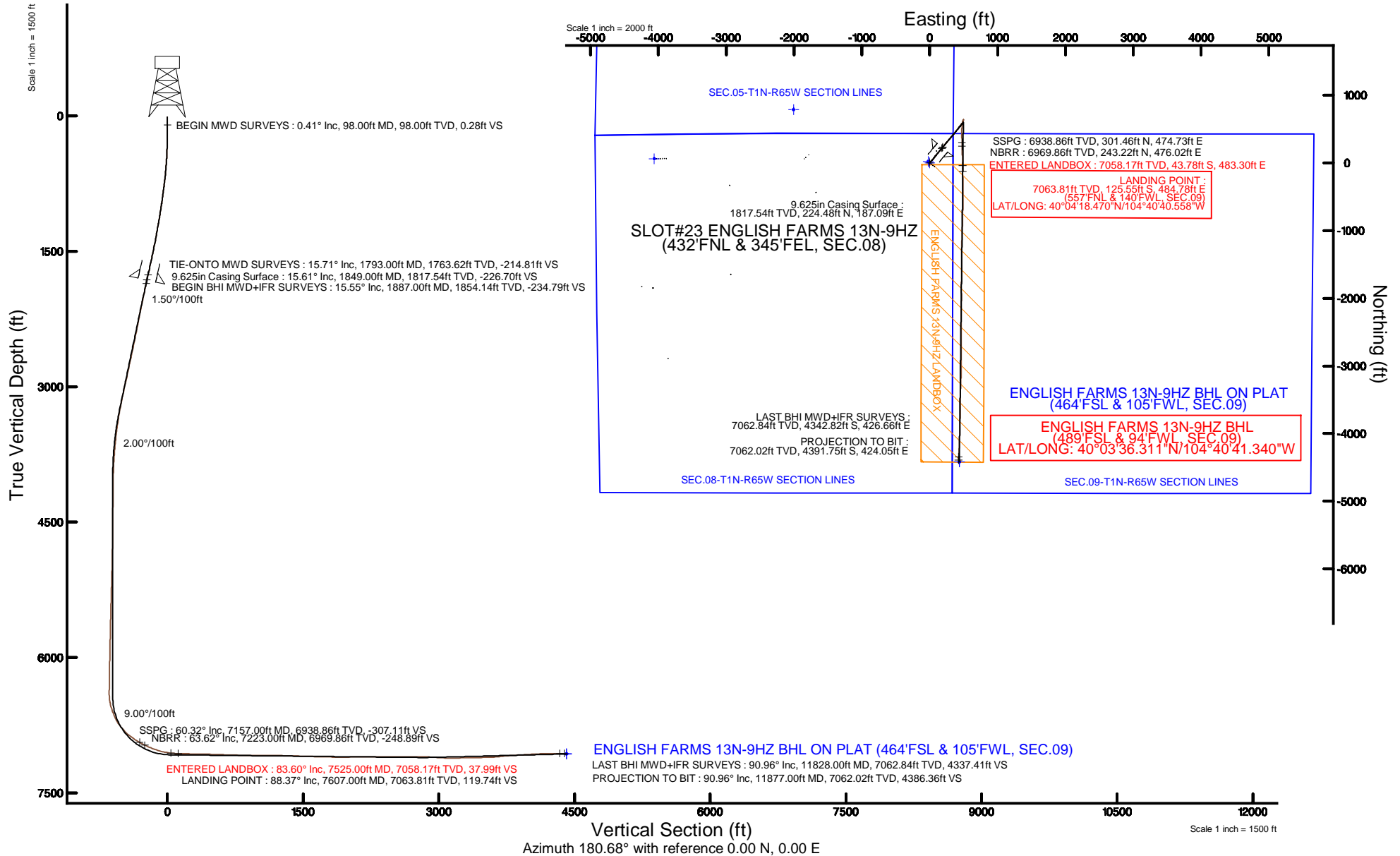


KERR-MCGEE OIL & GAS ONSHORE LP (WA)

Location: COLORADO Slot: SLOT#23 ENGLISH FARMS 13N-9HZ (432'FNL & 345'FEL, SEC.08)
 Field: WELD COUNTY (UTM/TRUE NORTH) Well: ENGLISH FARMS 13N-9HZ
 Facility: SEC.08-T1N-R65W Wellbore: ENGLISH FARMS 13N-9HZ PWB

Plot reference wellpath is ENGLISH FARMS 13N-9HZ (REV-C.0) PWB

True vertical depths are referenced to XTREME 24 (16'KB) (RKB)	Grid System: NAD83 / UTM Zone 13 North, US feet
Measured depths are referenced to XTREME 24 (16'KB) (RKB)	North Reference: True north
XTREME 24 (16'KB) (RKB) to Mean Sea Level: 4948 feet	Scale: True distance
Mean Sea Level to Mud line (At Slot: SLOT#23 ENGLISH FARMS 13N-9HZ (432'FNL & 345'FEL, SEC.08)): 0 feet	Depths are in feet
Coordinates are in feet referenced to Slot	Created by: amrcar on 04/Aug/2015





Actual Wellpath Report

ENGLISH FARMS 13N-9HZ AWP
Page 1 of 6



REFERENCE WELLPATH IDENTIFICATION			
Operator	KERR-MCGEE OIL & GAS ONSHORE LP (WA)	Slot	SLOT#23 ENGLISH FARMS 13N-9HZ (432'FNL & 345'FEL, SEC.08)
Area	COLORADO	Well	ENGLISH FARMS 13N-9HZ
Field	WELD COUNTY (UTM/TRUE NORTH)	Wellbore	ENGLISH FARMS 13N-9HZ AWB <11877>
Facility	SEC.08-T1N-R65W		

REPORT SETUP INFORMATION			
Projection System	NAD83 / UTM Zone 13 North, US feet	Software System	WellArchitect® 4.0.0
North Reference	True	User	Amarcar
Scale	0.999609	Report Generated	04/Aug/2015 at 10:08
Convergence at slot	0.21° East	Database/Source file	KERR MCGEE UTM/ENGLISH_FARMS_13N-9HZ_AWB_11877_.xml

WELLPATH LOCATION						
	Local coordinates		Grid coordinates		Geographic coordinates	
	North[ft]	East[ft]	Easting[US ft]	Northing[US ft]	Latitude	Longitude
Slot Location	324.93	312.05	1730032.39	14553164.71	40°04'19.711"N	104°40'46.794"W
Facility Reference Pt			1729721.63	14552838.79	40°04'16.500"N	104°40'50.808"W
Field Reference Pt			1698235.31	14552047.82	40°04'09.600"N	104°47'36.000"W

WELLPATH DATUM			
Calculation method	Minimum curvature	XTREME 24 (16'KB) (RKB) to Facility Vertical Datum	4948.00ft
Horizontal Reference Pt	Slot	XTREME 24 (16'KB) (RKB) to Mean Sea Level	4948.00ft
Vertical Reference Pt	XTREME 24 (16'KB) (RKB)	XTREME 24 (16'KB) (RKB) to Mud Line at Slot (SLOT#23 ENGLISH FARMS 13N-9HZ (432'FNL & 345'FEL, SEC.08))	4948.00ft
MD Reference Pt	XTREME 24 (16'KB) (RKB)	Section Origin	N 0.00, E 0.00 ft
Field Vertical Reference	Mean Sea Level	Section Azimuth	180.68°

REFERENCE WELLPATH IDENTIFICATION			
Operator	KERR-MCGEE OIL & GAS ONSHORE LP (WA)	Slot	SLOT#23 ENGLISH FARMS 13N-9HZ (432'FNL & 345'FEL, SEC.08)
Area	COLORADO	Well	ENGLISH FARMS 13N-9HZ
Field	WELD COUNTY (UTM/TRUE NORTH)	Wellbore	ENGLISH FARMS 13N-9HZ AWB <11877>
Facility	SEC.08-T1N-R65W		

WELLPATH DATA (112 stations) † = interpolated/extrapolated station										
MD [ft]	Inclination [°]	Azimuth [°]	TVD [ft]	Vert Sect [ft]	North [ft]	East [ft]	Latitude	Longitude	DLS [°/100ft]	Comments
0.00†	0.000	197.960	0.00	0.00	0.00	0.00	40°04'19.711"N	104°40'46.794"W	0.00	
16.00	0.000	197.960	16.00	0.00	0.00	0.00	40°04'19.711"N	104°40'46.794"W	0.00	
98.00	0.410	197.960	98.00	0.28	-0.28	-0.09	40°04'19.708"N	104°40'46.795"W	0.50	BEGIN MWD SURVEYS
189.00	0.780	38.600	189.00	0.10	-0.10	0.20	40°04'19.710"N	104°40'46.791"W	1.29	
281.00	1.470	37.760	280.98	-1.33	1.32	1.31	40°04'19.724"N	104°40'46.777"W	0.75	
376.00	3.160	44.210	375.90	-4.20	4.16	3.88	40°04'19.752"N	104°40'46.744"W	1.80	
471.00	4.590	40.080	470.68	-9.04	8.94	8.15	40°04'19.799"N	104°40'46.689"W	1.53	
566.00	6.040	39.830	565.27	-15.85	15.69	13.80	40°04'19.866"N	104°40'46.616"W	1.53	
693.00	8.060	43.860	691.30	-27.53	27.24	24.25	40°04'19.980"N	104°40'46.482"W	1.64	
788.00	9.620	41.990	785.17	-38.35	37.95	34.18	40°04'20.086"N	104°40'46.354"W	1.67	
883.00	10.220	41.620	878.75	-50.68	50.15	45.09	40°04'20.207"N	104°40'46.214"W	0.64	
978.00	10.470	35.960	972.21	-64.10	63.43	55.75	40°04'20.338"N	104°40'46.077"W	1.10	
1104.00	11.090	34.440	1095.98	-83.52	82.69	69.33	40°04'20.528"N	104°40'45.902"W	0.54	
1199.00	12.400	38.130	1188.99	-99.21	98.25	80.80	40°04'20.682"N	104°40'45.755"W	1.59	
1294.00	13.250	40.190	1281.62	-115.71	114.59	94.12	40°04'20.843"N	104°40'45.583"W	1.02	
1358.00	13.020	41.160	1343.95	-126.85	125.62	103.60	40°04'20.952"N	104°40'45.461"W	0.50	
1453.00	14.640	38.520	1436.19	-144.48	143.08	118.12	40°04'21.125"N	104°40'45.275"W	1.83	
1547.00	15.590	40.900	1526.94	-163.51	161.92	133.79	40°04'21.311"N	104°40'45.073"W	1.21	
1642.00	15.800	41.870	1618.40	-182.99	181.20	150.78	40°04'21.502"N	104°40'44.854"W	0.35	
1737.00	16.050	40.010	1709.75	-202.88	200.89	167.85	40°04'21.696"N	104°40'44.635"W	0.60	
1793.00	15.710	39.120	1763.62	-214.81	212.70	177.61	40°04'21.813"N	104°40'44.509"W	0.75	TIE-ONTO MWD SURVEYS
1887.00	15.550	38.020	1854.14	-234.79	232.50	193.40	40°04'22.009"N	104°40'44.306"W	0.36	BEGIN BHI MWD+IFR SURVEYS
1950.00	15.130	37.280	1914.90	-248.11	245.69	203.59	40°04'22.139"N	104°40'44.175"W	0.74	
2045.00	13.760	35.930	2006.89	-267.29	264.71	217.73	40°04'22.327"N	104°40'43.993"W	1.48	
2140.00	15.110	39.090	2098.89	-286.22	283.47	232.16	40°04'22.512"N	104°40'43.808"W	1.64	
2234.00	15.460	43.730	2189.57	-304.98	302.03	248.55	40°04'22.696"N	104°40'43.597"W	1.35	
2329.00	14.670	42.140	2281.30	-323.25	320.10	265.37	40°04'22.874"N	104°40'43.380"W	0.94	
2424.00	13.860	41.440	2373.37	-340.89	337.55	280.98	40°04'23.047"N	104°40'43.180"W	0.87	
2519.00	15.290	40.750	2465.31	-359.09	355.57	296.68	40°04'23.225"N	104°40'42.978"W	1.52	
2614.00	14.440	40.740	2557.13	-377.75	374.03	312.59	40°04'23.407"N	104°40'42.773"W	0.89	
2708.00	15.470	36.150	2647.95	-396.93	393.04	327.64	40°04'23.595"N	104°40'42.579"W	1.67	
2803.00	15.280	38.680	2739.55	-417.11	413.04	342.93	40°04'23.793"N	104°40'42.383"W	0.73	
2898.00	14.780	39.080	2831.30	-436.47	432.22	358.40	40°04'23.982"N	104°40'42.184"W	0.54	
2992.00	16.530	40.010	2921.81	-456.22	451.77	374.55	40°04'24.175"N	104°40'41.976"W	1.88	
3087.00	15.730	39.200	3013.07	-476.75	472.10	391.38	40°04'24.376"N	104°40'41.759"W	0.87	
3182.00	14.490	37.400	3104.79	-496.35	491.52	406.74	40°04'24.568"N	104°40'41.562"W	1.40	
3277.00	13.310	37.380	3197.00	-514.65	509.66	420.60	40°04'24.747"N	104°40'41.384"W	1.24	
3372.00	12.020	37.230	3289.69	-531.36	526.22	433.22	40°04'24.911"N	104°40'41.221"W	1.36	
3466.00	10.690	33.840	3381.85	-546.53	541.26	444.00	40°04'25.060"N	104°40'41.083"W	1.58	
3561.00	9.570	40.360	3475.37	-559.98	554.60	454.02	40°04'25.192"N	104°40'40.954"W	1.69	
3655.00	7.710	39.420	3568.30	-570.92	565.42	463.09	40°04'25.299"N	104°40'40.837"W	1.98	
3750.00	6.440	38.570	3662.57	-580.09	574.51	470.46	40°04'25.388"N	104°40'40.742"W	1.34	
3845.00	5.610	36.030	3757.05	-588.09	582.43	476.51	40°04'25.467"N	104°40'40.664"W	0.92	
3939.00	3.400	43.030	3850.75	-593.89	588.18	481.11	40°04'25.524"N	104°40'40.605"W	2.42	
4034.00	2.870	36.680	3945.61	-597.90	592.15	484.46	40°04'25.563"N	104°40'40.562"W	0.67	

REFERENCE WELLPATH IDENTIFICATION				
Operator	KERR-MCGEE OIL & GAS ONSHORE LP (WA)		Slot	SLOT#23 ENGLISH FARMS 13N-9HZ (432'FNL & 345'FEL, SEC.08)
Area	COLORADO		Well	ENGLISH FARMS 13N-9HZ
Field	WELD COUNTY (UTM/TRUE NORTH)		Wellbore	ENGLISH FARMS 13N-9HZ AWB <11877>
Facility	SEC.08-T1N-R65W			

WELLPATH DATA (112 stations) † = interpolated/extrapolated station										
MD [ft]	Inclination [°]	Azimuth [°]	TVD [ft]	Vert Sect [ft]	North [ft]	East [ft]	Latitude	Longitude	DLS [°/100ft]	Comments
4129.00	1.090	48.970	4040.55	-600.43	594.65	486.56	40°04'25.587"N	104°40'40.535"W	1.92	
4223.00	0.620	314.910	4134.54	-601.38	595.60	486.87	40°04'25.597"N	104°40'40.531"W	1.37	
4413.00	0.620	335.250	4324.53	-603.02	597.26	485.71	40°04'25.613"N	104°40'40.546"W	0.12	
4696.00	0.740	317.350	4607.51	-605.73	599.99	483.84	40°04'25.640"N	104°40'40.570"W	0.09	
4980.00	1.160	352.620	4891.48	-609.91	604.19	482.22	40°04'25.682"N	104°40'40.591"W	0.25	
5359.00	2.150	36.440	5270.33	-619.48	613.72	485.95	40°04'25.776"N	104°40'40.543"W	0.41	
5737.00	1.610	32.720	5648.12	-629.74	623.89	493.04	40°04'25.876"N	104°40'40.452"W	0.15	
6116.00	1.140	353.170	6027.02	-637.99	632.11	495.47	40°04'25.958"N	104°40'40.421"W	0.27	
6431.00	0.740	347.930	6341.98	-643.08	637.21	494.67	40°04'26.008"N	104°40'40.431"W	0.13	
6495.00	0.690	251.850	6405.97	-643.36	637.50	494.22	40°04'26.011"N	104°40'40.437"W	1.66	
6589.00	11.260	183.670	6499.35	-633.98	628.13	493.09	40°04'25.918"N	104°40'40.451"W	11.73	
6684.00	19.260	190.250	6590.94	-609.23	603.42	489.70	40°04'25.674"N	104°40'40.495"W	8.60	
6779.00	27.890	191.770	6677.92	-571.90	566.18	482.36	40°04'25.306"N	104°40'40.589"W	9.11	
6874.00	36.370	187.570	6758.31	-522.04	516.40	474.11	40°04'24.814"N	104°40'40.695"W	9.23	
6969.00	46.730	179.270	6829.36	-459.28	453.68	470.82	40°04'24.194"N	104°40'40.738"W	12.33	
7063.00	55.040	177.880	6888.62	-386.46	380.84	472.69	40°04'23.474"N	104°40'40.714"W	8.91	
7157.00†	60.324	179.137	6938.86	-307.11	301.46	474.73	40°04'22.690"N	104°40'40.687"W	5.73	SSPG
7158.00	60.380	179.150	6939.35	-306.24	300.59	474.74	40°04'22.681"N	104°40'40.687"W	5.73	
7223.00†	63.615	178.304	6969.86	-248.89	243.22	476.02	40°04'22.115"N	104°40'40.671"W	5.11	NBRR
7253.00	65.110	177.930	6982.84	-221.87	216.19	476.91	40°04'21.847"N	104°40'40.659"W	5.11	
7348.00	70.330	178.490	7018.85	-134.08	128.35	479.65	40°04'20.979"N	104°40'40.624"W	5.52	
7443.00	77.790	178.890	7044.92	-42.85	37.10	481.73	40°04'20.078"N	104°40'40.597"W	7.86	
7525.00†	83.600	178.881	7058.17	37.99	-43.78	483.30	40°04'19.278"N	104°40'40.577"W	7.09	ENTERED LANDBOX
7537.00	84.450	178.880	7059.42	49.92	-55.71	483.54	40°04'19.160"N	104°40'40.574"W	7.09	
7607.00	88.370	179.080	7063.81	119.74	-125.55	484.78	40°04'18.470"N	104°40'40.558"W	5.61	LANDING POINT
7727.00	88.980	177.460	7066.58	239.60	-245.45	488.40	40°04'17.285"N	104°40'40.512"W	1.44	
7822.00	89.200	179.500	7068.09	334.51	-340.40	490.92	40°04'16.347"N	104°40'40.479"W	2.16	
7917.00	88.240	179.510	7070.21	429.47	-435.38	491.74	40°04'15.408"N	104°40'40.469"W	1.01	
8012.00	88.090	181.480	7073.25	524.41	-530.32	490.92	40°04'14.470"N	104°40'40.479"W	2.08	
8106.00	87.810	181.030	7076.62	618.35	-624.24	488.86	40°04'13.542"N	104°40'40.506"W	0.56	
8201.00	88.240	181.820	7079.89	713.28	-719.15	486.50	40°04'12.604"N	104°40'40.536"W	0.95	
8296.00	88.490	181.440	7082.60	808.23	-814.07	483.80	40°04'11.666"N	104°40'40.571"W	0.48	
8390.00	89.230	181.710	7084.47	902.20	-908.02	481.22	40°04'10.738"N	104°40'40.604"W	0.84	
8485.00	89.480	181.680	7085.54	997.18	-1002.97	478.41	40°04'09.799"N	104°40'40.640"W	0.27	
8580.00	89.880	182.220	7086.07	1092.15	-1097.91	475.18	40°04'08.861"N	104°40'40.682"W	0.71	
8674.00	90.310	181.340	7085.92	1186.13	-1191.86	472.26	40°04'07.933"N	104°40'40.720"W	1.04	
8769.00	88.490	180.610	7086.91	1281.12	-1286.84	470.64	40°04'06.994"N	104°40'40.740"W	2.06	
8863.00	88.580	180.120	7089.31	1375.09	-1380.81	470.04	40°04'06.066"N	104°40'40.748"W	0.53	
8958.00	88.400	180.060	7091.82	1470.05	-1475.78	469.89	40°04'05.127"N	104°40'40.750"W	0.20	
9052.00	88.120	180.630	7094.67	1564.01	-1569.73	469.33	40°04'04.199"N	104°40'40.757"W	0.68	
9147.00	87.780	180.790	7098.07	1658.95	-1664.66	468.15	40°04'03.260"N	104°40'40.772"W	0.40	
9242.00	89.200	180.770	7100.57	1753.91	-1759.62	466.86	40°04'02.322"N	104°40'40.789"W	1.49	
9336.00	88.860	179.760	7102.16	1847.89	-1853.60	466.42	40°04'01.393"N	104°40'40.795"W	1.13	
9431.00	90.340	179.260	7102.83	1942.87	-1948.59	467.23	40°04'00.455"N	104°40'40.784"W	1.64	
9526.00	91.480	181.320	7101.32	2037.85	-2043.57	466.75	40°03'59.516"N	104°40'40.791"W	2.48	

REFERENCE WELLPATH IDENTIFICATION			
Operator	KERR-MCGEE OIL & GAS ONSHORE LP (WA)	Slot	SLOT#23 ENGLISH FARMS 13N-9HZ (432'FNL & 345'FEL, SEC.08)
Area	COLORADO	Well	ENGLISH FARMS 13N-9HZ
Field	WELD COUNTY (UTM/TRUE NORTH)	Wellbore	ENGLISH FARMS 13N-9HZ AWB <11877>
Facility	SEC.08-T1N-R65W		

WELLPATH DATA (112 stations)										
MD [ft]	Inclination [°]	Azimuth [°]	TVD [ft]	Vert Sect [ft]	North [ft]	East [ft]	Latitude	Longitude	DLS [°/100ft]	Comments
9621.00	91.480	180.740	7098.86	2132.81	-2138.53	465.05	40°03'58.578"N	104°40'40.813"W	0.61	
9715.00	89.260	180.460	7098.26	2226.80	-2232.51	464.06	40°03'57.649"N	104°40'40.825"W	2.38	
9904.00	89.880	180.020	7099.68	2415.79	-2421.50	463.27	40°03'55.781"N	104°40'40.835"W	0.40	
10094.00	90.710	179.710	7098.70	2605.77	-2611.50	463.72	40°03'53.904"N	104°40'40.830"W	0.47	
10189.00	90.710	179.700	7097.52	2700.75	-2706.49	464.21	40°03'52.965"N	104°40'40.823"W	0.01	
10378.00	87.010	180.450	7101.28	2889.66	-2895.42	463.96	40°03'51.098"N	104°40'40.827"W	2.00	
10473.00	85.460	180.160	7107.52	2984.45	-2990.21	463.46	40°03'50.161"N	104°40'40.833"W	1.66	
10568.00	87.780	180.380	7113.12	3079.28	-3085.04	463.01	40°03'49.224"N	104°40'40.839"W	2.45	
10662.00	91.660	182.530	7113.58	3173.25	-3178.98	460.62	40°03'48.296"N	104°40'40.870"W	4.72	
10757.00	91.350	182.760	7111.08	3268.16	-3273.85	456.24	40°03'47.358"N	104°40'40.926"W	0.41	
10851.00	90.580	181.280	7109.50	3362.12	-3367.77	452.93	40°03'46.430"N	104°40'40.969"W	1.77	
10946.00	91.810	181.000	7107.52	3457.09	-3462.73	451.04	40°03'45.492"N	104°40'40.993"W	1.33	
11041.00	91.380	180.740	7104.87	3552.05	-3557.68	449.60	40°03'44.553"N	104°40'41.012"W	0.53	
11136.00	95.830	180.340	7098.90	3646.84	-3652.47	448.70	40°03'43.617"N	104°40'41.023"W	4.70	
11231.00	95.140	181.150	7089.82	3741.40	-3747.02	447.47	40°03'42.682"N	104°40'41.039"W	1.12	
11326.00	93.240	181.520	7082.88	3836.14	-3841.74	445.26	40°03'41.746"N	104°40'41.067"W	2.04	
11421.00	93.920	180.990	7076.95	3930.95	-3936.53	443.19	40°03'40.809"N	104°40'41.094"W	0.91	
11516.00	92.550	182.100	7071.59	4025.78	-4031.34	440.63	40°03'39.872"N	104°40'41.127"W	1.85	
11611.00	93.350	181.760	7066.70	4120.63	-4126.16	437.43	40°03'38.935"N	104°40'41.168"W	0.91	
11706.00	90.030	183.200	7063.90	4215.53	-4221.01	433.33	40°03'37.998"N	104°40'41.221"W	3.81	
11828.00	90.960	183.060	7062.84	4337.41	-4342.82	426.66	40°03'36.794"N	104°40'41.307"W	0.77	LAST BHI MWD+IFR SURVEYS
11877.00	90.960	183.060	7062.02	4386.36	-4391.75	424.05	40°03'36.311"N	104°40'41.340"W	0.00	PROJECTION TO BIT

HOLE & CASING SECTIONS - Ref Wellbore: ENGLISH FARMS 13N-9HZ AWB <11877> Ref Wellpath: ENGLISH FARMS 13N-9HZ AWP									
String/Diameter	Start MD [ft]	End MD [ft]	Interval [ft]	Start TVD [ft]	End TVD [ft]	Start N/S [ft]	Start E/W [ft]	End N/S [ft]	End E/W [ft]
13.5in Open Hole	16.00	1859.00	1843.00	16.00	1827.17	0.00	0.00	226.59	188.76
9.625in Casing Surface	16.00	1849.00	1833.00	16.00	1817.54	0.00	0.00	224.48	187.09
7.875in Open Hole	1859.00	11877.00	10018.00	1827.17	7062.02	226.59	188.76	-4391.75	424.05



Actual Wellpath Report

ENGLISH FARMS 13N-9HZ AWP
Page 5 of 6



REFERENCE WELLPATH IDENTIFICATION			
Operator	KERR-MCGEE OIL & GAS ONSHORE LP (WA)	Slot	SLOT#23 ENGLISH FARMS 13N-9HZ (432'FNL & 345'FEL, SEC.08)
Area	COLORADO	Well	ENGLISH FARMS 13N-9HZ
Field	WELD COUNTY (UTM/TRUE NORTH)	Wellbore	ENGLISH FARMS 13N-9HZ AWB <11877>
Facility	SEC.08-T1N-R65W		

TARGETS								
Name	TVD [ft]	North [ft]	East [ft]	Grid East [US ft]	Grid North [US ft]	Latitude	Longitude	Shape
ENGLISH FARMS 13N-9HZ BHL ON PLAT REV-1 (464'FSL & 105'FWL, SEC.09)	7065.00	-4417.00	435.55	1730483.66	14548751.03	40°03'36.061"N	104°40'41.192"W	point
ENGLISH FARMS 13N-9HZ LANDBOX	7065.00	0.00	0.00	1730032.39	14553164.71	40°04'19.711"N	104°40'46.794"W	polygon
ENGLISH FARMS 13N-9HZ BHL ON PLAT REV-2 (464'FSL & 105'FWL, SEC.09)	7068.00	-4417.00	435.55	1730483.66	14548751.04	40°03'36.061"N	104°40'41.192"W	point
SEC.05-T1N-R65W SECTION LINES	7098.00	785.13	-2007.14	1728023.23	14553942.30	40°04'27.469"N	104°41'12.613"W	polygon
SEC.08-T1N-R65W SECTION LINES	7098.00	60.14	-4062.28	1725971.51	14553210.20	40°04'20.302"N	104°41'39.048"W	polygon
SEC.09-T1N-R65W SECTION LINES	7098.00	19.33	-23.24	1730009.08	14553183.94	40°04'19.902"N	104°40'47.093"W	polygon

WELLPATH COMPOSITION - Ref Wellbore: ENGLISH FARMS 13N-9HZ AWB <11877>				Ref Wellpath: ENGLISH FARMS 13N-9HZ AWP	
Start MD [ft]	End MD [ft]	Positional Uncertainty Model	Log Name/Comment	Wellbore	
16.00	1793.00	Custom_APC_ISCWSA REV 2 MWD	SDI MWD+IFR SURVEYS 13.5" <98-1793>	ENGLISH FARMS 13N-9HZ AWB <11877>	
1793.00	11828.00	Custom APC_ISCWSA REV 2 MWD+IFR1+SC (approximation)	BHI MWD+IFR SURVEYS 7.875" <1887-11828>	ENGLISH FARMS 13N-9HZ AWB <11877>	
11828.00	11877.00	Blind Drilling (std)	Projection to bit	ENGLISH FARMS 13N-9HZ AWB <11877>	



Actual Wellpath Report

ENGLISH FARMS 13N-9HZ AWP

Page 6 of 6



REFERENCE WELLPATH IDENTIFICATION

Operator	KERR-MCGEE OIL & GAS ONSHORE LP (WA)	Slot	SLOT#23 ENGLISH FARMS 13N-9HZ (432'FNL & 345'FEL, SEC.08)
Area	COLORADO	Well	ENGLISH FARMS 13N-9HZ
Field	WELD COUNTY (UTM/TRUE NORTH)	Wellbore	ENGLISH FARMS 13N-9HZ AWB <11877>
Facility	SEC.08-T1N-R65W		

WELLPATH COMMENTS

MD [ft]	Inclination [°]	Azimuth [°]	TVD [ft]	Comment
98.00	0.410	197.960	98.00	BEGIN MWD SURVEYS
1793.00	15.710	39.120	1763.62	TIE-ONTO MWD SURVEYS
1887.00	15.550	38.020	1854.14	BEGIN BHI MWD+IFR SURVEYS
7157.00	60.324	179.137	6938.86	SSPG
7223.00	63.615	178.304	6969.86	NBRR
7525.00	83.600	178.881	7058.17	ENTERED LANDBOX
7607.00	88.370	179.080	7063.81	LANDING POINT
11828.00	90.960	183.060	7062.84	LAST BHI MWD+IFR SURVEYS
11877.00	90.960	183.060	7062.02	PROJECTION TO BIT