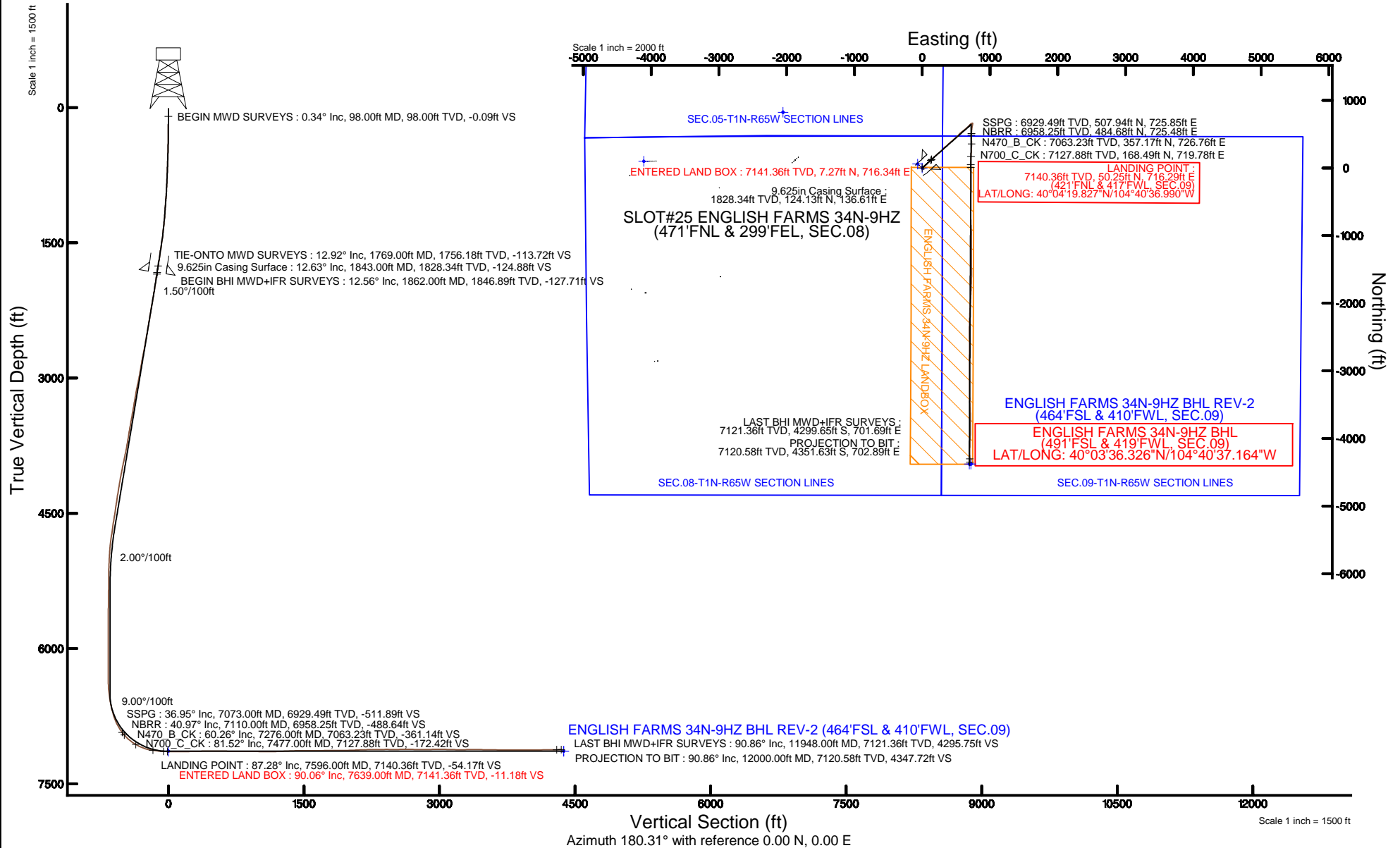


KERR-MCGEE OIL & GAS ONSHORE LP (WA)

Location: COLORADO Slot: SLOT#25 ENGLISH FARMS 34N-9HZ (471'FNL & 299'FEL, SEC.08)
 Field: WELD COUNTY (UTM/TRUE NORTH) Well: ENGLISH FARMS 34N-9HZ
 Facility: SEC.08-T1N-R65W Wellbore: ENGLISH FARMS 34N-9HZ PWB

Plot reference wellpath is ENGLISH FARMS 34N-9HZ (REV-B.0) PWP

True vertical depths are referenced to XTREME 24 (16'KB) (RKB)	Grid System: NAD83 / UTM Zone 13 North, US feet
Measured depths are referenced to XTREME 24 (16'KB) (RKB)	North Reference: True north
XTREME 24 (16'KB) (RKB) to Mean Sea Level: 4948 feet	Scale: True distance
Mean Sea Level to Mud line (At Slot: SLOT#25 ENGLISH FARMS 34N-9HZ (471'FNL & 299'FEL, SEC.08)): 0 feet	Depths are in feet
Coordinates are in feet referenced to Slot	Created by: amarcar on 03/Aug/2015





Actual Wellpath Report

ENGLISH FARMS 34N-9HZ AWP
Page 1 of 6



REFERENCE WELLPATH IDENTIFICATION			
Operator	KERR-MCGEE OIL & GAS ONSHORE LP (WA)	Slot	SLOT#25 ENGLISH FARMS 34N-9HZ (471'FNL & 299'FEL, SEC.08)
Area	COLORADO	Well	ENGLISH FARMS 34N-9HZ
Field	WELD COUNTY (UTM/TRUE NORTH)	Wellbore	ENGLISH FARMS 34N-9HZ AWB <12000>
Facility	SEC.08-T1N-R65W		

REPORT SETUP INFORMATION			
Projection System	NAD83 / UTM Zone 13 North, US feet	Software System	WellArchitect® 4.0.0
North Reference	True	User	Amarcar
Scale	0.999609	Report Generated	03/Aug/2015 at 15:40
Convergence at slot	0.21° East	Database/Source file	KERR MCGEE UTM/ENGLISH_FARMS_34N-9HZ_AWB_12000_.xml

WELLPATH LOCATION						
	Local coordinates		Grid coordinates		Geographic coordinates	
	North[ft]	East[ft]	Easting[US ft]	Northing[US ft]	Latitude	Longitude
Slot Location	286.38	357.92	1730078.38	14553126.33	40°04'19.330"N	104°40'46.204"W
Facility Reference Pt			1729721.63	14552838.79	40°04'16.500"N	104°40'50.808"W
Field Reference Pt			1698235.31	14552047.82	40°04'09.600"N	104°47'36.000"W

WELLPATH DATUM			
Calculation method	Minimum curvature	XTREME 24 (16'KB) (RKB) to Facility Vertical Datum	4948.00ft
Horizontal Reference Pt	Slot	XTREME 24 (16'KB) (RKB) to Mean Sea Level	4948.00ft
Vertical Reference Pt	XTREME 24 (16'KB) (RKB)	XTREME 24 (16'KB) (RKB) to Mud Line at Slot (SLOT#25 ENGLISH FARMS 34N-9HZ (471'FNL & 299'FEL, SEC.08))	4948.00ft
MD Reference Pt	XTREME 24 (16'KB) (RKB)	Section Origin	N 0.00, E 0.00 ft
Field Vertical Reference	Mean Sea Level	Section Azimuth	180.31°

REFERENCE WELLPATH IDENTIFICATION			
Operator	KERR-MCGEE OIL & GAS ONSHORE LP (WA)	Slot	SLOT#25 ENGLISH FARMS 34N-9HZ (471'FNL & 299'FEL, SEC.08)
Area	COLORADO	Well	ENGLISH FARMS 34N-9HZ
Field	WELD COUNTY (UTM/TRUE NORTH)	Wellbore	ENGLISH FARMS 34N-9HZ AWB <12000>
Facility	SEC.08-T1N-R65W		

WELLPATH DATA (124 stations) † = interpolated/extrapolated station										
MD [ft]	Inclination [°]	Azimuth [°]	TVD [ft]	Vert Sect [ft]	North [ft]	East [ft]	Latitude	Longitude	DLS [°/100ft]	Comments
0.00†	0.000	69.050	0.00	0.00	0.00	0.00	40°04'19.330"N	104°40'46.204"W	0.00	
16.00	0.000	69.050	16.00	0.00	0.00	0.00	40°04'19.330"N	104°40'46.204"W	0.00	
98.00	0.340	69.050	98.00	-0.09	0.09	0.23	40°04'19.331"N	104°40'46.201"W	0.41	BEGIN MWD SURVEYS
189.00	0.770	67.840	189.00	-0.42	0.41	1.05	40°04'19.334"N	104°40'46.191"W	0.47	
281.00	1.090	69.110	280.98	-0.97	0.96	2.44	40°04'19.339"N	104°40'46.173"W	0.35	
376.00	1.540	47.430	375.96	-2.17	2.15	4.22	40°04'19.351"N	104°40'46.150"W	0.70	
471.00	2.170	33.890	470.91	-4.54	4.50	6.16	40°04'19.374"N	104°40'46.125"W	0.80	
566.00	2.150	35.720	565.84	-7.49	7.44	8.21	40°04'19.404"N	104°40'46.098"W	0.08	
661.00	2.400	36.910	660.77	-10.54	10.48	10.44	40°04'19.434"N	104°40'46.070"W	0.27	
756.00	3.480	46.340	755.64	-14.13	14.06	13.72	40°04'19.469"N	104°40'46.027"W	1.24	
851.00	4.160	52.310	850.43	-18.26	18.16	18.53	40°04'19.509"N	104°40'45.966"W	0.83	
1009.00	6.630	50.500	1007.72	-27.63	27.46	30.11	40°04'19.601"N	104°40'45.817"W	1.57	
1104.00	6.380	50.120	1102.11	-34.55	34.34	38.39	40°04'19.669"N	104°40'45.710"W	0.27	
1199.00	6.560	50.420	1196.50	-41.43	41.18	46.62	40°04'19.737"N	104°40'45.604"W	0.19	
1294.00	8.260	47.050	1290.70	-49.59	49.29	55.80	40°04'19.817"N	104°40'45.486"W	1.85	
1389.00	9.660	48.110	1384.54	-59.62	59.26	66.73	40°04'19.916"N	104°40'45.346"W	1.48	
1484.00	11.200	45.140	1477.97	-71.52	71.09	79.21	40°04'20.033"N	104°40'45.185"W	1.72	
1579.00	12.600	46.180	1570.93	-85.28	84.77	93.22	40°04'20.168"N	104°40'45.005"W	1.49	
1674.00	12.920	49.140	1663.58	-99.49	98.90	108.73	40°04'20.307"N	104°40'44.805"W	0.77	
1769.00	12.920	47.350	1756.18	-113.72	113.04	124.58	40°04'20.447"N	104°40'44.602"W	0.42	TIE-ONTO MWD SURVEYS
1862.00	12.560	47.260	1846.89	-127.71	126.95	139.65	40°04'20.585"N	104°40'44.408"W	0.39	BEGIN BHI MWD+IFR SURVEYS
1957.00	12.150	45.010	1939.69	-141.87	141.02	154.31	40°04'20.724"N	104°40'44.219"W	0.67	
2052.00	13.410	45.370	2032.33	-156.75	155.83	169.22	40°04'20.870"N	104°40'44.027"W	1.33	
2147.00	14.300	48.470	2124.57	-172.36	171.35	185.84	40°04'21.023"N	104°40'43.813"W	1.22	
2241.00	15.210	50.590	2215.47	-187.99	186.88	204.06	40°04'21.177"N	104°40'43.579"W	1.13	
2336.00	14.570	50.590	2307.28	-203.59	202.37	222.92	40°04'21.330"N	104°40'43.337"W	0.67	
2431.00	14.840	50.400	2399.17	-219.03	217.72	241.53	40°04'21.481"N	104°40'43.097"W	0.29	
2526.00	14.830	50.800	2491.00	-234.57	233.15	260.32	40°04'21.634"N	104°40'42.855"W	0.11	
2621.00	14.770	50.210	2582.85	-250.11	248.59	279.05	40°04'21.787"N	104°40'42.615"W	0.17	
2715.00	14.920	43.460	2673.72	-266.66	265.04	296.58	40°04'21.949"N	104°40'42.389"W	1.85	
2810.00	14.220	39.670	2765.66	-284.60	282.90	312.44	40°04'22.126"N	104°40'42.185"W	1.24	
2905.00	13.240	47.500	2857.96	-301.02	299.23	327.91	40°04'22.287"N	104°40'41.986"W	2.21	
2999.00	15.540	48.470	2949.00	-316.74	314.86	345.28	40°04'22.441"N	104°40'41.763"W	2.46	
3094.00	16.400	47.030	3040.33	-334.42	332.43	364.62	40°04'22.615"N	104°40'41.514"W	1.00	
3189.00	15.290	45.250	3131.72	-352.48	350.40	383.33	40°04'22.793"N	104°40'41.273"W	1.28	
3284.00	15.350	51.110	3223.35	-369.30	367.11	402.01	40°04'22.958"N	104°40'41.033"W	1.63	
3379.00	14.110	50.470	3315.23	-384.67	382.37	420.73	40°04'23.109"N	104°40'40.792"W	1.32	
3473.00	15.060	47.060	3406.20	-400.38	397.99	438.51	40°04'23.263"N	104°40'40.563"W	1.36	
3568.00	15.360	49.670	3497.87	-417.03	414.54	457.13	40°04'23.427"N	104°40'40.324"W	0.79	
3662.00	13.070	44.940	3588.99	-432.70	430.12	474.14	40°04'23.580"N	104°40'40.105"W	2.73	
3757.00	14.180	50.560	3681.32	-447.79	445.12	490.71	40°04'23.729"N	104°40'39.892"W	1.82	
3852.00	15.900	49.680	3773.06	-463.71	460.93	509.62	40°04'23.885"N	104°40'39.649"W	1.83	
3946.00	15.960	41.830	3863.46	-481.77	478.89	528.06	40°04'24.062"N	104°40'39.411"W	2.29	
4041.00	15.550	42.690	3954.90	-500.96	497.99	545.40	40°04'24.251"N	104°40'39.188"W	0.50	
4136.00	15.370	45.950	4046.46	-519.17	516.10	563.09	40°04'24.430"N	104°40'38.961"W	0.93	

REFERENCE WELLPATH IDENTIFICATION			
Operator	KERR-MCGEE OIL & GAS ONSHORE LP (WA)	Slot	SLOT#25 ENGLISH FARMS 34N-9HZ (471'FNL & 299'FEL, SEC.08)
Area	COLORADO	Well	ENGLISH FARMS 34N-9HZ
Field	WELD COUNTY (UTM/TRUE NORTH)	Wellbore	ENGLISH FARMS 34N-9HZ AWB <12000>
Facility	SEC.08-T1N-R65W		

WELLPATH DATA (124 stations) † = interpolated/extrapolated station										
MD [ft]	Inclination [°]	Azimuth [°]	TVD [ft]	Vert Sect [ft]	North [ft]	East [ft]	Latitude	Longitude	DLS [°/100ft]	Comments
4230.00	15.810	53.340	4137.01	-535.58	532.41	582.31	40°04'24.591"N	104°40'38.713"W	2.16	
4325.00	15.150	51.950	4228.56	-551.07	547.79	602.47	40°04'24.743"N	104°40'38.454"W	0.80	
4420.00	13.690	50.300	4320.57	-566.00	562.62	620.90	40°04'24.890"N	104°40'38.217"W	1.60	
4514.00	12.920	52.890	4412.05	-579.54	576.07	637.84	40°04'25.023"N	104°40'37.999"W	1.04	
4608.00	13.690	49.050	4503.52	-593.26	589.70	654.62	40°04'25.157"N	104°40'37.783"W	1.25	
4703.00	12.390	46.510	4596.07	-607.73	604.08	670.51	40°04'25.300"N	104°40'37.579"W	1.50	
4798.00	11.540	45.200	4689.01	-621.52	617.79	684.64	40°04'25.435"N	104°40'37.397"W	0.94	
4892.00	11.350	44.650	4781.14	-634.80	631.00	697.81	40°04'25.566"N	104°40'37.228"W	0.23	
4987.00	8.440	47.910	4874.72	-646.19	642.32	709.56	40°04'25.677"N	104°40'37.077"W	3.12	
5082.00	6.540	63.300	4968.91	-653.35	649.43	719.57	40°04'25.748"N	104°40'36.948"W	2.89	
5176.00	3.540	50.060	5062.54	-657.66	653.70	726.58	40°04'25.790"N	104°40'36.858"W	3.40	
5271.00	0.680	44.710	5157.47	-659.95	655.98	729.22	40°04'25.812"N	104°40'36.824"W	3.01	
5650.00	1.090	44.440	5536.42	-664.15	660.15	733.33	40°04'25.854"N	104°40'36.771"W	0.11	
6028.00	1.010	109.090	5914.37	-665.66	661.63	739.00	40°04'25.868"N	104°40'36.698"W	0.30	
6312.00	0.650	81.500	6198.34	-665.10	661.05	742.95	40°04'25.863"N	104°40'36.647"W	0.19	
6502.00	0.480	194.080	6388.33	-664.49	660.44	743.83	40°04'25.856"N	104°40'36.636"W	0.50	
6596.00	6.110	179.540	6482.14	-659.10	655.05	743.77	40°04'25.803"N	104°40'36.636"W	6.01	
6691.00	9.700	192.010	6576.23	-646.20	642.16	742.15	40°04'25.676"N	104°40'36.657"W	4.17	
6786.00	14.090	191.060	6669.17	-627.00	622.97	738.26	40°04'25.486"N	104°40'36.707"W	4.63	
6881.00	18.670	187.260	6760.29	-600.53	596.53	734.12	40°04'25.225"N	104°40'36.761"W	4.95	
6976.00	27.640	187.270	6847.55	-563.48	559.51	729.40	40°04'24.859"N	104°40'36.821"W	9.44	
7070.00	36.630	181.500	6927.08	-513.69	509.73	725.90	40°04'24.367"N	104°40'36.866"W	10.10	
7073.00†	36.955	181.416	6929.49	-511.89	507.94	725.85	40°04'24.349"N	104°40'36.867"W	10.96	SSPG
7110.00†	40.966	180.477	6958.25	-488.64	484.68	725.48	40°04'24.120"N	104°40'36.872"W	10.96	NBRR
7165.00	46.940	179.330	6997.83	-450.48	446.52	725.56	40°04'23.743"N	104°40'36.871"W	10.96	
7260.00	58.740	179.100	7055.11	-374.92	370.96	726.61	40°04'22.996"N	104°40'36.857"W	12.42	
7276.00†	60.259	179.644	7063.23	-361.14	357.17	726.76	40°04'22.860"N	104°40'36.855"W	9.94	N470_B_CK
7355.00	67.790	182.120	7097.81	-290.18	286.22	725.62	40°04'22.158"N	104°40'36.870"W	9.94	
7450.00	80.550	183.360	7123.67	-199.06	195.12	721.22	40°04'21.258"N	104°40'36.927"W	13.49	
7477.00†	81.517	182.851	7127.88	-172.42	168.49	719.78	40°04'20.995"N	104°40'36.945"W	4.04	N700_C_CK
7544.00	83.920	181.600	7136.37	-106.00	102.08	717.20	40°04'20.339"N	104°40'36.978"W	4.04	
7596.00†	87.280	180.420	7140.36	-54.17	50.25	716.29	40°04'19.827"N	104°40'36.990"W	6.85	LANDING POINT
7639.00	90.060	179.450	7141.36	-11.18	7.27	716.34	40°04'19.402"N	104°40'36.990"W	6.85	ENTERED LAND BOX
7734.00	89.690	179.580	7141.57	83.81	-87.73	717.14	40°04'18.463"N	104°40'36.979"W	0.41	
7829.00	90.340	179.500	7141.54	178.80	-182.72	717.90	40°04'17.524"N	104°40'36.970"W	0.69	
7924.00	90.950	180.030	7140.47	273.79	-277.71	718.29	40°04'16.585"N	104°40'36.965"W	0.85	
8019.00	91.350	180.390	7138.57	368.77	-372.69	717.95	40°04'15.647"N	104°40'36.969"W	0.57	
8113.00	90.370	180.240	7137.16	462.76	-466.68	717.43	40°04'14.718"N	104°40'36.976"W	1.05	
8208.00	89.130	180.510	7137.57	557.75	-561.68	716.81	40°04'13.779"N	104°40'36.984"W	1.34	
8303.00	89.560	180.750	7138.66	652.74	-656.66	715.76	40°04'12.841"N	104°40'36.997"W	0.52	
8397.00	89.600	179.050	7139.35	746.74	-750.66	715.93	40°04'11.912"N	104°40'36.995"W	1.81	
8492.00	89.440	176.780	7140.14	841.64	-845.59	719.38	40°04'10.974"N	104°40'36.951"W	2.40	
8587.00	90.000	177.690	7140.61	936.50	-940.47	723.97	40°04'10.036"N	104°40'36.892"W	1.12	
8681.00	88.700	180.360	7141.67	1030.46	-1034.44	725.57	40°04'09.107"N	104°40'36.871"W	3.16	
8776.00	90.610	180.250	7142.24	1125.46	-1129.43	725.06	40°04'08.169"N	104°40'36.878"W	2.01	

REFERENCE WELLPATH IDENTIFICATION			
Operator	KERR-MCGEE OIL & GAS ONSHORE LP (WA)	Slot	SLOT#25 ENGLISH FARMS 34N-9HZ (471'FNL & 299'FEL, SEC.08)
Area	COLORADO	Well	ENGLISH FARMS 34N-9HZ
Field	WELD COUNTY (UTM/TRUE NORTH)	Wellbore	ENGLISH FARMS 34N-9HZ AWB <12000>
Facility	SEC.08-T1N-R65W		

WELLPATH DATA (124 stations)										
MD [ft]	Inclination [°]	Azimuth [°]	TVD [ft]	Vert Sect [ft]	North [ft]	East [ft]	Latitude	Longitude	DLS [°/100ft]	Comments
8870.00	91.660	179.570	7140.38	1219.43	-1223.41	725.21	40°04'07.240"N	104°40'36.876"W	1.33	
8965.00	92.680	179.650	7136.79	1314.36	-1318.34	725.85	40°04'06.302"N	104°40'36.868"W	1.08	
9059.00	91.880	180.240	7133.05	1408.28	-1412.27	725.94	40°04'05.374"N	104°40'36.867"W	1.06	
9154.00	89.510	178.450	7131.89	1503.25	-1507.24	727.03	40°04'04.435"N	104°40'36.853"W	3.13	
9249.00	89.750	181.680	7132.51	1598.23	-1602.23	726.92	40°04'03.496"N	104°40'36.854"W	3.41	
9343.00	91.450	181.900	7131.52	1692.19	-1696.17	723.99	40°04'02.568"N	104°40'36.892"W	1.82	
9438.00	89.690	182.180	7130.58	1787.14	-1791.11	720.60	40°04'01.630"N	104°40'36.935"W	1.88	
9533.00	90.520	183.190	7130.40	1882.06	-1886.00	716.15	40°04'00.692"N	104°40'36.993"W	1.38	
9628.00	91.170	183.040	7129.00	1976.93	-1980.85	710.99	40°03'59.755"N	104°40'37.059"W	0.70	
9722.00	92.620	182.740	7125.89	2070.78	-2074.67	706.26	40°03'58.828"N	104°40'37.120"W	1.58	
9817.00	92.120	182.950	7121.97	2165.61	-2169.48	701.54	40°03'57.891"N	104°40'37.181"W	0.57	
9911.00	89.940	181.410	7120.28	2259.54	-2263.38	697.97	40°03'56.963"N	104°40'37.227"W	2.84	
10006.00	91.390	181.340	7119.17	2354.51	-2358.35	695.69	40°03'56.024"N	104°40'37.256"W	1.53	
10101.00	89.130	179.410	7118.74	2449.50	-2453.33	695.07	40°03'55.086"N	104°40'37.264"W	3.13	
10196.00	90.740	179.110	7118.85	2544.48	-2548.32	696.30	40°03'54.147"N	104°40'37.248"W	1.72	
10291.00	90.150	180.040	7118.11	2639.47	-2643.32	697.00	40°03'53.208"N	104°40'37.239"W	1.16	
10385.00	88.920	180.660	7118.88	2733.46	-2737.31	696.43	40°03'52.279"N	104°40'37.247"W	1.47	
10480.00	89.970	179.580	7119.80	2828.46	-2832.30	696.23	40°03'51.341"N	104°40'37.249"W	1.59	
10575.00	91.660	179.890	7118.44	2923.44	-2927.29	696.67	40°03'50.402"N	104°40'37.244"W	1.81	
10669.00	89.410	179.750	7117.57	3017.42	-3021.28	696.96	40°03'49.473"N	104°40'37.240"W	2.40	
10764.00	88.270	179.310	7119.49	3112.39	-3116.25	697.74	40°03'48.534"N	104°40'37.230"W	1.29	
10858.00	89.260	179.690	7121.52	3206.36	-3210.23	698.56	40°03'47.606"N	104°40'37.219"W	1.13	
10953.00	91.320	179.980	7121.03	3301.35	-3305.22	698.83	40°03'46.667"N	104°40'37.216"W	2.19	
11048.00	89.850	178.790	7120.06	3396.33	-3400.20	699.85	40°03'45.728"N	104°40'37.203"W	1.99	
11143.00	88.120	176.440	7121.75	3491.20	-3495.10	703.81	40°03'44.791"N	104°40'37.152"W	3.07	
11238.00	89.840	177.610	7123.44	3586.02	-3589.95	708.74	40°03'43.853"N	104°40'37.089"W	2.19	
11333.00	89.510	179.170	7123.98	3680.96	-3684.91	711.40	40°03'42.915"N	104°40'37.054"W	1.68	
11428.00	88.920	179.650	7125.28	3775.94	-3779.89	712.38	40°03'41.976"N	104°40'37.042"W	0.80	
11523.00	90.860	180.600	7125.46	3870.94	-3874.89	712.18	40°03'41.037"N	104°40'37.045"W	2.27	
11618.00	90.400	183.660	7124.42	3965.87	-3969.80	708.65	40°03'40.099"N	104°40'37.090"W	3.26	
11713.00	90.090	181.060	7124.01	4060.80	-4064.71	704.73	40°03'39.162"N	104°40'37.140"W	2.76	
11807.00	90.740	181.850	7123.33	4154.78	-4158.68	702.35	40°03'38.233"N	104°40'37.171"W	1.09	
11948.00	90.860	178.680	7121.36	4295.75	-4299.65	701.69	40°03'36.840"N	104°40'37.180"W	2.25	LAST BHI MWD+IFR SURVEYS
12000.00	90.860	178.680	7120.58	4347.72	-4351.63	702.89	40°03'36.326"N	104°40'37.164"W	0.00	PROJECTION TO BIT

HOLE & CASING SECTIONS - Ref Wellbore: ENGLISH FARMS 34N-9HZ AWB <12000> Ref Wellpath: ENGLISH FARMS 34N-9HZ AWP									
String/Diameter	Start MD [ft]	End MD [ft]	Interval [ft]	Start TVD [ft]	End TVD [ft]	Start N/S [ft]	Start E/W [ft]	End N/S [ft]	End E/W [ft]
13.5in Open Hole	16.00	1853.00	1837.00	16.00	1838.10	0.00	0.00	125.62	138.21
9.625in Casing Surface	16.00	1843.00	1827.00	16.00	1828.34	0.00	0.00	124.13	136.61
7.875in Open Hole	1853.00	12000.00	10147.00	1838.10	7120.58	125.62	138.21	-4351.63	702.89

REFERENCE WELLPATH IDENTIFICATION			
Operator	KERR-MCGEE OIL & GAS ONSHORE LP (WA)	Slot	SLOT#25 ENGLISH FARMS 34N-9HZ (471'FNL & 299'FEL, SEC.08)
Area	COLORADO	Well	ENGLISH FARMS 34N-9HZ
Field	WELD COUNTY (UTM/TRUE NORTH)	Wellbore	ENGLISH FARMS 34N-9HZ AWB <12000>
Facility	SEC.08-T1N-R65W		

TARGETS								
Name	TVD [ft]	North [ft]	East [ft]	Grid East [US ft]	Grid North [US ft]	Latitude	Longitude	Shape
SEC.05-T1N-R65W SECTION LINES	7098.00	823.69	-2053.00	1728023.23	14553942.30	40°04'27.469"N	104°41'12.613"W	polygon
SEC.08-T1N-R65W SECTION LINES	7098.00	98.70	-4108.15	1725971.51	14553210.20	40°04'20.302"N	104°41'39.048"W	polygon
SEC.09-T1N-R65W SECTION LINES	7098.00	57.88	-69.11	1730009.08	14553183.94	40°04'19.902"N	104°40'47.093"W	polygon
ENGLISH FARMS 34N-9HZ BHL ON PLAT REV-1 (464'FSL & 435'FWL, SEC.09)	7138.00	-4378.46	719.39	1730813.24	14548752.21	40°03'36.061"N	104°40'36.952"W	point
ENGLISH FARMS 34N-9HZ BHL REV-2 (464'FSL & 410'FWL, SEC.09)	7138.00	-4378.46	694.39	1730788.25	14548752.12	40°03'36.061"N	104°40'37.273"W	point
ENGLISH FARMS 34N-9HZ LANDBOX	7138.00	0.00	0.00	1730078.38	14553126.33	40°04'19.330"N	104°40'46.204"W	polygon

WELLPATH COMPOSITION - Ref Wellbore: ENGLISH FARMS 34N-9HZ AWB <12000>				Ref Wellpath: ENGLISH FARMS 34N-9HZ AWP	
Start MD [ft]	End MD [ft]	Positional Uncertainty Model	Log Name/Comment	Wellbore	
16.00	1769.00	Custom_APC_ISCWSA REV 2 MWD	SDI MWD SURVEYS 13.5" <98-1769>	ENGLISH FARMS 34N-9HZ AWB <12000>	
1769.00	11948.00	Custom APC_ISCWSA REV 2 MWD+IFR1+SC (approximation)	BHI MWD+IFR SURVEYS 7.875" <1862-11948>	ENGLISH FARMS 34N-9HZ AWB <12000>	
11948.00	12000.00	Blind Drilling (std)	Projection to bit	ENGLISH FARMS 34N-9HZ AWB <12000>	



Actual Wellpath Report

ENGLISH FARMS 34N-9HZ AWP
Page 6 of 6



REFERENCE WELLPATH IDENTIFICATION			
Operator	KERR-MCGEE OIL & GAS ONSHORE LP (WA)	Slot	SLOT#25 ENGLISH FARMS 34N-9HZ (471'FNL & 299'FEL, SEC.08)
Area	COLORADO	Well	ENGLISH FARMS 34N-9HZ
Field	WELD COUNTY (UTM/TRUE NORTH)	Wellbore	ENGLISH FARMS 34N-9HZ AWB <12000>
Facility	SEC.08-T1N-R65W		

WELLPATH COMMENTS				
MD [ft]	Inclination [°]	Azimuth [°]	TVD [ft]	Comment
98.00	0.340	69.050	98.00	BEGIN MWD SURVEYS
1769.00	12.920	47.350	1756.18	TIE-ONTO MWD SURVEYS
1862.00	12.560	47.260	1846.89	BEGIN BHI MWD+IFR SURVEYS
7073.00	36.955	181.416	6929.49	SSPG
7110.00	40.966	180.477	6958.25	NBRR
7276.00	60.259	179.644	7063.23	N470_B_CK
7477.00	81.517	182.851	7127.88	N700_C_CK
7596.00	87.280	180.420	7140.36	LANDING POINT
7639.00	90.060	179.450	7141.36	ENTERED LAND BOX
11948.00	90.860	178.680	7121.36	LAST BHI MWD+IFR SURVEYS
12000.00	90.860	178.680	7120.58	PROJECTION TO BIT