

EXTRACTION OIL & GAS

WELD COUNTY, COLORADO (NAD 83)

SE NW SEC. 8 T6N R65W 6th P.M.

JANSSEN 5

ORIGINAL WELLBORE

05 December, 2014

Plan: PROPOSAL #1

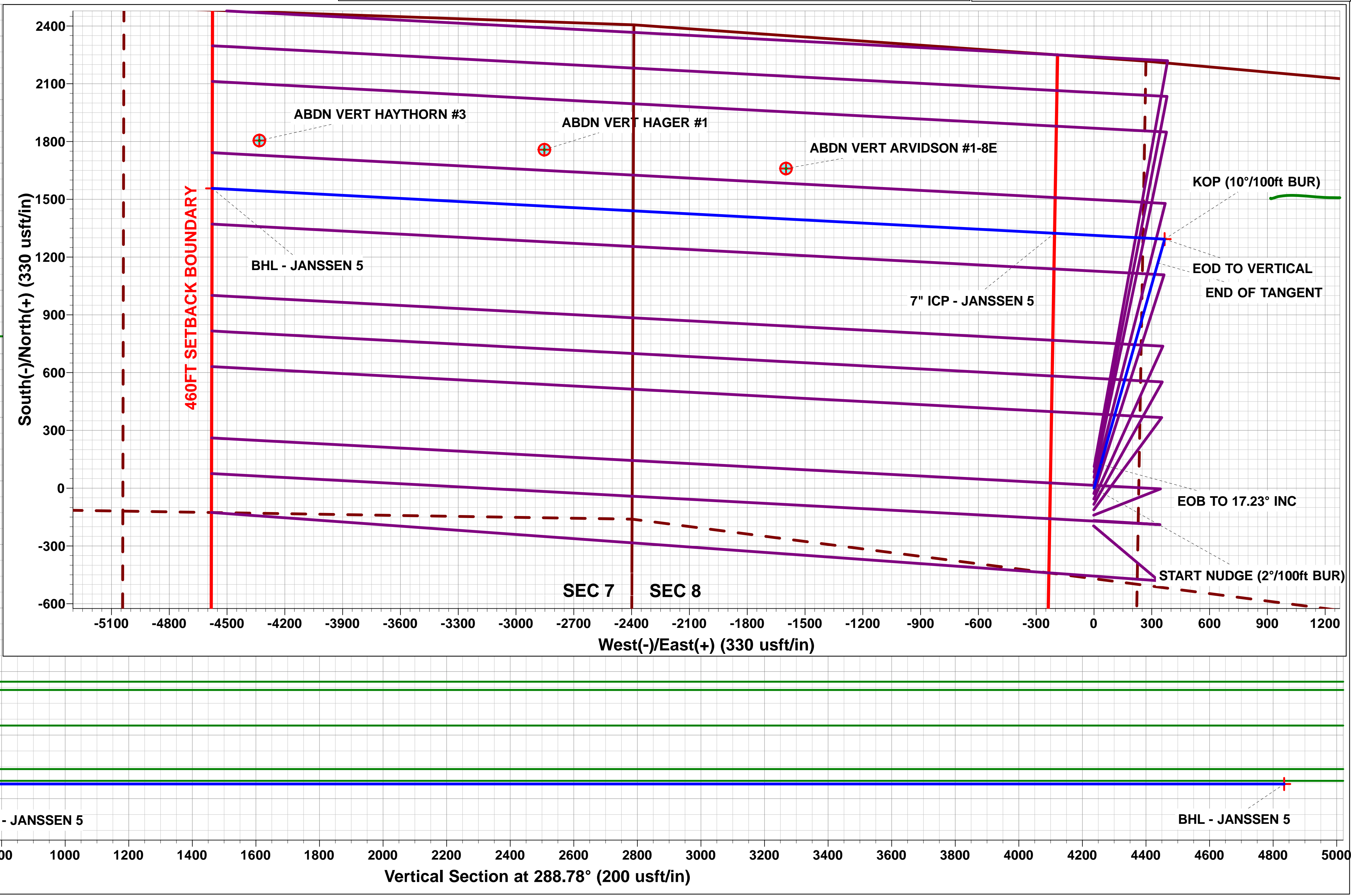
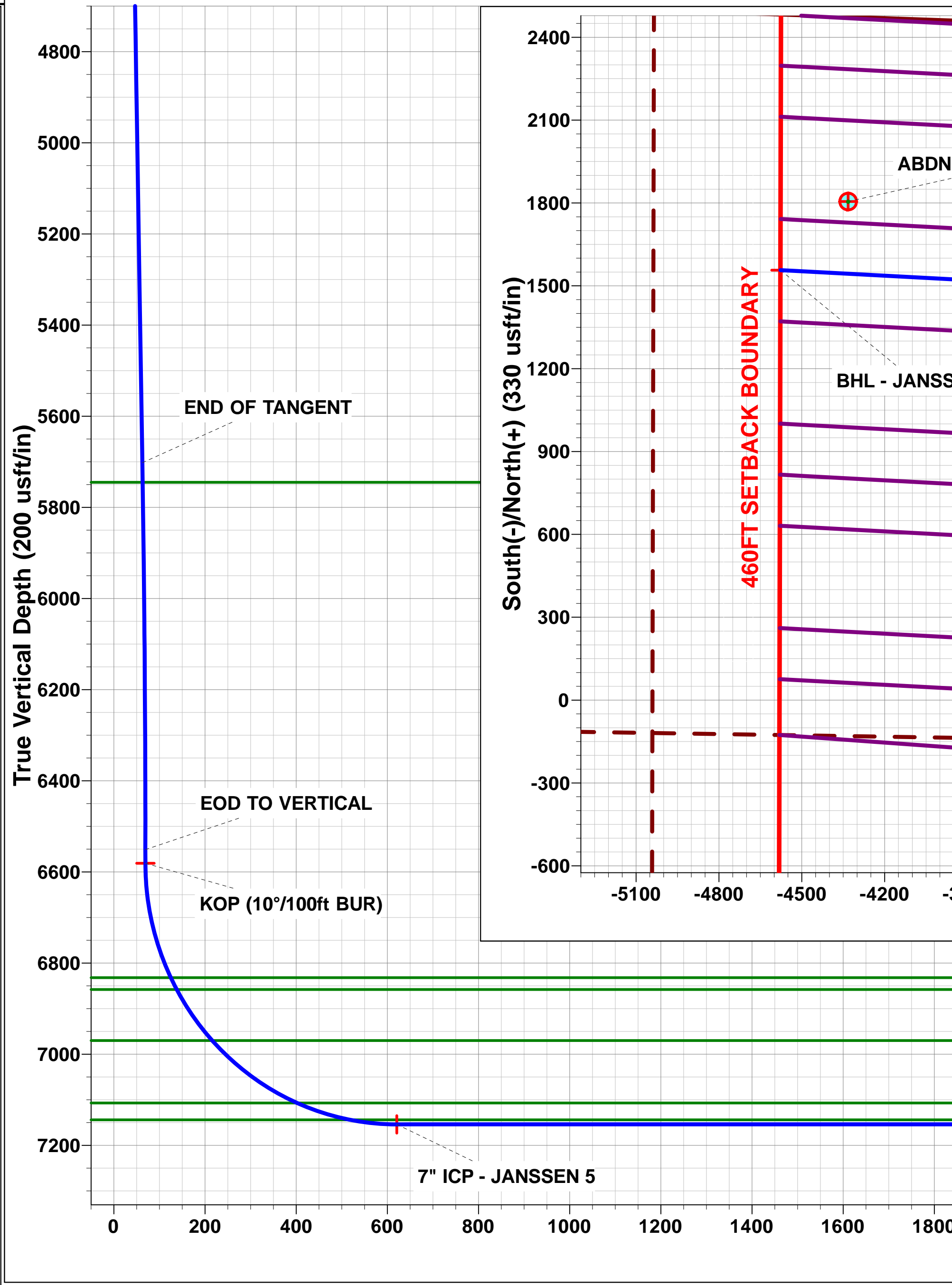
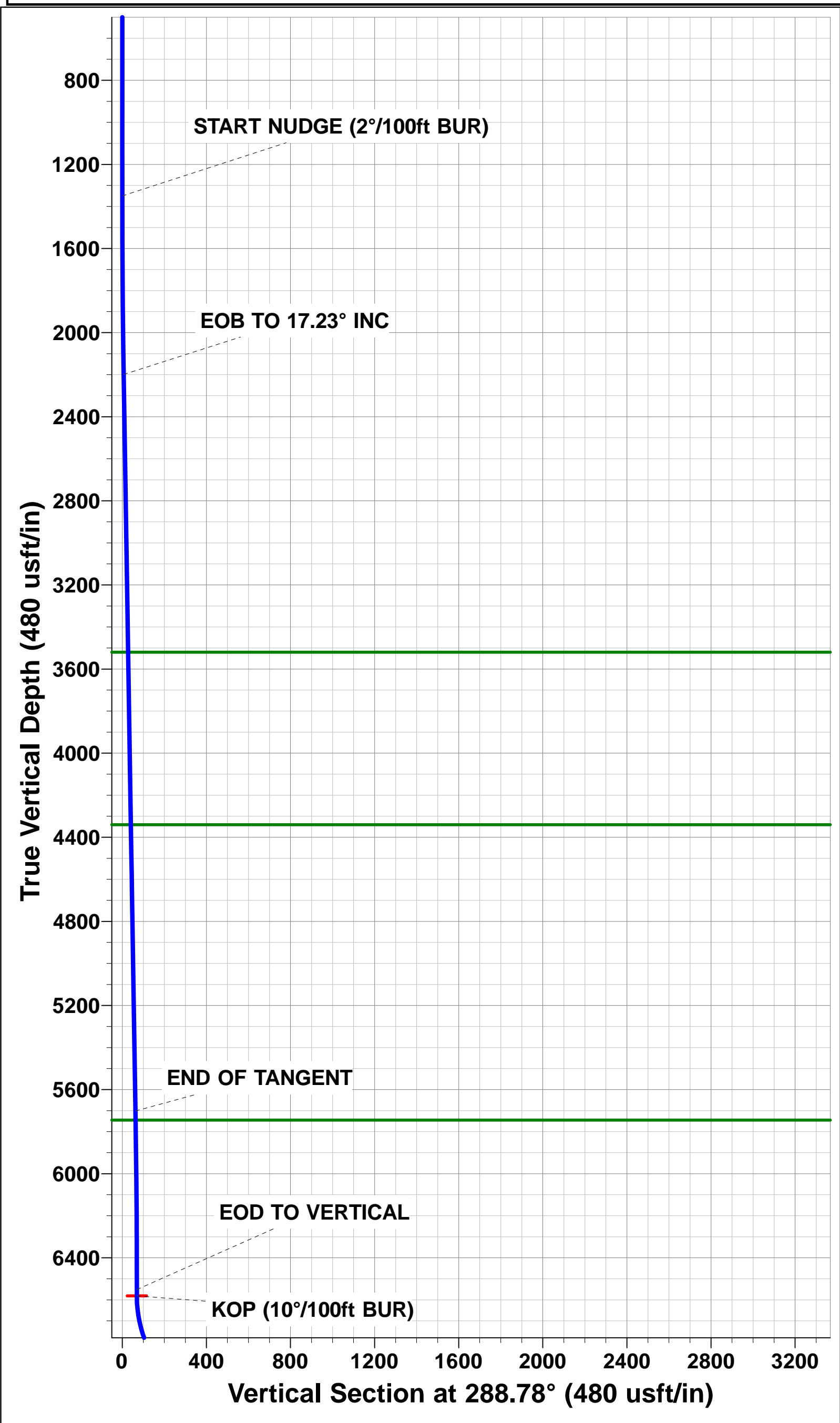
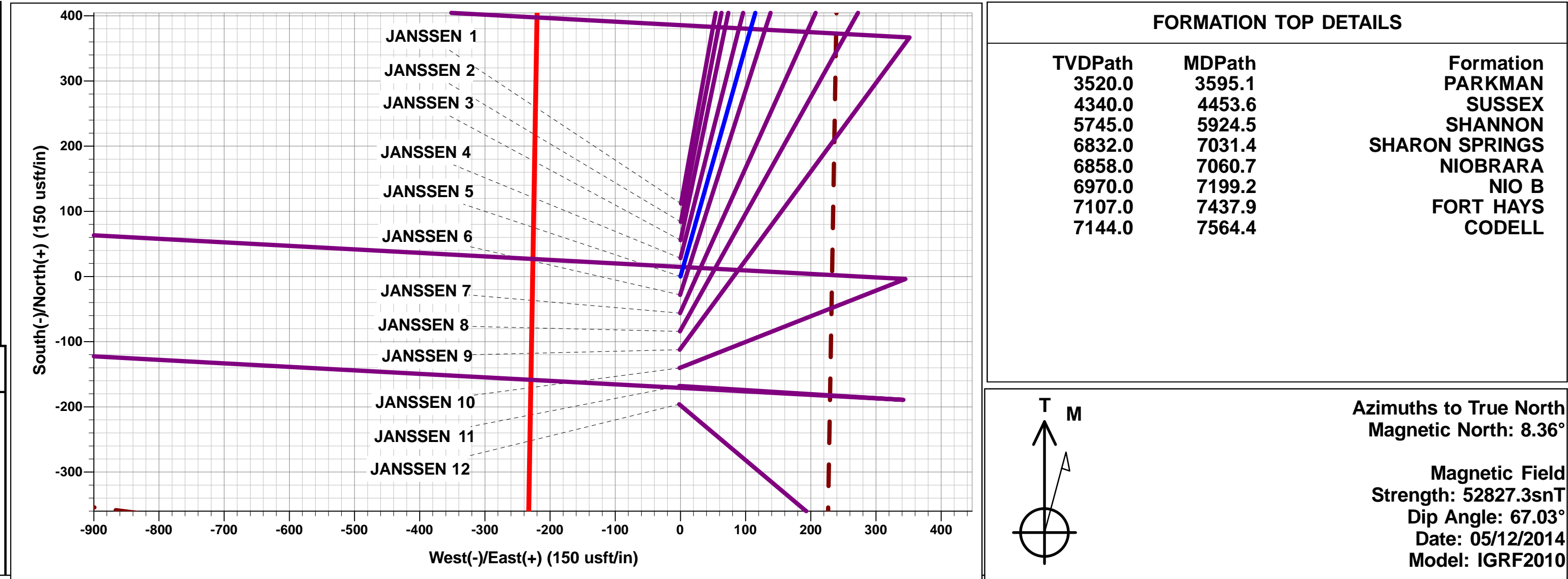




Project: WELD COUNTY, COLORADO (NAD 83)
Site: SE NW SEC. 8 T6N R65W 6th P.M.
Well: JANSSEN 5
Wellbore: ORIGINAL WELLBORE
Design: PROPOSAL #1

ANNOTATIONS									
TVD	MD	Inc	Azi	+N/-S	+E/-W	VSect	Dep	Annotation	
1350.0	1350.0	0.00	0.00	0.0	0.0	0.0	0.0	START NUDGE (2°/100ft BUR)	
2198.8	2211.7	17.23	15.83	123.8	35.1	6.6	128.6	EOB TO 17.23° INC	
5702.2	5879.8	17.23	15.83	1169.3	331.6	62.6	1215.5	END OF TANGENT	
6551.0	6741.6	0.00	0.00	1293.1	366.7	69.2	1344.1	EOD TO VERTICAL	
6581.0	6771.6	0.00	0.00	1293.1	366.7	69.2	1344.1	KOP (10°/100ft BUR)	
7154.0	7671.7	90.00	273.05	1323.6	-205.5	620.8	1917.1	7" ICP - JANSSEN 5	
7154.0	12049.5	90.00	273.06	1556.8	-4577.2	4834.7	6295.0	BHL - JANSSEN 5	

WELLBORE TARGET DETAILS (LAT/LONG)					
Name	TVD	+N/-S	+E/-W	Latitude	Longitude
KOP - JANSSEN 5	6581.0	1293.1	366.7	40.506638	-104.686952
7" ICP - JANSSEN 5	7154.0	1323.6	-205.5	40.506722	-104.689010
BHL - JANSSEN 5	7154.0	1556.8	-4577.2	40.507361	-104.704731



Planning Report



Database:	EDM 5000.1 Single User Db	Local Co-ordinate Reference:	Well JANSSEN 5
Company:	EXTRACTION OIL & GAS	TVD Reference:	KB-EST @ 4802.0usft (Original Well Elev)
Project:	WELD COUNTY, COLORADO (NAD 83)	MD Reference:	KB-EST @ 4802.0usft (Original Well Elev)
Site:	SE NW SEC. 8 T6N R65W 6th P.M.	North Reference:	True
Well:	JANSSEN 5	Survey Calculation Method:	Minimum Curvature
Wellbore:	ORIGINAL WELLBORE		
Design:	PROPOSAL #1		

Project	WELD COUNTY, COLORADO (NAD 83)		
Map System:	US State Plane 1983	System Datum:	Mean Sea Level
Geo Datum:	North American Datum 1983		
Map Zone:	Colorado Northern Zone		Using geodetic scale factor

Site	SE NW SEC. 8 T6N R65W 6th P.M.		
Site Position:		Northing:	1,427,260.85 usft
From:	Lat/Long	Easting:	3,225,727.81 usft
Position Uncertainty:	0.0 usft	Slot Radius:	1.10000ft
		Latitude:	40.503396
		Longitude:	-104.688268
		Grid Convergence:	0.52 °

Well	JANSSEN 5		
Well Position	+N/-S	-111.9 usft	Northing:
	+E/-W	-0.8 usft	Easting:
Position Uncertainty		0.0 usft	Wellhead Elevation:
			Latitude:
			Longitude:
			Ground Level:

Wellbore	ORIGINAL WELLBORE				
Magnetics	Model Name	Sample Date	Declination (°)	Dip Angle (°)	Field Strength (nT)
	IGRF2010	05/12/2014	8.36	67.03	52,827

Design	PROPOSAL #1			
Audit Notes:				
Version:	Phase:	PROTOTYPE	Tie On Depth:	0.0
Vertical Section:	Depth From (TVD) (usft)	+N/-S (usft)	+E/-W (usft)	Direction (°)
	7,154.0	0.0	0.0	288.78

Plan Sections											
MD (usft)	Inc (°)	Azi (°)	Vertical Depth	SS (usft)	+N/-S (usft)	+E/-W (usft)	Dogleg Rate (°/100usf)	Build Rate (°/100usf)	Turn Rate (°/100usf)	TFO (°)	Target
0.0	0.00	0.00	0.0	-4,802.0	0.0	0.0	0.00	0.00	0.00	0.00	
1,350.0	0.00	0.00	1,350.0	-3,452.0	0.0	0.0	0.00	0.00	0.00	0.00	
2,211.7	17.23	15.83	2,198.8	-2,603.2	123.8	35.1	2.00	2.00	0.00	15.83	
5,879.8	17.23	15.83	5,702.2	900.2	1,169.3	331.6	0.00	0.00	0.00	0.00	
6,741.6	0.00	0.00	6,551.0	1,749.0	1,293.1	366.7	2.00	-2.00	0.00	180.00	
6,771.6	0.00	0.00	6,581.0	1,779.0	1,293.1	366.7	0.00	0.00	0.00	0.00	KOP - JANSSEN 5
7,671.7	90.00	273.05	7,154.0	2,352.0	1,323.6	-205.5	10.00	10.00	-9.66	273.05	7" ICP - JANSSEN
12,049.5	90.00	273.06	7,154.0	2,352.0	1,556.8	-4,577.2	0.00	0.00	0.00	104.71	BHL - JANSSEN 5

Planning Report



Database:	EDM 5000.1 Single User Db	Local Co-ordinate Reference:	Well JANSSEN 5
Company:	EXTRACTION OIL & GAS	TVD Reference:	KB-EST @ 4802.0usft (Original Well Elev)
Project:	WELD COUNTY, COLORADO (NAD 83)	MD Reference:	KB-EST @ 4802.0usft (Original Well Elev)
Site:	SE NW SEC. 8 T6N R65W 6th P.M.	North Reference:	True
Well:	JANSSEN 5	Survey Calculation Method:	Minimum Curvature
Wellbore:	ORIGINAL WELLBORE		
Design:	PROPOSAL #1		

Planned Survey

MD (usft)	Inc (°)	Azi (°)	TVD (usft)	SS (usft)	+N/-S (usft)	+E/-W (usft)	Vertical Section (usft)	Dogleg Rate (°/100usft)	Build Rate (°/100usft)	Turn Rate (°/100usft)
0.0	0.00	0.00	0.0	4,802.00	0.0	0.0	0.0	0.00	0.00	0.00
100.0	0.00	0.00	100.0	4,702.00	0.0	0.0	0.0	0.00	0.00	0.00
200.0	0.00	0.00	200.0	4,602.00	0.0	0.0	0.0	0.00	0.00	0.00
300.0	0.00	0.00	300.0	4,502.00	0.0	0.0	0.0	0.00	0.00	0.00
400.0	0.00	0.00	400.0	4,402.00	0.0	0.0	0.0	0.00	0.00	0.00
500.0	0.00	0.00	500.0	4,302.00	0.0	0.0	0.0	0.00	0.00	0.00
600.0	0.00	0.00	600.0	4,202.00	0.0	0.0	0.0	0.00	0.00	0.00
700.0	0.00	0.00	700.0	4,102.00	0.0	0.0	0.0	0.00	0.00	0.00
800.0	0.00	0.00	800.0	4,002.00	0.0	0.0	0.0	0.00	0.00	0.00
900.0	0.00	0.00	900.0	3,902.00	0.0	0.0	0.0	0.00	0.00	0.00
1,000.0	0.00	0.00	1,000.0	3,802.00	0.0	0.0	0.0	0.00	0.00	0.00
1,100.0	0.00	0.00	1,100.0	3,702.00	0.0	0.0	0.0	0.00	0.00	0.00
1,200.0	0.00	0.00	1,200.0	3,602.00	0.0	0.0	0.0	0.00	0.00	0.00
1,300.0	0.00	0.00	1,300.0	3,502.00	0.0	0.0	0.0	0.00	0.00	0.00
START NUDGE (2°/100ft BUR)										
1,350.0	0.00	0.00	1,350.0	3,452.00	0.0	0.0	0.0	0.00	0.00	0.00
1,400.0	1.00	15.83	1,400.0	3,402.00	0.4	0.1	0.0	2.00	2.00	0.00
1,500.0	3.00	15.83	1,499.9	3,302.07	3.8	1.1	0.2	2.00	2.00	0.00
1,600.0	5.00	15.83	1,599.7	3,202.32	10.5	3.0	0.6	2.00	2.00	0.00
1,700.0	7.00	15.83	1,699.1	3,102.87	20.5	5.8	1.1	2.00	2.00	0.00
1,800.0	9.00	15.83	1,798.2	3,003.85	33.9	9.6	1.8	2.00	2.00	0.00
1,900.0	11.00	15.83	1,896.6	2,905.37	50.6	14.4	2.7	2.00	2.00	0.00
2,000.0	13.00	15.83	1,994.4	2,807.56	70.6	20.0	3.8	2.00	2.00	0.00
2,100.0	15.00	15.83	2,091.5	2,710.54	93.9	26.6	5.0	2.00	2.00	0.00
2,200.0	17.00	15.83	2,187.6	2,614.42	120.4	34.2	6.4	2.00	2.00	0.00
EOB TO 17.23° INC										
2,211.7	17.23	15.83	2,198.8	2,603.19	123.8	35.1	6.6	2.00	2.00	0.00
2,300.0	17.23	15.83	2,283.1	2,518.90	148.9	42.2	8.0	0.00	0.00	0.00
2,400.0	17.23	15.83	2,378.6	2,423.39	177.4	50.3	9.5	0.00	0.00	0.00
2,500.0	17.23	15.83	2,474.1	2,327.88	205.9	58.4	11.0	0.00	0.00	0.00
2,600.0	17.23	15.83	2,569.6	2,232.37	234.4	66.5	12.5	0.00	0.00	0.00
2,700.0	17.23	15.83	2,665.1	2,136.86	262.9	74.6	14.1	0.00	0.00	0.00
2,800.0	17.23	15.83	2,760.6	2,041.35	291.4	82.6	15.6	0.00	0.00	0.00
2,900.0	17.23	15.83	2,856.2	1,945.84	319.9	90.7	17.1	0.00	0.00	0.00
3,000.0	17.23	15.83	2,951.7	1,850.33	348.4	98.8	18.7	0.00	0.00	0.00
3,100.0	17.23	15.83	3,047.2	1,754.82	377.0	106.9	20.2	0.00	0.00	0.00
3,200.0	17.23	15.83	3,142.7	1,659.31	405.5	115.0	21.7	0.00	0.00	0.00
3,300.0	17.23	15.83	3,238.2	1,563.80	434.0	123.1	23.2	0.00	0.00	0.00
3,400.0	17.23	15.83	3,333.7	1,468.29	462.5	131.1	24.8	0.00	0.00	0.00
3,500.0	17.23	15.83	3,429.2	1,372.78	491.0	139.2	26.3	0.00	0.00	0.00
PARKMAN										
3,595.1	17.23	15.83	3,520.0	1,282.00	518.1	146.9	27.7	0.00	0.00	0.00
3,600.0	17.23	15.83	3,524.7	1,277.27	519.5	147.3	27.8	0.00	0.00	0.00
3,700.0	17.23	15.83	3,620.2	1,181.76	548.0	155.4	29.3	0.00	0.00	0.00
3,800.0	17.23	15.83	3,715.7	1,086.25	576.5	163.5	30.9	0.00	0.00	0.00
3,900.0	17.23	15.83	3,811.3	990.74	605.0	171.6	32.4	0.00	0.00	0.00
4,000.0	17.23	15.83	3,906.8	895.23	633.5	179.6	33.9	0.00	0.00	0.00
4,100.0	17.23	15.83	4,002.3	799.72	662.0	187.7	35.4	0.00	0.00	0.00
4,200.0	17.23	15.83	4,097.8	704.21	690.5	195.8	37.0	0.00	0.00	0.00
4,300.0	17.23	15.83	4,193.3	608.70	719.0	203.9	38.5	0.00	0.00	0.00
4,400.0	17.23	15.83	4,288.8	513.19	747.5	212.0	40.0	0.00	0.00	0.00
SUSSEX										
4,453.6	17.23	15.83	4,340.0	462.00	762.8	216.3	40.8	0.00	0.00	0.00
4,500.0	17.23	15.83	4,384.3	417.68	776.0	220.1	41.5	0.00	0.00	0.00

Database:	EDM 5000.1 Single User Db	Local Co-ordinate Reference:	Well JANSSEN 5
Company:	EXTRACTION OIL & GAS	TVD Reference:	KB-EST @ 4802.0usft (Original Well Elev)
Project:	WELD COUNTY, COLORADO (NAD 83)	MD Reference:	KB-EST @ 4802.0usft (Original Well Elev)
Site:	SE NW SEC. 8 T6N R65W 6th P.M.	North Reference:	True
Well:	JANSSEN 5	Survey Calculation Method:	Minimum Curvature
Wellbore:	ORIGINAL WELLBORE		
Design:	PROPOSAL #1		

Planned Survey

MD (usft)	Inc (°)	Azi (°)	TVD (usft)	SS (usft)	+N/-S (usft)	+E/-W (usft)	Vertical Section (usft)	Dogleg Rate (°/100usft)	Build Rate (°/100usft)	Turn Rate (°/100usft)
4,600.0	17.23	15.83	4,479.8	322.17	804.5	228.1	43.1	0.00	0.00	0.00
4,700.0	17.23	15.83	4,575.3	226.67	833.0	236.2	44.6	0.00	0.00	0.00
4,800.0	17.23	15.83	4,670.8	131.16	861.5	244.3	46.1	0.00	0.00	0.00
4,900.0	17.23	15.83	4,766.4	35.65	890.0	252.4	47.6	0.00	0.00	0.00
5,000.0	17.23	15.83	4,861.9	-59.86	918.5	260.5	49.2	0.00	0.00	0.00
5,100.0	17.23	15.83	4,957.4	-155.37	947.1	268.6	50.7	0.00	0.00	0.00
5,200.0	17.23	15.83	5,052.9	-250.88	975.6	276.7	52.2	0.00	0.00	0.00
5,300.0	17.23	15.83	5,148.4	-346.39	1,004.1	284.7	53.7	0.00	0.00	0.00
5,400.0	17.23	15.83	5,243.9	-441.90	1,032.6	292.8	55.3	0.00	0.00	0.00
5,500.0	17.23	15.83	5,339.4	-537.41	1,061.1	300.9	56.8	0.00	0.00	0.00
5,600.0	17.23	15.83	5,434.9	-632.92	1,089.6	309.0	58.3	0.00	0.00	0.00
5,700.0	17.23	15.83	5,530.4	-728.43	1,118.1	317.1	59.8	0.00	0.00	0.00
5,800.0	17.23	15.83	5,625.9	-823.94	1,146.6	325.2	61.4	0.00	0.00	0.00
END OF TANGENT										
5,879.8	17.23	15.83	5,702.2	-900.19	1,169.3	331.6	62.6	0.00	0.00	0.00
5,900.0	16.83	15.83	5,721.5	-919.47	1,175.0	333.2	62.9	2.00	-2.00	0.00
SHANNON										
5,924.5	16.34	15.83	5,745.0	-943.00	1,181.8	335.1	63.3	2.00	-2.00	0.00
6,000.0	14.83	15.83	5,817.7	-1,015.68	1,201.3	340.7	64.3	2.00	-2.00	0.00
6,100.0	12.83	15.83	5,914.8	-1,112.77	1,224.3	347.2	65.5	2.00	-2.00	0.00
6,200.0	10.83	15.83	6,012.6	-1,210.64	1,244.0	352.8	66.6	2.00	-2.00	0.00
6,300.0	8.83	15.83	6,111.2	-1,309.17	1,260.4	357.4	67.5	2.00	-2.00	0.00
6,400.0	6.83	15.83	6,210.2	-1,408.23	1,273.5	361.2	68.2	2.00	-2.00	0.00
6,500.0	4.83	15.83	6,309.7	-1,507.71	1,283.3	363.9	68.7	2.00	-2.00	0.00
6,600.0	2.83	15.83	6,409.5	-1,607.48	1,289.7	365.7	69.0	2.00	-2.00	0.00
6,700.0	0.83	15.83	6,509.4	-1,707.42	1,292.8	366.6	69.2	2.00	-2.00	0.00
EOD TO VERTICAL										
6,741.6	0.00	0.00	6,551.0	-1,749.00	1,293.1	366.7	69.2	2.00	-2.00	0.00
KOP (10°/100ft BUR)										
6,771.6	0.00	0.00	6,581.0	-1,779.00	1,293.1	366.7	69.2	0.00	0.00	0.00
6,800.0	2.84	273.05	6,609.4	-1,807.41	1,293.1	366.0	69.9	10.00	10.00	0.00
6,900.0	12.84	273.05	6,708.3	-1,906.35	1,293.9	352.4	83.0	10.00	10.00	0.00
7,000.0	22.84	273.05	6,803.4	-2,001.42	1,295.5	321.8	112.5	10.00	10.00	0.00
SHARON SPRINGS										
7,031.4	25.98	273.05	6,832.0	-2,030.00	1,296.2	308.9	124.9	10.00	10.00	0.00
NIORARA										
7,060.7	28.91	273.05	6,858.0	-2,056.00	1,296.9	295.4	137.9	10.00	10.00	0.00
7,100.0	32.84	273.05	6,891.7	-2,089.73	1,298.0	275.3	157.4	10.00	10.00	0.00
NIO B										
7,199.2	42.76	273.05	6,970.0	-2,168.00	1,301.2	214.6	215.8	10.00	10.00	0.00
7,200.0	42.84	273.05	6,970.6	-2,168.61	1,301.2	214.1	216.3	10.00	10.00	0.00
7,300.0	52.84	273.05	7,037.6	-2,235.64	1,305.2	140.2	287.6	10.00	10.00	0.00
7,400.0	62.84	273.05	7,090.8	-2,288.81	1,309.7	55.7	369.0	10.00	10.00	0.00
FORT HAYS										
7,437.9	66.63	273.05	7,107.0	-2,305.00	1,311.5	21.5	402.0	10.00	10.00	0.00
7,500.0	72.84	273.05	7,128.5	-2,326.48	1,314.6	-36.6	458.0	10.00	10.00	0.00
CODELL										
7,564.4	79.28	273.05	7,144.0	-2,342.00	1,317.9	-99.1	518.2	10.00	10.00	0.00
7,600.0	82.84	273.05	7,149.5	-2,347.53	1,319.8	-134.1	552.0	10.00	10.00	0.00
7" ICP - JANSSEN 5										
7,671.7	90.00	273.05	7,154.0	-2,352.00	1,323.6	-205.5	620.8	10.00	10.00	0.00
7,700.0	90.00	273.05	7,154.0	-2,352.00	1,325.1	-233.8	648.0	0.00	0.00	0.00

Planning Report



Database:	EDM 5000.1 Single User Db	Local Co-ordinate Reference:	Well JANSSEN 5
Company:	EXTRACTION OIL & GAS	TVD Reference:	KB-EST @ 4802.0usft (Original Well Elev)
Project:	WELD COUNTY, COLORADO (NAD 83)	MD Reference:	KB-EST @ 4802.0usft (Original Well Elev)
Site:	SE NW SEC. 8 T6N R65W 6th P.M.	North Reference:	True
Well:	JANSSEN 5	Survey Calculation Method:	Minimum Curvature
Wellbore:	ORIGINAL WELLBORE		
Design:	PROPOSAL #1		

Planned Survey										
MD (usft)	Inc (°)	Azi (°)	TVD (usft)	SS (usft)	+N/-S (usft)	+E/-W (usft)	Vertical Section (usft)	Dogleg Rate (°/100usft)	Build Rate (°/100usft)	Turn Rate (°/100usft)
7,800.0	90.00	273.05	7,154.0	-2,352.00	1,330.4	-333.7	744.3	0.00	0.00	0.00
7,900.0	90.00	273.05	7,154.0	-2,352.00	1,335.7	-433.5	840.5	0.00	0.00	0.00
8,000.0	90.00	273.05	7,154.0	-2,351.99	1,341.0	-533.4	936.8	0.00	0.00	0.00
8,100.0	90.00	273.05	7,154.0	-2,351.99	1,346.4	-633.2	1,033.0	0.00	0.00	0.00
8,200.0	90.00	273.05	7,154.0	-2,351.99	1,351.7	-733.1	1,129.3	0.00	0.00	0.00
8,300.0	90.00	273.05	7,154.0	-2,351.99	1,357.0	-833.0	1,225.6	0.00	0.00	0.00
8,400.0	90.00	273.05	7,154.0	-2,351.99	1,362.3	-932.8	1,321.8	0.00	0.00	0.00
8,500.0	90.00	273.05	7,154.0	-2,351.98	1,367.6	-1,032.7	1,418.1	0.00	0.00	0.00
8,600.0	90.00	273.05	7,154.0	-2,351.98	1,373.0	-1,132.5	1,514.3	0.00	0.00	0.00
8,700.0	90.00	273.05	7,154.0	-2,351.98	1,378.3	-1,232.4	1,610.6	0.00	0.00	0.00
8,800.0	90.00	273.05	7,154.0	-2,351.98	1,383.6	-1,332.2	1,706.8	0.00	0.00	0.00
8,900.0	90.00	273.05	7,154.0	-2,351.98	1,388.9	-1,432.1	1,803.1	0.00	0.00	0.00
9,000.0	90.00	273.05	7,154.0	-2,351.98	1,394.3	-1,532.0	1,899.3	0.00	0.00	0.00
9,100.0	90.00	273.05	7,154.0	-2,351.98	1,399.6	-1,631.8	1,995.6	0.00	0.00	0.00
9,200.0	90.00	273.05	7,154.0	-2,351.98	1,404.9	-1,731.7	2,091.8	0.00	0.00	0.00
9,300.0	90.00	273.05	7,154.0	-2,351.98	1,410.2	-1,831.5	2,188.1	0.00	0.00	0.00
9,400.0	90.00	273.05	7,154.0	-2,351.98	1,415.6	-1,931.4	2,284.3	0.00	0.00	0.00
9,500.0	90.00	273.05	7,154.0	-2,351.98	1,420.9	-2,031.3	2,380.6	0.00	0.00	0.00
9,600.0	90.00	273.05	7,154.0	-2,351.98	1,426.2	-2,131.1	2,476.9	0.00	0.00	0.00
9,700.0	90.00	273.05	7,154.0	-2,351.98	1,431.5	-2,231.0	2,573.1	0.00	0.00	0.00
9,800.0	90.00	273.05	7,154.0	-2,351.98	1,436.9	-2,330.8	2,669.4	0.00	0.00	0.00
9,900.0	90.00	273.05	7,154.0	-2,351.98	1,442.2	-2,430.7	2,765.6	0.00	0.00	0.00
10,000.0	90.00	273.05	7,154.0	-2,351.98	1,447.5	-2,530.5	2,861.9	0.00	0.00	0.00
10,100.0	90.00	273.05	7,154.0	-2,351.98	1,452.8	-2,630.4	2,958.1	0.00	0.00	0.00
10,200.0	90.00	273.05	7,154.0	-2,351.98	1,458.2	-2,730.3	3,054.4	0.00	0.00	0.00
10,300.0	90.00	273.05	7,154.0	-2,351.98	1,463.5	-2,830.1	3,150.6	0.00	0.00	0.00
10,400.0	90.00	273.05	7,154.0	-2,351.98	1,468.8	-2,930.0	3,246.9	0.00	0.00	0.00
10,500.0	90.00	273.06	7,154.0	-2,351.98	1,474.2	-3,029.8	3,343.1	0.00	0.00	0.00
10,600.0	90.00	273.06	7,154.0	-2,351.98	1,479.5	-3,129.7	3,439.4	0.00	0.00	0.00
10,700.0	90.00	273.06	7,154.0	-2,351.98	1,484.8	-3,229.5	3,535.7	0.00	0.00	0.00
10,800.0	90.00	273.06	7,154.0	-2,351.98	1,490.2	-3,329.4	3,631.9	0.00	0.00	0.00
10,900.0	90.00	273.06	7,154.0	-2,351.98	1,495.5	-3,429.3	3,728.2	0.00	0.00	0.00
11,000.0	90.00	273.06	7,154.0	-2,351.98	1,500.8	-3,529.1	3,824.4	0.00	0.00	0.00
11,100.0	90.00	273.06	7,154.0	-2,351.98	1,506.2	-3,629.0	3,920.7	0.00	0.00	0.00
11,200.0	90.00	273.06	7,154.0	-2,351.98	1,511.5	-3,728.8	4,016.9	0.00	0.00	0.00
11,300.0	90.00	273.06	7,154.0	-2,351.99	1,516.8	-3,828.7	4,113.2	0.00	0.00	0.00
11,400.0	90.00	273.06	7,154.0	-2,351.99	1,522.1	-3,928.6	4,209.4	0.00	0.00	0.00
11,500.0	90.00	273.06	7,154.0	-2,351.99	1,527.5	-4,028.4	4,305.7	0.00	0.00	0.00
11,600.0	90.00	273.06	7,154.0	-2,351.99	1,532.8	-4,128.3	4,402.0	0.00	0.00	0.00
11,700.0	90.00	273.06	7,154.0	-2,351.99	1,538.2	-4,228.1	4,498.2	0.00	0.00	0.00
11,800.0	90.00	273.06	7,154.0	-2,351.99	1,543.5	-4,328.0	4,594.5	0.00	0.00	0.00
11,900.0	90.00	273.06	7,154.0	-2,352.00	1,548.8	-4,427.8	4,690.7	0.00	0.00	0.00
12,000.0	90.00	273.06	7,154.0	-2,352.00	1,554.2	-4,527.7	4,787.0	0.00	0.00	0.00
BHL - JANSSEN 5										
12,049.5	90.00	273.06	7,154.0	-2,352.00	1,556.8	-4,577.2	4,834.7	0.00	0.00	0.00

Database:	EDM 5000.1 Single User Db	Local Co-ordinate Reference:	Well JANSSEN 5
Company:	EXTRACTION OIL & GAS	TVD Reference:	KB-EST @ 4802.0usft (Original Well Elev)
Project:	WELD COUNTY, COLORADO (NAD 83)	MD Reference:	KB-EST @ 4802.0usft (Original Well Elev)
Site:	SE NW SEC. 8 T6N R65W 6th P.M.	North Reference:	True
Well:	JANSSEN 5	Survey Calculation Method:	Minimum Curvature
Wellbore:	ORIGINAL WELLBORE		
Design:	PROPOSAL #1		

Formations

MD (usft)	TVD (usft)	Name	Lithology	Dip (°)	Dip Direction (°)
3,595.1	3,520.0	PARKMAN			
4,453.6	4,340.0	SUSSEX			
5,924.5	5,745.0	SHANNON			
7,031.4	6,832.0	SHARON SPRINGS			
7,060.7	6,858.0	NIOBRARA			
7,199.2	6,970.0	NIO B			
7,437.9	7,107.0	FORT HAYS			
7,564.4	7,144.0	CODELL			

Plan Annotations

MD (usft)	TVD (usft)	Local Coordinates		Comment
		+N/-S (usft)	+E/-W (usft)	
1,350.0	1,350.0	0.0	0.0	START NUDGE (2°/100ft BUR)
2,211.7	2,198.8	123.8	35.1	EOB TO 17.23° INC
5,879.8	5,702.2	1,169.3	331.6	END OF TANGENT
6,741.6	6,551.0	1,293.1	366.7	EOD TO VERTICAL
6,771.6	6,581.0	1,293.1	366.7	KOP (10°/100ft BUR)
7,671.7	7,154.0	1,323.6	-205.5	7" ICP - JANSSEN 5
12,049.5	7,154.0	1,556.8	-4,577.2	BHL - JANSSEN 5