

# WELL LOCATION CERTIFICATE: JANSSEN 2

NW COR. SEC. 8  
3/4" ALUM. CAP  
PLS 7242

SECTION 8, TOWNSHIP 6 NORTH, RANGE 65 WEST, 6TH P.M.

S 86°28'28" E 2664.55'

S 85°22'28" E 2625.31'

NE COR. SEC. 8  
2 1/2" ALUM. CAP  
ILLEGIBLE

BH- 185' FNL  
2187' FEL

LP- 185' FNL  
2196' FWL

N 1/4 COR. SEC. 8  
2 1/2" ALUM. CAP  
PLS 12374

N 00°19'22" W 2566.33'

N 87°29'20" W 4388.57'

N 00°06'01" W 2626.64'

N 81°03'04" W 2621.20'

N 81°02'58" W 2630.48'

N 00°36'20" W 2817.31'

S 00°36'20" W 2817.31'

S 00°36'20" W 2817.31'

S 00°36'20" W 2817.31'

S 00°36'20" W 2817.31'

S 00°36'20" W 2817.31'

S 00°36'20" W 2817.31'

S 00°36'20" W 2817.31'

S 00°36'20" W 2817.31'

S 00°36'20" W 2817.31'

S 00°36'20" W 2817.31'

S 00°36'20" W 2817.31'

S 00°36'20" W 2817.31'

S 00°36'20" W 2817.31'

W 1/4 COR. SEC. 8  
2 1/2" ALUM. CAP  
PLS 23501

(BASIS OF BEARINGS) SEE NOTE 2

NOTES:  
BH LOCATION PROVIDED BY CLIENT.  
LAND SURFACE USE-IRRIGATED CROP  
SEE ATTACHED MAP FOR ADDITIONAL  
IMPROVEMENTS WITHIN 500'.

PDOP= 1.5  
GPS OPERATOR: BEN HARDENBERGH

8

SURFACE LOCATION  
GROUND ELEVATION= 4779'  
NAD83  
LATITUDE= 40.503319°  
LONGITUDE= 104.688269°

LANDING POINT LOCATION  
NAD83  
LATITUDE= 40.508756°  
LONGITUDE= 104.688965°

BOTTOM HOLE LOCATION  
NAD83  
LATITUDE= 40.509393°  
LONGITUDE= 104.704726°

E 1/4 COR. SEC. 8  
2 1/2" ALUM. CAP  
PLS 38304

SW COR. SEC. 8  
2 1/2" ALUM. CAP  
PLS 23501

S 1/4 COR. SEC. 8  
2 1/2" ALUM. CAP  
PLS 23501

SE COR. SEC. 8  
2 1/2" ALUM. CAP  
ILLEGIBLE

WELL JANSSEN 2 TO BE LOCATED 2147' FNL AND 2397' FWL

## LEGEND

- = EXISTING MONUMENT
- ▲ = LANDING POINT
- = PROPOSED WELL
- LP = LANDING POINT
- ◆ = EXISTING WELL
- BH = BOTTOM HOLE
- ◆ = BOTTOM HOLE

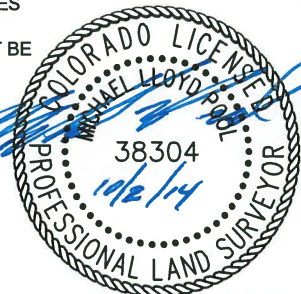
## NOTES:

- THIS FIELD SURVEY CONFORMS TO THE MINIMUM STANDARDS SET BY THE C.O.G.C.C., RULE NO. 215
- BEARINGS AND DISTANCE SHOWN HEREON ARE GRID AND BASED ON THE COLORADO STATE PLANE COORDINATE SYSTEM, NAD 83/2011 BETWEEN MONUMENTS AS LABELED HEREON AND ELEVATIONS SHOWN ARE NAVD 88, AS DERIVED BY GPS OBSERVATIONS.
- GRID DISTANCES ARE SHOWN, AS MEASURED IN THE FIELD, WITH TIES TO WELLS MEASURED PERPENDICULAR TO SECTION LINES.

I, MICHAEL L. POOL, A LICENSED PROFESSIONAL LAND SURVEYOR IN THE STATE OF COLORADO DO HEREBY CERTIFY TO **EXTRACTION OIL & GAS**, THAT THE SURVEY AND WELL LOCATION CERTIFICATE SHOWN HEREON WERE DONE BY ME OR UNDER MY DIRECT SUPERVISION AND THAT THE DRAWING SHOWN HEREON ACCURATELY DEPICTS THE PROPOSED LOCATION OF THE WELL. THIS CERTIFICATE DOES NOT REPRESENT A LAND SURVEY PLAT OR IMPROVEMENT SURVEY PLAT AS DEFINED BY C.R.S. 38-51-102 AND CANNOT BE RELIED UPON TO DETERMINE OWNERSHIP.

MICHAEL L. POOL, PLS 38304  
COLORADO LICENSED PROFESSIONAL LAND SURVEYOR  
FOR AND ON BEHALF OF P.F.S., LLC

0 500 1000  
SCALE: 1"=1000'



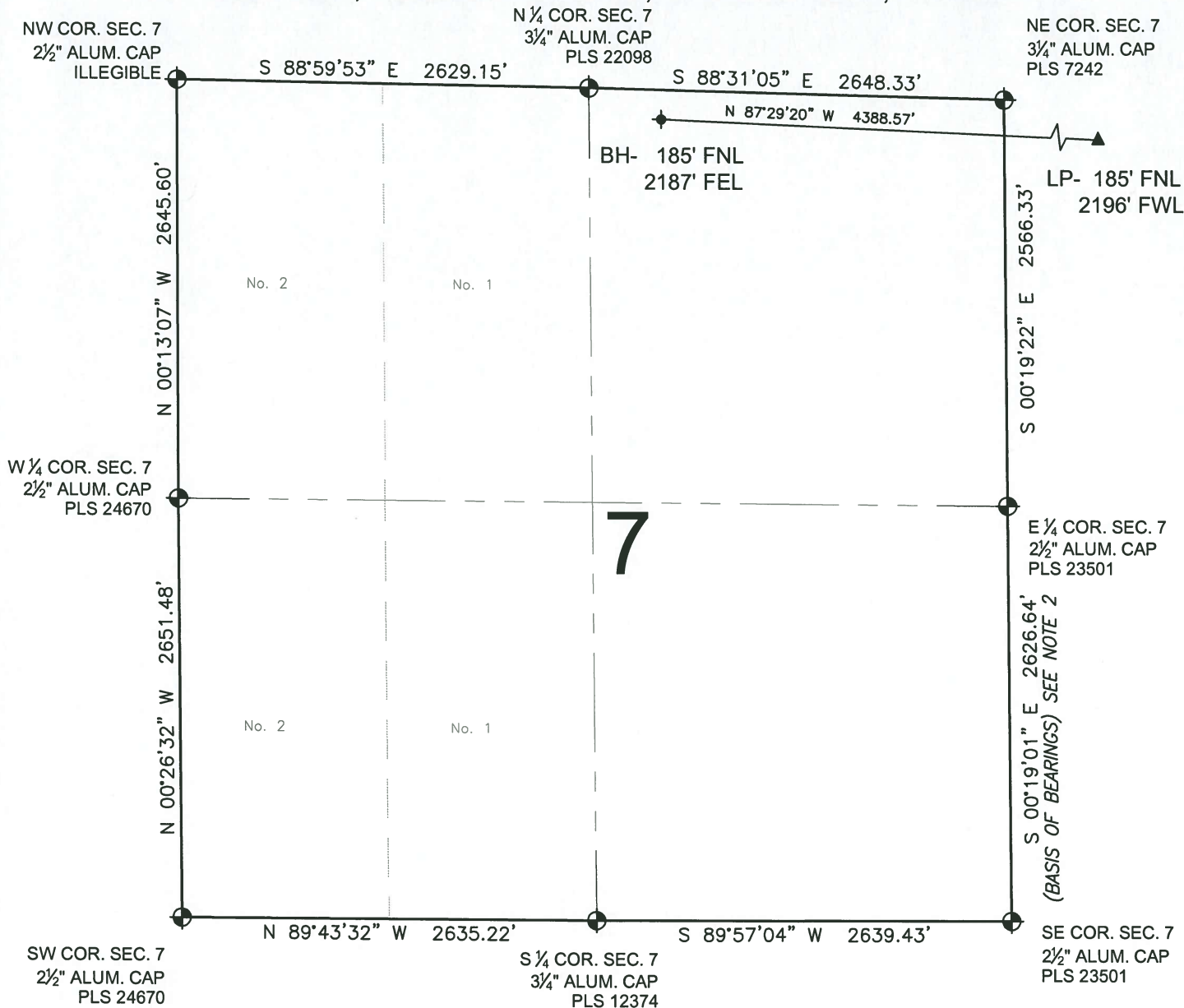
SHEET 1 OF 2

PREPARED BY: <b>PFS</b> Petroleum Field Services, LLC 7535 Hilltop Circle Denver, CO 80221	FIELD DATE: 08-28-14 DRAWING DATE: 09-12-14 BY: MDCA CHECKED: WDW	SURFACE LOCATION: SE 1/4 NW 1/4, SEC. 8, T6N, R65W, 6TH P.M. WELD COUNTY, COLORADO
--	--	---

NOTICE: ACCORDING TO COLORADO LAW YOU MUST COMMENCE ANY LEGAL ACTION BASED UPON ANY DEFECT IN THIS SURVEY WITHIN THREE YEARS AFTER YOU FIRST DISCOVER SUCH DEFECT. IN NO EVENT MAY ANY ACTION BASED UPON ANY DEFECT IN THIS SURVEY BE COMMENCED MORE THAN TEN YEARS FROM THIS SAID DATE OF THIS CERTIFICATION SHOWN HEREON.

# WELL LOCATION CERTIFICATE: JANSSEN 2

SECTION 7, TOWNSHIP 6 NORTH, RANGE 65 WEST, 6TH P.M.



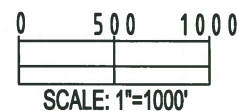
## LEGEND

- ⊕ = EXISTING MONUMENT
- = PROPOSED WELL
- ◆ = EXISTING WELL
- ⊙ = BOTTOM HOLE
- ▲ = LANDING POINT
- LP = LANDING POINT
- BH = BOTTOM HOLE


## NOTES:

1. THIS FIELD SURVEY CONFORMS TO THE MINIMUM STANDARDS SET BY THE C.O.G.C.C., RULE NO. 215
2. BEARINGS AND DISTANCE SHOWN HEREON ARE GRID AND BASED ON THE COLORADO STATE PLANE COORDINATE SYSTEM, NAD 83/2011 BETWEEN MONUMENTS AS LABELED HEREON AND ELEVATIONS SHOWN ARE NAVD 88, AS DERIVED BY GPS OBSERVATIONS.
3. GRID DISTANCES ARE SHOWN, AS MEASURED IN THE FIELD, WITH TIES TO WELLS MEASURED PERPENDICULAR TO SECTION LINES.

SHEET 2 OF 2



MICHAEL L. POOL, PLS 38304  
COLORADO LICENSED PROFESSIONAL LAND SURVEYOR  
FOR AND ON BEHALF OF P.F.S., LLC

PREPARED BY:	FIELD DATE:	SURFACE LOCATION:
 Petroleum Field Services, LLC 7535 Hilltop Circle Denver, CO 80221	08-28-14	SE 1/4 NW 1/4,
	DRAWING DATE:	SEC. 8, T6N, R65W, 6TH P.M.
	09-12-14	
BY:	CHECKED:	WELD COUNTY, COLORADO
MDCA	WDW	

NOTICE: ACCORDING TO COLORADO LAW YOU MUST COMMENCE ANY LEGAL ACTION BASED UPON ANY DEFECT IN THIS SURVEY WITHIN THREE YEARS AFTER YOU FIRST DISCOVER SUCH DEFECT. IN NO EVENT MAY ANY ACTION BASED UPON ANY DEFECT IN THIS SURVEY BE COMMENCED MORE THAN TEN YEARS FROM THIS SAID DATE OF THIS CERTIFICATION SHOWN HEREON.