



County Weld State Colorado

Other Services

SEC 8 TWP 1N RGE 54W

Elevation

Log Measured From Kelly Bushing 12 FT

Drilling Measured From Kelly Bushing

G.L. 4850

03-Sept-2015

1 MO	
7797 FT	

3600 FT

3595 F-1	
Surface	

8.750"	
--------	--

Water	8.34 lbm/a
-------	------------

0.34 lb/in ²	
144.7°F	

194 FT	
POA	

NOA	
08:05	

HD-0343	Coal
---------	------

Fort Lupton, M. Steinma	
----------------------------	--

	Nick
--	------

Renale Record	
From	To

Size (in)	Wt (lbs/Et)

size (in)	weight (lb)
8.63"	24

4.5"	11.6
------	------

[illegible]

Comments

Log ran as per Customer request.

Log recorded with 0 PSI surface induced pressure

No debris found on logging tools upon completion of run.

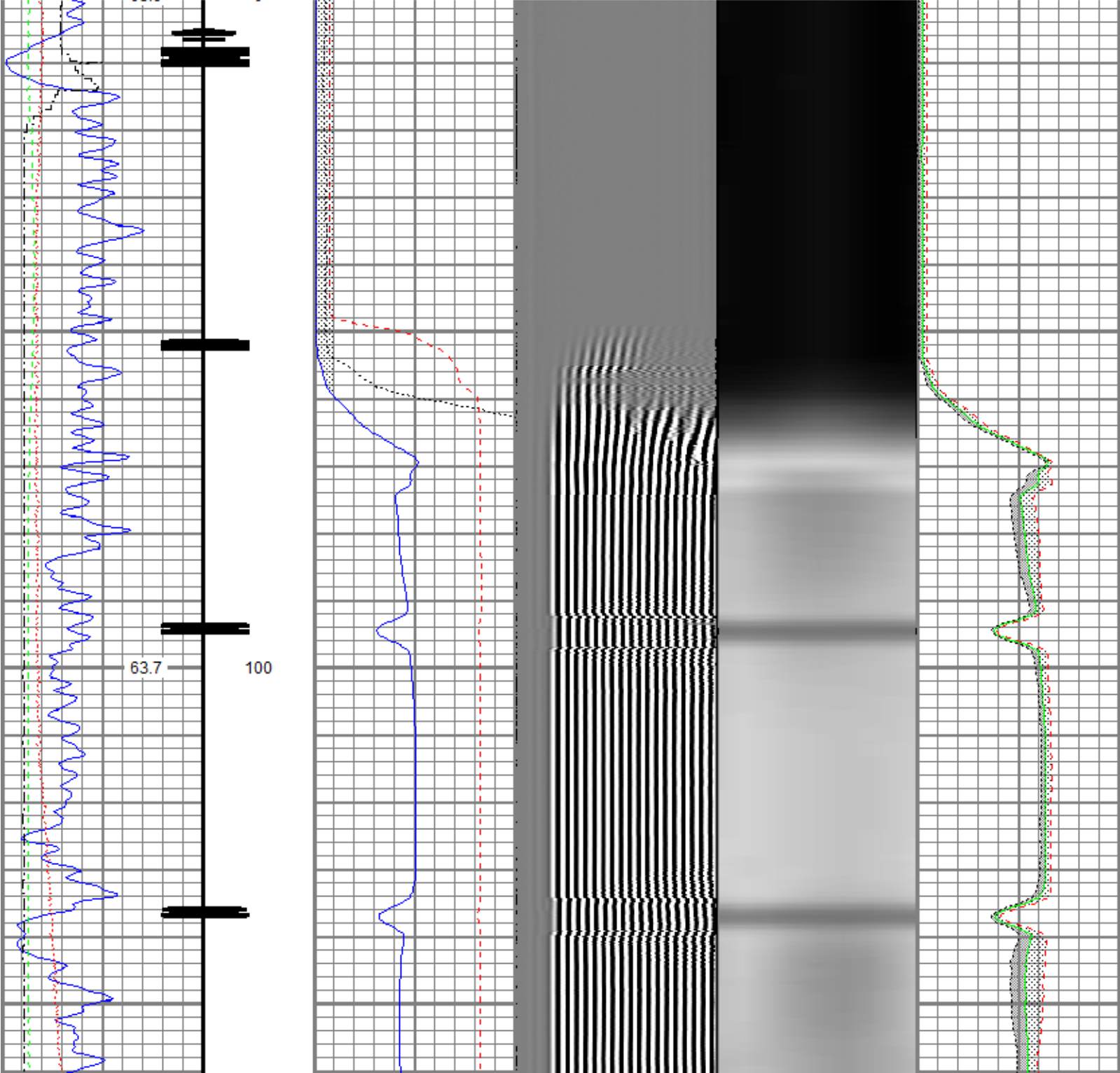
Thank you for choosing FMC Technologies Completion Services, Inc.!!

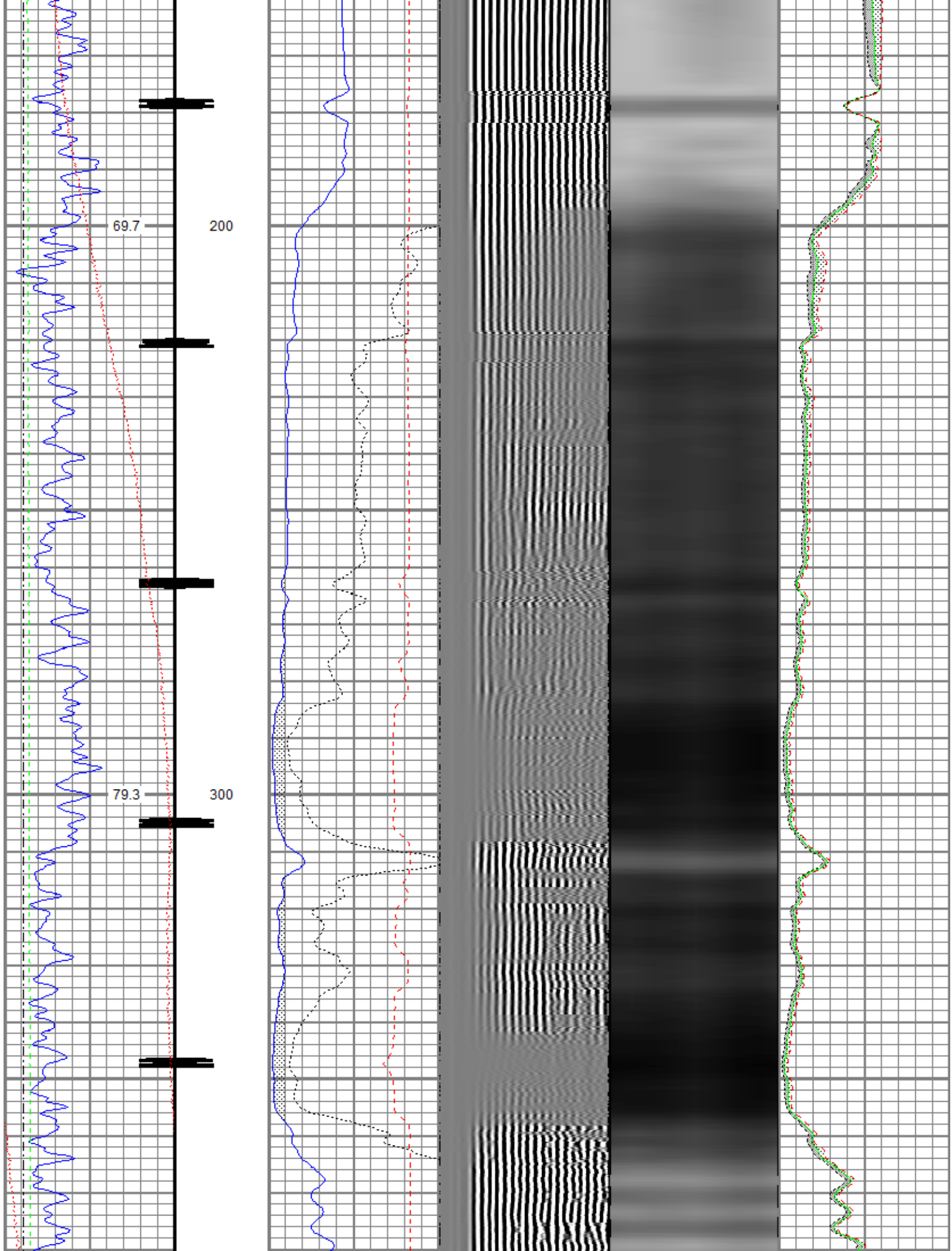
Main Pass

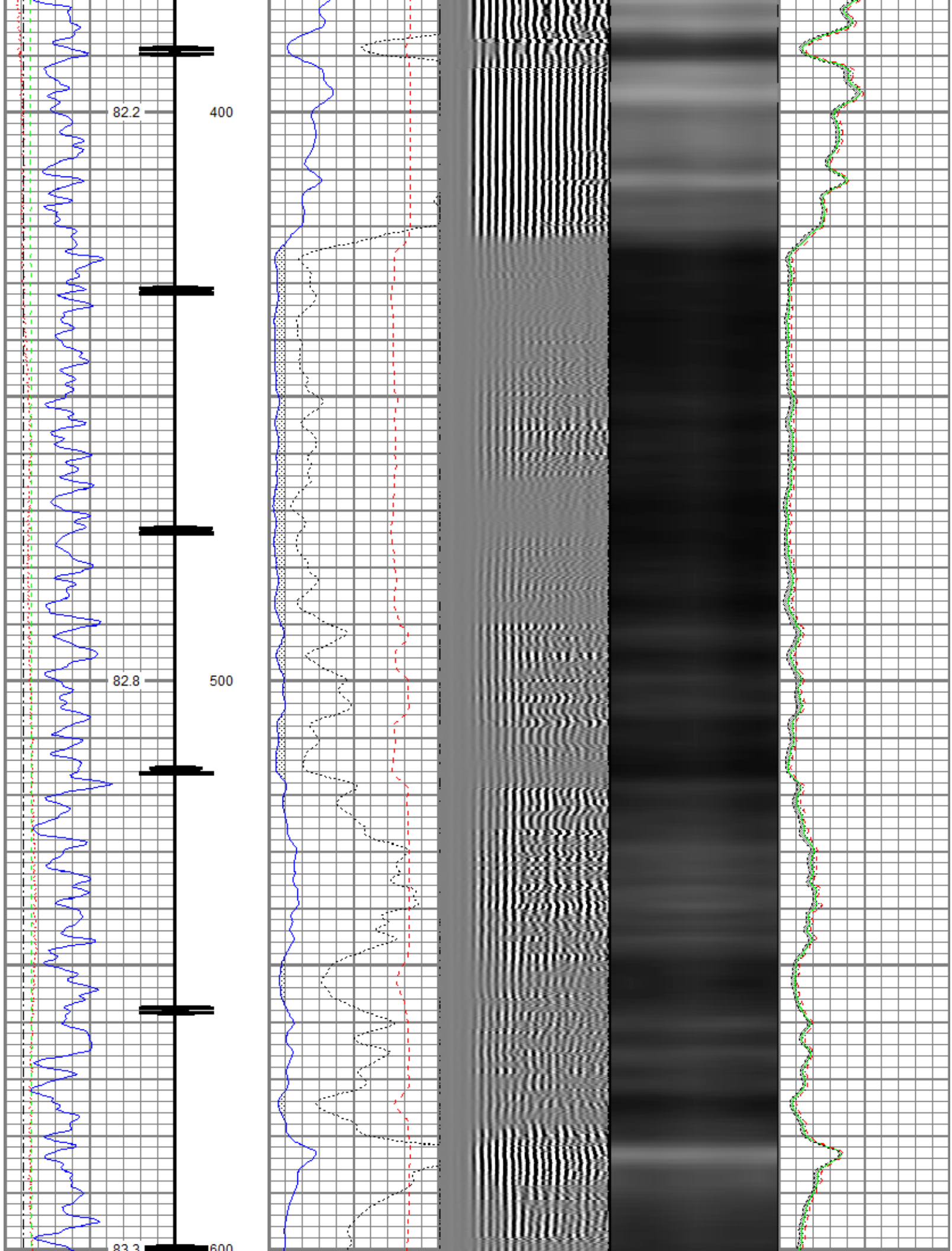


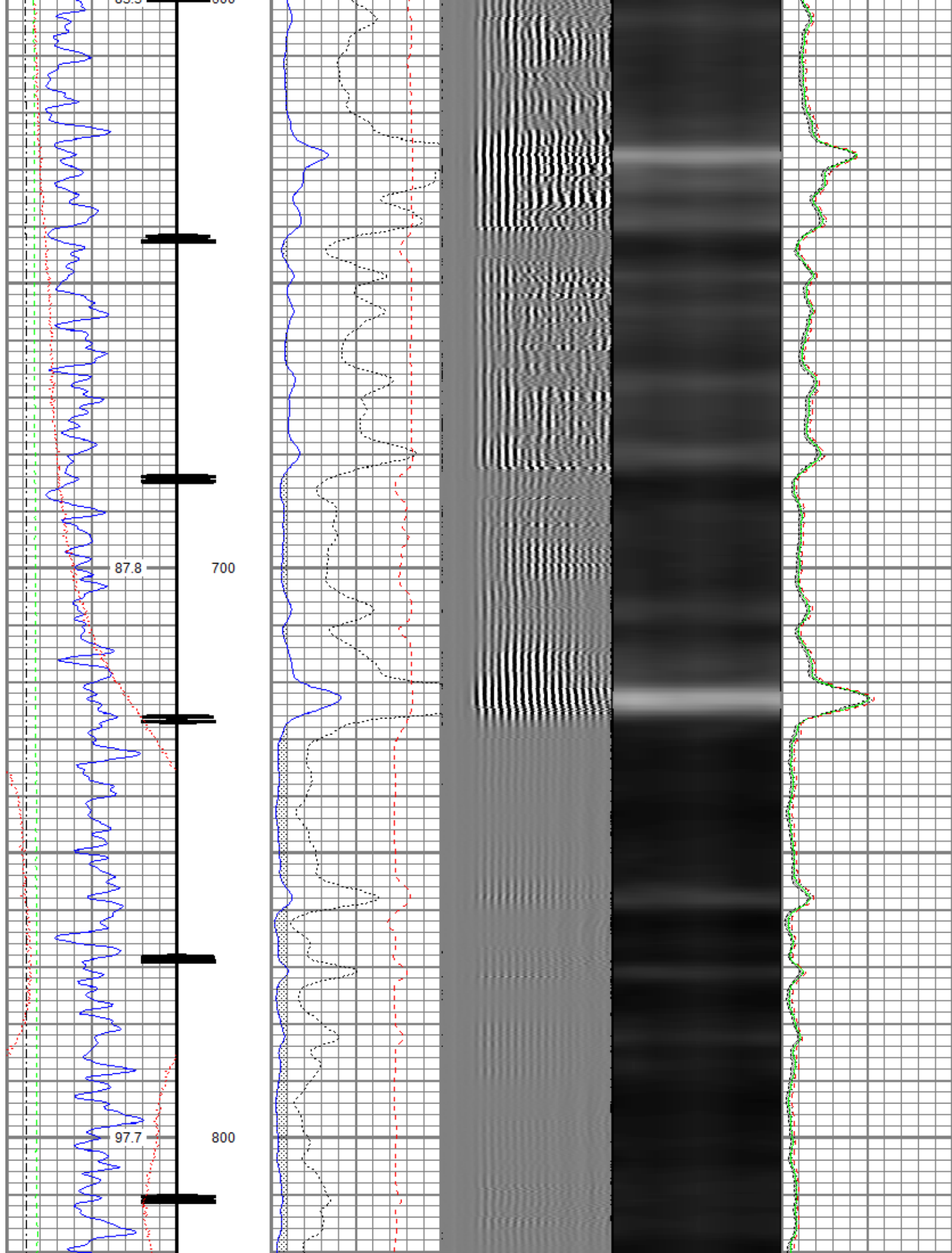
Database File:	anadarko_cannon_land_7_33.db
Dataset Pathname:	Main
Presentation Format:	radii
Dataset Creation:	Thu Sep 03 08:01:44 2015 by Log 7.0 B1
Charted by:	Depth in Feet scaled 1:240

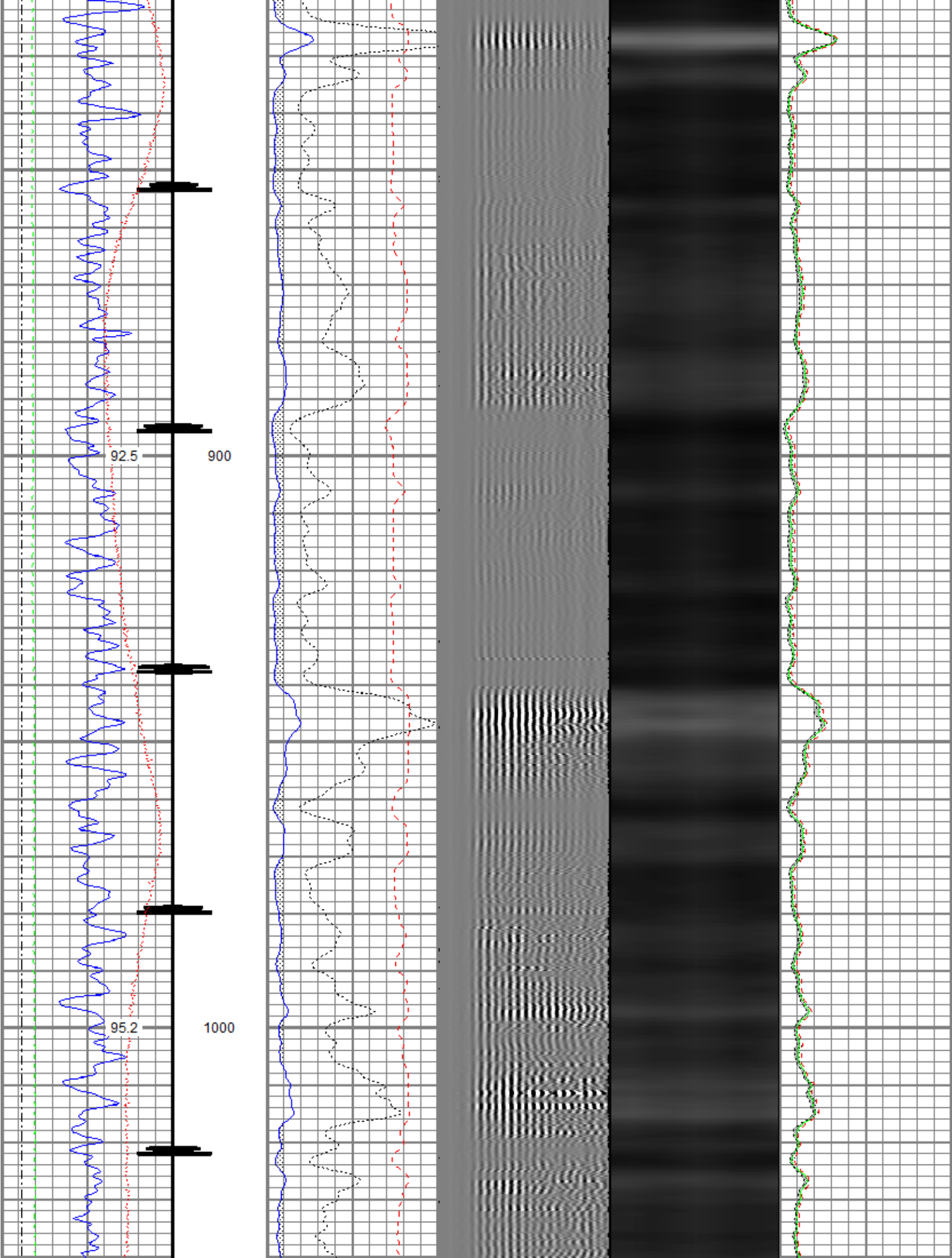
Gamma Ray	0	3' Amplitude (mV) 100	5' Variable Density Log	Sector Map	0	Average Amplitude 100
(GAPI) 120		3' Amplitude x 5	200			Minimum Amplitude
Casing Collar Locator		0 (mV) 20			0	100
0 Temperature (degF) 20		3' Travel Time				Maximum Amplitude
Line Speed		650 (usec) 150			0	100
-150 (ft/min) 150						
0 Line Tension (lb) 2000						

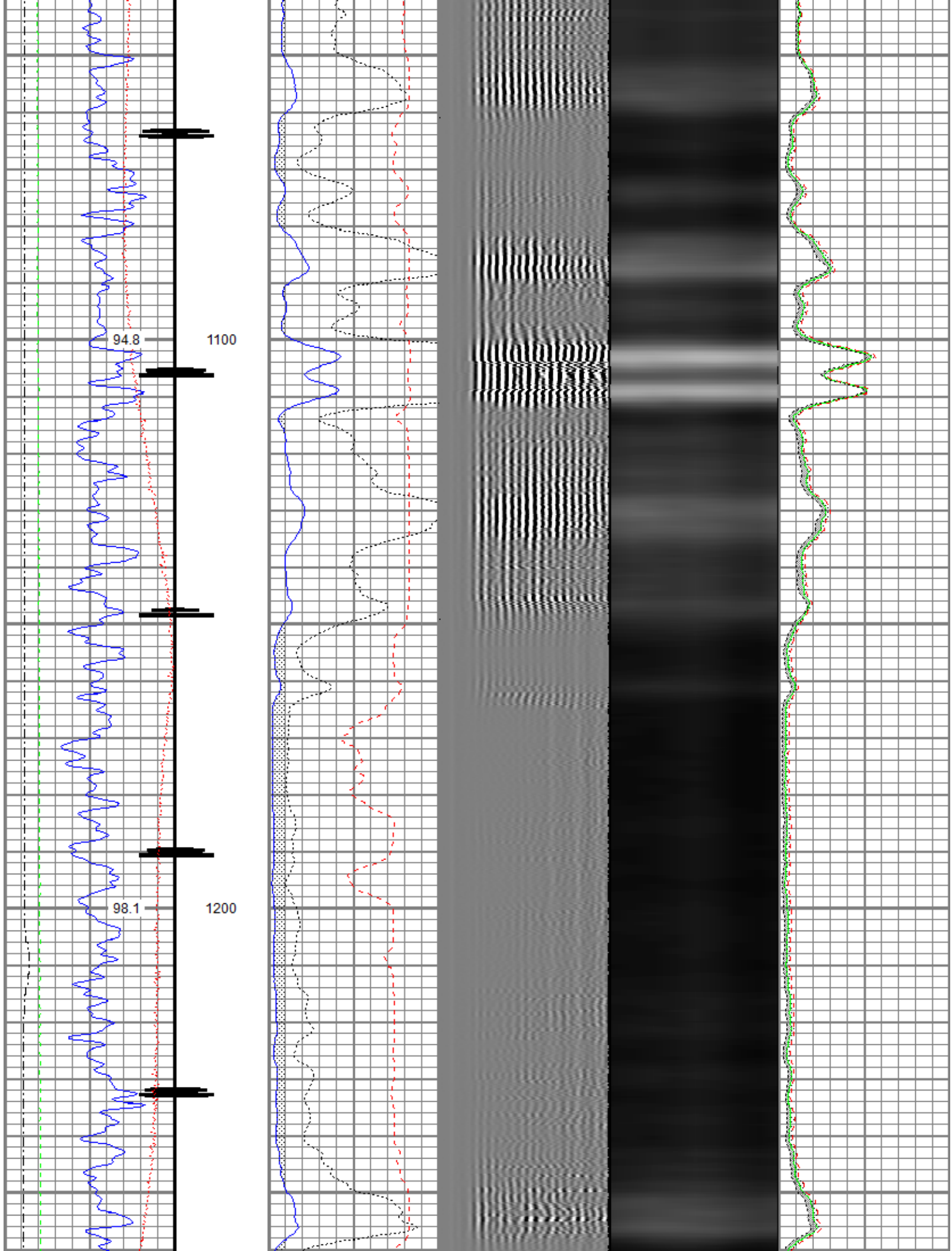


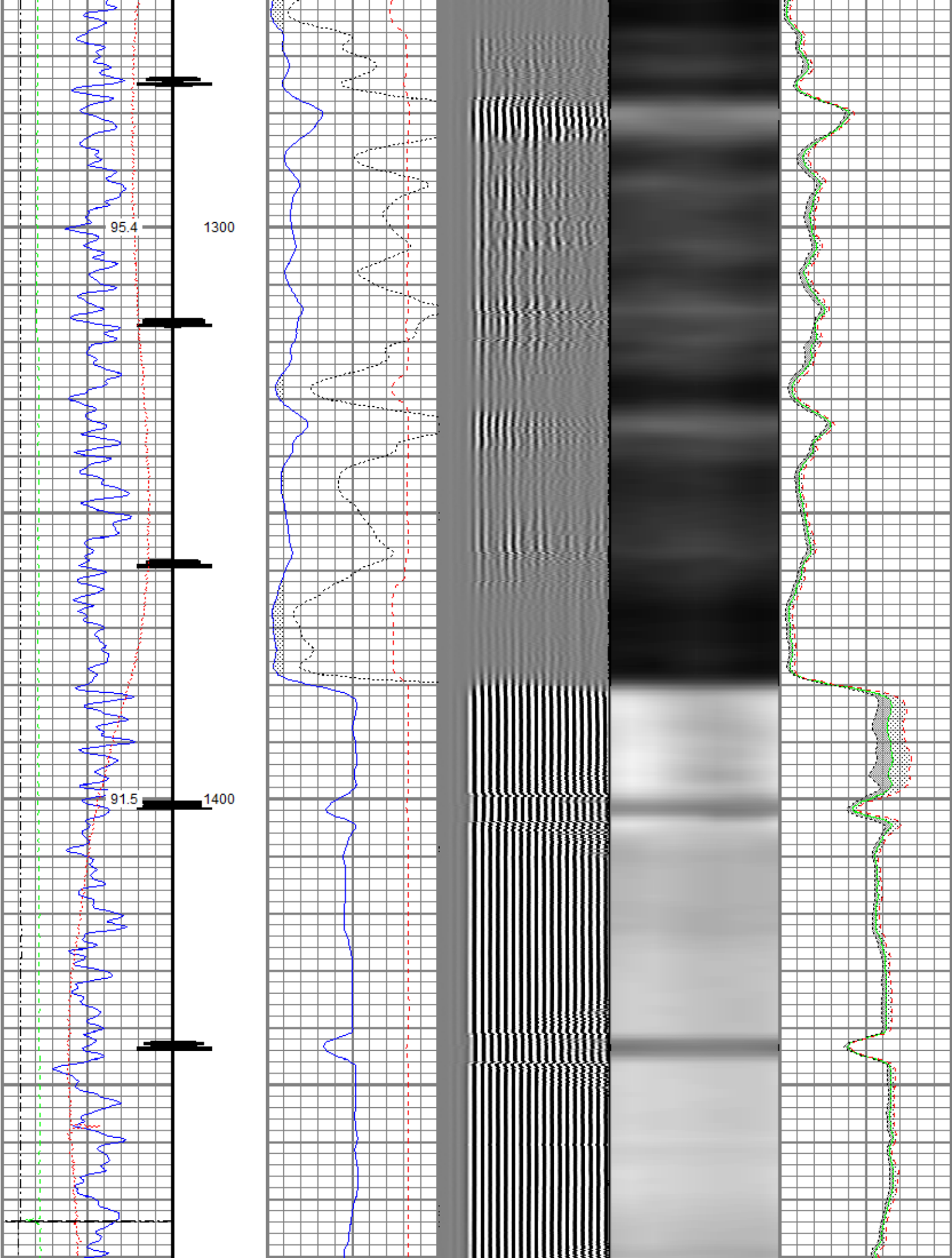


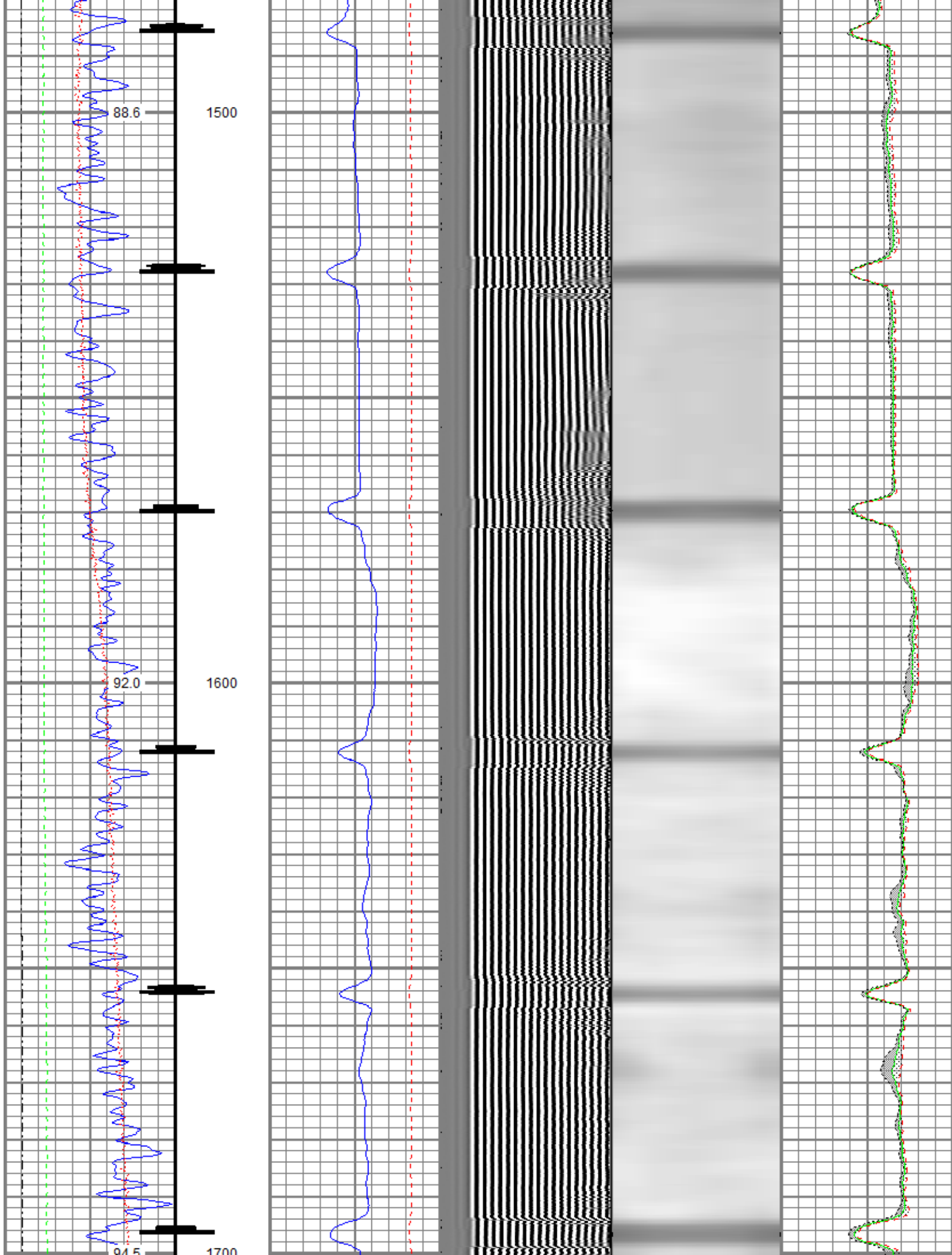


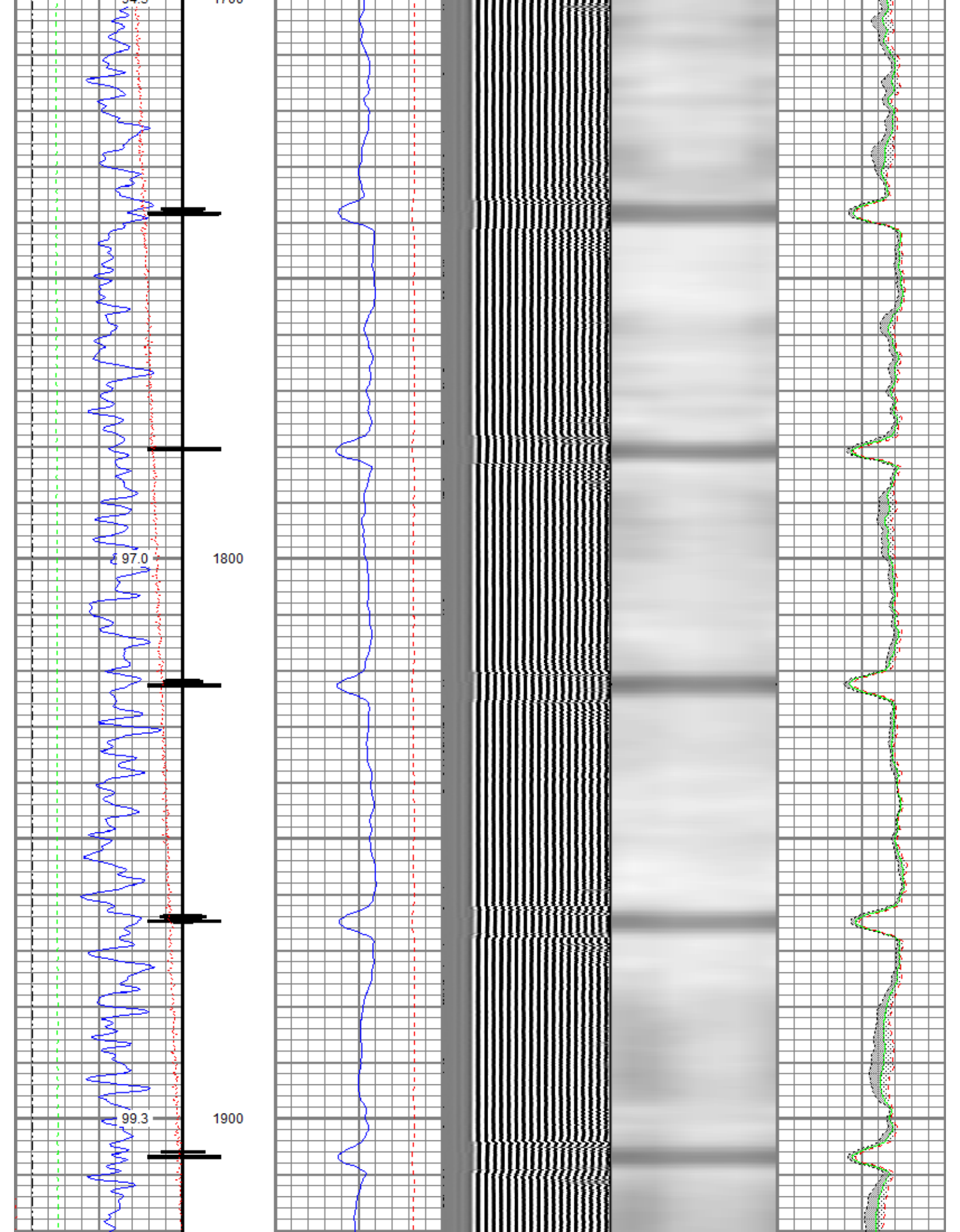


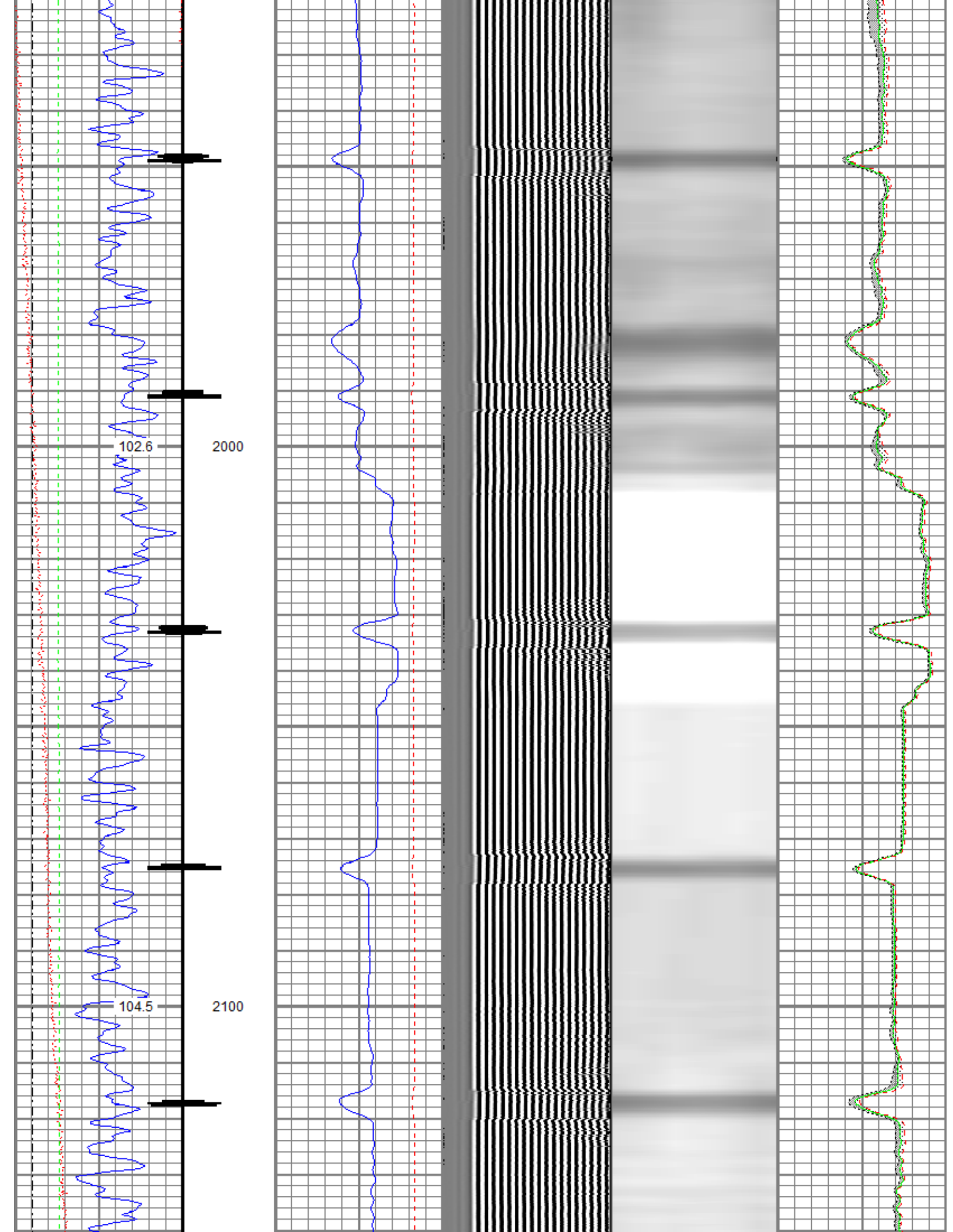


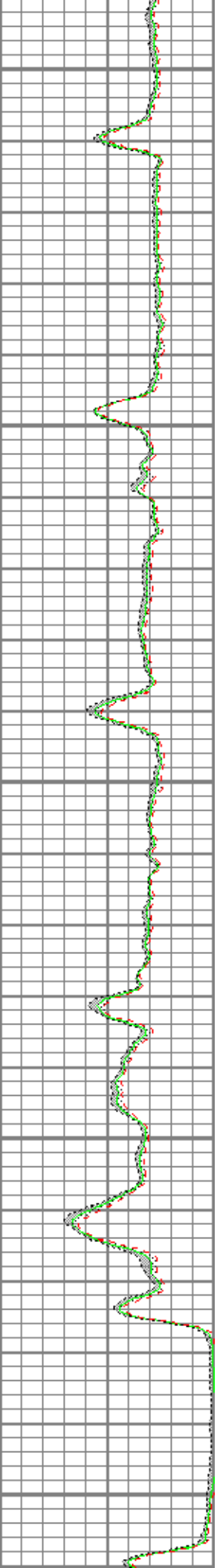
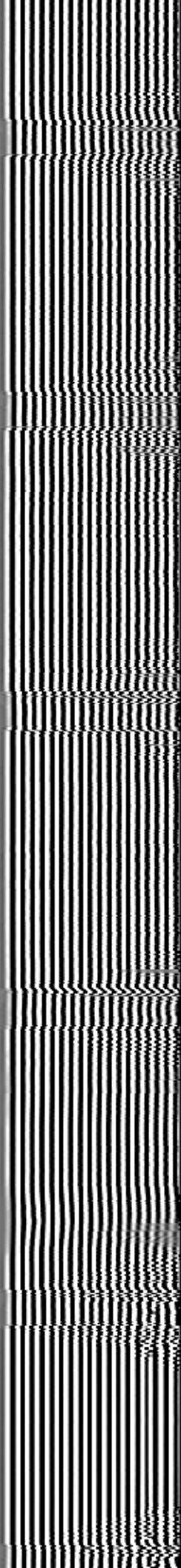
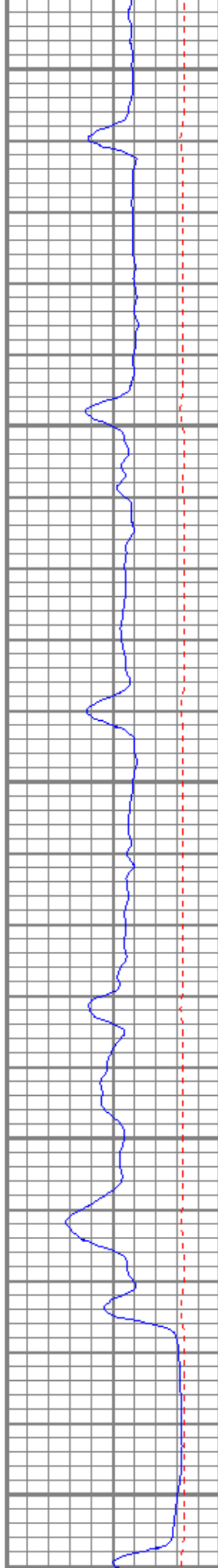
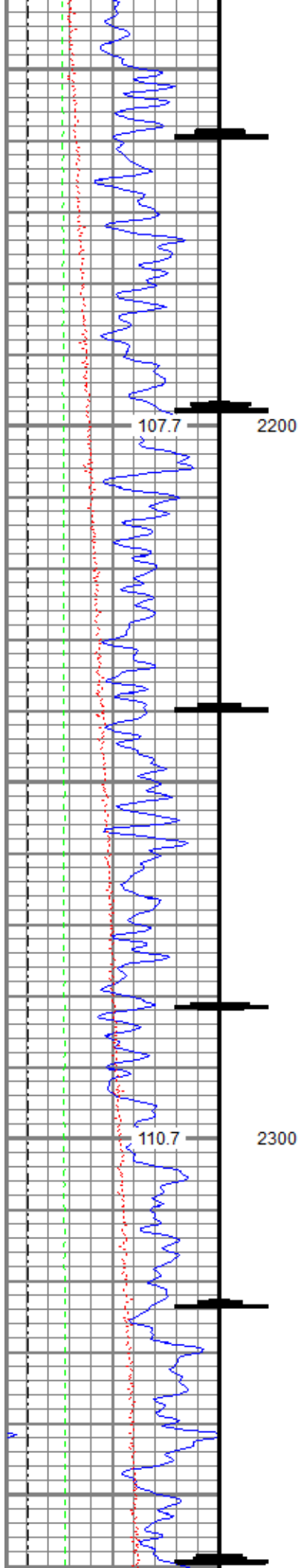


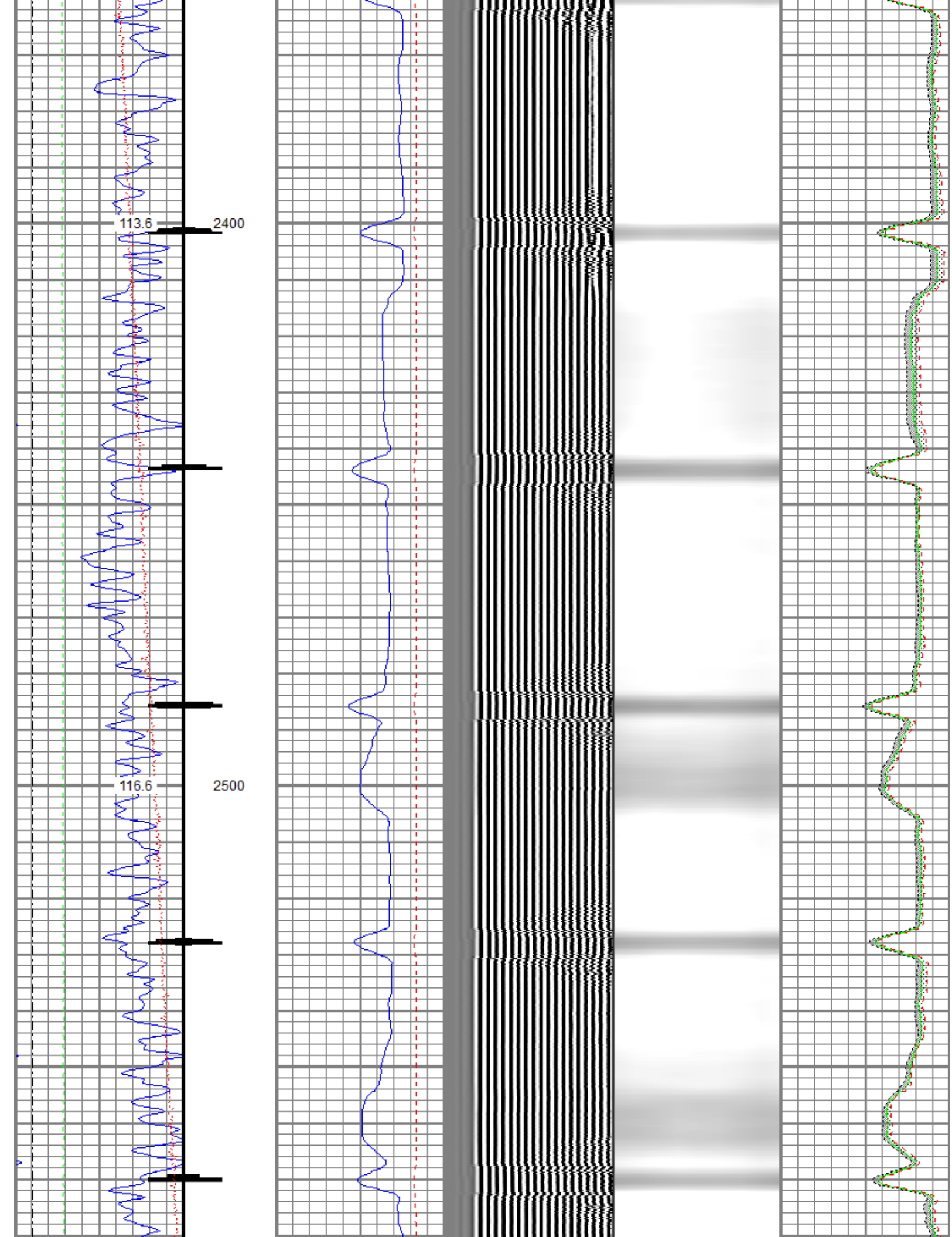


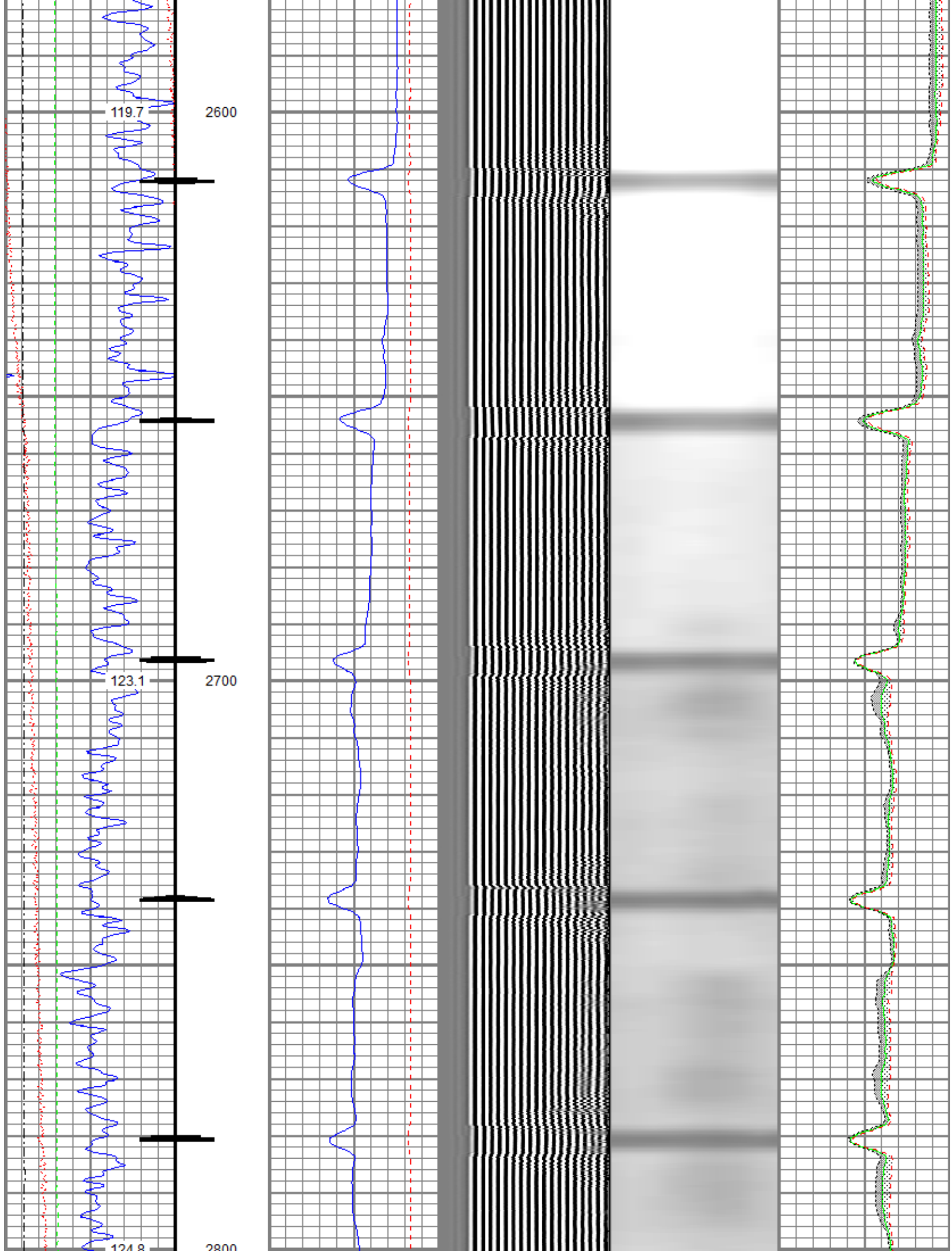


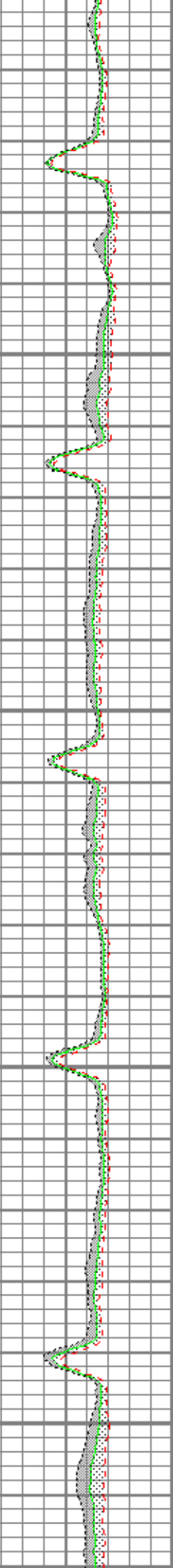
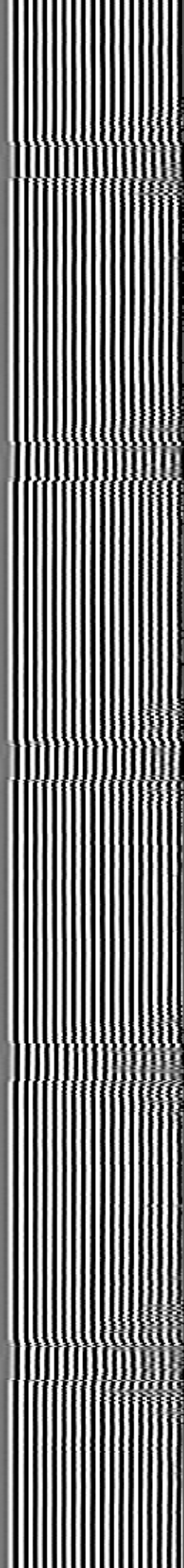
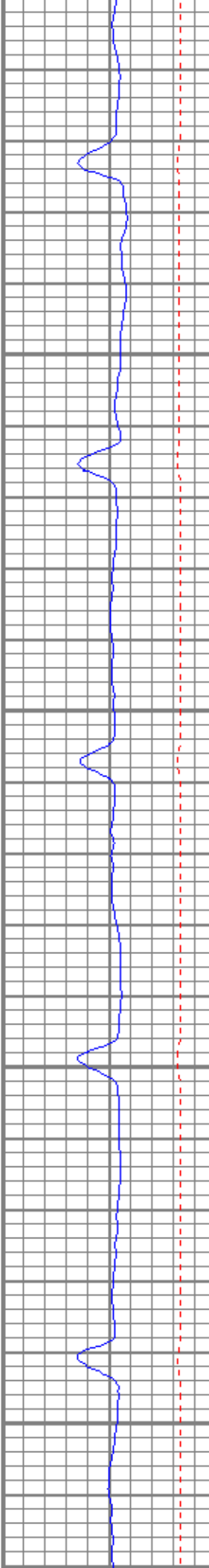
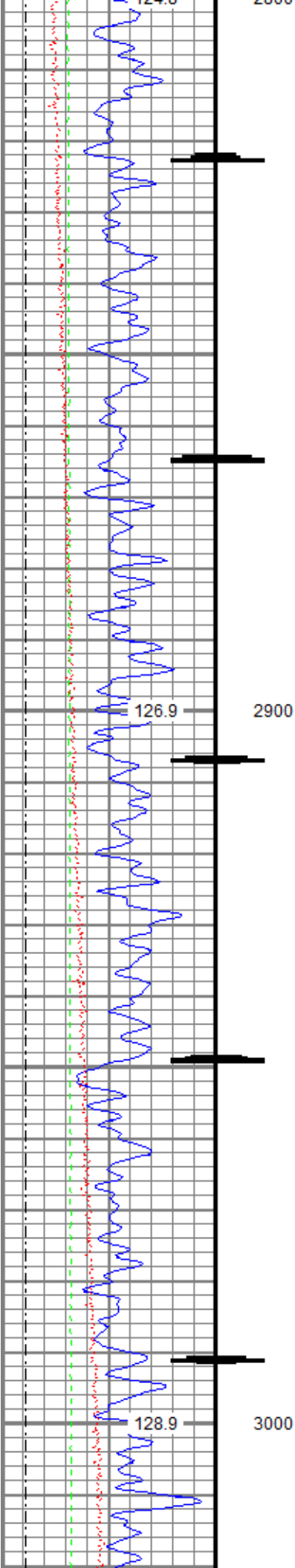


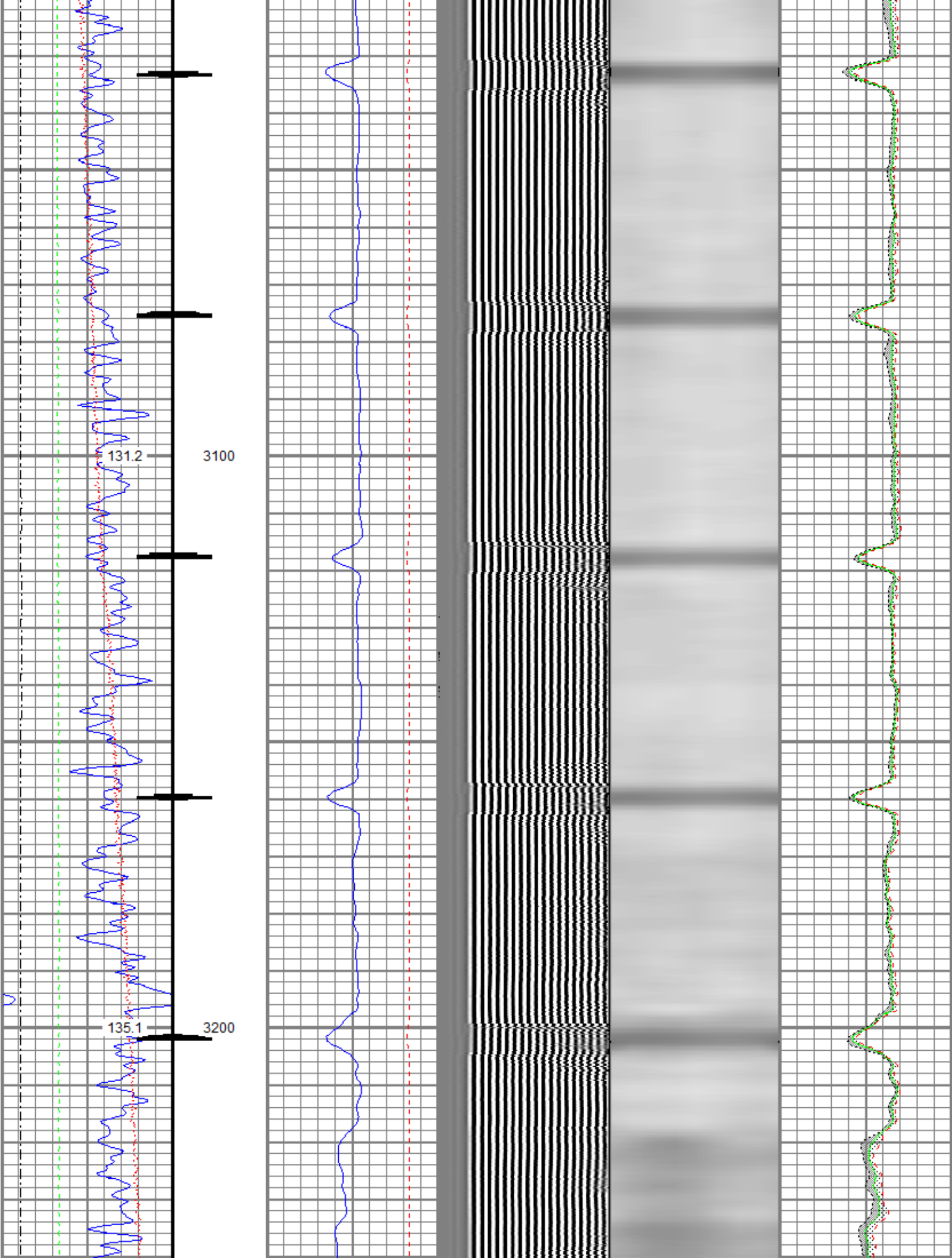


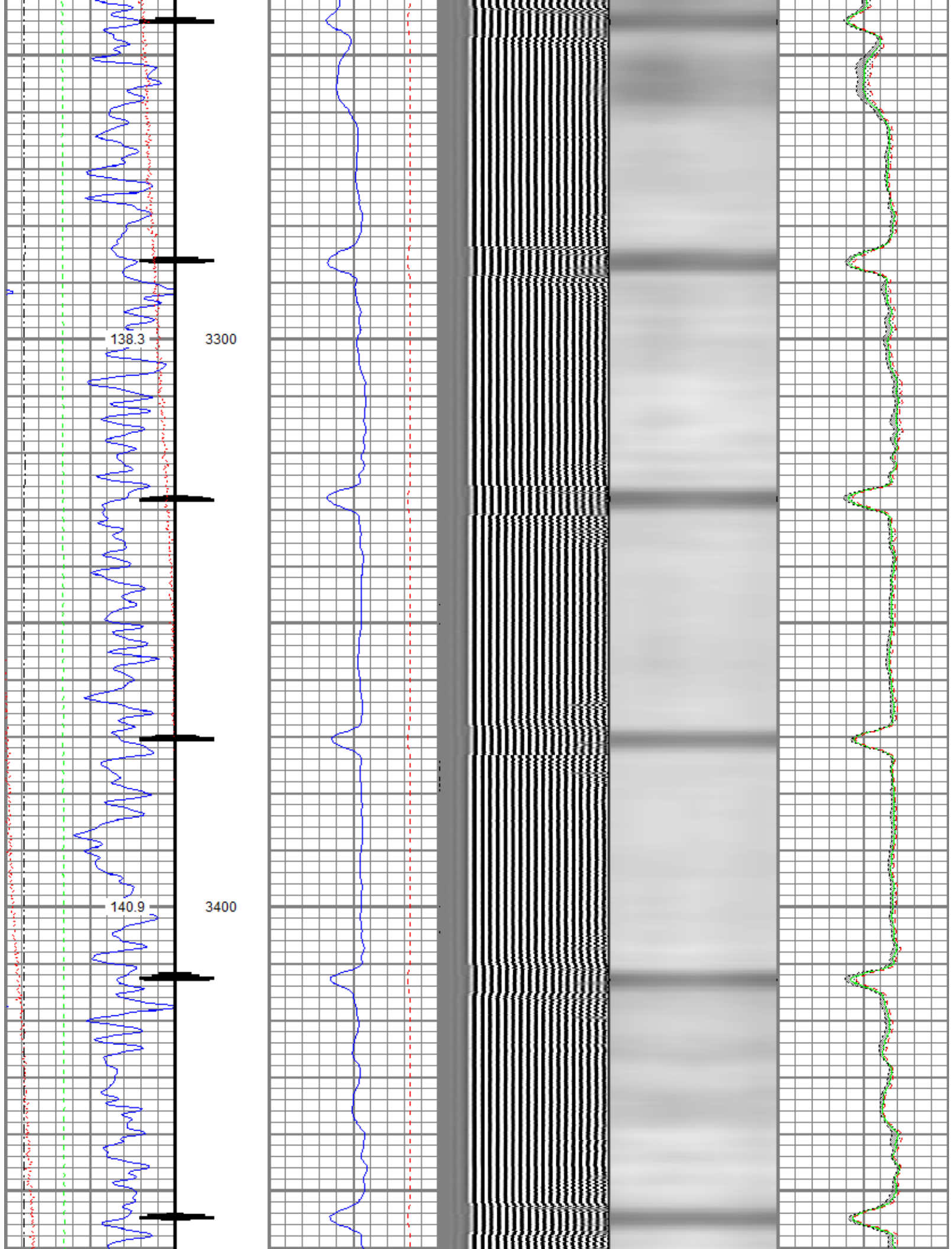


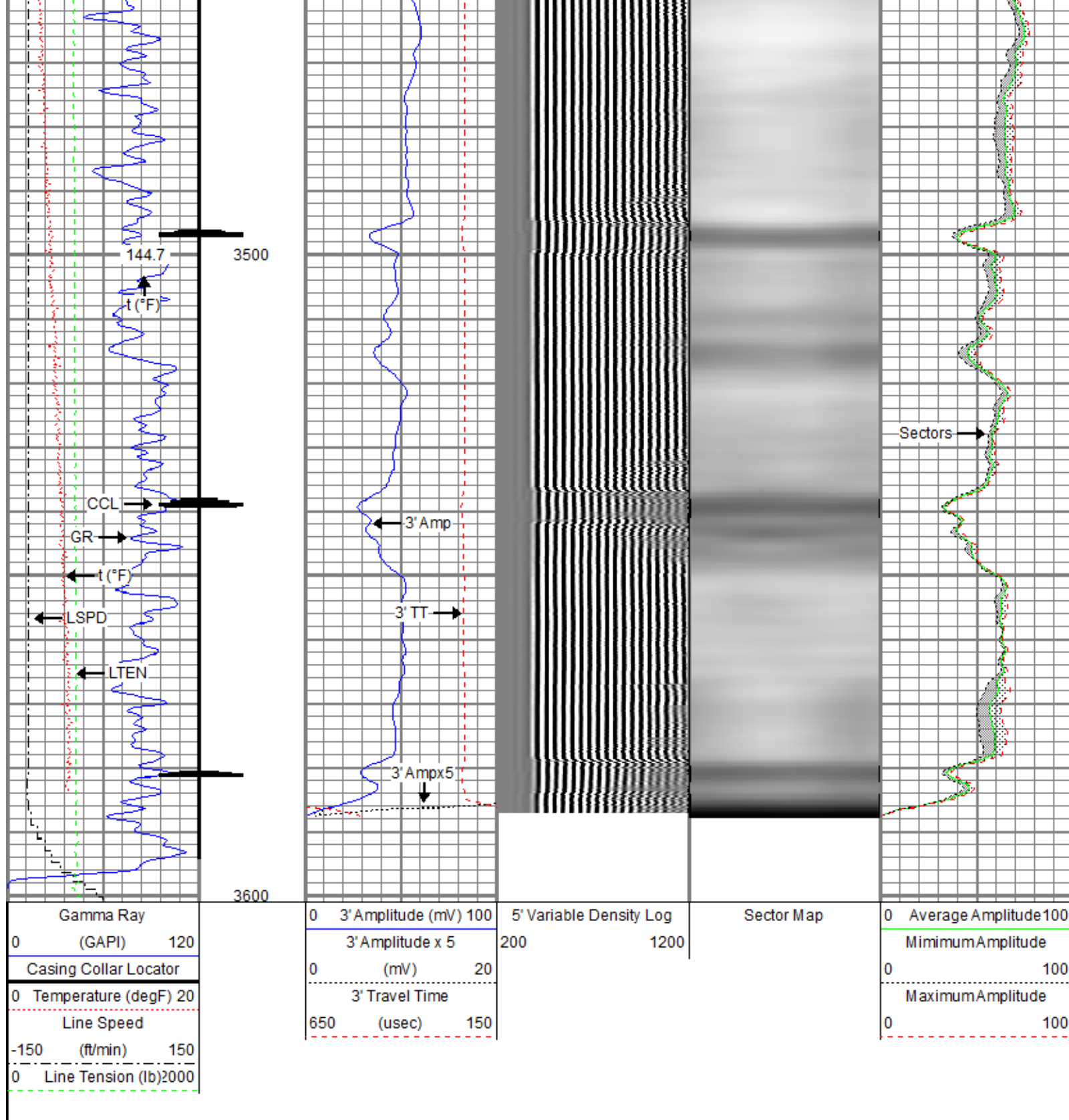










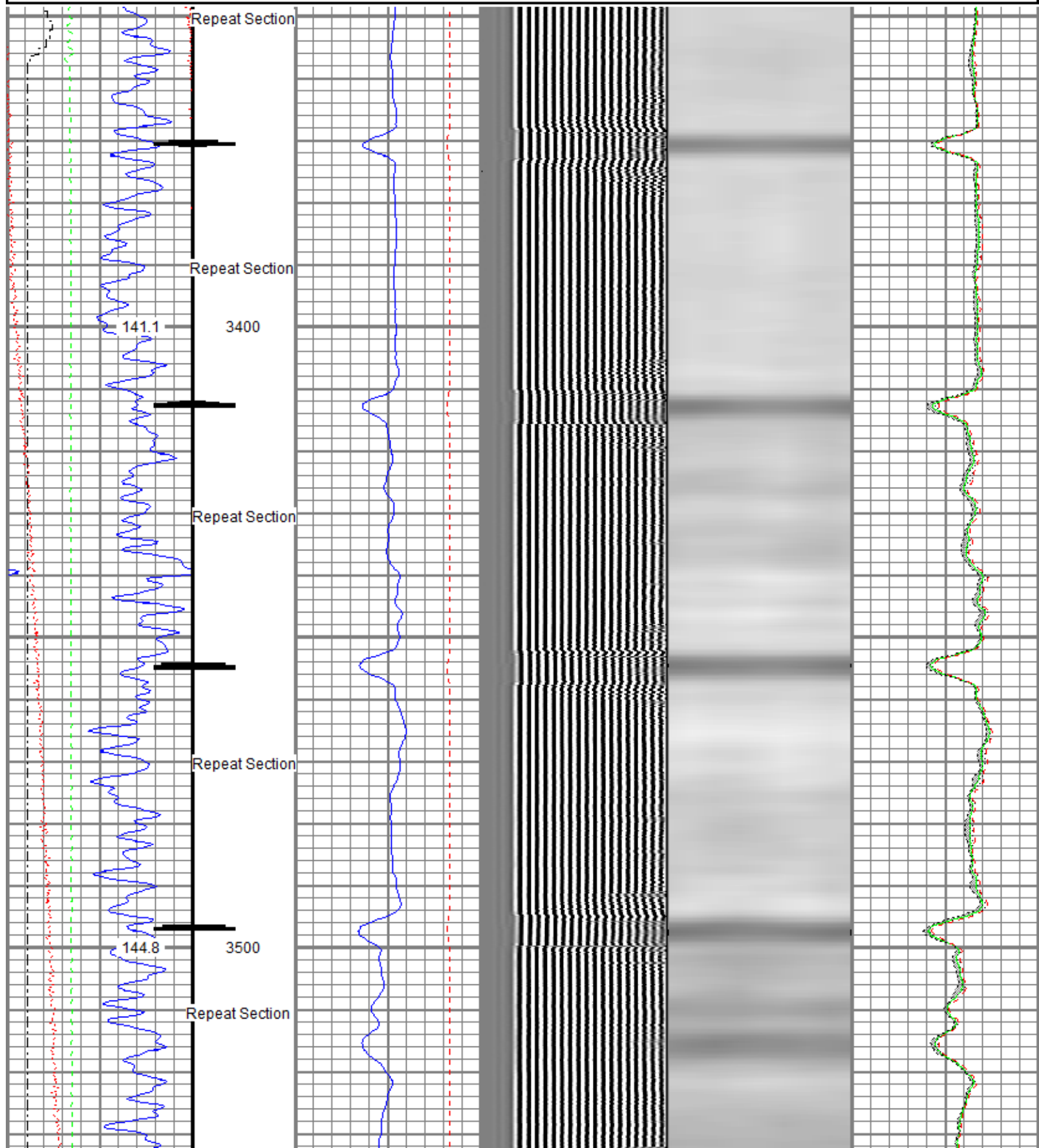


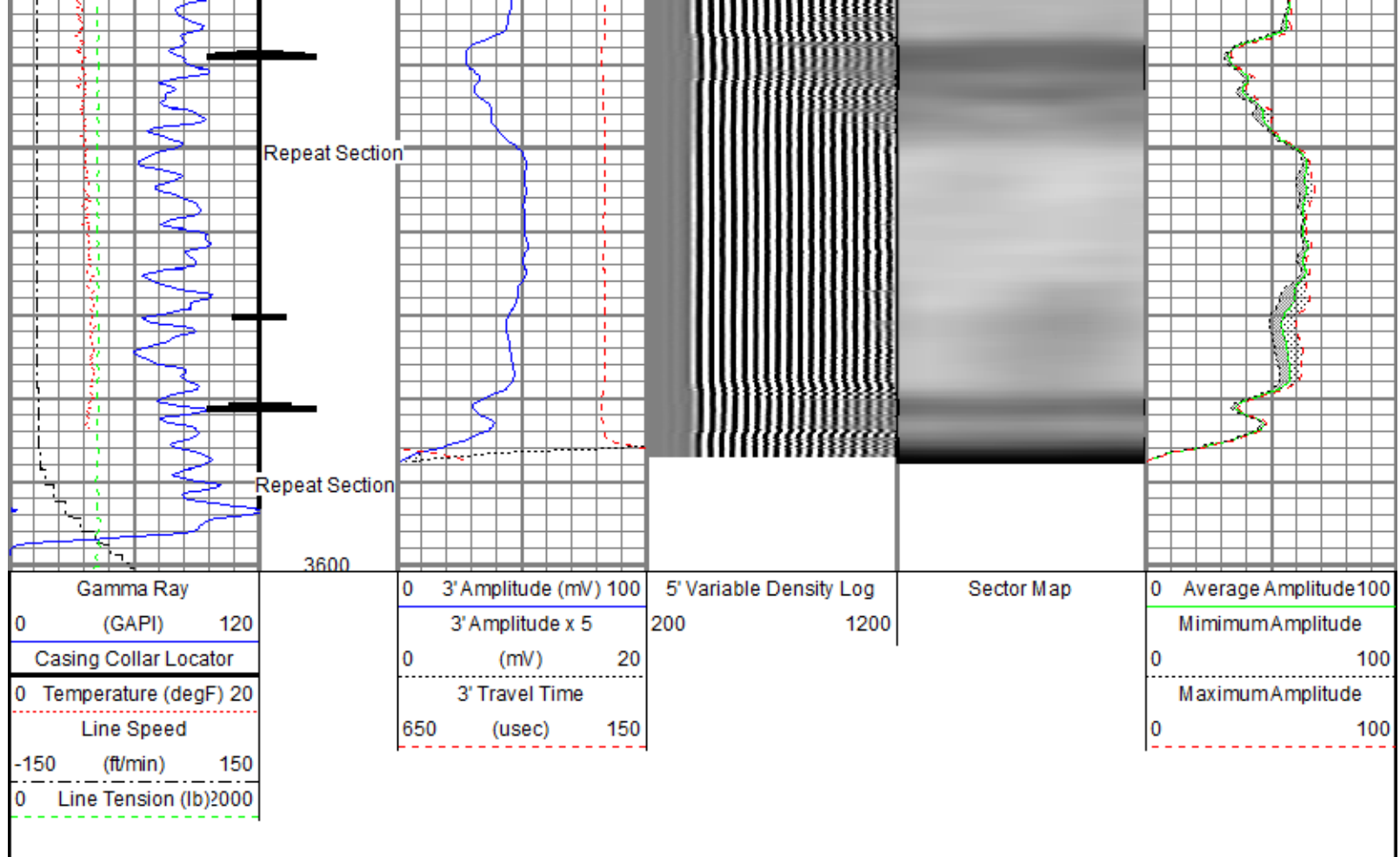
Repeat Section



Recorded With 0 PSI Surface Induced Pressure.

Database File: anadarko_cannon_land_7_33.db
 Dataset Pathname: repeat1
 Presentation Format: radii
 Dataset Creation: Thu Sep 03 07:57:35 2015 by Log 7.0 B1
 Charted by: Depth in Feet scaled 1:240

Gamma Ray		0	3' Amplitude (mV)	100	5' Variable Density Log		Sector Map	0	Average Amplitude	100
0	(GAPI)	120	3' Amplitude x 5		200	1200		Minimum Amplitude		
Casing Collar Locator			0	(mV)	20			0		100
0	Temperature (degF)	20	3' Travel Time					Maximum Amplitude		
Line Speed			650	(usec)	150			0		100
-150	(ft/min)	150								
0	Line Tension (lb)	2000								





Sensor	Offset (ft)	Schematic	Description	Len (ft)	OD (in)	Wt (lb)
HeadVolt	19.49		T_CH14375_1_GO Titan 1-7/16" Assembled Electric Cable Head with 1" Fishing Neck	1.03	1.44	4.00
			Probe_IL_BS_Cent Probe 2-3/4" Inline Electrical Inline Bowspring Centralizer	2.88	2.75	10.00
Temp	16.72					
WVF3FT	14.55		Probe_RADII-C-2-3/4" (FW1305-098) Probe 2-3/4" Sector Cement Bond Tool with Temperature Probe	9.19	2.75	105.00
WVFCAL	14.55					
WVFS1	14.55					
WVFS2	14.55					
WVFS3	14.55					
WVFS4	14.55					
WVFS5	14.55					
WVFS6	14.55					
WVFS7	14.55					

WVFS7 WVFS8 WVF5FT	14.55 14.55 13.55					
CCL DCCL	6.51 6.51					
GR	3.77					
				Probe_IL_BS_Cent Probe 2-3/4" Inline Electrical Inline Bowspring Centralizer	2.88	2.75
				Probe_CCL_GR-2.75"Digital (FW1307-038) Probe 2-3/4" Digital CCL / Gamma Ray Combined	4.54	2.75
				Probe_IL_BS_Cent Probe 2-3/4" Inline Electrical Inline Bowspring Centralizer	2.88	2.75
				Dataset: Total Length: Total Weight: O.D.	anadarko_cannon_land_7_33.db: field/well/run1/Main 23.40 ft 194.00 lb 2.75 in	

5'	0.002	0.522	0.800	81.196	154.493	0.493
SUM						
S1	0.003	0.769	0.000	100.000	130.560	-0.370
S2	0.002	0.746	0.000	100.000	134.361	-0.276
S3	0.002	0.701	0.000	100.000	142.942	-0.272
S4	0.002	0.676	0.000	100.000	148.449	-0.295
S5	0.002	0.669	0.000	100.000	149.861	-0.316
S6	0.002	0.659	0.000	100.000	152.152	-0.279
S7	0.002	0.662	0.000	100.000	151.468	-0.303
S8	0.002	0.717	0.000	100.000	139.982	-0.308

Internal Reference Calibration, performed Wed Dec 31 17:00:00 1969:

	Raw (v)		Calibrated (v)		Results	
	Zero	Cal	Zero	Cal	Gain	Offset
CAL	0.000	0.000	0.002	0.716	1.000	0.000

Air Zero Calibration, performed Thu Sep 03 07:18:31 2015:

	Raw (v)		Calibrated (v)		Results
	Zero		Zero		Offset
3'	0.000		0.000		0.000
5'	0.000		0.000		0.000
SUM					
S1	0.000		0.000		0.000
S2	0.000		0.000		0.000
S3	0.000		0.000		0.000
S4	0.000		0.000		0.000
S5	0.000		0.000		0.000
S6	0.000		0.000		0.000
S7	0.000		0.000		0.000
S8	0.000		0.000		0.000



Company Kerr-McGee Oil & Gas Onshore, L.P.
Well Cannon Land 7-33
Field Wattenberg
County Weld
State Colorado