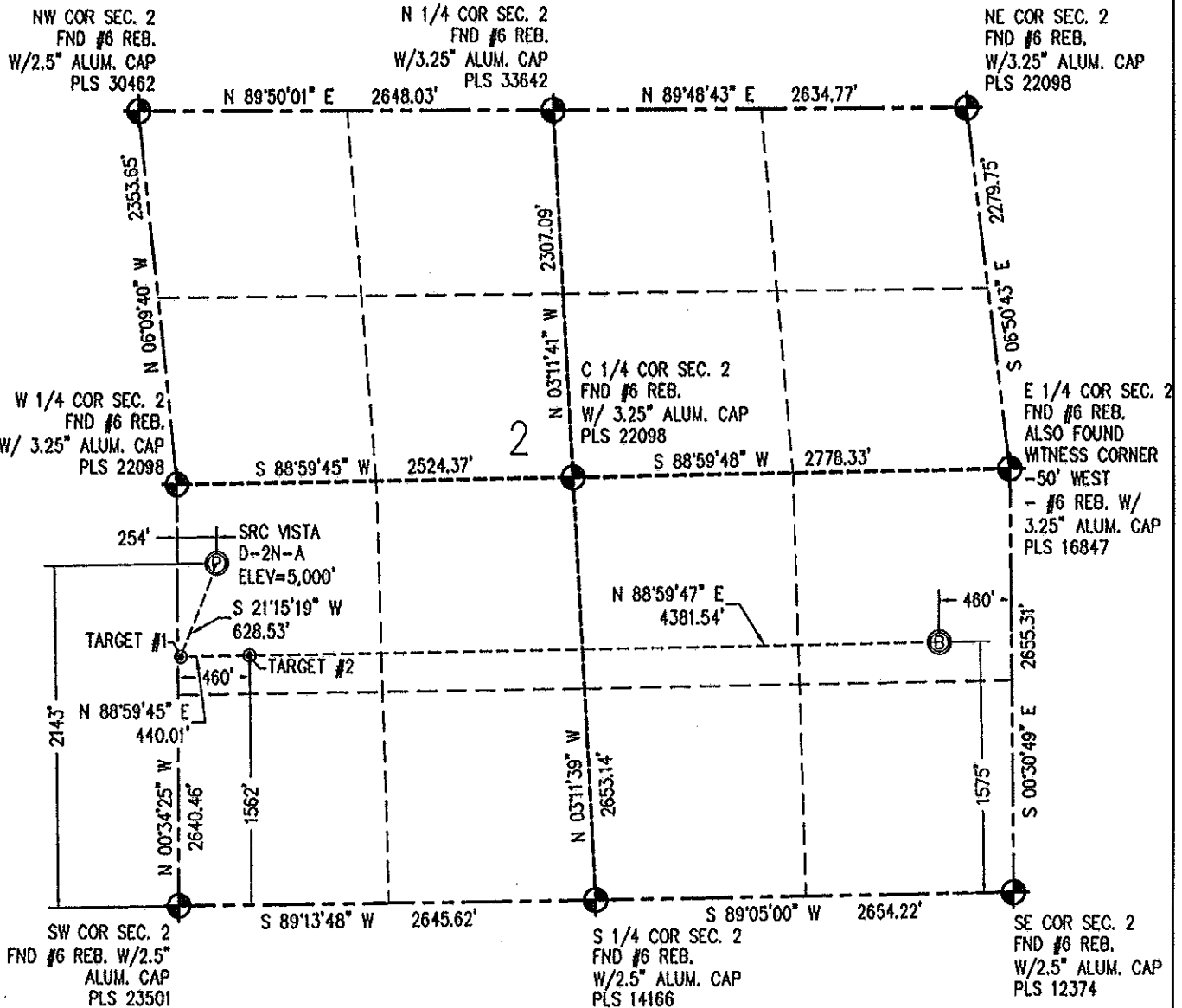


**WELL LOCATION CERTIFICATE**

THIS MAP DOES NOT REPRESENT A BOUNDARY SURVEY

SECTION 2  
TOWNSHIP 4 NORTH  
RANGE 68 WEST

N IN ACCORDANCE WITH A REQUEST FROM CRAIG RASMUSON - SYNERGY RESOURCES, BASELINE ENGINEERING CORP. HAS DETERMINED THE LOCATION OF THE SRC VISTA D-2N-A TO BE 2143' FSL AND 254' FWL, AS MEASURED AT NINETY (90) DEGREES FROM THE SECTION LINE OF SECTION 2, TOWNSHIP 4 NORTH, RANGE 68 WEST AND THE BOTTOM HOLE LOCATION TO BE 1575' FSL AND 460' FWL OF SECTION 2, TOWNSHIP 4 NORTH, RANGE 68 WEST, 6TH PRINCIPAL MERIDIAN, WELD COUNTY, COLORADO.

I HEREBY CERTIFY THAT THIS WELL LOCATION CERTIFICATE WAS PREPARED BY ME, OR UNDER MY DIRECT SUPERVISION, THAT THE FIELD WORK WAS COMPLETED ON 07/28/2014, THAT IT IS NOT A LAND SURVEY PLAT OR AN IMPROVEMENT SURVEY PLAT, AND THAT IT IS NOT TO BE RELIED UPON FOR ESTABLISHMENT OF FENCE, BUILDING, OR OTHER FUTURE IMPROVEMENT LINES.

0 1000  
Scale 1" = 1000 ft

**NOTES:**

- 1) NEAREST CULTURAL ITEMS:  
BUILDING: 1028' SW  
BUILDING UNIT: 1028' SW  
HIGH OCCUPANCY BUILDING UNIT: 5280'+  
DESIGNATED OUTSIDE ACTIVITY AREA: 5280'+  
PUBLIC ROAD: INTERSTATE 25 235' W  
ABOVE GROUND UTILITY: 205' W  
RAILROAD: 5280'+  
PROPERTY LINE: 204' W
- 2) SURFACE USE: REMEDIATED GROUND.
- 3) OPERATOR NAME: BRETT BIRCH.
- 4) THE NEAREST EXISTING WELL IS: PRATT 14-20 1133' SE.
- 5) Bearings shown are grid bearings of the Colorado State Plane Coordinate System, North Zone, North American Datum 1983/2007. The lineal dimensions as contained herein are based upon the "U.S. Survey Foot."
- 6) Ground elevations are based on an observed GPS elevation (NAVD 88 DATUM).
- 7) IMPROVEMENTS: See LOCATION DRAWING for all visible improvements within 500' of disturbed area.

**SURFACE HOLE:**  
LATITUDE: 40.341393° N  
LONGITUDE: 104.978905° W  
POOP: 0.6  
1/4, 1/4: NW1/4SW1/4  
**BOTTOM HOLE:**  
LATITUDE: 40.339942° N  
LONGITUDE: 104.962444° W

**TARGET #1:**  
LATITUDE: 40.339789° N  
LONGITUDE: 104.979734° W  
**TARGET #2:**  
LATITUDE: 40.339803° N  
LONGITUDE: 104.978156° W

**LEGEND**

- - FOUND/SET SURVEY MONUMENT PER MONUMENT RECORD EXCEPTIONS NOTED.
- - CALCULATED SURVEY MONUMENT POSITION
- (c) - CALCULATED DIMENSION

**XARON A. DEW**  
Professional Land Surveyor Registration No. 38285  
State of Colorado  
FOR AND ON BEHALF OF BASELINE ENGINEERING CORP.



PROJECT #SYN04N68W02-01