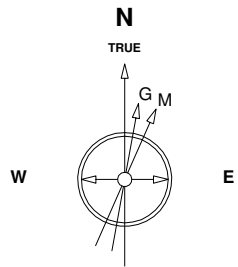


# Great Western Operating Company, LLC

**Location** Colorado  
**Field** Wattenberg  
**Installation** Schneider - South

**Slot** Slot 11 - Schneider HD 11-369HC  
**Well** Schneider HD 11-369HC  
**Wellbore** Schneider HD 11-369HC (PWB)



22-Jul-2014  
 IGRF Model [1900.0-2020.0] Dip: 66.86 deg Field: 52682.2 nT  
 Lat: N40 19 21.9792 Long: W104 49 43.4100 Elev: 4735.10 ft  
 Magnetic North is 8.55 deg East of TRUE North  
 To correct azimuth from Magnetic to TRUE add 8.55 deg

Scale 1 cm = 375 ft

East (Feet) ->

-11250 -10500 -9750 -9000 -8250 -7500 -6750 -6000 -5250 -4500 -3750 -3000 -2250 -1500 -750 0 750 1500

2000

1500

1000

500

0

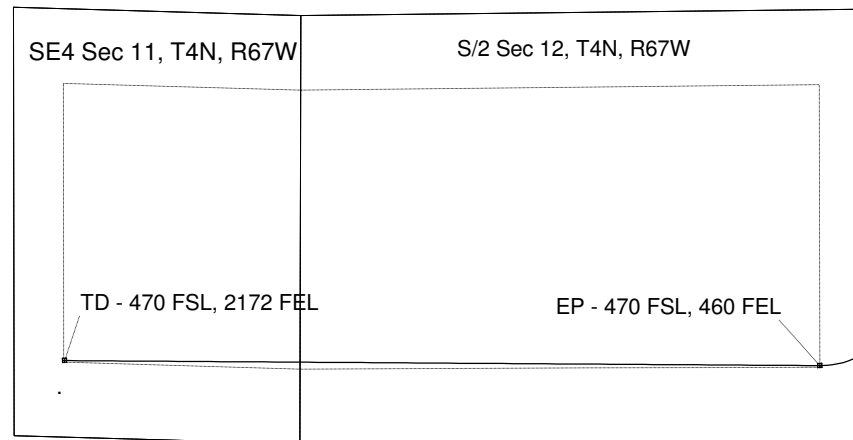
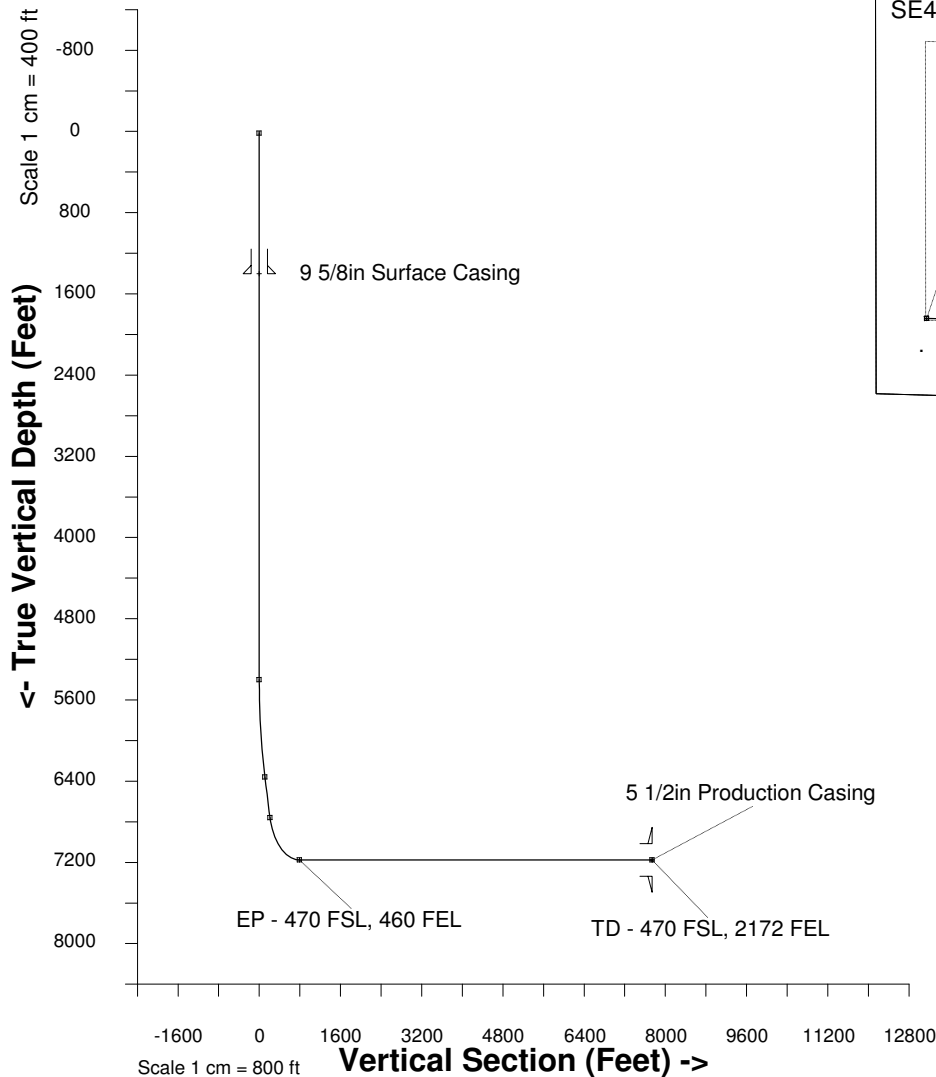
-500

-1000

-1500

<- North(Feet)

Scale 1 cm = 250 ft



## WELL PROFILE DATA

Point	MD	Inc	Azi	TVD	North	East	deg/100ft	V. Sect
Tie on	16.20	0.00	0.00	16.20	S 0.00	W 0.00		-0.00
KOP	5400.00	0.00	200.60	5400.00	S 0.00	W 0.00	0.00	-0.00
End of Build	6404.65	30.14	200.60	6358.95	S 241.69	W 90.85	9.84	110.90
End of Hold	6867.97	30.14	200.60	6759.64	S 459.45	W 172.71	0.00	210.83
Target EP - 4...60 FEL	7667.42	90.00	270.25	7175.00	S 683.08	W 737.85	32.81	792.82
T.D. & Target TD ...FEL	14640.10	90.00	270.25	7175.00	S 652.38	W 7710.47	0.00	7738.02

Created by admin  
 Date plotted 22-Sep-2015  
 Plot reference is Schneider HD 11-369HC (PWB).  
 Ref wellpath is Schneider HD 11-369HC (PWP#1).  
 Coordinates are in Feet reference Slot 11 - Schneider HD 11-369HC.  
 True Vertical Depths are reference Rig Datum.  
 Measured Depths are reference Rig Datum.  
 Rig Datum: Planned Datum #1  
 Rig Datum to Mean Sea Level: 4751.30 ft.  
 Plot North is aligned to TRUE North.  
 Ellipse dimensions are of PROJECTED error ellipsoid  
 Ellipsoids are scaled to 99.48% (1D) confidence