

1801 Broadway  
Suite 500  
Denver, Colorado 80202



Allison Linz  
Regulatory Technician  
Tel: 303.398.0355  
E-mail: alinz@gwogco.com

September 3, 2015

Colorado Oil and Gas Conservation Commission  
1120 Lincoln Street, Suite 801  
Denver, Colorado 80203

RE: **Proposed Wellbore Spacing Unit**  
Schneider HD 11-369HC

Codell New Drill  
Township 4 North, Range 66 West, 6<sup>th</sup> P.M.  
SWSW Section 7  
Weld County, Colorado

Dear Director:

Great Western Operating Company, LLC is planning to drill the above captioned well in accordance with the provisions of COGCC Rule 318A.e.

Great Western proposed wellbore spacing unit consists of:

- **SE/4 Section 11, S/2 Section 12**
- **480 Acres**

The 30 day notification time period has passed and we have not received any objections to such well locations or proposed spacing unit, therefore Great Western hereby requests the Director to approve the above mentioned well. Great Western Operating Company, LLC respectfully requests that the COGCC review the enclosed map illustrating the proposed wellbore spacing unit.

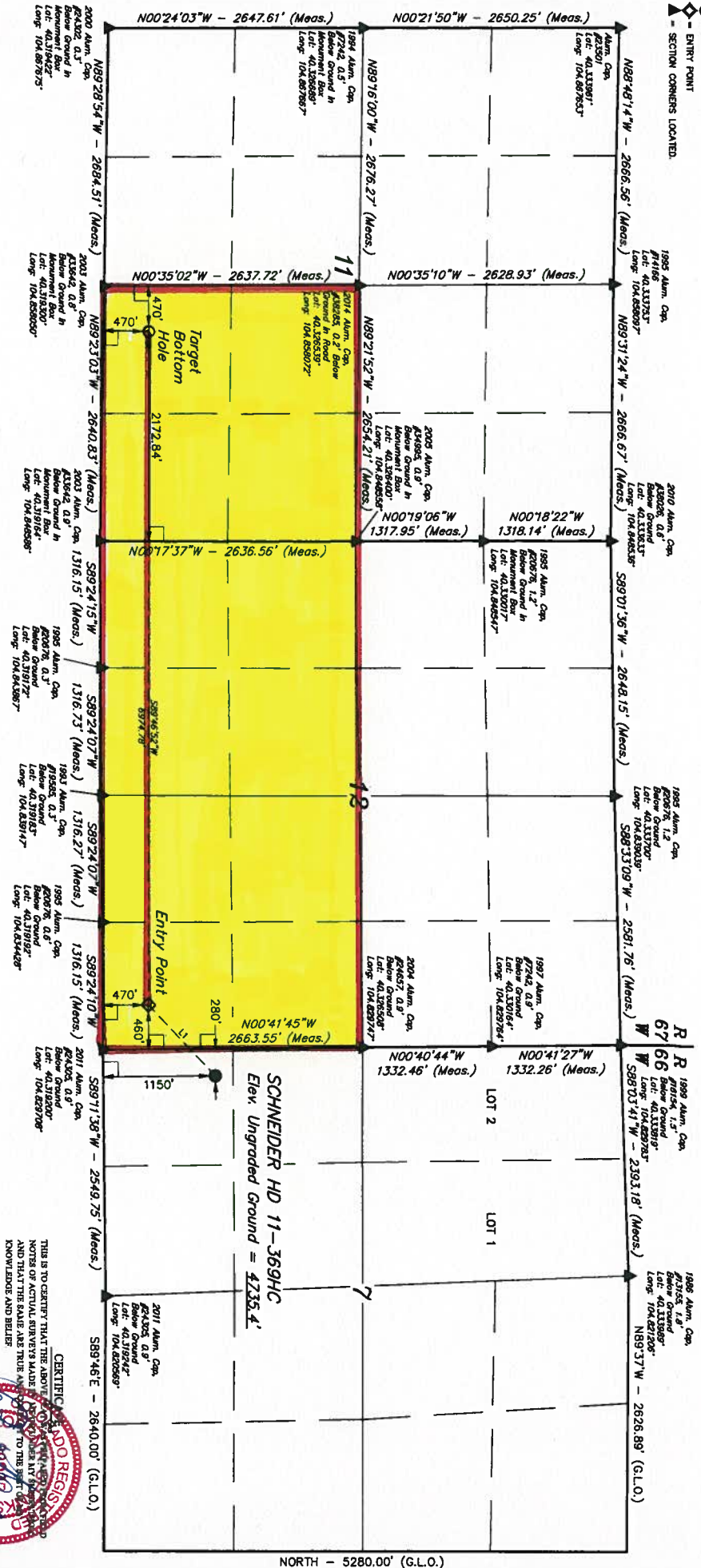
Respectfully,

*Allison Linz*

Allison Linz  
Regulatory Technician  
Great Western Operating Company, LLC

- 90° SYMBOL.  
 ● — PROPOSED WELLHEAD.  
 ○ — TARGET BOTTOM HOLE.  
 ◆ — ENTRY POINT  
 ▲ — SECTION CORNERS LOCATED.

T4N, R66W, 6th P.M.



NORTH - 5280.00' (G.L.O.)

LINE TABLE		
LINE	DIRECTION	LENGTH
L1	S46°43'39"W	1004.95'

**CERTIFICATE OF REGISTRATION**  
THIS IS TO CERTIFY THAT THE ABOVE SIGNED AND SIGNED NOTES OF ACTUAL RUNNERS MADE BY ME DO NOT CONTAIN ANY INFORMATION THAT AND THAT THE SAME ARE TRUE AND CORRECT TO THE BEST OF MY KNOWLEDGE AND BELIEF.

RECEIVED LAND SURVEYOR  
REGISTRATION NO. 26285  
STATE OF CALIFORNIA  
JUL 15 2009

**GREAT WESTERN OPERATING COMPANY**

**SCHNEIDER HD 11-369HC  
SW 1/4 SW 1/4, SECTION 7, T4N, R66W, 6th P.M.  
WELD COUNTY, COLORADO**

SURVEYED BY: DALLAS NIELSEN, J.S.	DATE: 08-18-14
DRAWN BY: J.W.	DATE DRAWN: 08-05-14
SCALE: 1" = 1000'	REVISED: 09-15-15 K.B.

**WELL LOCATION PLAN**

## WELL LOCATION PLAN



**UELS, LLC**  
Corporate Office • 85 South 200 East  
Vernal, UT 84078 • (435) 789-1017