

1801 Broadway
Suite 500
Denver, Colorado 80202



Allison Linz
Regulatory Technician
Tel: 303.398.0355
E-mail: alinz@gwogco.com

September 3, 2015

Colorado Oil and Gas Conservation Commission
1120 Lincoln Street, Suite 801
Denver, Colorado 80203

RE: **Proposed Wellbore Spacing Unit**
Schneider HD 11-209HC

Codell New Drill
Township 4 North, Range 66 West, 6th P.M.
SWSW Section 7
Weld County, Colorado

Dear Director:

Great Western Operating Company, LLC is planning to drill the above captioned well in accordance with the provisions of COGCC Rule 318A.e.

Great Western proposed wellbore spacing unit consists of:

- **SE/4 Section 11, S/2 Section 12**
- **480 Acres**

The 30 day notification time period has passed and we have not received any objections to such well locations or proposed spacing unit, therefore Great Western hereby requests the Director to approve the above mentioned well. Great Western Operating Company, LLC respectfully requests that the COGCC review the enclosed map illustrating the proposed wellbore spacing unit.

Respectfully,

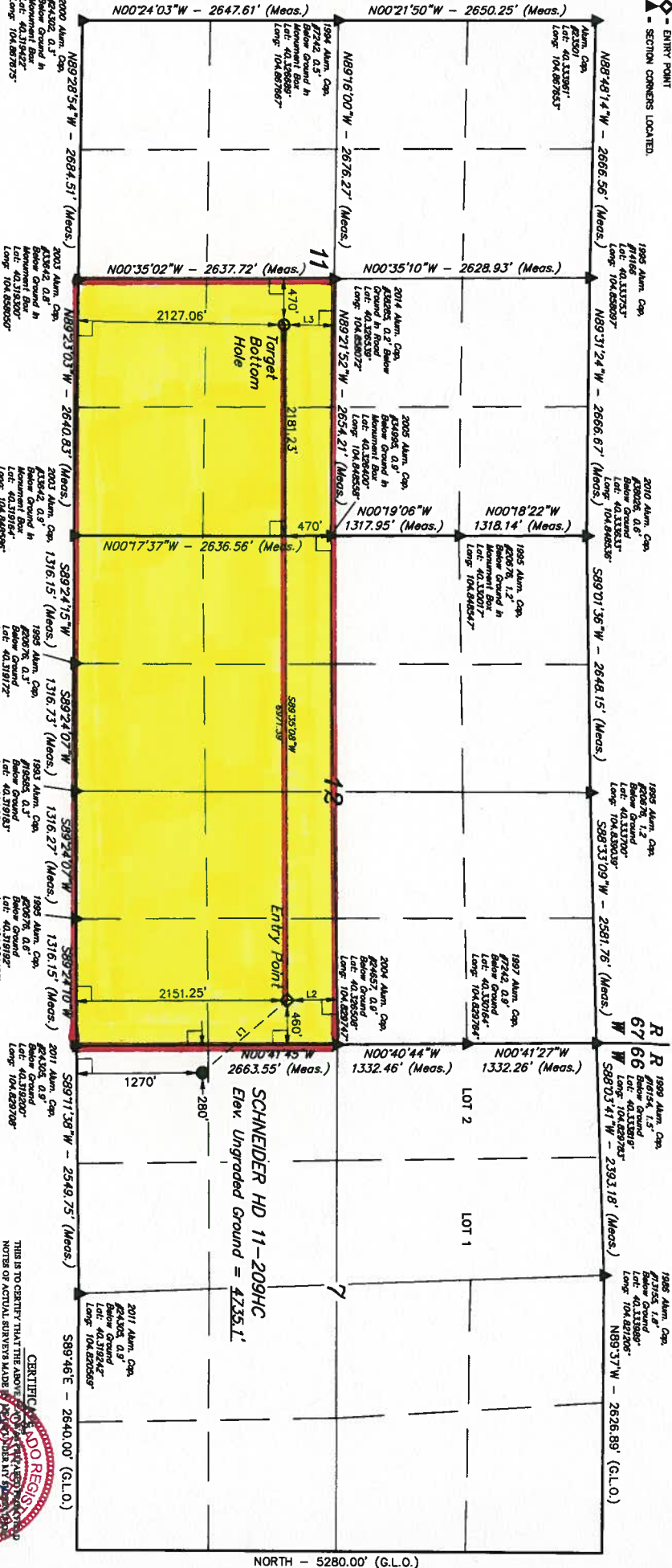
Allison Linz

Allison Linz
Regulatory Technician
Great Western Operating Company, LLC

LEGEND:

- - 9" SYMBOL
- - TARGET BOTTOM HOLE
- △ - ENTRY POINT
- ◊ - SECTION CORNERS LOCATED

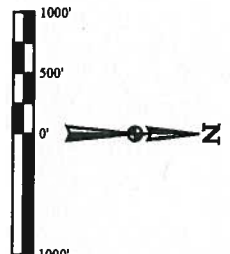
T4N, R66W, 6th P.M.



LINE TABLE	
LINE	DIRECTION LENGTH
L1	N40°43'01"W 1150.77
L2	N00°35'35"W 508.82
L3	N00°35'08"E 508.82

BASIS OF BEARINGS
BASIS OF BEARINGS IS A GPS OBSERVATION

BASIS OF ELEVATION
USGS COOPERATIVE BASE NETWORK CONTROL STATION, DESIGNATION "VERMILYEA" NGS DATA SHEET LISTS THE NAVD 88 ELEVATION AS BEING 5026 FEET.



NAD 83 TARGET BOTTOM HOLE	
LATITUDE = 40°19'34.1" (40.323114)	LATITUDE = 40°19'34.1" (40.323100)
LONGITUDE = 104°51'12.8" (104.853833)	LONGITUDE = 104°49'51.0" (104.831389)
NAD 83 ENTRY POINT	
LATITUDE = 40°19'34.1" (40.323114)	LATITUDE = 40°19'34.1" (40.323117)
LONGITUDE = 104°51'12.8" (104.853833)	LONGITUDE = 104°49'51.0" (104.831389)
NAD 83 SURFACE LOCATION	
LATITUDE = 40°19'34.1" (40.323114)	LATITUDE = 40°19'34.1" (40.323117)
LONGITUDE = 104°51'12.8" (104.853833)	LONGITUDE = 104°49'51.0" (104.831389)

GREAT WESTERN OPERATING COMPANY

SCHNEIDER HD 11-209HC
SW 1/4 SW 1/4 SECTION 7, T4N, R66W, 6th P.M.
WELD COUNTY, COLORADO

PROF - 12

SURVEYED BY: J.W. DATE: 08-18-14
DRAWN BY: J.W. DATE: 08-18-14
SCALE: 1" = 100' REVISION: 09-15-13 K.B.

WELL LOCATION PLAT

