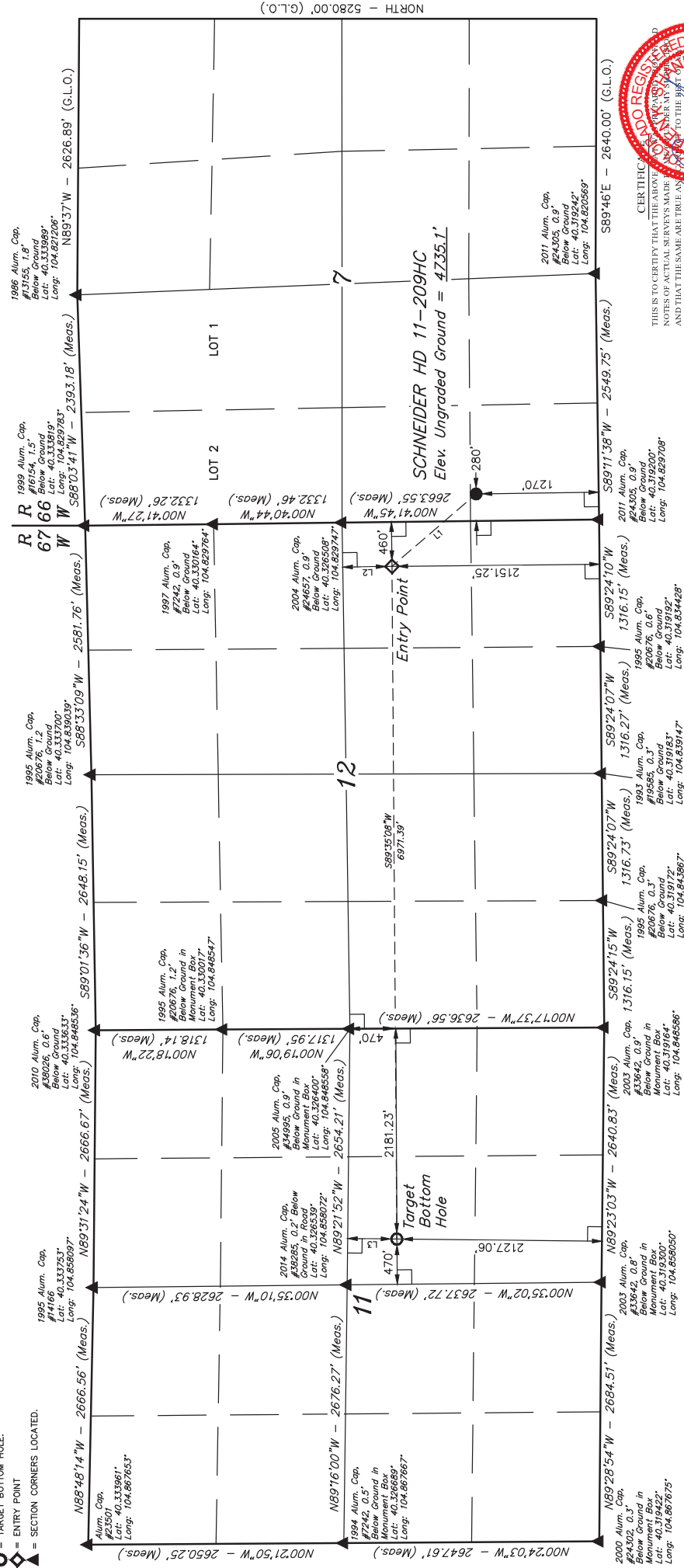


T4N, R66W, 6th P.M.

LEGEND:

- 90° SYMBOL
- PROPOSED WELLHEAD.
- TARGET BOTTOM HOLE.
- ENTRY POINT
- SECTION CORNERS LOCATED.



LINE TABLE		
LINE	DIRECTION	LENGTH
L1	N40°43'01"W	1150.77'
L2	N00°53'32"W	509.92'
L3	N00°38'06"E	509.92'



BASIS OF BEARINGS
BASIS OF ELEVATION

USGS COOPERATIVE BASE NETWORK SHEET STATION.
DESIGNATION "VERMILYEA", NGS DATA SHEET LISTS THE
NAVD 88 ELEVATION AS BEING 5026 FEET.



UELS, LLC
Corporate Office: 85 South 200 East
Vernal, UT 84078 * (435) 789-1017

GREAT WESTERN OPERATING COMPANY
SCHNEIDER HD 11-209HC
SW 1/4 SW 1/4 SECTION 7, T4N, R66W, 6th P.M.
WELD COUNTY, COLORADO
SURVEYED BY: J.W. DATE: 08-18-14
DRAWN BY: J.W. DATE DRAWN: 06-05-14
SCALE: 1" = 1000' REVISED: 09-15-15 K.B.
WELL LOCATION PLAT

PDOP = 1.2

NAD 83 (SURFACE LOCATION)	
LATITUDE	40°19'21.68" (40.322689)
LONGITUDE	104°49'45.40" (104.828722)
NAD 27 (SURFACE LOCATION)	
LATITUDE	40°19'21.75" (40.322708)
LONGITUDE	104°49'45.15" (104.828197)
NAD 83 (ENTRY POINT)	
LATITUDE	40°19'30.36" (40.325100)
LONGITUDE	104°49'53.00" (104.831389)
NAD 27 (ENTRY POINT)	
LATITUDE	40°19'30.42" (40.325117)
LONGITUDE	104°49'51.10" (104.830861)
NAD 83 (TARGET BOTTOM HOLE)	
LATITUDE	40°19'30.41" (40.325114)
LONGITUDE	104°51'22.98" (104.856383)
NAD 27 (TARGET BOTTOM HOLE)	
LATITUDE	40°19'30.47" (40.325131)
LONGITUDE	104°51'21.08" (104.855856)