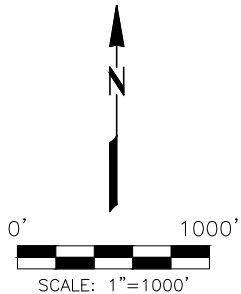
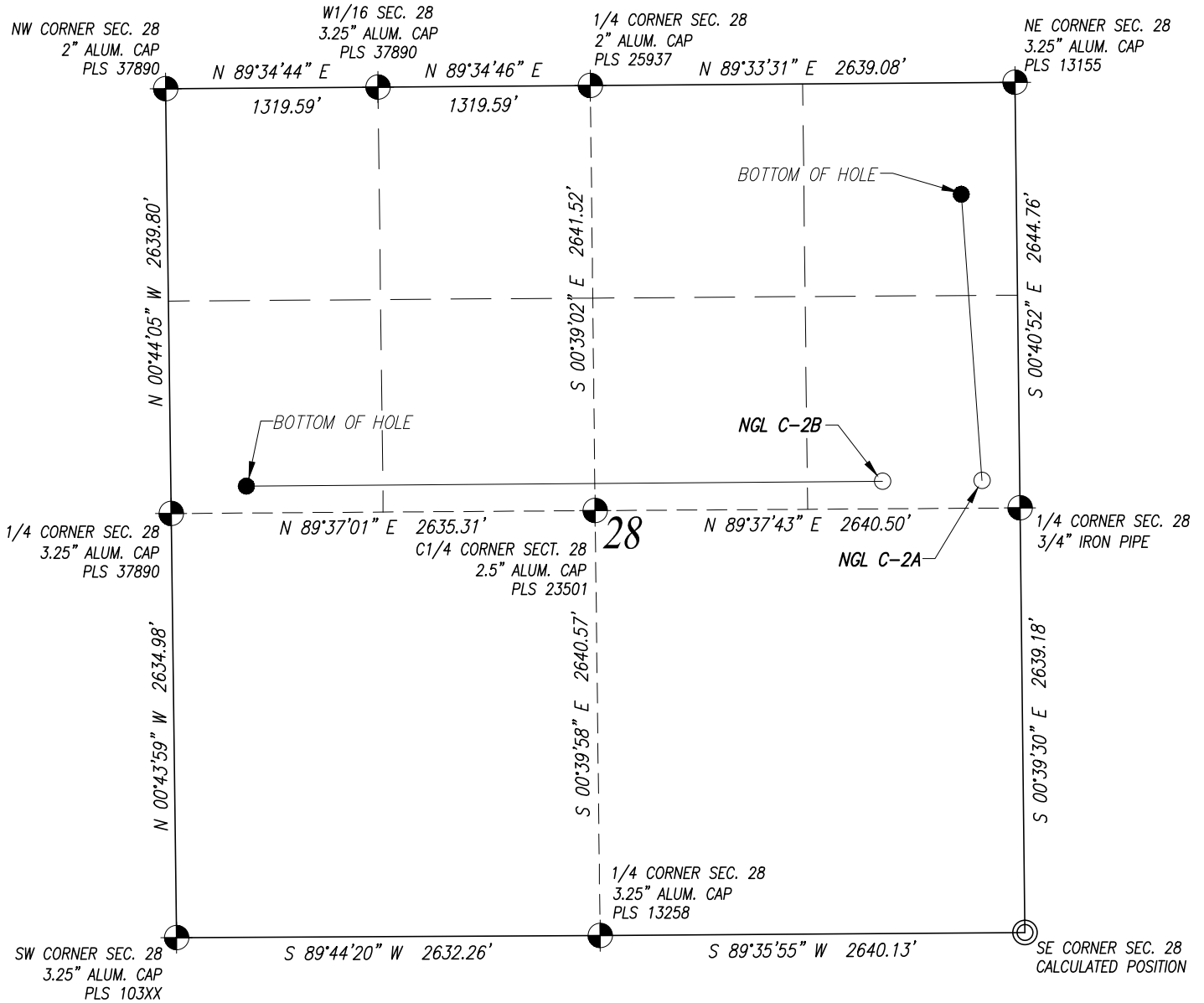


# MULTI WELL PLAN: NGL C-2A & C-2B

SECTION 28, TOWNSHIP 1 NORTH, RANGE 67 WEST, 6TH P.M. WELD COUNTY, COLORADO



## LEGEND

- ⊕ = FOUND SECTION CORNER
- ⊙ = CALCULATED SECTION CORNER
- = PROPOSED WELL
- = BOTTOM HOLE

NGL C-2A  
 SURFACE: 2473' FNL, 235' FEL  
 BOTTOM HOLE: 693' FNL, 342' FEL

NGL C-2B  
 SURFACE: 2473' FSL, 852' FEL  
 BOTTOM HOLE: 2473' FNL, 470' FWL

PREPARED FOR:

NGL WATER  
 SOLUTIONS DJ, LLC

**Acklam, Inc.**

MULTI WELL PLAN - NGL C-2A & C-2B

DATE SURVEYED: 08/27/2015

DATE DRAFTED: 09/22/2015

DRAFTED BY: SMF CHK BY: JAM

JOB No. 155081 REVISED:

## SURFACE LOCATION

SE1/4 NE1/4 SECTION 28, T1N, R67W, 6TH P.M.  
 WELD COUNTY, COLORADO

NOTICE: According to Colorado law you must commence any legal action based upon any defect in this survey within three years after you first discover such defect. In no event may any action based upon any defect in this survey be commenced more than ten years from the date of the certification shown hereon.