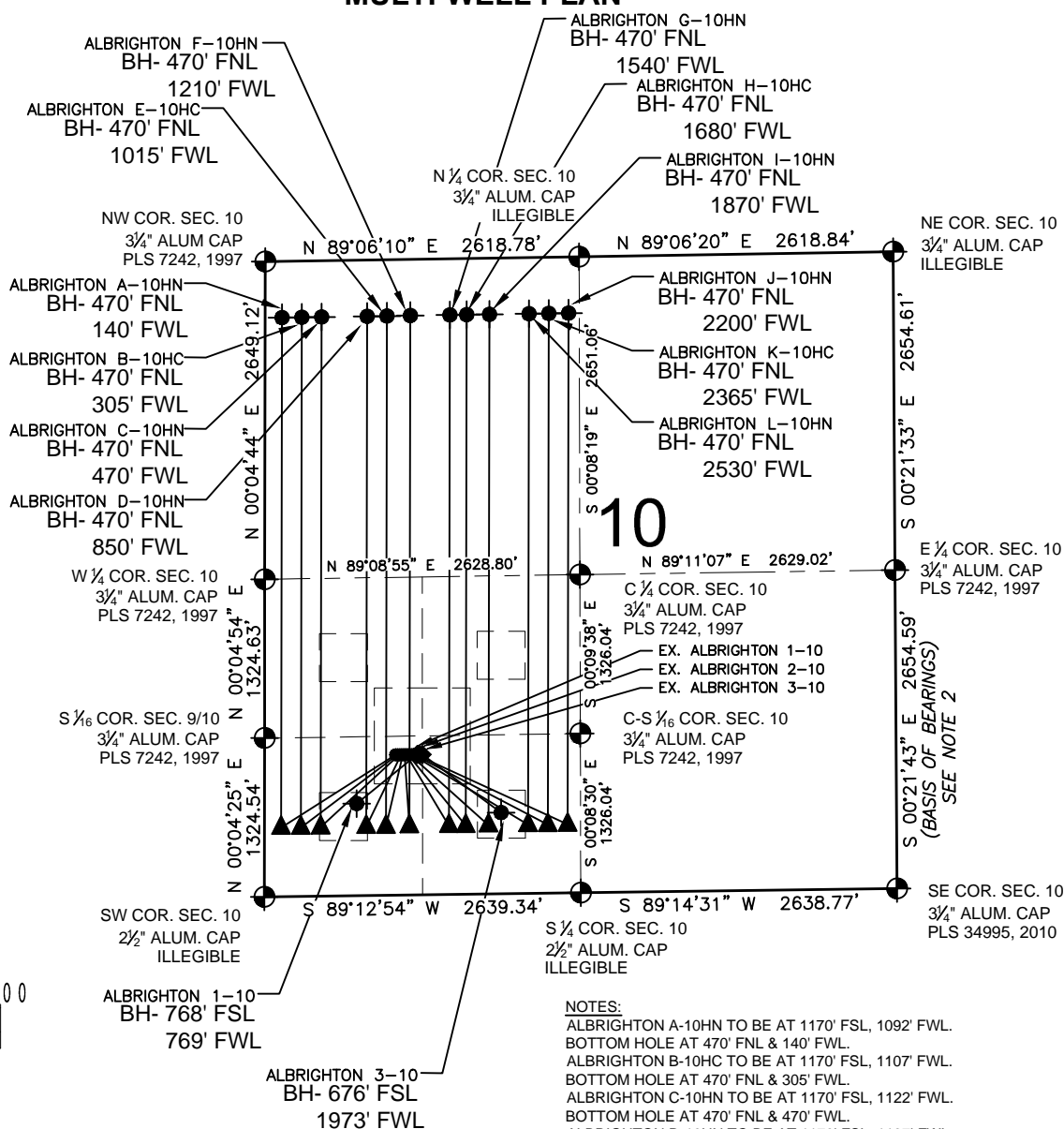


# ALBRIGHTON 10-P PAD MULTI-WELL PLAN



## NOTES:

- ALBRIGHTON A-10HN TO BE AT 1170' FSL, 1092' FWL.  
BOTTOM HOLE AT 470' FNL & 140' FWL.  
ALBRIGHTON B-10HC TO BE AT 1170' FSL, 1107' FWL.  
BOTTOM HOLE AT 470' FNL & 305' FWL.  
ALBRIGHTON C-10HN TO BE AT 1170' FSL, 1122' FWL.  
BOTTOM HOLE AT 470' FNL & 470' FWL.  
ALBRIGHTON D-10HN TO BE AT 1170' FSL, 1137' FWL.  
BOTTOM HOLE AT 470' FNL & 850' FWL.  
ALBRIGHTON E-10HC TO BE AT 1170' FSL, 1152' FWL.  
BOTTOM HOLE AT 470' FNL & 1015' FWL.  
ALBRIGHTON F-10HN TO BE AT 1170' FSL, 1167' FWL.  
BOTTOM HOLE AT 470' FNL & 1210' FWL.  
ALBRIGHTON G-10HN TO BE AT 1170' FSL, 1182' FWL.  
BOTTOM HOLE AT 470' FNL & 1540' FWL.  
ALBRIGHTON H-10HC TO BE AT 1170' FSL, 1197' FWL.  
BOTTOM HOLE AT 470' FNL & 1680' FWL.  
ALBRIGHTON I-10HN TO BE AT 1170' FSL, 1212' FWL.  
BOTTOM HOLE AT 470' FNL & 1870' FWL.  
ALBRIGHTON J-10HN TO BE AT 1170' FSL, 1227' FWL.  
BOTTOM HOLE AT 470' FNL & 2200' FWL.  
ALBRIGHTON K-10HC TO BE AT 1170' FSL, 1242' FWL.  
BOTTOM HOLE AT 470' FNL & 2365' FWL.  
ALBRIGHTON L-10HN TO BE AT 1170' FSL, 1257' FWL.  
BOTTOM HOLE AT 470' FNL & 2530' FWL.
- EX. ALBRIGHTON 1-10 IS AT 1170' FSL, 1272' FWL.  
BOTTOM HOLE AT 768' FSL & 769' FWL.  
EX. ALBRIGHTON 2-10 IS AT 1170' FSL, 1294' FWL.  
EX. ALBRIGHTON 3-10 IS AT 1169' FSL, 1316' FWL.  
BOTTOM HOLE AT 676' FSL & 1973' FWL.

## LEGEND

- = EXISTING MONUMENT    ◆ = BOTTOM HOLE  
○ = CALCULATED POSITION    ◆ = EXISTING WELL  
● = PROPOSED WELL    LP = LANDING POINT  
▲ = LANDING POINT    BH = BOTTOM HOLE

## NOTES:

- THIS FIELD SURVEY CONFORMS TO THE MINIMUM STANDARDS SET BY THE C.O.G.C.C., RULE NO. 215
- BEARINGS ARE BASED UPON THE ASSUMPTION THAT THE EAST LINE OF THE SOUTHEAST QUARTER OF SECTION 10, BEARS S00°21'43"E BETWEEN THE MONUMENTS SHOWN HEREON.
- GRID DISTANCES ARE SHOWN, AS GPS MEASURED IN THE FIELD, WITH TIES TO WELLS MEASURED PERPENDICULAR TO SECTION LINES. TO GET GROUND DISTANCES MULTIPLY THE SHOWN DISTANCE BY 1.000257538.
- MONUMENT VERIFICATION COMPLETED WITHIN 1 YEAR OF SIGNATURE DATE.

PREPARED BY:



FIELD DATE:

06-08-15

DRAWING DATE:

09-10-15

BY:

KAD

CHECKED BY:

WDW

SITE NAME:

ALBRIGHTON 10-P PAD

SURFACE LOCATION:

SW 1/4 SW 1/4 SEC. 10, T6N, R64W, 6TH P.M.  
WELD COUNTY, COLORADO

PREPARED FOR:



BAYSWATER  
EXPLORATION AND PRODUCTION, LLC