

**ANADARKO PETROLEUM CORP - EBUS
DO NOT MAIL - PO BOX 4995
THE WOODLANDS, Texas**

NRC 30C-4HZ

Majors 42

Post Job Summary **Cement Surface Casing**

Date Prepared: 2/18/2014
Version: 1

Service Supervisor: DEAN, MARK

Submitted by: PRUDHOMME, JOSHUA

HALLIBURTON

HALLIBURTON

Wellbore Geometry

Job Tubulars					MD		Shoe Joint Length ft
Type	Description	Size in	ID in	Wt lbm/ft	Top ft	Bottom ft	
Casing	9 5/8" Surface Casing	9.63	8.921	36.00	0.00	1,085.00	45.00
Open Hole Section	13 1/2" Open Hole Section		13.500		0.00	1,085.00	0.00

HALLIBURTON

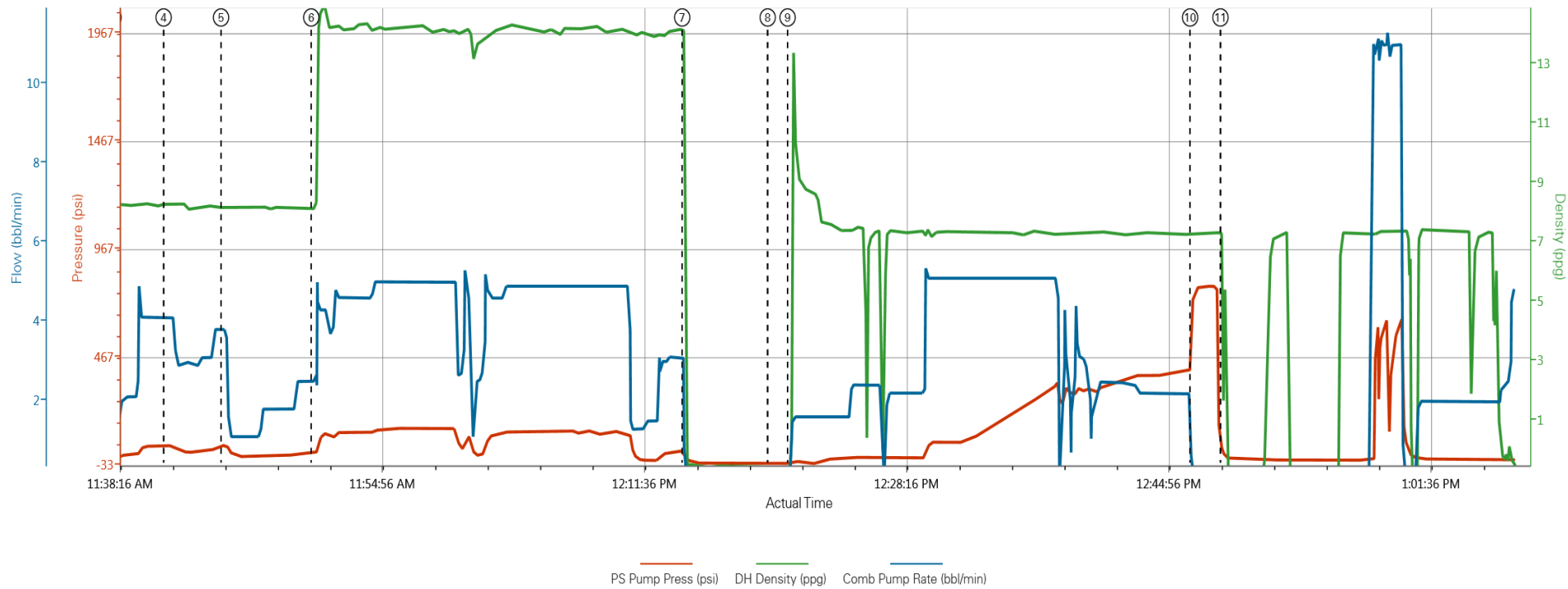
Pumping Schedule

Stage /Plug #	Fluid #	Fluid Type	Fluid Name	Surface Density lbm/gal	Avg Rate bbl/min	Surface Volume	Downhole Volume
1	1	Spacer	Fresh Water Spacer	8.33	4.0	10.0 bbl	10.0 bbl
1	2	Spacer	Mud Flush	8.40	4.0	12.0 bbl	12.0 bbl
1	1	Spacer	Fresh Water Spacer	8.33	2.0	10.0 bbl	10.0 bbl
1	3	Cement Slurry	SwiftCem B2	14.2	5.0	388 sacks	388 sacks

HALLIBURTON

Data Acquisition

Anadarko Surface 02-10-14



① Start Job 0;1.93;0 ④ Pump Mud Flush 59;8.25;4.1 ⑦ Shutdown 18;-0.44;0 ⑩ Bump Plug 733;7.3;0
 ② Test Lines -1;8.25;0 ⑤ Pump Water 61;8.18;3.8 ⑧ Drop Top Plug -22;-0.61;0 ⑪ Check Floats 29;4.12;0
 ③ Pump Water -1;8.32;0 ⑥ Pump Cement 27;8.13;2.5 ⑨ Pump Displacement -22;-0.6;0

▼ HALLIBURTON | iCem® Service

Created: 2014-02-10 10:47:00, Version: 3.0.121

Edit

Customer: ANADARKO PETROLEUM CORP -
EBUS

Job Date: 2/10/2014 11:10:42 AM

Well: 30C-4H2

Representative: Bob Porter

Sales Order #: 901108802

Red Tiger#: 11341988

Service Supervisor Reports

Job Log

Date/Time	Chart #	Activity Code	Pump Rate	Cum Vol	Pump	Pressure (psig)	Comments
02/10/2014 05:00		Call Out					Crew Called Out @ 05:00
02/10/2014 08:45		Pre-Convoy Safety Meeting					Discussed Planned Route, Equipment Checks & Safe Driving
02/10/2014 09:00		Depart from Service Center or Other Site					Departed Yard in Convoy
02/10/2014 10:00		Arrive at Location from Service Center					Pulled Equipment Off the Road to Inspect Site.
02/10/2014 10:05		Assessment Of Location Safety Meeting					Discussed Layout & Spotting Equipment
02/10/2014 10:10		Pre-Rig Up Safety Meeting					Discussed PPE, Red Zones, Working in the Snow & Other Hazards
02/10/2014 10:15		Rig-Up Equipment					Rigged up Safely to Customer & HES Standards
02/10/2014 11:15		Pre-Job Safety Meeting					Discussed Job Procedure & Safety Concerns with Customer & Crew
02/10/2014 11:27		Test Lines					Tested Lines to 1500 psi (Pressure Held) Reset KO's to 500psi
02/10/2014 11:33		Pump Water	4	10		55.0	Pumped 10 BBL Water Ahead
02/10/2014 11:35		Pump Spacer	4	12		60.0	Pumped 12 BBL Mud Flush III
02/10/2014 11:39		Pump Water	2	10		35.0	Pumped 10 BBL Fresh Water Behind
02/10/2014 11:46		Pump Cement	5	106		140.0	Pumped 106 BBL CMT @ D: 14.2# Y: 1.54 W: 7.66 (388 sks)
02/10/2014 12:09		Shutdown					Shutdown to Drop Plug
02/10/2014 12:11		Drop Plug					Tattle Tell Opened. Plug Left Head
02/10/2014 12:16		Clean Lines					Cleaned Lines on top of plug with first 10 BBL Displacement
02/10/2014 12:16		Pump Displacement	5	80		80.0	Pumped 80 BBL of Fresh Water Displacement
02/10/2014 12:39		Cement Returns to Surface	2.5	75		380.0	5 BBL Total Cement Returned to Surface
02/10/2014 12:42		Bump Plug	2	80		400.0	Bumped Plug @ 400psi. 500 psi over to 900psi
02/10/2014 12:44		Check Floats					.5 BBL back to Truck (Floats held)
02/10/2014 12:45		Pre-Rig Down Safety Meeting					Discussed Trapped Pressure, Overhead Loads, & Other Hazards.
02/10/2014 13:00		Rig-Down Equipment					Rigged Down Safely to Customer & HES Standards.
02/10/2014 14:15		Pre-Convoy Safety Meeting					Discussed Safe Driving.
02/10/2014 14:30		Depart Location for Service Center or Other Site					Thank you for Choosing Halliburton!

The Road to Excellence Starts with Safety

Sold To #: 300466	Ship To #: 3274379	Quote #:	Sales Order #: 901108802
Customer: ANADARKO PETROLEUM CORP - EBUS		Customer Rep: Porter, Bob	
Well Name: NRC		Well #: 30C-4HZ	API/UWI #: 05-123-38628
Field: WATTENBERG	City (SAP): IONE	County/Parish: Weld	State: Colorado
Contractor: Majors		Rig/Platform Name/Num: Majors 42	
Job Purpose: Cement Surface Casing			
Well Type: Development Well		Job Type: Cement Surface Casing	
Sales Person: GREGORY, JON		Srvc Supervisor: DEAN, MARK	MBU ID Emp #: 454214

Job Personnel

HES Emp Name	Exp Hrs	Emp #	HES Emp Name	Exp Hrs	Emp #	HES Emp Name	Exp Hrs	Emp #
DEAN, MARK Christophe	0.0	454214	GLEESON, JAY Christophe	0.0	560216	HINKLE, BRADLEY Dean	0.0	512123

Equipment

HES Unit #	Distance-1 way	HES Unit #	Distance-1 way	HES Unit #	Distance-1 way	HES Unit #	Distance-1 way
10866493C	20 mile	11341988C	20 mile				
TOTAL				Total is the sum of each column separately			

Job

Formation Name					Job Times			
Formation Depth (MD)	Top		Bottom		Called Out	Date	Time	Time Zone
Form Type		BHST			On Location	10 - Feb - 2014	05:00	MST
Job depth MD	1085. ft	Job Depth TVD	1085. ft		Job Started	10 - Feb - 2014	10:00	MST
Water Depth		Wk Ht Above Floor			Job Completed	10 - Feb - 2014	11:25	MST
Perforation Depth (MD)	From		To		Departed Loc	10 - Feb - 2014	12:45	MST

Well Data

Description	New / Used	Max pressure psig	Size in	ID in	Weight lbm/ft	Thread	Grade	Top MD ft	Bottom MD ft	Top TVD ft	Bottom TVD ft
13 1/2" Open Hole Section				13.5				.	1085.		
9 5/8" Surface Casing	Unknown		9.625	8.921	36.		J-55	.	1085.		

Fluid Data									
Stage/Plug #: 1									
Fluid #	Stage Type	Fluid Name	Qty	Qty uom	Mixing Density lbm/gal	Yield ft ³ /sk	Mix Fluid Gal/sk	Rate bbl/min	Total Mix Fluid Gal/sk
1	Fresh Water Spacer		10.0	bbl	8.33			4.0	
2	Mud Flush		12.0	bbl	8.40			4.0	
3.5 lbm/bbl		MUD FLUSH III, 40 LB SACK (101633304)							
42 gal/bbl		MUD FLUSH III - SBM (528788)							
1	Fresh Water Spacer		10.0	bbl	8.33			2.0	
3	SwiftCem B2	SWIFTCEN (TM) SYSTEM (452990)	388	sacks	14.2	1.54	7.66	5.0	7.66
7.66 Gal		FRESH WATER							
Calculated Values		Pressures		Volumes					
Displacement		Shut In: Instant		Lost Returns		Cement Slurry		Pad	
Top Of Cement		5 Min		Cement Returns		5.0		Actual Displacement 80.0	
Frac Gradient		15 Min		Spacers		32.0		Load and Breakdown	
Total Job									
Rates									
Circulating		Mixing		Displacement		Avg. Job			
Cement Left In Pipe		Amount 45 ft		Reason		Shoe Joint			
Frac Ring # 1 @		ID		Frac ring # 2 @		ID		Frac Ring # 4 @	
The Information Stated Herein Is Correct				Customer Representative Signature					

