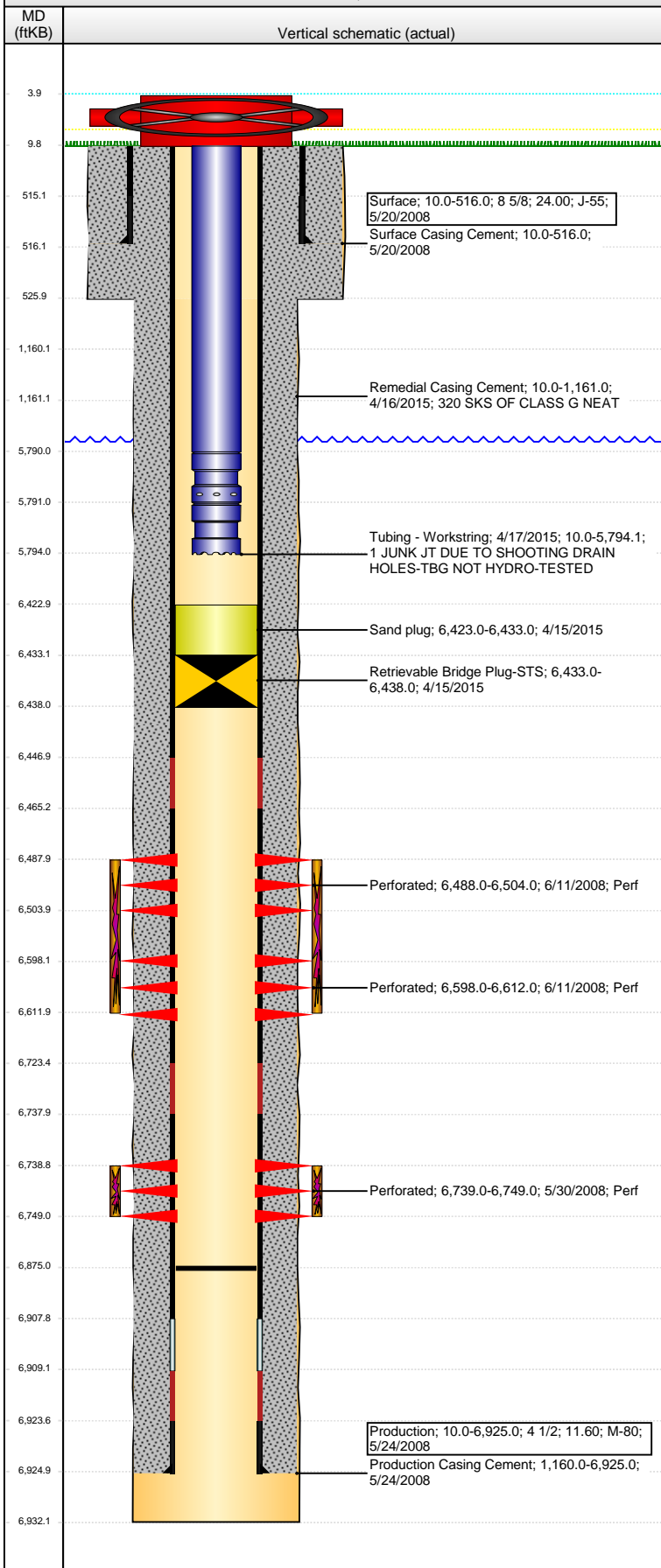


Well Name: SULLIVAN USX AD17-13

VERTICAL - ORIGINAL HOLE, 9/21/2015 11:16:04 AM



Well Header

API 05-123-26044	Business Unit DJ BASIN	District 15	Well Config VERTICAL
Original KB Elevation (ft) 4,773.00	KB - GL / MSL (ftKB) 10.00	Spud Date 5/20/2008	P & A Date

Comment

Directions To Well

From the intersection of CR 80 and HWY 392 head North on HWY 392 0.3 miles. East 100', South 0.1, East 0.1 into location.

Congressional Location

Quarter 1	Quarter 2	Quarter 3	Quarter 4	Section	Township	Twnshp N...	Range	Rng E/W Dir
		SW	SW	17	7	N	62	W

Bottom Hole Location

North-South Distance (ft)	From N or S Line	East-West Distance (ft)	From E or W Line

Plug Back Total Depths

Date	Depth (ftKB)	Method	Com
5/24/2008	6,908.0	CASING TALLY	
3/20/2009	6,875.0	TAG	TAGGED USING TBG TALLY DEPTH.

Wellbore Sections

Section Des	Size (in)	Act Top, MD (ftKB)	Act Btm, MD (ftKB)
SURFACE	12 1/4	10.0	526.0
PRODUCTION	7 7/8	526.0	6,932.0

Zone Statuses

Zone Name	Status Date	Status	Fluid Type	Job	Prod Method
CODELL	9/4/2008	PR		DRILLING/CO...	
NIOBRARA	9/4/2008	PR		DRILLING/CO...	

Casing Strings

Surface, 516.0ftKB

Casing Description	Run Date	OD (in)	Wt/Len (l...)	Grade	Top, MD (ft...)	MD (ftKB)
Surface	5/20/2008	8 5/8	24.00	J-55	10.0	516.0

Production, 6,925.0ftKB

Casing Description	Run Date	OD (in)	Wt/Len (l...)	Grade	Top, MD (ft...)	MD (ftKB)
Production	5/24/2008	4 1/2	11.60	M-80	10.0	6,925.0

Cement

Description	Top Depth (ftKB)	Bottom Depth (ftKB)
Surface Casing Cement	10.0	516.0
Production Casing Cement	1,160.0	6,925.0
Remedial Casing Cement	10.0	1,161.0

Tubing Strings

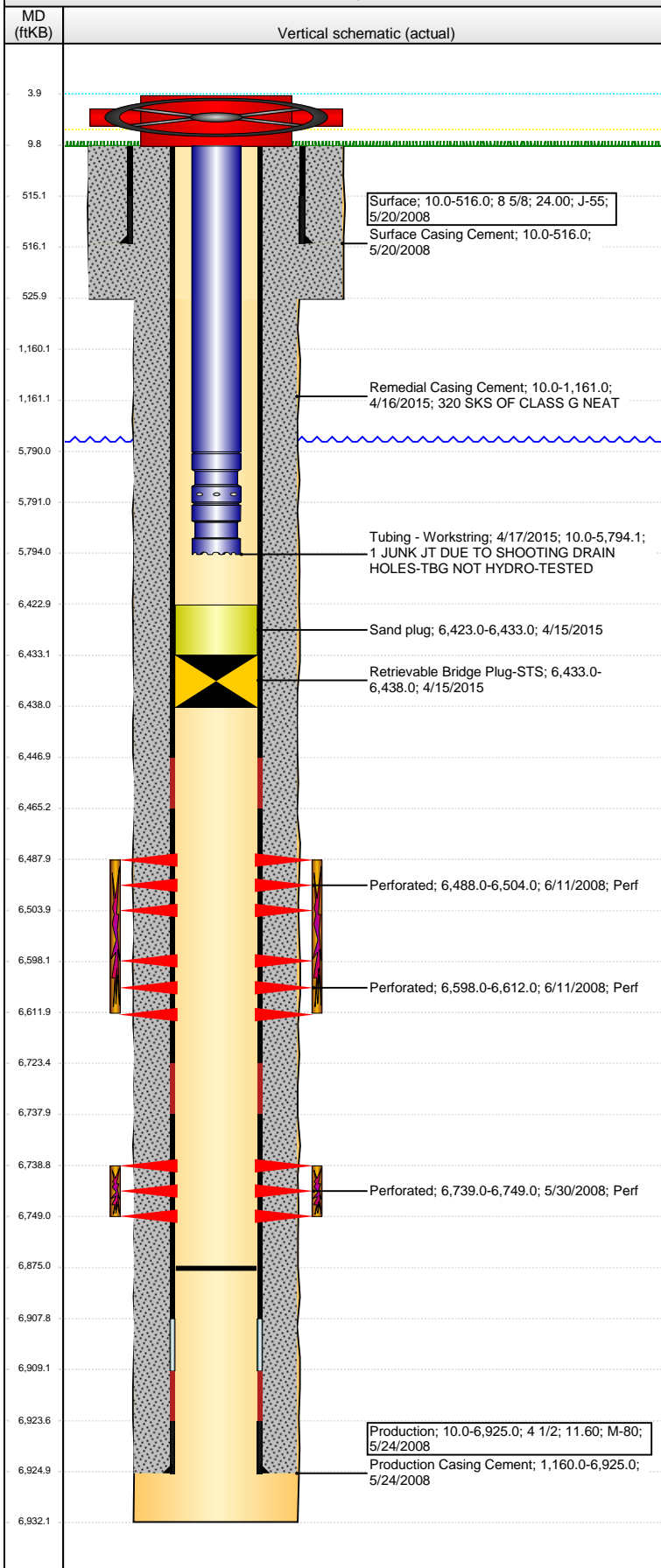
Tubing Description	Run Date	String...	ID (in)	Wt (lb/ft)	Grade	Len (ft)	Set De...
Tubing - Production	9/5/2008	2 3/8	1.995	4.70	J-55	6,469.75	6,477.5
Tubing - Production	3/20/2009	2 3/8	1.995	4.70	J-55	6,828.29	6,835.2
Tubing - Production	8/25/2009	2 3/8	1.995	4.70	J-55	6,812.42	6,820.3
Tubing - Production	8/27/2009	2 3/8	1.995	4.70	J-55	6,812.42	6,820.7
Tubing - Production	8/4/2011	2 3/8	1.995	4.70	J-55	6,809.59	6,819.5
Tubing - Workstring	4/17/2015	2 3/8	1.995	4.70	J-55	5,784.12	5,794.0

Tubing Components

Item Des	OD (in)	Wt (lb/ft)	Grade	Jts	Len (ft)	Btm (ftKB)	Btm (TVD) (ftKB)
EUE 8rd Tubing	2 3/8	4.70	J-55	188	5,780.02	5,790.0	
Pump Seating Nipple	2 3/8	1.10		1	1.10	5,791.1	5,791.0
On-Off Tool	2 3/8			1	3.00	5,794.1	5,794.0

Well Name: SULLIVAN USX AD17-13

VERTICAL - ORIGINAL HOLE, 9/21/2015 11:16:06 AM



Perforation Data

Zone	Brnch/St g	Entered Shot Total	Top (ftKB)	Btm (ftKB)	Date
NIOBRARA, ORIGINAL HOLE	A	64	6,488.00	6,504.00	6/11/2008
NIOBRARA, ORIGINAL HOLE	B	56	6,598.00	6,612.00	6/11/2008
CODELL, ORIGINAL HOLE		40	6,739.00	6,749.00	5/30/2008

Stimulations & Treatments

Date	Zone	Primary Job Type
6/11/2008	CODELL, ORIGINAL HOLE	DRILLING/COMPLETION - ORIGINAL
Technical Result	Tech Result Details	Tech Result Note
Success	According to Plan	
Comment (CODELL): 5 MIN ISDP = 2439, INCREASE TREATING RATE TO 22 BPM. JOB WENT WELL WITH NO ISSUES TO REPORT.		
Date	Zone	Primary Job Type
6/11/2008	NIOBRARA, ORIGINAL HOLE	DRILLING/COMPLETION - ORIGINAL
Technical Result	Tech Result Details	Tech Result Note
Success	According to Plan	
Comment (NIOBRARA): JOB WENT WELL WITH NO ISSUES TO REPORT.		

Other In Hole

Run Date	Des	OD (in)	Top (ftKB)	Btm (ftKB)
4/15/2015	Retrieval Bridge Plug-STS	3.99	6,433.0	6,438.0
4/15/2015	Sand plug	3.99	6,423.0	6,433.0

Logs

Date	Type	Top, MD (ftKB)	Btm, MD (ftKB)
5/23/2008	Caliper/Comp. Density/Neutron/GR/SP/ML	2,700.0	6,910.0
5/23/2008	DIL/GR/SP/Caliper	515.0	6,930.0
5/29/2008	CBL/CCL/GR	1,000.0	6,874.0
4/17/2015	CBL/CCL/GR	0.0	1,500.0