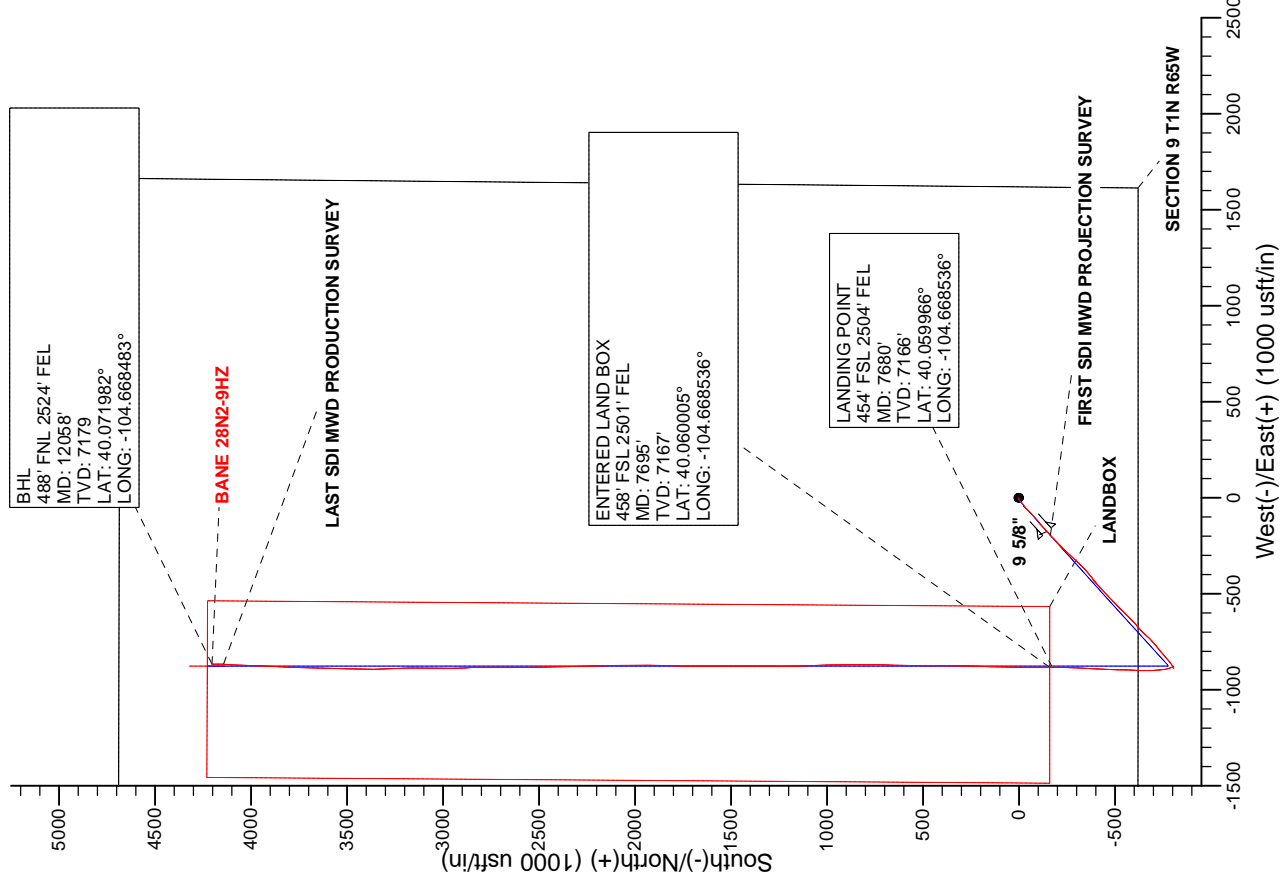
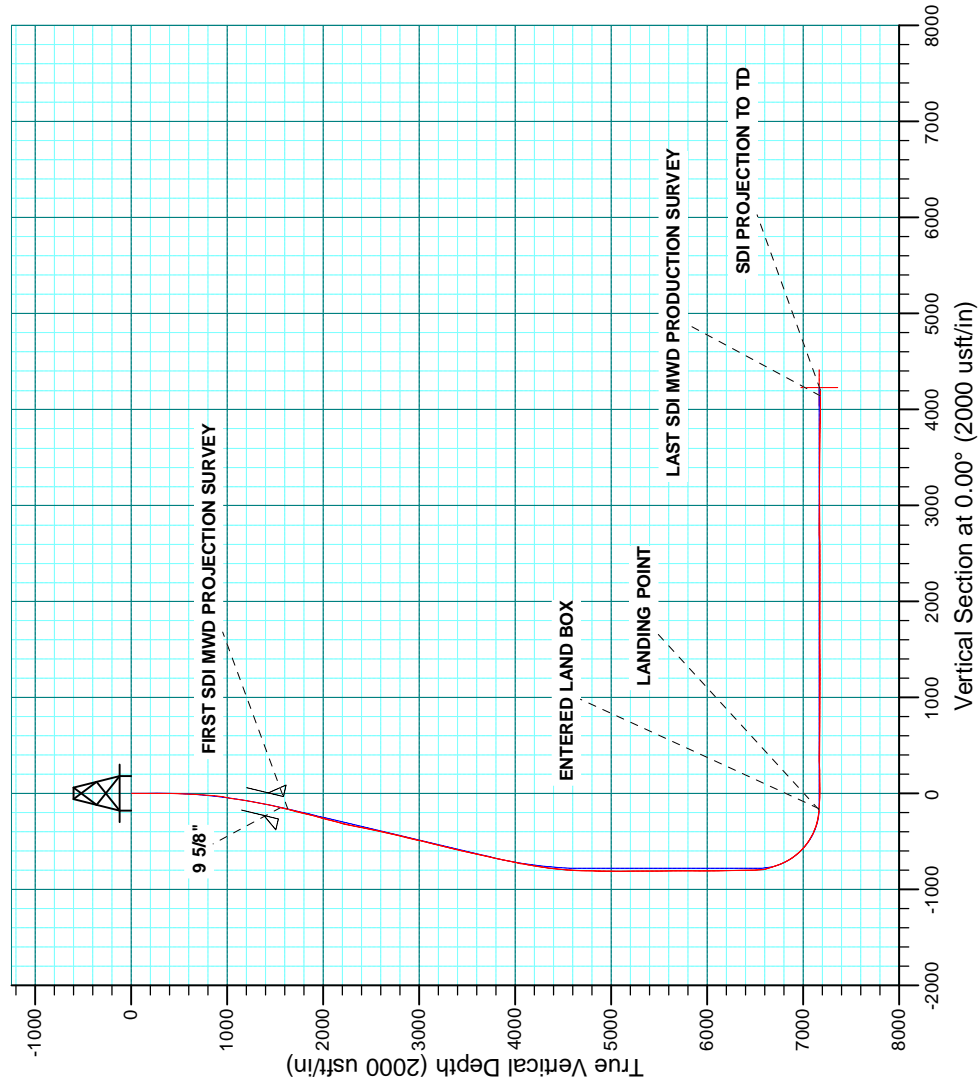


WELL DETAILS: BANE 28N2-9HZ					
GL 4964 & KB 25 @ 4989.00usft (HP 307)					
+N-S 0.00	+E-W 0.00	Northing 14548919.29	Easting 1734045.01	Latitude 40.060443	Longitude -104.665379

PROJECT DETAILS: WELD-NAD83-UTMT13N
Geodetic System: Universal Transverse Mercator (US Survey Feet)
Datum: North American Datum 1983
Ellipsoid: GRS 1980
Location: Zone 13N (108 W to 102 W)
System Datum: Mean Sea Level



<b>Company:</b>	US ROCKIES WATTENBERG PLANNING	<b>Local Co-ordinate Reference:</b>	Well BANE 28N2-9HZ
<b>Project:</b>	WELD-NAD83-UTMFT13N	<b>TVD Reference:</b>	GL 4964 & KB 25 @ 4989.00usft (HP 307)
<b>Site:</b>	1N-65W-09 Bane Pad	<b>MD Reference:</b>	GL 4964 & KB 25 @ 4989.00usft (HP 307)
<b>Well:</b>	BANE 28N2-9HZ	<b>North Reference:</b>	True
<b>Wellbore:</b>	Plan A	<b>Survey Calculation Method:</b>	Minimum Curvature
<b>Design:</b>	Plan A	<b>Database:</b>	Denver Sales Office

<b>Project</b>	WELD-NAD83-UTMFT13N		
<b>Map System:</b>	Universal Transverse Mercator (US Survey Feet)	<b>System Datum:</b>	Mean Sea Level
<b>Geo Datum:</b>	North American Datum 1983		
<b>Map Zone:</b>	Zone 13N (108 W to 102 W)		

Site		1N-65W-09 Bane Pad			
Site Position:		Northing:	14,548,919.51 usft	Latitude:	40.060443
From:	Lat/Long	Easting:	1,734,104.05 usft	Longitude:	-104.665168
Position Uncertainty:	0.00 usft	Slot Radius:	13.200 in	Grid Convergence:	0.22 °

Well	BANE 28N2-9HZ, 620' FSL 1620' FEL					
Well Position	+N/-S	0.00 usft	Northing:	14,548,919.29 usft	Latitude:	40.060443
	+E/-W	0.00 usft	Easting:	1,734,045.01 usft	Longitude:	-104.665379
Position Uncertainty		2.68 usft	Wellhead Elevation:	usft	Ground Level:	4,964.00 usft

<b>Wellbore</b>	Plan A				
<b>Magnetics</b>	<b>Model Name</b>	<b>Sample Date</b>	<b>Declination (°)</b>	<b>Dip Angle (°)</b>	<b>Field Strength (nT)</b>
	IGRF2010	10/20/2014	8.33	66.68	52,609

<b>Design</b>	Plan A				
<b>Audit Notes:</b>					
<b>Version:</b>	1.0	<b>Phase:</b>	ACTUAL	<b>Tie On Depth:</b>	0.00
<b>Vertical Section:</b>	<b>Depth From (TVD) (usft)</b>	<b>+N/-S (usft)</b>	<b>+E/-W (usft)</b>	<b>Direction (°)</b>	
	0.00	0.00	0.00		0.00

<b>Survey Program</b>	<b>Date</b>	7/28/2015			
<b>From (usft)</b>	<b>To (usft)</b>	<b>Survey (Wellbore)</b>	<b>Tool Name</b>	<b>Description</b>	
20.00	1,575.00	Survey #1 CATHEDRAL MWD SURFACE	APC_ISCWSA REV 2 MWD	Fixed:v2:standard declination	
1,669.00	12,058.00	Survey #2 SDI MWD PRODUCTION (Plan	APC_ISCWSA REV 2 MWD+	Fixed:v2:crustal field declination	

<b>Survey</b>										
<b>Measured Depth (usft)</b>	<b>Inclination (°)</b>	<b>Azimuth (°)</b>	<b>Vertical Depth (usft)</b>	<b>+N/-S (usft)</b>	<b>+E/-W (usft)</b>	<b>Vertical Section (usft)</b>	<b>Dogleg Rate (°/100usft)</b>	<b>Build Rate (°/100usft)</b>	<b>Turn Rate (°/100usft)</b>	
0.00	0.00	0.00	0.00	0.00	0.00	0.00	0.00	0.00	0.00	
20.00	0.00	0.00	20.00	0.00	0.00	0.00	0.00	0.00	0.00	
106.00	0.60	335.40	106.00	0.41	-0.19	0.41	0.70	0.70	0.00	
168.00	0.90	342.20	167.99	1.17	-0.47	1.17	0.50	0.48	10.97	
226.00	0.80	278.40	225.99	1.66	-1.01	1.66	1.56	-0.17	-110.00	
283.00	1.70	258.00	282.97	1.54	-2.23	1.54	1.74	1.58	-35.79	
343.00	2.00	256.20	342.94	1.11	-4.12	1.11	0.51	0.50	-3.00	
407.00	2.50	253.70	406.89	0.45	-6.54	0.45	0.80	0.78	-3.91	
471.00	2.90	251.60	470.82	-0.45	-9.42	-0.45	0.64	0.63	-3.28	
535.00	3.10	231.70	534.74	-2.04	-12.31	-2.04	1.65	0.31	-31.09	

<b>Company:</b>	US ROCKIES WATTENBERG PLANNING	<b>Local Co-ordinate Reference:</b>	Well BANE 28N2-9HZ
<b>Project:</b>	WELD-NAD83-UTMFT13N	<b>TVD Reference:</b>	GL 4964 & KB 25 @ 4989.00usft (HP 307)
<b>Site:</b>	1N-65W-09 Bane Pad	<b>MD Reference:</b>	GL 4964 & KB 25 @ 4989.00usft (HP 307)
<b>Well:</b>	BANE 28N2-9HZ	<b>North Reference:</b>	True
<b>Wellbore:</b>	Plan A	<b>Survey Calculation Method:</b>	Minimum Curvature
<b>Design:</b>	Plan A	<b>Database:</b>	Denver Sales Office

Survey									
Measured Depth (usft)	Inclination (°)	Azimuth (°)	Vertical Depth (usft)	+N-S (usft)	+E-W (usft)	Vertical Section (usft)	Dogleg Rate (°/100usft)	Build Rate (°/100usft)	Turn Rate (°/100usft)
599.00	4.30	231.70	598.60	-4.60	-15.55	-4.60	1.88	1.88	0.00
662.00	5.40	230.80	661.37	-7.93	-19.71	-7.93	1.75	1.75	-1.43
726.00	6.60	232.50	725.02	-12.08	-24.96	-12.08	1.90	1.88	2.66
790.00	7.60	233.80	788.53	-16.81	-31.29	-16.81	1.58	1.56	2.03
853.00	9.20	233.40	850.85	-22.28	-38.70	-22.28	2.54	2.54	-0.63
917.00	10.90	230.40	913.87	-29.19	-47.47	-29.19	2.78	2.66	-4.69
981.00	12.00	226.20	976.60	-37.65	-56.93	-37.65	2.16	1.72	-6.56
1,044.00	12.50	224.70	1,038.16	-47.03	-66.45	-47.03	0.94	0.79	-2.38
1,107.00	12.60	223.40	1,099.66	-56.87	-75.97	-56.87	0.48	0.16	-2.06
1,171.00	12.60	224.70	1,162.12	-66.90	-85.68	-66.90	0.44	0.00	2.03
1,235.00	13.40	229.40	1,224.48	-76.69	-96.22	-76.69	2.07	1.25	7.34
1,299.00	15.40	231.60	1,286.46	-86.79	-108.51	-86.79	3.24	3.13	3.44
1,362.00	16.90	230.20	1,346.98	-97.85	-122.10	-97.85	2.46	2.38	-2.22
1,426.00	17.90	228.80	1,408.05	-110.29	-136.65	-110.29	1.69	1.56	-2.19
1,490.00	18.70	228.60	1,468.81	-123.55	-151.75	-123.55	1.25	1.25	-0.31
1,554.00	19.30	228.50	1,529.32	-137.34	-167.36	-137.34	0.94	0.94	-0.16
1,575.00	19.40	228.70	1,549.14	-141.94	-172.58	-141.94	0.57	0.48	0.95
1,590.00	19.55	228.24	1,563.28	-145.26	-176.33	-145.26	1.41	0.98	-3.05
9 5/8"									
1,669.00	20.34	225.94	1,637.54	-163.61	-196.05	-163.61	1.41	1.00	-2.91
FIRST SDI MWD PROJECTION SURVEY									
1,763.00	20.59	226.94	1,725.61	-186.26	-219.87	-186.26	0.46	0.27	1.06
1,858.00	20.31	225.13	1,814.62	-209.29	-243.76	-209.29	0.73	-0.29	-1.91
1,953.00	19.90	223.88	1,903.83	-232.58	-266.65	-232.58	0.63	-0.43	-1.32
2,047.00	20.10	224.29	1,992.16	-255.67	-289.02	-255.67	0.26	0.21	0.44
2,141.00	19.74	223.05	2,080.54	-278.83	-311.13	-278.83	0.59	-0.38	-1.32
2,236.00	19.31	220.14	2,170.08	-302.57	-332.21	-302.57	1.12	-0.45	-3.06
2,330.00	18.14	224.32	2,259.11	-324.92	-352.46	-324.92	1.89	-1.24	4.45
2,425.00	17.73	231.31	2,349.50	-344.54	-374.08	-344.54	2.31	-0.43	7.36
2,519.00	17.27	231.10	2,439.15	-362.25	-396.11	-362.25	0.49	-0.49	-0.22
2,614.00	17.05	232.33	2,529.92	-379.62	-418.11	-379.62	0.45	-0.23	1.29
2,709.00	18.70	231.02	2,620.33	-397.71	-440.98	-397.71	1.79	1.74	-1.38
2,803.00	18.97	224.85	2,709.31	-418.02	-463.47	-418.02	2.14	0.29	-6.56
2,898.00	18.83	226.01	2,799.19	-439.62	-485.39	-439.62	0.42	-0.15	1.22
2,992.00	19.20	229.31	2,888.06	-460.23	-508.02	-460.23	1.21	0.39	3.51
3,087.00	18.78	224.57	2,977.89	-481.31	-530.60	-481.31	1.68	-0.44	-4.99
3,181.00	19.92	226.27	3,066.58	-503.16	-552.79	-503.16	1.35	1.21	1.81
3,276.00	19.14	226.01	3,156.12	-525.17	-575.69	-525.17	0.83	-0.82	-0.27
3,370.00	18.69	223.56	3,245.04	-546.78	-597.16	-546.78	0.97	-0.48	-2.61
3,465.00	19.06	225.36	3,334.93	-568.71	-618.68	-568.71	0.73	0.39	1.89
3,559.00	18.67	227.12	3,423.89	-589.74	-640.63	-589.74	0.73	-0.41	1.87
3,654.00	19.08	230.41	3,513.78	-609.98	-663.74	-609.98	1.20	0.43	3.46
3,748.00	17.80	224.71	3,602.96	-629.98	-685.69	-629.98	2.35	-1.36	-6.06

<b>Company:</b>	US ROCKIES WATTENBERG PLANNING	<b>Local Co-ordinate Reference:</b>	Well BANE 28N2-9HZ
<b>Project:</b>	WELD-NAD83-UTMFT13N	<b>TVD Reference:</b>	GL 4964 & KB 25 @ 4989.00usft (HP 307)
<b>Site:</b>	1N-65W-09 Bane Pad	<b>MD Reference:</b>	GL 4964 & KB 25 @ 4989.00usft (HP 307)
<b>Well:</b>	BANE 28N2-9HZ	<b>North Reference:</b>	True
<b>Wellbore:</b>	Plan A	<b>Survey Calculation Method:</b>	Minimum Curvature
<b>Design:</b>	Plan A	<b>Database:</b>	Denver Sales Office

Survey									
Measured Depth (usft)	Inclination (°)	Azimuth (°)	Vertical Depth (usft)	+N-S (usft)	+E-W (usft)	Vertical Section (usft)	Dogleg Rate (°/100usft)	Build Rate (°/100usft)	Turn Rate (°/100usft)
3,843.00	16.94	223.17	3,693.63	-650.40	-705.37	-650.40	1.03	-0.91	-1.62
3,937.00	17.13	222.74	3,783.50	-670.55	-724.14	-670.55	0.24	0.20	-0.46
4,032.00	17.40	226.79	3,874.22	-690.55	-743.99	-690.55	1.30	0.28	4.26
4,126.00	17.77	232.03	3,963.84	-709.00	-765.54	-709.00	1.73	0.39	5.57
4,221.00	16.05	230.47	4,054.73	-726.28	-787.10	-726.28	1.87	-1.81	-1.64
4,315.00	13.80	226.56	4,145.55	-742.26	-805.26	-742.26	2.62	-2.39	-4.16
4,410.00	13.79	229.26	4,237.81	-757.44	-822.07	-757.44	0.68	-0.01	2.84
4,504.00	13.53	231.03	4,329.15	-771.67	-839.11	-771.67	0.52	-0.28	1.88
4,599.00	10.55	230.48	4,422.05	-784.20	-854.46	-784.20	3.14	-3.14	-0.58
4,693.00	6.70	236.65	4,514.98	-792.69	-865.68	-792.69	4.21	-4.10	6.56
4,788.00	6.47	235.97	4,609.35	-798.73	-874.75	-798.73	0.26	-0.24	-0.72
4,882.00	4.70	243.76	4,702.90	-803.40	-882.59	-803.40	2.04	-1.88	8.29
4,977.00	1.58	237.48	4,797.75	-805.83	-887.19	-805.83	3.30	-3.28	-6.61
5,071.00	0.72	116.78	4,891.73	-806.79	-887.75	-806.79	2.17	-0.91	-128.40
5,166.00	0.58	66.99	4,986.73	-806.87	-886.78	-806.87	0.59	-0.15	-52.41
5,260.00	0.93	60.78	5,080.72	-806.31	-885.68	-806.31	0.38	0.37	-6.61
5,355.00	1.27	80.45	5,175.70	-805.76	-883.96	-805.76	0.53	0.36	20.71
5,449.00	1.32	69.71	5,269.68	-805.21	-881.92	-805.21	0.26	0.05	-11.43
5,543.00	1.73	56.10	5,363.65	-804.05	-879.73	-804.05	0.58	0.44	-14.48
5,638.00	1.71	149.85	5,458.62	-804.47	-877.83	-804.47	2.64	-0.02	98.68
5,732.00	0.23	48.45	5,552.61	-805.56	-876.98	-805.56	1.88	-1.57	-107.87
5,827.00	0.24	350.77	5,647.60	-805.24	-876.87	-805.24	0.24	0.01	-60.72
5,921.00	0.40	78.83	5,741.60	-804.98	-876.58	-804.98	0.49	0.17	93.68
6,016.00	0.37	332.56	5,836.60	-804.64	-876.40	-804.64	0.65	-0.03	-111.86
6,110.00	0.21	314.03	5,930.60	-804.25	-876.66	-804.25	0.20	-0.17	-19.71
6,205.00	0.68	275.13	6,025.60	-804.08	-877.35	-804.08	0.56	0.49	-40.95
6,299.00	1.82	327.29	6,119.58	-802.78	-878.71	-802.78	1.60	1.21	55.49
6,394.00	1.79	320.42	6,214.53	-800.36	-880.47	-800.36	0.23	-0.03	-7.23
6,488.00	1.27	320.95	6,308.50	-798.42	-882.06	-798.42	0.55	-0.55	0.56
6,583.00	1.25	329.37	6,403.47	-796.71	-883.25	-796.71	0.20	-0.02	8.86
6,677.00	1.02	315.59	6,497.45	-795.23	-884.36	-795.23	0.38	-0.24	-14.66
6,771.00	9.94	340.22	6,590.93	-786.98	-887.70	-786.98	9.60	9.49	26.20
6,866.00	16.68	349.57	6,683.34	-765.83	-892.95	-765.83	7.43	7.09	9.84
6,961.00	24.42	352.13	6,772.23	-732.92	-898.11	-732.92	8.20	8.15	2.69
7,055.00	31.23	0.27	6,855.34	-689.24	-900.66	-689.24	8.28	7.24	8.66
7,149.00	40.30	2.47	6,931.54	-634.38	-899.23	-634.38	9.74	9.65	2.34
7,244.00	48.13	1.61	6,999.58	-568.23	-896.91	-568.23	8.27	8.24	-0.91
7,339.00	55.76	0.91	7,058.09	-493.50	-895.29	-493.50	8.05	8.03	-0.74
7,433.00	64.51	4.16	7,104.86	-412.16	-891.59	-412.16	9.78	9.31	3.46
7,528.00	73.23	2.60	7,139.08	-323.79	-886.41	-323.79	9.31	9.18	-1.64
7,622.00	81.85	0.87	7,159.34	-232.13	-883.65	-232.13	9.34	9.17	-1.84
7,680.70	85.12	359.82	7,166.00	-173.82	-883.30	-173.82	5.85	5.58	-1.78
<b>LANDING POINT</b>									
7,695.04	85.92	359.57	7,167.12	-159.53	-883.38	-159.53	5.85	5.58	-1.77

<b>Company:</b>	US ROCKIES WATTENBERG PLANNING	<b>Local Co-ordinate Reference:</b>	Well BANE 28N2-9HZ
<b>Project:</b>	WELD-NAD83-UTMFT13N	<b>TVD Reference:</b>	GL 4964 & KB 25 @ 4989.00usft (HP 307)
<b>Site:</b>	1N-65W-09 Bane Pad	<b>MD Reference:</b>	GL 4964 & KB 25 @ 4989.00usft (HP 307)
<b>Well:</b>	BANE 28N2-9HZ	<b>North Reference:</b>	True
<b>Wellbore:</b>	Plan A	<b>Survey Calculation Method:</b>	Minimum Curvature
<b>Design:</b>	Plan A	<b>Database:</b>	Denver Sales Office

Survey									
Measured Depth (usft)	Inclination (°)	Azimuth (°)	Vertical Depth (usft)	+N-S (usft)	+E-W (usft)	Vertical Section (usft)	Dogleg Rate (°/100usft)	Build Rate (°/100usft)	Turn Rate (°/100usft)
ENTERED LAND BOX									
7,717.00	87.15	359.18	7,168.45	-137.61	-883.62	-137.61	5.85	5.58	-1.77
7,811.00	88.56	0.10	7,171.96	-43.68	-884.21	-43.68	1.79	1.50	0.98
7,906.00	90.84	1.75	7,172.46	51.30	-882.67	51.30	2.96	2.40	1.74
8,000.00	90.13	1.93	7,171.67	145.25	-879.66	145.25	0.78	-0.76	0.19
8,095.00	91.21	1.74	7,170.55	240.19	-876.61	240.19	1.15	1.14	-0.20
8,189.00	90.24	0.43	7,169.36	334.16	-874.83	334.16	1.73	-1.03	-1.39
8,283.00	88.96	359.67	7,170.02	428.16	-874.75	428.16	1.58	-1.36	-0.81
8,378.00	89.03	0.53	7,171.69	523.14	-874.59	523.14	0.91	0.07	0.91
8,473.00	91.21	0.97	7,171.49	618.13	-873.34	618.13	2.34	2.29	0.46
8,567.00	88.86	1.68	7,171.43	712.09	-871.17	712.09	2.61	-2.50	0.76
8,662.00	89.36	359.87	7,172.91	807.07	-869.88	807.07	1.98	0.53	-1.91
8,757.00	89.87	359.63	7,173.55	902.07	-870.30	902.07	0.59	0.54	-0.25
8,851.00	90.34	359.09	7,173.37	996.06	-871.35	996.06	0.76	0.50	-0.57
8,946.00	89.06	358.67	7,173.87	1,091.04	-873.21	1,091.04	1.42	-1.35	-0.44
9,040.00	88.66	357.86	7,175.74	1,184.98	-876.05	1,184.98	0.96	-0.43	-0.86
9,135.00	89.16	359.91	7,177.55	1,279.94	-877.90	1,279.94	2.22	0.53	2.16
9,229.00	90.84	0.32	7,177.55	1,373.93	-877.71	1,373.93	1.84	1.79	0.44
9,324.00	91.41	359.69	7,175.68	1,468.91	-877.70	1,468.91	0.89	0.60	-0.66
9,419.00	90.84	0.67	7,173.82	1,563.89	-877.40	1,563.89	1.19	-0.60	1.03
9,513.00	91.38	0.46	7,172.00	1,657.87	-876.48	1,657.87	0.62	0.57	-0.22
9,608.00	89.93	1.07	7,170.91	1,752.85	-875.21	1,752.85	1.66	-1.53	0.64
9,702.00	90.50	0.85	7,170.56	1,846.84	-873.63	1,846.84	0.65	0.61	-0.23
9,797.00	91.27	0.23	7,169.09	1,941.82	-872.74	1,941.82	1.04	0.81	-0.65
9,891.00	89.03	359.70	7,168.84	2,035.81	-872.80	2,035.81	2.45	-2.38	-0.56
9,986.00	89.06	359.17	7,170.43	2,130.80	-873.73	2,130.80	0.56	0.03	-0.56
10,080.00	88.36	357.93	7,172.54	2,224.74	-876.11	2,224.74	1.51	-0.74	-1.32
10,174.00	90.23	358.94	7,173.70	2,318.69	-878.68	2,318.69	2.26	1.99	1.07
10,269.00	90.97	358.26	7,172.71	2,413.66	-881.00	2,413.66	1.06	0.78	-0.72
10,364.00	90.40	359.57	7,171.57	2,508.63	-882.80	2,508.63	1.50	-0.60	1.38
10,458.00	91.37	359.96	7,170.12	2,602.62	-883.18	2,602.62	1.11	1.03	0.41
10,553.00	89.70	359.66	7,169.23	2,697.61	-883.50	2,697.61	1.79	-1.76	-0.32
10,647.00	90.07	359.71	7,169.42	2,791.61	-884.01	2,791.61	0.40	0.39	0.05
10,742.00	90.50	358.14	7,168.95	2,886.59	-885.80	2,886.59	1.71	0.45	-1.65
10,836.00	89.09	0.13	7,169.28	2,980.57	-887.22	2,980.57	2.59	-1.50	2.12
10,931.00	89.40	359.69	7,170.54	3,075.56	-887.36	3,075.56	0.57	0.33	-0.46
11,025.00	89.83	359.10	7,171.17	3,169.55	-888.36	3,169.55	0.78	0.46	-0.63
11,120.00	90.57	358.46	7,170.84	3,264.53	-890.38	3,264.53	1.03	0.78	-0.67
11,214.00	90.57	359.42	7,169.90	3,358.51	-892.12	3,358.51	1.02	0.00	1.02
11,309.00	89.83	1.63	7,169.57	3,453.50	-891.25	3,453.50	2.45	-0.78	2.33
11,403.00	89.57	1.43	7,170.06	3,547.46	-888.74	3,547.46	0.35	-0.28	-0.21
11,498.00	88.26	1.35	7,171.86	3,642.41	-886.43	3,642.41	1.38	-1.38	-0.08
11,593.00	89.53	1.29	7,173.69	3,737.37	-884.25	3,737.37	1.34	1.34	-0.06

<b>Company:</b>	US ROCKIES WATTENBERG PLANNING	<b>Local Co-ordinate Reference:</b>	Well BANE 28N2-9HZ
<b>Project:</b>	WELD-NAD83-UTMFT13N	<b>TVD Reference:</b>	GL 4964 & KB 25 @ 4989.00usft (HP 307)
<b>Site:</b>	1N-65W-09 Bane Pad	<b>MD Reference:</b>	GL 4964 & KB 25 @ 4989.00usft (HP 307)
<b>Well:</b>	BANE 28N2-9HZ	<b>North Reference:</b>	True
<b>Wellbore:</b>	Plan A	<b>Survey Calculation Method:</b>	Minimum Curvature
<b>Design:</b>	Plan A	<b>Database:</b>	Denver Sales Office

Survey										
Measured Depth (usft)	Inclination (°)	Azimuth (°)	Vertical Depth (usft)	+N/-S (usft)	+E/-W (usft)	Vertical Section (usft)	Dogleg Rate (°/100usft)	Build Rate (°/100usft)	Turn Rate (°/100usft)	
11,687.00	88.19	3.04	7,175.56	3,831.28	-880.70	3,831.28	2.34	-1.43	1.86	
11,782.00	88.16	2.70	7,178.59	3,926.11	-875.94	3,926.11	0.36	-0.03	-0.36	
11,876.00	89.20	1.96	7,180.75	4,020.00	-872.12	4,020.00	1.36	1.11	-0.79	
11,970.00	90.67	1.36	7,180.86	4,113.96	-869.40	4,113.96	1.69	1.56	-0.64	
12,000.00	90.77	0.64	7,180.48	4,143.96	-868.88	4,143.96	2.42	0.33	-2.40	
LAST SDI MWD PRODUCTION SURVEY										
12,058.00	90.77	0.64	7,179.70	4,201.95	-868.23	4,201.95	0.00	0.00	0.00	
SDI PROJECTION TO TD										

Casing Points					
Measured Depth (usft)	Vertical Depth (usft)	Name	Casing Diameter (in)	Hole Diameter (in)	
1,590.00	1,563.28	9 5/8"	9.625	13.500	

Design Annotations					
Measured Depth (usft)	Vertical Depth (usft)	Local Coordinates			
		+N/-S (usft)	+E/-W (usft)	Comment	
7,680.70	7,166.00	-173.82	-883.30	LANDING POINT	
7,695.04	7,167.12	-159.53	-883.38	ENTERED LAND BOX	
12,000.00	7,180.48	4,143.96	-868.88	LAST SDI MWD PRODUCTION SURVEY	
12,058.00	7,179.70	4,201.95	-868.23	SDI PROJECTION TO TD	

Checked By: \_\_\_\_\_ Approved By: \_\_\_\_\_ Date: \_\_\_\_\_