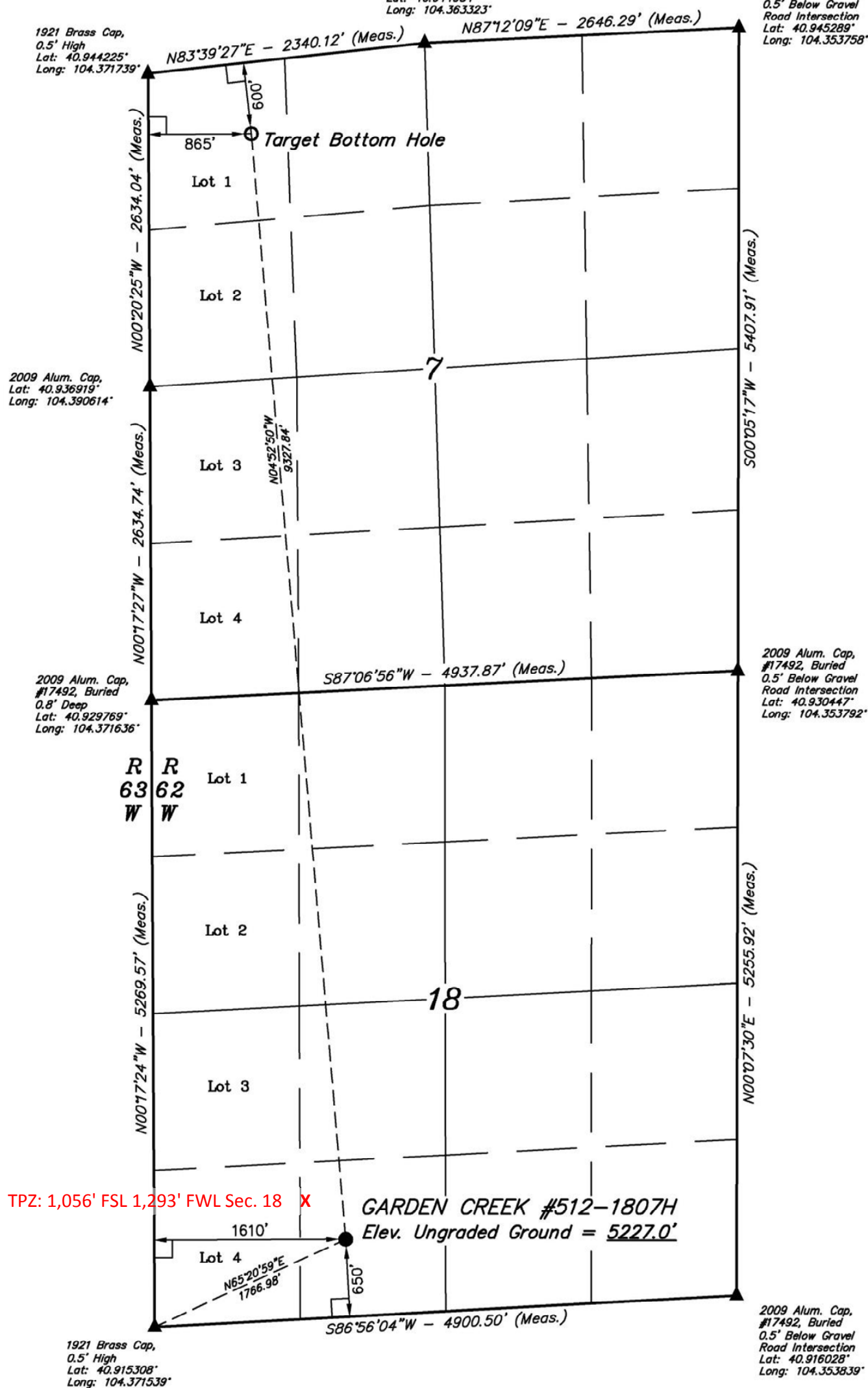


L = 90° SYMBOL
 ● = PROPOSED WELLHEAD.
 ○ = TARGET BOTTOM HOLE.
 ▲ = SECTION CORNERS
 LOCATED.

2014 Alum. Cap,
PLS #28285,
0.5' High
Lat: 40.944934°
Long: 104.363323°

2009 Alum. Cap,
#17492, Buried
0.5' Below Gravel
Road Intersection
Lat: 40.945289°
Long: 104.353758°



TPZ: 1,056' FSL 1,293' FWL Sec. 18 X

GARDEN CREEK #512-1807H
Elev. Ungraded Ground = 5227.0'

2009 Alum. Cap.
#17492, Buried
0.5' Below Gravel
Road Intersection
Lat: 40.916028°
Long: 104.353839°

PDOP = 1.7



NAD 83 (TARGET BOTTOM HOLE)	NAD 83 (SURFACE LOCATION)
LATITUDE = 40°56'34.20" (40.942833)	LATITUDE = 40°55'02.39" (40.917331)
LONGITUDE = 104°22'06.95" (104.368597)	LONGITUDE = 104°21'56.63" (104.365731)
NAD 27 (TARGET BOTTOM HOLE)	NAD 27 (SURFACE LOCATION)
LATITUDE = 40°56'34.26" (40.942850)	LATITUDE = 40°55'02.45" (40.917347)
LONGITUDE = 104°22'05.12" (104.368089)	LONGITUDE = 104°21'54.79" (104.365219)
STATE PLANE NAD 83 (CO. NORTH)	STATE PLANE NAD 83 (CO. NORTH)
N: 1588321.83 E: 3312575.30	N: 1579040.76 E: 3313486.69
STATE PLANE NAD 27 (CO. NORTH)	STATE PLANE NAD 27 (CO. NORTH)
N: 588319.61 E: 2312724.68	N: 579038.71 E: 2313636.00

CERTIFICATE

THIS IS TO CERTIFY THAT THE ABOVE PLAN WAS PREPARED FROM FIELD NOTES OF ACTUAL SURVEYS MADE BY ME OR UNDER MY SUPERVISION AND THAT THE SAME ARE TRUE AND CORRECT TO THE BEST OF MY KNOWLEDGE AND BELIEF.

REGISTERED LAND SURVEYOR
REGISTRATION NO. 28285
STATE OF COLORADO

BASIS OF BEARINGS

BASIS OF BEARINGS IS A G.P.S. OBSERVATION

BASIS OF ELEVATION
SPOT ELEVATION LOCATED AT THE NORTHEAST CORNER OF SECTION 1, T11N, R63W, 6th
P.M. TAKEN FROM THE HERFORD, QUADRANGLE, COLORADO, WELD COUNTY, 7.5
MINUTE QUAD (TOPOGRAPHIC MAP) PUBLISHED BY THE UNITED STATES DEPARTMENT OF
THE INTERIOR, GEOLOGICAL SURVEY. SAID ELEVATION IS MARKED AS BEING 5352 FEET.

EOG RESOURCES, INC.

**GARDEN CREEK #512-1807H
SE 1/4 SW 1/4, SECTION 18, T11N, R62W, 6th P.M.
WELD COUNTY, COLORADO**

SURVEYED BY: GREG WEIMER, C.J.	DATE: 04-29-15
DRAWN BY: C.D.L.	DATE DRAWN: 05-04-15
SCALE: 1" = 1000'	REVISED: 00-00-00

WELL LOCATION PLAT



UELS, LLC
Corporate Office * 85 South 200 East
Vernal, UT 84078 * (435) 789-1017

