

LEGEND:

 **PROPOSED LOCATION**



UELS, LLC
Corporate Office * 85 South 200 East
Vernal, UT 84078 * (435) 789-1017



ConocoPhillips Company

PROSPER FARMS #4-65 2-1 4CH, 4AH, 3DH & 3CH
W 1/2 SW 1/4, SECTION 2, T4S, R65W, 6th P.M.
ARAPAHOE COUNTY, COLORADO

DRAWN BY: J.L.G.

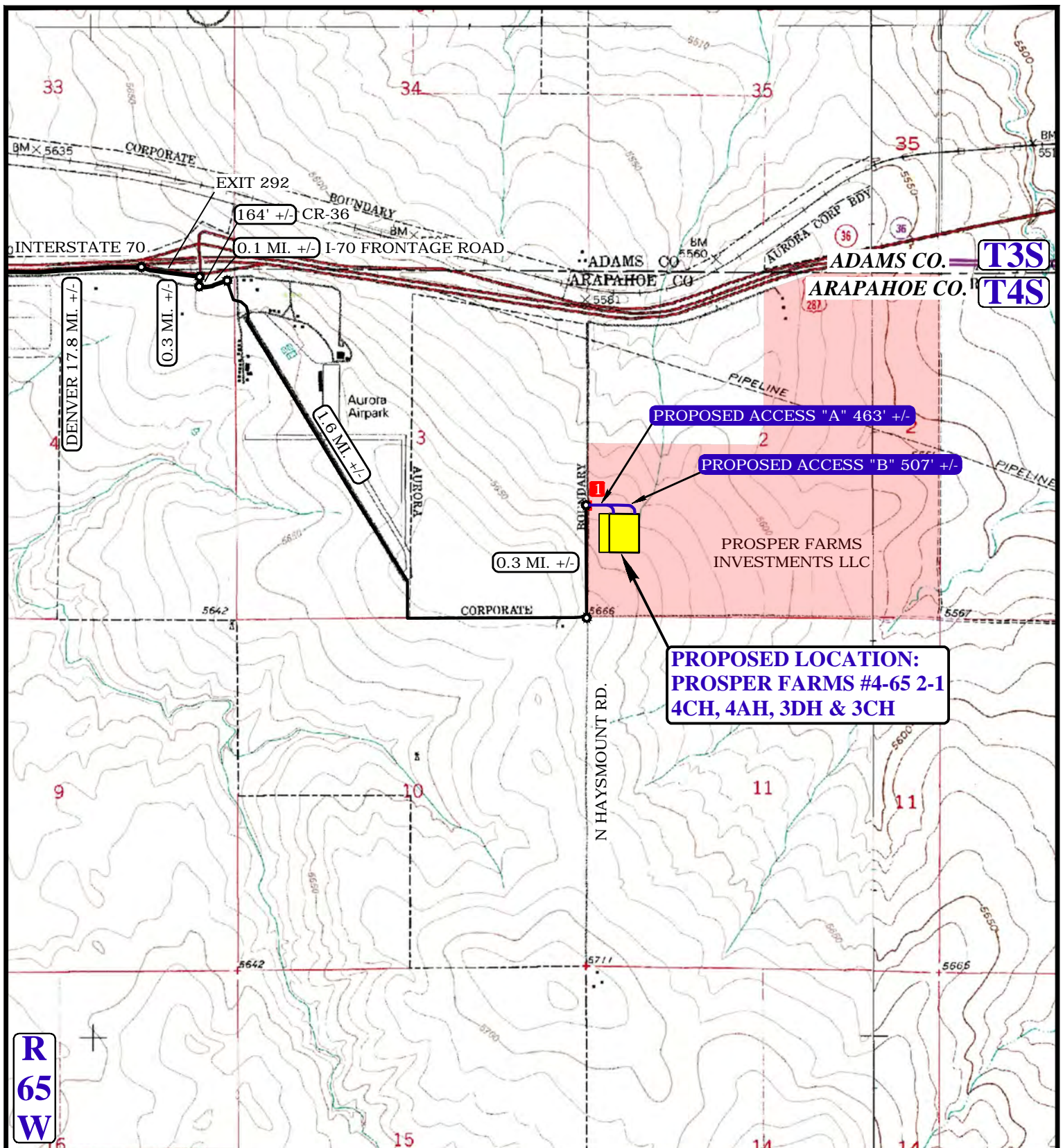
DATE DRAWN: 06-16-15

SCALE: 1:100,000

REVISED: 09-03-15

ACCESS ROAD MAP

TOPO A



NOTE: PARCEL DATA SHOWN HAS BEEN OBTAINED FROM VARIOUS SOURCES AND SHOULD BE USED FOR MAPPING, GRAPHIC AND PLANNING PURPOSES ONLY. NO WARRANTY IS MADE BY UINTAH ENGINEERING AND LAND SURVEYING (UELS) FOR ACCURACY OF THE PARCEL DATA.

LEGEND:

- EXISTING ROAD
- PROPOSED ROAD
- INSTALL 18" CULVERT



UELS, LLC
Corporate Office * 85 South 200 East
Vernal, UT 84078 * (435) 789-1017



ConocoPhillips Company	
PROSPER FARMS #4-65 2-1 4CH, 4AH, 3DH & 3CH	
W 1/2 SW 1/4, SECTION 2, T4S, R65W, 6th P.M.	
ARAPAHOE COUNTY, COLORADO	
DRAWN BY: J.L.G.	DATE DRAWN: 06-16-15
SCALE: 1"=2000'	REVISED: 09-03-15
ACCESS ROAD MAP	TOPO B