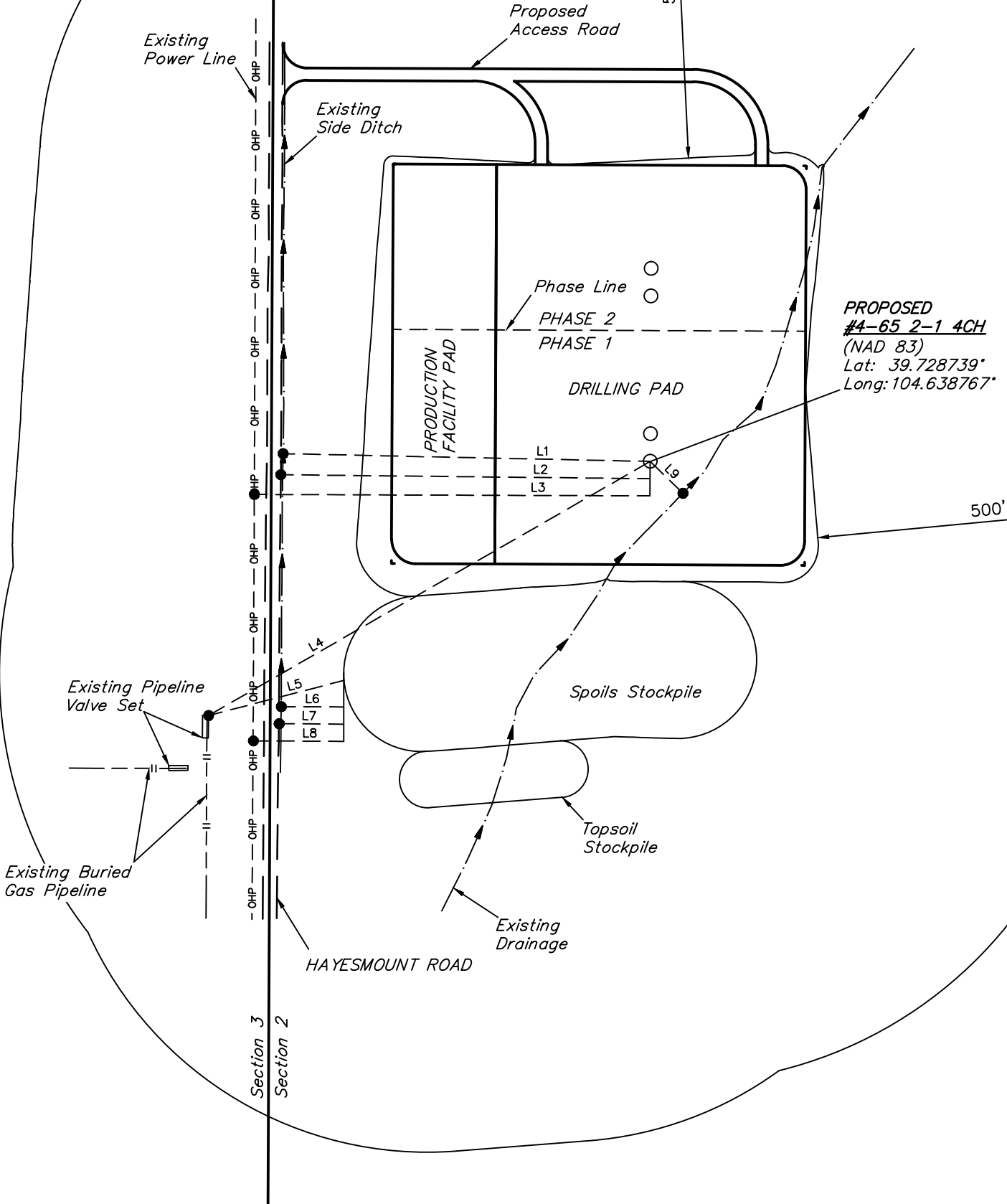


LINE TABLE		
LINE	DIRECTION	LENGTH
L1	N89°W	533'
L2	N89°W	536'
L3	WEST	575'
L4	S60°W	740'
L5	S75°W	203'
L6	WEST	91'
L7	WEST	94'
L8	WEST	131'
L9	S46°E	66'



500' Offset
from Edge of
Disturbance



PLANT COMMUNITY

- ☐ DISTURBED GRASSLAND
- ☐ NATIVE GRASSLAND
- ☐ SHRUB LAND
- ☐ PLAINS RIPARIAN
- ☐ MOUNTAIN RIPARIAN
- ☐ FOREST LAND
- ☐ WETLANDS AQUATIC
- ☐ ALPINE
- ☒ OTHER (Describe): CORN FIELD

CURRENT LAND USE

- CROP LAND:

NON-CROP LAND:

SUBDIVIDED:
- ☐ IRRIGATED

☐ RANGELAND

☐ INDUSTRIAL
- ☒ DRY LAND

☐ TIMBER

☐ COMMERCIAL
- ☐ IMPROVED PASTURE

☐ RECREATIONAL

☐ RESIDENTIAL
- ☐ HAY MEADOW

☐ OTHER (Describe)
- ☐ CRP

FUTURE LAND USE

- CROP LAND:

NON-CROP LAND:

SUBDIVIDED:
- ☐ IRRIGATED

☐ RANGELAND

☐ INDUSTRIAL
- ☒ DRY LAND

☐ TIMBER

☐ COMMERCIAL
- ☐ IMPROVED PASTURE

☐ RECREATIONAL

☐ RESIDENTIAL
- ☐ HAY MEADOW

☐ OTHER (Describe)
- ☐ CRP

ConocoPhillips Company

PROSPER FARMS #4-65 2-1 4CH, 4AH, 3DH & 3CH
W 1/2 SW 1/4, SECTION 2, T4S, R65W, 6th P.M.
ARAPAHOE COUNTY, COLORADO



UELS, LLC
Corporate Office * 85 South 200 East
Vernal, UT 84078 * (435) 789-1017

SURVEYED BY: DALLAS NIELSEN, B.C.	SURVEY DATE: 06-11-15
DRAWN BY: K.B.	DATE DRAWN: 06-12-15
SCALE: 1" = 200'	REVISED: 09-03-15

LOCATION DRAWING

FIGURE #3