

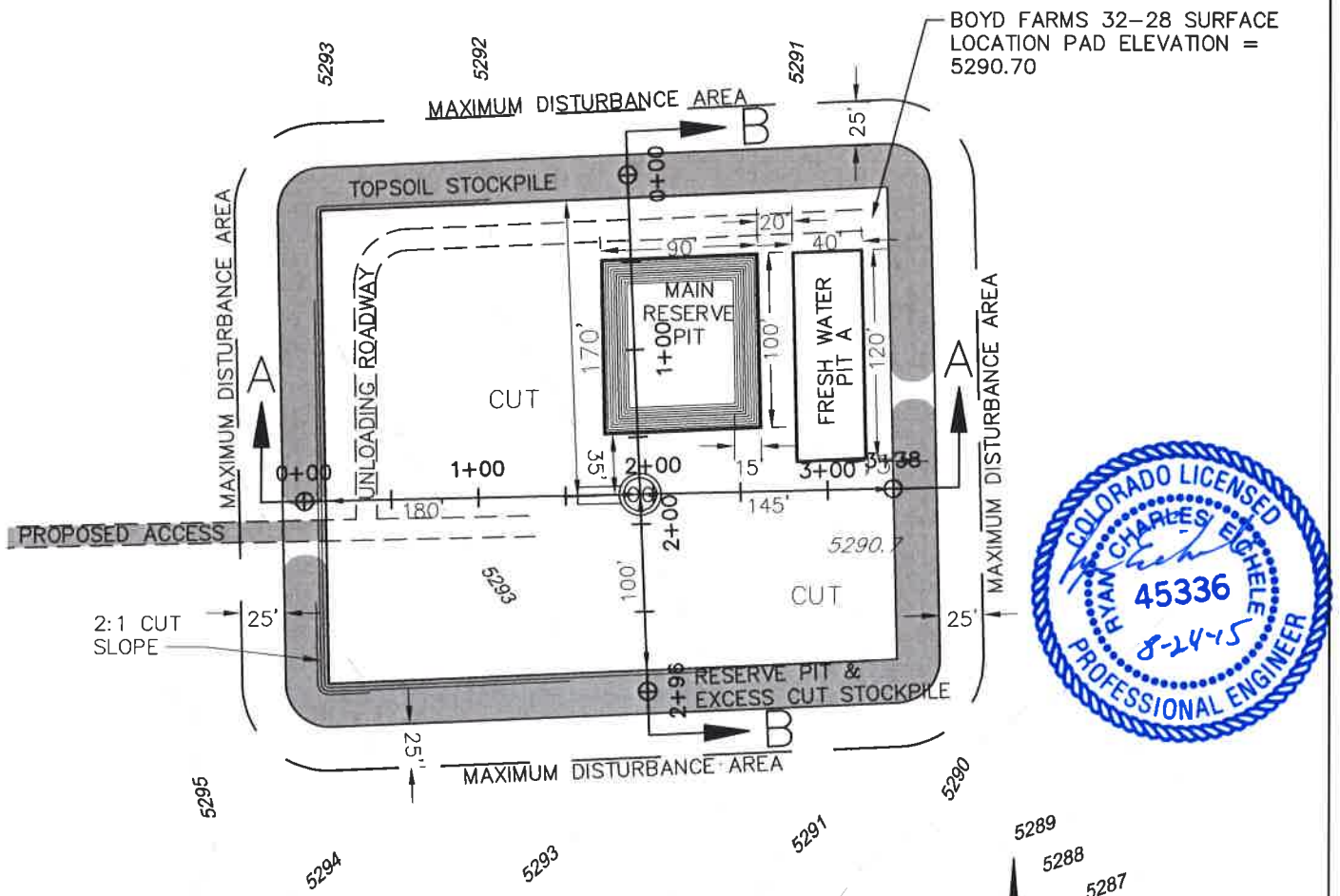
Site Layout BOYD FARMS 32-28

Frane Surveying of Elizabeth, Colorado, in accordance with a request from **Duncan Oil Inc.**, has determined the location of **BOYD FARMS 32-28** to be **2450 feet FNL**, and **2200 feet FEL** (90° off Section lines) of Section **28**, Township **6s**, Range **54w** of the 6th Principal Meridian, **Lincoln County**, Colorado.

Date: Staked on 08/13/15 drawn on 08/17/15.

Re: Staked by Elijah Frane

Drawn: Drawn by Elijah Frane



EARTHWORK VOLUME SUMMARY (CY)				
	CUT	FILL	5% COMPACTION	EXCESS
6" TOPSOIL	1625			
PAD	4412			
MAIN RESERVE PIT	2389			
FRESH WATER PIT A	1376			
TOTAL	9802			9802