



September 14, 2015

VIA ELECTRONIC TRANSMITTAL

Director Matt Lepore
Colorado Oil and Gas Conservation Commission
1120 Lincoln Street Suite 801
Denver, Colorado 80203

RE: Rule 318.A.e.
CS-LONGMEADOW 1-1-13
CS-LONGMEADOW 2-1-13

Surface Location: SWSE, Section 36, Township 6 North, Range 66 West, Weld County, CO
Dear Mr. Lepore,

Extraction Oil and Gas is planning to drill the captioned horizontal wells in accordance with the provision of COGCC Rule 318A.e.

The proposed wellbore spacing unit consists of:

Sec.1-5N-66W: E/2E/2
Sec.12-5N-66W: E/2E/2
Sec.13-5N-66W: E/2NE/4
Sec.6-5N-65W:W/2W/2
Sec.7-5N-65W:W/2W/2
Sec.18-5N-65W:W/2NW/4

The spacing unit is a 800-acre wellbore spacing unit for the Niobrara formation.

Extraction Oil and Gas hereby certifies to the Director that all Owners within the proposed spacing unit above were notified and 30 days have passed without objection.

If you have any questions or issues regarding this permit, please contact Alyssa Andrews at 720-420-5749.

Respectfully,

Alyssa Andrews
Agent for Extraction Oil and Gas

P:\Engineering\0210012 MRI C Street\DRAWINGS\EXHIBITS\0210012PSUE-LONGMEADOW.dwg, 6/14/2015 2:01:57 PM, KELVIN WIESE, LAMP RYNEARSON & ASSOCIATES

NAME: LONGMEADOW

SPACING UNIT: W/2 W/2 SEC 6, W/2 W2 SEC 7, W/2 NW/4 SEC 18 T5N, R65W; & E/2 E/2 SEC 1, E/2 E/2 SEC 12 E/2 NE/4 SEC 13, T5N, R66W

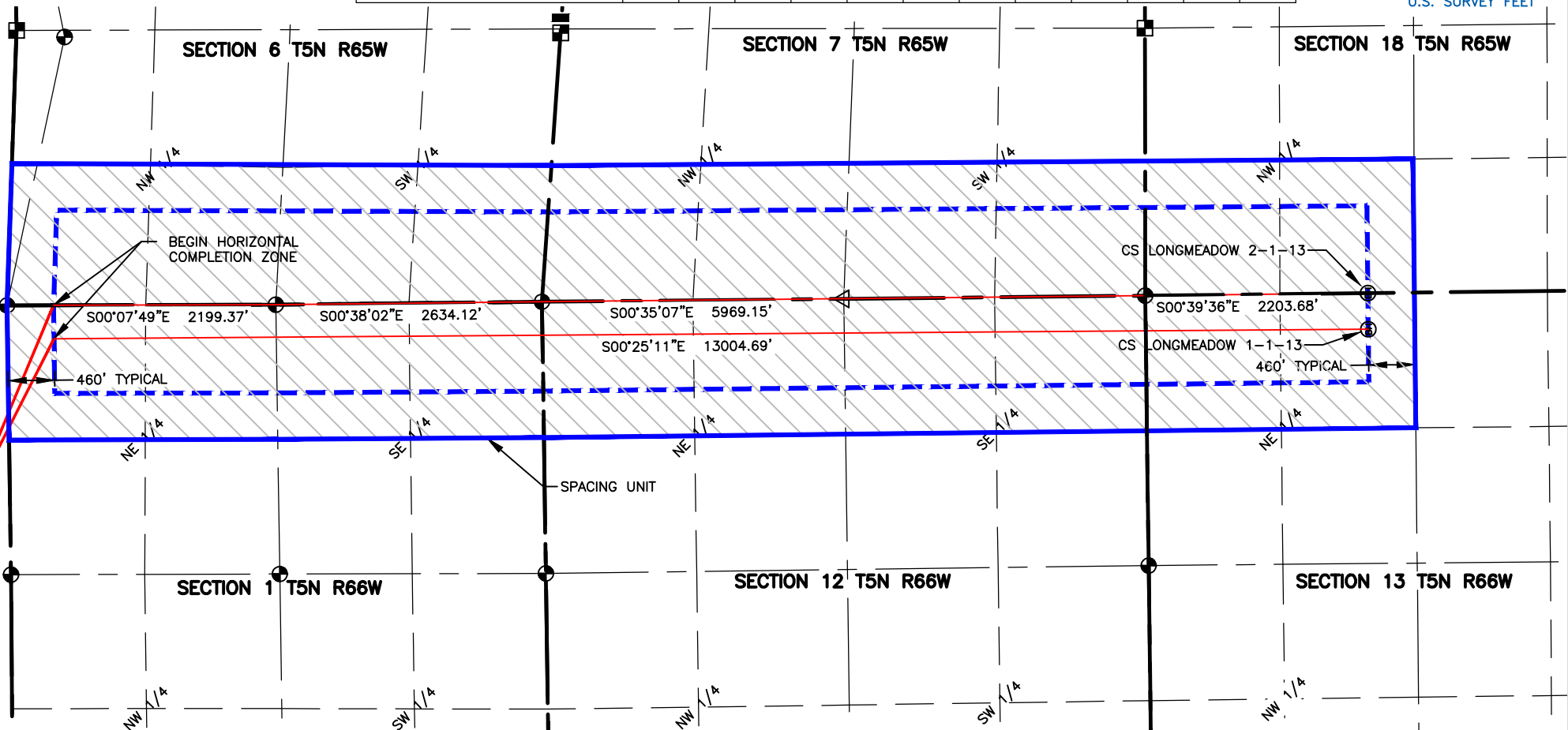
UNIT ACREAGE: 800

WELL NAME	SURFACE LOCATION				BEGIN HORIZONTAL COMPLETION ZONE				END HORIZONTAL COMPLETION ZONE			
	DIST.	DIR.	DIST.	DIR.	DIST.	DIR.	DIST.	DIR.	DIST.	DIR.	DIST.	DIR.
CS-LONGMEADOW 2-1-13	338'	FSL	1824'	FEL	460'	FNL	0'	FEL	2204'	FNL	0'	FEL
CS-LONGMEADOW 1-1-13	338'	FSL	1840'	FEL	460'	FNL	333'	FEL	2203'	FNL	358'	FEL



0 1500

SCALE: 1"= 1500'
U.S. SURVEY FEET



LAMP RYNEARSON
& ASSOCIATES

4715 Innovation Drive 970.226.0342 | P
Fort Collins, CO 80525 970.226.0879 | F
www.LRA-Inc.com

Planned Spacing Exhibit
C Street Directional Project
Longmeadow

LEGEND

- ALLOT CORNER
- BOTTOM HOLE
- COMPUTED FROM GLO RECORDS
- SECTION LINE
- QUARTER SECTION LINE
- SIXTEENTH LINE
- UNION COLONY CORNER
- COMPUTED ALLOT CORNER FROM MONUMENT ACCESSORIES

drawn by

KJW

date

6/14/15

cogcc id

430474

project - task number

0210012.00-502

book and page

surface - location

SW/4 SE/4 SEC 36 T6N R66W

path/filename P:\Engineering\0210012 MRI C Street\DRAWINGS\EXHIBITS\0210012PSUE-LONGMEADOW.dwg