

EXTRACTION OIL & GAS

WELD COUNTY, COLORADO (NAD 83)

SW SE SEC 36 T6N R66W 6th P.M.

CS-LONGMEADOW 2-1-13

ORIGINAL WELLBORE

26 June, 2015

Plan: PROPOSAL #1





Project: WELD COUNTY, COLORADO (NAD 83)
Site: SW SE SEC 36 T6N R66W 6th P.M.
Well: CS-LONGMEADOW 2-1-13
Wellbore: ORIGINAL WELLBORE
Design: PROPOSAL #1

ANNOTATIONS

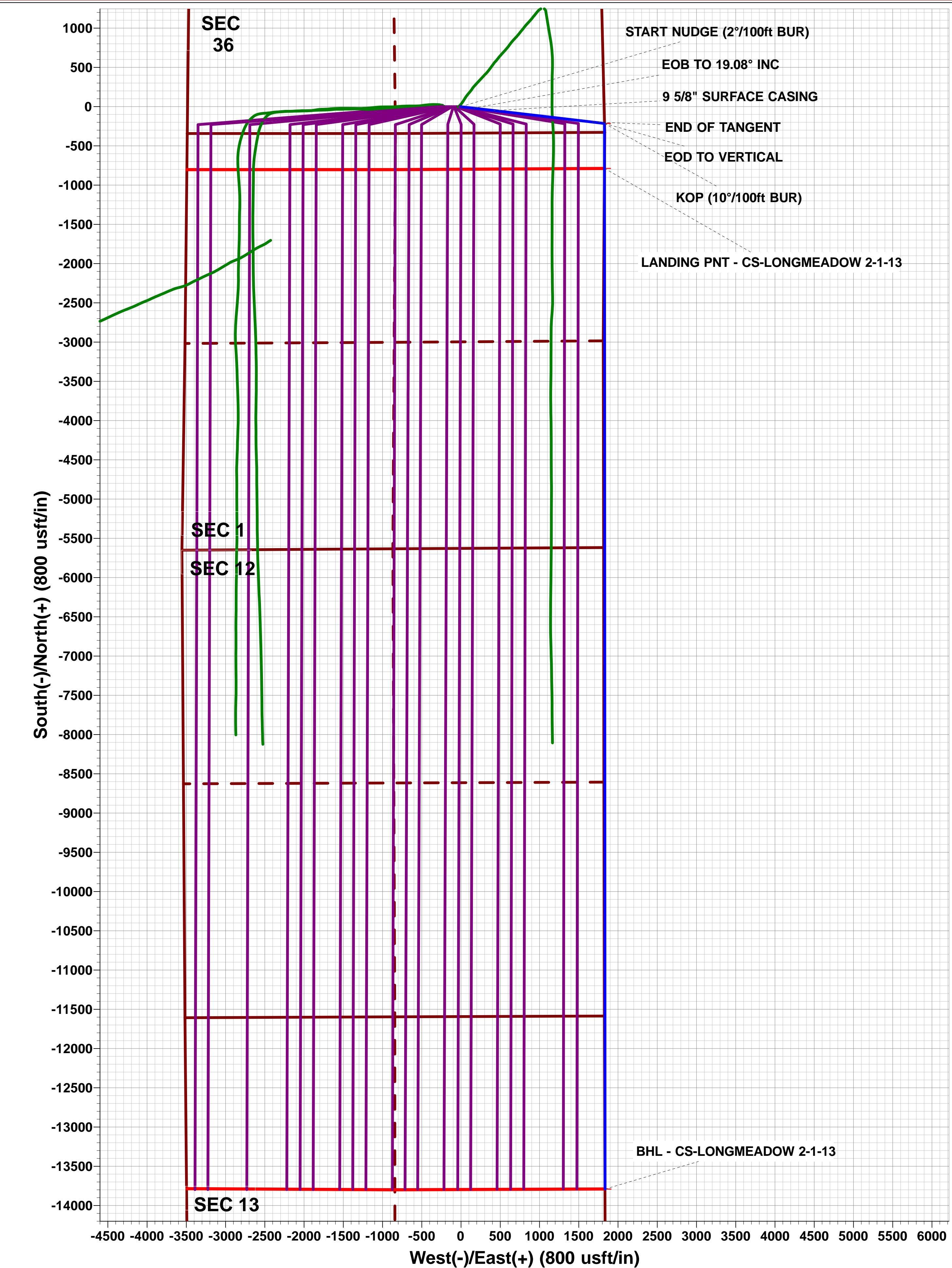
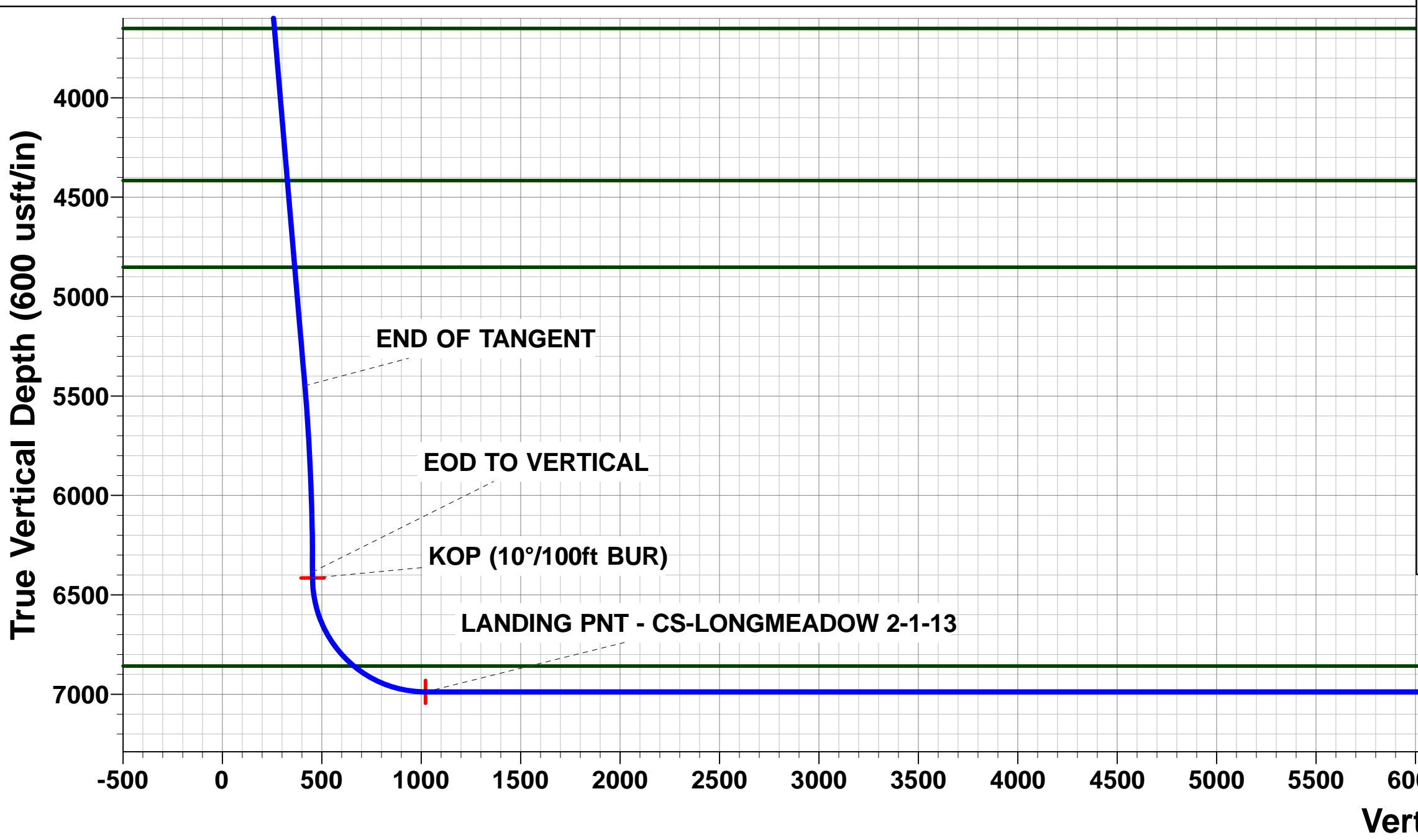
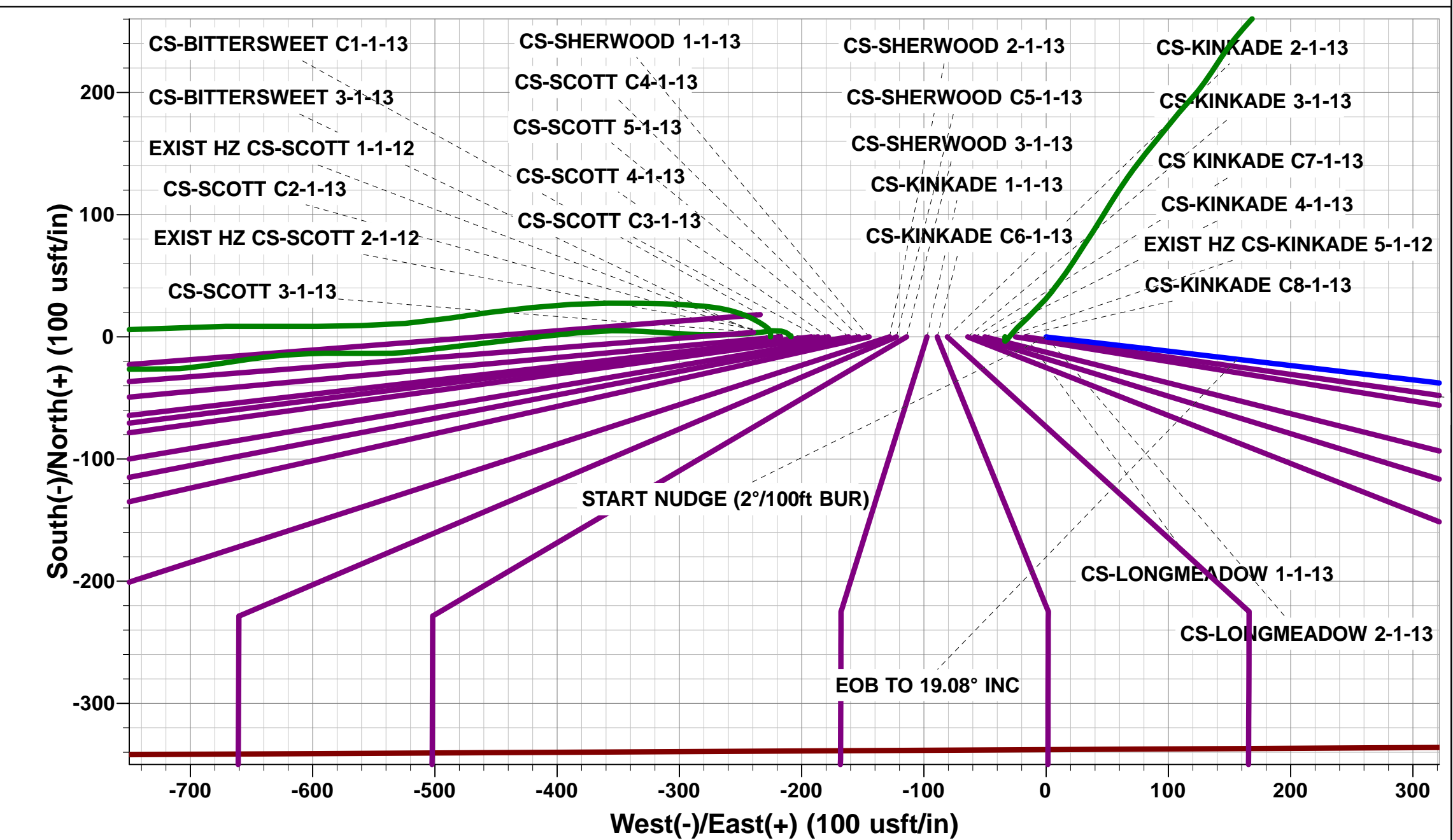
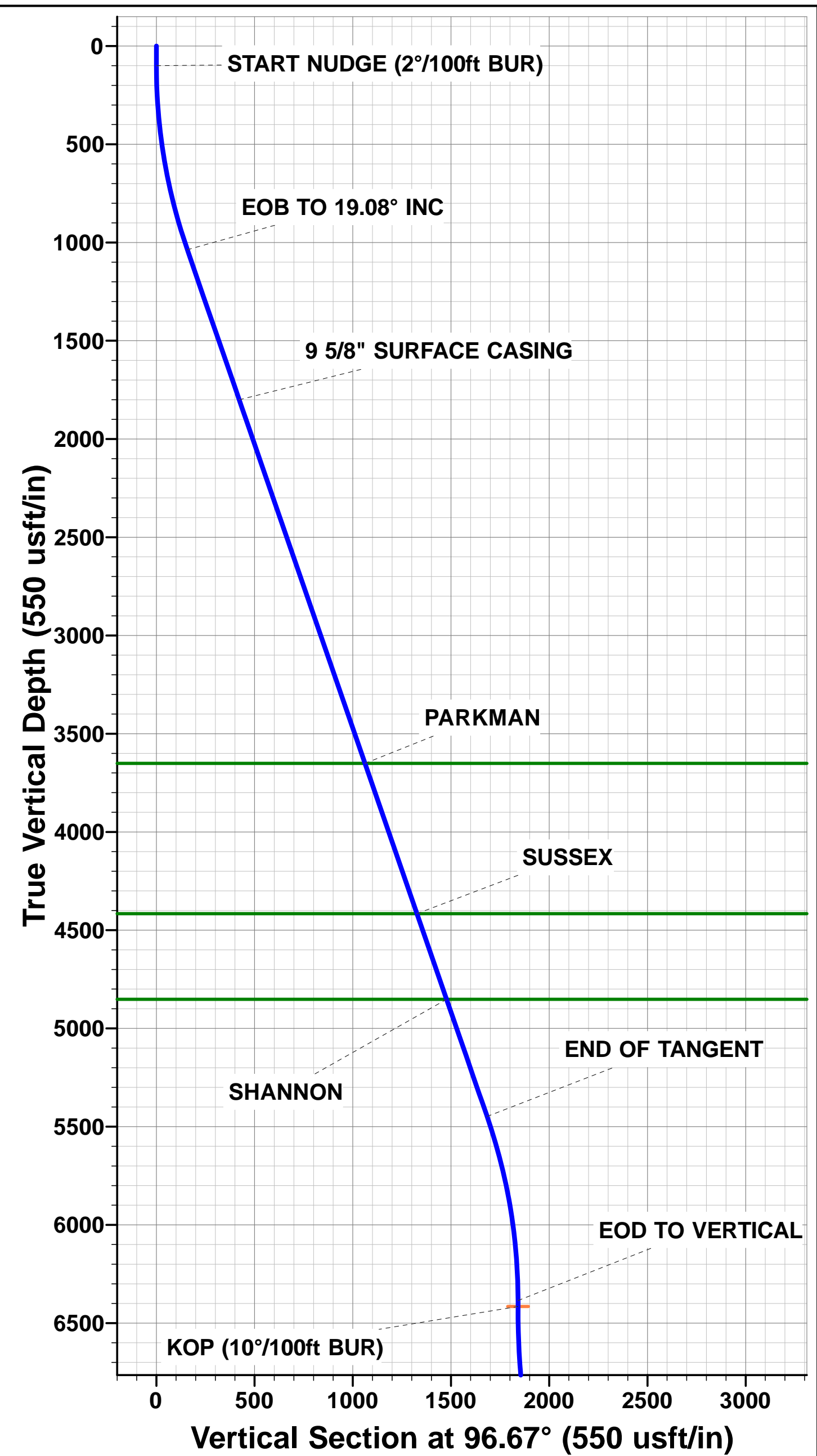
TVD	MD	Inc	Azi	+N/-S	+E/-W	VSec	Dep	Annotation
100.0	100.0	0.00	0.00	0.0	0.0	0.0	0.0	START NUDGE (2°/100ft BUR)
1036.6	1054.1	19.08	96.67	-18.3	156.4	38.8	157.4	EOB TO 19.08° INC
1800.0	1861.9	19.08	96.67	-48.9	418.7	103.8	421.5	9 5/8" SURFACE CASING
5448.4	5722.5	19.08	96.67	-195.5	1672.2	414.4	1683.6	END OF TANGENT
6385.0	6676.6	0.00	0.00	-213.8	1828.6	453.2	1841.1	EOD TO VERTICAL
6415.0	6706.6	0.00	0.00	-213.8	1828.6	453.2	1841.1	KOP (10°/100ft BUR)
6988.0	7606.7	90.00	179.97	-786.8	1828.9	1021.3	2414.1	LANDING PNT - CS-LONGMEADOW 2-1-13
6988.0	20609.0	90.00	179.97	-13789.1	1835.4	13910.8	15416.4	BHL - CS-LONGMEADOW 2-1-13

PROPOSED LOCAL COORDINATES:

SHL: 338ft FSL & 1824ft FEL Sec 36
LANDING PNT: 460ft FNL & 0ft FEL Sec 1
BHL: 2204ft FNL & 0ft FEL Sec 13

WELLBORE TARGET DETAILS (LAT/LONG)

Name	TVD	+N/-S	+E/-W	Latitude	Longitude
KOP - CS-LONGMEADOW 2-1-13	6415.0	-213.8	1828.6	40.437783	-104.715851
BHL - CS-LONGMEADOW 2-1-13	6988.0	-13789.1	1835.4	40.400520	-104.715830
LANDING PNT - CS-LONGMEADOW 2-1-13	6988.0	-786.8	1828.9	40.436210	-104.715850



Planning Report



Database:	EDM 5000.1 Single User Db	Local Co-ordinate Reference:	Well CS-LONGMEADOW 2-1-13
Company:	EXTRACTION OIL & GAS	TVD Reference:	KB-EST @ 4679.0usft (SAV 802)
Project:	WELD COUNTY, COLORADO (NAD 83)	MD Reference:	KB-EST @ 4679.0usft (SAV 802)
Site:	SW SE SEC 36 T6N R66W 6th P.M.	North Reference:	True
Well:	CS-LONGMEADOW 2-1-13	Survey Calculation Method:	Minimum Curvature
Wellbore:	ORIGINAL WELLBORE		
Design:	PROPOSAL #1		

Project	WELD COUNTY, COLORADO (NAD 83)		
Map System:	US State Plane 1983	System Datum:	Mean Sea Level
Geo Datum:	North American Datum 1983		
Map Zone:	Colorado Northern Zone		Using geodetic scale factor

Site	SW SE SEC 36 T6N R66W 6th P.M.		
Site Position:		Northing:	1,403,485.52 usft
From:	Lat/Long	Easting:	3,216,213.28 usft
Position Uncertainty:	0.0 usft	Slot Radius:	1.10000ft
		Latitude:	40.438370
		Longitude:	-104.723230
		Grid Convergence:	0.50 °

Well	CS-LONGMEADOW 2-1-13		
Well Position	+N/-S	0.0 usft	Northing:
	+E/-W	225.5 usft	Easting:
Position Uncertainty	0.0 usft		Wellhead Elevation:
			Latitude:
			Longitude:
			Ground Level:

Wellbore	ORIGINAL WELLBORE				
Magnetics	Model Name	Sample Date	Declination (°)	Dip Angle (°)	Field Strength (nT)
	IGRF2015	23/06/2015	8.40	66.94	52,645

Design	PROPOSAL #1			
Audit Notes:				
Version:	Phase:	PROTOTYPE	Tie On Depth:	0.0
Vertical Section:	Depth From (TVD) (usft)	+N/-S (usft)	+E/-W (usft)	Direction (°)
	0.0	0.0	0.0	172.42

Plan Sections											
MD (usft)	Inc (°)	Azi (°)	Vertical Depth	SS (usft)	+N/-S (usft)	+E/-W (usft)	Dogleg Rate (°/100usf)	Build Rate (°/100usf)	Turn Rate (°/100usf)	TFO (°)	Target
0.0	0.00	0.00	0.0	-4,679.0	0.0	0.0	0.00	0.00	0.00	0.00	
100.0	0.00	0.00	100.0	-4,579.0	0.0	0.0	0.00	0.00	0.00	0.00	
1,054.1	19.08	96.67	1,036.6	-3,642.4	-18.3	156.4	2.00	2.00	0.00	96.67	
5,722.5	19.08	96.67	5,448.4	769.4	-195.5	1,672.2	0.00	0.00	0.00	0.00	
6,676.6	0.00	0.00	6,385.0	1,706.0	-213.8	1,828.6	2.00	-2.00	0.00	180.00	
6,706.6	0.00	0.00	6,415.0	1,736.0	-213.8	1,828.6	0.00	0.00	0.00	0.00	KOP - CS-LONGME
7,606.7	90.00	179.97	6,988.0	2,309.0	-786.8	1,828.9	10.00	10.00	19.99	179.97	LANDING PNT - CS
20,609.0	90.00	179.97	6,988.0	2,309.0	-13,789.1	1,835.4	0.00	0.00	0.00	158.02	BHL - CS-LONGME

Planning Report



Database:	EDM 5000.1 Single User Db	Local Co-ordinate Reference:	Well CS-LONGMEADOW 2-1-13
Company:	EXTRACTION OIL & GAS	TVD Reference:	KB-EST @ 4679.0usft (SAV 802)
Project:	WELD COUNTY, COLORADO (NAD 83)	MD Reference:	KB-EST @ 4679.0usft (SAV 802)
Site:	SW SE SEC 36 T6N R66W 6th P.M.	North Reference:	True
Well:	CS-LONGMEADOW 2-1-13	Survey Calculation Method:	Minimum Curvature
Wellbore:	ORIGINAL WELLBORE		
Design:	PROPOSAL #1		

Planned Survey										
MD (usft)	Inc (°)	Azi (°)	TVD (usft)	SS (usft)	+N/-S (usft)	+E/-W (usft)	Vertical Section (usft)	Dogleg Rate (°/100usft)	Build Rate (°/100usft)	Turn Rate (°/100usft)
0.0	0.00	0.00	0.0	4,679.00	0.0	0.0	0.0	0.00	0.00	0.00
START NUDGE (2°/100ft BUR)										
100.0	0.00	0.00	100.0	4,579.00	0.0	0.0	0.0	0.00	0.00	0.00
200.0	2.00	96.67	200.0	4,479.02	-0.2	1.7	0.4	2.00	2.00	0.00
300.0	4.00	96.67	299.8	4,379.16	-0.8	6.9	1.7	2.00	2.00	0.00
400.0	6.00	96.67	399.5	4,279.55	-1.8	15.6	3.9	2.00	2.00	0.00
500.0	8.00	96.67	498.7	4,180.30	-3.2	27.7	6.9	2.00	2.00	0.00
600.0	10.00	96.67	597.5	4,081.53	-5.1	43.2	10.7	2.00	2.00	0.00
700.0	12.00	96.67	695.6	3,983.38	-7.3	62.2	15.4	2.00	2.00	0.00
800.0	14.00	96.67	793.1	3,885.94	-9.9	84.5	20.9	2.00	2.00	0.00
900.0	16.00	96.67	889.6	3,789.36	-12.9	110.2	27.3	2.00	2.00	0.00
1,000.0	18.00	96.67	985.3	3,693.73	-16.3	139.3	34.5	2.00	2.00	0.00
EOB TO 19.08° INC										
1,054.1	19.08	96.67	1,036.6	3,642.43	-18.3	156.4	38.8	2.00	2.00	0.00
1,100.0	19.08	96.67	1,079.9	3,599.06	-20.0	171.3	42.4	0.00	0.00	0.00
1,200.0	19.08	96.67	1,174.4	3,504.56	-23.8	203.7	50.5	0.00	0.00	0.00
1,300.0	19.08	96.67	1,268.9	3,410.05	-27.6	236.2	58.5	0.00	0.00	0.00
1,400.0	19.08	96.67	1,363.5	3,315.55	-31.4	268.7	66.6	0.00	0.00	0.00
1,500.0	19.08	96.67	1,458.0	3,221.04	-35.2	301.1	74.6	0.00	0.00	0.00
1,600.0	19.08	96.67	1,552.5	3,126.54	-39.0	333.6	82.7	0.00	0.00	0.00
1,700.0	19.08	96.67	1,647.0	3,032.03	-42.8	366.1	90.7	0.00	0.00	0.00
1,800.0	19.08	96.67	1,741.5	2,937.53	-46.6	398.6	98.8	0.00	0.00	0.00
9 5/8" SURFACE CASING										
1,861.9	19.08	96.67	1,800.0	2,879.00	-48.9	418.7	103.8	0.00	0.00	0.00
1,900.0	19.08	96.67	1,836.0	2,843.02	-50.4	431.0	106.8	0.00	0.00	0.00
2,000.0	19.08	96.67	1,930.5	2,748.52	-54.2	463.5	114.9	0.00	0.00	0.00
2,100.0	19.08	96.67	2,025.0	2,654.01	-58.0	496.0	122.9	0.00	0.00	0.00
2,200.0	19.08	96.67	2,119.5	2,559.51	-61.8	528.4	131.0	0.00	0.00	0.00
2,300.0	19.08	96.67	2,214.0	2,465.00	-65.6	560.9	139.0	0.00	0.00	0.00
2,400.0	19.08	96.67	2,308.5	2,370.50	-69.4	593.4	147.1	0.00	0.00	0.00
2,500.0	19.08	96.67	2,403.0	2,275.99	-73.2	625.9	155.1	0.00	0.00	0.00
2,600.0	19.08	96.67	2,497.5	2,181.49	-77.0	658.3	163.2	0.00	0.00	0.00
2,700.0	19.08	96.67	2,592.0	2,086.98	-80.8	690.8	171.2	0.00	0.00	0.00
2,800.0	19.08	96.67	2,686.5	1,992.48	-84.6	723.3	179.3	0.00	0.00	0.00
2,900.0	19.08	96.67	2,781.0	1,897.97	-88.4	755.7	187.3	0.00	0.00	0.00
3,000.0	19.08	96.67	2,875.5	1,803.47	-92.2	788.2	195.3	0.00	0.00	0.00
3,100.0	19.08	96.67	2,970.0	1,708.96	-96.0	820.7	203.4	0.00	0.00	0.00
3,200.0	19.08	96.67	3,064.5	1,614.46	-99.7	853.2	211.4	0.00	0.00	0.00
3,300.0	19.08	96.67	3,159.0	1,519.95	-103.5	885.6	219.5	0.00	0.00	0.00
3,400.0	19.08	96.67	3,253.6	1,425.45	-107.3	918.1	227.5	0.00	0.00	0.00
3,500.0	19.08	96.67	3,348.1	1,330.94	-111.1	950.6	235.6	0.00	0.00	0.00
3,600.0	19.08	96.67	3,442.6	1,236.44	-114.9	983.0	243.6	0.00	0.00	0.00
3,700.0	19.08	96.67	3,537.1	1,141.93	-118.7	1,015.5	251.7	0.00	0.00	0.00
3,800.0	19.08	96.67	3,631.6	1,047.43	-122.5	1,048.0	259.7	0.00	0.00	0.00
PARKMAN										
3,820.6	19.08	96.67	3,651.0	1,028.00	-123.3	1,054.7	261.4	0.00	0.00	0.00
3,900.0	19.08	96.67	3,726.1	952.92	-126.3	1,080.5	267.8	0.00	0.00	0.00
4,000.0	19.08	96.67	3,820.6	858.42	-130.1	1,112.9	275.8	0.00	0.00	0.00
4,100.0	19.08	96.67	3,915.1	763.91	-133.9	1,145.4	283.9	0.00	0.00	0.00
4,200.0	19.08	96.67	4,009.6	669.41	-137.7	1,177.9	291.9	0.00	0.00	0.00
4,300.0	19.08	96.67	4,104.1	574.90	-141.5	1,210.3	300.0	0.00	0.00	0.00
4,400.0	19.08	96.67	4,198.6	480.40	-145.3	1,242.8	308.0	0.00	0.00	0.00
4,500.0	19.08	96.67	4,293.1	385.89	-149.1	1,275.3	316.1	0.00	0.00	0.00
4,600.0	19.08	96.67	4,387.6	291.39	-152.9	1,307.8	324.1	0.00	0.00	0.00

Planning Report



Database:	EDM 5000.1 Single User Db	Local Co-ordinate Reference:	Well CS-LONGMEADOW 2-1-13
Company:	EXTRACTION OIL & GAS	TVD Reference:	KB-EST @ 4679.0usft (SAV 802)
Project:	WELD COUNTY, COLORADO (NAD 83)	MD Reference:	KB-EST @ 4679.0usft (SAV 802)
Site:	SW SE SEC 36 T6N R66W 6th P.M.	North Reference:	True
Well:	CS-LONGMEADOW 2-1-13	Survey Calculation Method:	Minimum Curvature
Wellbore:	ORIGINAL WELLBORE		
Design:	PROPOSAL #1		

Planned Survey

MD (usft)	Inc (°)	Azi (°)	TVD (usft)	SS (usft)	+N/-S (usft)	+E/-W (usft)	Vertical Section (usft)	Dogleg Rate (°/100usft)	Build Rate (°/100usft)	Turn Rate (°/100usft)
SUSSEX										
4,630.0	19.08	96.67	4,416.0	263.00	-154.0	1,317.5	326.5	0.00	0.00	0.00
4,700.0	19.08	96.67	4,482.1	196.88	-156.7	1,340.2	332.2	0.00	0.00	0.00
4,800.0	19.08	96.67	4,576.6	102.38	-160.5	1,372.7	340.2	0.00	0.00	0.00
4,900.0	19.08	96.67	4,671.1	7.87	-164.3	1,405.2	348.3	0.00	0.00	0.00
5,000.0	19.08	96.67	4,765.6	-86.63	-168.1	1,437.6	356.3	0.00	0.00	0.00
SHANNON										
5,091.4	19.08	96.67	4,852.0	-173.00	-171.6	1,467.3	363.7	0.00	0.00	0.00
5,100.0	19.08	96.67	4,860.1	-181.14	-171.9	1,470.1	364.4	0.00	0.00	0.00
5,200.0	19.08	96.67	4,954.6	-275.64	-175.7	1,502.6	372.4	0.00	0.00	0.00
5,300.0	19.08	96.67	5,049.1	-370.15	-179.5	1,535.1	380.4	0.00	0.00	0.00
5,400.0	19.08	96.67	5,143.7	-464.65	-183.3	1,567.5	388.5	0.00	0.00	0.00
5,500.0	19.08	96.67	5,238.2	-559.16	-187.1	1,600.0	396.5	0.00	0.00	0.00
5,600.0	19.08	96.67	5,332.7	-653.66	-190.9	1,632.5	404.6	0.00	0.00	0.00
5,700.0	19.08	96.67	5,427.2	-748.17	-194.7	1,664.9	412.6	0.00	0.00	0.00
END OF TANGENT										
5,722.5	19.08	96.67	5,448.4	-769.43	-195.5	1,672.2	414.4	0.00	0.00	0.00
5,800.0	17.53	96.67	5,522.0	-843.01	-198.3	1,696.4	420.4	2.00	-2.00	0.00
5,900.0	15.53	96.67	5,617.9	-938.87	-201.6	1,724.7	427.4	2.00	-2.00	0.00
6,000.0	13.53	96.67	5,714.7	-1,035.66	-204.6	1,749.6	433.6	2.00	-2.00	0.00
6,100.0	11.53	96.67	5,812.3	-1,133.28	-207.1	1,771.2	439.0	2.00	-2.00	0.00
6,200.0	9.53	96.67	5,910.6	-1,231.59	-209.2	1,789.3	443.5	2.00	-2.00	0.00
6,300.0	7.53	96.67	6,009.5	-1,330.47	-210.9	1,804.0	447.1	2.00	-2.00	0.00
6,400.0	5.53	96.67	6,108.8	-1,429.82	-212.2	1,815.3	449.9	2.00	-2.00	0.00
6,500.0	3.53	96.67	6,208.5	-1,529.50	-213.2	1,823.2	451.9	2.00	-2.00	0.00
6,600.0	1.53	96.67	6,308.4	-1,629.40	-213.7	1,827.6	452.9	2.00	-2.00	0.00
EOD TO VERTICAL										
6,676.6	0.00	0.00	6,385.0	-1,706.00	-213.8	1,828.6	453.2	2.00	-2.00	0.00
6,700.0	0.00	0.00	6,408.4	-1,729.39	-213.8	1,828.6	453.2	0.00	0.00	0.00
KOP (10°/100ft BUR)										
6,706.6	0.00	0.00	6,415.0	-1,736.00	-213.8	1,828.6	453.2	0.00	0.00	0.00
6,800.0	9.34	179.97	6,508.0	-1,828.98	-221.4	1,828.6	460.7	10.00	10.00	0.00
6,900.0	19.34	179.97	6,604.7	-1,925.74	-246.1	1,828.6	485.2	10.00	10.00	0.00
7,000.0	29.34	179.97	6,695.7	-2,016.74	-287.3	1,828.6	526.0	10.00	10.00	0.00
7,100.0	39.34	179.97	6,778.2	-2,099.21	-343.6	1,828.7	581.9	10.00	10.00	0.00
7,200.0	49.34	179.97	6,849.6	-2,170.64	-413.4	1,828.7	651.1	10.00	10.00	0.00
NIOBRARA										
7,213.0	50.64	179.97	6,858.0	-2,179.00	-423.4	1,828.7	661.0	10.00	10.00	0.00
7,300.0	59.33	179.97	6,907.9	-2,228.87	-494.6	1,828.7	731.5	10.00	10.00	0.00
7,400.0	69.33	179.97	6,951.1	-2,272.13	-584.6	1,828.8	820.8	10.00	10.00	0.00
7,500.0	79.33	179.97	6,978.1	-2,299.10	-680.7	1,828.8	916.1	10.00	10.00	0.00
7,600.0	89.33	179.97	6,988.0	-2,308.96	-780.1	1,828.9	1,014.6	10.00	10.00	0.00
LANDING PNT - CS-LONGMEADOW 2-1-13										
7,606.7	90.00	179.97	6,988.0	-2,309.00	-786.8	1,828.9	1,021.3	10.00	10.00	0.00
7,700.0	90.00	179.97	6,988.0	-2,308.99	-880.1	1,829.0	1,113.7	0.00	0.00	0.00
7,800.0	90.00	179.97	6,988.0	-2,308.99	-980.1	1,829.0	1,212.9	0.00	0.00	0.00
7,900.0	90.00	179.97	6,988.0	-2,308.98	-1,080.1	1,829.1	1,312.0	0.00	0.00	0.00
8,000.0	90.00	179.97	6,988.0	-2,308.97	-1,180.1	1,829.1	1,411.1	0.00	0.00	0.00
8,100.0	90.00	179.97	6,988.0	-2,308.97	-1,280.1	1,829.2	1,510.3	0.00	0.00	0.00
8,200.0	90.00	179.97	6,988.0	-2,308.96	-1,380.1	1,829.2	1,609.4	0.00	0.00	0.00
8,300.0	90.00	179.97	6,988.0	-2,308.95	-1,480.1	1,829.3	1,708.5	0.00	0.00	0.00
8,400.0	90.00	179.97	6,987.9	-2,308.95	-1,580.1	1,829.3	1,807.7	0.00	0.00	0.00
8,500.0	90.00	179.97	6,987.9	-2,308.94	-1,680.1	1,829.4	1,906.8	0.00	0.00	0.00

Planning Report



Database:	EDM 5000.1 Single User Db	Local Co-ordinate Reference:	Well CS-LONGMEADOW 2-1-13
Company:	EXTRACTION OIL & GAS	TVD Reference:	KB-EST @ 4679.0usft (SAV 802)
Project:	WELD COUNTY, COLORADO (NAD 83)	MD Reference:	KB-EST @ 4679.0usft (SAV 802)
Site:	SW SE SEC 36 T6N R66W 6th P.M.	North Reference:	True
Well:	CS-LONGMEADOW 2-1-13	Survey Calculation Method:	Minimum Curvature
Wellbore:	ORIGINAL WELLBORE		
Design:	PROPOSAL #1		

Planned Survey										
MD (usft)	Inc (°)	Azi (°)	TVD (usft)	SS (usft)	+N/-S (usft)	+E/-W (usft)	Vertical Section (usft)	Dogleg Rate (°/100usft)	Build Rate (°/100usft)	Turn Rate (°/100usft)
8,600.0	90.00	179.97	6,987.9	-2,308.93	-1,780.1	1,829.4	2,005.9	0.00	0.00	0.00
8,700.0	90.00	179.97	6,987.9	-2,308.93	-1,880.1	1,829.5	2,105.1	0.00	0.00	0.00
8,800.0	90.00	179.97	6,987.9	-2,308.92	-1,980.1	1,829.5	2,204.2	0.00	0.00	0.00
8,900.0	90.00	179.97	6,987.9	-2,308.92	-2,080.1	1,829.6	2,303.3	0.00	0.00	0.00
9,000.0	90.00	179.97	6,987.9	-2,308.91	-2,180.1	1,829.6	2,402.5	0.00	0.00	0.00
9,100.0	90.00	179.97	6,987.9	-2,308.90	-2,280.1	1,829.7	2,501.6	0.00	0.00	0.00
9,200.0	90.00	179.97	6,987.9	-2,308.90	-2,380.1	1,829.7	2,600.7	0.00	0.00	0.00
9,300.0	90.00	179.97	6,987.9	-2,308.89	-2,480.1	1,829.8	2,699.9	0.00	0.00	0.00
9,400.0	90.00	179.97	6,987.9	-2,308.89	-2,580.1	1,829.9	2,799.0	0.00	0.00	0.00
9,500.0	90.00	179.97	6,987.9	-2,308.88	-2,680.1	1,829.9	2,898.1	0.00	0.00	0.00
9,600.0	90.00	179.97	6,987.9	-2,308.88	-2,780.1	1,830.0	2,997.3	0.00	0.00	0.00
9,700.0	90.00	179.97	6,987.9	-2,308.87	-2,880.1	1,830.0	3,096.4	0.00	0.00	0.00
9,800.0	90.00	179.97	6,987.9	-2,308.87	-2,980.1	1,830.1	3,195.5	0.00	0.00	0.00
9,900.0	90.00	179.97	6,987.9	-2,308.86	-3,080.1	1,830.1	3,294.7	0.00	0.00	0.00
10,000.0	90.00	179.97	6,987.9	-2,308.86	-3,180.1	1,830.2	3,393.8	0.00	0.00	0.00
10,100.0	90.00	179.97	6,987.9	-2,308.85	-3,280.1	1,830.2	3,492.9	0.00	0.00	0.00
10,200.0	90.00	179.97	6,987.8	-2,308.85	-3,380.1	1,830.3	3,592.1	0.00	0.00	0.00
10,300.0	90.00	179.97	6,987.8	-2,308.84	-3,480.1	1,830.3	3,691.2	0.00	0.00	0.00
10,400.0	90.00	179.97	6,987.8	-2,308.84	-3,580.1	1,830.4	3,790.3	0.00	0.00	0.00
10,500.0	90.00	179.97	6,987.8	-2,308.84	-3,680.1	1,830.4	3,889.5	0.00	0.00	0.00
10,600.0	90.00	179.97	6,987.8	-2,308.83	-3,780.1	1,830.5	3,988.6	0.00	0.00	0.00
10,700.0	90.00	179.97	6,987.8	-2,308.83	-3,880.1	1,830.5	4,087.7	0.00	0.00	0.00
10,800.0	90.00	179.97	6,987.8	-2,308.82	-3,980.1	1,830.6	4,186.9	0.00	0.00	0.00
10,900.0	90.00	179.97	6,987.8	-2,308.82	-4,080.1	1,830.6	4,286.0	0.00	0.00	0.00
11,000.0	90.00	179.97	6,987.8	-2,308.82	-4,180.1	1,830.7	4,385.1	0.00	0.00	0.00
11,100.0	90.00	179.97	6,987.8	-2,308.81	-4,280.1	1,830.7	4,484.3	0.00	0.00	0.00
11,200.0	90.00	179.97	6,987.8	-2,308.81	-4,380.1	1,830.8	4,583.4	0.00	0.00	0.00
11,300.0	90.00	179.97	6,987.8	-2,308.81	-4,480.1	1,830.8	4,682.5	0.00	0.00	0.00
11,400.0	90.00	179.97	6,987.8	-2,308.80	-4,580.1	1,830.9	4,781.7	0.00	0.00	0.00
11,500.0	90.00	179.97	6,987.8	-2,308.80	-4,680.1	1,830.9	4,880.8	0.00	0.00	0.00
11,600.0	90.00	179.97	6,987.8	-2,308.80	-4,780.1	1,831.0	4,979.9	0.00	0.00	0.00
11,700.0	90.00	179.97	6,987.8	-2,308.80	-4,880.1	1,831.0	5,079.0	0.00	0.00	0.00
11,800.0	90.00	179.97	6,987.8	-2,308.79	-4,980.1	1,831.1	5,178.2	0.00	0.00	0.00
11,900.0	90.00	179.97	6,987.8	-2,308.79	-5,080.1	1,831.1	5,277.3	0.00	0.00	0.00
12,000.0	90.00	179.97	6,987.8	-2,308.79	-5,180.1	1,831.2	5,376.4	0.00	0.00	0.00
12,100.0	90.00	179.97	6,987.8	-2,308.79	-5,280.1	1,831.2	5,475.6	0.00	0.00	0.00
12,200.0	90.00	179.97	6,987.8	-2,308.78	-5,380.1	1,831.3	5,574.7	0.00	0.00	0.00
12,300.0	90.00	179.97	6,987.8	-2,308.78	-5,480.1	1,831.4	5,673.8	0.00	0.00	0.00
12,400.0	90.00	179.97	6,987.8	-2,308.78	-5,580.1	1,831.4	5,773.0	0.00	0.00	0.00
12,500.0	90.00	179.97	6,987.8	-2,308.78	-5,680.1	1,831.5	5,872.1	0.00	0.00	0.00
12,600.0	90.00	179.97	6,987.8	-2,308.78	-5,780.1	1,831.5	5,971.2	0.00	0.00	0.00
12,700.0	90.00	179.97	6,987.8	-2,308.77	-5,880.1	1,831.6	6,070.4	0.00	0.00	0.00
12,800.0	90.00	179.97	6,987.8	-2,308.77	-5,980.1	1,831.6	6,169.5	0.00	0.00	0.00
12,900.0	90.00	179.97	6,987.8	-2,308.77	-6,080.1	1,831.7	6,268.6	0.00	0.00	0.00
13,000.0	90.00	179.97	6,987.8	-2,308.77	-6,180.1	1,831.7	6,367.8	0.00	0.00	0.00
13,100.0	90.00	179.97	6,987.8	-2,308.77	-6,280.1	1,831.8	6,466.9	0.00	0.00	0.00
13,200.0	90.00	179.97	6,987.8	-2,308.77	-6,380.1	1,831.8	6,566.0	0.00	0.00	0.00
13,300.0	90.00	179.97	6,987.8	-2,308.77	-6,480.1	1,831.9	6,665.2	0.00	0.00	0.00
13,400.0	90.00	179.97	6,987.8	-2,308.77	-6,580.1	1,831.9	6,764.3	0.00	0.00	0.00
13,500.0	90.00	179.97	6,987.8	-2,308.76	-6,680.1	1,832.0	6,863.4	0.00	0.00	0.00
13,600.0	90.00	179.97	6,987.8	-2,308.76	-6,780.1	1,832.0	6,962.6	0.00	0.00	0.00
13,700.0	90.00	179.97	6,987.8	-2,308.76	-6,880.1	1,832.1	7,061.7	0.00	0.00	0.00
13,800.0	90.00	179.97	6,987.8	-2,308.76	-6,980.1	1,832.1	7,160.8	0.00	0.00	0.00
13,900.0	90.00	179.97	6,987.8	-2,308.76	-7,080.1	1,832.2	7,260.0	0.00	0.00	0.00

Planning Report



Database:	EDM 5000.1 Single User Db	Local Co-ordinate Reference:	Well CS-LONGMEADOW 2-1-13
Company:	EXTRACTION OIL & GAS	TVD Reference:	KB-EST @ 4679.0usft (SAV 802)
Project:	WELD COUNTY, COLORADO (NAD 83)	MD Reference:	KB-EST @ 4679.0usft (SAV 802)
Site:	SW SE SEC 36 T6N R66W 6th P.M.	North Reference:	True
Well:	CS-LONGMEADOW 2-1-13	Survey Calculation Method:	Minimum Curvature
Wellbore:	ORIGINAL WELLBORE		
Design:	PROPOSAL #1		

Planned Survey										
MD (usft)	Inc (°)	Azi (°)	TVD (usft)	SS (usft)	+N/-S (usft)	+E/-W (usft)	Vertical Section (usft)	Dogleg Rate (°/100usft)	Build Rate (°/100usft)	Turn Rate (°/100usft)
14,000.0	90.00	179.97	6,987.8	-2,308.76	-7,180.1	1,832.2	7,359.1	0.00	0.00	0.00
14,100.0	90.00	179.97	6,987.8	-2,308.76	-7,280.1	1,832.3	7,458.2	0.00	0.00	0.00
14,200.0	90.00	179.97	6,987.8	-2,308.76	-7,380.1	1,832.3	7,557.4	0.00	0.00	0.00
14,300.0	90.00	179.97	6,987.8	-2,308.76	-7,480.1	1,832.4	7,656.5	0.00	0.00	0.00
14,400.0	90.00	179.97	6,987.8	-2,308.76	-7,580.1	1,832.4	7,755.6	0.00	0.00	0.00
14,500.0	90.00	179.97	6,987.8	-2,308.76	-7,680.1	1,832.5	7,854.8	0.00	0.00	0.00
14,600.0	90.00	179.97	6,987.8	-2,308.76	-7,780.1	1,832.5	7,953.9	0.00	0.00	0.00
14,700.0	90.00	179.97	6,987.8	-2,308.76	-7,880.1	1,832.6	8,053.0	0.00	0.00	0.00
14,800.0	90.00	179.97	6,987.8	-2,308.77	-7,980.1	1,832.6	8,152.2	0.00	0.00	0.00
14,900.0	90.00	179.97	6,987.8	-2,308.77	-8,080.1	1,832.7	8,251.3	0.00	0.00	0.00
15,000.0	90.00	179.97	6,987.8	-2,308.77	-8,180.1	1,832.7	8,350.4	0.00	0.00	0.00
15,100.0	90.00	179.97	6,987.8	-2,308.77	-8,280.1	1,832.8	8,449.5	0.00	0.00	0.00
15,200.0	90.00	179.97	6,987.8	-2,308.77	-8,380.1	1,832.8	8,548.7	0.00	0.00	0.00
15,300.0	90.00	179.97	6,987.8	-2,308.77	-8,480.1	1,832.9	8,647.8	0.00	0.00	0.00
15,400.0	90.00	179.97	6,987.8	-2,308.77	-8,580.1	1,832.9	8,746.9	0.00	0.00	0.00
15,500.0	90.00	179.97	6,987.8	-2,308.77	-8,680.1	1,833.0	8,846.1	0.00	0.00	0.00
15,600.0	90.00	179.97	6,987.8	-2,308.78	-8,780.1	1,833.0	8,945.2	0.00	0.00	0.00
15,700.0	90.00	179.97	6,987.8	-2,308.78	-8,880.1	1,833.1	9,044.3	0.00	0.00	0.00
15,800.0	90.00	179.97	6,987.8	-2,308.78	-8,980.1	1,833.1	9,143.5	0.00	0.00	0.00
15,900.0	90.00	179.97	6,987.8	-2,308.78	-9,080.1	1,833.2	9,242.6	0.00	0.00	0.00
16,000.0	90.00	179.97	6,987.8	-2,308.78	-9,180.1	1,833.2	9,341.7	0.00	0.00	0.00
16,100.0	90.00	179.97	6,987.8	-2,308.79	-9,280.1	1,833.3	9,440.9	0.00	0.00	0.00
16,200.0	90.00	179.97	6,987.8	-2,308.79	-9,380.1	1,833.3	9,540.0	0.00	0.00	0.00
16,300.0	90.00	179.97	6,987.8	-2,308.79	-9,480.1	1,833.4	9,639.1	0.00	0.00	0.00
16,400.0	90.00	179.97	6,987.8	-2,308.79	-9,580.1	1,833.4	9,738.3	0.00	0.00	0.00
16,500.0	90.00	179.97	6,987.8	-2,308.80	-9,680.1	1,833.5	9,837.4	0.00	0.00	0.00
16,600.0	90.00	179.97	6,987.8	-2,308.80	-9,780.1	1,833.5	9,936.5	0.00	0.00	0.00
16,700.0	90.00	179.97	6,987.8	-2,308.80	-9,880.1	1,833.6	10,035.7	0.00	0.00	0.00
16,800.0	90.00	179.97	6,987.8	-2,308.80	-9,980.1	1,833.6	10,134.8	0.00	0.00	0.00
16,900.0	90.00	179.97	6,987.8	-2,308.81	-10,080.1	1,833.7	10,233.9	0.00	0.00	0.00
17,000.0	90.00	179.97	6,987.8	-2,308.81	-10,180.1	1,833.7	10,333.1	0.00	0.00	0.00
17,100.0	90.00	179.97	6,987.8	-2,308.81	-10,280.1	1,833.8	10,432.2	0.00	0.00	0.00
17,200.0	90.00	179.97	6,987.8	-2,308.82	-10,380.1	1,833.8	10,531.3	0.00	0.00	0.00
17,300.0	90.00	179.97	6,987.8	-2,308.82	-10,480.1	1,833.8	10,630.5	0.00	0.00	0.00
17,400.0	90.00	179.97	6,987.8	-2,308.82	-10,580.1	1,833.9	10,729.6	0.00	0.00	0.00
17,500.0	90.00	179.97	6,987.8	-2,308.83	-10,680.1	1,833.9	10,828.7	0.00	0.00	0.00
17,600.0	90.00	179.97	6,987.8	-2,308.83	-10,780.1	1,834.0	10,927.9	0.00	0.00	0.00
17,700.0	90.00	179.97	6,987.8	-2,308.84	-10,880.1	1,834.0	11,027.0	0.00	0.00	0.00
17,800.0	90.00	179.97	6,987.8	-2,308.84	-10,980.1	1,834.1	11,126.1	0.00	0.00	0.00
17,900.0	90.00	179.97	6,987.8	-2,308.84	-11,080.1	1,834.1	11,225.3	0.00	0.00	0.00
18,000.0	90.00	179.97	6,987.8	-2,308.85	-11,180.1	1,834.2	11,324.4	0.00	0.00	0.00
18,100.0	90.00	179.97	6,987.9	-2,308.85	-11,280.1	1,834.2	11,423.5	0.00	0.00	0.00
18,200.0	90.00	179.97	6,987.9	-2,308.86	-11,380.1	1,834.3	11,522.6	0.00	0.00	0.00
18,300.0	90.00	179.97	6,987.9	-2,308.86	-11,480.1	1,834.3	11,621.8	0.00	0.00	0.00
18,400.0	90.00	179.97	6,987.9	-2,308.87	-11,580.1	1,834.4	11,720.9	0.00	0.00	0.00
18,500.0	90.00	179.97	6,987.9	-2,308.87	-11,680.1	1,834.4	11,820.0	0.00	0.00	0.00
18,600.0	90.00	179.97	6,987.9	-2,308.88	-11,780.1	1,834.5	11,919.2	0.00	0.00	0.00
18,700.0	90.00	179.97	6,987.9	-2,308.88	-11,880.1	1,834.5	12,018.3	0.00	0.00	0.00
18,800.0	90.00	179.97	6,987.9	-2,308.89	-11,980.1	1,834.6	12,117.4	0.00	0.00	0.00
18,900.0	90.00	179.97	6,987.9	-2,308.89	-12,080.1	1,834.6	12,216.6	0.00	0.00	0.00
19,000.0	90.00	179.97	6,987.9	-2,308.90	-12,180.1	1,834.7	12,315.7	0.00	0.00	0.00
19,100.0	90.00	179.97	6,987.9	-2,308.90	-12,280.1	1,834.7	12,414.8	0.00	0.00	0.00
19,200.0	90.00	179.97	6,987.9	-2,308.91	-12,380.1	1,834.8	12,514.0	0.00	0.00	0.00
19,300.0	90.00	179.97	6,987.9	-2,308.91	-12,480.1	1,834.8	12,613.1	0.00	0.00	0.00

Database:	EDM 5000.1 Single User Db	Local Co-ordinate Reference:	Well CS-LONGMEADOW 2-1-13
Company:	EXTRACTION OIL & GAS	TVD Reference:	KB-EST @ 4679.0usft (SAV 802)
Project:	WELD COUNTY, COLORADO (NAD 83)	MD Reference:	KB-EST @ 4679.0usft (SAV 802)
Site:	SW SE SEC 36 T6N R66W 6th P.M.	North Reference:	True
Well:	CS-LONGMEADOW 2-1-13	Survey Calculation Method:	Minimum Curvature
Wellbore:	ORIGINAL WELLBORE		
Design:	PROPOSAL #1		

Planned Survey

MD (usft)	Inc (°)	Azi (°)	TVD (usft)	SS (usft)	+N/-S (usft)	+E/-W (usft)	Vertical Section (usft)	Dogleg Rate (°/100usft)	Build Rate (°/100usft)	Turn Rate (°/100usft)
19,400.0	90.00	179.97	6,987.9	-2,308.92	-12,580.1	1,834.9	12,712.2	0.00	0.00	0.00
19,500.0	90.00	179.97	6,987.9	-2,308.93	-12,680.1	1,834.9	12,811.4	0.00	0.00	0.00
19,600.0	90.00	179.97	6,987.9	-2,308.93	-12,780.1	1,835.0	12,910.5	0.00	0.00	0.00
19,700.0	90.00	179.97	6,987.9	-2,308.94	-12,880.1	1,835.0	13,009.6	0.00	0.00	0.00
19,800.0	90.00	179.97	6,987.9	-2,308.94	-12,980.1	1,835.1	13,108.8	0.00	0.00	0.00
19,900.0	90.00	179.97	6,988.0	-2,308.95	-13,080.1	1,835.1	13,207.9	0.00	0.00	0.00
20,000.0	90.00	179.97	6,988.0	-2,308.96	-13,180.1	1,835.1	13,307.0	0.00	0.00	0.00
20,100.0	90.00	179.97	6,988.0	-2,308.96	-13,280.1	1,835.2	13,406.2	0.00	0.00	0.00
20,200.0	90.00	179.97	6,988.0	-2,308.97	-13,380.1	1,835.2	13,505.3	0.00	0.00	0.00
20,300.0	90.00	179.97	6,988.0	-2,308.98	-13,480.1	1,835.3	13,604.4	0.00	0.00	0.00
20,400.0	90.00	179.97	6,988.0	-2,308.98	-13,580.1	1,835.3	13,703.6	0.00	0.00	0.00
20,500.0	90.00	179.97	6,988.0	-2,308.99	-13,680.1	1,835.4	13,802.7	0.00	0.00	0.00
20,600.0	90.00	179.97	6,988.0	-2,309.00	-13,780.1	1,835.4	13,901.8	0.00	0.00	0.00
BHL - CS-LONGMEADOW 2-1-13										
20,609.0	90.00	179.97	6,988.0	-2,309.00	-13,789.1	1,835.4	13,910.8	0.00	0.00	0.00

Formations

MD (usft)	TVD (usft)	Name	Lithology	Dip (°)	Dip Direction (°)
3,820.6	3,651.0	PARKMAN			
4,630.0	4,416.0	SUSSEX			
5,091.4	4,852.0	SHANNON			
7,213.0	6,858.0	NIOBRARA			

Plan Annotations

MD (usft)	TVD (usft)	Local Coordinates		Comment
		+N/-S (usft)	+E/-W (usft)	
100.0	100.0	0.0	0.0	START NUDGE (2°/100ft BUR)
1,054.1	1,036.6	-18.3	156.4	EOB TO 19.08° INC
1,861.9	1,800.0	-48.9	418.7	9 5/8" SURFACE CASING
5,722.5	5,448.4	-195.5	1,672.2	END OF TANGENT
6,676.6	6,385.0	-213.8	1,828.6	EOD TO VERTICAL
6,706.6	6,415.0	-213.8	1,828.6	KOP (10°/100ft BUR)
7,606.7	6,988.0	-786.8	1,828.9	LANDING PNT - CS-LONGMEADOW 2-1-13
20,609.0	6,988.0	-13,789.1	1,835.4	BHL - CS-LONGMEADOW 2-1-13