

EXTRACTION OIL & GAS

WELD COUNTY, COLORADO (NAD 83)

SW SE SEC 36 T6N R66W 6th P.M.

CS-LONGMEADOW 1-1-13

ORIGINAL WELLBORE

27 June, 2015

Plan: PROPOSAL #1



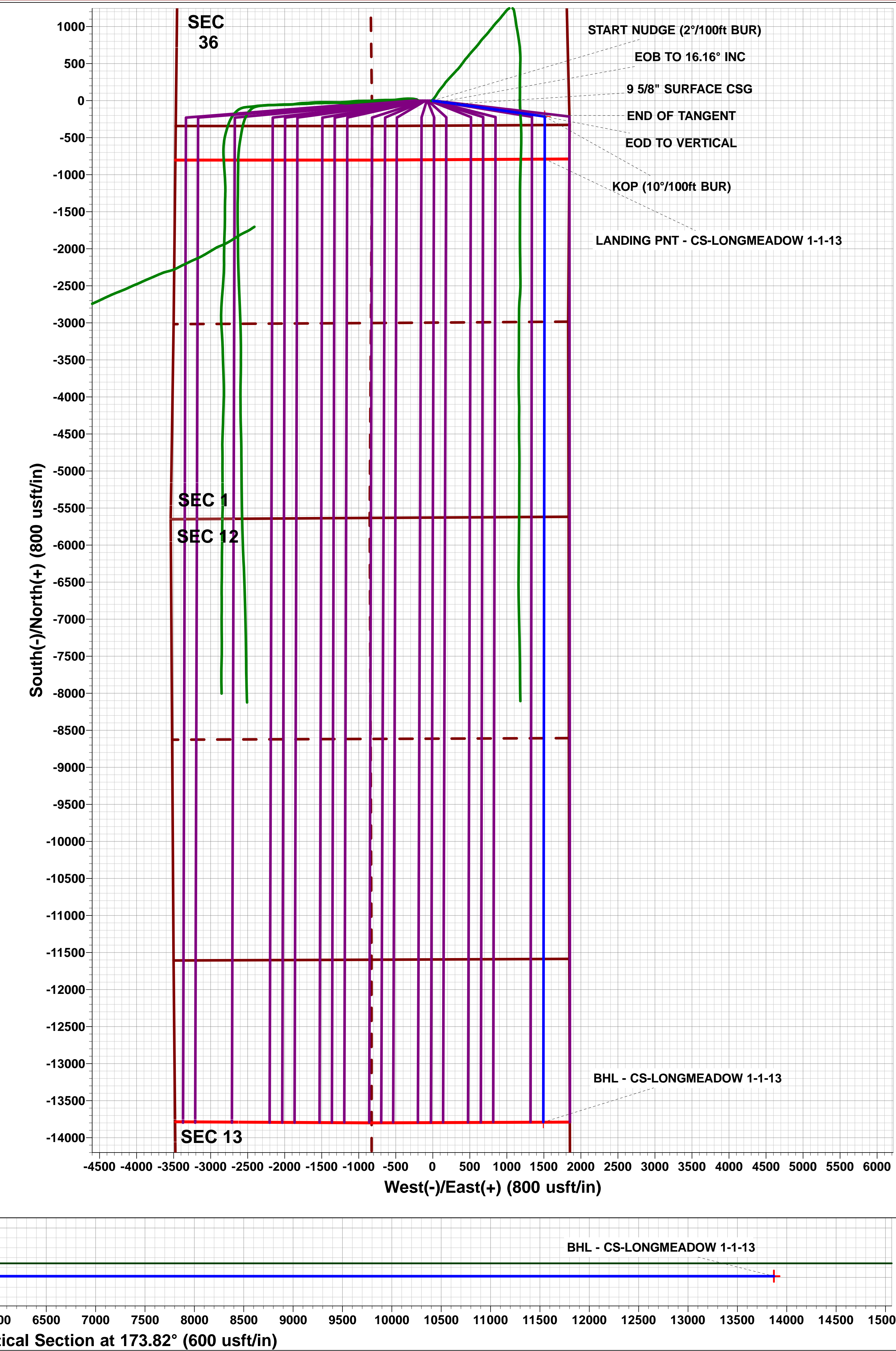
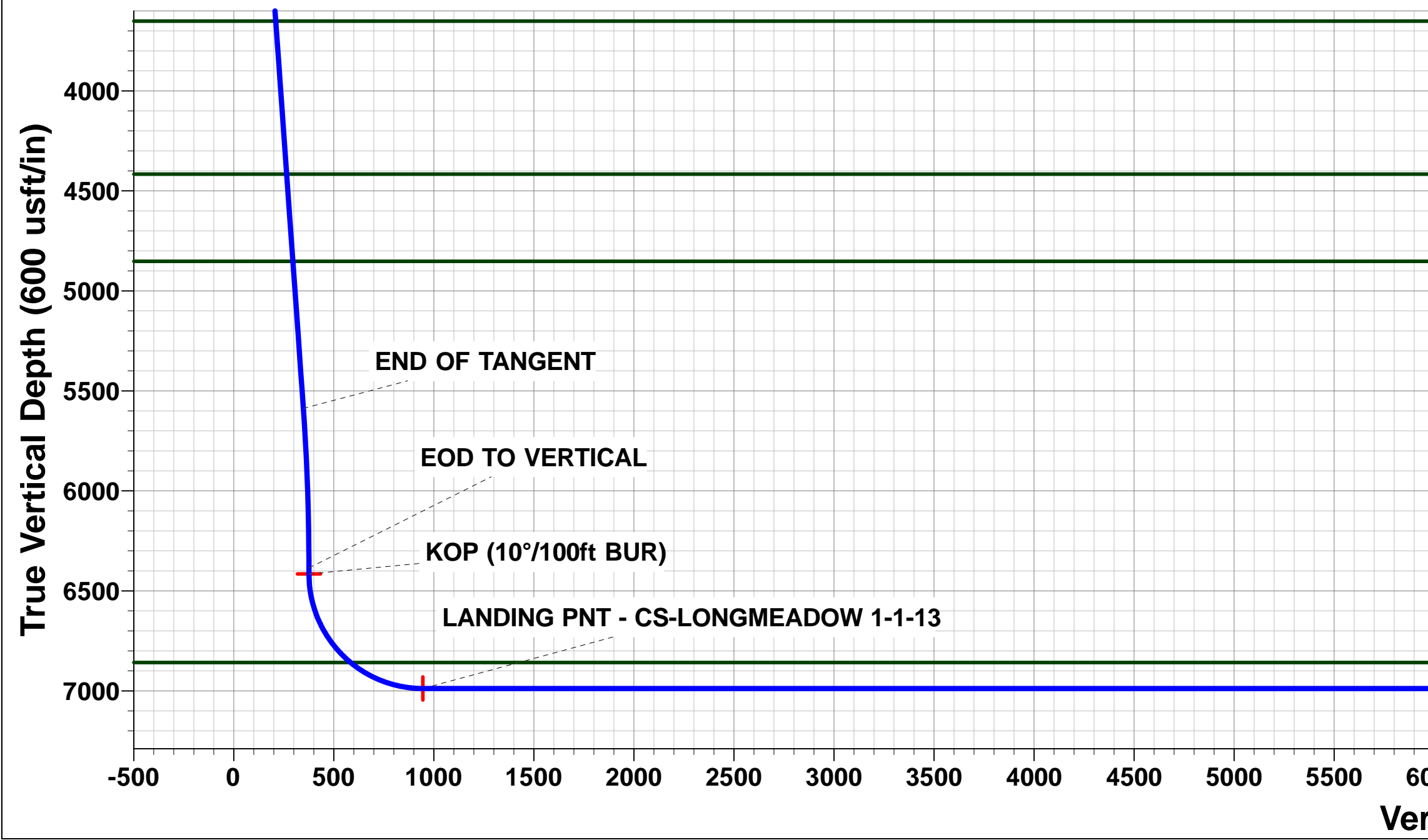
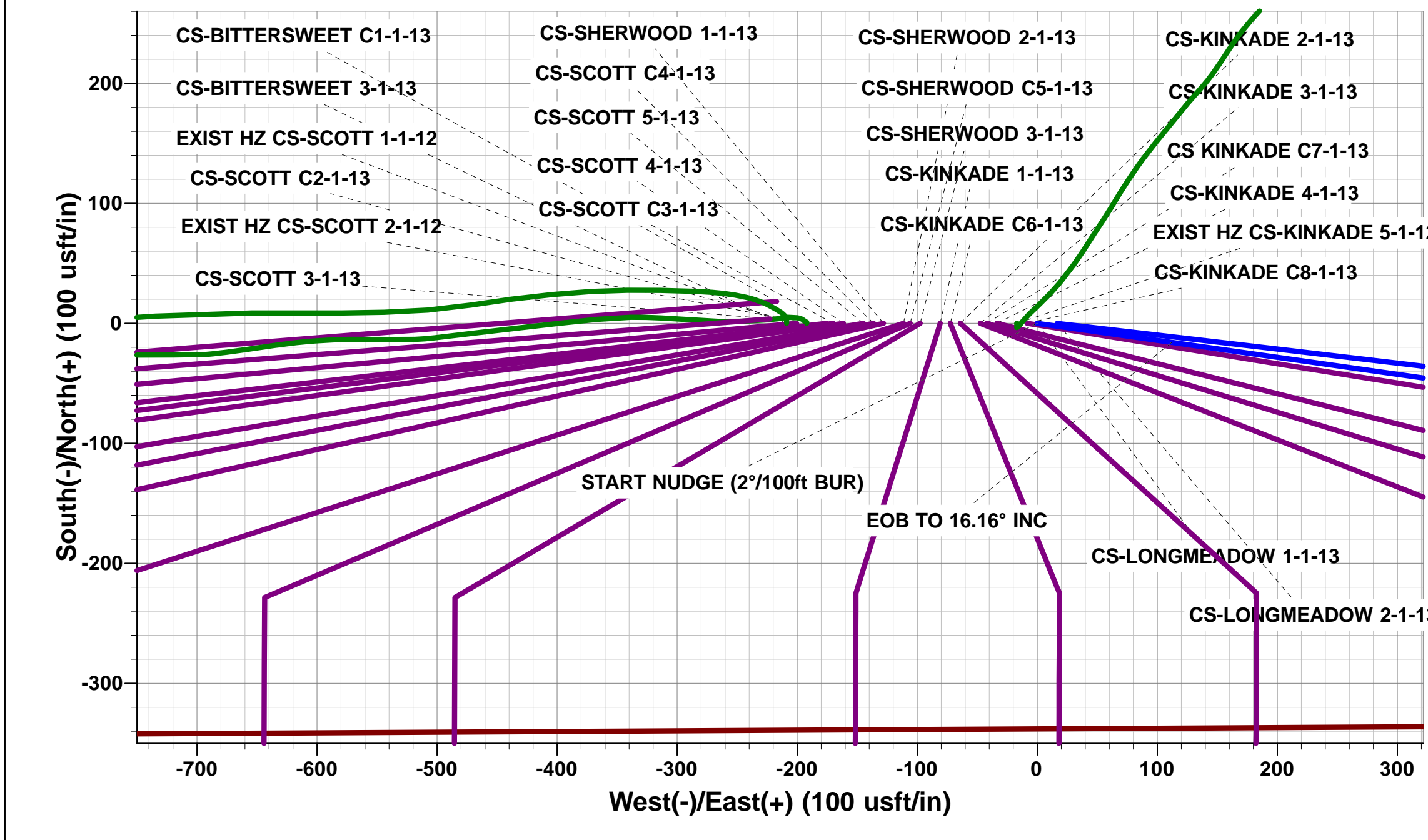
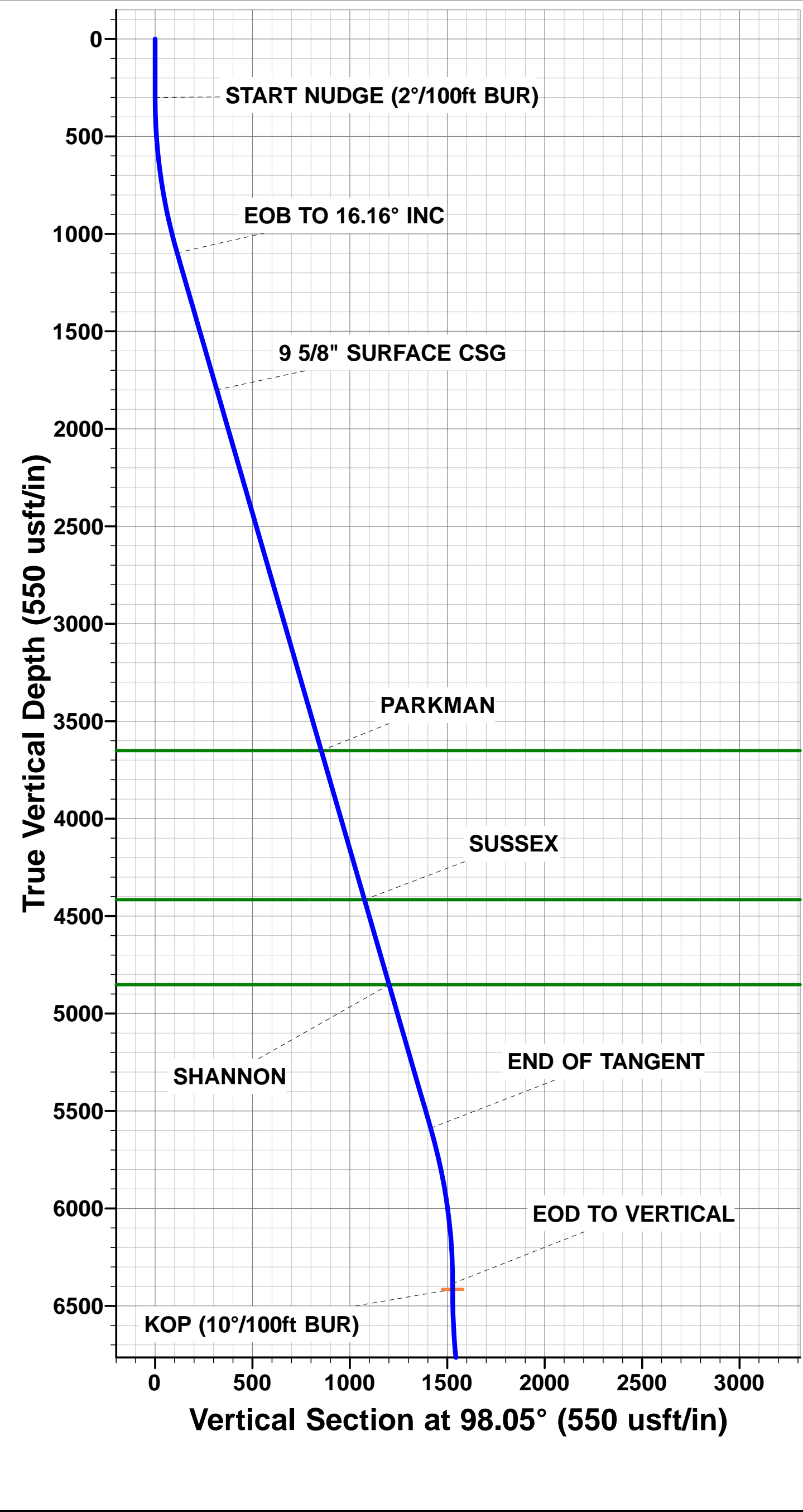


Project: WELD COUNTY, COLORADO (NAD 83)
Site: SW SE SEC 36 T6N R66W 6th P.M.
Well: CS-LONGMEADOW 1-1-13
Wellbore: ORIGINAL WELLBORE
Design: PROPOSAL #1

ANNOTATIONS									
TVD	MD	Inc	Azi	+N/-S	+E/-W	Vsect	Dep	Annotation	
300.0	300.0	0.00	0.00	0.0	0.0	0.0	0.0	START NUDGE (2°/100ft BUR)	
1097.3	1107.9	16.16	98.05	-15.8	112.1	27.8	113.2	EOB TO 16.16° INC	
1800.0	1839.6	16.16	98.05	-44.4	313.7	77.9	316.8	9 5/8" SURFACE CSG	
5587.7	5783.1	16.16	98.05	-198.1	1400.3	347.6	1414.3	END OF TANGENT	
6385.0	6591.0	0.00	0.00	-213.9	1512.4	375.4	1527.5	EOD TO VERTICAL	
6415.0	6621.0	0.00	0.00	-213.9	1512.4	375.4	1527.5	KOP (10°/100ft BUR)	
6988.0	7521.1	90.00	180.08	-786.9	1511.6	945.0	2100.4	LANDING PNT - CS-LONGMEADOW 1-1-13	
6988.0	20523.4	90.00	180.08	-13789.2	1492.9	13869.7	15102.7	BHL - CS-LONGMEADOW 1-1-13	

PROPOSED LOCAL COORDINATES:
SHL: 338ft FSL & 1840ft FEL Sec 36
LANDING PNT: 460ft FNL & 333ft FEL Sec 1
BHL: 2203ft FNL & 358ft FEL Sec 13

WELLBORE TARGET DETAILS (LAT/LONG)					
Name	TVD	+N/-S	+E/-W	Latitude	Longitude
KOP - CS-LONGMEADOW 1-1-13	6415.0	-213.9	1512.4	40.437783	-104.717047
BHL - CS-LONGMEADOW 1-1-13	6988.0	-13789.2	1492.9	40.400520	-104.717120
LANDING PNT - CS-LONGMEADOW 1-1-13	6988.0	-786.9	1511.6	40.436210	-104.717050



Planning Report



Database:	EDM 5000.1 Single User Db	Local Co-ordinate Reference:	Well CS-LONGMEADOW 1-1-13
Company:	EXTRACTION OIL & GAS	TVD Reference:	KB-EST @ 4680.0usft (SAV 802)
Project:	WELD COUNTY, COLORADO (NAD 83)	MD Reference:	KB-EST @ 4680.0usft (SAV 802)
Site:	SW SE SEC 36 T6N R66W 6th P.M.	North Reference:	True
Well:	CS-LONGMEADOW 1-1-13	Survey Calculation Method:	Minimum Curvature
Wellbore:	ORIGINAL WELLBORE		
Design:	PROPOSAL #1		

Project	WELD COUNTY, COLORADO (NAD 83)		
Map System:	US State Plane 1983	System Datum:	Mean Sea Level
Geo Datum:	North American Datum 1983		
Map Zone:	Colorado Northern Zone		Using geodetic scale factor

Site	SW SE SEC 36 T6N R66W 6th P.M.				
Site Position:		Northing:	1,403,485.52 usft	Latitude:	40.438370
From:	Lat/Long	Easting:	3,216,213.28 usft	Longitude:	-104.723230
Position Uncertainty:	0.0 usft	Slot Radius:	1.10000ft	Grid Convergence:	0.50 °

Well	CS-LONGMEADOW 1-1-13					
Well Position	+N/-S	0.0 usft	Northing:	1,403,487.34 usft	Latitude:	40.438370
	+E/-W	208.8 usft	Easting:	3,216,422.04 usft	Longitude:	-104.722480
Position Uncertainty		0.0 usft	Wellhead Elevation:	usft	Ground Level:	4,664.0 usft

Wellbore	ORIGINAL WELLBORE				
Magnetics	Model Name	Sample Date	Declination (°)	Dip Angle (°)	Field Strength (nT)
	IGRF2015	23/06/2015	8.40	66.94	52,645

Design	PROPOSAL #1			
Audit Notes:				
Version:	Phase:	PROTOTYPE	Tie On Depth:	0.0
Vertical Section:	Depth From (TVD) (usft)	+N/-S (usft)	+E/-W (usft)	Direction (°)
	0.0	0.0	0.0	173.82

Plan Sections											
MD (usft)	Inc (°)	Azi (°)	Vertical Depth	SS (usft)	+N/-S (usft)	+E/-W (usft)	Dogleg Rate (°/100usf)	Build Rate (°/100usf)	Turn Rate (°/100usf)	TFO (°)	Target
0.0	0.00	0.00	0.0	-4,680.0	0.0	0.0	0.00	0.00	0.00	0.00	
300.0	0.00	0.00	300.0	-4,380.0	0.0	0.0	0.00	0.00	0.00	0.00	
1,107.9	16.16	98.05	1,097.3	-3,582.7	-15.8	112.1	2.00	2.00	0.00	98.05	
5,783.1	16.16	98.05	5,587.7	907.7	-198.1	1,400.3	0.00	0.00	0.00	0.00	
6,591.0	0.00	0.00	6,385.0	1,705.0	-213.9	1,512.4	2.00	-2.00	0.00	180.00	
6,621.0	0.00	0.00	6,415.0	1,735.0	-213.9	1,512.4	0.00	0.00	0.00	0.00	KOP - CS-LONGME
7,521.1	90.00	180.08	6,988.0	2,308.0	-786.9	1,511.6	10.00	10.00	-19.99	180.08	LANDING PNT - CS
20,523.4	90.00	180.08	6,988.0	2,308.0	-13,789.2	1,492.9	0.00	0.00	0.00	-22.97	BHL - CS-LONGME

Planning Report



Database:	EDM 5000.1 Single User Db	Local Co-ordinate Reference:	Well CS-LONGMEADOW 1-1-13
Company:	EXTRACTION OIL & GAS	TVD Reference:	KB-EST @ 4680.0usft (SAV 802)
Project:	WELD COUNTY, COLORADO (NAD 83)	MD Reference:	KB-EST @ 4680.0usft (SAV 802)
Site:	SW SE SEC 36 T6N R66W 6th P.M.	North Reference:	True
Well:	CS-LONGMEADOW 1-1-13	Survey Calculation Method:	Minimum Curvature
Wellbore:	ORIGINAL WELLBORE		
Design:	PROPOSAL #1		

Planned Survey

MD (usft)	Inc (°)	Azi (°)	TVD (usft)	SS (usft)	+N/-S (usft)	+E/-W (usft)	Vertical Section (usft)	Dogleg Rate (°/100usft)	Build Rate (°/100usft)	Turn Rate (°/100usft)
0.0	0.00	0.00	0.0	4,680.00	0.0	0.0	0.0	0.00	0.00	0.00
100.0	0.00	0.00	100.0	4,580.00	0.0	0.0	0.0	0.00	0.00	0.00
200.0	0.00	0.00	200.0	4,480.00	0.0	0.0	0.0	0.00	0.00	0.00
START NUDGE (2°/100ft BUR)										
300.0	0.00	0.00	300.0	4,380.00	0.0	0.0	0.0	0.00	0.00	0.00
400.0	2.00	98.05	400.0	4,280.02	-0.2	1.7	0.4	2.00	2.00	0.00
500.0	4.00	98.05	499.8	4,180.16	-1.0	6.9	1.7	2.00	2.00	0.00
600.0	6.00	98.05	599.5	4,080.55	-2.2	15.5	3.9	2.00	2.00	0.00
700.0	8.00	98.05	698.7	3,981.30	-3.9	27.6	6.9	2.00	2.00	0.00
800.0	10.00	98.05	797.5	3,882.53	-6.1	43.1	10.7	2.00	2.00	0.00
900.0	12.00	98.05	895.6	3,784.38	-8.8	62.0	15.4	2.00	2.00	0.00
1,000.0	14.00	98.05	993.1	3,686.94	-11.9	84.3	20.9	2.00	2.00	0.00
1,100.0	16.00	98.05	1,089.6	3,590.36	-15.5	109.9	27.3	2.00	2.00	0.00
EOB TO 16.16° INC										
1,107.9	16.16	98.05	1,097.3	3,582.73	-15.8	112.1	27.8	2.00	2.00	0.00
1,200.0	16.16	98.05	1,185.7	3,494.30	-19.4	137.4	34.1	0.00	0.00	0.00
1,300.0	16.16	98.05	1,281.7	3,398.26	-23.3	165.0	41.0	0.00	0.00	0.00
1,400.0	16.16	98.05	1,377.8	3,302.21	-27.2	192.5	47.8	0.00	0.00	0.00
1,500.0	16.16	98.05	1,473.8	3,206.16	-31.1	220.1	54.6	0.00	0.00	0.00
1,600.0	16.16	98.05	1,569.9	3,110.11	-35.0	247.7	61.5	0.00	0.00	0.00
1,700.0	16.16	98.05	1,665.9	3,014.06	-38.9	275.2	68.3	0.00	0.00	0.00
1,800.0	16.16	98.05	1,762.0	2,918.01	-42.8	302.8	75.2	0.00	0.00	0.00
9 5/8" SURFACE CSG										
1,839.6	16.16	98.05	1,800.0	2,880.00	-44.4	313.7	77.9	0.00	0.00	0.00
1,900.0	16.16	98.05	1,858.0	2,821.96	-46.7	330.3	82.0	0.00	0.00	0.00
2,000.0	16.16	98.05	1,954.1	2,725.91	-50.6	357.9	88.8	0.00	0.00	0.00
2,100.0	16.16	98.05	2,050.1	2,629.86	-54.5	385.4	95.7	0.00	0.00	0.00
2,200.0	16.16	98.05	2,146.2	2,533.81	-58.4	413.0	102.5	0.00	0.00	0.00
2,300.0	16.16	98.05	2,242.2	2,437.76	-62.3	440.5	109.4	0.00	0.00	0.00
2,400.0	16.16	98.05	2,338.3	2,341.71	-66.2	468.1	116.2	0.00	0.00	0.00
2,500.0	16.16	98.05	2,434.3	2,245.66	-70.1	495.7	123.0	0.00	0.00	0.00
2,600.0	16.16	98.05	2,530.4	2,149.61	-74.0	523.2	129.9	0.00	0.00	0.00
2,700.0	16.16	98.05	2,626.4	2,053.56	-77.9	550.8	136.7	0.00	0.00	0.00
2,800.0	16.16	98.05	2,722.5	1,957.51	-81.8	578.3	143.6	0.00	0.00	0.00
2,900.0	16.16	98.05	2,818.5	1,861.46	-85.7	605.9	150.4	0.00	0.00	0.00
3,000.0	16.16	98.05	2,914.6	1,765.42	-89.6	633.4	157.2	0.00	0.00	0.00
3,100.0	16.16	98.05	3,010.6	1,669.37	-93.5	661.0	164.1	0.00	0.00	0.00
3,200.0	16.16	98.05	3,106.7	1,573.32	-97.4	688.5	170.9	0.00	0.00	0.00
3,300.0	16.16	98.05	3,202.7	1,477.27	-101.3	716.1	177.8	0.00	0.00	0.00
3,400.0	16.16	98.05	3,298.8	1,381.22	-105.2	743.7	184.6	0.00	0.00	0.00
3,500.0	16.16	98.05	3,394.8	1,285.17	-109.1	771.2	191.4	0.00	0.00	0.00
3,600.0	16.16	98.05	3,490.9	1,189.12	-113.0	798.8	198.3	0.00	0.00	0.00
3,700.0	16.16	98.05	3,586.9	1,093.07	-116.9	826.3	205.1	0.00	0.00	0.00
PARKMAN										
3,766.7	16.16	98.05	3,651.0	1,029.00	-119.5	844.7	209.7	0.00	0.00	0.00
3,800.0	16.16	98.05	3,683.0	997.02	-120.8	853.9	212.0	0.00	0.00	0.00
3,900.0	16.16	98.05	3,779.0	900.97	-124.7	881.4	218.8	0.00	0.00	0.00
4,000.0	16.16	98.05	3,875.1	804.92	-128.6	909.0	225.7	0.00	0.00	0.00
4,100.0	16.16	98.05	3,971.1	708.87	-132.5	936.5	232.5	0.00	0.00	0.00
4,200.0	16.16	98.05	4,067.2	612.82	-136.4	964.1	239.3	0.00	0.00	0.00
4,300.0	16.16	98.05	4,163.2	516.77	-140.3	991.7	246.2	0.00	0.00	0.00
4,400.0	16.16	98.05	4,259.3	420.72	-144.1	1,019.2	253.0	0.00	0.00	0.00
4,500.0	16.16	98.05	4,355.3	324.67	-148.0	1,046.8	259.9	0.00	0.00	0.00
SUSSEX										

Database:	EDM 5000.1 Single User Db	Local Co-ordinate Reference:	Well CS-LONGMEADOW 1-1-13
Company:	EXTRACTION OIL & GAS	TVD Reference:	KB-EST @ 4680.0usft (SAV 802)
Project:	WELD COUNTY, COLORADO (NAD 83)	MD Reference:	KB-EST @ 4680.0usft (SAV 802)
Site:	SW SE SEC 36 T6N R66W 6th P.M.	North Reference:	True
Well:	CS-LONGMEADOW 1-1-13	Survey Calculation Method:	Minimum Curvature
Wellbore:	ORIGINAL WELLBORE		
Design:	PROPOSAL #1		

Planned Survey

MD (usft)	Inc (°)	Azi (°)	TVD (usft)	SS (usft)	+N/-S (usft)	+E/-W (usft)	Vertical Section (usft)	Dogleg Rate (°/100usft)	Build Rate (°/100usft)	Turn Rate (°/100usft)
4,563.2	16.16	98.05	4,416.0	264.00	-150.5	1,064.2	264.2	0.00	0.00	0.00
4,600.0	16.16	98.05	4,451.4	228.63	-151.9	1,074.3	266.7	0.00	0.00	0.00
4,700.0	16.16	98.05	4,547.4	132.58	-155.8	1,101.9	273.5	0.00	0.00	0.00
4,800.0	16.16	98.05	4,643.5	36.53	-159.7	1,129.4	280.4	0.00	0.00	0.00
4,900.0	16.16	98.05	4,739.5	-59.52	-163.6	1,157.0	287.2	0.00	0.00	0.00
5,000.0	16.16	98.05	4,835.6	-155.57	-167.5	1,184.6	294.1	0.00	0.00	0.00
SHANNON										
5,017.1	16.16	98.05	4,852.0	-172.00	-168.2	1,189.3	295.2	0.00	0.00	0.00
5,100.0	16.16	98.05	4,931.6	-251.62	-171.4	1,212.1	300.9	0.00	0.00	0.00
5,200.0	16.16	98.05	5,027.7	-347.67	-175.3	1,239.7	307.7	0.00	0.00	0.00
5,300.0	16.16	98.05	5,123.7	-443.72	-179.2	1,267.2	314.6	0.00	0.00	0.00
5,400.0	16.16	98.05	5,219.8	-539.77	-183.1	1,294.8	321.4	0.00	0.00	0.00
5,500.0	16.16	98.05	5,315.8	-635.82	-187.0	1,322.3	328.3	0.00	0.00	0.00
5,600.0	16.16	98.05	5,411.9	-731.87	-190.9	1,349.9	335.1	0.00	0.00	0.00
5,700.0	16.16	98.05	5,507.9	-827.92	-194.8	1,377.4	341.9	0.00	0.00	0.00
END OF TANGENT										
5,783.1	16.16	98.05	5,587.7	-907.73	-198.1	1,400.3	347.6	0.00	0.00	0.00
5,800.0	15.82	98.05	5,604.0	-923.98	-198.7	1,405.0	348.8	2.00	-2.00	0.00
5,900.0	13.82	98.05	5,700.6	-1,020.65	-202.3	1,430.3	355.1	2.00	-2.00	0.00
6,000.0	11.82	98.05	5,798.2	-1,118.15	-205.4	1,452.2	360.5	2.00	-2.00	0.00
6,100.0	9.82	98.05	5,896.4	-1,216.37	-208.0	1,470.8	365.1	2.00	-2.00	0.00
6,200.0	7.82	98.05	5,995.2	-1,315.18	-210.2	1,486.0	368.9	2.00	-2.00	0.00
6,300.0	5.82	98.05	6,094.5	-1,414.47	-211.8	1,497.8	371.8	2.00	-2.00	0.00
6,400.0	3.82	98.05	6,194.1	-1,514.11	-213.0	1,506.1	373.9	2.00	-2.00	0.00
6,500.0	1.82	98.05	6,294.0	-1,613.98	-213.7	1,511.0	375.1	2.00	-2.00	0.00
EOD TO VERTICAL										
6,591.0	0.00	0.00	6,385.0	-1,705.00	-213.9	1,512.4	375.4	2.00	-2.00	0.00
6,600.0	0.00	0.00	6,394.0	-1,713.97	-213.9	1,512.4	375.4	0.00	0.00	0.00
KOP (10°/100ft BUR)										
6,621.0	0.00	0.00	6,415.0	-1,735.00	-213.9	1,512.4	375.4	0.00	0.00	0.00
6,700.0	7.90	180.08	6,493.7	-1,813.72	-219.3	1,512.4	380.8	10.00	10.00	0.00
6,800.0	17.90	180.08	6,591.1	-1,911.07	-241.6	1,512.4	403.0	10.00	10.00	0.00
6,900.0	27.89	180.08	6,683.1	-2,003.08	-280.5	1,512.3	441.6	10.00	10.00	0.00
7,000.0	37.89	180.08	6,766.9	-2,086.94	-334.7	1,512.2	495.5	10.00	10.00	0.00
7,100.0	47.89	180.08	6,840.1	-2,160.11	-402.7	1,512.1	563.1	10.00	10.00	0.00
NIOBRARA										
7,127.4	50.64	180.08	6,858.0	-2,178.00	-423.5	1,512.1	583.8	10.00	10.00	0.00
7,200.0	57.89	180.08	6,900.4	-2,220.36	-482.3	1,512.0	642.3	10.00	10.00	0.00
7,300.0	67.89	180.08	6,945.9	-2,265.87	-571.2	1,511.9	730.7	10.00	10.00	0.00
7,400.0	77.89	180.08	6,975.3	-2,295.25	-666.7	1,511.7	825.5	10.00	10.00	0.00
7,500.0	87.89	180.08	6,987.6	-2,307.61	-765.8	1,511.6	924.1	10.00	10.00	0.00
LANDING PNT - CS-LONGMEADOW 1-1-13										
7,521.1	90.00	180.08	6,988.0	-2,308.00	-786.9	1,511.6	945.0	10.00	10.00	0.00
7,600.0	90.00	180.08	6,988.0	-2,308.00	-865.8	1,511.4	1,023.5	0.00	0.00	0.00
7,700.0	90.00	180.08	6,988.0	-2,308.01	-965.8	1,511.3	1,122.9	0.00	0.00	0.00
7,800.0	90.00	180.08	6,988.0	-2,308.02	-1,065.8	1,511.2	1,222.3	0.00	0.00	0.00
7,900.0	90.00	180.08	6,988.0	-2,308.02	-1,165.8	1,511.0	1,321.7	0.00	0.00	0.00
8,000.0	90.00	180.08	6,988.0	-2,308.03	-1,265.8	1,510.9	1,421.1	0.00	0.00	0.00
8,100.0	90.00	180.08	6,988.0	-2,308.03	-1,365.8	1,510.7	1,520.5	0.00	0.00	0.00
8,200.0	90.00	180.08	6,988.0	-2,308.04	-1,465.8	1,510.6	1,619.9	0.00	0.00	0.00
8,300.0	90.00	180.08	6,988.0	-2,308.05	-1,565.8	1,510.4	1,719.3	0.00	0.00	0.00
8,400.0	90.00	180.08	6,988.1	-2,308.05	-1,665.8	1,510.3	1,818.7	0.00	0.00	0.00
8,500.0	90.00	180.08	6,988.1	-2,308.06	-1,765.8	1,510.1	1,918.1	0.00	0.00	0.00

Database:	EDM 5000.1 Single User Db	Local Co-ordinate Reference:	Well CS-LONGMEADOW 1-1-13
Company:	EXTRACTION OIL & GAS	TVD Reference:	KB-EST @ 4680.0usft (SAV 802)
Project:	WELD COUNTY, COLORADO (NAD 83)	MD Reference:	KB-EST @ 4680.0usft (SAV 802)
Site:	SW SE SEC 36 T6N R66W 6th P.M.	North Reference:	True
Well:	CS-LONGMEADOW 1-1-13	Survey Calculation Method:	Minimum Curvature
Wellbore:	ORIGINAL WELLBORE		
Design:	PROPOSAL #1		

Planned Survey

MD (usft)	Inc (°)	Azi (°)	TVD (usft)	SS (usft)	+N/-S (usft)	+E/-W (usft)	Vertical Section (usft)	Dogleg Rate (°/100usft)	Build Rate (°/100usft)	Turn Rate (°/100usft)
8,600.0	90.00	180.08	6,988.1	-2,308.06	-1,865.8	1,510.0	2,017.5	0.00	0.00	0.00
8,700.0	90.00	180.08	6,988.1	-2,308.07	-1,965.8	1,509.8	2,116.9	0.00	0.00	0.00
8,800.0	90.00	180.08	6,988.1	-2,308.07	-2,065.8	1,509.7	2,216.3	0.00	0.00	0.00
8,900.0	90.00	180.08	6,988.1	-2,308.08	-2,165.8	1,509.5	2,315.7	0.00	0.00	0.00
9,000.0	90.00	180.08	6,988.1	-2,308.08	-2,265.8	1,509.4	2,415.1	0.00	0.00	0.00
9,100.0	90.00	180.08	6,988.1	-2,308.09	-2,365.8	1,509.3	2,514.5	0.00	0.00	0.00
9,200.0	90.00	180.08	6,988.1	-2,308.09	-2,465.8	1,509.1	2,613.9	0.00	0.00	0.00
9,300.0	90.00	180.08	6,988.1	-2,308.10	-2,565.8	1,509.0	2,713.3	0.00	0.00	0.00
9,400.0	90.00	180.08	6,988.1	-2,308.10	-2,665.8	1,508.8	2,812.7	0.00	0.00	0.00
9,500.0	90.00	180.08	6,988.1	-2,308.11	-2,765.8	1,508.7	2,912.1	0.00	0.00	0.00
9,600.0	90.00	180.08	6,988.1	-2,308.11	-2,865.8	1,508.5	3,011.5	0.00	0.00	0.00
9,700.0	90.00	180.08	6,988.1	-2,308.11	-2,965.8	1,508.4	3,110.9	0.00	0.00	0.00
9,800.0	90.00	180.08	6,988.1	-2,308.12	-3,065.8	1,508.2	3,210.3	0.00	0.00	0.00
9,900.0	90.00	180.08	6,988.1	-2,308.12	-3,165.8	1,508.1	3,309.7	0.00	0.00	0.00
10,000.0	90.00	180.08	6,988.1	-2,308.13	-3,265.8	1,507.9	3,409.1	0.00	0.00	0.00
10,100.0	90.00	180.08	6,988.1	-2,308.13	-3,365.8	1,507.8	3,508.5	0.00	0.00	0.00
10,200.0	90.00	180.08	6,988.1	-2,308.13	-3,465.8	1,507.7	3,607.9	0.00	0.00	0.00
10,300.0	90.00	180.08	6,988.1	-2,308.14	-3,565.8	1,507.5	3,707.3	0.00	0.00	0.00
10,400.0	90.00	180.08	6,988.1	-2,308.14	-3,665.8	1,507.4	3,806.7	0.00	0.00	0.00
10,500.0	90.00	180.08	6,988.1	-2,308.15	-3,765.8	1,507.2	3,906.1	0.00	0.00	0.00
10,600.0	90.00	180.08	6,988.1	-2,308.15	-3,865.8	1,507.1	4,005.6	0.00	0.00	0.00
10,700.0	90.00	180.08	6,988.2	-2,308.15	-3,965.8	1,506.9	4,105.0	0.00	0.00	0.00
10,800.0	90.00	180.08	6,988.2	-2,308.15	-4,065.8	1,506.8	4,204.4	0.00	0.00	0.00
10,900.0	90.00	180.08	6,988.2	-2,308.16	-4,165.8	1,506.6	4,303.8	0.00	0.00	0.00
11,000.0	90.00	180.08	6,988.2	-2,308.16	-4,265.8	1,506.5	4,403.2	0.00	0.00	0.00
11,100.0	90.00	180.08	6,988.2	-2,308.16	-4,365.8	1,506.3	4,502.6	0.00	0.00	0.00
11,200.0	90.00	180.08	6,988.2	-2,308.17	-4,465.8	1,506.2	4,602.0	0.00	0.00	0.00
11,300.0	90.00	180.08	6,988.2	-2,308.17	-4,565.8	1,506.1	4,701.4	0.00	0.00	0.00
11,400.0	90.00	180.08	6,988.2	-2,308.17	-4,665.8	1,505.9	4,800.8	0.00	0.00	0.00
11,500.0	90.00	180.08	6,988.2	-2,308.17	-4,765.8	1,505.8	4,900.2	0.00	0.00	0.00
11,600.0	90.00	180.08	6,988.2	-2,308.18	-4,865.8	1,505.6	4,999.6	0.00	0.00	0.00
11,700.0	90.00	180.08	6,988.2	-2,308.18	-4,965.8	1,505.5	5,099.0	0.00	0.00	0.00
11,800.0	90.00	180.08	6,988.2	-2,308.18	-5,065.8	1,505.3	5,198.4	0.00	0.00	0.00
11,900.0	90.00	180.08	6,988.2	-2,308.18	-5,165.8	1,505.2	5,297.8	0.00	0.00	0.00
12,000.0	90.00	180.08	6,988.2	-2,308.19	-5,265.8	1,505.0	5,397.2	0.00	0.00	0.00
12,100.0	90.00	180.08	6,988.2	-2,308.19	-5,365.8	1,504.9	5,496.6	0.00	0.00	0.00
12,200.0	90.00	180.08	6,988.2	-2,308.19	-5,465.8	1,504.8	5,596.0	0.00	0.00	0.00
12,300.0	90.00	180.08	6,988.2	-2,308.19	-5,565.8	1,504.6	5,695.4	0.00	0.00	0.00
12,400.0	90.00	180.08	6,988.2	-2,308.19	-5,665.8	1,504.5	5,794.8	0.00	0.00	0.00
12,500.0	90.00	180.08	6,988.2	-2,308.19	-5,765.8	1,504.3	5,894.2	0.00	0.00	0.00
12,600.0	90.00	180.08	6,988.2	-2,308.20	-5,865.8	1,504.2	5,993.6	0.00	0.00	0.00
12,700.0	90.00	180.08	6,988.2	-2,308.20	-5,965.8	1,504.0	6,093.0	0.00	0.00	0.00
12,800.0	90.00	180.08	6,988.2	-2,308.20	-6,065.8	1,503.9	6,192.4	0.00	0.00	0.00
12,900.0	90.00	180.08	6,988.2	-2,308.20	-6,165.8	1,503.7	6,291.8	0.00	0.00	0.00
13,000.0	90.00	180.08	6,988.2	-2,308.20	-6,265.8	1,503.6	6,391.2	0.00	0.00	0.00
13,100.0	90.00	180.08	6,988.2	-2,308.20	-6,365.8	1,503.5	6,490.6	0.00	0.00	0.00
13,200.0	90.00	180.08	6,988.2	-2,308.20	-6,465.8	1,503.3	6,590.0	0.00	0.00	0.00
13,300.0	90.00	180.08	6,988.2	-2,308.20	-6,565.8	1,503.2	6,689.4	0.00	0.00	0.00
13,400.0	90.00	180.08	6,988.2	-2,308.20	-6,665.8	1,503.0	6,788.8	0.00	0.00	0.00
13,500.0	90.00	180.08	6,988.2	-2,308.20	-6,765.8	1,502.9	6,888.2	0.00	0.00	0.00
13,600.0	90.00	180.08	6,988.2	-2,308.20	-6,865.8	1,502.7	6,987.7	0.00	0.00	0.00
13,700.0	90.00	180.08	6,988.2	-2,308.20	-6,965.8	1,502.6	7,087.1	0.00	0.00	0.00
13,800.0	90.00	180.08	6,988.2	-2,308.21	-7,065.8	1,502.4	7,186.5	0.00	0.00	0.00
13,900.0	90.00	180.08	6,988.2	-2,308.21	-7,165.8	1,502.3	7,285.9	0.00	0.00	0.00

Planning Report



Database:	EDM 5000.1 Single User Db	Local Co-ordinate Reference:	Well CS-LONGMEADOW 1-1-13
Company:	EXTRACTION OIL & GAS	TVD Reference:	KB-EST @ 4680.0usft (SAV 802)
Project:	WELD COUNTY, COLORADO (NAD 83)	MD Reference:	KB-EST @ 4680.0usft (SAV 802)
Site:	SW SE SEC 36 T6N R66W 6th P.M.	North Reference:	True
Well:	CS-LONGMEADOW 1-1-13	Survey Calculation Method:	Minimum Curvature
Wellbore:	ORIGINAL WELLBORE		
Design:	PROPOSAL #1		

Planned Survey										
MD (usft)	Inc (°)	Azi (°)	TVD (usft)	SS (usft)	+N/-S (usft)	+E/-W (usft)	Vertical Section (usft)	Dogleg Rate (°/100usft)	Build Rate (°/100usft)	Turn Rate (°/100usft)
14,000.0	90.00	180.08	6,988.2	-2,308.21	-7,265.8	1,502.2	7,385.3	0.00	0.00	0.00
14,100.0	90.00	180.08	6,988.2	-2,308.21	-7,365.8	1,502.0	7,484.7	0.00	0.00	0.00
14,200.0	90.00	180.08	6,988.2	-2,308.21	-7,465.8	1,501.9	7,584.1	0.00	0.00	0.00
14,300.0	90.00	180.08	6,988.2	-2,308.20	-7,565.8	1,501.7	7,683.5	0.00	0.00	0.00
14,400.0	90.00	180.08	6,988.2	-2,308.20	-7,665.8	1,501.6	7,782.9	0.00	0.00	0.00
14,500.0	90.00	180.08	6,988.2	-2,308.20	-7,765.8	1,501.4	7,882.3	0.00	0.00	0.00
14,600.0	90.00	180.08	6,988.2	-2,308.20	-7,865.8	1,501.3	7,981.7	0.00	0.00	0.00
14,700.0	90.00	180.08	6,988.2	-2,308.20	-7,965.8	1,501.1	8,081.1	0.00	0.00	0.00
14,800.0	90.00	180.08	6,988.2	-2,308.20	-8,065.8	1,501.0	8,180.5	0.00	0.00	0.00
14,900.0	90.00	180.08	6,988.2	-2,308.20	-8,165.8	1,500.9	8,279.9	0.00	0.00	0.00
15,000.0	90.00	180.08	6,988.2	-2,308.20	-8,265.8	1,500.7	8,379.3	0.00	0.00	0.00
15,100.0	90.00	180.08	6,988.2	-2,308.20	-8,365.8	1,500.6	8,478.7	0.00	0.00	0.00
15,200.0	90.00	180.08	6,988.2	-2,308.20	-8,465.8	1,500.4	8,578.1	0.00	0.00	0.00
15,300.0	90.00	180.08	6,988.2	-2,308.20	-8,565.8	1,500.3	8,677.5	0.00	0.00	0.00
15,400.0	90.00	180.08	6,988.2	-2,308.20	-8,665.8	1,500.1	8,776.9	0.00	0.00	0.00
15,500.0	90.00	180.08	6,988.2	-2,308.19	-8,765.8	1,500.0	8,876.3	0.00	0.00	0.00
15,600.0	90.00	180.08	6,988.2	-2,308.19	-8,865.8	1,499.9	8,975.7	0.00	0.00	0.00
15,700.0	90.00	180.08	6,988.2	-2,308.19	-8,965.8	1,499.7	9,075.1	0.00	0.00	0.00
15,800.0	90.00	180.08	6,988.2	-2,308.19	-9,065.8	1,499.6	9,174.5	0.00	0.00	0.00
15,900.0	90.00	180.08	6,988.2	-2,308.19	-9,165.8	1,499.4	9,273.9	0.00	0.00	0.00
16,000.0	90.00	180.08	6,988.2	-2,308.19	-9,265.8	1,499.3	9,373.3	0.00	0.00	0.00
16,100.0	90.00	180.08	6,988.2	-2,308.18	-9,365.8	1,499.1	9,472.7	0.00	0.00	0.00
16,200.0	90.00	180.08	6,988.2	-2,308.18	-9,465.8	1,499.0	9,572.1	0.00	0.00	0.00
16,300.0	90.00	180.08	6,988.2	-2,308.18	-9,565.8	1,498.9	9,671.5	0.00	0.00	0.00
16,400.0	90.00	180.08	6,988.2	-2,308.18	-9,665.8	1,498.7	9,771.0	0.00	0.00	0.00
16,500.0	90.00	180.08	6,988.2	-2,308.18	-9,765.8	1,498.6	9,870.4	0.00	0.00	0.00
16,600.0	90.00	180.08	6,988.2	-2,308.17	-9,865.8	1,498.4	9,969.8	0.00	0.00	0.00
16,700.0	90.00	180.08	6,988.2	-2,308.17	-9,965.8	1,498.3	10,069.2	0.00	0.00	0.00
16,800.0	90.00	180.08	6,988.2	-2,308.17	-10,065.8	1,498.1	10,168.6	0.00	0.00	0.00
16,900.0	90.00	180.08	6,988.2	-2,308.17	-10,165.8	1,498.0	10,268.0	0.00	0.00	0.00
17,000.0	90.00	180.08	6,988.2	-2,308.16	-10,265.8	1,497.9	10,367.4	0.00	0.00	0.00
17,100.0	90.00	180.08	6,988.2	-2,308.16	-10,365.8	1,497.7	10,466.8	0.00	0.00	0.00
17,200.0	90.00	180.08	6,988.2	-2,308.16	-10,465.8	1,497.6	10,566.2	0.00	0.00	0.00
17,300.0	90.00	180.08	6,988.2	-2,308.15	-10,565.8	1,497.4	10,665.6	0.00	0.00	0.00
17,400.0	90.00	180.08	6,988.1	-2,308.15	-10,665.8	1,497.3	10,765.0	0.00	0.00	0.00
17,500.0	90.00	180.08	6,988.1	-2,308.15	-10,765.8	1,497.1	10,864.4	0.00	0.00	0.00
17,600.0	90.00	180.08	6,988.1	-2,308.14	-10,865.8	1,497.0	10,963.8	0.00	0.00	0.00
17,700.0	90.00	180.08	6,988.1	-2,308.14	-10,965.8	1,496.9	11,063.2	0.00	0.00	0.00
17,800.0	90.00	180.08	6,988.1	-2,308.14	-11,065.8	1,496.7	11,162.6	0.00	0.00	0.00
17,900.0	90.00	180.08	6,988.1	-2,308.13	-11,165.8	1,496.6	11,262.0	0.00	0.00	0.00
18,000.0	90.00	180.08	6,988.1	-2,308.13	-11,265.8	1,496.4	11,361.4	0.00	0.00	0.00
18,100.0	90.00	180.08	6,988.1	-2,308.12	-11,365.8	1,496.3	11,460.8	0.00	0.00	0.00
18,200.0	90.00	180.08	6,988.1	-2,308.12	-11,465.8	1,496.2	11,560.2	0.00	0.00	0.00
18,300.0	90.00	180.08	6,988.1	-2,308.12	-11,565.8	1,496.0	11,659.6	0.00	0.00	0.00
18,400.0	90.00	180.08	6,988.1	-2,308.11	-11,665.8	1,495.9	11,759.0	0.00	0.00	0.00
18,500.0	90.00	180.08	6,988.1	-2,308.11	-11,765.8	1,495.7	11,858.4	0.00	0.00	0.00
18,600.0	90.00	180.08	6,988.1	-2,308.10	-11,865.8	1,495.6	11,957.8	0.00	0.00	0.00
18,700.0	90.00	180.08	6,988.1	-2,308.10	-11,965.8	1,495.4	12,057.2	0.00	0.00	0.00
18,800.0	90.00	180.08	6,988.1	-2,308.09	-12,065.8	1,495.3	12,156.6	0.00	0.00	0.00
18,900.0	90.00	180.08	6,988.1	-2,308.09	-12,165.8	1,495.2	12,256.0	0.00	0.00	0.00
19,000.0	90.00	180.08	6,988.1	-2,308.08	-12,265.8	1,495.0	12,355.4	0.00	0.00	0.00
19,100.0	90.00	180.08	6,988.1	-2,308.08	-12,365.8	1,494.9	12,454.9	0.00	0.00	0.00
19,200.0	90.00	180.08	6,988.1	-2,308.08	-12,465.8	1,494.7	12,554.3	0.00	0.00	0.00
19,300.0	90.00	180.08	6,988.1	-2,308.07	-12,565.8	1,494.6	12,653.7	0.00	0.00	0.00

Database:	EDM 5000.1 Single User Db	Local Co-ordinate Reference:	Well CS-LONGMEADOW 1-1-13
Company:	EXTRACTION OIL & GAS	TVD Reference:	KB-EST @ 4680.0usft (SAV 802)
Project:	WELD COUNTY, COLORADO (NAD 83)	MD Reference:	KB-EST @ 4680.0usft (SAV 802)
Site:	SW SE SEC 36 T6N R66W 6th P.M.	North Reference:	True
Well:	CS-LONGMEADOW 1-1-13	Survey Calculation Method:	Minimum Curvature
Wellbore:	ORIGINAL WELLBORE		
Design:	PROPOSAL #1		

Planned Survey

MD (usft)	Inc (°)	Azi (°)	TVD (usft)	SS (usft)	+N/-S (usft)	+E/-W (usft)	Vertical Section (usft)	Dogleg Rate (°/100usft)	Build Rate (°/100usft)	Turn Rate (°/100usft)
19,400.0	90.00	180.08	6,988.1	-2,308.06	-12,665.8	1,494.4	12,753.1	0.00	0.00	0.00
19,500.0	90.00	180.08	6,988.1	-2,308.06	-12,765.8	1,494.3	12,852.5	0.00	0.00	0.00
19,600.0	90.00	180.08	6,988.1	-2,308.05	-12,865.8	1,494.2	12,951.9	0.00	0.00	0.00
19,700.0	90.00	180.08	6,988.0	-2,308.05	-12,965.8	1,494.0	13,051.3	0.00	0.00	0.00
19,800.0	90.00	180.08	6,988.0	-2,308.04	-13,065.8	1,493.9	13,150.7	0.00	0.00	0.00
19,900.0	90.00	180.08	6,988.0	-2,308.04	-13,165.8	1,493.7	13,250.1	0.00	0.00	0.00
20,000.0	90.00	180.08	6,988.0	-2,308.03	-13,265.8	1,493.6	13,349.5	0.00	0.00	0.00
20,100.0	90.00	180.08	6,988.0	-2,308.03	-13,365.8	1,493.5	13,448.9	0.00	0.00	0.00
20,200.0	90.00	180.08	6,988.0	-2,308.02	-13,465.8	1,493.3	13,548.3	0.00	0.00	0.00
20,300.0	90.00	180.08	6,988.0	-2,308.01	-13,565.8	1,493.2	13,647.7	0.00	0.00	0.00
20,400.0	90.00	180.08	6,988.0	-2,308.01	-13,665.8	1,493.0	13,747.1	0.00	0.00	0.00
20,500.0	90.00	180.08	6,988.0	-2,308.00	-13,765.8	1,492.9	13,846.5	0.00	0.00	0.00
BHL - CS-LONGMEADOW 1-1-13										
20,523.4	90.00	180.08	6,988.0	-2,308.00	-13,789.2	1,492.9	13,869.7	0.00	0.00	0.00

Formations

MD (usft)	TVD (usft)	Name	Lithology	Dip (°)	Dip Direction (°)
3,766.7	3,651.0	PARKMAN			
4,563.2	4,416.0	SUSSEX			
5,017.1	4,852.0	SHANNON			
7,127.4	6,858.0	NIOBRARA			

Plan Annotations

MD (usft)	TVD (usft)	Local Coordinates		Comment
		+N/-S (usft)	+E/-W (usft)	
300.0	300.0	0.0	0.0	START NUDGE (2°/100ft BUR)
1,107.9	1,097.3	-15.8	112.1	EOB TO 16.16° INC
1,839.6	1,800.0	-44.4	313.7	9 5/8" SURFACE CSG
5,783.1	5,587.7	-198.1	1,400.3	END OF TANGENT
6,591.0	6,385.0	-213.9	1,512.4	EOD TO VERTICAL
6,621.0	6,415.0	-213.9	1,512.4	KOP (10°/100ft BUR)
7,521.1	6,988.0	-786.9	1,511.6	LANDING PNT - CS-LONGMEADOW 1-1-13
20,523.4	6,988.0	-13,789.2	1,492.9	BHL - CS-LONGMEADOW 1-1-13