

# **LEGEND:**

 **PROPOSED LOCATION**



**EOG RESOURCES, INC.**

**GARDEN CREEK 18 SWSE**  
**SW 1/4 SE 1/4, SECTION 18, T11N, R62W, 6th P.M.**  
**WELD COUNTY, COLORADO**

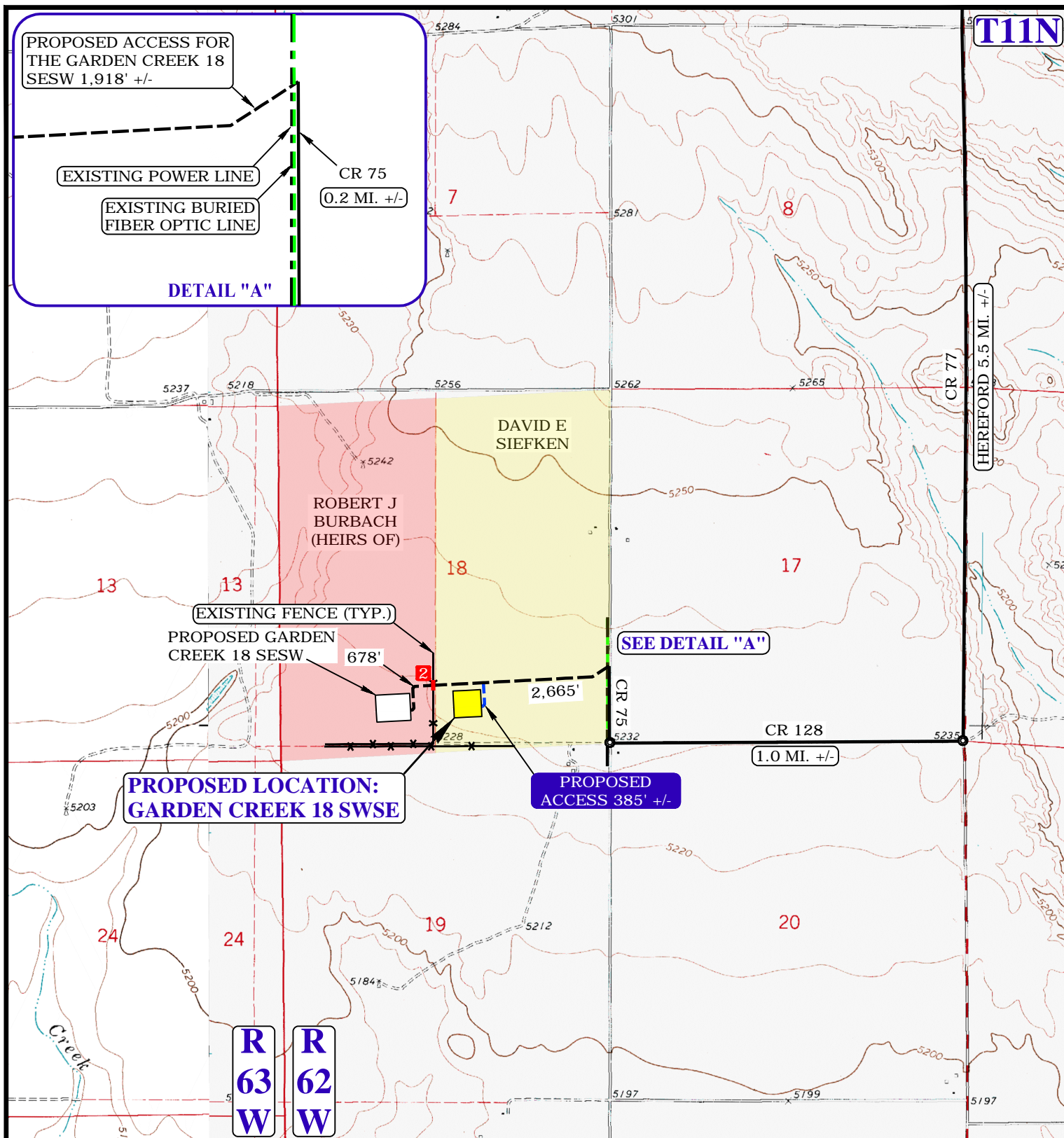
<b>DRAWN BY:</b> R.C.	<b>DATE DRAWN:</b> 04-29-15
<b>SCALE:</b> 1:100,000	<b>REVISED:</b> 00-00-00

**ACCESS ROAD MAP**

**TOPO A**



**UELS, LLC**  
 Corporate Office \* 85 South 200 East  
 Vernal, UT 84078 \* (435) 789-1017



NOTE: PARCEL DATA SHOWN HAS BEEN OBTAINED FROM VARIOUS SOURCES AND SHOULD BE USED FOR MAPPING, GRAPHIC AND PLANNING PURPOSES ONLY. NO WARRANTY IS MADE BY UTAH ENGINEERING AND LAND SURVEYING (UELS) FOR ACCURACY OF THE PARCEL DATA.

#### LEGEND:

- EXISTING ROAD
- - - PROPOSED ROAD
- - - EXISTING POWER LINE
- - - EXISTING BURIED FIBER OPTIC LINE
- - - EXISTING FENCE
- - - PROPOSED ROAD (SERVICING OTHER WELLS)

#### EOG RESOURCES, INC.

**GARDEN CREEK 18 SWSE**  
SW 1/4 SE 1/4, SECTION 18, T11N, R62W, 6th P.M.  
WELD COUNTY, COLORADO

DRAWN BY: R.C.

DATE DRAWN: 04-29-15

SCALE: 1" = 2000'

REVISED: 00-00-00

**ACCESS ROAD MAP**

**TOPO B**



**UELS, LLC**  
Corporate Office \* 85 South 200 East  
Vernal, UT 84078 \* (435) 789-1017

