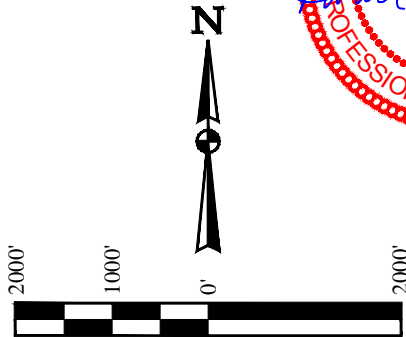


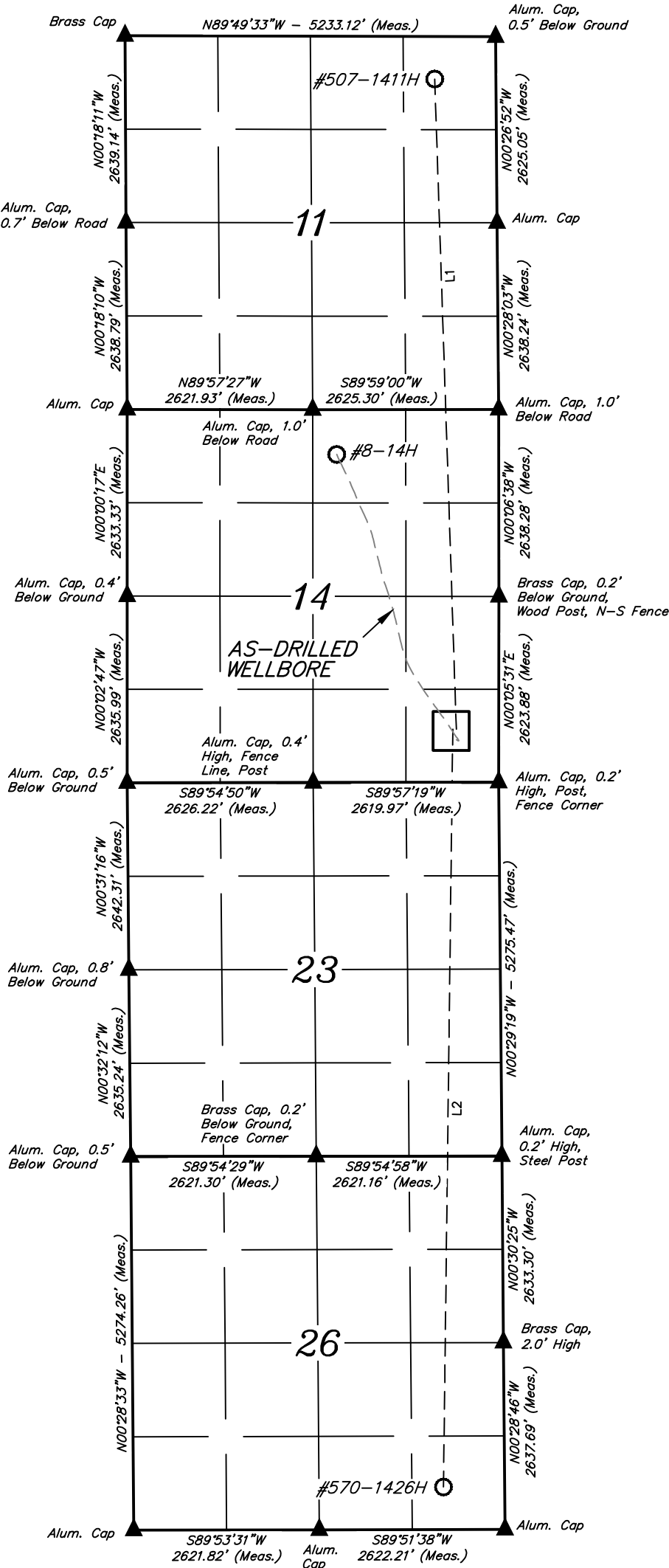
LEGEND:

- = BOTTOM HOLE.  
▲ = SECTION CORNERS LOCATED.

T11N, R63W, 6th P.M.



BASIS OF BEARINGS  
BASIS OF BEARINGS IS A G.P.S. OBSERVATION



LINE TABLE		
LINE	DIRECTION	LENGTH
L1	N01°54'18"W	9182.95'
L2	S00°42'17"W	10699.03'

WELL	SHL FOOTAGES	SECTION	TOWNSHIP	RANGE
#507-1411H	750' FSL 599' FEL	14	11N	63W
#570-1426H	751' FSL 649' FEL	14	11N	63W

WELL	BHL FOOTAGES	SECTION	TOWNSHIP	RANGE
#507-1411H	600' FNL 865' FEL	11	11N	63W
#570-1426H	600' FSL 865' FEL	26	11N	63W

EOG RESOURCES, INC.

CRITTER CREEK 14 SESE ON EXISTING  
CRITTER CREEK 8-14H WELL PAD  
SE 1/4 SE 1/4, SECTION 14, T11N, R63W, 6th P.M.  
WELD COUNTY, COLORADO



UELS, LLC  
Corporate Office \* 85 South 200 East  
Vernal, UT 84078 \* (435) 789-1017

DRAWN BY: S.F.	DATE DRAWN: 04-01-15
SCALE: 1" = 2000'	REVISED: 08-02-15 J.W.
MULTI-WELL PLAN	FIGURE #6