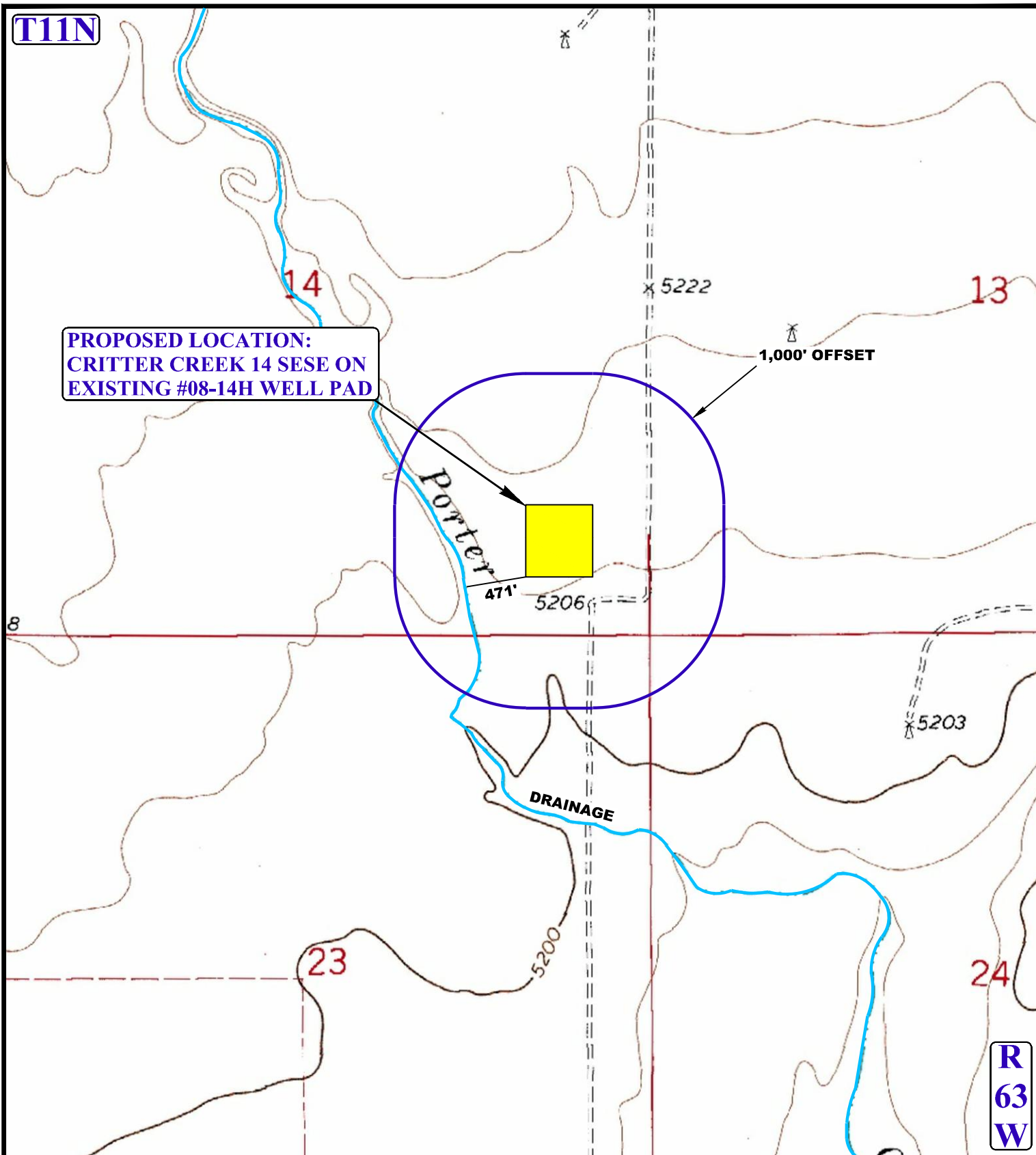


T11N



LEGEND:

- EXISTING DRAINAGE
- 1000' OFFSET BOUNDARY

EOG RESOURCES, INC.

**CRITTER CREEK 14 SESE
ON EXISTING #08-14H WELL PAD
SE 1/4 SE 1/4, SECTION 14, T11N, R63W, 6th P.M.
WELD COUNTY, COLORADO**

DRAWN BY: R.C.

DATE DRAWN: 03-31-15

SCALE: 1" = 1000'

REVISED: 00-00-00

HYDROLOGY MAP

TOPO W



UELS, LLC

Corporate Office * 85 South 200 East
Vernal, UT 84078 * (435) 789-1017

