

FINISHED GRADE ELEVATION = 5213.8'


NOTES:

- Flare Stack is to be located a min. of 100' from the wellhead.
- Construct diversion ditches as needed.
- Contours shown at 2' intervals.
- Underground utilities shown on this sheet are for visualization purposes only, actual locations to be determined prior to construction.
- Re-Route existing utilities as needed.

NOTE: Earthwork Calculations Require a Fill @ Some Location Stakes For Balance. All Fill is to be Compacted to a Minimum of 95% of the Maximum Dry Density Obtained by AASHTO Method t-99.

EOG RESOURCES, INC.

CRITTER CREEK 14 SESE ON EXISTING
CRITTER CREEK 8-14H WELL PAD
SE 1/4 SE 1/4, SECTION 14, T11N, R63W, 6th P.M.
WELD COUNTY, COLORADO

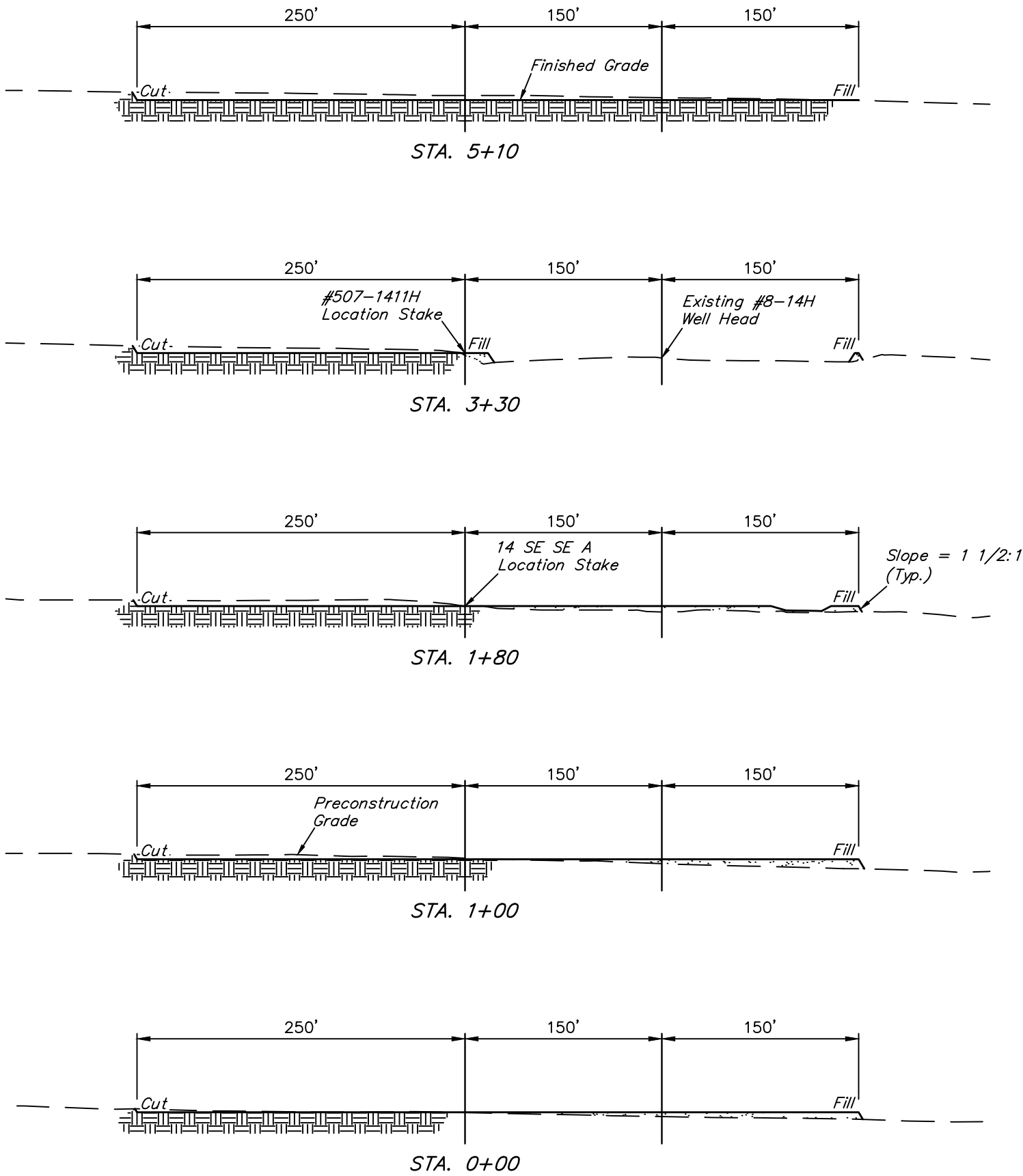


UELS, LLC
Corporate Office * 85 South 200 East
Vernal, UT 84078 * (435) 789-1017

DRAWN BY: S.F.	DATE DRAWN: 04-01-15
SCALE: 1" = 80'	REVISED: 00-00-00

CONSTRUCTION LAYOUT**FIGURE #1**

1" = 40'
X-Section
Scale
1" = 100'



APPROXIMATE EARTHWORK QUANTITIES	
(6") TOPSOIL STRIPPING (NEW CONSTRUCTION ONLY)	4,230 Cu. Yds.
REMAINING LOCATION	5,070 Cu. Yds.
TOTAL CUT	9,300 Cu. Yds.
FILL	5,070 Cu. Yds.
EXCESS MATERIAL	4,230 Cu. Yds.
TOPSOIL	4,230 Cu. Yds.
EXCESS UNBALANCE (After Interim Rehabilitation)	0 Cu. Yds.

APPROXIMATE SURFACE DISTURBANCE AREAS		
	DISTANCE	ACRES
WELL SITE DISTURBANCE (NEW CONSTRUCTION ONLY)	NA	±6.168
TOTAL SURFACE USE AREA		±6.168

- NOTES:**
- Fill quantity includes 5% for compaction.
 - Calculations based on 6" of topsoil stripping.
 - Topsoil should not be stripped below finished grade on substructure area.

EOG RESOURCES, INC.

CRITTER CREEK 14 SESE ON EXISTING
CRITTER CREEK 8-14H WELL PAD
SE 1/4 SE 1/4, SECTION 14, T11N, R63W, 6th P.M.
WELD COUNTY, COLORADO



UELS, LLC
Corporate Office * 85 South 200 East
Vernal, UT 84078 * (435) 789-1017

DRAWN BY: S.F.	DATE DRAWN: 04-01-15
SCALE: AS SHOWN	REVISED: 00-00-00
CONSTRUCTION LAYOUT CROSS SECTIONS	FIGURE #2