

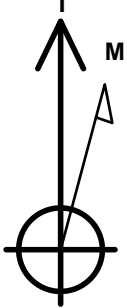
Bayswater Exploration & Production, LLC

Well Name: Albrighton E-10HC

Surface Location: Albrighton Pad Sec.10-T6N-R64W  
North American Datum 1983 , US State Plane 1983 , Colorado Northern Zone  
Ground Elevation: 4807.0  
+N/-S +E/-W Northing Easting Latitude Longitude Slot  
0.0 0.0 1425196.66 3266543.47 40.496612 -104.541583  
RKB - 22.5' WELL @ 4829.5ft (RKB - 22.5')

WELLBORE TARGET DETAILS

Name	TVD	+N/-S	+E/-W	Shape
SHL 1170'FSL, 1152'FWL	1.0	0.0	0.0	Point
BHL 470'FNL, 1015'FWL	7024.5	3659.6	-92.9	Point
LPL 573'FSL, 1015'FWL	7024.5	-597.0	-146.0	Point

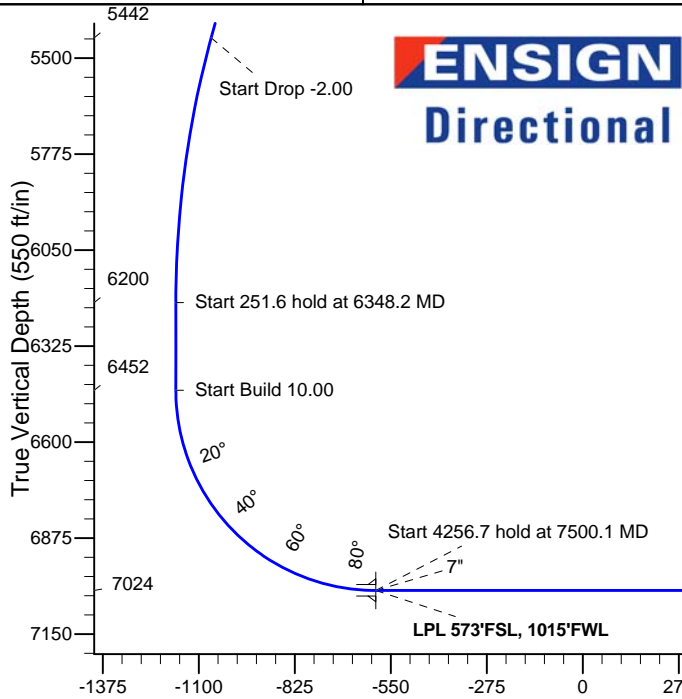
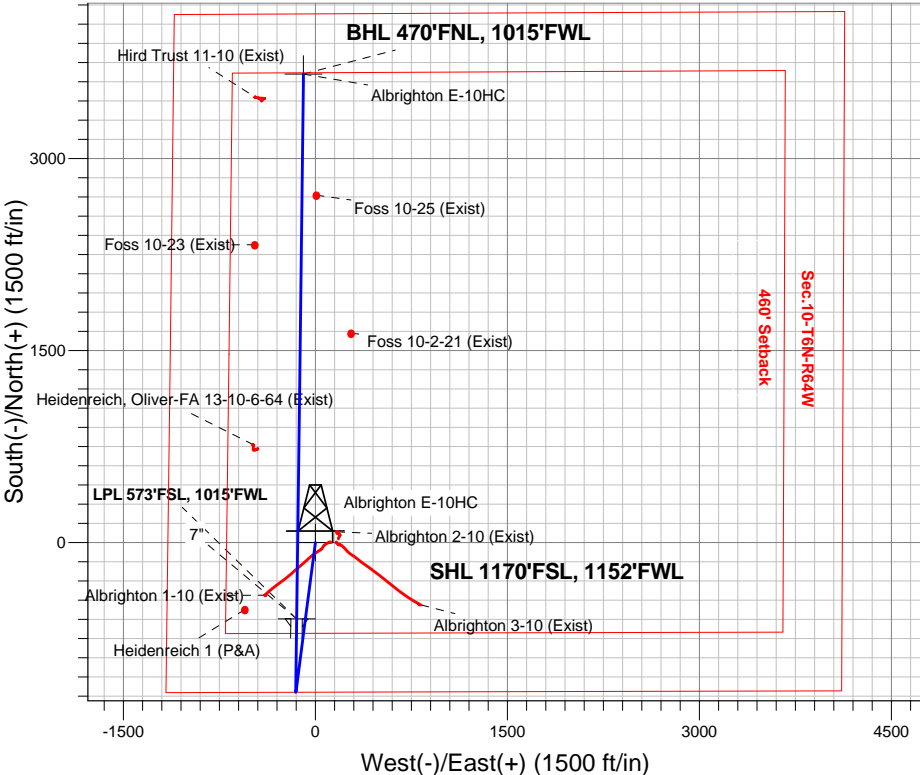


Azimuths to True North  
Magnetic North: 8.18°  
Magnetic Field  
Strength: 52761.0nT  
Dip Angle: 67.02°  
Date: 8/31/2015  
Model: IGRF2010

Albrighton Pad Sec.10-T6N-R64W  
Albrighton E-10HC  
Plan #2 (8-17-15)  
9:33, August 31 2015

ANNOTATIONS

TVD	MD	Annotation
1000.0	1000.0	KOP - Start Build 1.50
5441.8	5580.8	Start Drop -2.00
6200.0	6348.2	Start 251.6 hold at 6348.2 MD
6451.6	6599.8	Start Build 10.00
7024.5	7500.1	Start 4256.7 hold at 7500.1 MD
7024.5	11756.8	TD at 11756.8



SECTION DETAILS

Sec	MD	Inc	Azi	TVD	+N/-S	+E/-W	DLeg	TFace	VSec	Target
1	0.0	0.00	0.00	0.0	0.0	0.0	0.00	0.00	0.0	
2	1000.0	0.00	0.00	1000.0	0.0	0.0	0.00	0.00	0.0	
3	2023.2	15.35	187.46	2011.0	-135.1	-17.7	1.50	187.46	-134.6	
4	5580.8	15.35	187.46	5441.8	-1068.7	-139.9	0.00	0.00	-1064.8	
5	6348.2	0.00	0.00	6200.0	-1170.0	-153.2	2.00	180.00	-1165.7	
6	6599.8	0.00	0.00	6451.6	-1170.0	-153.2	0.00	0.00	-1165.7	
7	7499.7	90.00	0.72	7024.5	-597.1	-146.0	10.00	0.72	-593.2	
8	7499.8	90.00	0.72	7024.5	-597.0	-146.0	0.00	0.00	-593.1	LPL 573'FSL, 1015'FWL
9	7500.1	90.00	0.72	7024.5	-596.7	-146.0	1.00	-90.00	-592.8	
10	11756.8	90.00	0.72	7024.5	3659.6	-92.9	0.00	0.00	3660.8	BHL 470'FNL, 1015'FWL

Vertical Section at 358.55° (550 ft/in)



# **Bayswater Exploration & Production, LLC**

**SEC.10-T6N-R64W**

**Albrighton Pad Sec.10-T6N-R64W**

**Albrighton E-10HC**

**Wellbore #1**

**Plan: Plan #2 (8-17-15)**

## **Standard Planning Report**

**31 August, 2015**



**BAYSWATER**  
**EXPLORATION & PRODUCTION, LLC**

<b>Database:</b>	EDMNEW	<b>Local Co-ordinate Reference:</b>	Well Albrighton E-10HC
<b>Company:</b>	Bayswater Exploration & Production, LLC	<b>TVD Reference:</b>	WELL @ 4829.5ft (RKB - 22.5')
<b>Project:</b>	SEC.10-T6N-R64W	<b>MD Reference:</b>	WELL @ 4829.5ft (RKB - 22.5')
<b>Site:</b>	Albrighton Pad Sec.10-T6N-R64W	<b>North Reference:</b>	True
<b>Well:</b>	Albrighton E-10HC	<b>Survey Calculation Method:</b>	Minimum Curvature
<b>Wellbore:</b>	Wellbore #1		
<b>Design:</b>	Plan #2 (8-17-15)		

<b>Project</b>	SEC.10-T6N-R64W, Weld County, Colorado		
<b>Map System:</b>	US State Plane 1983	<b>System Datum:</b>	Mean Sea Level
<b>Geo Datum:</b>	North American Datum 1983		Using Well Reference Point
<b>Map Zone:</b>	Colorado Northern Zone		Using geodetic scale factor

Site Albrighton Pad Sec.10-T6N-R64W					
Site Position:		Northing:	1,425,196.03ft	Latitude:	40.496612
From:	Lat/Long	Easting:	3,266,483.40ft	Longitude:	-104.541799
Position Uncertainty:	0.0 ft	Slot Radius:	"	Grid Convergence:	0.62 °

Well	Albrighton E-10HC					
Well Position	+N-S	0.0 ft	Northing:	1,425,196.66 ft	Latitude:	40.496612
	+E-W	60.1 ft	Easting:	3,266,543.47 ft	Longitude:	-104.541583
Position Uncertainty		0.0 ft	Wellhead Elevation:	ft	Ground Level:	4,807.0 ft

<b>Wellbore</b>	Wellbore #1				
<b>Magnetics</b>	<b>Model Name</b>	<b>Sample Date</b>	<b>Declination (°)</b>	<b>Dip Angle (°)</b>	<b>Field Strength (nT)</b>
	IGRF2010	8/31/2015	8.18	67.02	52,761

<b>Design</b>	Plan #2 (8-17-15)			
<b>Audit Notes:</b>				
<b>Version:</b>	<b>Phase:</b>	PROTOTYPE	<b>Tie On Depth:</b>	0.0
<b>Vertical Section:</b>	<b>Depth From (TVD) (ft)</b>	<b>+N/-S (ft)</b>	<b>+E/-W (ft)</b>	<b>Direction (°)</b>
	0.0	0.0	0.0	358.55

<b>Plan Sections</b>										
Measured Depth (ft)	Inclination (°)	Azimuth (°)	Vertical Depth (ft)	+N/-S (ft)	+E/-W (ft)	Dogleg Rate (°/100ft)	Build Rate (°/100ft)	Turn Rate (°/100ft)	TFO (°)	Target
0.0	0.00	0.00	0.0	0.0	0.0	0.00	0.00	0.00	0.00	
1,000.0	0.00	0.00	1,000.0	0.0	0.0	0.00	0.00	0.00	0.00	
2,023.2	15.35	187.46	2,011.0	-135.1	-17.7	1.50	1.50	0.00	187.46	
5,580.8	15.35	187.46	5,441.8	-1,068.7	-139.9	0.00	0.00	0.00	0.00	
6,348.2	0.00	0.00	6,200.0	-1,170.0	-153.2	2.00	-2.00	0.00	180.00	
6,599.8	0.00	0.00	6,451.6	-1,170.0	-153.2	0.00	0.00	0.00	0.00	
7,499.7	90.00	0.72	7,024.5	-597.1	-146.0	10.00	10.00	0.00	0.72	
7,499.8	90.00	0.72	7,024.5	-597.0	-146.0	0.00	0.00	0.00	0.00	LPL 573'FSL, 1015'
7,500.1	90.00	0.72	7,024.5	-596.7	-146.0	1.00	0.00	-1.00	-90.00	
11,756.8	90.00	0.72	7,024.5	3,659.6	-92.9	0.00	0.00	0.00	0.00	BHL 470'FNL, 1015

<b>Database:</b>	EDMNEW	<b>Local Co-ordinate Reference:</b>	Well Albrighton E-10HC
<b>Company:</b>	Bayswater Exploration & Production, LLC	<b>TVD Reference:</b>	WELL @ 4829.5ft (RKB - 22.5')
<b>Project:</b>	SEC.10-T6N-R64W	<b>MD Reference:</b>	WELL @ 4829.5ft (RKB - 22.5')
<b>Site:</b>	Albrighton Pad Sec.10-T6N-R64W	<b>North Reference:</b>	True
<b>Well:</b>	Albrighton E-10HC	<b>Survey Calculation Method:</b>	Minimum Curvature
<b>Wellbore:</b>	Wellbore #1		
<b>Design:</b>	Plan #2 (8-17-15)		

Planned Survey									
Measured Depth (ft)	Inclination (°)	Azimuth (°)	Vertical Depth (ft)	+N/-S (ft)	+E/-W (ft)	Vertical Section (ft)	Dogleg Rate (°/100ft)	Build Rate (°/100ft)	Turn Rate (°/100ft)
0.0	0.00	0.00	0.0	0.0	0.0	0.0	0.00	0.00	0.00
1.0	0.00	0.00	1.0	0.0	0.0	0.0	0.00	0.00	0.00
<b>SHL 1170'FSL, 1152'FWL</b>									
100.0	0.00	0.00	100.0	0.0	0.0	0.0	0.00	0.00	0.00
200.0	0.00	0.00	200.0	0.0	0.0	0.0	0.00	0.00	0.00
300.0	0.00	0.00	300.0	0.0	0.0	0.0	0.00	0.00	0.00
400.0	0.00	0.00	400.0	0.0	0.0	0.0	0.00	0.00	0.00
500.0	0.00	0.00	500.0	0.0	0.0	0.0	0.00	0.00	0.00
600.0	0.00	0.00	600.0	0.0	0.0	0.0	0.00	0.00	0.00
700.0	0.00	0.00	700.0	0.0	0.0	0.0	0.00	0.00	0.00
800.0	0.00	0.00	800.0	0.0	0.0	0.0	0.00	0.00	0.00
900.0	0.00	0.00	900.0	0.0	0.0	0.0	0.00	0.00	0.00
1,000.0	0.00	0.00	1,000.0	0.0	0.0	0.0	0.00	0.00	0.00
<b>KOP - Start Build 1.50</b>									
1,100.0	1.50	187.46	1,100.0	-1.3	-0.2	-1.3	1.50	1.50	0.00
1,200.0	3.00	187.46	1,199.9	-5.2	-0.7	-5.2	1.50	1.50	0.00
1,300.0	4.50	187.46	1,299.7	-11.7	-1.5	-11.6	1.50	1.50	0.00
1,400.0	6.00	187.46	1,399.3	-20.7	-2.7	-20.7	1.50	1.50	0.00
1,500.0	7.50	187.46	1,498.6	-32.4	-4.2	-32.3	1.50	1.50	0.00
1,600.0	9.00	187.46	1,597.5	-46.6	-6.1	-46.5	1.50	1.50	0.00
1,700.0	10.50	187.46	1,696.1	-63.4	-8.3	-63.2	1.50	1.50	0.00
1,800.0	12.00	187.46	1,794.2	-82.8	-10.8	-82.5	1.50	1.50	0.00
1,900.0	13.50	187.46	1,891.7	-104.6	-13.7	-104.3	1.50	1.50	0.00
2,000.0	15.00	187.46	1,988.6	-129.1	-16.9	-128.6	1.50	1.50	0.00
2,023.2	15.35	187.46	2,011.0	-135.1	-17.7	-134.6	1.50	1.50	0.00
2,100.0	15.35	187.46	2,085.1	-155.2	-20.3	-154.7	0.00	0.00	0.00
2,200.0	15.35	187.46	2,181.5	-181.5	-23.8	-180.8	0.00	0.00	0.00
2,300.0	15.35	187.46	2,277.9	-207.7	-27.2	-207.0	0.00	0.00	0.00
2,400.0	15.35	187.46	2,374.4	-234.0	-30.6	-233.1	0.00	0.00	0.00
2,500.0	15.35	187.46	2,470.8	-260.2	-34.1	-259.3	0.00	0.00	0.00
2,600.0	15.35	187.46	2,567.2	-286.4	-37.5	-285.4	0.00	0.00	0.00
2,700.0	15.35	187.46	2,663.7	-312.7	-40.9	-311.5	0.00	0.00	0.00
2,800.0	15.35	187.46	2,760.1	-338.9	-44.4	-337.7	0.00	0.00	0.00
2,900.0	15.35	187.46	2,856.5	-365.2	-47.8	-363.8	0.00	0.00	0.00
3,000.0	15.35	187.46	2,953.0	-391.4	-51.3	-390.0	0.00	0.00	0.00
3,100.0	15.35	187.46	3,049.4	-417.7	-54.7	-416.1	0.00	0.00	0.00
3,200.0	15.35	187.46	3,145.8	-443.9	-58.1	-442.3	0.00	0.00	0.00
3,300.0	15.35	187.46	3,242.3	-470.1	-61.6	-468.4	0.00	0.00	0.00
3,400.0	15.35	187.46	3,338.7	-496.4	-65.0	-494.6	0.00	0.00	0.00
3,500.0	15.35	187.46	3,435.1	-522.6	-68.4	-520.7	0.00	0.00	0.00
3,600.0	15.35	187.46	3,531.6	-548.9	-71.9	-546.9	0.00	0.00	0.00
3,700.0	15.35	187.46	3,628.0	-575.1	-75.3	-573.0	0.00	0.00	0.00
3,800.0	15.35	187.46	3,724.4	-601.4	-78.7	-599.2	0.00	0.00	0.00
3,900.0	15.35	187.46	3,820.9	-627.6	-82.2	-625.3	0.00	0.00	0.00
4,000.0	15.35	187.46	3,917.3	-653.8	-85.6	-651.5	0.00	0.00	0.00
4,100.0	15.35	187.46	4,013.7	-680.1	-89.1	-677.6	0.00	0.00	0.00
4,200.0	15.35	187.46	4,110.2	-706.3	-92.5	-703.8	0.00	0.00	0.00
4,300.0	15.35	187.46	4,206.6	-732.6	-95.9	-729.9	0.00	0.00	0.00
4,400.0	15.35	187.46	4,303.0	-758.8	-99.4	-756.1	0.00	0.00	0.00
4,500.0	15.35	187.46	4,399.5	-785.1	-102.8	-782.2	0.00	0.00	0.00
4,600.0	15.35	187.46	4,495.9	-811.3	-106.2	-808.3	0.00	0.00	0.00
4,700.0	15.35	187.46	4,592.3	-837.5	-109.7	-834.5	0.00	0.00	0.00
4,800.0	15.35	187.46	4,688.8	-863.8	-113.1	-860.6	0.00	0.00	0.00
4,900.0	15.35	187.46	4,785.2	-890.0	-116.5	-886.8	0.00	0.00	0.00

<b>Database:</b>	EDMNEW	<b>Local Co-ordinate Reference:</b>	Well Albrighton E-10HC
<b>Company:</b>	Bayswater Exploration & Production, LLC	<b>TVD Reference:</b>	WELL @ 4829.5ft (RKB - 22.5')
<b>Project:</b>	SEC.10-T6N-R64W	<b>MD Reference:</b>	WELL @ 4829.5ft (RKB - 22.5')
<b>Site:</b>	Albrighton Pad Sec.10-T6N-R64W	<b>North Reference:</b>	True
<b>Well:</b>	Albrighton E-10HC	<b>Survey Calculation Method:</b>	Minimum Curvature
<b>Wellbore:</b>	Wellbore #1		
<b>Design:</b>	Plan #2 (8-17-15)		

Planned Survey									
Measured Depth (ft)	Inclination (°)	Azimuth (°)	Vertical Depth (ft)	+N/-S (ft)	+E/-W (ft)	Vertical Section (ft)	Dogleg Rate (°/100ft)	Build Rate (°/100ft)	Turn Rate (°/100ft)
5,000.0	15.35	187.46	4,881.7	-916.3	-120.0	-912.9	0.00	0.00	0.00
5,100.0	15.35	187.46	4,978.1	-942.5	-123.4	-939.1	0.00	0.00	0.00
5,200.0	15.35	187.46	5,074.5	-968.8	-126.8	-965.2	0.00	0.00	0.00
5,300.0	15.35	187.46	5,171.0	-995.0	-130.3	-991.4	0.00	0.00	0.00
5,400.0	15.35	187.46	5,267.4	-1,021.2	-133.7	-1,017.5	0.00	0.00	0.00
5,500.0	15.35	187.46	5,363.8	-1,047.5	-137.2	-1,043.7	0.00	0.00	0.00
5,580.8	15.35	187.46	5,441.7	-1,068.7	-139.9	-1,064.8	0.00	0.00	0.00
<b>Start Drop -2.00</b>									
5,600.0	14.96	187.46	5,460.3	-1,073.7	-140.6	-1,069.8	2.00	-2.00	0.00
5,700.0	12.96	187.46	5,557.3	-1,097.6	-143.7	-1,093.6	2.00	-2.00	0.00
5,800.0	10.96	187.46	5,655.1	-1,118.2	-146.4	-1,114.1	2.00	-2.00	0.00
5,900.0	8.96	187.46	5,753.6	-1,135.3	-148.7	-1,131.2	2.00	-2.00	0.00
6,000.0	6.96	187.46	5,852.7	-1,149.0	-150.5	-1,144.9	2.00	-2.00	0.00
6,100.0	4.96	187.46	5,952.1	-1,159.3	-151.8	-1,155.1	2.00	-2.00	0.00
6,200.0	2.96	187.46	6,051.9	-1,166.2	-152.7	-1,162.0	2.00	-2.00	0.00
6,300.0	0.96	187.46	6,151.8	-1,169.6	-153.1	-1,165.3	2.00	-2.00	0.00
6,348.2	0.00	187.46	6,200.0	-1,170.0	-153.2	-1,165.7	2.00	-2.00	0.00
<b>Start 251.6 hold at 6348.2 MD</b>									
6,400.0	0.00	0.00	6,251.8	-1,170.0	-153.2	-1,165.7	0.00	0.00	0.00
6,500.0	0.00	0.00	6,351.8	-1,170.0	-153.2	-1,165.7	0.00	0.00	0.00
6,599.8	0.00	0.00	6,451.6	-1,170.0	-153.2	-1,165.7	0.00	0.00	0.00
<b>Start Build 10.00</b>									
6,600.0	0.00	0.72	6,451.8	-1,170.0	-153.2	-1,165.7	0.00	0.00	0.00
6,700.0	10.02	0.72	6,551.3	-1,161.3	-153.1	-1,157.0	10.02	10.02	0.00
6,800.0	20.02	0.72	6,647.7	-1,135.4	-152.8	-1,131.1	10.00	10.00	0.00
6,900.0	30.02	0.72	6,738.2	-1,093.1	-152.2	-1,088.9	10.00	10.00	0.00
7,000.0	40.02	0.72	6,820.0	-1,035.8	-151.5	-1,031.6	10.00	10.00	0.00
7,100.0	50.03	0.72	6,890.6	-965.2	-150.6	-961.0	10.00	10.00	0.00
7,200.0	60.03	0.72	6,947.9	-883.3	-149.6	-879.3	10.00	10.00	0.00
7,300.0	70.03	0.72	6,990.0	-792.8	-148.5	-788.8	10.00	10.00	0.00
7,400.0	80.03	0.72	7,015.8	-696.3	-147.3	-692.4	10.00	10.00	0.00
7,499.7	90.00	0.72	7,024.5	-597.1	-146.0	-593.2	10.00	10.00	0.00
7,499.8	90.00	0.72	7,024.5	-597.0	-146.0	-593.1	0.00	0.00	0.00
<b>7" - LPL 573'FSL, 1015'FWL</b>									
7,500.0	90.00	0.72	7,024.5	-596.8	-146.0	-592.9	0.00	0.00	0.00
7,500.1	90.00	0.72	7,024.5	-596.7	-146.0	-592.8	2.60	0.00	-2.60
<b>Start 4256.7 hold at 7500.1 MD</b>									
7,600.0	90.00	0.72	7,024.5	-496.8	-144.8	-493.0	0.00	0.00	0.00
7,700.0	90.00	0.72	7,024.5	-396.9	-143.5	-393.1	0.00	0.00	0.00
7,800.0	90.00	0.72	7,024.5	-296.9	-142.3	-293.2	0.00	0.00	0.00
7,900.0	90.00	0.72	7,024.5	-196.9	-141.0	-193.2	0.00	0.00	0.00
8,000.0	90.00	0.72	7,024.5	-96.9	-139.8	-93.3	0.00	0.00	0.00
8,100.0	90.00	0.72	7,024.5	3.1	-138.5	6.6	0.00	0.00	0.00
8,200.0	90.00	0.72	7,024.5	103.1	-137.3	106.6	0.00	0.00	0.00
8,300.0	90.00	0.72	7,024.5	203.1	-136.0	206.5	0.00	0.00	0.00
8,400.0	90.00	0.72	7,024.5	303.1	-134.8	306.4	0.00	0.00	0.00
8,500.0	90.00	0.72	7,024.5	403.1	-133.5	406.3	0.00	0.00	0.00
8,600.0	90.00	0.72	7,024.5	503.1	-132.3	506.3	0.00	0.00	0.00
8,700.0	90.00	0.72	7,024.5	603.1	-131.0	606.2	0.00	0.00	0.00
8,800.0	90.00	0.72	7,024.5	703.1	-129.8	706.1	0.00	0.00	0.00
8,900.0	90.00	0.72	7,024.5	803.1	-128.5	806.1	0.00	0.00	0.00
9,000.0	90.00	0.72	7,024.5	903.0	-127.3	906.0	0.00	0.00	0.00
9,100.0	90.00	0.72	7,024.5	1,003.0	-126.0	1,005.9	0.00	0.00	0.00

<b>Database:</b>	EDMNEW	<b>Local Co-ordinate Reference:</b>	Well Albrighton E-10HC
<b>Company:</b>	Bayswater Exploration & Production, LLC	<b>TVD Reference:</b>	WELL @ 4829.5ft (RKB - 22.5')
<b>Project:</b>	SEC.10-T6N-R64W	<b>MD Reference:</b>	WELL @ 4829.5ft (RKB - 22.5')
<b>Site:</b>	Albrighton Pad Sec.10-T6N-R64W	<b>North Reference:</b>	True
<b>Well:</b>	Albrighton E-10HC	<b>Survey Calculation Method:</b>	Minimum Curvature
<b>Wellbore:</b>	Wellbore #1		
<b>Design:</b>	Plan #2 (8-17-15)		

Planned Survey									
Measured Depth (ft)	Inclination (°)	Azimuth (°)	Vertical Depth (ft)	+N/-S (ft)	+E/-W (ft)	Vertical Section (ft)	Dogleg Rate (°/100ft)	Build Rate (°/100ft)	Turn Rate (°/100ft)
9,200.0	90.00	0.72	7,024.5	1,103.0	-124.8	1,105.8	0.00	0.00	0.00
9,300.0	90.00	0.72	7,024.5	1,203.0	-123.5	1,205.8	0.00	0.00	0.00
9,400.0	90.00	0.72	7,024.5	1,303.0	-122.3	1,305.7	0.00	0.00	0.00
9,500.0	90.00	0.72	7,024.5	1,403.0	-121.1	1,405.6	0.00	0.00	0.00
9,600.0	90.00	0.72	7,024.5	1,503.0	-119.8	1,505.6	0.00	0.00	0.00
9,700.0	90.00	0.72	7,024.5	1,603.0	-118.6	1,605.5	0.00	0.00	0.00
9,800.0	90.00	0.72	7,024.5	1,703.0	-117.3	1,705.4	0.00	0.00	0.00
9,900.0	90.00	0.72	7,024.5	1,803.0	-116.1	1,805.3	0.00	0.00	0.00
10,000.0	90.00	0.72	7,024.5	1,903.0	-114.8	1,905.3	0.00	0.00	0.00
10,100.0	90.00	0.72	7,024.5	2,003.0	-113.6	2,005.2	0.00	0.00	0.00
10,200.0	90.00	0.72	7,024.5	2,102.9	-112.3	2,105.1	0.00	0.00	0.00
10,300.0	90.00	0.72	7,024.5	2,202.9	-111.1	2,205.1	0.00	0.00	0.00
10,400.0	90.00	0.72	7,024.5	2,302.9	-109.8	2,305.0	0.00	0.00	0.00
10,500.0	90.00	0.72	7,024.5	2,402.9	-108.6	2,404.9	0.00	0.00	0.00
10,600.0	90.00	0.72	7,024.5	2,502.9	-107.3	2,504.8	0.00	0.00	0.00
10,700.0	90.00	0.72	7,024.5	2,602.9	-106.1	2,604.8	0.00	0.00	0.00
10,800.0	90.00	0.72	7,024.5	2,702.9	-104.8	2,704.7	0.00	0.00	0.00
10,900.0	90.00	0.72	7,024.5	2,802.9	-103.6	2,804.6	0.00	0.00	0.00
11,000.0	90.00	0.72	7,024.5	2,902.9	-102.3	2,904.5	0.00	0.00	0.00
11,100.0	90.00	0.72	7,024.5	3,002.9	-101.1	3,004.5	0.00	0.00	0.00
11,200.0	90.00	0.72	7,024.5	3,102.9	-99.8	3,104.4	0.00	0.00	0.00
11,300.0	90.00	0.72	7,024.5	3,202.9	-98.6	3,204.3	0.00	0.00	0.00
11,400.0	90.00	0.72	7,024.5	3,302.9	-97.3	3,304.3	0.00	0.00	0.00
11,500.0	90.00	0.72	7,024.5	3,402.8	-96.1	3,404.2	0.00	0.00	0.00
11,600.0	90.00	0.72	7,024.5	3,502.8	-94.8	3,504.1	0.00	0.00	0.00
11,700.0	90.00	0.72	7,024.5	3,602.8	-93.6	3,604.0	0.00	0.00	0.00
11,756.8	90.00	0.72	7,024.5	3,659.6	-92.9	3,660.8	0.00	0.00	0.00
BHL 470°FNL, 1015°FNL									

Targets									
Target Name	Dip Angle (°)	Dip Dir. (°)	TVD (ft)	+N/-S (ft)	+E/-W (ft)	Northing (ft)	Easting (ft)	Latitude	Longitude
LPL 573°FSL, 1015°Fv - plan hits target center - Point	0.00	0.00	7,024.5	-597.0	-146.0	1,424,598.14	3,266,403.91	40.494973	-104.542108
SHL 1170°FSL, 1152°F - plan hits target center - Point	0.00	0.00	1.0	0.0	0.0	1,425,196.67	3,266,543.47	40.496612	-104.541583
BHL 470°FNL, 1015°Fv - plan hits target center - Point	0.00	0.00	7,024.5	3,659.6	-92.9	1,428,854.91	3,266,411.04	40.506657	-104.541917

Casing Points				
Measured Depth (ft)	Vertical Depth (ft)	Name	Casing Diameter (")	Hole Diameter (")
7,499.8	7,024.5	7"	7	7-1/2

<b>Database:</b>	EDMNEW	<b>Local Co-ordinate Reference:</b>	Well Albrighton E-10HC
<b>Company:</b>	Bayswater Exploration & Production, LLC	<b>TVD Reference:</b>	WELL @ 4829.5ft (RKB - 22.5')
<b>Project:</b>	SEC.10-T6N-R64W	<b>MD Reference:</b>	WELL @ 4829.5ft (RKB - 22.5')
<b>Site:</b>	Albrighton Pad Sec.10-T6N-R64W	<b>North Reference:</b>	True
<b>Well:</b>	Albrighton E-10HC	<b>Survey Calculation Method:</b>	Minimum Curvature
<b>Wellbore:</b>	Wellbore #1		
<b>Design:</b>	Plan #2 (8-17-15)		

Plan Annotations				
Measured Depth (ft)	Vertical Depth (ft)	Local Coordinates		Comment
		+N/-S (ft)	+E/-W (ft)	
1,000.0	1,000.0	0.0	0.0	KOP - Start Build 1.50
5,580.8	5,441.8	-135.1	-17.7	Start Drop -2.00
6,348.2	6,200.0	-1,068.7	-139.9	Start 251.6 hold at 6348.2 MD
6,599.8	6,451.6	-1,170.0	-153.2	Start Build 10.00
7,500.1	7,024.5	-1,170.0	-153.2	Start 4256.7 hold at 7500.1 MD
11,756.8	7,024.5	-596.7	-146.0	TD at 11756.8