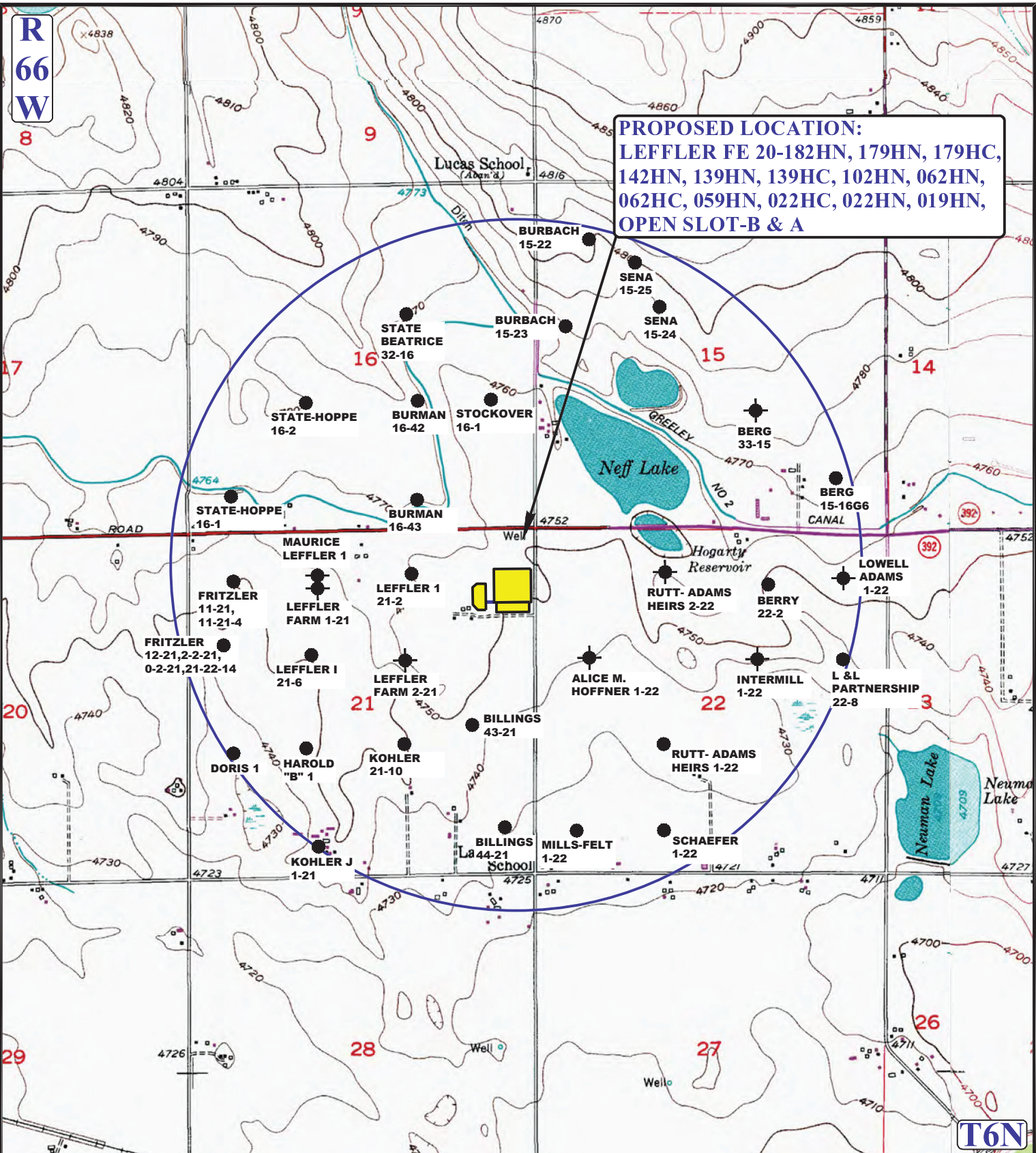


R  
66  
W

**PROPOSED LOCATION:**  
LEFFLER FE 20-182HN, 179HN, 179HC,  
142HN, 139HN, 139HC, 102HN, 062HN,  
062HC, 059HN, 022HC, 022HN, 019HN,  
OPEN SLOT-B & A



**LEGEND:**

- DISPOSAL WELLS
- PRODUCING WELLS
- SHUT IN WELLS
- ABANDONED WELLS
- TEMPORARILY ABANDONED

**GREAT WESTERN OIL & GAS COMPANY**

LEFFLER FE 20-182HN, 179HN, 179HC, 142HN, 139HN,  
139HC, 102HN, 062HN, 062HC, 059HN, 022HC, 022HN,  
019HN, OPEN SLOT-B & A  
NE 1/4 NE 1/4, SECTION 21, T6N, R66W, 6th P.M.  
WELD COUNTY, COLORADO



**UELS, LLC**  
Corporate Office \* 85 South 200 East  
Vernal, UT 84078 \* (435) 789-1017

DRAWN BY: J.L.G.	DATE DRAWN: 04-28-15
SCALE: 1" = 2000'	REV: 05-28-15

**WELL PROXIMITY MAP** | **TOPO C**