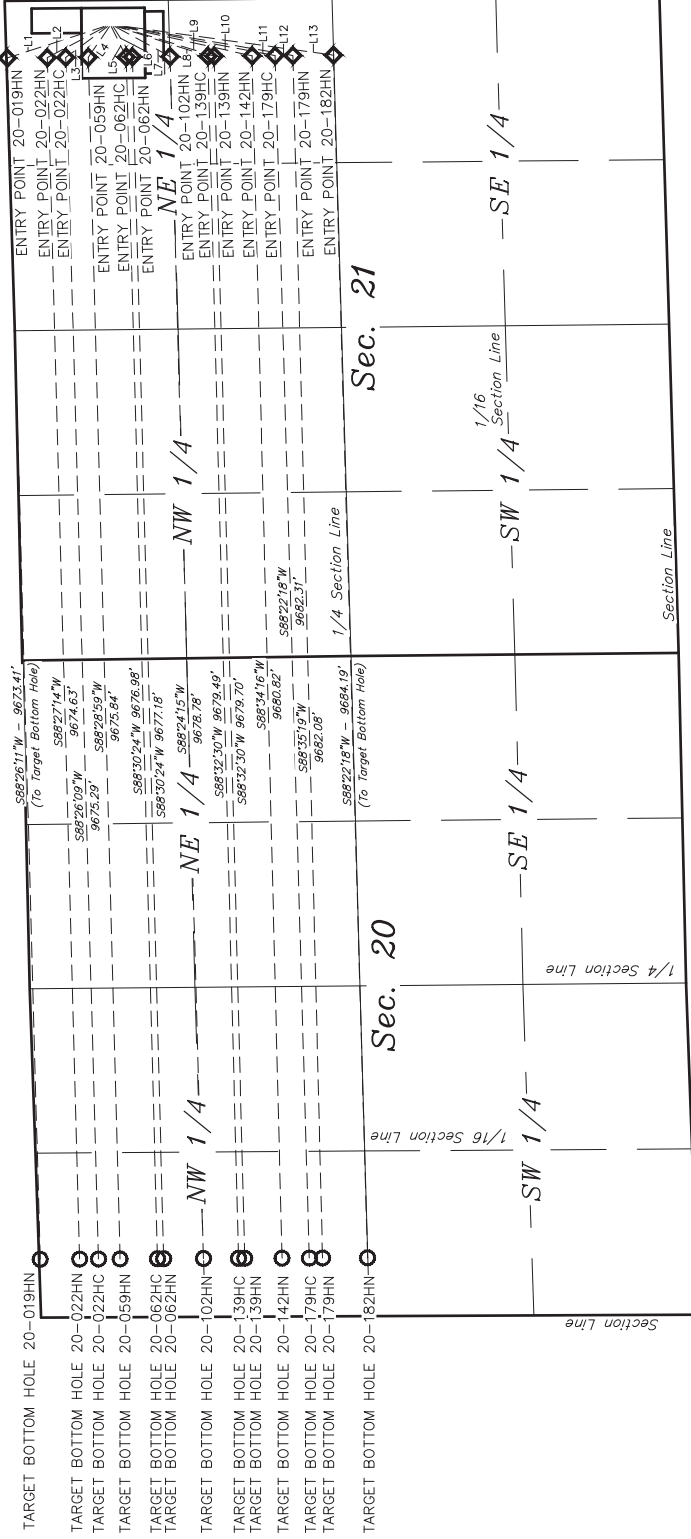




- ◇ Entry Point
- Target
- Bottom Hole



LINE	DIRECTION	LENGTH
L1	N17°57'30\"W	815.84'
L2	N27°53'07\"W	532.47'
L3	N36°19'48\"W	418.52'
L4	N55°18'38\"W	299.79'
L5	S63°55'51\"W	271.71'
L6	S57°37'07\"W	288.47'
L7	S28°35'21\"W	503.96'
L8	S18°03'08\"W	770.52'
L9	S17°15'06\"W	803.80'
L10	S12°34'37\"W	1083.76'
L11	S10°48'24\"W	1250.56'
L12	S09°45'42\"W	1376.72'
L13	S07°52'41\"W	1683.30'



NOTES

GREAT WESTERN OIL & GAS COMPANY
LEFFLER FE 20-182HN, 179HN, 179HC, 142HN, 139HN, 139HC, 102HN, 062HN, 062HC, 059HN, 022HC, 022HN, 019HN, OPEN SLOTT-B & A
NE 1/4 NE 1/4 SECTION 21, T6N, R66W, 6th P.M.
WELD COUNTY, COLORADO

DRAWN BY: K.B.	DATE DRAWN: 04-23-15
SCALE: 1\"= 1000'	REVISED: 00-00-00
MULTI-Well PLAN	FIGURE #5

UELS, LLC
Corporate Office * 85 South 200 East
Vernal, UT 84078 * (435) 789-1017

