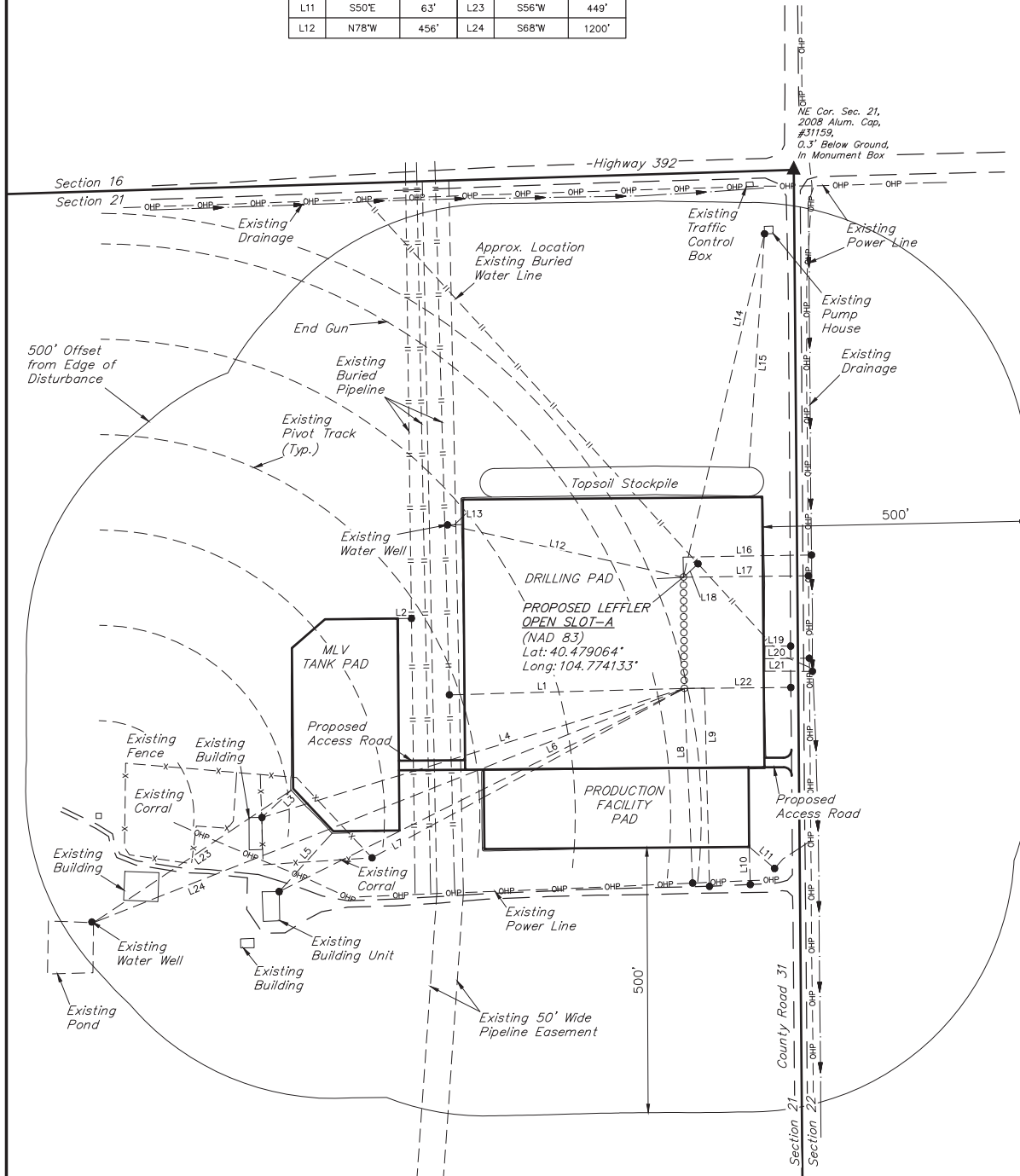


LINE TABLE			LINE TABLE		
LINE	DIRECTION	LENGTH	LINE	DIRECTION	LENGTH
L1	S88°W	444'	L13	S89°W	27'
L2	N89°E	24'	L14	N13°E	666'
L3	S47°W	75'	L15	N04°E	442'
L4	S73°W	834'	L16	N89°E	242'
L5	S42°W	149'	L17	N89°E	236'
L6	S63°W	855'	L18	N48°E	38'
L7	S62°W	670'	L19	EAST	49'
L8	S02°E	368'	L20	N89°E	84'
L9	S01°E	374'	L21	EAST	90'
L10	S02°E	71'	L22	N89°E	201'
L11	S50°E	63'	L23	S56°W	449'
L12	N78°W	456'	L24	S68°W	1200'



GREAT WESTERN OIL & GAS COMPANY

LEFFLER FE 20-182HN, 179HN, 179HC, 142HN, 139HN, 139HC, 102HN, 062HN, 062HC, 059HN, 022HC, 022HN, 019HN, OPEN SLOT-B & A
NE 1/4 NE 1/4, SECTION 21, T6N, R66W, 6th P.M.
WELD COUNTY, COLORADO



UELS, LLC
Corporate Office * 85 South 200 East
Vernal, UT 84078 * (435) 789-1017

SURVEYED BY: DALLAS NIELSEN, B.C.	SURVEY DATE: 04-21-15
DRAWN BY: K.B.	DATE DRAWN: 04-23-15
SCALE: 1" = 200'	REVISED: 05-26-15

LOCATION DRAWING

FIGURE #4