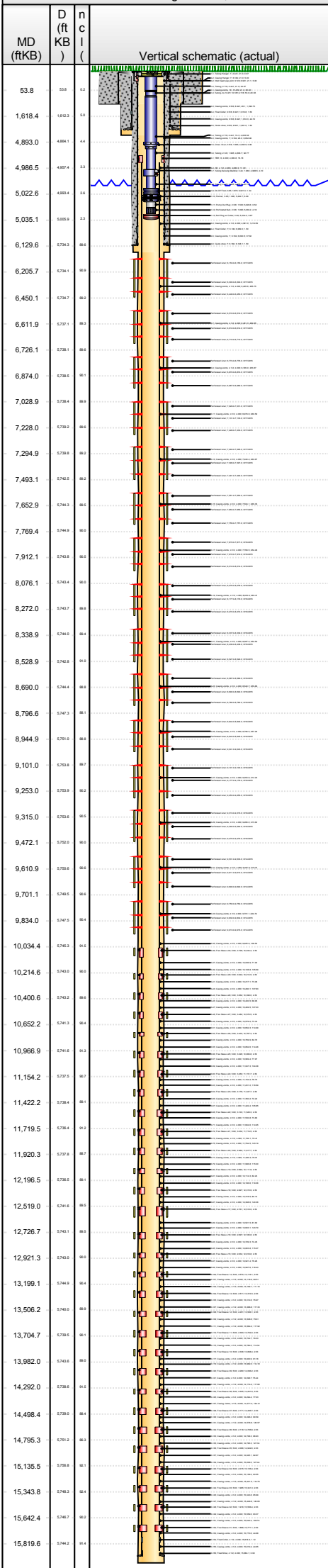




Lease Review  
Well Name: HORSETAIL 08D-1703

API Number 051234102100		WPC ID 1CO0761187			Well Permit Number			Field Name Wildcat			County Weld		State CO		
Well Configuration Type Lateral/Horizontal				Orig KB Elv (ft) 4,983.20		Ground Elevation (ft) 4,962.20		Casing Flange Elevation (ft)		Tubing Head Elevation (ft)		Total Depth (ftKB) 15,875.0			
Original Spud Date 4/30/2015		Completion Date 6/17/2015		Asset Group Redtail			Responsible Engineer Charles Ohlson			N/S Dist (ft) 380.0		N/S Ref FNL	E/W Dist (ft) 560.0		E/W Ref FWL
Lot	Quarter 1 NW	Quarter 2 NW	Quarter 3	Quarter 4	Section 8	Section Suffix	Section Type	Township 10	Township N/S Dir N	Range 57	Range E/W Dir W	Meridian			

Lateral/Horizontal - Original Hole, 9/11/2015 10:32:51 AM



Wellbore Sections

Wellbore Name	Start Date	Size (in)	Act Top (ftKB)	Act Btm (ftKB)
Original Hole	3/21/2015	24	21.0	101.0
Original Hole	4/30/2015	13 1/2	101.0	1,675.0
Original Hole	5/2/2015	8 3/4	1,675.0	6,145.0
Original Hole	5/5/2015	6 1/8	6,145.0	15,875.0

Conductor Pipe, 101.0ftKB

OD (in)	Wt (lb/ft)	Grade	Top (ftKB)	Btm (ftKB)	Len (ft)	Item Des
16	65.00	H-40	21.0	101.0	80.00	Casing Joints

Surface Csg, 1,662.5ftKB

OD (in)	Wt (lb/ft)	Grade	Top (ftKB)	Btm (ftKB)	Len (ft)	Item Des
9 5/8	36.00	J-55	21.0	21.0	0.00	Landing Joint
9 5/8	36.00	J-55	21.0	26.0	5.00	Well head/ pup joint
9 5/8	36.00	J-55	26.0	1,616.8	1,590.73	Casing Joints
9 5/8	36.00	J-55	1,616.8	1,618.3	1.50	Float Collar
9 5/8	36.00	J-55	1,618.3	1,661.0	42.72	Casing Joints
9 5/8	36.00	J-55	1,661.0	1,662.5	1.50	Guide shoe

Frac String, 5,004.1ftKB

OD (in)	Wt (lb/ft)	Grade	Top (ftKB)	Btm (ftKB)	Len (ft)	Item Des
7 1/16			21.0	21.8	0.80	Casing Hanger
4 1/2	11.60	P-110	21.8	65.8	43.97	Casing Joints
4 1/2	11.60	P-110	65.8	82.2	16.45	Casing Sub 8.23ft 8.22ft
4 1/2	11.60	P-110	82.2	4,985.0	4,902.78	Casing Joints
5.31			4,985.0	4,985.7	0.65	Cross Over
5.31			4,985.7	4,987.7	2.07	NO-GO
4.55			4,987.7	5,000.6	12.85	Extension
5.21			5,000.6	5,004.1	3.54	Seal Assembly

Intermediate Csg, 6,129.6ftKB

OD (in)	Wt (lb/ft)	Grade	Top (ftKB)	Btm (ftKB)	Len (ft)	Item Des
7	29.00	L-80	21.0	21.0	0.00	Landing Joint
7	29.00	L-80	21.0	26.0	5.00	Casing Hanger
7	29.00	L-80	26.0	6,089.0	6,062.98	Casing Joints
7	29.00	L-80	6,089.0	6,090.5	1.50	Float Collar
7	29.00	L-80	6,090.5	6,128.1	37.62	Casing Joints
7	29.00	L-80	6,128.1	6,129.6	1.50	Guide shoe

Liner, 15,865.0ftKB

OD (in)	Wt (lb/ft)	Grade	Top (ftKB)	Btm (ftKB)	Len (ft)	Item Des
6	11.60	P-110	4,963.8	4,980.0	16.18	TBR
4 1/2	11.60	P-110	4,980.0	4,991.0	11.00	XO
4 1/2	11.60	P-110	4,991.0	6,205.6	1,214.59	Casing Joints
4 1/2	11.60	P-110	6,205.6	6,205.6	0.00	Swell Packer #45
4 1/2	11.60	P-110	6,205.6	6,461.3	255.75	Casing Joints
5.85	11.60	P-110	6,461.3	6,461.3	0.00	Swell Packer #44
4 1/2	11.60	P-110	6,461.3	6,726.0	264.65	Casing Joints
5.85	11.60	P-110	6,726.0	6,726.0	0.00	Swell Packer #43
4 1/2	11.60	P-110	6,726.0	6,979.9	253.87	Casing Joints
5.85	11.60	P-110	6,979.9	6,979.9	0.00	Swell Packer #42
4 1/2	11.60	P-110	6,979.9	7,240.4	260.59	Casing Joints
5.85	11.60	P-110	7,240.4	7,240.4	0.00	Swell Packer #41
4 1/2	11.60	P-110	7,240.4	7,504.1	263.67	Casing Joints
5.85	11.60	P-110	7,504.1	7,504.1	0.00	Swell Packer #40
4 1/2	11.60	P-110	7,504.1	7,769.5	265.35	Casing Joints
5.85	11.60	P-110	7,769.5	7,769.5	0.00	Swell Packer #39
4 1/2	11.60	P-110	7,769.5	8,023.9	254.48	Casing Joints
5.85	11.60	P-110	8,023.9	8,023.9	0.00	Swell Packer #38
4 1/2	11.60	P-110	8,023.9	8,287.2	263.21	Casing Joints
5.85	11.60	P-110	8,287.2	8,287.2	0.00	Swell Packer #37
4 1/2	11.60	P-110	8,287.2	8,540.7	253.50	Casing Joints
5.85	11.60	P-110	8,540.7	8,540.7	0.00	Swell Packer #36
4 1/2	11.60	P-110	8,540.7	8,796.5	255.86	Casing Joints
5.85	11.60	P-110	8,796.5	8,796.5	0.00	Swell Packer #35
4 1/2	11.60	P-110	8,796.5	9,053.8	257.26	Casing Joints
5.85	11.60	P-110	9,053.8	9,053.8	0.00	Swell Packer #34
4 1/2	11.60	P-110	9,053.8	9,266.0	212.23	Casing Joints
5.85	11.60	P-110	9,266.0	9,266.0	0.00	Swell Packer #33
4 1/2	11.60	P-110	9,266.0	9,481.6	215.62	Casing Joints
5.85	11.60	P-110	9,481.6	9,481.6	0.00	Swell Packer #32
4 1/2	11.60	P-110	9,481.6	9,701.1	219.51	Casing Joints
5.85	11.60	P-110	9,701.1	9,701.1	0.00	Swell Packer #31
4 1/2	11.60	P-110	9,701.1	9,925.9	224.74	Casing Joints
5.85	11.60	P-110	9,925.9	9,925.9	0.00	Swell Packer #30
4 1/2	11.60	P-110	9,925.9	10,034.4	108.52	Casing Joints
5.6	11.60	P-110	10,034.4	10,036.9	2.53	Frac Sleeve 30
4 1/2	11.60	P-110	10,036.9	10,108.8	71.92	Casing Joints



Lease Review

Well Name: HORSETAIL 08D-1703

WPI Number 051234102100				WPC ID 1CO0761187				Well Permit Number				Field Name Wildcat				County Weld		State CO							
Well Configuration Type Lateral/Horizontal				Orig KB Elv (ft) 4,983.20				Ground Elevation (ft) 4,962.20				Casing Flange Elevation (ft)				Tubing Head Elevation (ft)				Total Depth (ftKB) 15,875.0					
Original Spud Date 4/30/2015				Completion Date 6/17/2015				Asset Group Redtail				Responsible Engineer Charles Ohlson				N/S Dist (ft) 380.0		N/S Ref FNL		E/W Dist (ft) 560.0		E/W Ref FWL			
Lot		Quarter 1 NW		Quarter 2 NW		Quarter 3		Quarter 4		Section 8		Section Suffix		Section Type		Township 10 N		Township N/S Dir		Range 57		Range E/W Dir W		Meridian	
Lateral/Horizontal - Original Hole, 9/11/2015 10:32:51 AM										OD (in)		Wt (lb/ft)		Grade		Top (ftKB)		Btm (ftKB)		Len (ft)		Item Des			
MD (ftKB)	D (ft KB )	n ( )	c ( )	l ( )	Vertical schematic (actual)	Logs	5.85		11.60		P-110		10,108.8		10,108.8		0.00		Swell Packer #29						
							4 1/2		11.60		P-110		10,108.8		10,214.5		105.69		Casing Joints						
53.8	0.0	0.0					5.6		11.60		P-110		10,214.5		10,217.1		2.53		Frac Sleeve 29						
							4 1/2		11.60		P-110		10,217.1		10,290.1		73.08		Casing Joints						
1,618.4	1,612.2	5.0					5.85		11.60		P-110		10,290.1		10,290.1		0.00		Swell Packer #28						
							4 1/2		11.60		P-110		10,290.1		10,398.0		107.83		Casing Joints						
4,893.0	4,884.1	4.4					5.6		11.60		P-110		10,398.0		10,400.5		2.53		Frac Sleeve 28						
							4 1/2		11.60		P-110		10,400.5		10,469.5		68.95		Casing Joints						
4,986.5	4,987.4	3.3					5.85		11.60		P-110		10,469.5		10,469.5		0.00		Swell Packer #27						
							4 1/2		11.60		P-110		10,469.5		10,576.5		107.03		Casing Joints						
5,022.6	4,989.4	2.0					5.6		11.60		P-110		10,576.5		10,579.0		2.53		Frac Sleeve 27						
							4 1/2		11.60		P-110		10,579.0		10,652.3		73.33		Casing Joints						
6,129.6	5,794.3	0.8					5.85		11.60		P-110		10,652.3		10,652.3		0.00		Swell Packer #26						
							4 1/2		11.60		P-110		10,652.3		10,767.3		114.99		Casing Joints						
6,205.7	5,794.1	0.8					5.6		11.60		P-110		10,767.3		10,769.9		2.53		Frac Sleeve 26						
							4 1/2		11.60		P-110		10,769.9		10,852.6		82.70		Casing Joints						
6,450.1	5,794.7	0.8					5.85		11.60		P-110		10,852.6		10,852.6		0.00		Swell Packer #25						
							4 1/2		11.60		P-110		10,852.6		10,966.8		114.26		Casing Joints						
6,611.9	5,797.1	0.8					5.6		11.60		P-110		10,966.8		10,969.4		2.53		Frac Sleeve 25						
							4 1/2		11.60		P-110		10,969.4		11,047.3		77.97		Casing Joints						
6,726.1	5,798.1	0.8					5.85		11.60		P-110		11,047.3		11,047.3		0.00		Swell Packer #24						
							4 1/2		11.60		P-110		11,047.3		11,151.7		104.38		Casing Joints						
6,874.0	5,795.0	0.8					5.6		11.60		P-110		11,151.7		11,154.2		2.53		Frac Sleeve 24						
							4 1/2		11.60		P-110		11,154.2		11,231.0		76.73		Casing Joints						
7,028.9	5,798.4	0.8					5.85		11.60		P-110		11,231.0		11,231.0		0.00		Swell Packer #23						
							4 1/2		11.60		P-110		11,231.0		11,347.7		116.69		Casing Joints						
7,228.0	5,799.2	0.8					5.6		11.60		P-110		11,347.7		11,350.2		2.53		Frac Sleeve 23						
							4 1/2		11.60		P-110		11,350.2		11,422.4		72.22		Casing Joints						
7,294.9	5,798.0	0.8					5.85		11.60		P-110		11,422.4		11,422.4		0.00		Swell Packer #22						
							4 1/2		11.60		P-110		11,422.4		11,528.3		105.85		Casing Joints						
7,493.1	5,742.0	0.8					5.6		11.60		P-110		11,528.3		11,530.8		2.53		Frac Sleeve 22						
							4 1/2		11.60		P-110		11,530.8		11,604.6		73.80		Casing Joints						
7,652.9	5,744.0	0.8					5.85		11.60		P-110		11,604.6		11,604.6		0.00		Swell Packer #21						
							4 1/2		11.60		P-110		11,604.6		11,719.5		114.95		Casing Joints						
7,769.4	5,749.0	0.8					5.6		11.60		P-110		11,719.5		11,722.1		2.53		Frac Sleeve 21						
							4 1/2		11.60		P-110		11,722.1		11,794.5		72.41		Casing Joints						
7,912.1	5,740.8	0.8					5.85		11.60		P-110		11,794.5		11,794.5		0.00		Swell Packer #20						
							4 1/2		11.60		P-110		11,794.5		11,917.7		123.19		Casing Joints						
8,076.1	5,740.4	0.8					5.6		11.60		P-110		11,917.7		11,920.2		2.53		Frac Sleeve 20						
							4 1/2		11.60		P-110		11,920.2		11,996.8		76.61		Casing Joints						
8,272.0	5,740.7	0.8					5.85		11.60		P-110		11,996.8		11,996.8		0.00		Swell Packer #19						
							4 1/2		11.60		P-110		11,996.8		12,111.8		115.00		Casing Joints						
8,338.9	5,746.0	0.8					5.6		11.60		P-110		12,111.8		12,114.3		2.53		Frac Sleeve 19						
							4 1/2		11.60		P-110		12,114.3		12,196.6		82.23		Casing Joints						
8,528.9	5,742.8	0.8					4 1/2		11.60		P-110		12,196.6		12,196.6		0.00		Swell Packer #18						
							4 1/2		11.60		P-110		12,196.6		12,315.9		119.36		Casing Joints						
8,690.0	5,744.4	0.8					5.6		11.60		P-110		12,315.9		12,318.5		2.53		Frac Sleeve 18						
							4 1/2		11.60		P-110		12,318.5		12,398.6		80.13		Casing Joints						
8,796.6	5,747.0	0.8					5.85		11.60		P-110		12,398.6		12,398.6		0.00		Swell Packer #17						
							4 1/2		11.60		P-110		12,398.6		12,518.9		120.36		Casing Joints						
8,944.9	5,751.0	0.8					5.6		11.60		P-110		12,518.9		12,521.5		2.53		Frac Sleeve 17						
							4 1/2		11.60		P-110		12,521.5		12,603.1		81.62		Casing Joints						
9,101.0	5,753.8	0.8					5.85		11.60		P-110		12,603.1		12,603.1		0.00		Swell Packer #16						
							4 1/2		11.60		P-110		12,603.1		12,726.8		123.70		Casing Joints						
9,253.0	5,750.9	0.8					5.6		11.60		P-110		12,726.8		12,729.3		2.53		Frac Sleeve 16						
							4 1/2		11.60		P-110		12,729.3		12,803.8		74.45		Casing Joints						
9,315.0	5,750.8	0.8					5.85		11.60		P-110		12,803.8		12,803.8		0.00		Swell Packer #15						
							4 1/2		11.60		P-110		12,803.8		12,918.8		115.07		Casing Joints						
9,472.1	5,750.0	0.8					5.6		11.60		P-110		12,918.8		12,921.4		2.53		Frac Sleeve 15						
							4 1/2		11.60		P-110		12,921.4		12,997.6		76.26		Casing Joints						
9,610.9	5,750.6	0.8					5.85		11.60		P-110		12,997.6		12,997.6		0.00		Swell Packer #14						
							4 1/2		11.60		P-110		12,997.6		13,116.1		118.43		Casing Joints						
9,701.1	5,746.0	0.8					5.6		11.60		P-110		13,116.1		13,118.6		2.53		Frac Sleeve 14						
							4 1/2		11.60		P-110		13,118.6		13,199.1		80.51		Casing Joints						
9,834.0	5,747.0	0.8					5.85		11.60		P-110		13,199.1		13,199.1		0.00		Swell Packer #13						
							4 1/2		11.60		P-110		13,199.1		13,310.3		111.16		Casing Joints						
10,034.4	5,746.0	0.8					5.6		11.60		P-110		13,310.3		13,312.8		2.53		Frac Sleeve 13						
							4 1/2		11.60		P-110		13,312.8		13,388.8		75.97		Casing Joints						
10,214.6	5,740.0	0.8					5.85		11.60		P-110		13,388.8		13,388.8		0.00		Swell Packer #12						
							4 1/2		11.60		P-110		13,388.8		13,506.1		117.33		Casing Joints						
10,400.6	5,740.2	0.8					5.6		11.60		P-110		13,506.1		13,508.6		2.53		Frac Sleeve 12						

Page 3/8





Lease Review  
Well Name: HORSETAIL 08D-1703

API Number 051234102100		WPC ID 1CO0761187		Well Permit Number		Field Name Wildcat		County Weld		State CO					
Well Configuration Type Lateral/Horizontal				Orig KB Elv (ft) 4,983.20		Ground Elevation (ft) 4,962.20		Casing Flange Elevation (ft)		Tubing Head Elevation (ft)		Total Depth (ftKB) 15,875.0			
Original Spud Date 4/30/2015		Completion Date 6/17/2015		Asset Group Redtail			Responsible Engineer Charles Ohlson			N/S Dist (ft) 380.0		N/S Ref FNL	E/W Dist (ft) 560.0		E/W Ref FWL
Lot	Quarter 1 NW	Quarter 2 NW	Quarter 3	Quarter 4	Section 8	Section Suffix	Section Type	Township 10	Township N/S Dir N	Range 57	Range E/W Dir W	Meridian			

Lateral/Horizontal - Original Hole, 9/11/2015 10:32:52 AM				Perforations						
MD (ftKB)	D (ft KB)	n c l (		Type of Hole	Date	Top (ftKB)	Btm (ftKB)	Zone		
53.8	0.0	0.0		Perforated Liner	6/17/2015	7,653.0	7,655.0	Niobrara, Original Hole		
1,618.4	1,612.2	0.0		Perforated Liner	6/17/2015	7,755.0	7,757.0	Niobrara, Original Hole		
4,893.0	4,884.1	4.4		Perforated Liner	6/16/2015	7,815.0	7,817.0	Niobrara, Original Hole		
4,986.5	4,987.4	3.3		Perforated Liner	6/16/2015	7,910.0	7,912.0	Niobrara, Original Hole		
5,022.6	4,989.4	2.6		Perforated Liner	6/16/2015	8,012.0	8,014.0	Niobrara, Original Hole		
5,035.1	5,005.9	2.3		Perforated Liner	6/16/2015	8,076.0	8,078.0	Niobrara, Original Hole		
6,129.6	5,794.0	0.0		Perforated Liner	6/16/2015	8,177.0	8,179.0	Niobrara, Original Hole		
6,205.7	5,794.1	96.9		Perforated Liner	6/16/2015	8,272.0	8,274.0	Niobrara, Original Hole		
6,450.1	5,794.7	0.0		Perforated Liner	6/16/2015	8,337.0	8,339.0	Niobrara, Original Hole		
6,611.9	5,797.1	0.0		Perforated Liner	6/16/2015	8,436.0	8,438.0	Niobrara, Original Hole		
6,726.1	5,798.1	96.6		Perforated Liner	6/16/2015	8,436.0	8,438.0	Niobrara, Original Hole		
6,874.0	5,798.0	0.0		Perforated Liner	6/16/2015	8,527.0	8,529.0	Niobrara, Original Hole		
7,028.9	5,798.4	0.0		Perforated Liner	6/16/2015	8,587.0	8,589.0	Niobrara, Original Hole		
7,228.0	5,799.2	0.0		Perforated Liner	6/16/2015	8,690.0	8,692.0	Niobrara, Original Hole		
7,294.9	5,799.0	0.0		Perforated Liner	6/16/2015	8,780.0	8,782.0	Niobrara, Original Hole		
7,493.1	5,742.0	0.0		Perforated Liner	6/16/2015	8,844.0	8,846.0	Niobrara, Original Hole		
7,652.9	5,744.0	0.0		Perforated Liner	6/16/2015	8,943.0	8,945.0	Niobrara, Original Hole		
7,769.4	5,743.0	96.0		Perforated Liner	6/16/2015	9,041.0	9,043.0	Niobrara, Original Hole		
7,912.1	5,740.0	0.0		Perforated Liner	6/16/2015	9,101.0	9,103.0	Niobrara, Original Hole		
8,076.1	5,740.4	0.0		Perforated Liner	6/16/2015	9,177.0	9,179.0	Niobrara, Original Hole		
8,272.0	5,740.7	0.0		Perforated Liner	6/16/2015	9,253.0	9,255.0	Niobrara, Original Hole		
8,338.9	5,744.0	0.0		Perforated Liner	6/16/2015	9,313.0	9,315.0	Niobrara, Original Hole		
8,528.9	5,742.0	0.0		Perforated Liner	6/16/2015	9,392.0	9,394.0	Niobrara, Original Hole		
8,690.0	5,744.0	0.0		Perforated Liner	6/16/2015	9,470.0	9,472.0	Niobrara, Original Hole		
8,796.6	5,747.0	96.1		Perforated Liner	6/16/2015	9,531.0	9,533.0	Niobrara, Original Hole		
8,944.9	5,751.0	0.0		Perforated Liner	6/16/2015	9,611.0	9,613.0	Niobrara, Original Hole		
9,101.0	5,753.0	0.0		Perforated Liner	6/16/2015	9,690.0	9,692.0	Niobrara, Original Hole		
9,253.0	5,753.0	96.0		Perforated Liner	6/16/2015	9,750.0	9,752.0	Niobrara, Original Hole		
9,315.0	5,750.0	96.0		Perforated Liner	6/14/2015	9,832.0	9,834.0	Niobrara, Original Hole		
9,472.1	5,750.0	0.0		Perforated Liner	6/14/2015	9,913.0	9,915.0	Niobrara, Original Hole		
9,610.9	5,750.0	0.0		Sand Frac on 6/11/2015 06:00						
9,701.1	5,746.0	0.0		Comment						
9,834.0	5,747.0	0.0		Treatment End Date: 6/17/2015; Number of staged intervals: 45;						
10,034.4	5,743.0	0.0		Number of Sleeves: 30; # of Perfs: 540 ; Min Frac Gradient:						
10,214.6	5,740.0	0.0		.728; Slickwater: 244117 bbl; Freshwater: 2468 bbl						
10,400.6	5,740.0	0.0		Stim/Treat Fluids						
10,652.2	5,741.0	0.0		Freshwater, Slick Water						
10,966.9	5,741.0	0.0		Proppant Frm (lb)	Total Clean Vol...	Avg Treat Rate...	Max Treat Rate...	Avg Treat Press...	P Max (psi)	Frac Gradient (p...
11,154.2	5,737.0	0.0		5,250,150.0	246587.00	71.50	92.60	6,426.0	8,085.0	0.73
11,422.2	5,738.4	0.0		<fluidname>, Slick Water						
11,719.5	5,738.4	0.0	Proppant Frm (lb)	Total Clean Vol...	Avg Treat Rate...	Max Treat Rate...	Avg Treat Press...	P Max (psi)	Frac Gradient (p...	
11,920.3	5,737.0	0.0	5,250,150.0	246587.00	71.50	92.60	6,426.0	8,085.0	0.73	
12,196.5	5,738.0	0.0	Stim/Treat Stages							
12,519.0	5,741.0	0.0	Stg #	Start Date	Top Depth (ftKB)	Bottom Depth (ftKB)	Vol Clean Pump (bbl)	Vol Slurry (bbl)		
12,726.7	5,741.0	0.0	1	6/11/2015	15,771.1	15,773.6	4992.00	5077.00		
12,921.3	5,740.0	0.0	Additive	Type	Amount	Units	Sand Size			
13,199.1	5,744.0	0.0	Proppant	PW 30/50	70,536.0	lb	30/50			
13,506.2	5,740.0	0.0	Additive	Type	Amount	Units	Sand Size			
13,704.7	5,739.0	0.0	Proppant	PW 40/70	2,271.0	lb	40/70			
13,982.0	5,740.0	0.0	Stg #	Start Date	Top Depth (ftKB)	Bottom Depth (ftKB)	Vol Clean Pump (bbl)	Vol Slurry (bbl)		
14,292.0	5,738.0	0.0	2	6/11/2015	15,556.5	15,559.0	5445.00	5570.00		
14,498.4	5,739.0	0.0	Additive	Type	Amount	Units	Sand Size			
14,795.3	5,730.0	0.0	Proppant	PW 30/50	111,218.0	lb	30/50			
15,135.5	5,739.0	0.0	Additive	Type	Amount	Units	Sand Size			
15,343.8	5,743.0	0.0	Proppant	PW 40/70	2,696.0	lb	40/70			
15,642.4	5,740.0	0.0	Stg #	Start Date	Top Depth (ftKB)	Bottom Depth (ftKB)	Vol Clean Pump (bbl)	Vol Slurry (bbl)		
15,819.6	5,742.0	0.0	3	6/11/2015	15,341.3	15,343.8	5137.00	5253.00		
			Additive	Type	Amount	Units	Sand Size			
			Proppant	PW 30/50	100,770.0	lb	30/50			
			Additive	Type	Amount	Units	Sand Size			
			Proppant	PW 40/70	2,840.0	lb	40/70			
			Stg #	Start Date	Top Depth (ftKB)	Bottom Depth (ftKB)	Vol Clean Pump (bbl)	Vol Slurry (bbl)		
			4	6/11/2015	15,135.5	15,138.0	7237.00	7380.00		
			Additive	Type	Amount	Units	Sand Size			
			Proppant	PW 30/50	116,932.0	lb	30/50			
			Additive	Type	Amount	Units	Sand Size			
			Proppant	PW 40/70	2,668.0	lb	40/70			
			Stg #	Start Date	Top Depth (ftKB)	Bottom Depth (ftKB)	Vol Clean Pump (bbl)	Vol Slurry (bbl)		
			5	6/11/2015	14,922.6	14,925.1	5627.00	5756.00		
			Additive	Type	Amount	Units	Sand Size			
			Proppant	PW 30/50	112,799.0	lb	30/50			
			Additive	Type	Amount	Units	Sand Size			
			Proppant	PW 40/70	2,663.0	lb	40/70			
			Stg #	Start Date	Top Depth (ftKB)	Bottom Depth (ftKB)	Vol Clean Pump (bbl)	Vol Slurry (bbl)		
			6	6/11/2015	14,705.8	14,708.3	5603.00	5742.00		
			Additive	Type	Amount	Units	Sand Size			
			Proppant	PW 30/50	126,487.0	lb	30/50			
			Additive	Type	Amount	Units	Sand Size			
			Proppant	PW 40/70	2,803.0	lb	40/70			
			Stg #	Start Date	Top Depth (ftKB)	Bottom Depth (ftKB)	Vol Clean Pump (bbl)	Vol Slurry (bbl)		
			7	6/11/2015	14,495.7	14,498.3	5651.00	5791.00		
			Additive	Type	Amount	Units	Sand Size			
			Proppant	PW 30/50	123,197.0	lb	30/50			

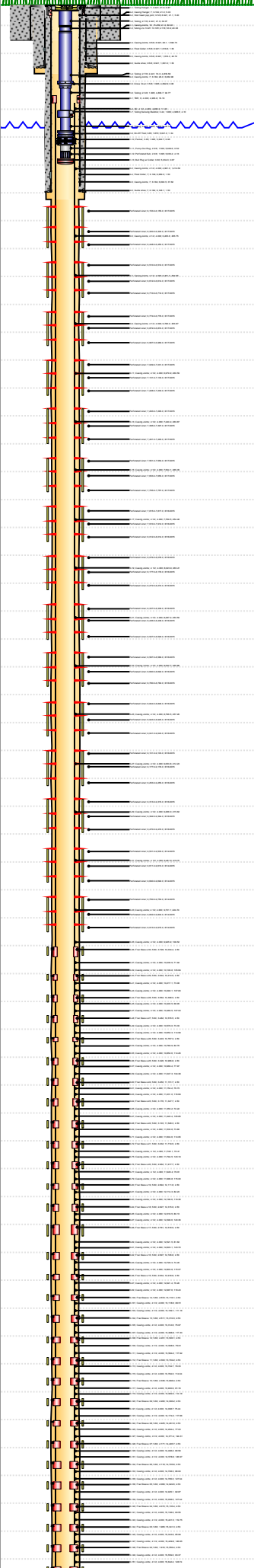


Lease Review  
Well Name: HORSETAIL 08D-1703

API Number 051234102100				WPC ID 1CO0761187				Well Permit Number				Field Name Wildcat				County Weld				State CO											
Well Configuration Type Lateral/Horizontal								Orig KB Elv (ft) 4,983.20				Ground Elevation (ft) 4,962.20				Casing Flange Elevation (ft)				Tubing Head Elevation (ft)				Total Depth (ftKB) 15,875.0							
Original Spud Date 4/30/2015				Completion Date 6/17/2015				Asset Group Redtail				Responsible Engineer Charles Ohlson				N/S Dist (ft) 380.0				N/S Ref FNL		E/W Dist (ft) 560.0				E/W Ref FWL					
Lot		Quarter 1 NW		Quarter 2 NW		Quarter 3		Quarter 4		Section 8		Section Suffix		Section Type		Township 10 N		Township N/S Dir		Range 57 W		Range E/W Dir		Meridian							
Lateral/Horizontal - Original Hole, 9/11/2015 10:32:53 AM												Additive Proppant				Type PW 40/70				Amount 2,721.0		Units lb		Sand Size 40/70							
MD (ftKB)		D (ft KB)		n (		c )						Vertical schematic (actual)				Logs				Stg #		Start Date		Top Depth (ftKB)		Bottom Depth (ftKB)		Vol Clean Pump (bbl)		Vol Slurry (bbl)	
53.8		0.0		0.0												8		6/11/2015		14,291.9		14,294.4		5750.00		5889.00					
1,618.4		1,612.2		0.0								Additive Proppant				Type PW 30/50				Amount 122,358.0		Units lb		Sand Size 30/50							
4,893.0		4,884.1		4.4								Additive Proppant				Type PW 40/70				Amount 2,824.0		Units lb		Sand Size 40/70							
4,986.5		4,987.4		3.3								Stg #		9		6/12/2015		14,096.2		14,098.8		6493.00		6632.00							
5,022.6		4,989.4		2.0								Additive Proppant				Type PW 30/50				Amount 118,648.0		Units lb		Sand Size 30/50							
5,035.1		5,005.9		2.3								Additive Proppant				Type PW 40/70				Amount 2,746.0		Units lb		Sand Size 40/70							
6,129.6		5,794.0		0.0								Stg #		10		6/12/2015		13,898.4		13,900.9		6141.00		6280.00							
6,205.7		5,794.1		0.0								Additive Proppant				Type PW 30/50				Amount 118,312.0		Units lb		Sand Size 30/50							
6,450.1		5,794.7		0.0								Additive Proppant				Type PW 40/70				Amount 2,544.0		Units lb		Sand Size 40/70							
6,611.9		5,795.1		0.0								Stg #		11		6/12/2015		13,702.2		13,704.7		5384.00		5524.00							
6,726.1		5,785.1		0.0								Additive Proppant				Type PW 30/50				Amount 116,908.0		Units lb		Sand Size 30/50							
6,874.0		5,785.0		0.0								Additive Proppant				Type PW 40/70				Amount 2,364.0		Units lb		Sand Size 40/70							
7,028.9		5,784.4		0.0								Stg #		12		6/12/2015		13,506.1		13,508.6		6100.00		6225.00							
7,228.0		5,792.0		0.0								Additive Proppant				Type PW 30/50				Amount 102,925.0		Units lb		Sand Size 30/50							
7,294.9		5,793.0		0.0								Additive Proppant				Type PW 40/70				Amount 1,819.0		Units lb		Sand Size 40/70							
7,493.1		5,742.0		0.0								Stg #		13		6/12/2015		13,310.3		13,312.8		5507.00		5646.00							
7,652.9		5,744.0		0.0								Additive Proppant				Type PW 30/50				Amount 129,855.0		Units lb		Sand Size 30/50							
7,769.4		5,743.0		0.0								Additive Proppant				Type PW 40/70				Amount 2,650.0		Units lb		Sand Size 40/70							
7,912.1		5,743.0		0.0								Stg #		14		6/12/2015		13,116.1		13,118.6		5363.00		5502.00							
8,076.1		5,743.0		0.0								Additive Proppant				Type PW 30/50				Amount 124,294.0		Units lb		Sand Size 30/50							
8,272.0		5,743.7		0.0								Additive Proppant				Type PW 40/70				Amount 2,721.0		Units lb		Sand Size 40/70							
8,338.9		5,744.0		0.0								Stg #		15		6/12/2015		12,918.8		12,921.4		5389.00		5532.00							
8,528.9		5,742.8		0.0								Additive Proppant				Type PW 30/50				Amount 130,264.0		Units lb		Sand Size 30/50							
8,690.0		5,744.4		0.0								Additive Proppant				Type PW 40/70				Amount 3,022.0		Units lb		Sand Size 40/70							
8,796.6		5,747.0		0.0								Stg #		16		6/12/2015		12,726.8		12,729.3		5454.00		5599.00							
8,944.9		5,751.0		0.0								Additive Proppant				Type PW 30/50				Amount 129,476.0		Units lb		Sand Size 30/50							
9,101.0		5,753.0		0.0								Additive Proppant				Type PW 40/70				Amount 3,040.0		Units lb		Sand Size 40/70							
9,253.0		5,753.0		0.0								Stg #		17		6/12/2015		12,726.8		12,729.3		5454.00		5599.00							
9,315.0		5,753.0		0.0								Additive Proppant				Type PW 30/50				Amount 129,476.0		Units lb		Sand Size 30/50							
9,472.1		5,752.0		0.0								Additive Proppant				Type PW 40/70				Amount 3,040.0		Units lb		Sand Size 40/70							
9,610.9		5,750.0		0.0								Stg #		18		6/12/2015		12,726.8		12,729.3		5454.00		5599.00							
9,701.1		5,746.0		0.0								Additive Proppant				Type PW 30/50				Amount 129,476.0		Units lb		Sand Size 30/50							
9,834.0		5,747.0		0.0								Additive Proppant				Type PW 40/70				Amount 3,040.0		Units lb		Sand Size 40/70							
10,034.4		5,743.0		0.0								Stg #		19		6/13/2015		12,518.9		12,521.5		5382.00		5523.00							
10,214.6		5,743.0		0.0								Additive Proppant				Type PW 30/50				Amount 126,635.0		Units lb		Sand Size 30/50							
10,400.6		5,743.0		0.0								Additive Proppant				Type PW 40/70				Amount 2,973.0		Units lb		Sand Size 40/70							
10,652.2		5,741.0		0.0								Stg #		20		6/13/2015		12,315.9		12,318.5		5383.00		5526.00							
10,966.9		5,741.0		0.0								Additive Proppant				Type PW 30/50				Amount 122,041.0		Units lb		Sand Size 30/50							
11,154.2		5,737.0		0.0								Additive Proppant				Type PW 40/70				Amount 2,991.0		Units lb		Sand Size 40/70							
11,422.2		5,738.4		0.0								Stg #		21		6/13/2015		12,111.8		12,114.3		5388.00		5531.00							
11,719.5		5,738.4		0.0								Additive Proppant				Type PW 30/50				Amount 124,739.0		Units lb		Sand Size 30/50							
11,920.3		5,737.0		0.0								Additive Proppant				Type PW 40/70				Amount 2,766.0		Units lb		Sand Size 40/70							
12,196.5		5,738.0		0.0								Stg #		22		6/13/2015		11,917.7		11,920.2		1673.00		1682.00							
12,519.0		5,741.0		0.0								Additive Proppant				Type PW 30/50				Amount 1,975.0		Units lb		Sand Size 30/50							
12,726.7		5,741.0		0.0								Additive Proppant				Type PW 40/70				Amount 2,863.0		Units lb		Sand Size 40/70							
12,921.3		5,740.0		0.0								Stg #		23		6/13/2015		11,719.5		11,722.1		5559.00		5706.00							
13,199.1		5,744.0		0.0								Additive Proppant				Type PW 30/50				Amount 124,028.0		Units lb		Sand Size 30/50							
13,506.2		5,740.0		0.0								Additive Proppant				Type PW 40/70				Amount 2,546.0		Units lb		Sand Size 40/70							
13,704.7		5,739.0		0.0								Stg #		24		6/13/2015		11,528.3		11,530.8		5471.00		5619.00							
13,982.0		5,740.0		0.0								Additive Proppant				Type PW 30/50				Amount 123,518.0		Units lb		Sand Size 30/50							
14,292.0		5,738.0		0.0								Additive Proppant				Type PW 40/70				Amount 2,494.0		Units lb		Sand Size 40/70							
14,498.4		5,739.0		0.0								Stg #		25		6/13/2015		11,347.7		11,350.2		5446.00		5592.00							
14,795.3		5,750.0		0.0								Additive Proppant				Type PW 30/50				Amount 122,204.0		Units lb		Sand Size 30/50							
15,135.5		5,759.0		0.0																											
15,343.8		5,743.0		0.0																											
15,642.4		5,747.0		0.0																											
15,819.6		5,741.0		0.0																											



Lease Review  
Well Name: HORSETAIL 08D-1703

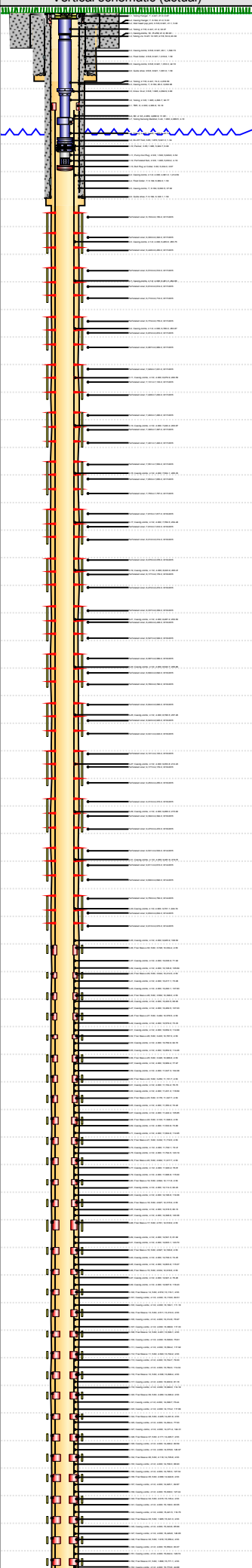
API Number 051234102100				WPC ID 1CO0761187				Well Permit Number				Field Name Wildcat				County Weld				State CO															
Well Configuration Type Lateral/Horizontal								Orig KB Elv (ft) 4,983.20				Ground Elevation (ft) 4,962.20				Casing Flange Elevation (ft)				Tubing Head Elevation (ft)				Total Depth (ftKB) 15,875.0											
Original Spud Date 4/30/2015				Completion Date 6/17/2015				Asset Group Redtail				Responsible Engineer Charles Ohlson				N/S Dist (ft) 380.0				N/S Ref FNL				E/W Dist (ft) 560.0				E/W Ref FWL							
Lot		Quarter 1 NW		Quarter 2 NW		Quarter 3		Quarter 4		Section 8		Section Suffix		Section Type		Township 10		Township N/S Dir N		Range 57		Range E/W Dir W		Meridian											
Lateral/Horizontal - Original Hole, 9/11/2015 10:32:53 AM												Additive Proppant				Type PW 40/70				Amount 2,623.0				Units lb		Sand Size 40/70									
MD (ftKB)		D (ft KB)		n ( )		c ( )		l ( )		Vertical schematic (actual)		Logs		Stg # 24		Start Date 6/13/2015				Top Depth (ftKB) 11,151.7				Bottom Depth (ftKB) 11,154.2				Vol Clean Pump (bbl) 5506.00				Vol Slurry (bbl) 5657.00			
53.8		0.0		0.0								Additive Proppant		Type PW 30/50				Amount 131,405.0				Units lb		Sand Size 30/50											
1,618.4		1,612.2		5.0				Additive Proppant				Type PW 40/70				Amount 2,474.0				Units lb		Sand Size 40/70													
4,893.0		4,884.1		4.4								Stg # 25		Start Date 6/13/2015				Top Depth (ftKB) 10,966.8				Bottom Depth (ftKB) 10,969.4				Vol Clean Pump (bbl) 5418.00				Vol Slurry (bbl) 5560.00					
4,986.5		4,987.4		3.3								Additive Proppant		Type PW 30/50				Amount 121,758.0				Units lb		Sand Size 30/50											
5,022.6		4,989.4		2.0								Additive Proppant		Type PW 40/70				Amount 2,424.0				Units lb		Sand Size 40/70											
5,035.1		5,005.9		2.2								Stg # 26		Start Date 6/13/2015				Top Depth (ftKB) 10,767.3				Bottom Depth (ftKB) 10,769.9				Vol Clean Pump (bbl) 5425.00				Vol Slurry (bbl) 5569.00					
6,129.6		6,129.4		0.0								Additive Proppant		Type PW 30/50				Amount 123,461.0				Units lb		Sand Size 30/50											
6,205.7		6,124.1		0.0								Additive Proppant		Type PW 40/70				Amount 2,743.0				Units lb		Sand Size 40/70											
6,450.1		6,294.7		0.0								Stg # 27		Start Date 6/13/2015				Top Depth (ftKB) 10,576.5				Bottom Depth (ftKB) 10,579.0				Vol Clean Pump (bbl) 5549.00				Vol Slurry (bbl) 5696.00					
6,611.9		6,721.1		0.0								Additive Proppant		Type PW 30/50				Amount 132,336.0				Units lb		Sand Size 30/50											
6,726.1		6,781.1		0.0								Additive Proppant		Type PW 40/70				Amount 2,926.0				Units lb		Sand Size 40/70											
6,874.0		6,781.0		0.0								Stg # 28		Start Date 6/13/2015				Top Depth (ftKB) 10,398.0				Bottom Depth (ftKB) 10,400.5				Vol Clean Pump (bbl) 5552.00				Vol Slurry (bbl) 5701.00					
7,028.9		6,784.4		0.0								Additive Proppant		Type PW 30/50				Amount 135,028.0				Units lb		Sand Size 30/50											
7,228.0		6,792.0		0.0								Additive Proppant		Type PW 40/70				Amount 3,310.0				Units lb		Sand Size 40/70											
7,294.9		6,730.0		0.0								Stg # 29		Start Date 6/13/2015				Top Depth (ftKB) 10,214.5				Bottom Depth (ftKB) 10,217.1				Vol Clean Pump (bbl) 5560.00				Vol Slurry (bbl) 5711.00					
7,493.1		6,742.0		0.0								Additive Proppant		Type PW 30/50				Amount 132,801.0				Units lb		Sand Size 30/50											
7,652.9		6,744.0		0.0								Additive Proppant		Type PW 40/70				Amount 3,371.0				Units lb		Sand Size 40/70											
7,769.4		6,743.0		0.0								Stg # 30		Start Date 6/13/2015				Top Depth (ftKB) 10,034.4				Bottom Depth (ftKB) 10,036.9				Vol Clean Pump (bbl) 5425.00				Vol Slurry (bbl) 5577.00					
8,528.9		6,742.0		0.0								Additive Proppant		Type PW 30/50				Amount 134,271.0				Units lb		Sand Size 30/50											
8,690.0		6,744.0		0.0								Additive Proppant		Type PW 40/70				Amount 3,401.0				Units lb		Sand Size 40/70											
8,796.6		6,743.0		0.0								Stg # 31		Start Date 6/14/2015				Top Depth (ftKB) 9,750.0				Bottom Depth (ftKB) 9,915.0				Vol Clean Pump (bbl) 5852.00				Vol Slurry (bbl) 6005.00					
8,944.9		6,750.0		0.0								Additive Proppant		Type PW 30/50				Amount 133,444.0				Units lb		Sand Size 30/50											
9,101.0		6,753.0		0.0								Additive Proppant		Type PW 40/70				Amount 2,726.0				Units lb		Sand Size 40/70											
9,253.0		6,753.0		0.0								Stg # 32		Start Date 6/14/2015				Top Depth (ftKB) 9,531.0				Bottom Depth (ftKB) 9,692.0				Vol Clean Pump (bbl) 5464.00				Vol Slurry (bbl) 5597.00					
9,315.0		6,753.0		0.0								Additive Proppant		Type PW 30/50				Amount 117,271.0				Units lb		Sand Size 30/50											
9,472.1		6,752.0		0.0								Additive Proppant		Type PW 40/70				Amount 2,803.0				Units lb		Sand Size 40/70											
9,610.9		6,750.0		0.0								Stg # 33		Start Date 6/16/2015				Top Depth (ftKB) 9,313.0				Bottom Depth (ftKB) 9,472.0				Vol Clean Pump (bbl) 6249.00				Vol Slurry (bbl) 6399.00					
9,701.1		6,745.0		0.0								Additive Proppant		Type PW 30/50				Amount 131,787.0				Units lb		Sand Size 30/50											
9,834.0		6,747.0		0.0								Additive Proppant		Type PW 40/70				Amount 2,861.0				Units lb		Sand Size 40/70											
10,034.4		6,742.0		0.0								Stg # 34		Start Date 6/16/2015				Top Depth (ftKB) 9,101.0				Bottom Depth (ftKB) 9,255.0				Vol Clean Pump (bbl) 5489.00				Vol Slurry (bbl) 5628.00					
10,214.6		6,740.0		0.0								Additive Proppant		Type PW 30/50				Amount 119,657.0				Units lb		Sand Size 30/50											
10,400.6		6,740.0		0.0								Additive Proppant		Type PW 40/70				Amount 2,390.0				Units lb		Sand Size 40/70											
10,652.2		6,741.0		0.0								Stg # 35		Start Date 6/16/2015				Top Depth (ftKB) 8,844.0				Bottom Depth (ftKB) 9,043.0				Vol Clean Pump (bbl) 5321.00				Vol Slurry (bbl) 5445.00					
10,966.9		6,741.0		0.0								Additive Proppant		Type PW 30/50				Amount 97,423.0				Units lb		Sand Size 30/50											
11,154.2		6,737.0		0.0								Additive Proppant		Type PW 40/70				Amount 2,872.0				Units lb		Sand Size 40/70											
11,422.2		6,734.0		0.0								Stg # 36		Start Date 6/16/2015				Top Depth (ftKB) 8,587.0				Bottom Depth (ftKB) 8,782.0				Vol Clean Pump (bbl) 5613.00				Vol Slurry (bbl) 5763.00					
12,196.5		6,735.0		0.0								Additive Proppant		Type PW 30/50				Amount 110,956.0				Units lb		Sand Size 30/50											
12,519.0		6,741.0		0.0								Additive Proppant		Type PW 40/70				Amount 1,779.0				Units lb		Sand Size 40/70											
12,726.7		6,741.0		0.0								Stg # 37		Start Date 6/16/2015				Top Depth (ftKB) 8,337.0				Bottom Depth (ftKB) 8,529.0				Vol Clean Pump (bbl) 5529.00				Vol Slurry (bbl) 5676.00					
12,921.3		6,740.0		0.0								Additive Proppant		Type PW 30/50				Amount 125,998.0				Units lb		Sand Size 30/50											
13,199.1		6,746.0		0.0								Additive Proppant		Type PW 40/70				Amount 2,618.0				Units lb		Sand Size 40/70											
13,506.2		6,740.0		0.0								Stg # 38		Start Date 6/16/2015				Top Depth (ftKB) 8,076.0				Bottom Depth (ftKB) 8,274.0				Vol Clean Pump (bbl) 5570.00				Vol Slurry (bbl) 5719.00					
13,704.7		6,735.0		0.0								Additive Proppant		Type PW 30/50				Amount 129,657.0				Units lb		Sand Size 30/50											
13,982.0		6,740.0		0.0								Additive Proppant		Type PW 40/70				Amount 3,136.0				Units lb		Sand Size 40/70											
14,292.0		6,736.0		0.0								Stg # 39		Start Date 6/16/2015				Top Depth (ftKB) 7,815.0				Bottom Depth (ftKB) 8,014.0				Vol Clean Pump (bbl) 5409.00				Vol Slurry (bbl) 5540.00					
14,498.4		6,730.0		0.0								Additive Proppant		Type PW 30/50				Amount 107,162.0				Units lb		Sand Size 30/50											
14,795.3		6,731.0		0.0																															
15,135.5		6,736.0		0.0																															
15,343.8		6,740.0		0.0																															
15,642.4		6,740.0		0.0																															
15,819.6		6,742.0		0.0																															





Lease Review

Well Name: HORSETAIL 08D-1703

API Number 051234102100				WPC ID 1CO0761187				Well Permit Number				Field Name Wildcat				County Weld				State CO													
Well Configuration Type Lateral/Horizontal								Orig KB Elv (ft) 4,983.20				Ground Elevation (ft) 4,962.20				Casing Flange Elevation (ft)				Tubing Head Elevation (ft)				Total Depth (ftKB) 15,875.0									
Original Spud Date 4/30/2015				Completion Date 6/17/2015				Asset Group Redtail				Responsible Engineer Charles Ohlson				N/S Dist (ft) 380.0				N/S Ref FNL		E/W Dist (ft) 560.0				E/W Ref FWL							
Lot		Quarter 1 NW		Quarter 2 NW		Quarter 3		Quarter 4		Section 8		Section Suffix		Section Type		Township 10		Township N/S Dir N		Range 57		Range E/W Dir W		Meridian									
Lateral/Horizontal - Original Hole, 9/11/2015 10:32:54 AM												Additive Proppant				Type PW 40/70				Amount 2,522.0				Units lb		Sand Size 40/70							
MD (ftKB)		D (ft KB)		n ( )		c ( )		l ( )		Vertical schematic (actual)		Logs		Stg # 40		Start Date 6/17/2015				Top Depth (ftKB) 7,551.0				Bottom Depth (ftKB) 7,757.0				Vol Clean Pump (bbl) 5578.00				Vol Slurry (bbl) 5730.00	
53.8		0.0		0.0		0.0		0.0						Additive Proppant				Type PW 30/50				Amount 123,716.0				Units lb		Sand Size 30/50					
Additive Proppant				Type PW 40/70				Amount 2,621.0						Units lb		Sand Size 40/70																	
1,618.4		1,612.2		0.0		0.0		0.0						Stg # 41		Start Date 6/17/2015				Top Depth (ftKB) 7,293.0				Bottom Depth (ftKB) 7,493.0				Vol Clean Pump (bbl) 4759.00				Vol Slurry (bbl) 4849.00	
4,893.0		4,884.1		4.4		0.0		0.0						Additive Proppant				Type PW 30/50				Amount 72,493.0				Units lb		Sand Size 30/50					
4,986.5		4,987.4		0.0		0.0		0.0						Additive Proppant				Type PW 40/70				Amount 2,615.0				Units lb		Sand Size 40/70					
5,022.6		4,989.4		0.0		0.0		0.0						Stg # 42		Start Date 6/17/2015				Top Depth (ftKB) 7,029.0				Bottom Depth (ftKB) 7,230.0				Vol Clean Pump (bbl) 5490.00				Vol Slurry (bbl) 5640.00	
5,035.1		5,005.9		0.0		0.0		0.0						Additive Proppant				Type PW 30/50				Amount 122,737.0				Units lb		Sand Size 30/50					
6,129.6		6,124.3		0.0		0.0		0.0						Additive Proppant				Type PW 40/70				Amount 2,135.0				Units lb		Sand Size 40/70					
6,205.7		6,124.1		0.0		0.0		0.0						Stg # 43		Start Date 6/17/2015				Top Depth (ftKB) 6,774.0				Bottom Depth (ftKB) 6,969.0				Vol Clean Pump (bbl) 5401.00				Vol Slurry (bbl) 5546.00	
6,450.1		6,294.7		0.0		0.0		0.0						Additive Proppant				Type PW 30/50				Amount 108,333.0				Units lb		Sand Size 30/50					
6,611.9		6,271.1		0.0		0.0		0.0						Additive Proppant				Type PW 40/70				Amount 1,922.0				Units lb		Sand Size 40/70					
6,726.1		6,781.1		0.0		0.0		0.0						Stg # 44		Start Date 6/17/2015				Top Depth (ftKB) 6,510.0				Bottom Depth (ftKB) 6,712.0				Vol Clean Pump (bbl) 5430.00				Vol Slurry (bbl) 5577.00	
6,874.0		6,781.0		0.0		0.0		0.0						Additive Proppant				Type PW 30/50				Amount 115,964.0				Units lb		Sand Size 30/50					
7,028.9		6,784.4		0.0		0.0		0.0						Additive Proppant				Type PW 40/70				Amount 1,922.0				Units lb		Sand Size 40/70					
7,228.0		6,792.0		0.0		0.0		0.0						Stg # 45		Start Date 6/17/2015				Top Depth (ftKB) 6,153.0				Bottom Depth (ftKB) 6,450.0				Vol Clean Pump (bbl) 5423.00				Vol Slurry (bbl) 5573.00	
7,294.9		6,739.0		0.0		0.0		0.0						Additive Proppant				Type PW 30/50				Amount 122,373.0				Units lb		Sand Size 30/50					
7,493.1		6,742.0		0.0		0.0		0.0						Additive Proppant				Type PW 40/70				Amount 2,679.0				Units lb		Sand Size 40/70					
7,652.9		6,744.0		0.0		0.0		0.0						Stg # 46		Start Date 6/17/2015				Top Depth (ftKB) 6,153.0				Bottom Depth (ftKB) 6,450.0				Vol Clean Pump (bbl) 5423.00				Vol Slurry (bbl) 5573.00	
7,769.4		6,744.0		0.0		0.0		0.0						Additive Proppant				Type PW 30/50				Amount 122,373.0				Units lb		Sand Size 30/50					
7,912.1		6,740.0		0.0		0.0		0.0						Additive Proppant				Type PW 40/70				Amount 2,679.0				Units lb		Sand Size 40/70					
8,076.1		6,740.4		0.0		0.0		0.0						Additive Proppant				Type PW 30/50				Amount 122,373.0				Units lb		Sand Size 30/50					
8,272.0		6,740.7		0.0		0.0		0.0						Additive Proppant				Type PW 40/70				Amount 2,679.0				Units lb		Sand Size 40/70					
Tubing set at 5,035.0ftKB on 6/30/2015 06:00																																	
Set Depth (ftKB) 5,035.0												Comment												Run Date 6/30/2015				Pull Date					
Item Des												OD (in)				ID (in)				Len (ft)				Top (ftKB)				Btm (ftKB)					
Tubing Hanger												7				2.441				0.87				21.0				21.9					
Tubing												2 7/8				2.441				32.07				21.9				53.9					
Tubing Jts 10.2ft 10.18ft												2 7/8								20.38				53.9				74.3					
Tubing												2 7/8				2.441				4,818.58				74.3				4,892.9					
Cross Over												3 5/8				1.995				0.80				4,892.9				4,893.7					
Tubing												2 3/8				1.995				92.77				4,893.7				4,986.5					
Tubing Sensing Mandrel												3.44				1.960				4.10				4,986.5				4,990.6					
Tubing												2 3/8				1.995				30.77				4,990.6				5,021.3					
On-Off Tool												3.65				1.870				1.34				5,021.3				5,022.7					
Packer												3.65				1.995				6.96				5,022.7				5,029.6					
Pump Out Plug												2 3/8				1.500				0.52				5,029.6				5,030.2					
Perforated Sub												2 3/8				1.995				4.16				5,030.2				5,034.3					
Bull Plug w/ Collar												3.6								0.67				5,034.3				5,035.0					
Rod Strings																																	
<des> on <dttrun>																																	
Rod Description																Run Date								Pull Date									
Item Des																OD (in)				Len (ft)				Top (ftKB)				Btm (ftKB)					
Other Strings																																	
Set Depth (ftKB)												Comment												Run Date				Pull Date					
Item Des												OD (in)				Len (ft)				Top (ftKB)				Btm (ftKB)									
Other In Hole																																	
Des												OD (in)				Run Date				Pull Date				Top (ftKB)				Btm (ftKB)					
Frac Plug												4				6/17/2015				6/25/2015				6,482.0				6,484.0					
Frac Plug												4				6/17/2015				6/25/2015				6,746.0				6,748.0					
Frac Plug												4				6/17/2015				6/25/2015				7,001.0				7,003.0					
Frac Plug												4				6/17/2015				6/25/2015				7,237.0				7,239.0					
Frac Plug												4				6/17/2015				6/25/2015				7,523.0				7,525.0					
Frac Plug												4				6/17/2015				6/25/2015				7,787.0				7,789.0					
Frac Plug												4				6/16/2015				6/25/2015				8,048.0				8,050.0					
Frac Plug												4				6/16/2015				6/25/2015				8,309.0				8,311.0					
Frac Plug												4				6/16/2015				6/25/2015				8,559.0				8,561.0					
Frac Plug												4				6/16/2015				6/25/2015				8,816.0				8,818.0					
Frac Plug												4				6/16/2015				6/25/2015				9,073.0				9,075.0					
Frac Plug												4				6/16/2015				6/25/2015				9,285.0				9,287.0					
Frac Plug												4				6/16/2015				6/25/2015				9,503.0				9,505.0					
Frac Plug												4				6/14/2015				6/25/2015				9,722.0				9,724.0					
Frac Plug												4				6/14/2015				6/25/2015				9,945.0				9,947.0					



Lateral/Horizontal - Original Hole, 9/11/2015 10:32:55 AM					Bottom Hole Cores				
MD	D (ft)	n c			Date	Core #	Top (ftKB)	Btm (ftKB)	Recov (ft)

WD (ftKB )	TD (ft)	Vertical schematic (actual)	Logs
53.8	0.0		
1,618.4	1.0		
4,893.0	4.4		
4,986.5	5.3		
5,022.6	5.6		
5,035.1	5.7		
6,129.6	6.8		
6,205.7	7.1		
6,450.1	7.4		
6,611.9	7.7		
6,726.1	7.9		
6,874.0	8.1		
7,028.9	8.3		
7,228.0	8.6		
7,294.9	8.7		
7,493.1	9.0		
7,652.9	9.3		
7,789.4	9.5		
7,912.1	9.7		
8,076.1	10.0		
8,272.0	10.3		
8,338.9	10.4		
8,528.9	10.6		
8,690.0	10.8		
8,796.6	11.0		
8,944.9	11.2		
9,101.0	11.5		
9,253.0	11.8		
9,315.0	11.9		
9,472.1	12.1		
9,610.9	12.3		
9,701.1	12.4		
9,834.0	12.6		
10,034.4	12.9		
10,214.6	13.2		
10,400.6	13.5		
10,652.2	13.8		
10,966.9	14.1		
11,154.2	14.4		
11,422.2	14.7		
11,719.5	15.0		
11,920.3	15.3		
12,196.5	15.6		
12,519.0	15.9		
12,726.7	16.2		
12,921.3	16.5		
13,199.1	16.8		
13,506.2	17.1		
13,704.7	17.4		
13,982.0	17.7		
14,292.0	18.0		
14,498.4	18.3		
14,795.3	18.6		
15,135.5	18.9		
15,343.8	19.2		
15,642.4	19.5		
15,819.6	19.8		