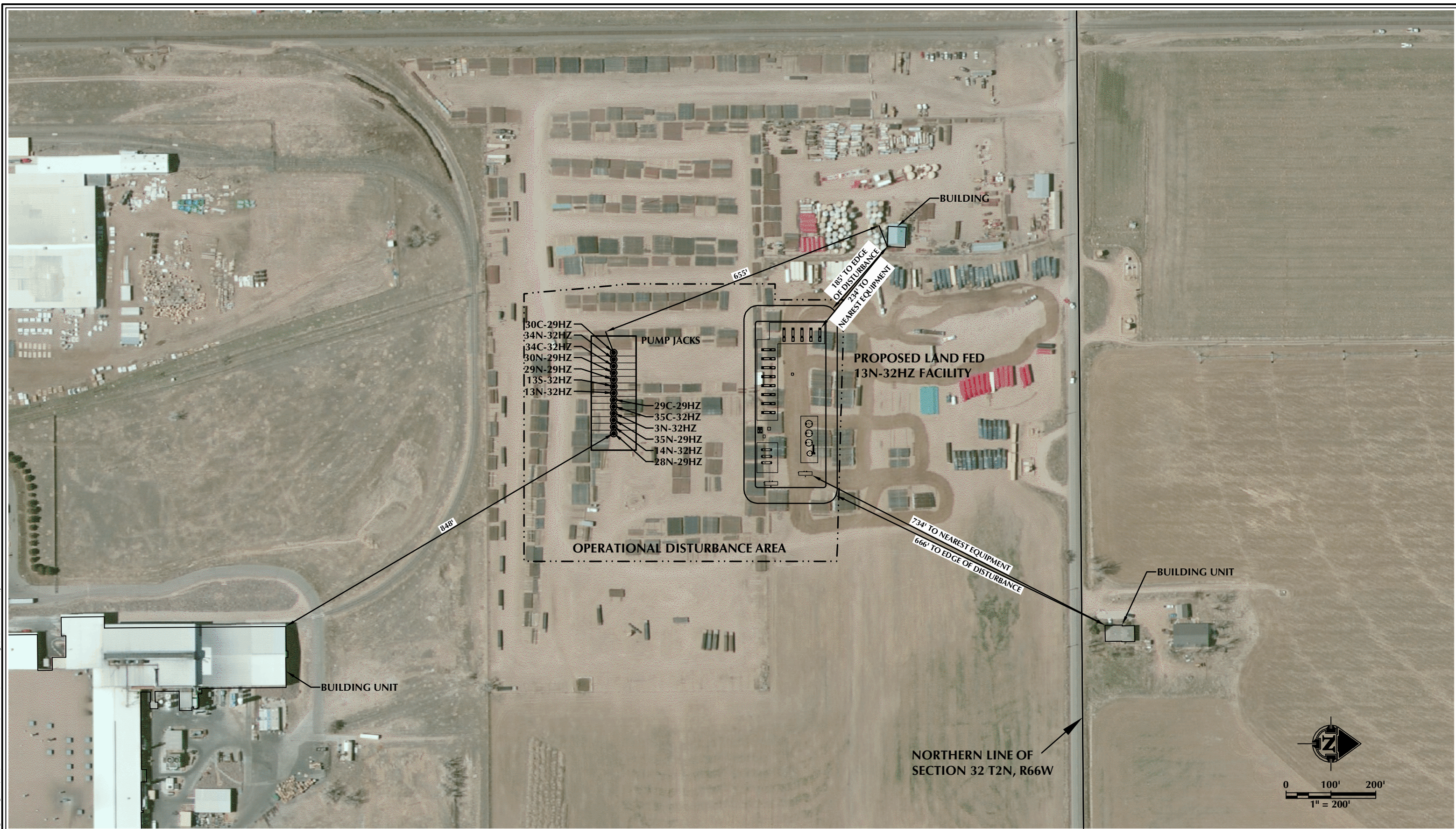


K:\ANADARKO\2013\2013_111_COLORADO_T2NR66W_SEC32\DWG\LOCATION DRAWING\LOVELL D LAND.dwg, 6/11/2015 10:03:29 AM, jke



NOTES:
 1. EQUIPMENT PLACEMENT IS APPROXIMATE AND SUBJECT TO MINOR MODIFICATION DUE TO SPECIFIC CIRCUMSTANCES.

DATA SOURCES:
 - AERIAL COURTESY OF ESRI, INC.
 - WATER WELLS COURTESY OF COLORADO DIVISION OF WATER RESOURCES

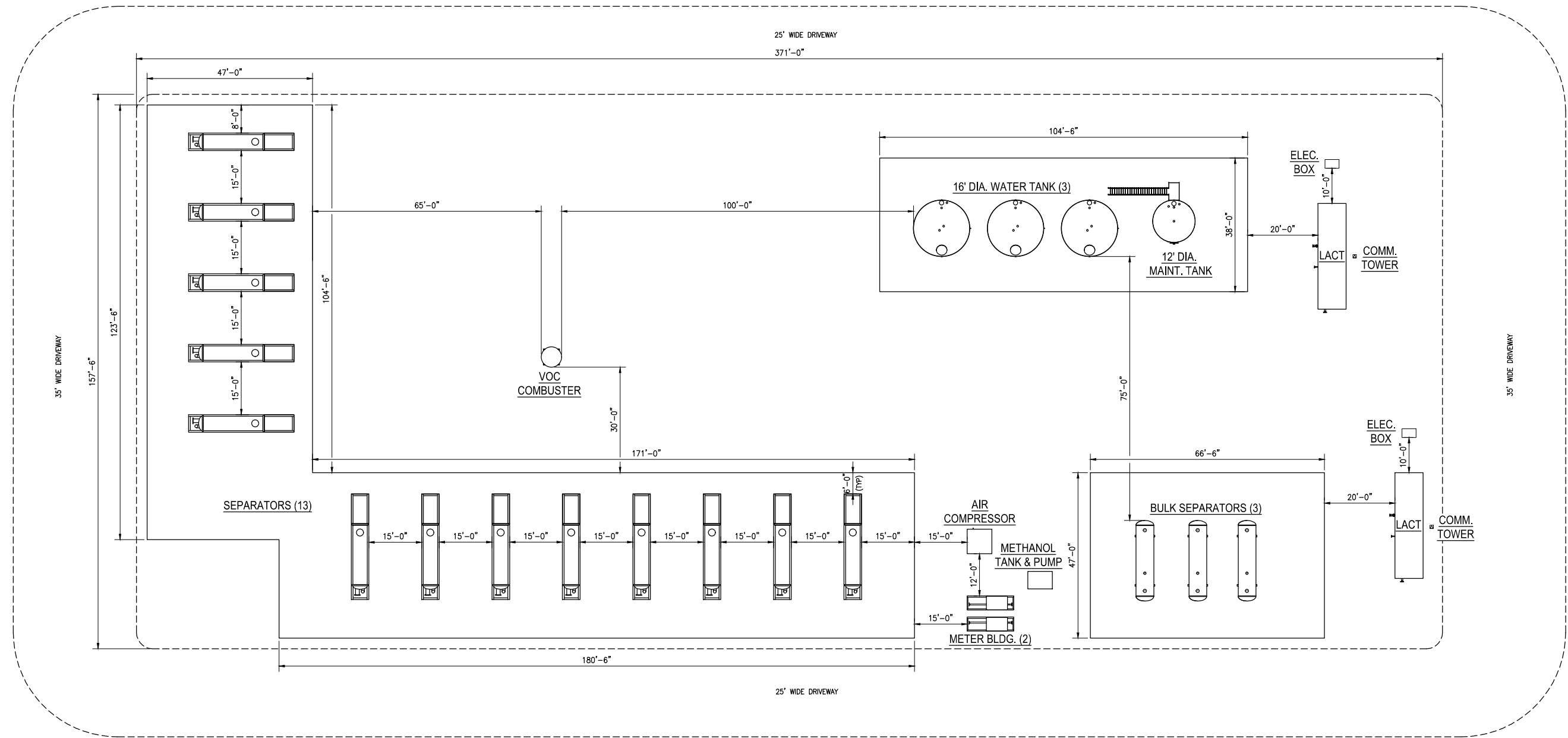
609 CONSULTING, LLC
 LOVELAND OFFICE
 1635 Foxtrail Drive, Suite 204
 Loveland, Colorado 80538
 Phone 970-776-4331
 SHERIDAN OFFICE
 1095 Saberton Avenue
 Sheridan, Wyoming 82801
 Phone 307-674-0609

Anadarko
 Petroleum Corporation
 1099 18th Street
 Denver, CO 80202

SCALE: 1" = 200'
 DATE SURVEYED: 3/24/15
 DATE: 6/10/15
 DRAFTER: JFE
 REVISED:

FACILITY LAYOUT AERIAL
 LAND FED 13N-32HZ
 LOCATED IN SECTION 32, T2N, R66W, 6TH P.M.
 WELD COUNTY, COLORADO

THIS DRAWING AND THE DESIGN IT COVERS ARE CONFIDENTIAL AND REMAIN THE PROPERTY OF ANADARKO PETROLEUM CORPORATION AND SHALL NOT BE DISCLOSED TO OTHERS OR REPRODUCED IN ANY MANNER OR USED FOR ANY PURPOSE WHATSOEVER EXCEPT BY WRITTEN PERMISSION BY THE OWNER.



PLOT PLAN
SCALE: AS NOTED

NOTES:

REFERENCE DRAWINGS		REVISIONS			
DWG. NO.	TITLE	NO.	DESCRIPTION	DATE	DATE
		1	ISSUED FOR PERMIT	06/08/15	06/08/15
		2	ISSUED FOR PERMIT	04/06/15	04/06/15
		3	ISSUED FOR PERMIT	11/06/14	11/06/14



PIPELINE STRATEGIES & INTEGRITY

GREATER WATTENBERG AREA		
LAND 18-32HZ		
PLOT PLAN WITH EQUIPMENT LOCATIONS		
DRAWN BY: MAK	CREATION DATE: 10/07/14	WO No.:
APPROVED:	APPR. DATE:	DWG. No.:
SCALE: 1" = 15' (FULL SIZE)		LLY-GA-101
SHEET No. 1 OF 1		2

FILE LOCATION: P:\Engineering\Projects\Anadarko\Greater Wattenberg Area\Facility and Permit\LLY-GA-101.dwg LAST SAVED: 6/8/2015 BY: Michele Knudsen PLOT STYLE: Anadarko Piping 11x17.ctb