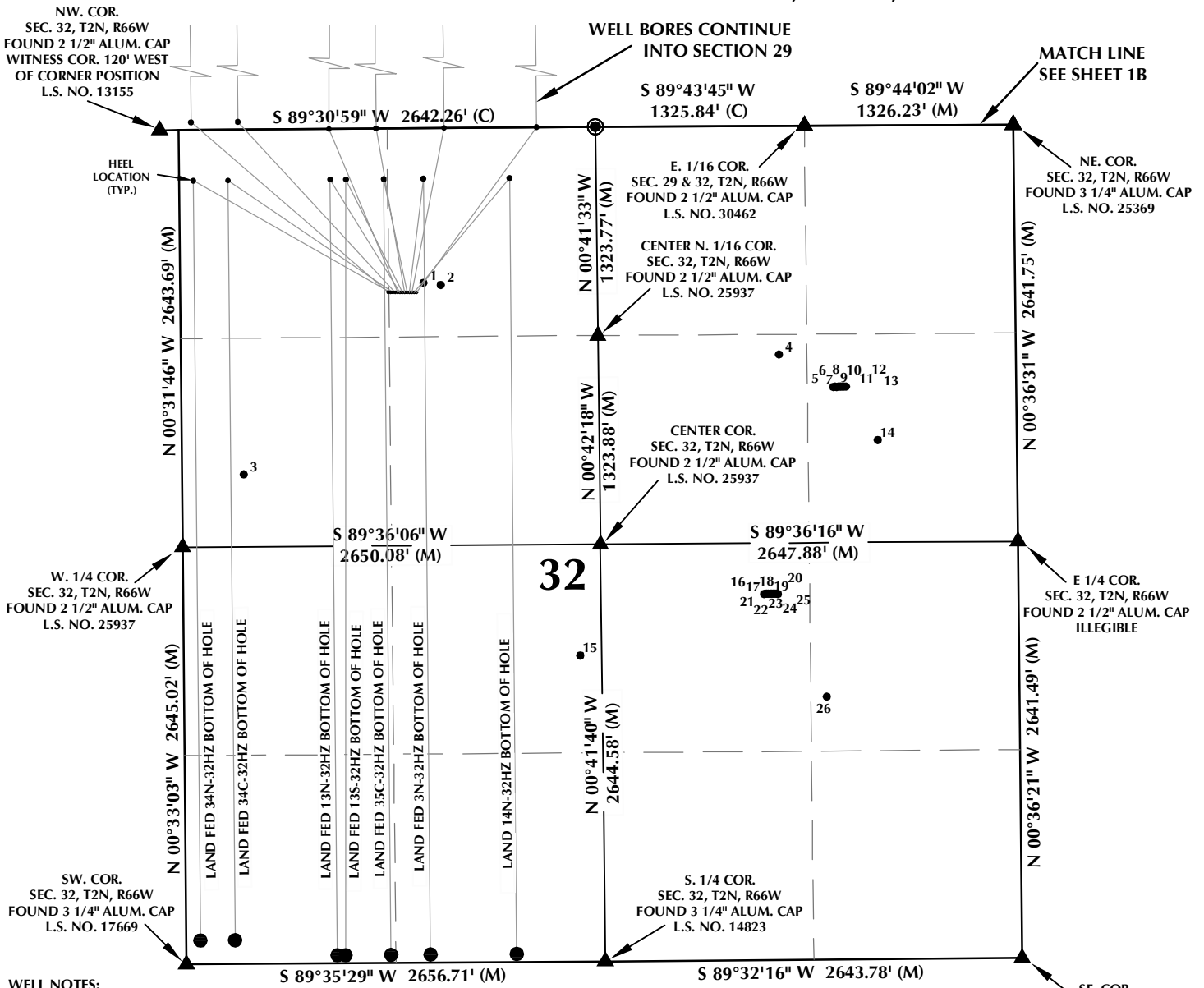


MULTI-WELL PLAN SECTION 32, T2N, R66W



WELL NOTES:

LAND FED 30C-29HZ
SURFACE: 1039' FNL, 1319' FWL
BOTTOM: 1' FNL, 78' FWL

LAND FED 34N-32HZ
SURFACE: 1039' FNL, 1334' FWL
BOTTOM: 150' FSL, 89' FWL

LAND FED 34C-32HZ
SURFACE: 1039' FNL, 1349' FWL
BOTTOM: 150' FSL, 339' FWL

LAND FED 30N-29HZ
SURFACE: 1039' FNL, 1364' FWL
BOTTOM: 1' FNL, 350' FWL

LAND FED 29N-29HZ
SURFACE: 1039' FNL, 1379' FWL
BOTTOM: 1' FNL, 1027' FWL

LAND FED 13S-32HZ
SURFACE: 1040' FNL, 1394' FWL
BOTTOM: 50' FSL, 1009' FWL

LAND FED 13N-32HZ
SURFACE: 1040' FNL, 1409' FWL
BOTTOM: 50' FSL, 957' FWL

LAND FED 29C-29HZ
SURFACE: 1040' FNL, 1424' FWL
BOTTOM: 1' FNL, 1251' FWL

LAND FED 35C-32HZ
SURFACE: 1040' FNL, 1439' FWL
BOTTOM: 50' FSL, 1297' FWL

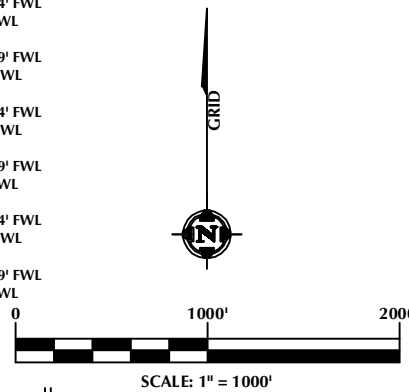
LAND FED 3N-32HZ
SURFACE: 1040' FNL, 1454' FWL
BOTTOM: 50' FSL, 1548' FWL

LAND FED 35N-29HZ
SURFACE: 1040' FNL, 1469' FWL
BOTTOM: 1' FNL, 1682' FWL

LAND 14N-32HZ
SURFACE: 1040' FNL, 1484' FWL
BOTTOM: 50' FSL, 2095' FWL

LAND 28N-29HZ
SURFACE: 1040' FNL, 1499' FWL
BOTTOM: 1' FNL, 2269' FWL

- NOTES:**
- ▲ INDICATES FOUND SECTION CORNER
 - INDICATES CALCULATED CORNER
 - BASIS OF BEARING DERIVED FROM COLORADO COORDINATE SYSTEM 1983 NORTH ZONE UNLESS OTHERWISE NOTED.
 - ALL MEASURED DISTANCES ARE GRID. COMBINED SCALE FACTOR: .99972835
 - WELL FOOTAGES ARE MEASURED AT RIGHT ANGLES TO THE SECTION LINES.



WELL PAD - LAND FED 13N-32HZ

MULTI-WELL PLAN
LAND FED 30C-29HZ,
LAND FED 34N-32HZ, LAND FED 34C-32HZ, LAND FED 30N-29HZ,
LAND FED 29N-29HZ, LAND FED 13S-32HZ, LAND FED 13N-32HZ,
LAND FED 29C-29HZ, LAND FED 35C-32HZ, LAND FED 3N-32HZ,
LAND FED 35N-29HZ, LAND 14N-32HZ & LAND 28N-29HZ
LOCATED IN SECTIONS 29 & 32
T2N, R66W, 6TH P.M.
WELD COUNTY, COLORADO

**Kerr-McGee Oil &
Gas Onshore L.P.**
1099 18th Street
Denver, Colorado 80202



CONSULTING, LLC

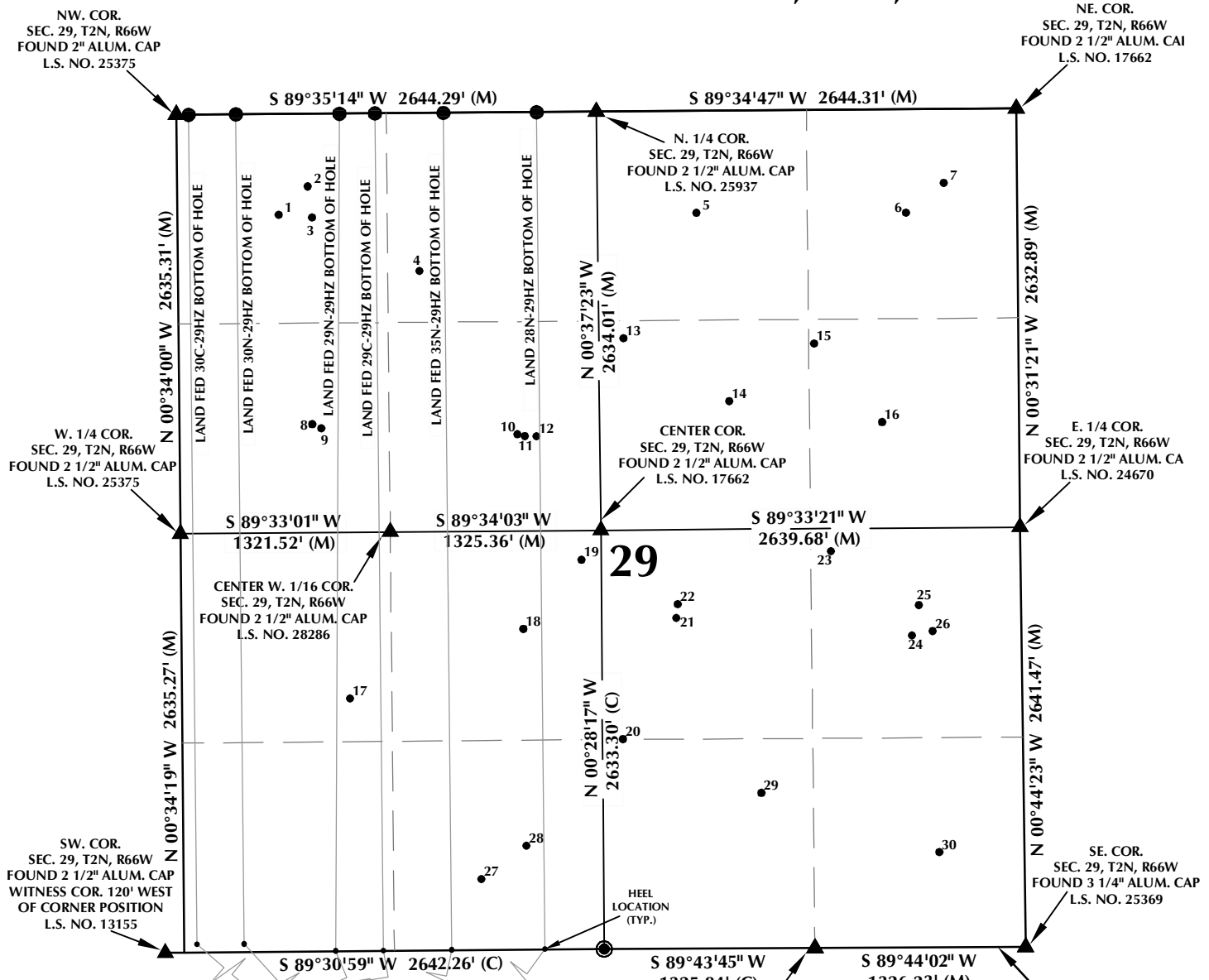
SHERIDAN OFFICE
1095 Saberton Avenue
Sheridan, Wyoming 82801
Phone 307-674-0609

LOVELAND OFFICE
1635 Foxtrail Drive, Suite 204
Loveland, Colorado 80538
Phone 970-776-4331

DRAFTED BY:	LMO	CHECKED BY:	BJR	SHEET NO: 1A 1A OF 2
DATE DRAFTED:	6/5/15	DATE SURVEYED:	3/25/15	
REVISED:		FILE NAME:	13-113	

K:\MADARKO\2013\113_COLORADO_T2NR66W_SEC32\PLATS\LOYD\MULTI-WELL PLAN SHEET 1.dwg, 6/12/2015 10:08:02 AM, jike

MULTI-WELL PLAN SECTION 29, T2N, R66W



WELL NOTES:

LAND FED 30C-29HZ
SURFACE: 1039' FNL, 1319' FWL
BOTTOM: 1' FNL, 78' FWL

LAND FED 34N-32HZ
SURFACE: 1039' FNL, 1334' FWL
BOTTOM: 150' FSL, 89' FWL

LAND FED 34C-32HZ
SURFACE: 1039' FNL, 1349' FWL
BOTTOM: 150' FSL, 339' FWL

LAND FED 30N-29HZ
SURFACE: 1039' FNL, 1364' FWL
BOTTOM: 1' FNL, 350' FWL

LAND FED 29N-29HZ
SURFACE: 1039' FNL, 1379' FWL
BOTTOM: 1' FNL, 1027' FWL

LAND FED 13S-32HZ
SURFACE: 1040' FNL, 1394' FWL
BOTTOM: 50' FSL, 1009' FWL

LAND FED 13N-32HZ
SURFACE: 1040' FNL, 1409' FWL
BOTTOM: 50' FSL, 957' FWL

LAND FED 29C-29HZ
SURFACE: 1040' FNL, 1424' FWL
BOTTOM: 1' FNL, 1251' FWL

LAND FED 35C-32HZ
SURFACE: 1040' FNL, 1439' FWL
BOTTOM: 50' FSL, 1297' FWL

LAND FED 3N-32HZ
SURFACE: 1040' FNL, 1454' FWL
BOTTOM: 50' FSL, 1548' FWL

LAND FED 35N-29HZ
SURFACE: 1040' FNL, 1469' FWL
BOTTOM: 1' FNL, 1682' FWL

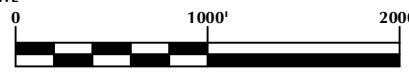
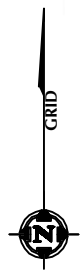
LAND 14N-32HZ
SURFACE: 1040' FNL, 1484' FWL
BOTTOM: 50' FSL, 2095' FWL

LAND 28N-29HZ
SURFACE: 1040' FNL, 1499' FWL
BOTTOM: 1' FNL, 2269' FWL

HEEL LOCATION (TYP.)
S 89°43'45" W 1325.84' (C)
E. 1/16 COR.
SEC. 29 & 32, T2N, R66W
FOUND 2 1/2" ALUM. CAP
L.S. NO. 30462

NOTES:

- ▲ INDICATES FOUND SECTION CORNER
- INDICATES CALCULATED CORNER
- BASIS OF BEARING DERIVED FROM COLORADO COORDINATE SYSTEM 1983 NORTH ZONE UNLESS OTHERWISE NOTED.
- ALL MEASURED DISTANCES ARE GRID. COMBINED SCALE FACTOR: .99972835
- WELL FOOTAGES ARE MEASURED AT RIGHT ANGLES TO THE SECTION LINES.



WELL PAD - LAND FED 13N-32HZ

MULTI-WELL PLAN
LAND FED 30C-29HZ,
LAND FED 34N-32HZ, LAND FED 34C-32HZ, LAND FED 30N-29HZ,
LAND FED 29N-29HZ, LAND FED 13S-32HZ, LAND FED 13N-32HZ,
LAND FED 29C-29HZ, LAND FED 35C-32HZ, LAND FED 3N-32HZ,
LAND FED 35N-29HZ, LAND 14N-32HZ & LAND 28N-29HZ
LOCATED IN SECTIONS 29 & 32
T2N, R66W, 6TH P.M.
WELD COUNTY, COLORADO

Kerr-McGee Oil & Gas Onshore L.P.

1099 18th Street
Denver, Colorado 80202

609 CONSULTING, LLC

SHERIDAN OFFICE
1095 Saberton Avenue
Sheridan, Wyoming 82801
Phone 307-674-0609

LOVELAND OFFICE
1635 Foxtrail Drive, Suite 204
Loveland, Colorado 80538
Phone 970-776-4331

DRAFTED BY: LMO	CHECKED BY: BJR	SHEET NO: 1B
DATE DRAFTED: 6/5/15	DATE SURVEYED: 3/25/15	1B 1B OF 2
REVISED:	FILE NAME: 13-113	

K:\MADARKO\2013\113_COLORADO_T2NR66W_SEC32\PLATS\LOYD\MULTI-WELL PLAN SHEET 1.dwg, 6/12/2015, 10:08:21 AM, jpk

MULTI-WELL PLAN SECTION 32, T2N, R66W

NUMBER	WELL NAME	API NUMBER	LATITUDE (NAD 83)	LONGITUDE (NAD 83)	SURFACE ELEVATION	TOTAL DEPTH
1	APPEL HEIRS FEDERAL 32-30DK	05-123-16616	40.099188	-104.805036	4900.5	8248
2	APPEL HEIRS FEDERAL 32-3K6	05-123-18752	40.099150	-104.804652	4899.1	8051
3	APPEL HEIRS FEDERAL W 32-05di	05-123-19736	40.095889	-104.809135	4897.9	8204
4	KEITH A CARTER UNIT 1	05-123-07767	40.097890	-104.796992	4914.4	8150
5	FEHRN 7-32SX	05-123-33203	40.097322	-104.795768	4922.8	5120
6	FEHRN 7-32	05-123-33211	40.097322	-104.795732	4923.4	8224
7	FEHRN 1-32SX	05-123-33191	40.097322	-104.795695	4922.6	5246
8	FEHRN 25-32	05-123-33192	40.097324	-104.795657	4923.3	8372
9	FEHRN 24-32	05-123-33188	40.097325	-104.795621	4922.9	8194
10	FEHRN 1-32	05-123-33190	40.097325	-104.795592	4922.8	8476
11	FEHRN 8-32	05-123-33196	40.097326	-104.795555	4922.9	8159
12	FEHRN 26-32	05-123-33209	40.097327	-104.795519	4923.1	8422
13	FEHRN 41-32	05-123-33189	40.097327	-104.795483	4923.0	8232
14	*W W FEHRN 1	05-123-09363	40.096388	-104.794770	4917.0	4850
15	PACHECO HIERS GAS UNIT 1	05-123-08406	40.092681	-104.801550	4903.9	8050
16	CARTER 10-32	05-123-33141	40.093727	-104.797379	4915.7	7704
17	CARTER 23-32	05-123-33147	40.093728	-104.797345	4916.2	8320
18	CARTER 36-32	05-123-33143	40.093728	-104.797307	4915.8	8594
19	CARTER 15-32SX	05-123-33136	40.093727	-104.797273	4915.8	5326
20	CARTER 15-32	05-123-33142	40.093728	-104.797236	4916.0	8554
21	CARTER 37-32	05-123-33144	40.093728	-104.797201	4915.7	8623
22	CARTER 16-32	05-123-33139	40.093728	-104.797167	4915.9	8432
23	CARTER 16-32SX	05-123-33145	40.093727	-104.797132	4915.7	5476
24	CARTER 9-32	05-123-33138	40.093727	-104.797094	4915.9	8198
25	CARTER 9-32SX	05-123-33140	40.093725	-104.797058	4916.0	5065
26	KEITH A CARTER UNIT 2	05-123-10829	40.091928	-104.795969	4932.3	8200

NOTES:

- * INDICATES EXISTING WELLS THAT WERE NOT SURVEYED BUT DERIVED FROM COLORADO OIL AND GAS CONSERVATION COMMISSION (COGCC).

**EXISTING WELL EXHIBIT
SECTION 32, T2N, R66W, 6TH P.M.
WELD COUNTY, COLORADO**

**Kerr-McGee Oil &
Gas Onshore L.P.
1099 18th Street
Denver, Colorado 80202**



CONSULTING, LLC

SHERIDAN OFFICE 1095 Saberton Avenue Sheridan, Wyoming 82801 Phone 307-674-0609	LOVELAND OFFICE 1635 Foxtrail Drive, Suite 204 Loveland, Colorado 80538 Phone 970-776-4331
---	--

DRAFTED BY:	LMO	CHECKED BY:	BJR	SHEET NO: 2A
DATE DRAFTED:	5/7/15	DATE SURVEYED:	3/25/15	
REVISED:		FILE NAME:	13-113	

MULTI-WELL PLAN SECTION 29, T2N, R66W

NUMBER	WELL NAME	API NUMBER	LATITUDE (NAD 83)	LONGITUDE (NAD 83)	SURFACE ELEVATION	TOTAL DEPTH
1	*APPEL 1	05-123-08026	40.114608	-104.808310	4886.0	4750
2	SHIVERS W FEDERAL 29-4JI	05-123-20083	40.115089	-104.807654	4886.2	7998
3	APPEL 2	05-123-08029	40.114553	-104.807561	4888.4	4750
4	SHIVERS GU FEDERAL 2-29	05-123-14364	40.113613	-104.805158	4887.7	7995
5	*SHIVERS 2	05-123-07894	40.114578	-104.798910	4888.0	4750
6	*SHIVERS 5	05-123-08776	40.114558	-104.794190	4906.0	4775
7	SHIVERS 41-29	05-123-19606	40.115064	-104.793342	4915.0	8010
8	*APPEL 3	05-123-09050	40.110978	-104.807590	4884.0	4792
9	APPEL 4-29	05-123-14913	40.110914	-104.807394	4889.4	8126
10	SHIVERS W FEDERAL 29-6D	05-123-19642	40.110780	-104.802978	4892.2	8158
11	ALE FEDERAL W 29-20D	05-123-28060	40.110749	-104.802811	4892.4	8192
12	APPEL (MARTIN) 1-A	05-123-08122	40.110744	-104.802550	4893.6	4730
13	VYNCKIER W 29-18	05-123-30219	40.112428	-104.800576	4892.6	7572
14	*SHIVERS 4	05-123-08775	40.111327	-104.798208	4895.0	4750
15	SHIVERS 1	05-123-07727	40.112307	-104.796284	4900.9	8088
16	*SHIVERS 3	05-123-07951	40.110938	-104.794770	4907.0	4800
17	PUTNAM 1	05-123-08542	40.106245	-104.806791	4891.3	8482
18	BRAND 1	05-123-08746	40.107421	-104.802879	4894.7	4736
19	ALE W 29-21	05-123-28065	40.108604	-104.801559	4893.6	7589
20	ALE W 29-24	05-123-28064	40.105506	-104.800657	4904.1	7587
21	*PUTNAM 1	05-123-07873	40.107588	-104.799440	4904.0	4781
22	ALE PARTNERSHIP FEDERAL W 29-10DI	05-123-19687	40.107828	-104.799402	4908.3	8130
23	ALE W 29-22	05-123-28056	40.108722	-104.795944	4930.7	8051
24	*LUCAS 1	05-123-05043	40.107258	-104.794130	4943.0	5161
25	ALE PARTNERSHIP FEDERAL W 29-9JI	05-123-19856	40.107780	-104.793978	4942.9	8008
26	ALE PARTNERSHIP 1-29	05-123-14579	40.107328	-104.793674	4947.6	7568
27	PUTNAM 24-29	05-123-19747	40.103108	-104.803871	4896.5	8055
28	*BRAND 2	05-123-09923	40.103678	-104.802850	4892.0	4860
29	PUTNAM FEDERAL 2-29	05-123-14452	40.104557	-104.797553	4923.6	8035
30	ALE PARTNERSHIP FEDERAL W 29-16JI	05-123-19897	40.103509	-104.793561	4945.7	8172

NOTES:

- * INDICATES EXISTING WELLS THAT WERE NOT SURVEYED BUT DERIVED FROM COLORADO OIL AND GAS CONSERVATION COMMISSION (COGCC).

**EXISTING WELL EXHIBIT
SECTION 29, T2N, R66W, 6TH P.M.
WELD COUNTY, COLORADO**

**Kerr-McGee Oil &
Gas Onshore L.P.
1099 18th Street
Denver, Colorado 80202**



CONSULTING, LLC

SHERIDAN OFFICE **LOVELAND OFFICE**
 1095 Saberton Avenue 1635 Foxtrail Drive, Suite 204
 Sheridan, Wyoming 82801 Loveland, Colorado 80538
 Phone 307-674-0609 Phone 970-776-4331

DRAFTED BY:	LMO	CHECKED BY:	BJR	SHEET NO: 2B
DATE DRAFTED:	5/7/15	DATE SURVEYED:	3/25/15	
REVISED:		FILE NAME:	13-113	