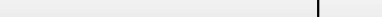




Lateral/Horizontal - Original Hole, 9/10/2015 9:04:10 AM				Wellbore Sections					
MD (ftKB)	D (ft KB)	n c l (Section Des	Wellbore Name	Start Date	Size (in)	Act Top (ftKB)	Act Btm (ftKB)
				Conductor	Original Hole	2/25/2015	24	21.0	80.0
				Surface	Original Hole	3/23/2015	13 1/2	80.0	1,840.0
				Intermediate	Original Hole	3/24/2015	8 3/4	1,840.0	6,230.0
				Lateral	Original Hole	3/27/2015	6 1/8	6,230.0	13,825.0
52.8	52.8	52.8							

Wellbore Profile		Surface Csg, 1,829.6ftKB						
Depth (ft)	Wellbore Profile	OD (in)	Wt (lb/ft)	Grade	Top (ftKB)	Btm (ftKB)	Len (ft)	Item Des
3,683.1		9 5/8	36.00	J-55	21.0	21.0	0.00	Landing Joint
4,681.8		9 5/8	36.00	J-55	21.0	28.0	7.00	Well head Pup Joint
5,181.4		9 5/8	36.00	J-55	28.0	1,785.8	1,757.82	Casing Joints
5,833.7		9 5/8	36.00	J-55	1,785.8	1,787.8	2.00	Float Collar
5,847.8		9 5/8	36.00	J-55	1,787.8	1,827.6	39.78	Casing Joints
6,213.6		9 5/8	36.00	J-55	1,827.6	1,829.6	2.00	Float Shoe

[illegible]

Wellbore Data		Perforations				
Depth (ft)	Wellbore ID	Type of Hole	Date	Top (ftKB)	Btm (ftKB)	Zone
10,101.0	S-010	Perforated Liner	6/1/2015	6,244.0	6,246.0	Niobrara, Original Hole
10,232.9	S-010	Perforated Liner	6/1/2015	6,327.0	6,329.0	Niobrara, Original Hole
10,357.9	S-010	Perforated Liner	6/1/2015	6,414.0	6,416.0	Niobrara, Original Hole
10,482.9	S-010	Perforated Liner	6/1/2015	6,475.0	6,477.0	Niobrara, Original Hole
10,617.1	S-010	Perforated Liner	6/1/2015	6,536.0	6,538.0	Niobrara, Original Hole
10,747.0	S-010	Perforated Liner	6/1/2015	6,602.0	6,604.0	Niobrara, Original Hole
10,865.2	S-010	Perforated Liner	6/1/2015	6,665.0	6,667.0	Niobrara, Original Hole
10,996.1	S-010	Perforated Liner	6/1/2015	6,727.0	6,729.0	Niobrara, Original Hole
11,118.1	S-010	Perforated Liner	6/1/2015	6,793.0	6,795.0	Niobrara, Original Hole
11,252.0	S-010	Perforated Liner	6/1/2015	6,860.0	6,862.0	Niobrara, Original Hole
11,378.9	S-010	Perforated Liner	6/1/2015	6,918.0	6,920.0	Niobrara, Original Hole
13,021.0	S-010	Perforated Liner	6/1/2015	6,984.0	6,986.0	Niobrara, Original Hole
13,187.0	S-010	Perforated Liner	5/31/2015	7,043.0	7,045.0	Niobrara, Original Hole
13,352.0	S-010	Perforated Liner	5/31/2015	7,109.0	7,111.0	Niobrara, Original Hole
13,517.1	S-010	Perforated Liner	5/31/2015	7,179.0	7,181.0	Niobrara, Original Hole
13,648.3	S-010	Perforated Liner	5/31/2015	7,234.0	7,236.0	Niobrara, Original Hole
13,731.3	S-010	Perforated Liner	5/31/2015	7,300.0	7,302.0	Niobrara, Original Hole
		Perforated Liner	5/31/2015	7,364.0	7,366.0	Niobrara, Original Hole



Lease Review
Well Name: RAZOR 11H-1415A

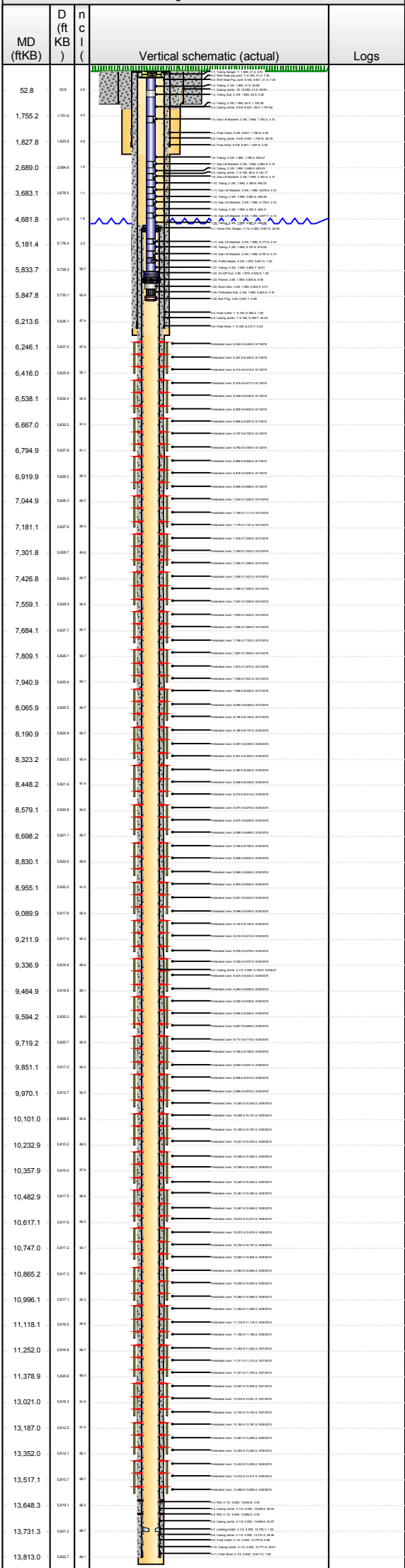
API Number 051233860100			WPC ID 1CO0761152			Well Permit Number			Field Name DJ Horizontal Niobrara			County Weld		State CO											
Well Configuration Type Lateral/Horizontal			Orig KB Elv (ft) 4,975.00			Ground Elevation (ft) 4,954.00			Casing Flange Elevation (ft)			Tubing Head Elevation (ft)			Total Depth (ftKB) 13,825.0										
Original Spud Date 3/23/2015			Completion Date 6/1/2015			Asset Group Redtail			Responsible Engineer Charles Ohlson			N/S Dist (ft) 2,165.0		N/S Ref FNL		E/W Dist (ft) 395.0		E/W Ref FEL							
Lot		Quarter 1 SE		Quarter 2 NE		Quarter 3		Quarter 4		Section 11		Section Suffix		Section Type		Township 10 N		Township N/S Dir		Range 58		Range E/W Dir W		Meridian	
Lateral/Horizontal - Original Hole, 9/10/2015 9:04:11 AM										Perforations															
<div><div><div>Vertical schematic (actual)</div><div><div></div><div></div><div></div><div></div><div></div><div></div><div></div><div></div><div></div><div></div><div></div><div></div><div></div><div></div><div></div><div></div><div></div><div></div><div></div><div></div><div></div><div></div><div></div><div></div><div></div><div></div><div></div><div></div><div></div><div></div><div></div><div></div><div></div><div></div><div></div><div></div><div></div><div></div><div></div><div></div><div></div><div></div><div></div><div></div><div></div><div></div><div></div><div></div><div></div><div></div><div></div><div></div><div></div><div></div><div></div><div></div><div></div><div></div><div></div><div></div><div></div><div></div><div></div><div></div><div></div><div></div><div></div><div></div><div></div><div></div><div></div><div></div><div></div><div></div><div></div><div></div><div></div><div></div><div></div><div></div><div></div><div></div><div></div><div></div><div></div><div></div><div></div><div></div><div></div><div></div><div></div><div></div><div></div><div></div><div></div><div></div><div></div><div></div><div></div><div></div><div></div><div></div><div></div><div></div><div></div><div></div><div></div><div></div><div></div><div></div><div></div><div></div><div></div><div></div><div></div><div></div><div></div><div></div><div></div><div></div><div></div><div></div><div></div><div></div><div></div><div></div><div></div><div></div><div></div><div></div><div></div><div></div><div></div><div></div><div></div><div></div><div></div><div></div><div></div><div></div><div></div><div></div><div></div><div></div><div></div><div></div><div></div><div></div><div></div><div></div><div></div><div></div><div></div><div></div><div></div><div></div><div></div><div></div><div></div><div></div><div></div><div></div><div></div><div></div><div></div><div></div><div></div><div></div><div></div><div></div><div></div><div></div><div></div><div></div><div></div><div></div><div></div><div></div><div></div><div></div><div></div><div></div><div></div><div></div><div></div><div></div><div></div><div></div><div></div><div></div><div></div><div></div><div></div><div></div><div></div><div></div><div></div><div></div><div></div><div></div><div></div><div></div><div></div><div></div><div></div><div></div><div></div><div></div><div></div><div></div><div></div><div></div><div></div><div></div><div></div><div></div><div></div><div></div><div></div><div></div><div></div><div></div><div></div><div></div><div></div><div></div><div></div><div></div><div></div><div></div><div></div><div></div><div></div><div></div><div></div><div></div><div></div><div></div><div></div><div></div><div></div><div></div><div></div><div></div><div></div><div></div><div></div><div></div><div></div><div></div><div></div><div></div><div></div><div></div><div></div><div></div><div></div><div></div><div></div><div></div><div></div><div></div><div></div><div></div><div></div><div></div><div></div><div></div><div></div><div></div><div></div><div></div><div></div><div></div><div></div><div></div><div></div><div></div><div></div><div></div><div></div><div></div><div></div><div></div><div></div><div></div><div></div><div></div><div></div><div></div><div></div><div></div><div></div><div></div><div></div><div></div><div></div><div></div><div></div><div></div><div></div><div></div><div></div><div></div><div></div><div></div><div></div><div></div><div></div><div></div><div></div><div></div><div></div><div></div><div></div><div></div><div></div><div></div><div></div><div></div><div></div><div></div><div></div><div></div><div></div><div></div><div></div><div></div><div></div><div></div><div></div><div></div><div></div><div></div><div></div><div></div><div></div><div></div><div></div><div></div><div></div><div></div><div></div><div></div><div></div><div></div><div></div><div></div><div></div><div></div><div></div><div></div><div></div><div></div><div></div><div></div><div></div><div></div><div></div><div></div><div></div><div></div><div></div><div></div><div></div><div></div><div></div><div></div><div></div><div></div><div></div><div></div><div></div><div></div><div></div><div></div><div></div><div></div><div></div><div></div><div></div><div></div><div></div><div></div><div></div><div></div><div></div><div></div><div></div><div></div><div></div><div></div><div></div><div></div><div></div><div></div><div></div><div></div><div></div><div></div><div></div><div></div><div></div><div></div><div></div><div></div><div></div><div></div><div></div><div></div><div></div><div></div><div></div><div></div><div></div><div></div><div></div><div></div><div></div><div></div><div></div><div></div><div></div><div></div><div></div><div></div><div></div><div></div><div></div><div></div><div></div><div></div><div></div><div></div><div></div><div></div><div></div><div></div><div></div><div></div><div></div><div></div><div></div><div></div><div></div><div></div><div></div><div></div><div></div><div></div><div></div><div></div><div></div><div></div><div></div><div></div><div></div><div></div><div></div><div></div><div></div><div></div><div></div><div></div><div></div><div></div><div></div><div></div><div></div><div></div><div></div><div></div><div></div><div></div><div></div><div></div><div></div><div></div><div></div><div></div><div></div><div></div><div></div><div></div><div></div><div></div><div></div><div></div><div></div><div></div><div></div><div></div><div></div><div></div><div></div><div></div><div></div><div></div><div></div><div></div><div></div><div></div><div></div><div></div><div></div><div></div><div></div><div></div><div></div><div></div><div></div><div></div><div></div><div></div><div></div><div></div><div></div><div></div><div></div><div></div><div></div><div></div><div></div><div></div><div></div><div></div><div></div><div></div><div></div><div></div><div></div><div></div><div></div><div></div><div></div><div></div><div></div><div></div><div></div><div></div><div></div><div></div><div></div><div></div><div></div><div></div><div></div><div></div><div></div><div></div><div></div><div></div><div></div><div></div><div></div><div></div><div></div><div></div><div></div><div></div><div></div><div></div><div></div><div></div><div></div><div></div><div></div><div></div><div></div><div></div><div></div><div></div><div></div><div></div><div></div><div></div><div></div><div></div><div></div><div></div><div></div><div></div><div></div><div></div><div></div><div></div><div></div><div></div><div></div><div></div><div></div><div></div><div></div><div></div><div></div><div></div><div></div><div></div><div></div><div></div><div></div><div></div><div></div><div></div><div></div><div></div><div></div><div></div><div></div><div></div><div></div><div></div><div></div><div></div><div></div><div></div><div></div><div></div><div></div><div></div><div></div><div></div><div></div><div></div><div></div><div></div><div></div><div></div><div></div><div></div><div></div><div></div><div></div><div></div><div></div><div></div><div></div><div></div><div></div><div></div><div></div><div></div><div></div><div></div><div></div><div></div><div></div><div></div><div></div><div></div><div></div><div></div><div></div><div></div><div></div><div></div><div></div><div></div><div></div><div></div><div></div><div></div><div></div><div></div><div></div><div></div><div></div><div></div><div></div><div></div><div></div><div></div><div></div><div></div><div></div><div></div><div></div><div></div><div></div><div></div><div></div><div></div><div></div><div></div><div></div><div></div><div></div><div></div><div></div><div></div><div></div><div></div><div></div><div></div><div></div><div></div><div></div><div></div><div></div><div></div><div></div><div></div><div></div><div></div><div></div><div></div><div></div><div></div><div></div><div></div><div></div><div></div><div></div><div></div><div></div><div></div><div></div><div></div><div></div><div></div><div></div><div></div><div></div><div></div><div></div><div></div><div></div><div></div><div></div><div></div><div></div><div></div><div></div><div></div><div></div><div></div><div></div><div></div><div></div><div></div><div></div><div></div><div></div><div></div><div></div><div></div><div></div><div></div><div></div><div></div><div></div><div></div><div></div><div></div><div></div><div></div><div></div><div></div><div></div><div></div><div></div><div></div><div></div><div></div><div></div><div></div><div></div><div></div><div></div><div></div><div></div><div></div><div></div><div></div><div></div><div></div><div></div><div></div><div></div><div></div><div></div><div></div><div></div><div></div><div></div><div></div><div></div><div></div><div></div><div></div><div></div><div></div><div></div><div></div><div></div><div></div><div></div><div></div><div></div><div></div><div></div><div></div><div></div><div></div><div></div><div></div><div></div><div></div><div></div><div></div><div></div><div></div><div></div><div></div><div></div><div></div><div></div><div></div><div></div><div></div><div></div><div></div><div></div><div></div><div></div><div></div><div></div><div></div><div></div><div></div><div></div><div></div><div></div><div></div><div></div><div></div><div></div><div></div><div></div><div></div><div></div><div></div><div></div><div></div><div></div><div></div><div></div><div></div><div></div><div></div><div></div><div></div><div></div><div></div><div></div><div></div><div></div><div></div><div></div><div></div><div></div><div></div><div></div><div></div><div></div><div></div><div></div><div></div><div></div><div></div><div></div><div></div><div></div><div></div><div></div><div></div><div></div><div></div><div></div><div></div><div></div><div></div><div></div><div></div><div></div><div></div><div></div><div></div><div></div><div></div><div></div><div></div><div></div><div></div><div></div><div></div><div></div><div></div><div></div><div></div><div></div><div></div><div></div><div></div><div></div><div></div><div></div><div></div><div></div><div></div><div></div><div></div><div></div><div></div><div></div><div></div><div></div><div></div><div></div><div></div><div></div><div></div><div></div><div></div><div></div><div></div><div></div><div></div><div></div><div></div><div></div><div></div><div></div><div></div><div></div><div></div><div></div><div></div><div></div><div></div><div></div><div></div><div></div><div></div><div></div><div></div><div></div><div></div><div></div><div></div><div></div><div></div><div></div><div></div><div></div><div></div><div></div><div></div><div></div><div></div><div></div><div></div><div></div><div></div><div></div><div></div><div></div><div></div><div></div><div></div><div></div><div></div><div></div><div></div><div></div><div></div><div></div><div></div><div></div><div></div><div></div><div></div><div></div><div></div><div></div><div></div><div></div><div></div><div></div><div></div><div></div><div></div><div></div><div></div><div></div><div></div><div></div><div></div><div></div><div></div><div></div><div></div><div></div><div></div><div></div><div></div><div></div><div></div><div></div><div></div><div></div><div></div><div></div><div></div><div></div><div></div><div></div><div></div><div></div><div></div><div></div><div></div><div></div><div></div><div></div><div></div><div></div><div></div><div></div><div></div><div></div><div></div><div></div><div></div><div></div><div></div><div></div><div></div><div></div><div></div><div></div><div></div><div></div><div></div><div></div><div></div><div></div><div></div><div></div><div></div><div></div><div></div><div></div><div></div><div></div><div></div><div></div><div></div><div></div><div></div><div></div><div></div><div></div><div></div><div></div><div></div><div></</div></div></div></div>																									



Lease Review
Well Name: RAZOR 11H-1415A

API Number 051233860100		WPC ID 1CO0761152		Well Permit Number		Field Name DJ Horizontal Niobrara			County Weld		State CO
Well Configuration Type Lateral/Horizontal				Orig KB Elv (ft) 4,975.00	Ground Elevation (ft) 4,954.00	Casing Flange Elevation (ft)		Tubing Head Elevation (ft)		Total Depth (ftKB) 13,825.0	
Original Spud Date 3/23/2015		Completion Date 6/1/2015		Asset Group Redtail		Responsible Engineer Charles Ohlson		N/S Dist (ft) 2,165.0	N/S Ref FNL	E/W Dist (ft) 395.0	E/W Ref FEL
Lot	Quarter 1 SE	Quarter 2 NE	Quarter 3	Quarter 4	Section 11	Section Suffix	Section Type	Township 10 N	Township N/S Dir	Range 58 W	Meridian

Lateral/Horizontal - Original Hole, 9/10/2015 9:04:11 AM





Lease Review
Well Name: RAZOR 11H-1415A

API Number 051233860100	WPC ID 1CO0761152	Well Permit Number	Field Name DJ Horizontal Niobrara	County Weld	State CO
Well Configuration Type Lateral/Horizontal	Orig KB Elv (ft) 4,975.00	Ground Elevation (ft) 4,954.00	Casing Flange Elevation (ft)	Tubing Head Elevation (ft)	Total Depth (ftKB) 13,825.0
Original Spud Date 3/23/2015	Completion Date 6/1/2015	Asset Group Redtail	Responsible Engineer Charles Ohlson	N/S Dist (ft) 2,165.0 N/S Ref FNL	E/W Dist (ft) 395.0 E/W Ref FEL
Lot	Quarter 1 SE	Quarter 2 NE	Quarter 3	Quarter 4	Section 11
			Section Suffix	Section Type	Township 10 N
					Township N/S Dir Range 58 W
					Meridian

Lateral/Horizontal - Original Hole, 9/10/2015 9:04:11 AM				Stim/Treat Stages						
MD (ftKB)	D (ft KB)	n c l (Logs	Stg #	Start Date	Top Depth (ftKB)	Bottom Depth (ftKB)	Vol Clean Pump (bbl)	Vol Slurry (bbl)
52.8	52.8	1.0			14	5/29/2015	9,335.0	9,465.0	6290.00	
					Additive Proppant	Ottawa 30/50	Amount 146,757.0	Units lb	Sand Size 30/50	
1,755.2	1,755.2	4.0			Additive Proppant	Ottawa 40/70	Amount 3,312.0	Units lb	Sand Size 40/70	
1,827.8	1,827.8	4.0			15	5/30/2015	9,144.0	9,278.0	6222.00	
2,689.0	2,689.0	1.0			Additive Proppant	Ottawa 30/50	Amount 142,404.0	Units lb	Sand Size 30/50	
3,683.1	3,678.5	1.1			Additive Proppant	Ottawa 40/70	Amount 3,614.0	Units lb	Sand Size 40/70	
4,681.8	4,677.0	1.0			16	5/30/2015	8,953.0	9,090.0	5888.00	
5,181.4	5,176.4	1.0			Additive Proppant	Ottawa 30/50	Amount 117,268.0	Units lb	Sand Size 30/50	
5,833.7	5,788.2	0.0			Additive Proppant	Ottawa 40/70	Amount 3,113.0	Units lb	Sand Size 40/70	
5,847.8	5,776.1	0.0			17	5/30/2015	8,760.0	8,896.0	6189.00	
6,213.6	6,208.1	0.4			Additive Proppant	Ottawa 30/50	Amount 136,372.0	Units lb	Sand Size 30/50	
6,246.1	6,237.5	0.0			Additive Proppant	Ottawa 40/70	Amount 2,689.0	Units lb	Sand Size 40/70	
6,416.0	6,410.5	0.0			18	5/30/2015	8,577.0	8,698.0	5979.00	
6,538.1	6,533.6	0.0			Additive Proppant	Ottawa 30/50	Amount 119,579.0	Units lb	Sand Size 30/50	
6,667.0	6,662.5	0.0			Additive Proppant	Ottawa 40/70	Amount 2,571.0	Units lb	Sand Size 40/70	
6,794.9	6,790.4	0.1			19	5/30/2015	8,380.0	8,514.0	6280.00	
6,919.9	6,915.4	0.0			Additive Proppant	Ottawa 30/50	Amount 153,047.0	Units lb	Sand Size 30/50	
7,044.9	7,040.4	0.0			Additive Proppant	Ottawa 40/70	Amount 3,816.0	Units lb	Sand Size 40/70	
7,181.1	7,176.6	0.0			20	5/30/2015	8,189.0	8,323.0	6245.00	
7,301.8	7,297.3	0.0			Additive Proppant	Ottawa 30/50	Amount 157,186.0	Units lb	Sand Size 30/50	
7,426.8	7,422.3	0.0			Additive Proppant	Ottawa 40/70	Amount 4,274.0	Units lb	Sand Size 40/70	
7,559.1	7,554.6	0.0			21	5/31/2015	7,998.0	8,128.0	6051.00	
7,684.1	7,679.6	0.0			Additive Proppant	Ottawa 30/50	Amount 132,665.0	Units lb	Sand Size 30/50	
7,809.1	7,804.6	0.0			Additive Proppant	Ottawa 40/70	Amount 3,878.0	Units lb	Sand Size 40/70	
7,940.9	7,936.4	0.0			22	5/31/2015	7,807.0	7,941.0	6093.00	
8,065.9	8,061.4	0.0			Additive Proppant	Ottawa 30/50	Amount 144,051.0	Units lb	Sand Size 30/50	
8,190.9	8,186.4	0.0			Additive Proppant	Ottawa 40/70	Amount 1,674.0	Units lb	Sand Size 40/70	
8,323.2	8,318.7	0.0			23	5/31/2015	7,620.0	7,750.0	6111.00	
8,448.2	8,443.7	0.0			Additive Proppant	Ottawa 30/50	Amount 132,296.0	Units lb	Sand Size 30/50	
8,579.1	8,574.6	0.0			Additive Proppant	Ottawa 40/70	Amount 2,632.0	Units lb	Sand Size 40/70	
8,698.2	8,693.7	0.0			24	5/31/2015	7,425.0	7,559.0	6101.00	
8,830.1	8,825.6	0.0			Additive Proppant	Ottawa 30/50	Amount 144,274.0	Units lb	Sand Size 30/50	
8,955.1	8,950.6	0.0			Additive Proppant	Ottawa 40/70	Amount 3,241.0	Units lb	Sand Size 40/70	
9,089.9	9,085.4	0.0			25	5/31/2015	7,234.0	7,366.0	5909.00	
9,211.9	9,207.4	0.0			Additive Proppant	Ottawa 30/50	Amount 130,341.0	Units lb	Sand Size 30/50	
9,336.9	9,332.4	0.0			Additive Proppant	Ottawa 40/70	Amount 3,472.0	Units lb	Sand Size 40/70	
9,464.9	9,460.4	0.0			26	5/31/2015	7,043.0	7,181.0	6075.00	
9,594.2	9,589.7	0.0			Additive Proppant	Ottawa 30/50	Amount 145,726.0	Units lb	Sand Size 30/50	
9,719.2	9,714.7	0.0			Additive Proppant	Ottawa 40/70	Amount 3,371.0	Units lb	Sand Size 40/70	
9,851.1	9,846.6	0.0			27	6/1/2015	6,860.0	6,986.0	6053.00	
9,970.1	9,965.6	0.0			Additive Proppant	Ottawa 30/50	Amount 142,045.0	Units lb	Sand Size 30/50	
10,101.0	10,096.5	0.0			Additive Proppant	Ottawa 40/70	Amount 3,587.0	Units lb	Sand Size 40/70	
10,232.9	10,228.4	0.0			28	6/1/2015	6,665.0	6,795.0	6037.00	
10,357.9	10,353.4	0.0			Additive Proppant	Ottawa 30/50	Amount 129,598.0	Units lb	Sand Size 30/50	
10,482.9	10,478.4	0.0			Additive Proppant	Ottawa 40/70	Amount 2,769.0	Units lb	Sand Size 40/70	
10,617.1	10,612.6	0.0			29	6/1/2015	6,475.0	6,604.0	5955.00	
10,747.0	10,742.5	0.0			Additive Proppant	Ottawa 30/50	Amount 143,667.0	Units lb	Sand Size 30/50	
10,865.2	10,860.7	0.0								
10,996.1	10,991.6	0.0								
11,118.1	11,113.6	0.0								
11,252.0	11,247.5	0.0								
11,378.9	11,374.4	0.0								
13,021.0	13,016.5	0.0								
13,187.0	13,182.5	0.0								
13,352.0	13,347.5	0.0								
13,517.1	13,512.6	0.0								
13,648.3	13,643.8	0.0								
13,731.3	13,726.8	0.0								
13,813.0	13,808.5	0.0								



Lease Review
Well Name: RAZOR 11H-1415A

API Number 051233860100				WPC ID 1CO0761152				Well Permit Number				Field Name DJ Horizontal Niobrara				County Weld		State CO									
Well Configuration Type Lateral/Horizontal				Orig KB Elv (ft) 4,975.00				Ground Elevation (ft) 4,954.00				Casing Flange Elevation (ft)				Tubing Head Elevation (ft)				Total Depth (ftKB) 13,825.0							
Original Spud Date 3/23/2015				Completion Date 6/1/2015				Asset Group Redtail				Responsible Engineer Charles Ohlson				N/S Dist (ft) 2,165.0				N/S Ref FNL		E/W Dist (ft) 395.0		E/W Ref FEL			
Lot		Quarter 1 SE		Quarter 2 NE		Quarter 3		Quarter 4		Section 11		Section Suffix		Section Type		Township 10 N		Township N/S Dir		Range 58		Range E/W Dir W		Meridian			
Lateral/Horizontal - Original Hole, 9/10/2015 9:04:12 AM												Additive Proppant				Type Ottawa 40/70				Amount 2,624.0		Units lb		Sand Size 40/70			
MD (ftKB)		D (ftKB)		n (ft)		c (ft)								Stg # 30		Start Date 6/1/2015				Top Depth (ftKB) 6,244.0		Bottom Depth (ftKB) 6,416.0		Vol Clean Pump (bbl) 6148.00		Vol Slurry (bbl)	
														Additive Proppant		Type Ottawa 30/50				Amount 166,044.0		Units lb		Sand Size 30/50			
														Additive Proppant		Type Ottawa 40/70				Amount 4,800.0		Units lb		Sand Size 40/70			
												Tubing - Production set at 5,848.3ftKB on 6/24/2015 06:00															
														Set Depth (ftKB) 5,848.3		Comment								Run Date 6/24/2015		Pull Date	
														Item Des		OD (in)		ID (in)		Len (ft)		Top (ftKB)		Btm (ftKB)			
														Tubing Hanger		7		1.995		0.91		21.0		21.9			
														Tubing		2 3/8		1.995		30.98		21.9		52.9			
														Tubing Sub		2 3/8		1.995		2.02		52.9		54.9			
														Tubing		2 3/8		1.995		1,700.28		54.9		1,755.2			
														Gas Lift Mandrel		2 3/8		1.995		4.10		1,755.2		1,759.3			
														Tubing		2 3/8		1.995		925.57		1,759.3		2,684.9			
														Gas Lift Mandrel		2 3/8		1.995		4.10		2,684.9		2,689.0			
														Tubing		2 3/8		1.995		493.53		2,689.0		3,182.5			
														Gas Lift Mandrel		2 3/8		1.995		4.10		3,182.5		3,186.6			
														Tubing		2 3/8		1.995		492.23		3,186.6		3,678.9			
														Gas Lift Mandrel		2 3/8		1.995		4.10		3,678.9		3,683.0			
														Tubing		2 3/8		1.995		495.26		3,683.0		4,178.2			
														Gas Lift Mandrel		2 3/8		1.995		4.10		4,178.2		4,182.3			
														Tubing		2 3/8		1.995		495.41		4,182.3		4,677.7			
														Gas Lift Mandrel		2 3/8		1.995		4.10		4,677.7		4,681.8			
														Tubing		2 3/8		1.995		495.66		4,681.8		5,177.5			
														Gas Lift Mandrel		2 3/8		1.995		4.10		5,177.5		5,181.6			
														Tubing		2 3/8		1.995		615.84		5,181.6		5,797.4			
														Gas Lift Mandrel		2 3/8		1.995		4.10		5,797.4		5,801.5			
														Profile Nipple		2 3/8		1.870		1.20		5,801.5		5,802.7			
														Tubing		2 3/8		1.995		30.91		5,802.7		5,833.6			
														On-Off Tool		3.65		1.870		1.35		5,833.6		5,835.0			
														Packer		3.65		1.950		8.06		5,835.0		5,843.0			
														Burst Disc		3.06		1.500		0.51		5,843.0		5,843.6			
														Perforated Sub		2 3/8		1.995		4.10		5,843.6		5,847.7			
														Bull Plug		3.06				0.68		5,847.7		5,848.3			
												Rod Strings															
												Rod Description						Run Date				Pull Date					
												Item Des						OD (in)		Len (ft)		Top (ftKB)		Btm (ftKB)			
												Other Strings															
														Set Depth (ftKB)		Comment								Run Date		Pull Date	
														Item Des		OD (in)		Len (ft)		Top (ftKB)		Btm (ftKB)					
												Other In Hole															
														Des		OD (in)		Run Date		Pull Date		Top (ftKB)		Btm (ftKB)			
														Frac Plug		4		6/1/2015		6/21/2015		6,441.0		6,443.0			
														Frac Plug		4		6/1/2015		6/21/2015		6,632.0		6,634.0			
														Frac Plug		4		6/1/2015		6/21/2015		6,823.0		6,825.0			
														Frac Plug		4		6/1/2015		6/21/2015		7,000.0		7,002.0			
														Frac Plug		4		5/31/2015		6/21/2015		7,200.0		7,202.0			
														Frac Plug		4		5/31/2015		6/21/2015		7,396.0		7,398.0			
														Frac Plug		4		5/31/2015		6/21/2015		7,587.0		7,589.0			
														Frac Plug		4		5/31/2015		6/21/2015		7,784.0		7,786.0			
														Frac Plug		4		5/31/2015		6/21/2015		7,957.0		7,959.0			
														Frac Plug		4		5/30/2015		6/21/2015		8,351.0		8,353.0			
														Frac Plug		4		5/30/2015		6/21/2015		8,542.0		8,544.0			
														Frac Plug		4		5/30/2015		6/21/2015		8,716.0		8,718.0			
														Frac Plug		4		5/30/2015		6/21/2015		8,914.0		8,916.0			
														Frac Plug		4		5/30/2015		6/21/2015		9,106.0		9,108.0			
														Frac Plug		4		5/30/2015		6/21/2015		9,296.0		9,298.0			
														Frac Plug		4		5/29/2015		6/21/2015		9,497.0		9,499.0			
														Frac Plug		4		5/29/2015		6/21/2015		9,688.0		9,690.0			
														Frac Plug		4		5/29/2015		6/21/2015		9,879.0		9,881.0			
														Frac Plug		4		5/29/2015		6/21/2015		10,070.0		10,072.0			
														Frac Plug		4		5/29/2015		6/21/2015		10,261.0		10,263.0			
														Frac Plug		4		5/29/2015		6/21/2015		10,440.0		10,442.0			
														Frac Plug		4		5/28/2015		6/21/2015		10,635.0		10,637.0			
														Frac Plug		4		5/28/2015		6/21/2015		10,834.0		10,836.0			
														Frac Plug		4		5/28/2015		6/21/2015		11,025.0		11,027.0			
														Frac Plug		4		5/28/2015		6/21/2015		11,216.0		11,218.0			
														Frac Plug		4		5/27/2015		6/21/2015		11,407.0		11,409.0			



Lease Review

Well Name: RAZOR 11H-1415A

API Number	WPC ID	Well Permit Number	Field Name	County	State
051233860100	1CO0761152		DJ Horizontal Niobrara	Weld	CO
Well Configuration Type	Orig KB Elv (ft)	Ground Elevation (ft)	Casing Flange Elevation (ft)	Tubing Head Elevation (ft)	Total Depth (ftKB)
Lateral/Horizontal	4,975.00	4,954.00			13,825.0
Original Spud Date	Completion Date	Asset Group	Responsible Engineer	N/S Dist (ft)	N/S Ref
3/23/2015	6/1/2015	Redtail	Charles Ohlson	2,165.0	FNL
				E/W Dist (ft)	E/W Ref
				395.0	FEL
Lot	Quarter 1	Quarter 2	Quarter 3	Quarter 4	Section
	SE	NE			11
					Section Suffix
					Section Type
					Township
					10
					Township N/S Dir
					N
					Range
					58
					Range E/W Dir
					W
					Meridian

Lateral/Horizontal - Original Hole, 9/10/2015 9:04:12 AM					Other In Hole						
MD (ftKB)	D (ft KB)	n c l (Vertical schematic (actual)	Logs	Des		OD (in)	Run Date	Pull Date	Top (ftKB)	Btm (ftKB)
					Frac Plug		4	5/27/2015	6/21/2015	13,143.0	13,145.0
					Frac Plug		4	5/26/2015	6/21/2015	13,391.0	13,393.0
					Frac Plug		4	5/26/2015	6/21/2015	13,620.0	13,622.0
Bottom Hole Cores											
Date		Core #		Top (ftKB)		Btm (ftKB)		Recov (ft)			