



Kerr-McGee Oil & Gas Onshore LP

A subsidiary of Anadarko Petroleum Corporation

1099 18th Street
Denver, CO 80202
720-929-6000

September 2, 2015

Matt Lepore
Director, Colorado Oil and Gas Conservation Commission
Department of Natural Resources
The Chancery Building
1120 Lincoln Street, Suite 801
Denver, CO 80203

Re: **30 Day Certification Letter - 318A.e**
CC OPEN A 15N-25HZ (Doc No. 400893572)
Township 2 North, Range 65 West
Section 25: NENW
Unit Acreage: 400 acres
Unit Spacing: 02N65W SEC 25 E2W2, W2E2
02N65W SEC 36 NENW, NWNE
Weld County, Colorado

Dear Director Lepore:

Kerr-McGee Oil and Gas Onshore LP ("KMG") hereby certifies that a thirty (30) day notice has been given by certified mail to all mineral owners in the proposed wellbore spacing unit. We have not received any objections to such well location, proposed spacing unit, or additional producing formation. KMG hereby respectfully requests approval of this boundary well.

If you have any questions or issues regarding this permit, please contact our office.

Sincerely,

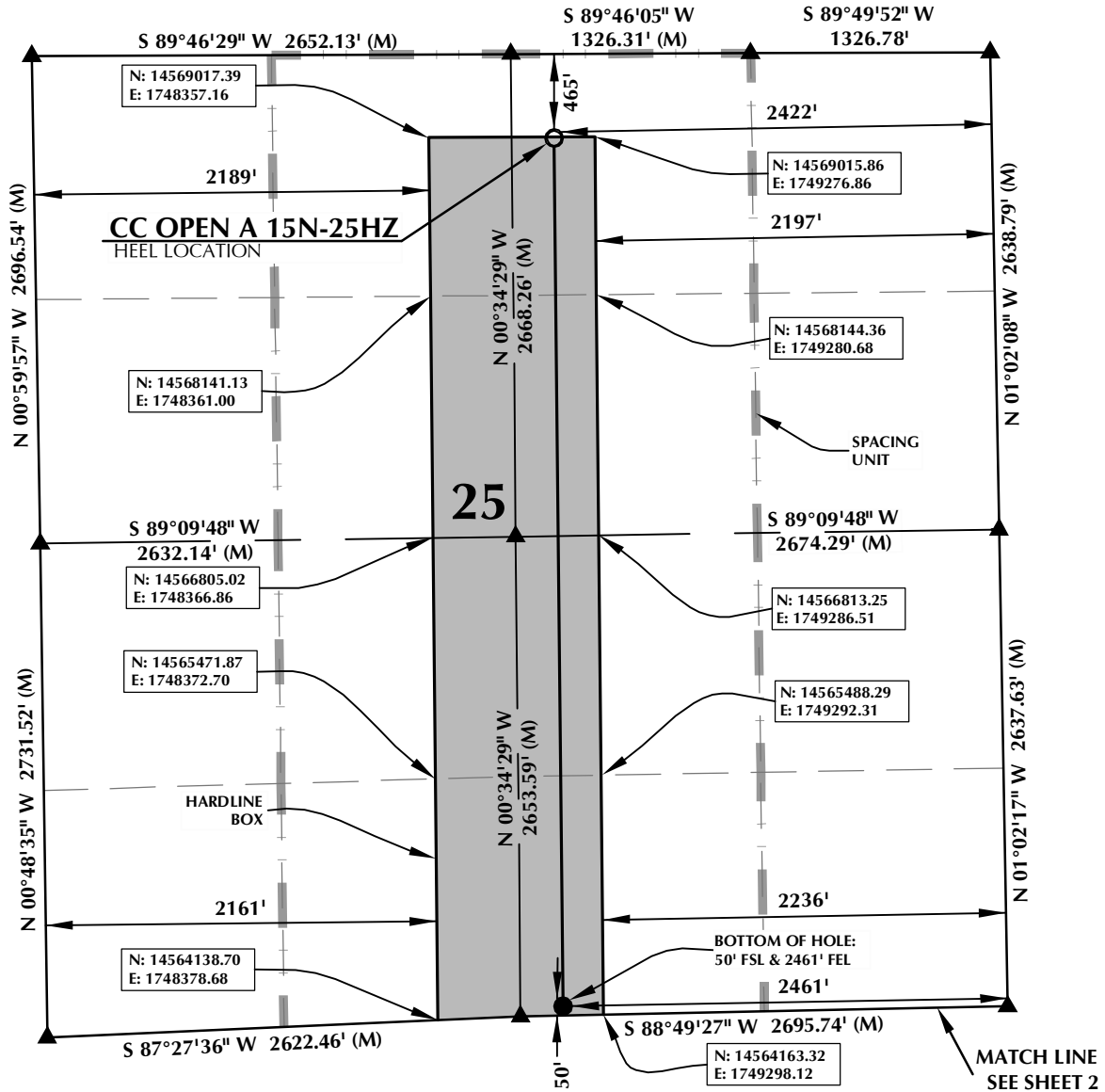
Kerr-McGee Oil and Gas Onshore LP

A handwritten signature in blue ink that reads 'RPowers'.

Ronett Powers
Regulatory Analyst II

Enclosure

SPACING UNIT: CC OPEN A 15N-25HZ T2N, R65W



HEEL LOCATION
N: 14,569,011.23'
E: 1,749,051.53'

LATITUDE= 40.115450°
LONGITUDE= -104.611434°

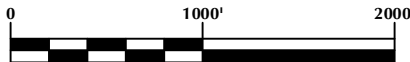
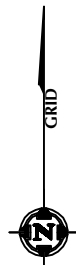
LATITUDE= 40°06'55.620"
LONGITUDE= -104°36'41.163"

AVAILABLE FOOTAGE
5739'

BOTTOM HOLE LOCATION
N: 14,564,209.95'
E: 1,749,072.31'

LATITUDE= 40.102265°
LONGITUDE= -104.611435°

LATITUDE= 40°06'08.154"
LONGITUDE= -104°36'41.166"



SCALE: 1" = 1000'

NOTES:

- ▲ INDICATES FOUND SECTION CORNER
- INDICATES CALCULATED CORNER
- BASIS OF BEARING DERIVED FROM COLORADO COORDINATE SYSTEM 1983 NORTH ZONE UNLESS OTHERWISE NOTED.
- DRAWING NORTHING / EASTING COORDINATES ARE BASED ON COLORADO COORDINATE SYSTEM 1983 NORTH ZONE UNLESS OTHERWISE NOTED.
- COMBINED SCALE FACTOR: .99972880
- N / E COORDINATES ARE BASED ON UTM COORDINATE SYSTEM NAD83, ZONE 13
- THIS EXHIBIT DOES NOT REPRESENT A LAND SURVEY PLAT OR IMPROVEMENT SURVEY PLAT AS DEFINED BY C.R.S. 38-51-102 AND CANNOT BE RELIED UPON TO DETERMINE OWNERSHIP.

WELL PAD - CC OPEN A 14C-36HZ

CC OPEN A 15N-25HZ
SPACING UNIT EXHIBIT
465' FNL & 2422' FEL NWNE (HEEL)
50' FSL & 2461' FEL SWSE (BOTTOM)
LOCATED IN SECTION 25
T2N, R65W, 6TH P.M.
WELD COUNTY, COLORADO

**Kerr-McGee Oil &
Gas Onshore L.P.**
1099 18th Street
Denver, Colorado 80202



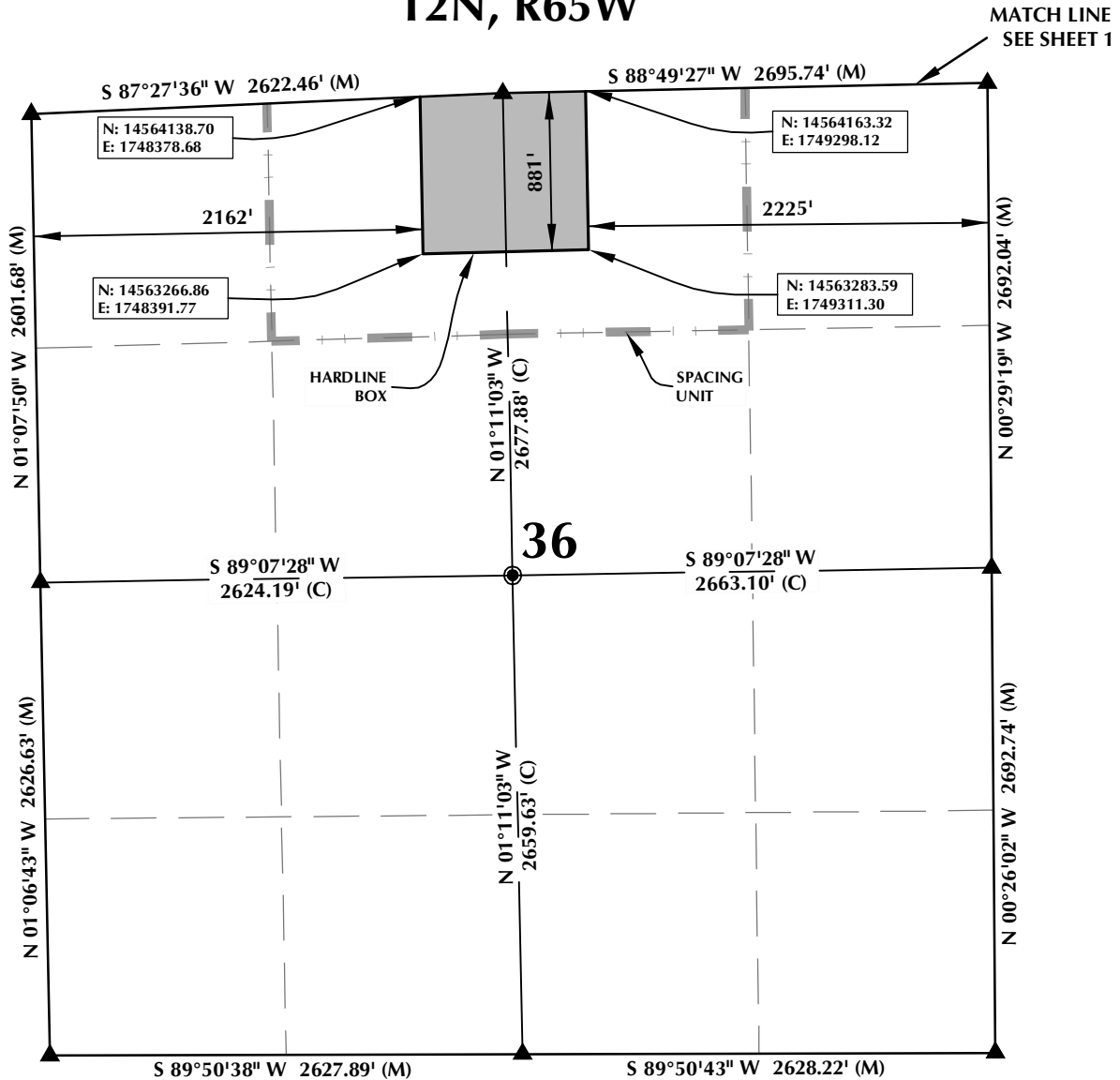
CONSULTING, LLC

SHERIDAN OFFICE
1095 Saberton Avenue
Sheridan, Wyoming 82801
Phone 307-674-0609

LOVELAND OFFICE
1635 Foxtrail Drive, Suite 204
Loveland, Colorado 80538
Phone 970-776-4331

DRAFTED BY:	LMO	CHECKED BY:	BJR	SHEET NO:
DATE DRAFTED:	1/30/15	DATE SURVEYED:	1/24/15	1
REVISED:		FILE NAME:	14-73	1 OF 2

SPACING UNIT: CC OPEN A 15N-25HZ T2N, R65W



HEEL LOCATION
 N: 14,569,011.23'
 E: 1,749,051.53'

LATITUDE= 40.115450°
 LONGITUDE= -104.611434°

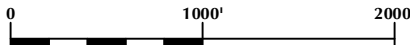
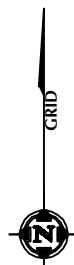
LATITUDE= 40°06'55.620"
 LONGITUDE= -104°36'41.163"

AVAILABLE FOOTAGE
 5739'

BOTTOM HOLE LOCATION
 N: 14,564,209.95'
 E: 1,749,072.31'

LATITUDE= 40.102265°
 LONGITUDE= -104.611435°

LATITUDE= 40°06'08.154"
 LONGITUDE= -104°36'41.166"



SCALE: 1" = 1000'

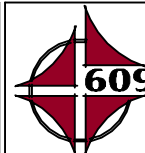
NOTES:

1. ▲ INDICATES FOUND SECTION CORNER
2. ● INDICATES CALCULATED CORNER
3. BASIS OF BEARING DERIVED FROM COLORADO COORDINATE SYSTEM 1983 NORTH ZONE UNLESS OTHERWISE NOTED.
4. DRAWING NORTHING / EASTING COORDINATES ARE BASED ON COLORADO COORDINATE SYSTEM 1983 NORTH ZONE UNLESS OTHERWISE NOTED.
5. COMBINED SCALE FACTOR: .99972880
6. N / E COORDINATES ARE BASED ON UTM COORDINATE SYSTEM NAD83, ZONE 13
7. THIS EXHIBIT DOES NOT REPRESENT A LAND SURVEY PLAT OR IMPROVEMENT SURVEY PLAT AS DEFINED BY C.R.S. 38-51-102 AND CANNOT BE RELIED UPON TO DETERMINE OWNERSHIP.

WELL PAD - CC OPEN A 14C-36HZ

CC OPEN A 15N-25HZ
 SPACING UNIT EXHIBIT
 465' FNL & 2422' FEL NWNE (HEEL)
 50' FSL & 2461' FEL SWSE (BOTTOM)
 LOCATED IN SECTION 25
 T2N, R65W, 6TH P.M.
 WELD COUNTY, COLORADO

**Kerr-McGee Oil &
 Gas Onshore L.P.**
 1099 18th Street
 Denver, Colorado 80202



CONSULTING, LLC

SHERIDAN OFFICE
 1095 Saberton Avenue
 Sheridan, Wyoming 82801
 Phone 307-674-0609

LOVELAND OFFICE
 1635 Foxtrail Drive, Suite 204
 Loveland, Colorado 80538
 Phone 970-776-4331

DRAFTED BY:	LMO	CHECKED BY:	BJR	SHEET NO:
DATE DRAFTED:	1/30/15	DATE SURVEYED:	1/24/15	2
REVISED:		FILE NAME:	14-73	2 OF 2